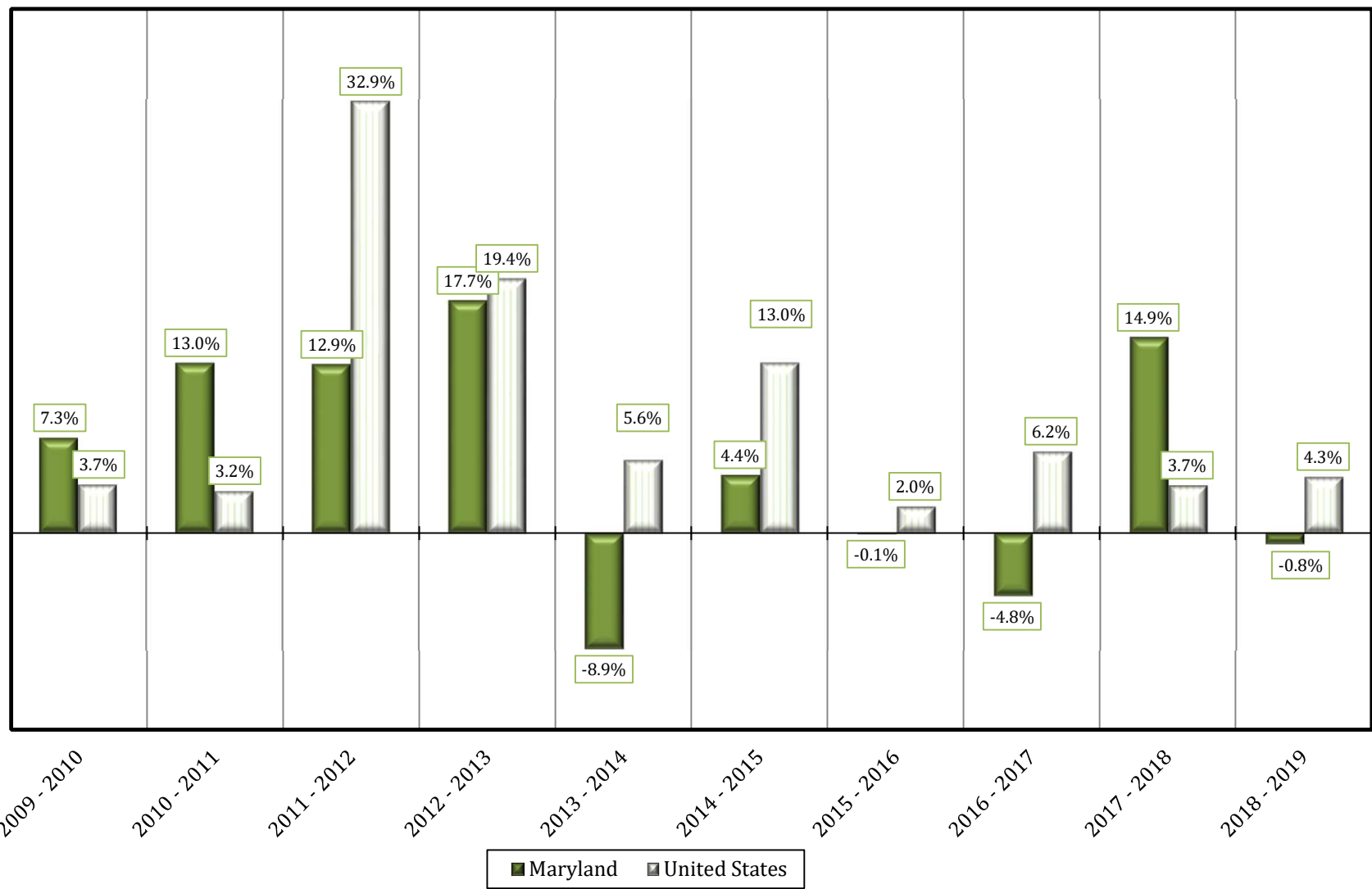


**Chart 1.A1 UNITED STATES AND MARYLAND
New Housing Units Authorized for Construction
Annual Percent Change: 2009 - 2019**



SOURCE: U. S. Bureau of the Census. Economic Indicators Division. Residential Construction Branch. 2020.
Prepared by MD Department of Planning. Planning Services Division. 2020.