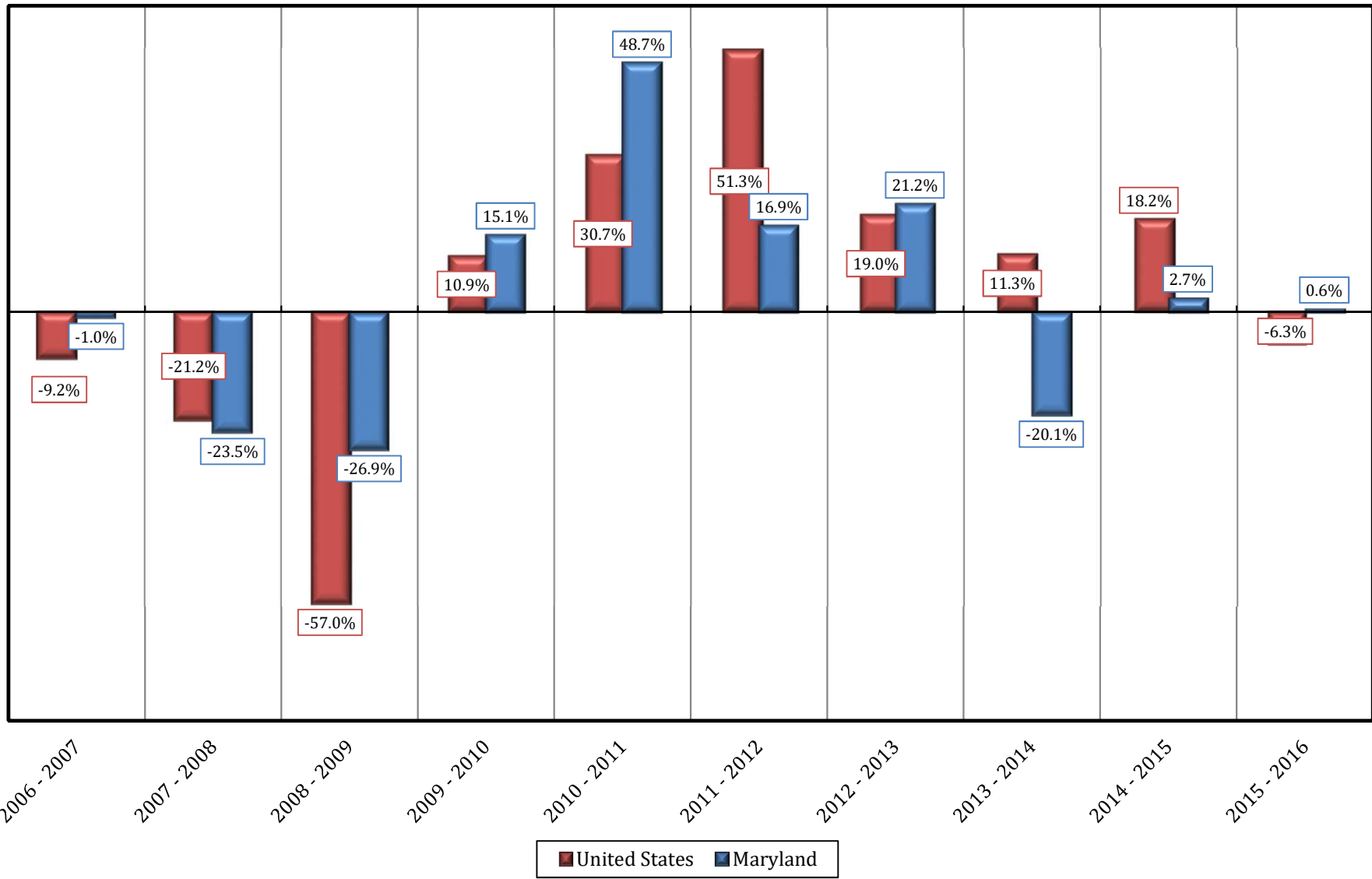


**Chart 1C.1 UNITED STATES AND MARYLAND
New Multi Family Housing Units Authorized for Construction
Percent Change: 2006 - 2016**



SOURCE: U. S. Bureau of the Census. Economic Indicators division. Residential Construction Branch. 2017.
Prepared by MD Department of Planning. Planning Services Division. 2017.