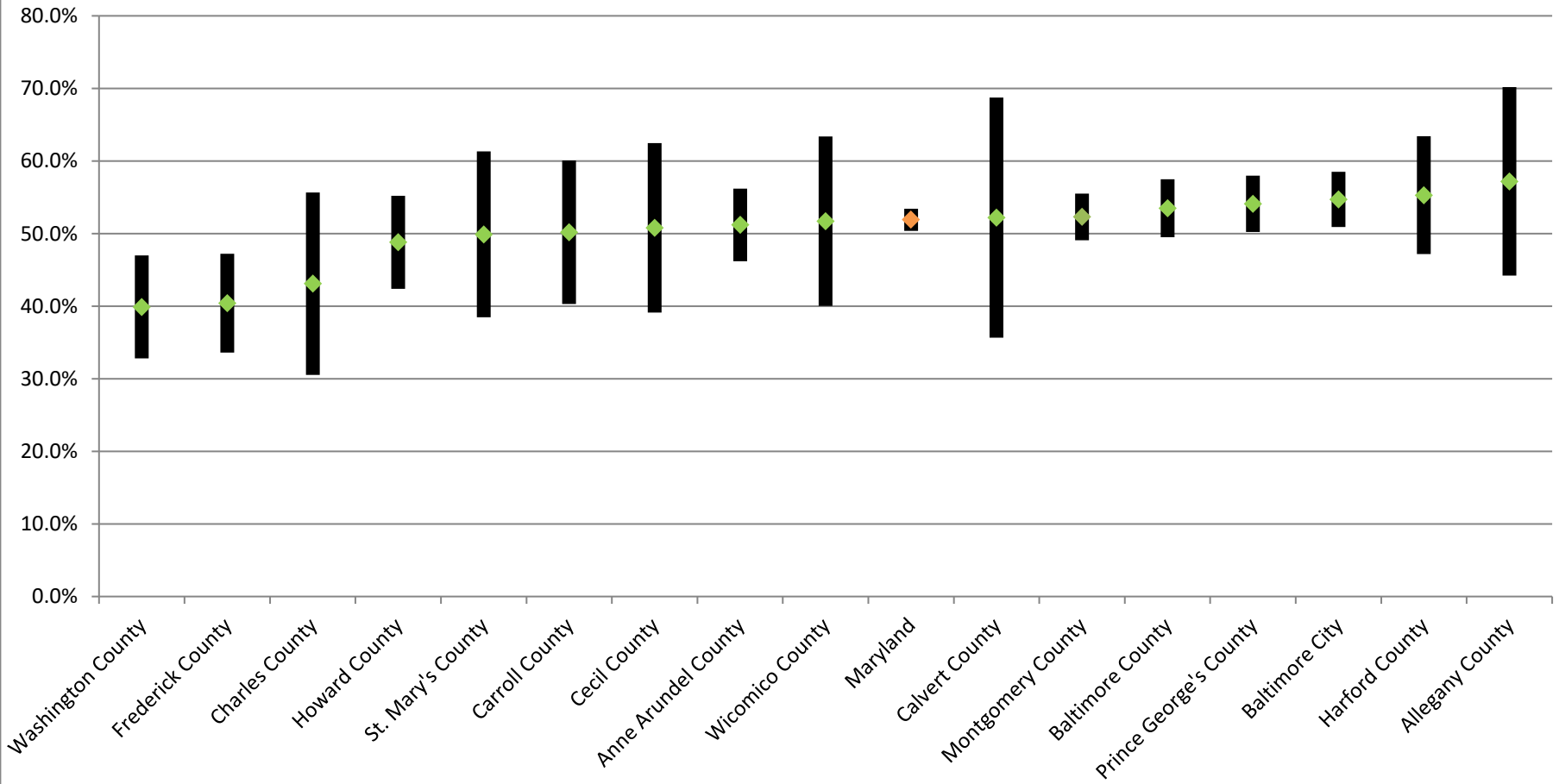


Percentage of Renters-Occupied Units Spending 30 Percent or More of Household Income on Selected Rent and Utilities in Maryland and its Jurisdictions, 2022 (with Margin of Error)



* Apparent differences may not be statistically significant at the 90 percent confidence interval.

Prepared by the Maryland Department of Planning, from the 2022 ACS for the 16 counties covered (population of 65,000 or more), September 2023