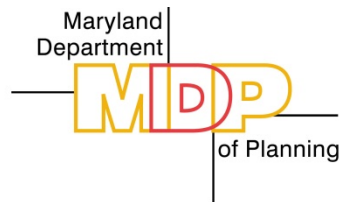
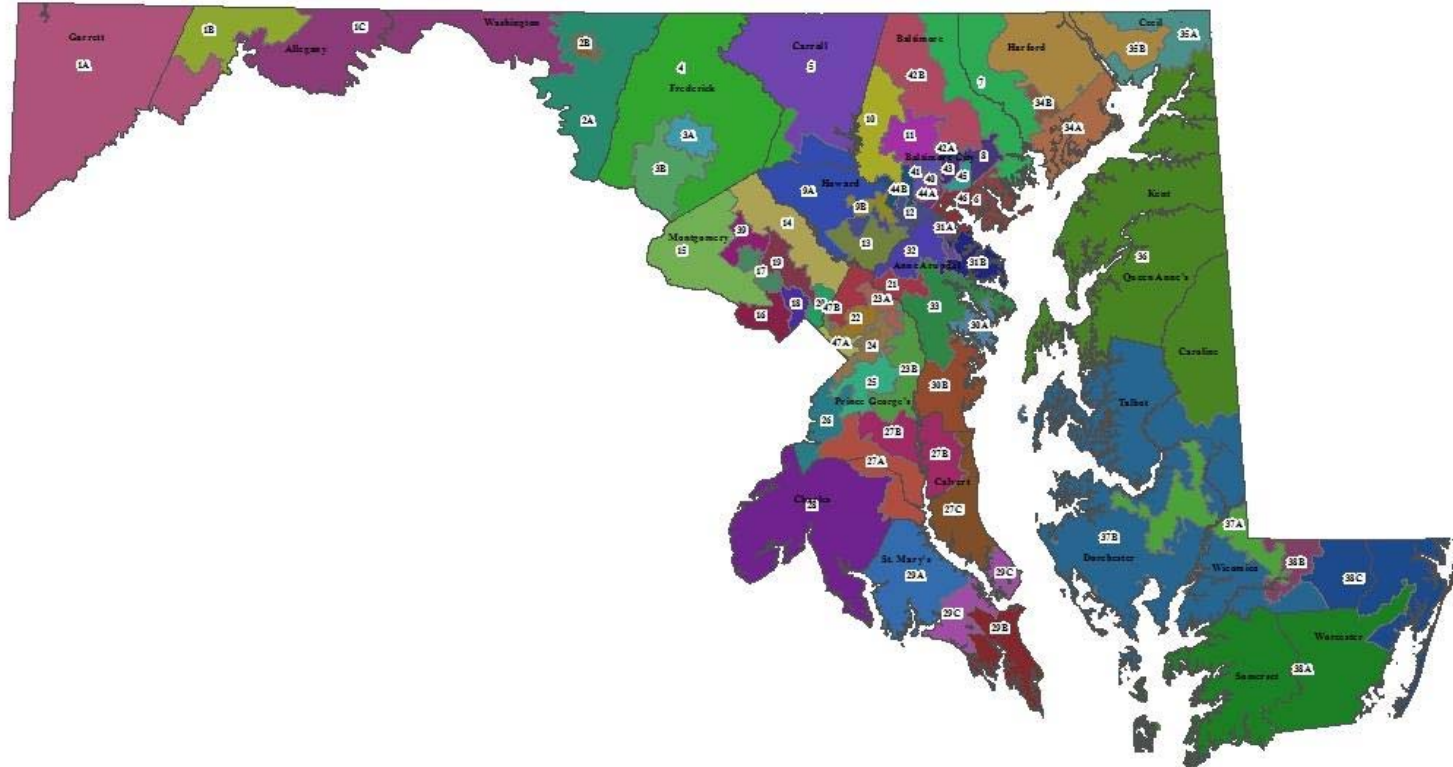


Demographic, Socioeconomic, Housing and Journey to Work Data for Maryland's House of Delegates Legislative Districts

American Community Survey 2008 – 2012 Five-Year Estimates



Martin O'Malley, *Governor*

Anthony Brown, *Lt. Governor*

Richard Eberhart Hall, *Secretary*

Amanda Stakem Conn, *Deputy Secretary*

Sustainable — Attainable

Description of the Data

What is the American Community Survey (ACS)? What are Five-Year Estimates?

The American Community Survey (ACS) is a nationwide survey designed to collect demographic, social, economic, and housing data every year. The U.S. Census Bureau releases data from the ACS in the form of both single-year and multiyear estimates. Unlike previous Census Bureau data products, the ACS is not concerned with creating population counts, but with collecting data on population characteristics. In the past, population characteristics were collected every ten years through the “long form” of the decennial Census, which was sent to a sample of the total population (approximately one in six households in 2000). The ACS replaces this form with a program that initially sampled 250,000 unique housing unit addresses per month, or 3 million per year. The sampling rate has since been increased with the 2012 ACS sampling 3.54 million unique address. But even after five years of accumulated sampling, the ACS will still have a smaller sample size than the decennial Census, which makes it important to pay attention to margins of error associated with these estimates (see “What is a Margin of Error” below).

This rolling sample allows population characteristics for large areas (those over 65,000 in population) to be reported yearly, instead of once every ten years under the previous “long form” system. Characteristics for areas containing between 20,000 and 65,000 persons are reported as three-year period estimates, as not enough households are sampled in one year to give reliable estimates. Characteristics for areas containing less than 20,000 persons, again due to their small size, are reported as five-year period estimates. These differences from the decennial Census mean that ACS data is more timely, but cannot be used to pinpoint a particular point in time (unlike the decennial Census, which is for April 1st of the census year). For more information on the ACS, how the data is collected, and how it should be used, please refer to *A Compass for Understanding and Using American Community Survey Data: What General Data Users Need to Know* (October 2008), available online from the U.S. Census Bureau at: http://www.census.gov/acs/www/guidance_for_data_users/handbooks/

What is a Margin of Error (MoE)?

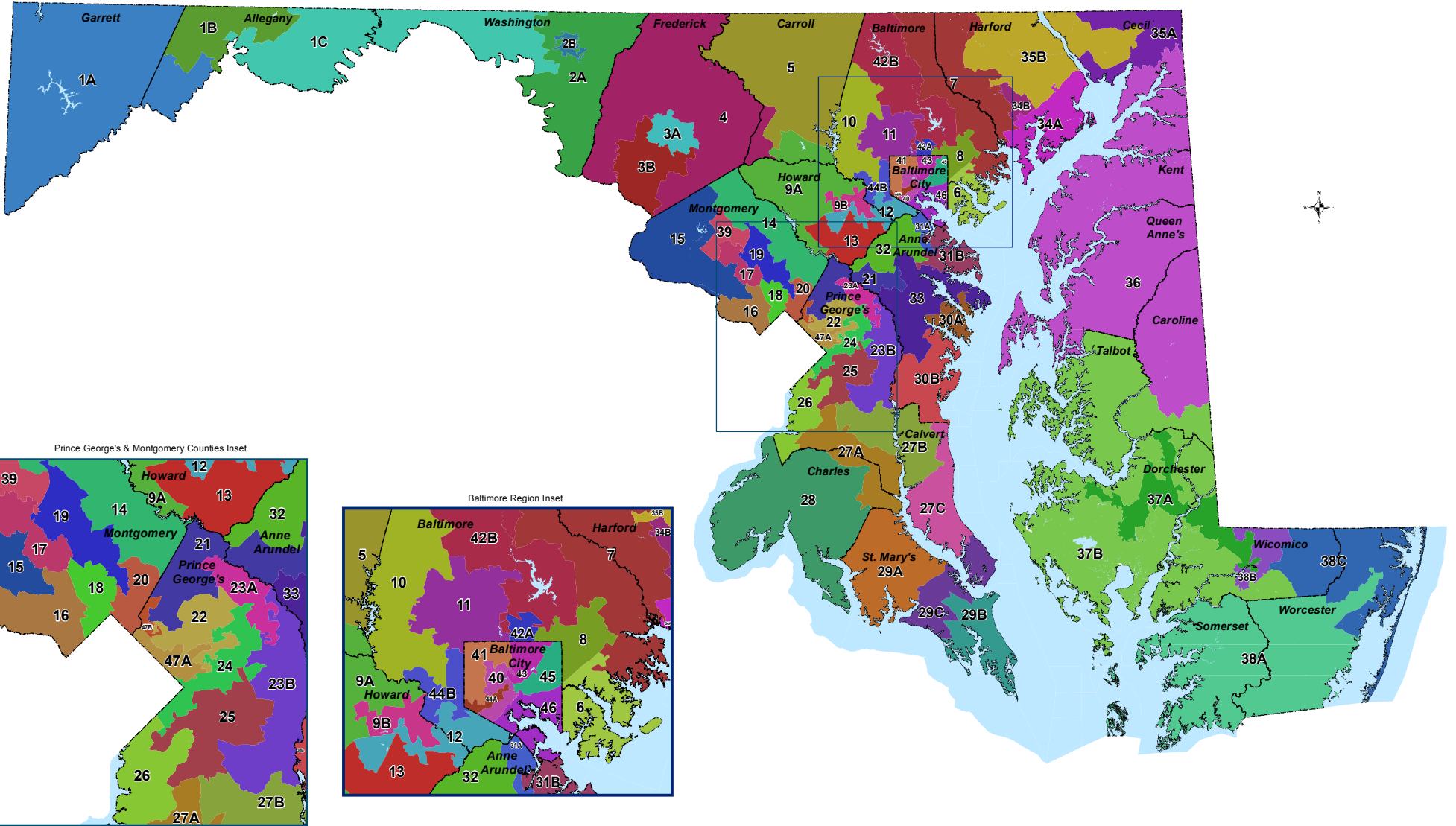
Because the ACS is a sample of a population, its results are subject to sampling error. This error also existed in the previous “long form” but due to the larger sample size it was generally not reported by the Census Bureau. Because of the methodology and the smaller sample sizes used to create the ACS, the reported data may have larger errors than experienced data users are used to seeing. The Census Bureau now reports a margin of error (MoE) based on a 90 percent confidence level that allows data users to understand just how accurate the data is and how it should be used. Generally, three-year period estimates will have a smaller MoE than one-year estimates, and five-year period estimates will have the smallest MoE. Estimates with too few sample cases to create a reliable estimate are marked with the letter “N” in the tables. For more information on this subject, please refer to *American Community Survey Multiyear Accuracy of the Data (3-year 2010-2012 and 5-year 2008-2012)*, available online from the U.S. Census Bureau at http://www.census.gov/acs/www/Downloads/data_documentation/Accuracy/MultiyearACSAccuracyofData2012.pdf.

On February 24, 2012, Maryland's Legislative Districts, based on Census 2010 redistricting, took effect. The data in this handbook are for these district boundaries. These districts are displayed in the following map, but an interactive legislative district map can be found on the Maryland Department of Planning's web site at <http://planning.maryland.gov/Redistricting/redistrictingLegislativeIMap.shtml>

Additional data for legislative districts in a profile format can be on the Maryland Department of Planning's State Data Center web site at http://planning.maryland.gov/MSDC/American_Community_Survey/2008-2012/Legislative/2008-2012ACS_LD.shtml

Maryland 2012 Legislative Districts

SJR 1/HJR 1
February 24, 2012



General Demographics

From the American Community Survey's
2008 – 2012 Five-Year Estimates

2008-2012 American Community Survey Five-Year Estimates for Maryland Legislative Districts (House of Delegates)

	Total Population	MoE* +/-	Median Age	MoE* +/-	Percent Age 65 & Over	MoE* +/-	Percent Foreign Born	MoE* +/-	Percent Speak English "Less than Very Well"	MoE* +/-	Percent Age 65 & Over Living Alone	MoE* +/-	Percent Female Headed Household with own Children under 18	MoE* +/-
<i>Jurisdictions</i>														
Legislative Subdistrict 1A	41,239	536	42.5	0.8	18.2	0.5	1.2	0.3	1.3	0.8	12.3	1.2	5.8	1.1
Legislative Subdistrict 1B	40,876	795	41.0	0.8	17.3	0.7	1.9	0.6	0.8	0.3	14.6	1.5	6.2	1.3
Legislative Subdistrict 1C	41,151	1,041	41.0	0.8	18.0	0.8	1.4	0.3	1.1	0.3	13.8	1.3	4.9	1.0
Legislative Subdistrict 2A	88,535	897	41.5	0.6	14.7	0.5	4.1	0.6	2.1	0.4	10.3	0.9	6.1	1.0
Legislative Subdistrict 2B	40,805	347	34.1	1.6	12.8	0.9	7.1	1.4	3.9	1.0	11.8	1.1	12.4	1.8
Legislative Subdistrict 3A	78,084	738	35.6	0.6	11.5	0.6	15.4	1.2	7.2	1.1	8.9	1.0	6.7	1.2
Legislative Subdistrict 3B	38,534	1,059	38.3	1.1	10.5	0.9	10.5	1.5	3.6	0.8	9.9	1.5	5.9	1.2
Legislative District 4	129,959	1,233	40.3	0.4	11.3	0.4	5.1	0.5	2.1	0.3	6.8	0.7	4.4	0.6
Legislative District 5	127,483	851	41.5	0.4	13.6	0.2	3.5	0.4	1.4	0.3	9.2	0.7	5.0	0.8
Legislative District 6	119,967	2,043	38.9	0.8	15.1	0.5	7.0	1.0	3.5	0.8	12.4	0.7	9.2	0.9
Legislative District 7	131,593	2,302	41.7	0.5	14.2	0.5	5.6	0.6	2.3	0.4	7.7	0.7	4.9	0.6
Legislative District 8	121,164	1,800	37.9	0.6	14.7	0.5	10.6	1.0	4.1	0.6	11.4	0.9	7.6	0.8
Legislative Subdistrict 9A	87,536	1,494	42.8	0.6	12.8	0.6	10.2	0.8	4.4	0.6	7.0	0.9	4.2	0.8
Legislative Subdistrict 9B	43,885	1,268	39.8	0.7	10.6	0.7	22.9	1.8	11.3	2.0	6.6	1.2	5.2	1.3
Legislative District 10	120,389	2,221	37.5	0.6	11.3	0.5	14.4	1.0	6.2	0.8	7.6	0.8	11.0	1.2
Legislative District 11	116,799	2,016	40.7	0.5	16.7	0.5	16.5	1.1	7.4	0.8	12.6	0.9	5.8	0.8
Legislative District 12	119,580	1,904	36.3	0.7	13.6	0.5	12.2	1.0	5.5	0.8	11.2	0.9	7.1	0.8
Legislative District 13	122,551	1,391	36.4	0.5	7.9	0.3	19.3	1.1	8.5	0.8	4.8	0.6	7.3	1.0
Legislative District 14	125,899	1,881	41.3	0.6	13.1	0.6	23.4	0.9	9.4	0.7	8.4	0.8	7.3	0.9
Legislative District 15	119,245	1,801	40.3	0.5	10.5	0.4	29.8	1.1	11.9	0.8	5.8	0.7	5.5	0.9
Legislative District 16	121,950	1,758	43.6	0.5	18.0	0.4	24.3	1.2	7.4	0.7	12.2	0.7	3.4	0.5
Legislative District 17	127,616	863	37.2	0.6	11.7	0.5	37.1	1.3	18.4	1.3	8.7	0.7	7.0	0.8
Legislative District 18	118,681	2,117	37.7	0.7	12.6	0.4	33.2	1.2	19.2	1.2	9.4	0.7	5.6	0.7
Legislative District 19	120,735	1,692	40.9	0.6	17.6	0.5	33.1	1.4	17.4	0.9	14.2	0.9	6.2	0.9
Legislative District 20	120,499	2,118	34.7	0.6	9.3	0.4	37.0	1.2	19.8	1.0	7.6	0.7	6.9	0.8
Legislative District 21	127,097	1,677	30.8	0.5	8.9	0.5	23.1	1.2	9.5	0.7	7.0	0.7	7.0	0.8
Legislative District 22	126,474	2,463	33.0	0.5	8.3	0.4	32.0	1.4	12.2	1.1	5.7	0.6	9.7	1.0
Legislative Subdistrict 23A	39,007	1,612	36.3	1.2	8.7	1.0	19.8	2.1	6.3	1.5	3.2	0.9	9.0	1.8
Legislative Subdistrict 23B	79,452	1,456	39.4	0.7	10.7	0.6	10.7	1.3	3.1	0.7	7.5	0.8	8.3	1.4
Legislative District 24	113,637	2,610	36.4	0.8	10.1	0.4	11.6	0.8	3.5	0.7	7.1	0.7	13.8	1.0
Legislative District 25	116,967	2,424	36.6	0.7	9.7	0.4	7.5	0.8	1.9	0.4	6.2	0.6	13.4	1.3
Legislative District 26	117,777	2,269	39.7	0.6	12.3	0.5	10.7	0.9	4.3	0.6	7.0	0.8	10.0	1.0
Legislative Subdistrict 27A	43,102	1,470	39.7	1.0	10.7	0.7	5.4	1.1	2.5	0.9	5.0	1.2	8.1	1.5
Legislative Subdistrict 27B	43,751	1,338	41.3	1.1	10.6	0.7	3.9	0.7	1.6	0.5	4.8	1.1	4.1	1.0
Legislative Subdistrict 27C	41,901	1,020	39.9	0.9	10.3	0.6	3.1	0.7	1.3	0.4	7.5	1.1	7.5	1.1

* MoE: Margin of Error

2008-2012 American Community Survey Five-Year Estimates for Maryland Legislative Districts (House of Delegates)

	Total Population	MoE* +/-	Median Age	MoE* +/-	Percent Age 65 & Over	MoE* +/-	Percent Foreign Born	MoE* +/-	Percent Speak English "Less than Very Well"	MoE* +/-	Percent Age 65 & Over Living Alone	MoE* +/-	Percent Female Headed Household with own Children under 18	MoE* +/-
Legislative District 28	128,292	946	37.0	0.4	9.5	0.2	5.4	0.5	2.1	0.4	5.9	0.6	8.9	0.9
Legislative Subdistrict 29A	43,051	1,294	38.7	2.0	11.9	0.9	1.4	0.4	1.0	0.4	6.7	1.1	5.4	1.5
Legislative Subdistrict 29B	42,233	1,303	31.5	0.6	7.8	0.7	5.7	1.0	3.2	0.9	4.9	1.0	8.2	1.4
Legislative Subdistrict 29C	42,132	1,552	38.5	1.5	12.0	0.9	3.7	0.8	1.3	0.4	9.3	1.5	5.7	1.5
Legislative Subdistrict 30A	83,091	1,857	38.7	1.1	16.2	0.8	12.4	1.3	5.5	0.9	12.3	1.2	5.6	0.9
Legislative Subdistrict 30B	41,774	1,208	42.7	1.1	13.7	0.9	2.8	0.8	0.9	0.3	7.5	1.3	5.7	1.4
Legislative Subdistrict 31A	42,926	1,128	36.4	1.3	12.9	0.7	10.2	1.9	6.8	1.6	10.3	1.5	8.8	1.6
Legislative Subdistrict 31B	83,390	1,577	40.0	0.7	11.4	0.6	4.1	0.7	2.9	0.6	6.2	0.9	4.3	0.8
Legislative District 32	133,055	2,118	34.3	0.5	8.9	0.4	10.9	0.9	4.5	0.5	6.2	0.6	8.5	1.0
Legislative District 33	127,642	1,811	41.2	0.5	12.6	0.5	6.0	0.6	2.6	0.4	7.2	0.8	3.8	0.6
Legislative Subdistrict 34A	78,323	1,314	35.5	0.6	10.1	0.5	6.5	0.9	3.1	0.6	7.8	0.9	11.2	1.4
Legislative Subdistrict 34B	42,100	972	38.9	1.2	13.2	0.9	5.0	1.0	2.9	0.7	10.5	1.4	4.0	1.1
Legislative Subdistrict 35A	41,533	1,238	38.0	1.2	11.9	0.8	2.5	1.0	1.4	0.6	8.9	1.4	6.6	1.8
Legislative Subdistrict 35B	85,886	1,506	41.2	0.5	12.6	0.6	3.2	0.7	1.1	0.4	6.9	1.0	4.0	0.9
Legislative District 36	127,620	1,001	41.2	0.3	15.1	0.3	4.0	0.4	2.3	0.3	10.3	0.9	6.4	0.7
Legislative Subdistrict 37A	43,430	1,574	34.1	1.2	12.2	0.8	8.5	1.2	7.1	1.2	10.1	1.5	16.6	1.7
Legislative Subdistrict 37B	85,216	1,151	45.6	0.5	19.9	0.5	4.2	0.6	1.9	0.5	12.0	0.9	6.6	1.0
Legislative Subdistrict 38A	45,921	577	38.3	0.8	14.6	0.5	4.3	0.8	2.0	0.7	11.9	1.3	8.6	1.6
Legislative Subdistrict 38B	40,530	1,341	32.7	1.1	14.3	0.9	8.8	1.8	5.6	1.9	10.2	1.4	8.2	1.4
Legislative Subdistrict 38C	40,577	757	49.8	0.9	25.1	0.7	4.1	0.9	1.9	0.7	13.3	1.8	3.4	1.0
Legislative District 39	120,199	2,060	34.3	0.5	6.4	0.3	37.1	1.3	19.4	1.2	3.8	0.5	7.4	1.1
Legislative District 40	113,808	3,190	33.8	0.7	12.2	0.5	5.5	0.7	2.3	0.5	13.3	0.9	11.6	0.8
Legislative District 41	113,571	2,686	40.5	0.9	17.1	0.6	7.7	1.0	2.5	0.4	14.6	1.0	9.8	1.0
Legislative Subdistrict 42A	41,609	1,170	33.2	1.1	15.5	0.8	11.5	1.6	4.0	1.2	15.2	1.4	3.6	0.9
Legislative Subdistrict 42B	81,946	1,390	44.5	0.9	18.4	0.7	9.3	1.0	3.7	0.7	12.9	0.8	3.9	0.8
Legislative District 43	119,152	2,410	33.6	0.8	11.3	0.5	7.6	0.8	2.7	0.5	10.4	0.9	10.5	0.8
Legislative Subdistrict 44A	41,550	1,941	33.2	1.6	11.4	0.8	2.5	0.7	1.1	0.5	9.6	1.5	20.2	2.2
Legislative Subdistrict 44B	79,882	1,932	38.1	0.9	12.7	0.6	11.0	1.4	5.0	0.8	9.7	0.8	9.0	1.2
Legislative District 45	114,492	2,614	35.2	1.0	9.9	0.5	5.9	0.8	3.0	0.6	9.2	0.8	14.3	1.0
Legislative District 46	118,071	2,215	31.8	0.4	8.5	0.4	12.0	0.8	8.3	0.9	8.8	0.6	11.3	1.0
Legislative Subdistrict 47A	84,667	1,600	32.9	0.6	8.7	0.5	30.3	1.4	14.0	1.2	7.5	0.8	13.0	1.3
Legislative Subdistrict 47B	43,907	1,693	29.9	0.6	5.0	0.7	59.1	1.9	44.4	2.2	4.1	1.2	9.4	1.7

Source: U.S. Census Bureau, 2008-2012 American Community Survey.
Prepared by the Maryland Department of Planning.

Socioeconomic Characteristics

From the American Community Survey's
2008 – 2012 Five-Year Estimates

2008-2012 American Community Survey Five-Year Estimates for Maryland Legislative Districts (House of Delegates)

	Percent Population Ages 25+ w/ less than High School Degree		Percent Population Ages 25+ w/ Bachelor's Degree or higher		Median Household Income		Percent of Persons Below Poverty Level		Percent Population with No Health Insurance		Percent Unemployed		Percent Receiving SNAP Benefits		Percent with a Disability		
	MoE*	+/-	MoE*	+/-	MoE*	+/-	MoE*	+/-	MoE*	+/-	MoE*	+/-	MoE*	+/-	MoE*	+/-	
<i>Jurisdictions</i>																	
Legislative Subdistrict 1A	14.6	1.3	17.3	1.4	\$45,218	\$2,025	12.9	1.5	13.0	1.4	5.8	0.9	13.1	1.5	15.0	1.1	
Legislative Subdistrict 1B	13.5	1.3	17.5	1.9	\$38,659	\$2,136	17.0	1.8	9.7	1.0	9.2	1.4	13.7	1.6	16.7	1.3	
Legislative Subdistrict 1C	14.3	1.4	13.2	1.5	\$45,258	\$1,672	12.2	1.9	9.9	1.2	10.1	1.3	14.5	1.5	18.5	1.2	
Legislative Subdistrict 2A	13.3	1.0	21.6	1.1	\$64,086	\$1,903	7.3	1.0	8.9	1.1	6.1	0.8	5.3	0.9	12.9	0.9	
Legislative Subdistrict 2B	18.7	1.7	15.2	1.7	\$37,819	\$1,868	23.4	2.3	13.3	1.5	11.9	1.8	23.2	2.4	18.2	1.4	
Legislative Subdistrict 3A	10.5	1.2	37.8	1.7	\$68,631	\$2,529	9.2	1.5	10.4	1.0	7.3	0.9	9.0	1.2	9.9	0.9	
Legislative Subdistrict 3B	7.0	1.2	40.4	2.5	\$90,547	\$4,245	3.9	1.1	7.0	1.3	5.7	1.5	3.7	0.9	9.2	1.1	
Legislative District 4	6.9	0.7	36.6	1.2	\$93,697	\$2,414	4.0	0.6	6.2	0.7	5.2	0.5	3.7	0.6	8.8	0.6	
Legislative District 5	9.6	0.6	29.8	1.1	\$79,897	\$1,902	6.0	0.8	7.0	0.7	5.3	0.6	5.6	0.8	8.7	0.5	
Legislative District 6	18.9	1.0	10.6	0.9	\$50,202	\$1,596	12.8	1.0	12.7	1.0	11.1	1.1	14.7	1.1	16.3	0.7	
Legislative District 7	8.9	0.7	31.3	1.0	\$83,983	\$2,194	5.1	1.0	7.0	0.8	6.3	0.7	4.2	0.6	10.3	0.6	
Legislative District 8	10.3	0.9	29.3	1.2	\$62,120	\$1,755	7.6	0.9	9.8	1.0	6.9	0.7	6.7	0.8	10.9	0.7	
Legislative Subdistrict 9A	4.4	0.7	54.3	1.6	\$125,767	\$3,062	2.4	0.5	3.9	0.8	2.8	0.5	1.8	0.6	6.7	0.5	
Legislative Subdistrict 9B	4.1	1.0	64.3	2.2	\$114,450	\$4,868	3.9	1.2	8.1	2.3	4.3	0.9	3.2	1.2	6.5	0.8	
Legislative District 10	8.9	0.9	36.7	1.4	\$69,587	\$1,835	9.0	1.1	10.7	1.1	8.4	1.0	7.6	0.9	9.5	0.7	
Legislative District 11	4.8	0.7	55.6	1.4	\$76,613	\$2,066	5.9	0.7	6.9	0.8	5.4	0.7	4.6	0.6	9.0	0.5	
Legislative District 12	9.9	0.9	46.3	1.4	\$76,710	\$2,270	8.1	0.9	8.5	0.7	7.0	1.0	5.7	0.8	9.7	0.6	
Legislative District 13	6.1	0.8	55.7	1.3	\$102,109	\$2,727	5.4	0.9	8.7	1.0	5.8	0.7	5.2	0.8	6.7	0.6	
Legislative District 14	6.5	0.7	53.1	1.6	\$101,782	\$3,342	5.3	1.0	8.7	0.8	7.2	0.8	3.9	0.6	8.6	0.6	
Legislative District 15	4.1	0.6	66.1	1.2	\$127,500	\$3,566	4.0	0.7	6.6	0.8	5.6	0.5	2.9	0.6	5.8	0.5	
Legislative District 16	2.2	0.4	80.9	1.0	\$137,396	\$5,077	3.1	0.5	3.6	0.5	3.3	0.4	0.8	0.2	7.0	0.5	
Legislative District 17	8.4	0.8	56.0	1.4	\$88,148	\$2,365	7.4	1.1	12.9	1.0	5.0	0.6	5.7	0.8	7.6	0.6	
Legislative District 18	13.9	1.3	54.8	1.0	\$91,664	\$3,008	8.9	1.3	15.8	1.2	6.8	0.7	5.6	0.8	7.2	0.5	
Legislative District 19	12.7	1.0	47.4	1.4	\$87,259	\$2,867	7.3	1.0	13.4	1.1	7.0	0.9	5.8	0.8	9.3	0.6	
Legislative District 20	14.1	1.2	50.2	1.2	\$73,590	\$2,293	9.4	1.1	18.7	1.1	8.2	0.8	5.9	0.8	7.0	0.6	
Legislative District 21	12.4	1.1	38.8	1.4	\$75,551	\$2,129	11.2	1.1	12.3	0.9	7.2	0.7	5.2	0.8	8.3	0.6	
Legislative District 22	19.6	1.4	28.8	1.1	\$62,685	\$2,193	9.1	1.0	21.6	1.2	8.5	0.6	8.4	0.9	7.3	0.5	
Legislative Subdistrict 23A	7.2	1.6	43.8	2.6	\$91,512	\$4,014	4.2	1.2	10.4	1.6	6.2	1.0	3.4	1.0	7.9	1.1	
Legislative Subdistrict 23B	5.2	0.9	44.8	1.7	\$102,701	\$3,283	3.6	0.9	7.2	0.9	6.6	1.1	2.8	0.7	7.5	0.6	
Legislative District 24	10.3	0.9	29.7	1.2	\$68,930	\$1,733	9.3	1.0	10.2	0.9	9.8	1.0	10.4	1.0	8.2	0.6	
Legislative District 25	9.0	0.8	25.3	1.1	\$75,294	\$2,146	6.6	1.0	11.0	0.9	9.2	0.8	8.6	0.9	8.3	0.6	
Legislative District 26	10.2	1.0	26.7	1.2	\$80,029	\$2,022	6.1	0.9	11.8	1.2	11.6	0.9	7.9	1.0	8.9	0.7	
Legislative Subdistrict 27A	10.1	1.7	24.1	2.4	\$97,080	\$5,879	4.8	1.5	10.1	1.6	8.4	1.6	5.4	1.4	7.9	0.8	
Legislative Subdistrict 27B	5.9	1.0	31.6	2.2	\$113,607	\$4,140	2.6	0.8	5.1	1.0	6.3	1.1	3.3	1.0	7.6	0.7	
Legislative Subdistrict 27C	9.1	1.2	28.7	1.9	\$90,692	\$5,044	5.4	1.2	6.8	0.9	5.9	1.1	7.3	1.5	11.2	1.0	

* MoE: Margin of Error

2008-2012 American Community Survey Five-Year Estimates for Maryland Legislative Districts (House of Delegates)

	Percent Population Ages 25+ w/ less than High School Degree		Percent Population Ages 25+ w/ Bachelor's Degree or higher		Median Household Income		Percent of Persons Below Poverty Level		Percent Population with No Health Insurance		Percent Unemployed		Percent Receiving SNAP Benefits		Percent with a Disability	
	MoE* +/-		MoE* +/-		MoE* +/-		MoE* +/-		MoE* +/-		MoE* +/-		MoE* +/-		MoE* +/-	
Legislative District 28	8.0	0.6	27.4	1.3	\$93,218	\$1,855	6.8	0.9	6.6	0.7	7.1	0.8	7.8	0.8	9.2	0.6
Legislative Subdistrict 29A	11.1	1.4	20.3	1.9	\$89,087	\$3,705	4.2	1.2	8.1	1.9	5.6	1.1	5.5	1.4	10.8	1.1
Legislative Subdistrict 29B	10.8	1.9	30.1	2.7	\$76,616	\$4,355	11.3	2.3	8.1	1.8	5.5	1.3	14.8	2.5	13.2	1.5
Legislative Subdistrict 29C	7.1	1.4	33.6	2.5	\$89,165	\$4,220	5.9	1.5	9.4	1.8	5.4	1.2	7.2	1.7	11.8	1.1
Legislative Subdistrict 30A	8.9	1.0	48.8	1.6	\$82,794	\$3,163	7.2	1.3	9.9	1.2	5.8	0.8	4.5	0.8	9.4	0.9
Legislative Subdistrict 30B	8.3	1.4	32.6	2.0	\$94,620	\$3,682	4.8	1.5	6.4	1.2	7.0	1.3	4.6	1.3	10.2	1.1
Legislative Subdistrict 31A	18.9	2.2	13.5	1.7	\$56,914	\$2,178	12.6	2.1	13.4	1.8	9.6	1.5	12.9	1.6	13.7	1.2
Legislative Subdistrict 31B	11.1	1.1	27.0	1.5	\$92,381	\$2,931	4.7	1.0	7.7	1.1	6.6	1.0	3.5	0.7	9.1	0.9
Legislative District 32	11.7	0.9	28.8	1.1	\$74,654	\$2,786	7.8	1.0	9.1	0.8	6.3	0.8	6.4	0.9	9.7	0.7
Legislative District 33	4.4	0.4	51.5	1.3	\$111,950	\$1,922	2.6	0.4	5.3	0.5	4.9	0.7	2.0	0.5	7.7	0.6
Legislative Subdistrict 34A	10.5	1.0	23.2	1.6	\$61,105	\$2,548	12.8	1.7	9.5	0.9	9.5	1.0	11.8	1.6	12.1	0.8
Legislative Subdistrict 34B	5.9	1.2	37.6	2.5	\$85,341	\$2,419	4.6	1.2	4.3	0.9	4.9	1.0	3.9	1.1	8.1	0.9
Legislative Subdistrict 35A	11.4	1.6	23.4	2.0	\$63,612	\$2,726	8.0	1.7	9.2	1.5	8.7	1.4	9.9	1.7	13.6	1.4
Legislative Subdistrict 35B	10.0	0.9	28.9	1.4	\$84,005	\$3,625	7.3	1.4	6.4	0.9	6.6	0.9	5.4	1.1	10.9	0.7
Legislative District 36	12.6	0.8	25.1	1.1	\$68,926	\$1,749	9.4	1.1	9.8	0.8	7.4	0.7	8.3	0.9	11.9	0.7
Legislative Subdistrict 37A	21.4	2.1	14.0	1.9	\$35,822	\$1,455	24.7	2.2	16.8	1.7	16.0	2.1	27.6	2.6	14.1	1.3
Legislative Subdistrict 37B	11.7	1.0	29.5	1.2	\$61,457	\$1,323	9.1	0.9	10.6	0.9	8.2	0.9	9.5	0.9	13.6	0.9
Legislative Subdistrict 38A	19.0	1.8	17.0	1.3	\$44,184	\$3,031	18.5	2.2	13.1	1.7	8.6	1.5	17.1	2.2	15.3	1.3
Legislative Subdistrict 38B	11.4	1.7	32.5	2.2	\$52,940	\$2,836	15.6	2.5	11.1	1.7	8.7	1.6	8.6	1.7	11.2	1.1
Legislative Subdistrict 38C	8.5	1.0	28.2	1.9	\$61,372	\$3,598	8.2	1.8	9.9	1.2	8.0	1.5	5.4	1.3	13.1	1.3
Legislative District 39	10.2	1.0	45.4	1.5	\$86,434	\$3,915	6.9	1.2	14.8	1.0	6.5	0.7	6.9	0.9	6.3	0.5
Legislative District 40	24.8	1.3	23.0	1.1	\$32,330	\$1,144	30.6	2.0	15.1	1.1	16.8	1.3	24.3	1.2	18.0	0.9
Legislative District 41	16.0	1.2	29.3	1.5	\$43,525	\$1,394	18.6	1.8	11.4	1.0	13.3	1.5	15.9	1.3	16.0	0.9
Legislative Subdistrict 42A	4.8	1.2	62.6	2.4	\$71,046	\$3,388	10.3	1.7	6.2	1.2	4.5	0.9	3.0	0.7	7.9	0.9
Legislative Subdistrict 42B	6.2	0.7	49.8	1.4	\$86,676	\$2,444	5.6	0.9	5.0	0.7	5.0	0.7	2.4	0.7	9.4	0.7
Legislative District 43	15.1	1.1	32.8	1.4	\$44,451	\$1,440	19.9	1.6	12.4	0.9	11.0	1.1	17.1	1.2	12.7	0.7
Legislative Subdistrict 44A	25.2	2.1	10.9	1.3	\$30,449	\$1,534	30.6	2.8	13.5	1.6	19.4	2.2	27.7	2.6	16.2	1.3
Legislative Subdistrict 44B	10.6	1.2	32.8	1.8	\$62,958	\$2,925	9.2	1.5	9.8	1.3	7.8	0.9	10.6	1.1	10.3	0.8
Legislative District 45	20.4	1.3	16.9	1.1	\$38,554	\$1,591	21.3	1.4	13.8	1.1	15.0	1.1	21.0	1.2	14.7	0.8
Legislative District 46	23.9	1.2	32.9	1.0	\$49,428	\$1,454	24.2	1.6	17.5	1.1	11.1	1.1	19.3	1.2	13.8	0.8
Legislative Subdistrict 47A	24.0	1.5	18.9	1.2	\$55,183	\$1,773	14.2	1.5	23.7	1.4	11.0	0.9	12.2	1.3	7.8	0.6
Legislative Subdistrict 47B	49.5	3.3	15.8	1.7	\$56,136	\$3,298	16.9	2.0	45.4	2.4	11.7	1.6	8.4	1.9	5.8	0.8

Source: U.S. Census Bureau, 2008-2012 American Community Survey.
Prepared by the Maryland Department of Planning.

* MoE: Margin of Error

Housing Characteristics

From the American Community Survey's
2008 – 2012 Five-Year Estimates

2008-2012 American Community Survey Five-Year Estimates for Maryland Legislative Districts (House of Delegates)

	Total Housing Units	MoE* +/-	Percent Owner Occupied		Median Home Value	MoE* +/-	Percent of Owners Spending 35% or more of Income on Housing ^		Median Gross Rent	MoE* +/-	Percent Renters Spending 35% or more of Income on Rent		MoE* +/-
			Housing Units	MoE* +/-			MoE* +/-	MoE* +/-					
<u>Jurisdictions</u>													
Legislative Subdistrict 1A	23,668	157	75.9	1.9	\$157,900	\$4,353	23.4	2.9	\$596	\$36	35.0	4.6	
Legislative Subdistrict 1B	17,816	392	69.6	2.1	\$130,700	\$5,070	22.3	3.3	\$609	\$29	46.1	6.2	
Legislative Subdistrict 1C	18,547	403	70.8	2.1	\$153,400	\$6,215	22.6	3.1	\$672	\$41	38.6	4.9	
Legislative Subdistrict 2A	34,026	523	77.7	1.5	\$238,500	\$4,997	28.7	1.9	\$880	\$31	33.8	3.7	
Legislative Subdistrict 2B	18,938	517	41.7	2.2	\$166,300	\$5,443	30.5	4.1	\$800	\$26	43.8	3.6	
Legislative Subdistrict 3A	32,618	474	60.1	1.8	\$274,200	\$6,447	25.9	2.5	\$1,178	\$30	40.4	3.2	
Legislative Subdistrict 3B	15,268	303	75.5	2.4	\$316,200	\$12,360	23.3	3.0	\$1,429	\$71	31.9	5.6	
Legislative District 4	46,615	485	87.2	1.3	\$346,900	\$4,306	24.2	1.6	\$1,118	\$57	43.1	5.0	
Legislative District 5	48,472	342	82.8	1.1	\$317,700	\$4,800	25.5	1.6	\$981	\$36	41.0	3.7	
Legislative District 6	50,481	342	65.0	1.4	\$174,100	\$2,508	28.1	1.8	\$943	\$18	42.6	3.2	
Legislative District 7	50,001	398	83.8	1.1	\$329,800	\$5,177	25.3	1.7	\$1,114	\$32	38.1	4.7	
Legislative District 8	52,472	312	66.7	1.2	\$231,800	\$2,231	24.3	1.7	\$1,131	\$17	43.6	2.8	
Legislative Subdistrict 9A	29,967	353	90.1	1.0	\$525,900	\$10,290	24.0	2.0	\$1,260	\$68	37.5	7.4	
Legislative Subdistrict 9B	15,862	303	72.7	1.6	\$525,300	\$11,179	20.3	2.7	\$1,337	\$36	27.0	5.0	
Legislative District 10	47,806	520	66.3	1.2	\$257,800	\$4,779	29.5	2.0	\$1,149	\$24	41.2	3.5	
Legislative District 11	53,293	437	57.9	1.2	\$343,000	\$6,668	26.3	2.2	\$1,179	\$19	32.0	2.8	
Legislative District 12	49,189	450	63.3	1.3	\$312,800	\$6,832	22.7	1.8	\$1,329	\$33	43.0	2.8	
Legislative District 13	45,905	357	72.2	1.5	\$371,600	\$4,330	21.8	1.8	\$1,426	\$37	38.6	4.0	
Legislative District 14	45,454	352	78.7	1.1	\$449,800	\$4,904	27.4	1.9	\$1,591	\$56	53.9	4.5	
Legislative District 15	42,747	322	83.9	1.1	\$584,900	\$8,736	25.5	1.4	\$1,721	\$61	45.3	5.3	
Legislative District 16	53,483	371	69.9	1.1	\$788,800	\$14,656	22.9	1.7	\$1,864	\$37	30.9	2.7	
Legislative District 17	52,200	740	57.1	1.2	\$415,200	\$10,704	26.8	2.2	\$1,534	\$33	38.1	2.6	
Legislative District 18	45,346	376	66.8	1.3	\$435,100	\$7,664	29.7	2.0	\$1,543	\$52	39.3	3.2	
Legislative District 19	45,224	306	74.2	1.3	\$398,500	\$5,621	29.4	2.0	\$1,463	\$36	48.3	3.6	
Legislative District 20	48,406	347	47.2	1.1	\$430,100	\$5,318	27.3	2.0	\$1,352	\$16	41.9	2.2	
Legislative District 21	45,326	741	60.7	1.4	\$306,700	\$6,311	30.2	2.1	\$1,326	\$29	43.1	2.9	
Legislative District 22	47,231	722	53.8	1.3	\$265,200	\$5,727	39.6	2.4	\$1,218	\$17	40.4	2.6	
Legislative Subdistrict 23A	14,215	286	67.9	2.2	\$344,700	\$6,158	30.3	3.8	\$1,283	\$44	29.5	5.0	
Legislative Subdistrict 23B	30,069	498	83.9	1.4	\$331,200	\$5,951	31.1	2.3	\$1,724	\$76	42.0	5.8	
Legislative District 24	47,655	751	62.0	1.4	\$275,200	\$4,889	38.8	2.0	\$1,214	\$21	42.1	2.8	
Legislative District 25	46,795	639	67.3	1.5	\$273,000	\$4,324	33.6	1.8	\$1,226	\$26	43.6	3.1	
Legislative District 26	46,622	401	70.5	1.5	\$296,700	\$4,553	35.6	1.9	\$1,182	\$21	37.1	3.0	
Legislative Subdistrict 27A	15,390	441	85.8	2.1	\$319,000	\$10,105	29.4	3.2	\$1,454	\$106	41.6	10.2	
Legislative Subdistrict 27B	14,750	285	92.7	1.6	\$414,200	\$12,132	28.6	2.5	\$1,371	\$93	43.6	12.7	
Legislative Subdistrict 27C	16,532	236	78.7	2.2	\$361,000	\$7,287	24.4	2.8	\$1,363	\$73	49.9	6.8	

* MoE: Margin of Error

^ Homeowners with a mortgage

2008-2012 American Community Survey Five-Year Estimates for Maryland Legislative Districts (House of Delegates)

	Total Housing Units	MoE* +/-	Percent Owner Occupied		Median Home Value	MoE* +/-	Percent of Owners Spending 35% or more of Income on Housing ^			Median Gross Rent	MoE* +/-	Percent Renters Spending 35% or more of Income on Rent		MoE* +/-
			Housing Units	MoE* +/-			MoE* +/-	MoE* +/-	MoE* +/-			MoE* +/-		
Legislative District 28	48,399	290	80.0	1.2	\$317,400	\$5,369	27.1	1.8	\$1,413	\$49	49.5	4.4		
Legislative Subdistrict 29A	15,847	342	84.6	2.1	\$320,600	\$9,171	21.3	2.6	\$1,209	\$135	28.0	6.6		
Legislative Subdistrict 29B	17,395	391	58.3	2.9	\$280,300	\$12,231	21.8	3.6	\$1,229	\$45	34.6	5.2		
Legislative Subdistrict 29C	17,112	351	77.6	3.0	\$305,700	\$9,585	26.0	3.2	\$1,409	\$123	39.9	8.3		
Legislative Subdistrict 30A	37,179	590	65.0	1.8	\$407,100	\$13,264	30.8	2.6	\$1,432	\$38	38.0	3.1		
Legislative Subdistrict 30B	16,981	295	85.7	2.4	\$396,200	\$14,716	29.1	3.8	\$1,605	\$122	40.9	9.3		
Legislative Subdistrict 31A	17,592	235	64.3	2.3	\$224,600	\$4,466	33.6	3.5	\$1,141	\$54	38.0	5.5		
Legislative Subdistrict 31B	31,364	346	88.5	1.3	\$325,600	\$7,092	24.7	2.2	\$1,387	\$132	49.1	7.2		
Legislative District 32	50,935	616	59.6	1.3	\$293,200	\$4,448	24.3	1.8	\$1,384	\$28	40.4	2.7		
Legislative District 33	48,137	491	87.4	1.0	\$442,700	\$6,174	22.3	1.7	\$1,622	\$81	33.5	4.8		
Legislative Subdistrict 34A	32,680	441	67.2	1.7	\$232,600	\$4,533	28.0	2.7	\$1,024	\$48	40.3	3.6		
Legislative Subdistrict 34B	16,875	350	84.3	1.7	\$276,600	\$5,359	22.0	2.8	\$1,131	\$69	41.1	7.6		
Legislative Subdistrict 35A	17,151	439	70.1	2.0	\$258,900	\$6,686	27.5	3.6	\$967	\$38	42.0	5.6		
Legislative Subdistrict 35B	31,340	479	86.2	1.3	\$308,000	\$7,762	26.0	2.3	\$1,100	\$52	43.8	6.6		
Legislative District 36	55,764	384	77.6	1.2	\$293,500	\$4,320	30.0	1.7	\$970	\$27	38.6	3.3		
Legislative Subdistrict 37A	18,724	608	44.1	2.3	\$157,200	\$6,873	34.7	4.3	\$866	\$27	50.8	4.0		
Legislative Subdistrict 37B	41,746	491	78.2	1.3	\$272,400	\$5,358	29.9	2.3	\$924	\$38	43.3	4.4		
Legislative Subdistrict 38A	19,464	1,002	69.3	2.4	\$176,200	\$8,572	33.6	3.6	\$711	\$42	48.8	5.8		
Legislative Subdistrict 38B	16,799	458	63.1	2.5	\$180,400	\$6,472	29.4	3.8	\$1,076	\$42	42.9	5.9		
Legislative Subdistrict 38C	51,224	403	84.3	2.0	\$275,700	\$8,003	32.3	3.3	\$1,038	\$80	50.4	7.7		
Legislative District 39	43,113	280	71.2	1.4	\$322,200	\$6,503	29.6	2.2	\$1,557	\$35	41.6	3.6		
Legislative District 40	60,977	667	38.2	1.3	\$132,700	\$5,835	28.9	2.7	\$880	\$23	48.7	1.9		
Legislative District 41	51,982	538	55.3	1.6	\$171,000	\$4,129	35.6	2.7	\$944	\$19	45.5	2.4		
Legislative Subdistrict 42A	16,697	252	56.9	1.7	\$323,100	\$8,259	18.2	2.7	\$1,198	\$25	44.6	4.7		
Legislative Subdistrict 42B	33,511	435	79.2	1.2	\$370,500	\$6,001	23.7	1.9	\$1,187	\$28	45.7	4.0		
Legislative District 43	52,839	459	52.4	1.3	\$168,300	\$3,197	28.6	2.0	\$920	\$16	49.2	2.2		
Legislative Subdistrict 44A	21,073	461	44.9	2.5	\$115,500	\$5,303	35.1	4.3	\$864	\$27	51.8	3.7		
Legislative Subdistrict 44B	32,654	397	66.4	1.5	\$241,000	\$3,933	29.8	2.2	\$1,072	\$38	41.4	4.5		
Legislative District 45	55,393	524	53.5	1.5	\$146,100	\$3,144	33.1	2.2	\$872	\$19	54.2	2.5		
Legislative District 46	54,173	648	46.6	1.3	\$217,000	\$5,183	28.1	1.9	\$964	\$25	39.5	2.1		
Legislative Subdistrict 47A	32,503	469	44.9	1.4	\$245,400	\$6,790	43.9	3.1	\$1,113	\$11	39.8	2.5		
Legislative Subdistrict 47B	12,920	256	40.4	2.4	\$225,200	\$10,192	43.8	4.8	\$1,215	\$22	45.0	4.2		

Source: U.S. Census Bureau, 2008-2012 American Community Survey.
Prepared by the Maryland Department of Planning.

* MoE: Margin of Error

^ Homeowners with a mortgage

Revised January, 2014

Journey to Work Characteristics

From the American Community Survey's
2008 – 2012 Five-Year Estimates

2008-2012 American Community Survey Five-Year Estimates for Maryland Legislative Districts (House of Delegates)

	Mean Travel Time to Work (Min.)	MoE* +/-	Percent Workers Commuting 60 min. or longer	MoE* +/-	Percent Commuting on Public Transit	MoE* +/-	Percent Commuting by Carpool	MoE* +/-	Percent Workers Who Work At Home	MoE* +/-	Percent of Households With no Vehicle	MoE* +/-
<i>Jurisdictions</i>												
Legislative Subdistrict 1A	24.7	1.2	6.5	1.1	0.2	0.2	13.7	1.8	5.3	0.9	7.4	1.1
Legislative Subdistrict 1B	21.1	1.6	7.4	1.6	0.6	0.5	11.2	1.6	3.1	0.9	8.9	1.4
Legislative Subdistrict 1C	24.9	1.4	9.2	1.5	0.5	0.3	11.5	1.6	3.7	1.0	8.6	1.0
Legislative Subdistrict 2A	30.3	1.0	14.5	1.2	1.0	0.3	9.3	1.1	4.6	0.7	3.9	0.6
Legislative Subdistrict 2B	23.7	1.3	9.2	1.6	1.9	0.7	15.2	1.9	2.4	0.7	16.0	1.9
Legislative Subdistrict 3A	32.0	1.3	19.2	1.6	3.4	0.7	14.4	1.7	5.3	1.0	7.7	1.0
Legislative Subdistrict 3B	34.8	2.0	21.6	2.2	2.7	0.8	10.5	1.8	6.1	1.3	3.5	1.3
Legislative District 4	35.9	0.8	21.0	1.3	1.6	0.3	9.7	0.9	6.6	0.6	2.9	0.6
Legislative District 5	34.3	0.7	18.1	1.1	1.0	0.3	9.3	0.8	4.6	0.6	4.5	0.5
Legislative District 6	27.3	0.6	8.1	0.8	4.2	0.6	13.9	1.2	1.3	0.3	11.8	0.9
Legislative District 7	33.1	0.6	13.0	0.9	1.2	0.3	9.1	1.0	4.3	0.5	3.2	0.5
Legislative District 8	27.5	0.6	6.4	0.7	3.0	0.5	9.8	0.8	2.3	0.4	8.1	0.8
Legislative Subdistrict 9A	34.0	0.8	13.3	1.1	1.8	0.4	8.0	1.0	7.2	1.1	2.0	0.5
Legislative Subdistrict 9B	28.3	1.0	8.7	1.3	2.3	0.6	7.7	1.5	5.4	1.0	4.0	1.0
Legislative District 10	32.4	0.7	12.3	1.2	7.8	1.0	9.8	1.1	3.3	0.6	6.6	0.7
Legislative District 11	27.1	0.8	7.5	0.9	5.1	0.8	8.8	1.1	4.4	0.6	6.6	0.7
Legislative District 12	27.6	0.7	10.3	0.9	4.5	0.7	8.4	1.0	4.2	0.6	8.0	0.9
Legislative District 13	30.4	0.7	13.2	1.1	5.1	0.7	9.3	1.2	4.5	0.6	3.9	0.7
Legislative District 14	37.5	0.8	18.6	1.1	8.3	0.7	9.3	1.0	5.7	0.8	5.7	0.7
Legislative District 15	34.7	0.7	17.9	1.1	8.0	0.7	8.9	1.1	7.2	0.8	2.7	0.5
Legislative District 16	30.0	0.5	8.1	0.7	16.1	1.0	6.7	0.8	9.8	0.7	7.7	0.8
Legislative District 17	31.2	0.7	15.4	1.1	15.7	1.0	9.9	1.1	4.9	0.6	8.4	0.8
Legislative District 18	32.4	0.6	11.7	1.0	21.8	1.5	11.3	0.9	4.9	0.5	9.9	1.0
Legislative District 19	34.9	0.6	17.4	1.2	15.2	1.1	10.9	1.1	4.4	0.5	7.8	0.9
Legislative District 20	35.3	0.6	15.5	1.1	25.8	1.3	10.2	1.0	4.3	0.5	15.4	1.1
Legislative District 21	31.6	0.7	14.6	1.0	8.7	0.9	11.6	1.2	3.3	0.6	6.2	0.8
Legislative District 22	33.4	0.7	16.0	1.2	19.8	1.1	14.1	1.1	2.0	0.4	10.6	1.0
Legislative Subdistrict 23A	34.1	1.6	17.3	2.3	8.9	1.3	13.3	1.9	4.1	1.0	3.7	1.0
Legislative Subdistrict 23B	37.3	0.9	20.7	1.5	10.3	1.1	9.6	1.1	3.9	0.7	3.1	0.6
Legislative District 24	35.6	0.6	16.5	1.1	21.9	1.3	9.5	1.0	2.4	0.4	11.7	0.9
Legislative District 25	36.3	0.7	18.3	1.1	19.2	1.5	10.2	1.0	2.4	0.5	8.9	1.0
Legislative District 26	38.5	0.9	22.1	1.4	17.5	1.2	10.8	1.2	2.9	0.6	7.8	0.9
Legislative Subdistrict 27A	42.5	1.3	27.4	2.4	9.0	1.6	10.9	1.8	2.5	0.9	2.3	0.8
Legislative Subdistrict 27B	39.1	1.2	25.5	2.4	6.3	1.1	10.6	1.6	5.5	1.1	2.5	1.1
Legislative Subdistrict 27C	40.6	1.6	28.7	2.5	3.5	0.8	12.6	1.9	3.3	0.8	4.1	0.8

* MoE: Margin of Error

2008-2012 American Community Survey Five-Year Estimates for Maryland Legislative Districts (House of Delegates)

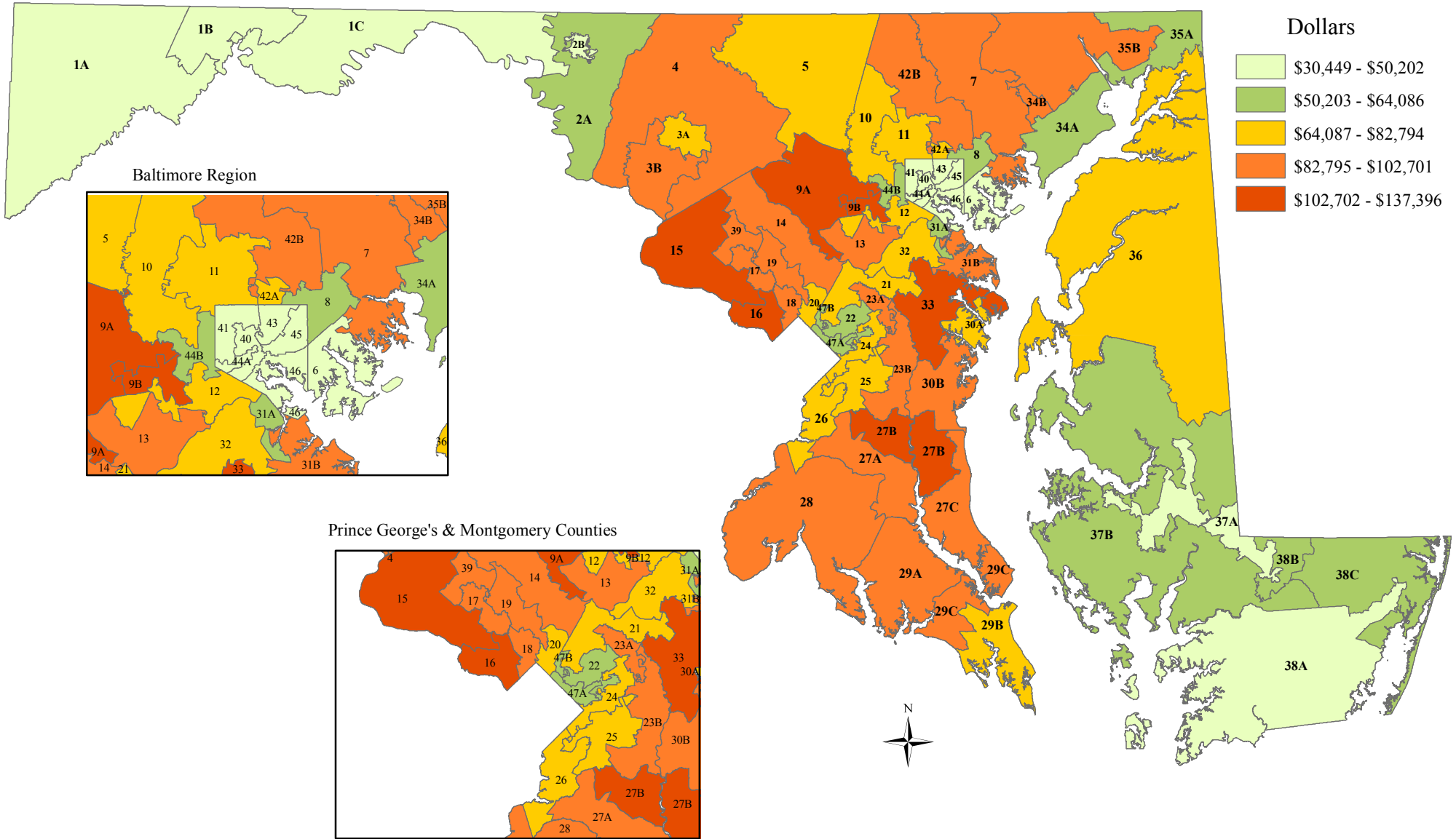
	Mean Travel Time to Work (Min.)	MoE* +/-	Percent Workers Commuting 60 min. or longer	MoE* +/-	Percent Commuting on Public Transit	MoE* +/-	Percent Commuting by Carpool	MoE* +/-	Percent Workers Who Work At Home	MoE* +/-	Percent of Households With no Vehicle	MoE* +/-
Legislative District 28	42.6	0.9	30.4	1.5	7.0	0.8	10.5	0.9	2.8	0.5	3.9	0.7
Legislative Subdistrict 29A	38.5	1.2	24.4	2.3	2.9	0.8	9.6	1.5	3.3	0.8	3.8	1.0
Legislative Subdistrict 29B	22.9	1.7	8.5	1.9	1.7	0.7	7.9	1.5	2.1	1.0	6.2	1.3
Legislative Subdistrict 29C	31.2	1.5	16.6	2.2	1.6	0.7	9.4	1.6	3.0	0.9	4.6	1.1
Legislative Subdistrict 30A	27.6	1.1	12.0	1.2	3.9	0.6	9.7	1.3	7.7	1.0	7.4	1.0
Legislative Subdistrict 30B	38.4	1.3	20.3	2.4	2.6	0.6	10.5	1.8	4.1	0.9	3.1	1.0
Legislative Subdistrict 31A	26.4	1.0	7.5	1.2	3.3	1.0	12.6	2.1	1.3	0.5	10.8	1.4
Legislative Subdistrict 31B	29.1	0.9	8.7	1.1	0.7	0.3	9.1	1.2	3.4	0.7	2.0	0.6
Legislative District 32	27.7	0.7	10.4	1.1	4.3	0.7	9.6	1.1	2.3	0.4	5.0	0.9
Legislative District 33	30.4	0.7	12.7	1.1	2.8	0.5	7.6	0.8	5.3	0.7	1.7	0.4
Legislative Subdistrict 34A	28.1	0.9	11.0	1.2	2.1	0.6	11.2	1.4	2.9	0.6	8.0	1.0
Legislative Subdistrict 34B	31.1	1.2	12.6	1.7	1.5	0.5	8.6	1.6	3.5	0.8	3.9	1.0
Legislative Subdistrict 35A	26.5	0.9	8.2	1.3	1.1	0.5	9.6	1.7	3.7	1.1	4.5	1.0
Legislative Subdistrict 35B	32.2	0.8	14.9	1.4	0.9	0.3	8.8	1.1	4.3	0.8	3.2	0.8
Legislative District 36	32.7	0.9	16.6	1.1	1.2	0.3	10.7	0.9	6.1	0.7	5.1	0.6
Legislative Subdistrict 37A	22.3	1.2	6.3	1.3	1.7	0.9	12.6	2.1	2.0	0.7	16.8	2.0
Legislative Subdistrict 37B	26.1	0.8	10.0	0.9	0.3	0.1	9.5	1.3	5.3	0.7	4.7	0.7
Legislative Subdistrict 38A	23.3	1.0	5.2	1.1	1.7	0.9	8.4	1.5	4.0	1.2	9.1	1.5
Legislative Subdistrict 38B	20.3	1.3	5.6	1.6	0.1	0.2	11.3	2.1	2.7	0.9	5.4	1.6
Legislative Subdistrict 38C	22.5	1.1	4.7	1.2	1.2	0.6	8.3	1.5	6.5	1.5	3.4	0.8
Legislative District 39	35.6	0.7	19.9	1.2	11.4	1.0	13.2	1.0	3.2	0.5	5.6	1.0
Legislative District 40	30.6	1.1	15.1	1.4	24.3	1.6	10.6	1.1	2.7	0.6	39.9	1.5
Legislative District 41	30.3	1.1	12.8	1.1	16.9	1.8	11.0	1.3	3.6	0.6	22.8	1.4
Legislative Subdistrict 42A	25.7	1.2	7.1	1.5	4.5	1.1	8.7	1.5	5.4	0.9	10.6	1.6
Legislative Subdistrict 42B	27.8	0.7	7.2	0.9	1.3	0.3	8.2	1.1	5.9	0.9	5.0	0.9
Legislative District 43	29.0	0.8	11.0	1.1	15.7	1.1	10.0	1.1	3.4	0.7	24.9	1.2
Legislative Subdistrict 44A	33.7	1.6	17.0	2.2	28.7	2.9	8.5	1.9	1.9	0.9	41.3	2.5
Legislative Subdistrict 44B	28.0	0.8	8.0	1.0	6.3	0.9	9.2	1.0	2.4	0.5	8.1	1.0
Legislative District 45	31.3	0.9	13.3	1.4	18.4	1.6	10.2	1.2	2.3	0.5	31.4	1.7
Legislative District 46	28.3	0.8	10.8	1.2	14.2	1.3	12.1	1.4	2.5	0.4	27.1	1.2
Legislative Subdistrict 47A	34.9	0.8	17.6	1.4	26.8	1.6	13.7	1.5	2.1	0.5	17.9	1.5
Legislative Subdistrict 47B	38.8	1.4	23.1	2.3	22.5	2.3	31.1	2.3	1.5	0.7	18.1	2.1

Source: U.S. Census Bureau, 2008-2012 American Community Survey.
Prepared by the Maryland Department of Planning.

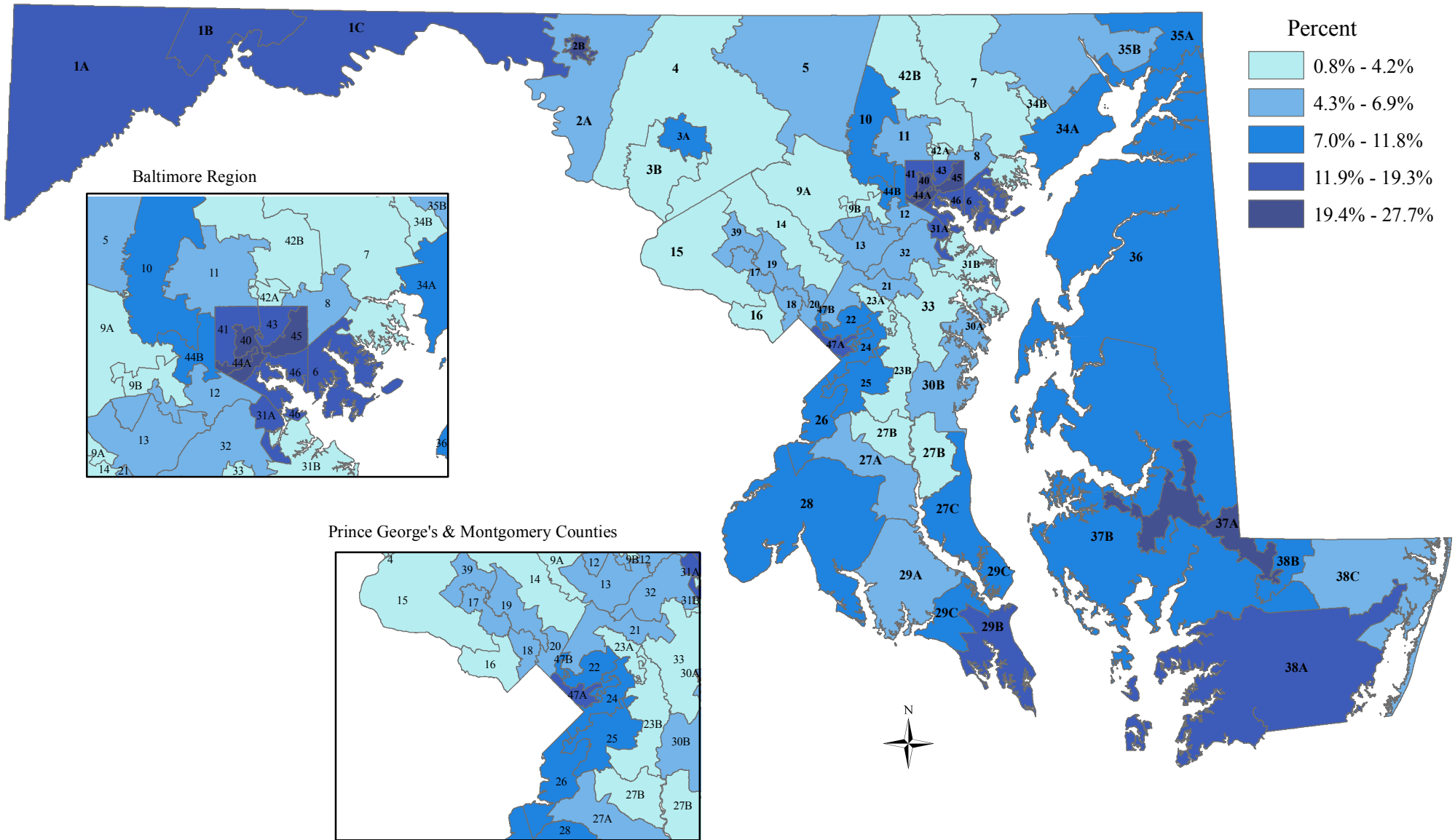
Maps

From the American Community Survey's
2008 – 2012 Five-Year Estimates

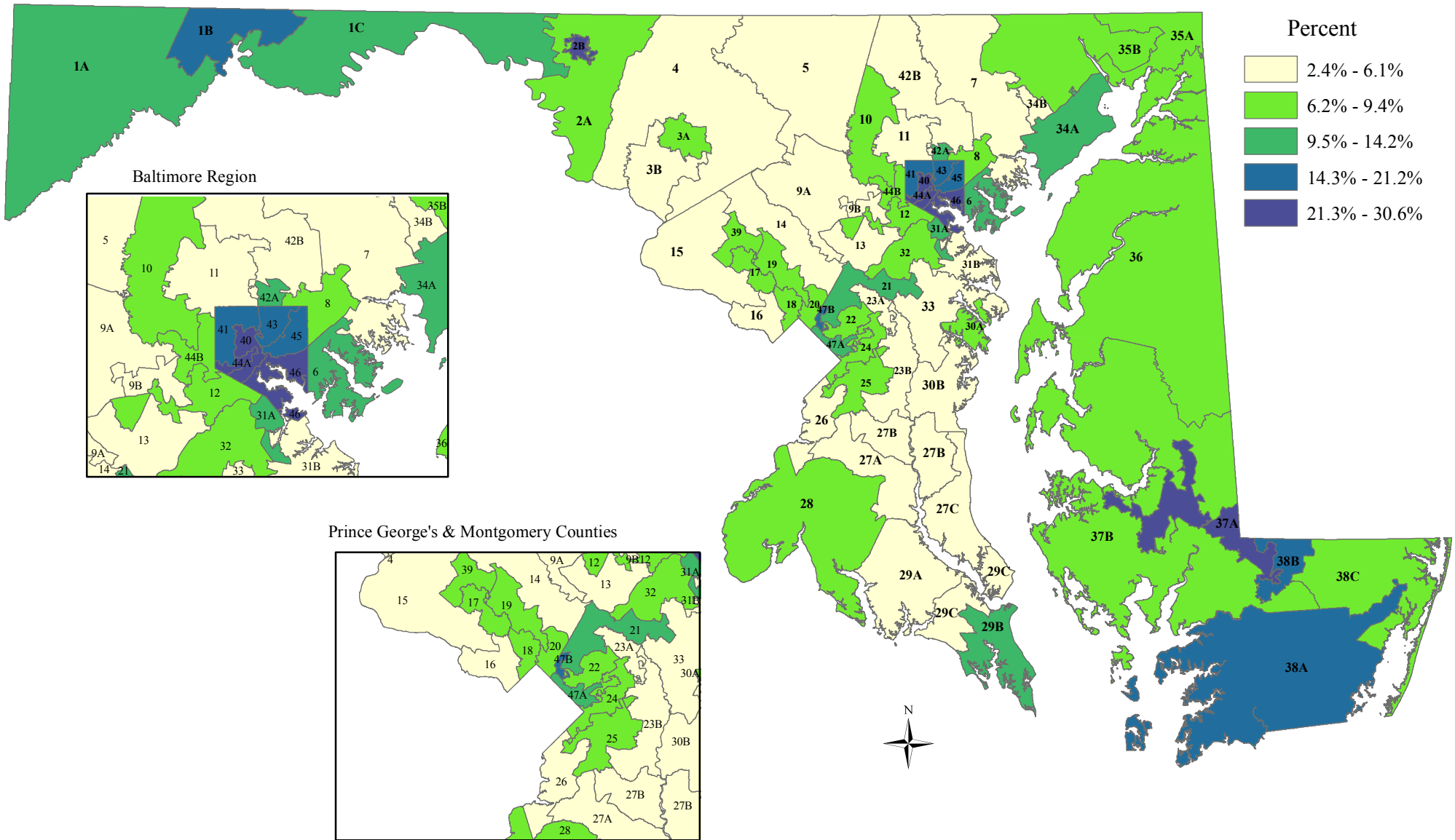
Median Household Income by Legislative District, 2008 to 2012



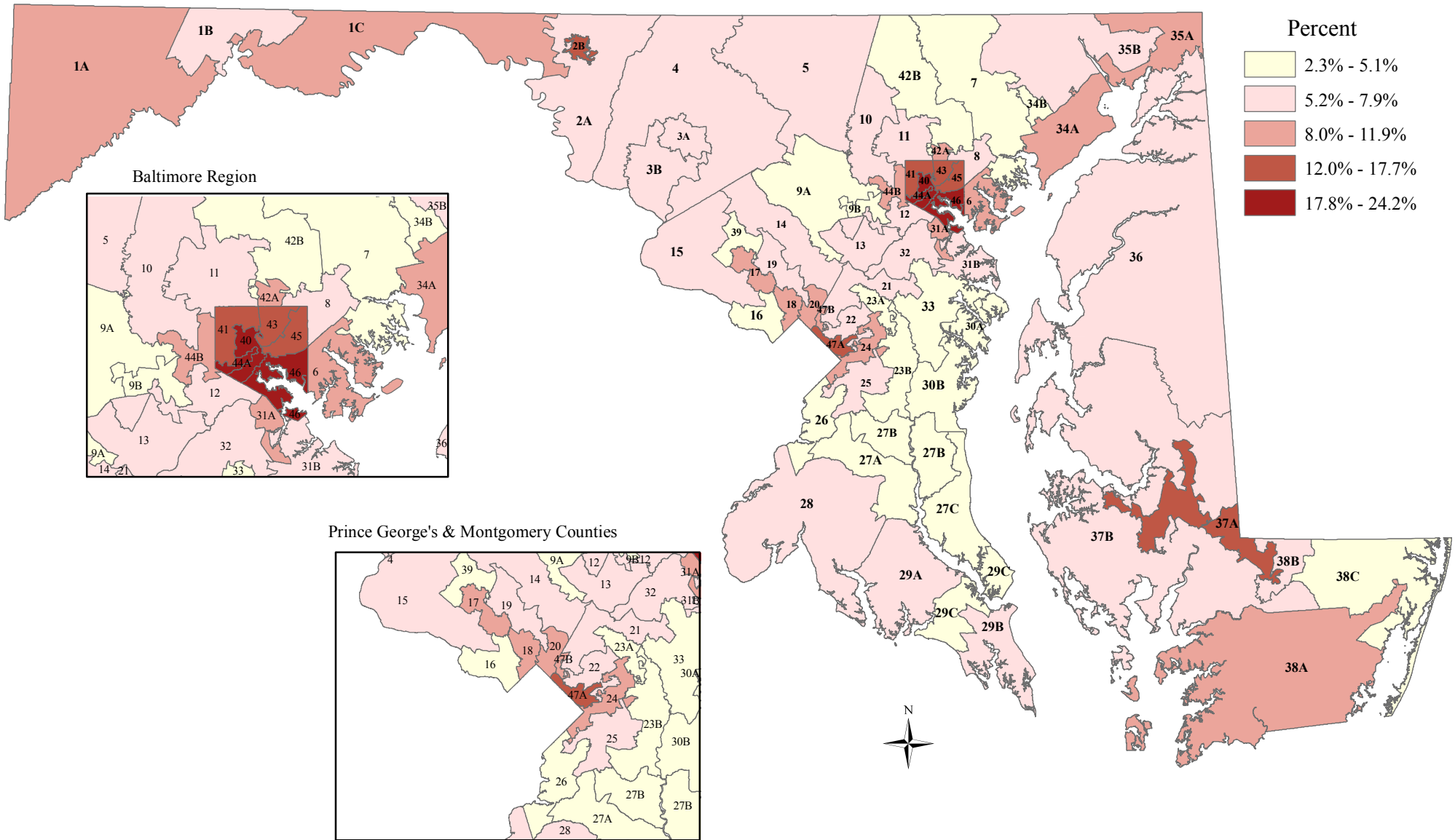
Percent of Households Receiving Food Stamps/SNAP Benefits by Legislative District, 2008 to 2012



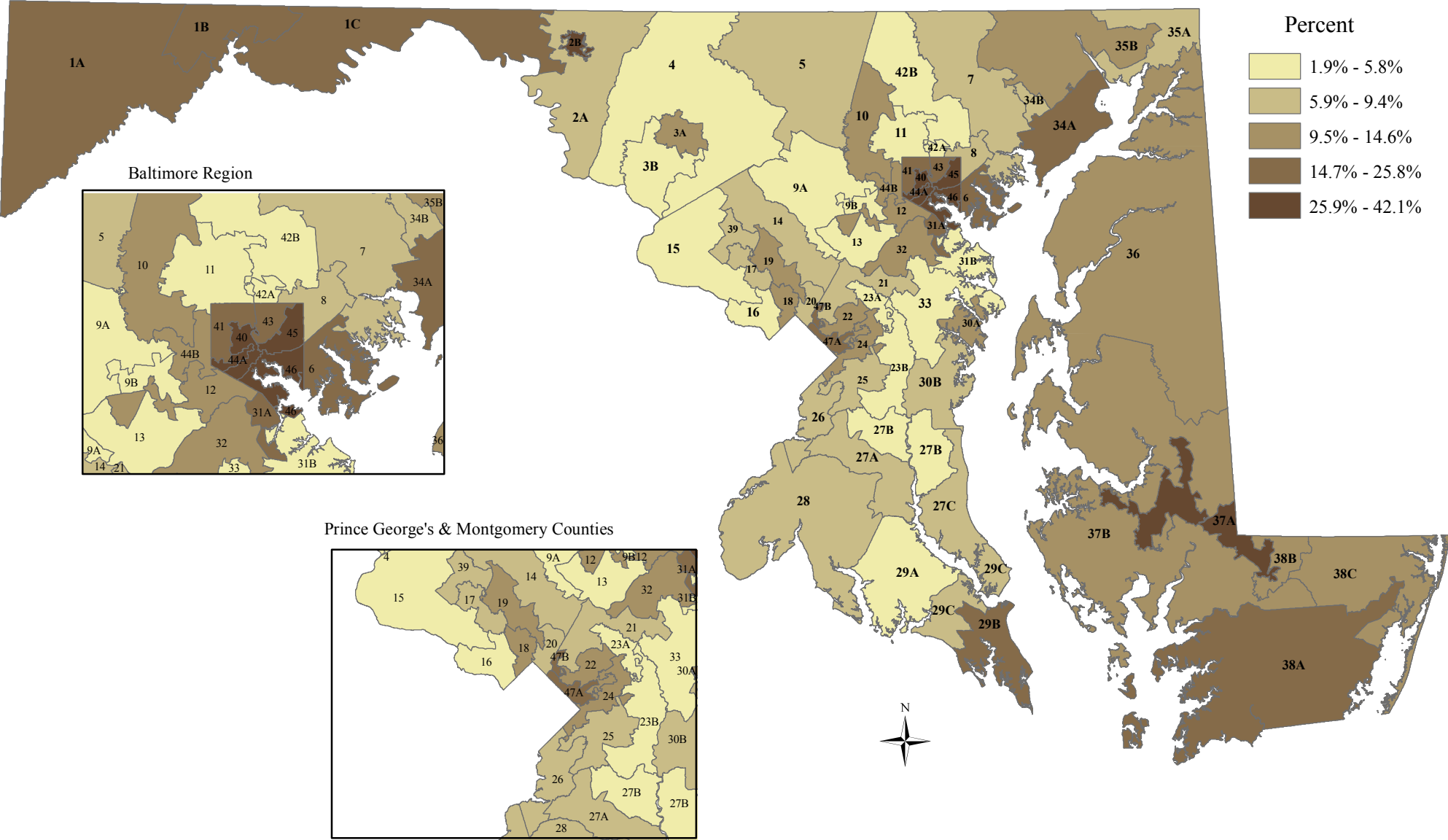
Percent of People in Poverty by Legislative District, 2008 to 2012



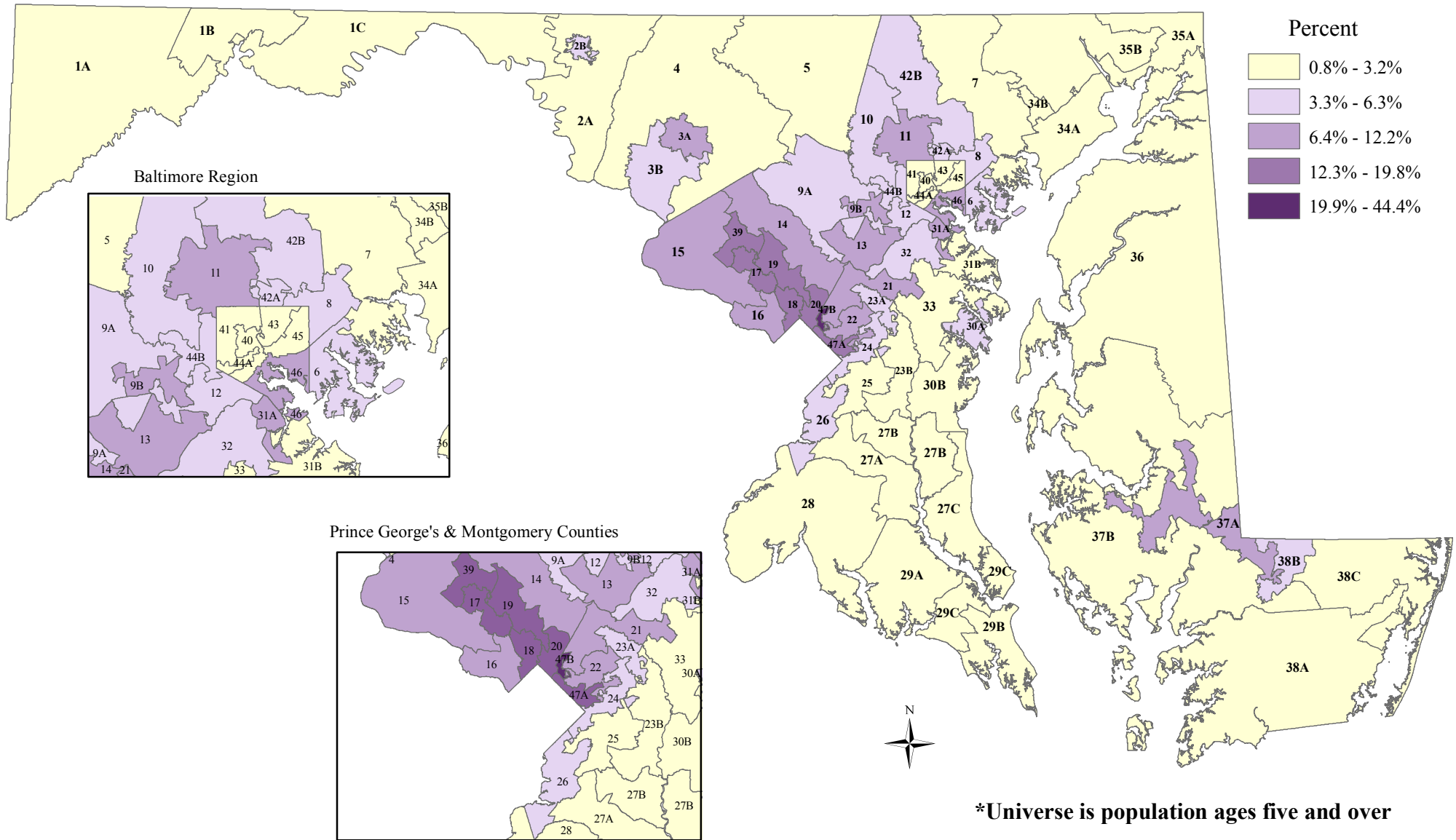
Percent of Population Ages 65+ in Poverty by Legislative District, 2008 to 2012



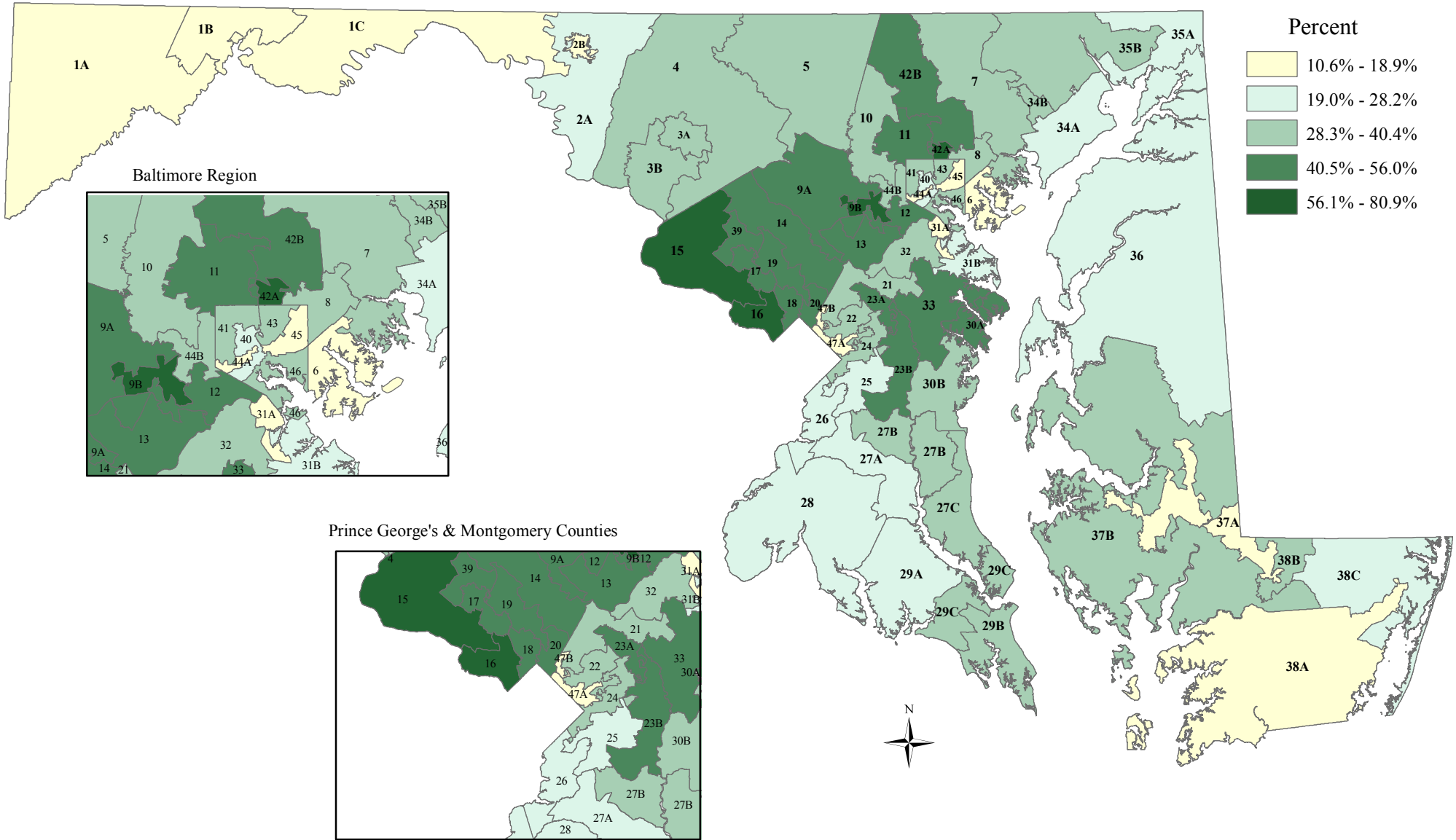
Percent of Families with Related Children Less Than 18 Years Old in Poverty by Legislative District, 2008 to 2012



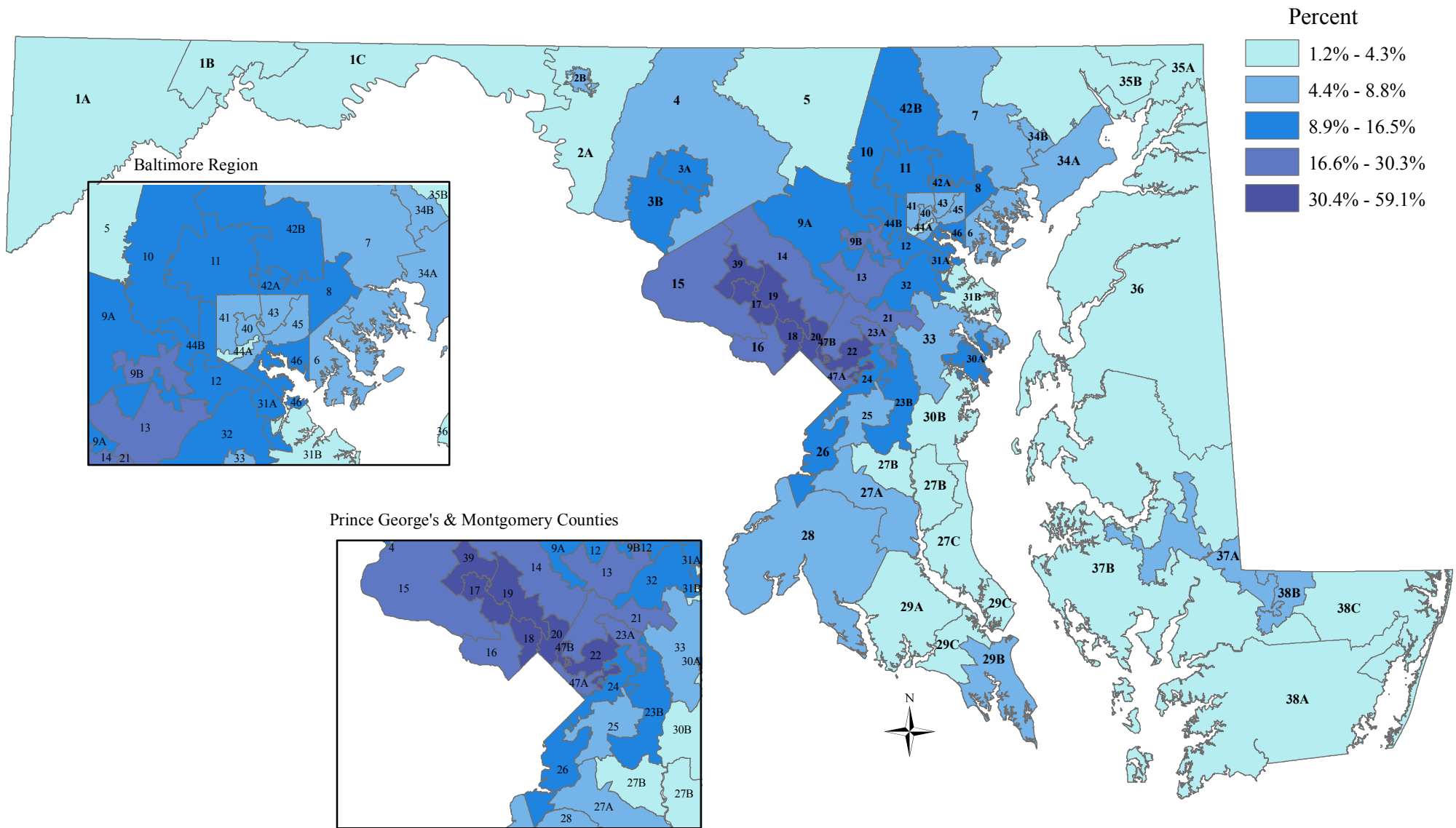
Percent of Population Who Speak English Less Than Very Well by Legislative District, 2008 to 2012*



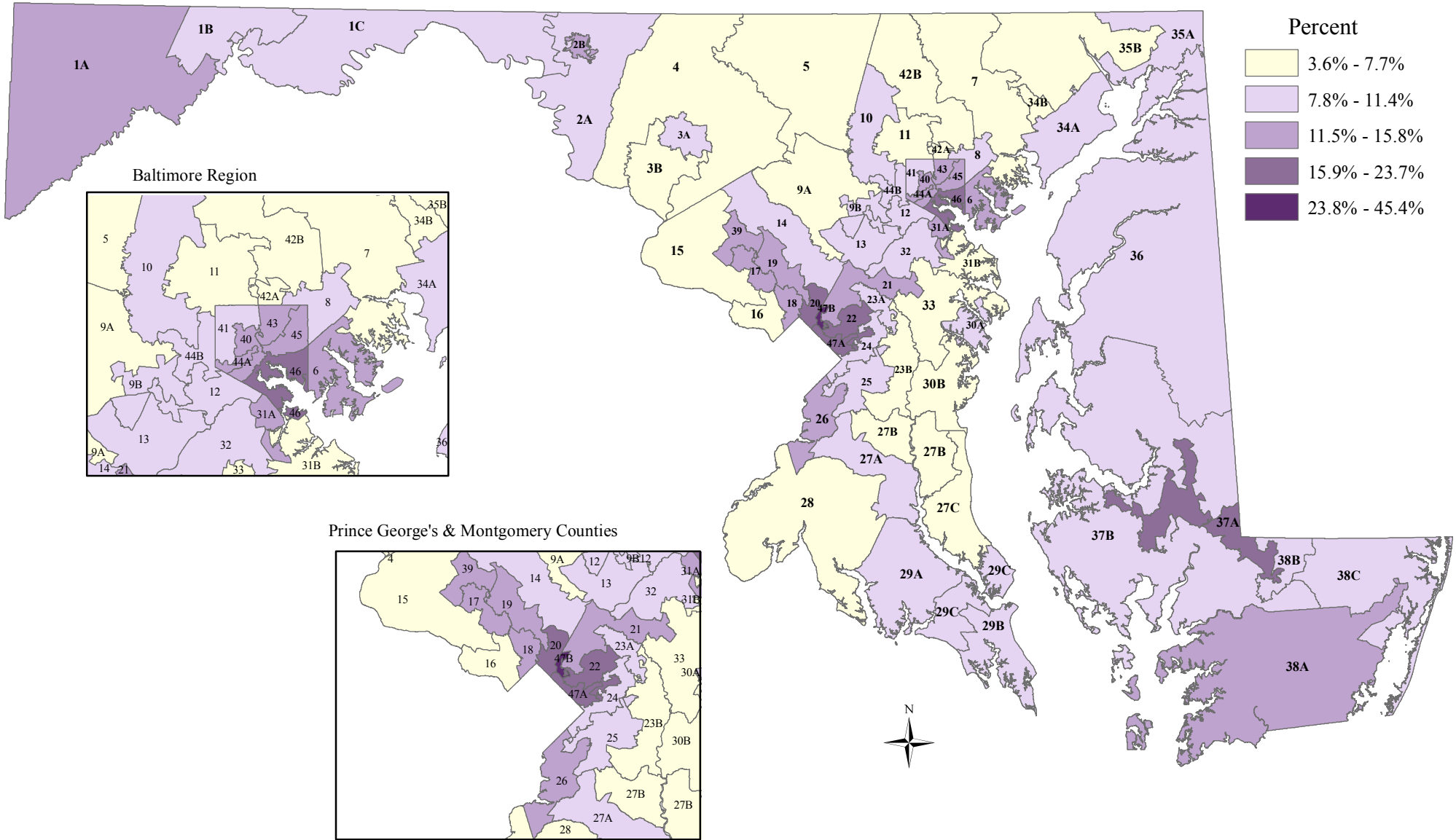
Percent of the Population Ages 25+ With a Bachelor's Degree or Higher by Legislative District, 2008 to 2012



Percent Foreign Born by Legislative District, 2008 to 2012



Percent of Population without Health Insurance by Legislative District, 2008 to 2012



Unemployment Rate by Legislative District, 2008 to 2012

