

**RESOLUTION NO. 19-02  
OF THE MAYOR AND COMMON COUNCIL OF WESTMINSTER**

**AMENDING THE CITY'S 2009 COMPREHENSIVE PLAN TO ADD A GROWTH TIER  
MAP ADOPTED ADMINISTRATIVELY ON DECEMBER 7, 2012, AND INCLUDING  
LANDS ANNEXED SINCE THAT TIME**

WHEREAS, on or about September 28, 2009, the Mayor and Common Council of Westminster ("the City") approved and passed Resolution No. R09-8, which adopted the City's 2009 *Comprehensive Plan*; and

WHEREAS, in 2012, the Maryland General Assembly adopted various additional requirements related to comprehensive plans as part of the Sustainable Growth and Agricultural Preservation Act of 2012, which included the identification and adoption of growth tiers within local comprehensive plans; and

WHEREAS, on December 7, 2012, the City of Westminster administratively adopted a growth tier map; and

WHEREAS, the Maryland Department of Planning has requested that the City formally incorporate the growth tiers in the Plan in coordination with its 2017 *Comprehensive Plan Review*; and

WHEREAS, on December 14, 2017, the Westminster Planning and Zoning Commission recommended adoption of a general plan amendment to address the State-required growth tier map; and

WHEREAS, on December 13, 2018, the Westminster Planning and Zoning Commission held an advertised public hearing on the proposed plan amendment and revised text; and

WHEREAS, having received comments from the Carroll County Planning Department and the Maryland Department of Planning, which were included in the record, the Westminster Planning and Zoning Commission approved the proposed comprehensive plan amendment; and

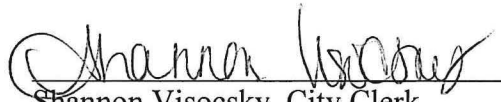
WHEREAS, on January 28, 2019, the Mayor and Common Council of Westminster held an advertised public hearing at which time interested persons were afforded an opportunity to make comments.

**NOW, THEREFORE, BE IT RESOLVED BY THE MAYOR AND COMMON COUNCIL OF WESTMINSTER** that the 2009 Comprehensive Plan for the City of Westminster be and hereby is amended to incorporate the City's adopted Tier Map and certain amended text as set forth in Exhibit A hereto, *2009 Comprehensive Plan as Amended*; and

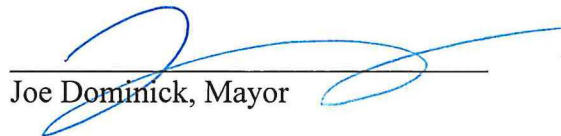
**BE IT FURTHER RESOLVED** by the Mayor and Common Council that this Resolution shall take effect immediately.



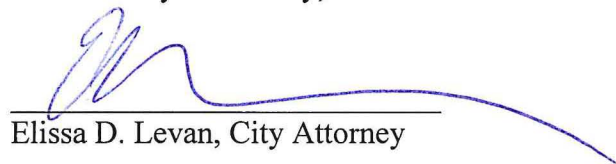
ADOPTED this 28th day of January, 2019

  
Shannon Visocsy, City Clerk

APPROVED this 28th day of January, 2019

  
Joe Dominick, Mayor

APPROVED AS TO FORM AND SUFFICIENCY  
this 28th day of January, 2019.

  
Elissa D. Levan, City Attorney



## Housing for Older Persons

Land within the Housing for Older Persons designation is generally located in existing neighborhoods where there is adequate vacant land available for high-density senior housing. This type of development will afford older persons the opportunity to live in a convenience-driven community that provides larger housing units and preserves personal independence in the home environment.

## Conservation

Areas designated as Conservation are scattered throughout Westminster on recreation space, parkland, stream valleys, areas of steep slopes and soil limitations, and areas where very low-density development is necessary to protect natural resources. Development on Conservation land is not anticipated.

## Public Use

The Public Use designation is an overlay designation that indicates properties that are publicly owned, exclusive of park areas. If a public use were eliminated, the underlying land use would guide future development.

## Employment Campus

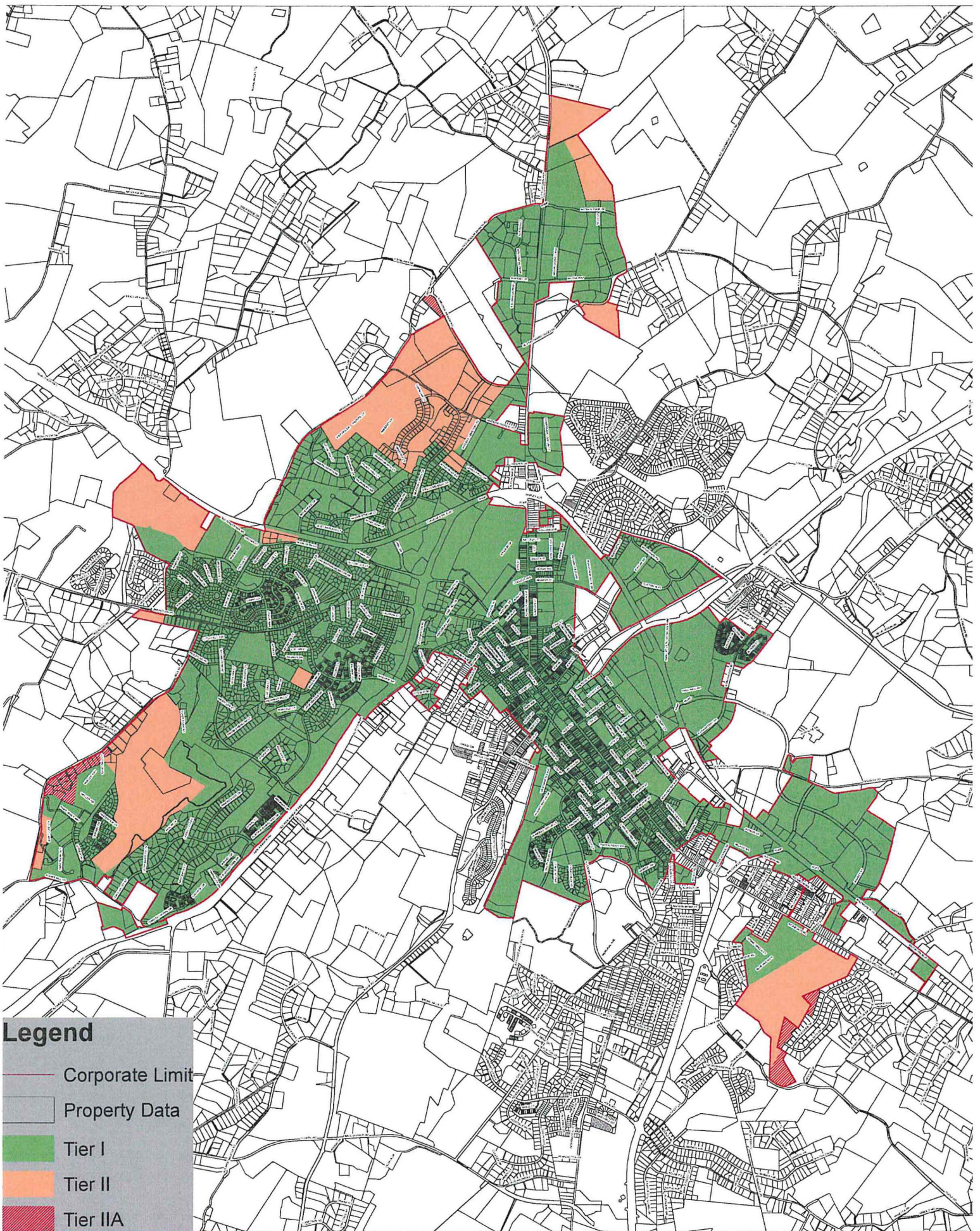
The Employment Campus designation encourages creative, well planned, mixed industrial and commercial development in a campus-like setting. It will require consistent and uniform site layouts; architecture designed to attract business and light industry and employers that provide primarily higher paying jobs requiring highly skilled workers.

## Growth Tiers

On December 7, 2012, the City of Westminster administratively adopted a Growth Tier Map, pursuant to Title 1, Subtitle 5, of the Land Use Article of the Annotated Code of Maryland. The addition of this Growth Tier Map in the 2009 Comprehensive Plan was recommended by the Westminster Planning and Zoning Commission on December 14, 2017, as part of its Mid-Cycle Review in 2017. Per the Growth Tier Map, only Tiers I, II, and IIA are in the City of Westminster. The adopted map on the following page includes the new lands annexed into the City, since 2012, with the corresponding tiers applied to the new lands accordingly.



# Growth Tier map - City of Westminster



## Legend

- Corporate Limit
- Property Data
- Tier I
- Tier II
- Tier IIA



