

LRP -M A P and Land Use Controls

Maryland Department of the Environment
Land Restoration Program

Richelle Hanson

What is the LRP -M A P ?

Publicly available map of the sites for which LRP oversees evaluation and cleanup of potentially impacted properties. Known as the **Brownfields Master Inventory (BMI)**. Includes:

- Voluntary Cleanup Program (VCP)
- Controlled Hazardous Substance Enforcement Division (CHS Enforcement/State Superfund)
- Federal Assessment and Remediation Division (Federal Facilities/ NPL/CERCLA/Site Assessment)

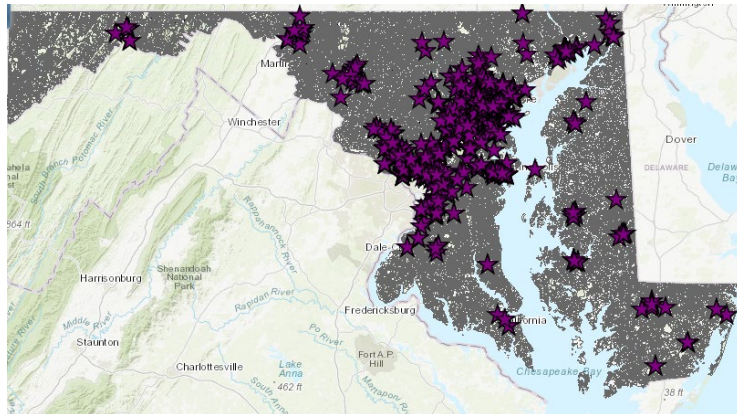
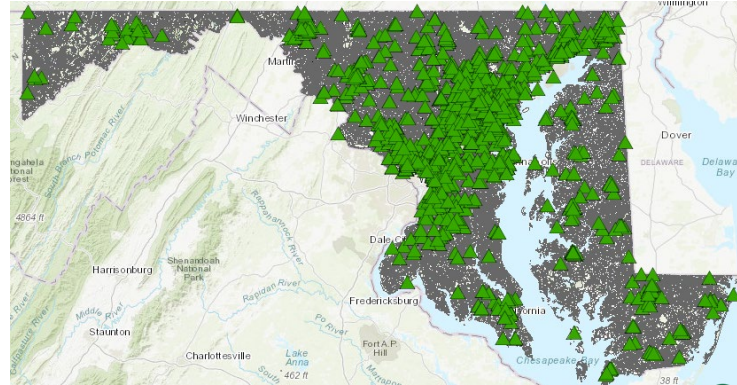
Updated monthly.

What does LRP -MAP show ?

Sites Layer:

Shows general information about BMI sites.

- BMI Number,
- LRP Site Name and alias,
- Address and Parcel Info
- Site type
- General status (active/archived)
- Contaminants of potential concern
- Fact sheet link



Determination Layer:

Shows archived sites including VCP Closures (NFRD/COC), Environmental Covenants, and No Further Action letters (2015-present).

- Includes information on allowed property uses and land use controls.
- Also operates as the Environmental Covenant Registry for all of MDE (currently includes OCP and HWP RCRA sites).

What can I do with LRP -MAP ?

LRP-MAP is a web-based mini-GIS application. You can use it similarly to ArcGIS but it does not have the data analysis capabilities. You can:

- Search for a location and determine whether LRP has a site
- Search for sites by type, county, site name, BMI number.
- Add additional layers from other sources to compare

You can also (so you can do data evaluation, join or intersect data, or select by multiple attributes, etc.):

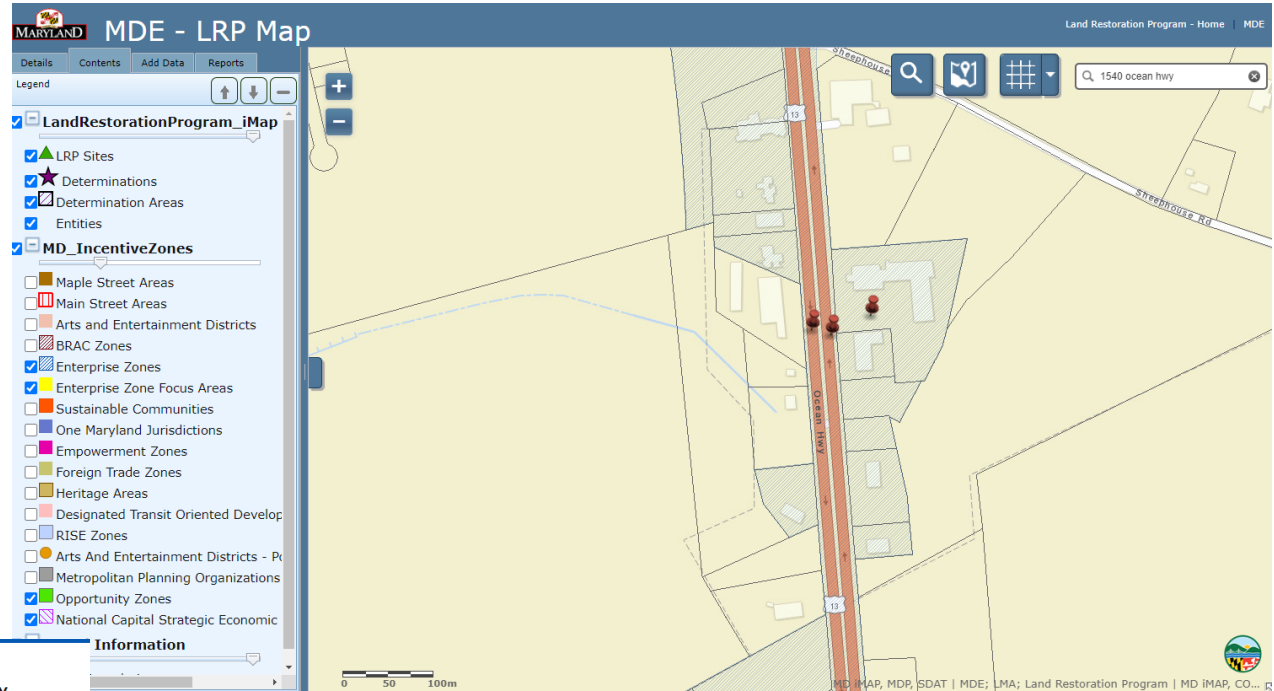
- Download layer packages for use in ArcGIS
- Download kml layers for Google Earth
- Consume LRP data layers as a Web Service from Maryland iMap catalog

LRP -MAP and the BMI are not:

- A list of properties available for redevelopment (many listed properties have already been redeveloped)
- A list of Brownfields properties available for sale
- An exhaustive list of Brownfields in Maryland. A property may be an Brownfield (property with known or perceived contamination) that has not been under the oversight of the LRP and therefore not included on the BMI.

What does that mean for me? How is this useful?

- Initial due diligence screening without waiting for a Public Information Act request (reminder this only includes LRP, not all MDE Programs)
- Example: **1540 Ocean Hwy, Pocomoke City**, listed on Loopnet



 **1540 Ocean Hwy**
Americas Best Value Inn Pocomoke City
Pocomoke City, MD


\$2,000,000
85 Room Hotel
40,014 SF

Not part of the BMI but is located in an Enterprise Zone

330 N Warwick Ave, listed on Loopnet

330 N Warwick Ave
Baltimore Industrial

65,300 SF Industrial
Baltimore, MD



AUCTION ON NOVEMBER 16, 2021

13d 02h 03m 24s

[Register to Bid](#)

- Industrial property with access to Hwy-40
- Excellent owner-user or investment property
- Starting bid \$650,000



330 N Warwick Ave is a 2.21-acre VCP site located in both an Enterprise Zone and an Opportunity Zone. Clicking on the green triangle allows you to find that a VCP application was submitted 07/07/2020 by TR Warwick, LLC but has not been accepted.

The property to the south, Warwick Apartments, is an archived VCP site approved for Tier 1B (restricted residential use) with land use controls and a COC recorded at 20995, pp. 191-205 and EC recorded at 20995, pp. 206-222.

How do I use LRP -M AP ?

Tools

Tab
s

MARYLAND MDE - LRP Map

Land Restoration Program - Home | MDE

Details Contents Add Data Reports

The Land Restoration Program (LRP) of the Maryland Department of the Environment provides financial incentive for the redevelopment of brownfields, which are sites that either qualify for the Voluntary Cleanup Program or are contaminated by oil. Redevelopment of these sites will help revitalize industrial and commercial areas. LRP also administers the 'Superfund' program for the State of Maryland that assesses suspected hazardous water sites, including federal facilities, to control and remove environmental and public health threats through site cleanups and remedial actions. As a public service, LRP distributes their GIS data identifying these site locations in several different file formats. They include OGC Compliant Web Map Services, OGC Compliant Web Feature Services, ArcGIS Web Map Services, and Keyhole markup Language (KML) format.

For more information regarding this site, please contact the

[Land Restoration Program of MDE](#)
- or -
call (410)537-3493

Data Currently Available
[GIS Shapefiles](#)
[KML Files](#)
[Using Services](#)

How to use the application:

Find an address:
Enter an address into the 'Find a place' box on this page to zoom to the closest match.
-or-
In or out icons or a scroll mouse may be used for

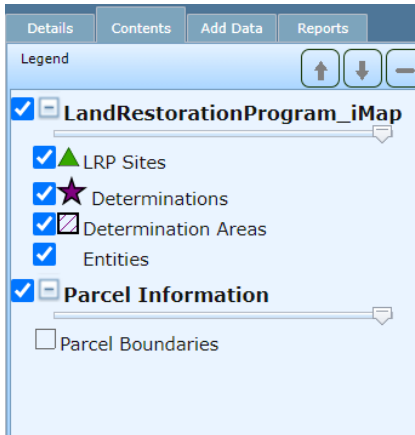
Find a place

Esri, HERE, Garmin, FAO, USGS, EPA, NPS | MD iMAP, MDP

Tabs and Tools

Contents Tab:

- Layers Currently Available in the Map. Standard is LRP Sites, Determinations, Entities (VCP Applicants or Environmental Covenant Primary Holders), and Parcel Information.
- You can change the order using the up/down arrows. Make invisible using the checkboxes and remove using the minus button.
- Sliders allow you to change the transparency of a layer.



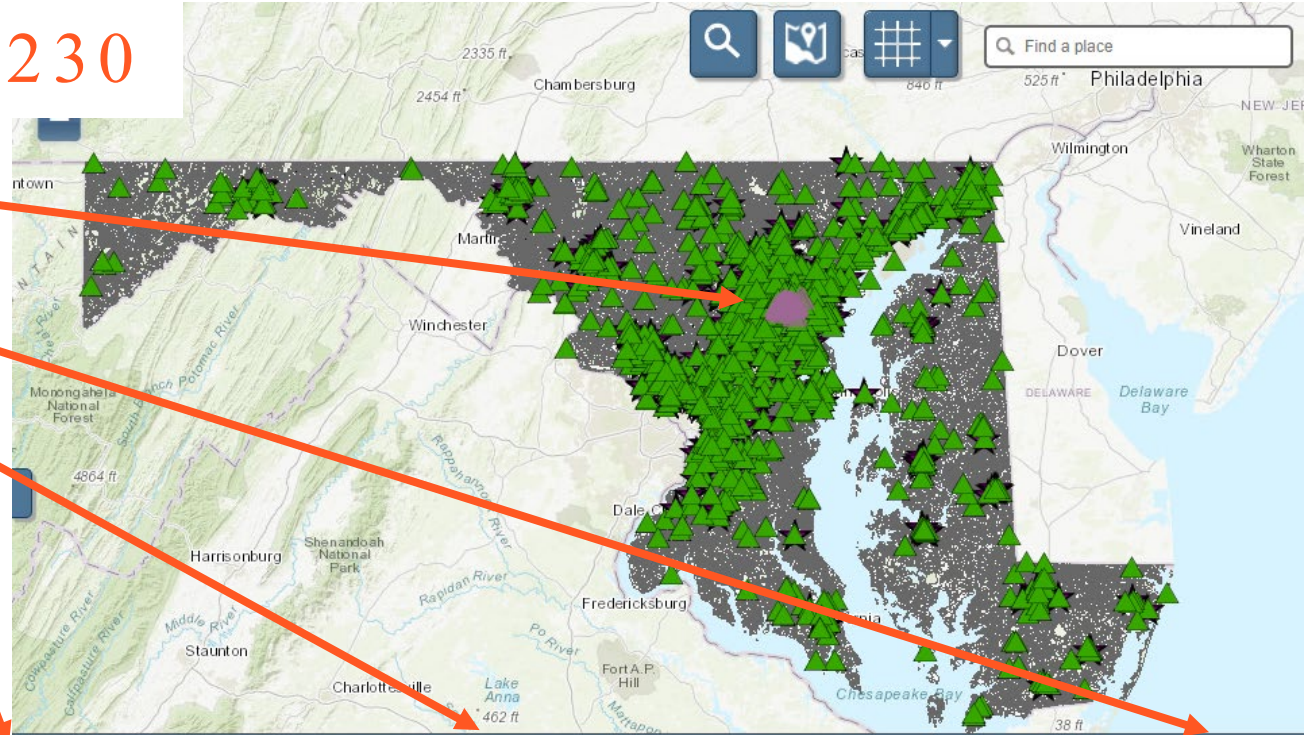
Tools:

1. Print
2. Add Data (from other sources)
3. Search by Attribute (County, BMI #, Zip Code, Site Type, Site Name)
4. Spatial Search (within a distance of a point)
5. Change Background
6. Show Address (places a red pushpin at the address)



Zip Code - 21230

- Highlights Selections
- Can Export Results List to Excel
- Can Zoom to Results
- Gives Summary Table Below Map
- Can Zoom to Individual Sites (zooms in and adds green marker to site)



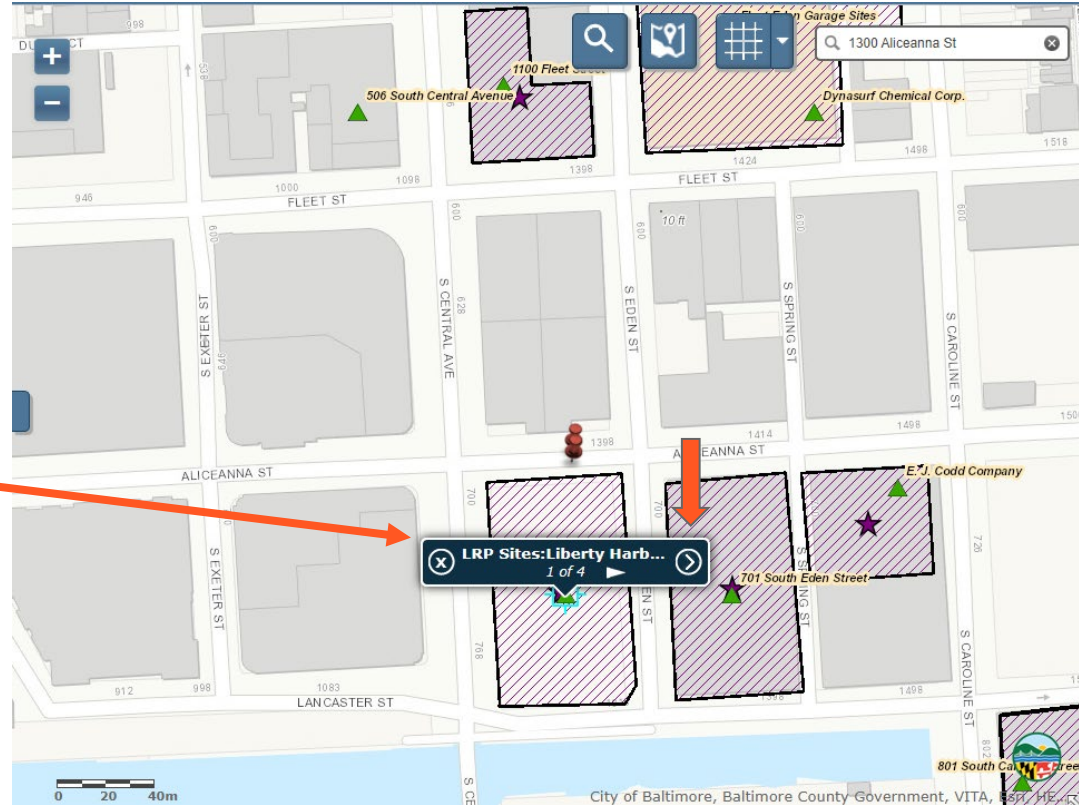
Search Results - 132; Queried by: Zip Code- 21230 ; Zoom To Results

	Site Name	Location of Site	City of Site	State of Site	County of Site	Zip code of site	Other names the site has	Brownfields Master Inventory	Pr...
<input type="checkbox"/>	Former Chesapeake Paperboard Company	1001 East Fort Avenue	Baltimore	Maryland	Baltimore City	21230	McHenry Row I	MD0844	
<input type="checkbox"/>	FNT Realty Cherry Hill	Cherry Hill Road and Metal Road	Baltimore	Maryland	Baltimore City	21230		MD0948	
<input type="checkbox"/>	Baltimore	1415 and 1437	Baltimore	Maryland	Baltimore City	21230		MD0971	

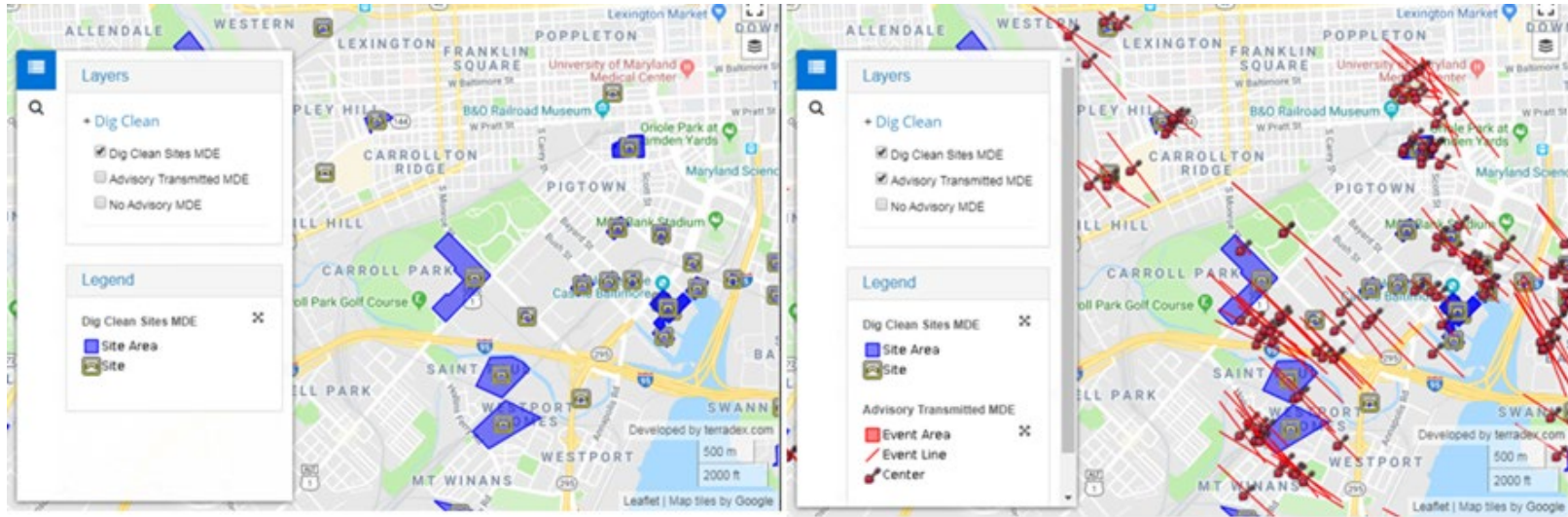


Detailed Information

- Green triangles are LRP Sites
- Purple stars and purple shading are LRP Determinations (Reminder: this is our generic term for multiple closure types)
- If you click on a site, a pop-up will appear that will allow you to see detailed information on any active layers.
- You can use the arrows to view the information from each layer.



How does MDE use the data? Land Use Control Monitoring




- Miss Utility makes their ticket data available via the Search and Status website.
- LRP uses the DigClean system by Terradex to determine where LRP LUCs overlap with Miss Utility requests.

What information is included on a Notification?

- Summary of the Miss Utility Ticket Information including the Ticket Number
- Dig Clean Safety and Land Use Advisory Number followed by a generic definition of Hazardous Substance and Petroleum and Land Use Controls
- Map showing the proposed work location in relation to nearby LRP LUC sites.
- List of LRP LUC sites shown on the map including a general description of LUC on each site and potential contaminants of concern on each site.

TO: JOSEPH D SCRIBELLIFO,
Phone: 301-845-0824
Fax: 301-845-0825
email: JoeStateDrilling@yahoo.com

FROM: Maryland Department of the Environment
 Primary Contact: Richelle Hanson
Phone: 410-537-3453
email: richelle.hanson@maryland.gov

RE: Miss Utility - Maryland Ticket: 19034430

Ticket Priority:	STANDARD	Work Date:	09/17/19
Work Address:	1800 WASHINGTON BLVD, BALTIMORE CITY	Work Done For:	LOCATE/MARK-FROM WASHINGTON BLVD HEAD NORTH WEST ONTO S MONROE ST. THEN TURN LEFT INTO
Near Intersection:	S MONROE ST		LOCATE/MARK-FROM WASHINGTON BLVD HEAD NORTH WEST ONTO S MONROE ST. THEN TURN LEFT INTO THE MONKSCHERRY PARK MONROE ENTRANCE. THE WORK AREA IS IN THE PARKING LOT TO THE RIGHT. WE WILL BE WORKING IN THE PAVEMENT AND GRASS AREAS.
Location Details:			


Work Description: SOIL BORING - Work Done For: 09/17/19 - DW KOZERA INC.

Dig Clean Safety and Land Use Advisory 1219353

Hazardous Substance(s) and/or Petroleum: The Land Restoration Program (LRP) of the Maryland Department of the Environment is notifying you that the work location may be at or near sites where hazardous substance(s), including but not limited to petroleum are likely present in the soil and/or groundwater. Sites are shown on the map below relative to the extent of the planned excavation. The LRP has identified generic categories of contaminants in its database for these sites. Because the information is generic, and not always comprehensive, it is incumbent on you to take suitable precautions to minimize exposure to potentially impacted environmental media by site workers and the public.

Land Use Control(s): The LRP is notifying you that the work location may be at or near sites where hazardous substance(s), including but not limited to petroleum are likely present in the soil and/or groundwater and are subject to certain land use controls (LUCs). LUCs include institutional controls, such as deed restrictions, or engineering controls like an asphalt cap over the soil. Sites are shown on the map below relative to the extent of the planned excavation. A LUC is placed on a property to eliminate an exposure pathway and must be maintained. The LRP has identified the LUCs requiring ongoing maintenance or restoration in the event the engineering control is disturbed.

THIS SUMMARY SHEET SHOULD NOT BE USED AS A SUBSTITUTE FOR REVIEW OF THE LUCs THEMSELVES.



SITES WITH LAND USE CONTROLS SHOWN ON MAP:
Site 1: Montgomeri Park Business Center (Site ID:521, Det ID: 84, BMIN, MD1039)
1005 South Monroe Street Baltimore, MD

Property may be used for commercial use (except for day care facilities) or industrial use. Groundwater use is prohibited or has specific use requirements. Health and Safety Plan required for an excavation. Groundwater contaminants include, but may not be limited to, metals compounds. Soil contaminants include, but may not be limited to, petroleum compounds.

ALTERNATIVES TO VIEW INFORMATION:
View on the Web: <https://digclean.com>, enter under Option 2: 1219353

Sent By Terrades, Inc. on behalf of Maryland Department of the Environment
Terrades at: operations@terrades.com Phone 656-227-3250, Fax 3255 Terrades Reference: pg_eventid=1219353
dig_xlatid(1)= 1: 189120 |
Date: 2019-09-13

How to avoid a potential enforcement action?

- Know and understand the LUCs on your property as described in the NFRD/COC/EC
 - Prior notification requirements (5 days, 30 days, 6 months)
 - Disposal requirements (including sampling)
 - Inspection and record keeping requirements
 - Containment remedy operation, inspection, and maintenance plans attached to NFRD/COC/ECs can specify how future work will occur without MDE oversight.
 - Most LUCs continue in perpetuity.
 - **Ensure that the management company and/or maintenance staff know and understand the LUCs**
- LUCs are directly related to data collected and remedies proposed
 - Reducing costs for sampling or proposing a presumptive remedy leads to future LUC inspection and maintenance costs that exist in perpetuity.

- Submit clear and reproducible figures and legal descriptions for MDE use in NFRD/COC/ECs.

Plan ahead! Notify contractors during the bidding process so their first understanding of notification, repair, or disposal requirements is not upon receipt of a DigClean Advisory.

Who should I contact if I have a question?

About the LRP-MAP, DigClean Advisories, or Land Use Control Compliance

Richelle Hanson, 410-537-3467, richelle.hanson@maryland.gov

About a site

- Site Assessment - CERCLA PA/SI/ESI sites - Peggy Williams
- FUDS - Formerly Used Defense Sites - Peggy Williams, Ira May
- Federal Facility - Federal Facility - Ira May, Curtis Detore
- GWI (Groundwater Investigation - a retired site classification) - Brian Dietz
- NPL - National Priorities List - Ira May
- VCP - Voluntary Cleanup Program - Barbara Brown
- CHS Oversight - CHS Technical Review or Compliance Oversight - Brian Dietz