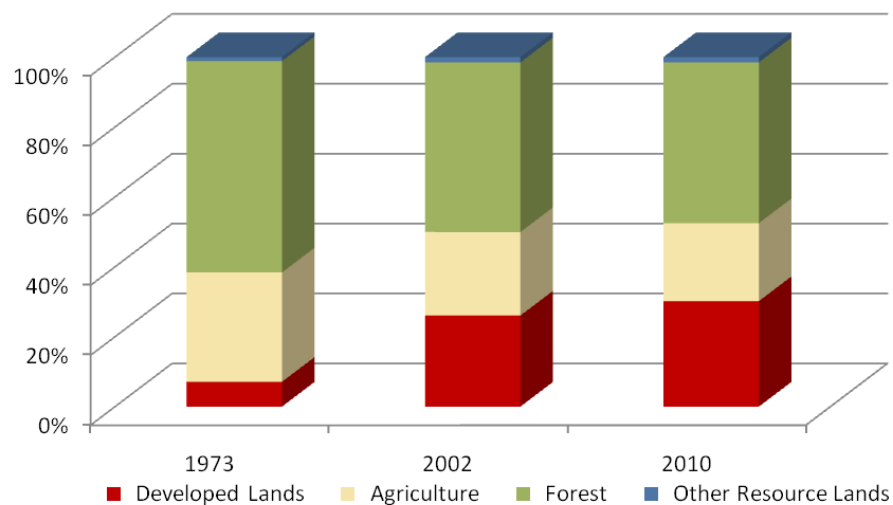


# St. Mary's County

	Land Use in Acres		Land Use Change	
	2002 <sup>3</sup> Acres	2010 <sup>2</sup> Acres	2002-2010 Acres	Percent
Very Low Density Residential <sup>1</sup>	14,375	18,024	3,649	25.4%
Low Density Residential	31,008	34,529	3,520	11.4%
Medium Density Residential	4,054	4,715	662	16.3%
High Density Residential	705	815	110	15.6%
Commercial	2,517	3,065	548	21.8%
Industrial	391	501	111	28.3%
Other Developed Lands/ Institutional/Transportation <sup>1</sup>	7,110	8,021	911	12.8%
<b>Total Developed Lands<sup>5</sup></b>	<b>60,160</b>	<b>69,670</b>	<b>9,511</b>	<b>15.8%</b>
Agriculture	55,167	51,511	-3,656	-6.6%
Forest	112,113	106,211	-5,902	-5.3%
Extractive/Barren/Bare	708	793	84	11.9%
Wetland	2,762	2,725	-36	-1.3%
<b>Total Resource Lands<sup>5</sup></b>	<b>170,750</b>	<b>161,240</b>	<b>-9,511</b>	<b>-5.6%</b>
Total Land	230,910	230,910		
Water	308,483	308,483		

	Land Use in Acres			Land Use Change
	1973 <sup>4</sup>	2002 <sup>3</sup>	2010 <sup>1,2</sup>	1973-2010 Acres
All Residential	9,390	50,142	58,083	48,693
All Non-Residential	7,022	10,018	11,587	4,566
<b>Total Developed Lands<sup>5</sup></b>	<b>16,411</b>	<b>60,160</b>	<b>69,670</b>	<b>53,259</b>
<b>Total Resource Lands<sup>5</sup></b>	<b>214,778</b>	<b>170,750</b>	<b>161,240</b>	<b>-53,539</b>
Total Land	231,190	230,910	230,910	
Water	308,204	308,483	308,483	

**Land Use Change 1973 - 2010**



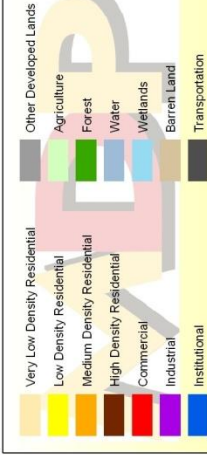
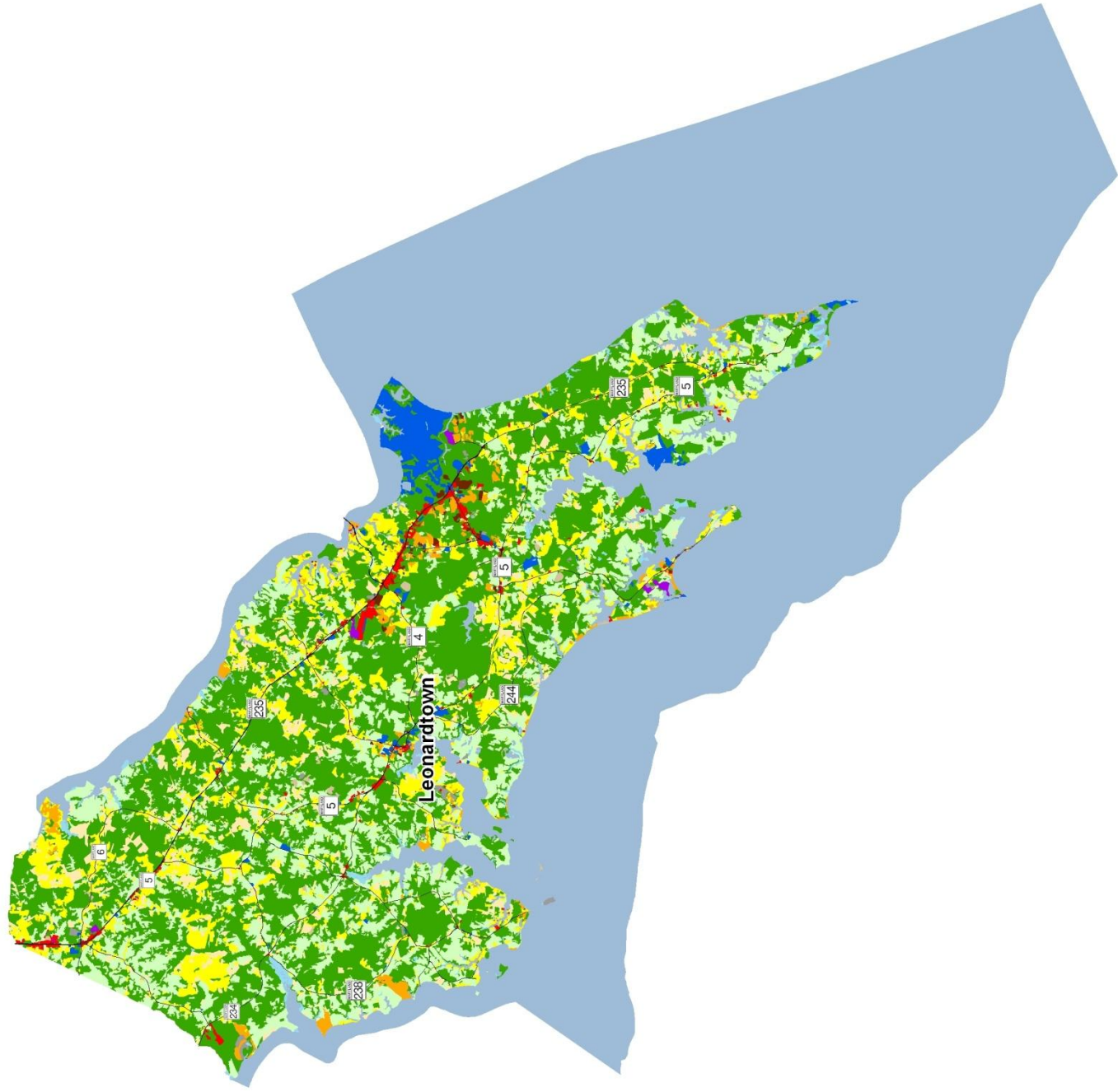
1. Two new categories have been added to the 2010 Land Use/Land Cover layer update; very low density residential development (191,192) and transportation (80).

2. Updates/modifications to the 2010 land use/land cover layers used the 2007 NAIP aerial imagery and parcel information from Maryland Property View 2008.

3. The original 2002 data were mapped using geo-rectified LANDSAT satellite imagery and 2000 MD Property View. In 2010 two new land use categories were added, transportation and very low density residential making it necessary to modify the 2002 land use/land cover layer to incorporate these categories for comparative purposes. Additionally, better imagery and property data information were used to make further modifications. The enhanced 2002 dataset is available upon request.

4. Very low density residential was not mapped in 1973, so there is no data associated with changes. Transportation was not mapped in 1973.

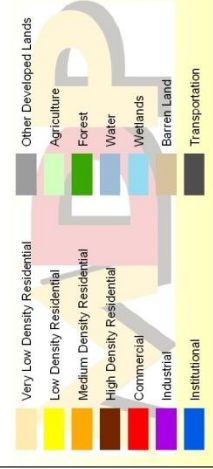
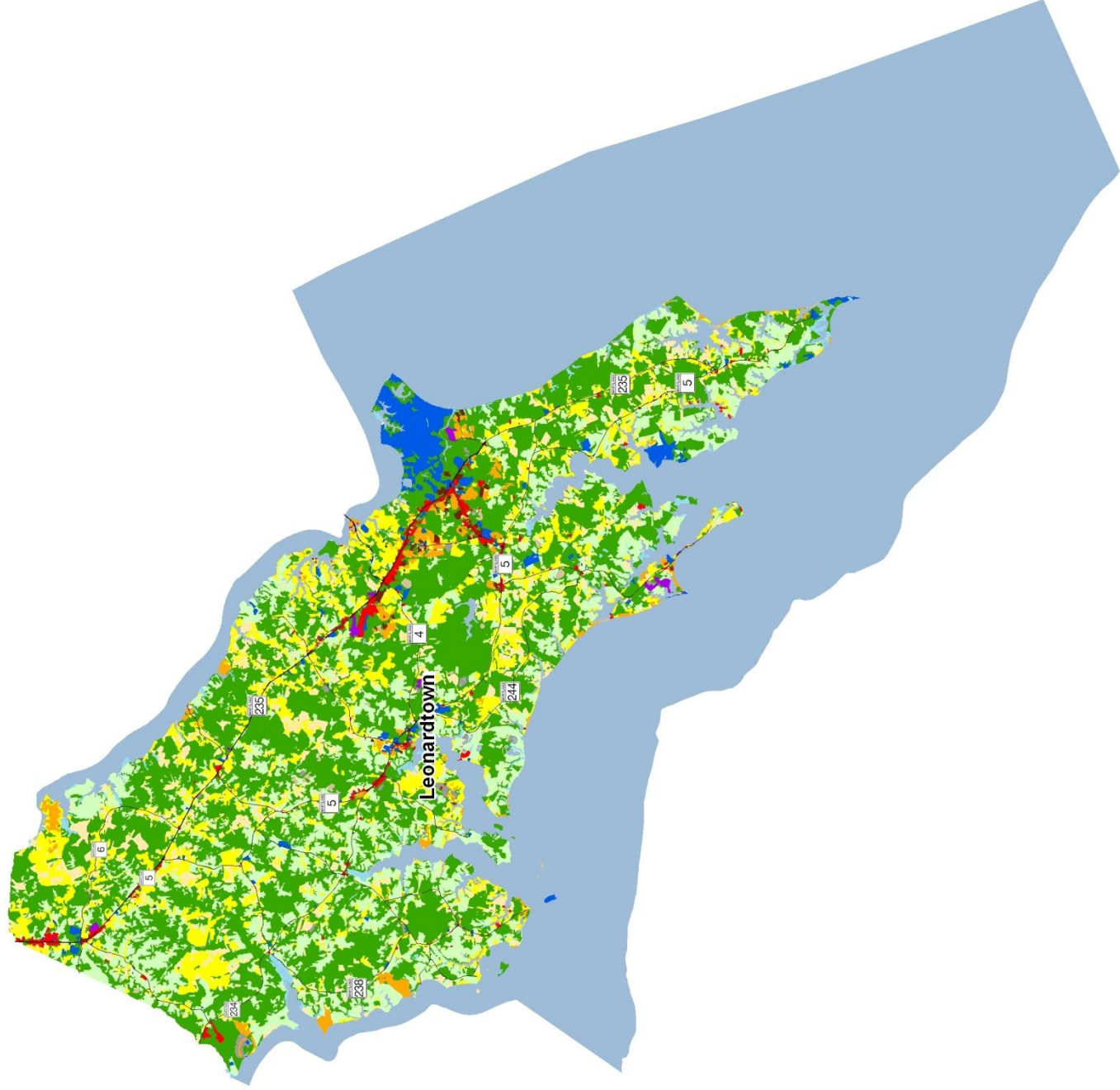
5. As noted above, new land use categories were added in 2010 and associated adjustments were made to 2002 data. Similar adjustments were not made to 1973 data, making it impossible to know how much change from 1973 is due to new development since then, versus misclassified land uses at that time. For these reasons, we suggest reliance only on change statistics for the aggregate land use categories, Total Developed and Total Resource Lands



## St Mary's County 2002 Land Use/Land Cover

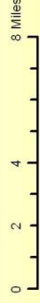
1) The original 2002 data were mapped using geo-rectified LANDSAT satellite imagery and 2000 MD PropertyView. In 2010 two new land use categories were added, transportation and very low density residential making it necessary to modify the 2002 land use/land cover layer to incorporate these categories for comparative purposes. Additionally, better imagery and property data information were used to make further modifications. The enhanced 2002 dataset is available upon request.



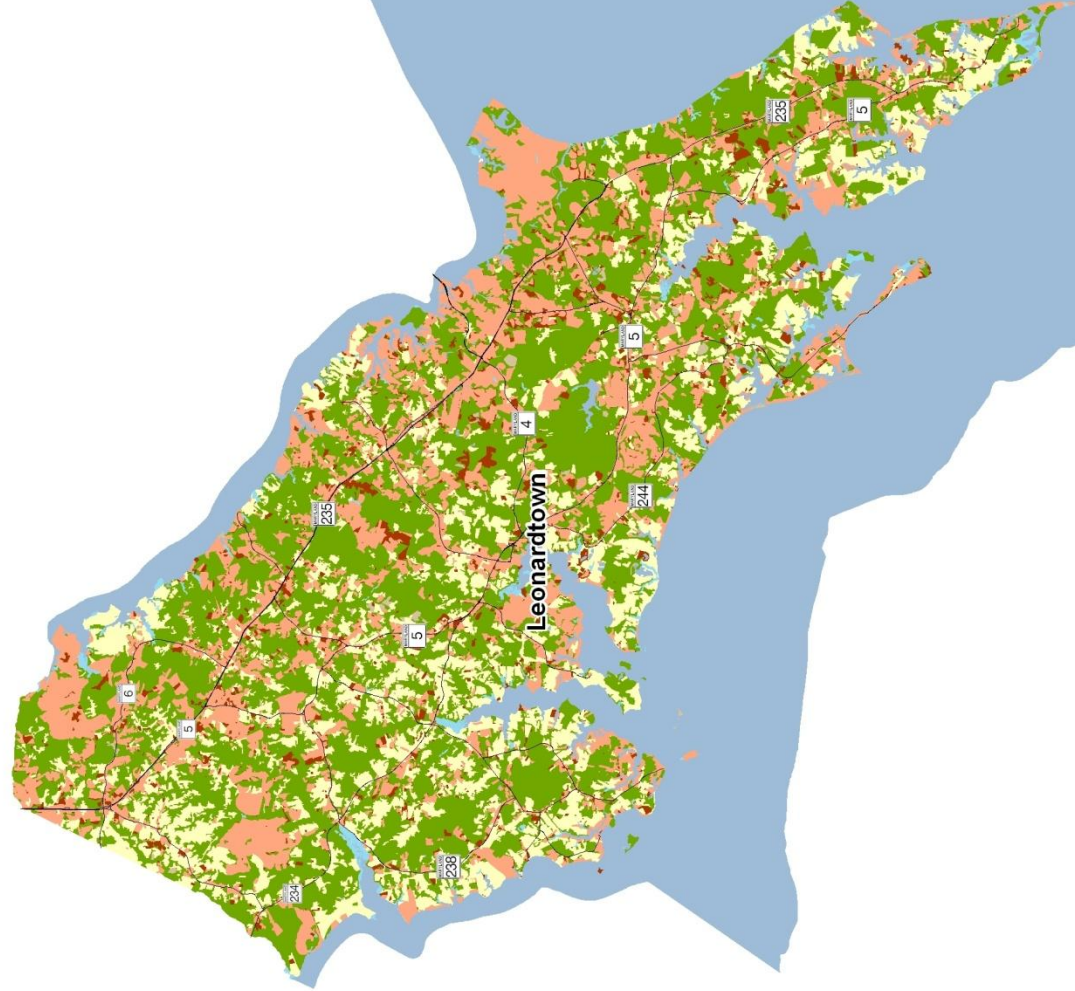


## St Mary's County 2010 Land Use/Land Cover

1) Two new categories have been added to the 2010 Land Use/Land Cover layer update; very low density residential development (191, 192) and transportation (80).  
 2) Updates/modifications to the 2010 land use/land cover layers used the 2007 NAIP aerial imagery and parcel information from Maryland Property View 2008.







## St. Mary's County New Development, 2002-2010

- 1) Updates/modifications to the 2010 land use/land cover layers used the 2007 NAIP aerial imagery and parcel information from Maryland Property View, 2008.
- 2) The original 2002 data were mapped using geo-rectified LANDSAT satellite imagery and 2000 MD Property View. In 2010 two new land use categories were added, transportation and very low density residential, making it necessary to modify the 2002 land use/land cover layer to incorporate these categories for comparative purposes.

