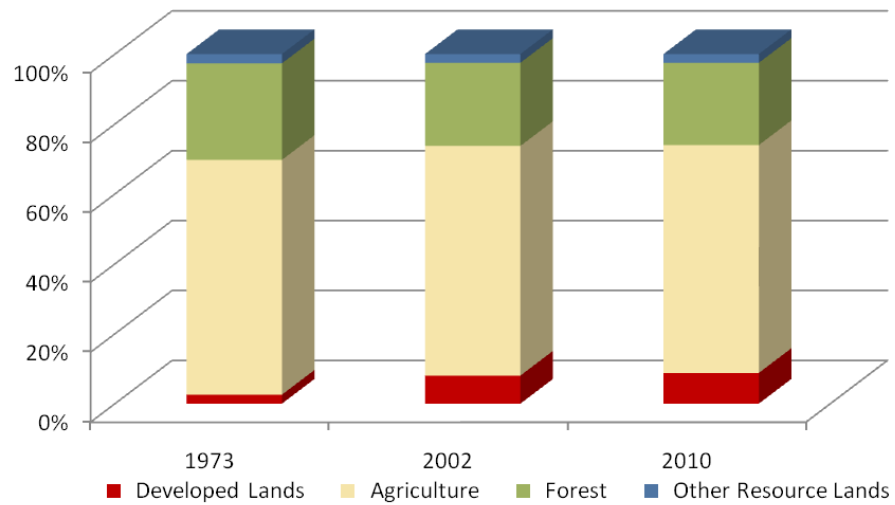


Kent County

	Land Use in Acres		Land Use Change	
	2002 ³ Acres	2010 ² Acres	2002-2010 Acres	Percent
Very Low Density Residential ¹	3,681	4,397	716	19.5%
Low Density Residential	6,096	6,371	275	4.5%
Medium Density Residential	1,987	2,128	141	7.1%
High Density Residential	165	227	62	37.9%
Commercial	887	994	107	12.1%
Industrial	38	38	0	0.0%
Other Developed Lands/ Institutional/Transportation ¹	1,465	1,518	53	3.6%
Total Developed Lands⁵	14,319	15,673	1,354	9.5%
Agriculture	117,228	116,313	-915	-0.8%
Forest	42,460	41,997	-464	-1.1%
Extractive/Barren/Bare	49	49	0	0.0%
Wetland	4,372	4,397	24	0.6%
Total Resource Lands⁵	164,109	162,755	-1,354	-0.8%
Total Land	178,428	178,428		
Water	79,006	79,006		

	Land Use in Acres			Land Use Change
	1973 ⁴	2002 ³	2010 ^{1,2}	1973-2010 Acres
All Residential	3,642	11,929	13,123	9,481
All Non-Residential	954	2,390	2,550	1,595
Total Developed Lands⁵	4,597	14,319	15,673	11,076
Total Resource Lands⁵	174,166	164,109	162,755	-11,411
Total Land	178,763	178,428	178,428	
Water	78,671	79,006	79,006	

Land Use Change 1973 - 2010



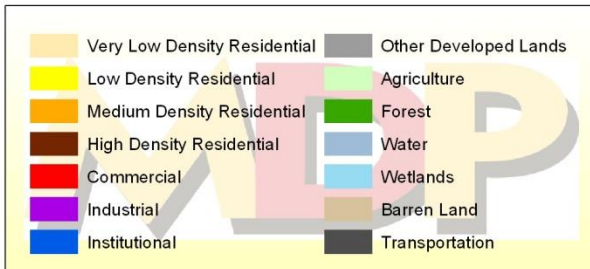
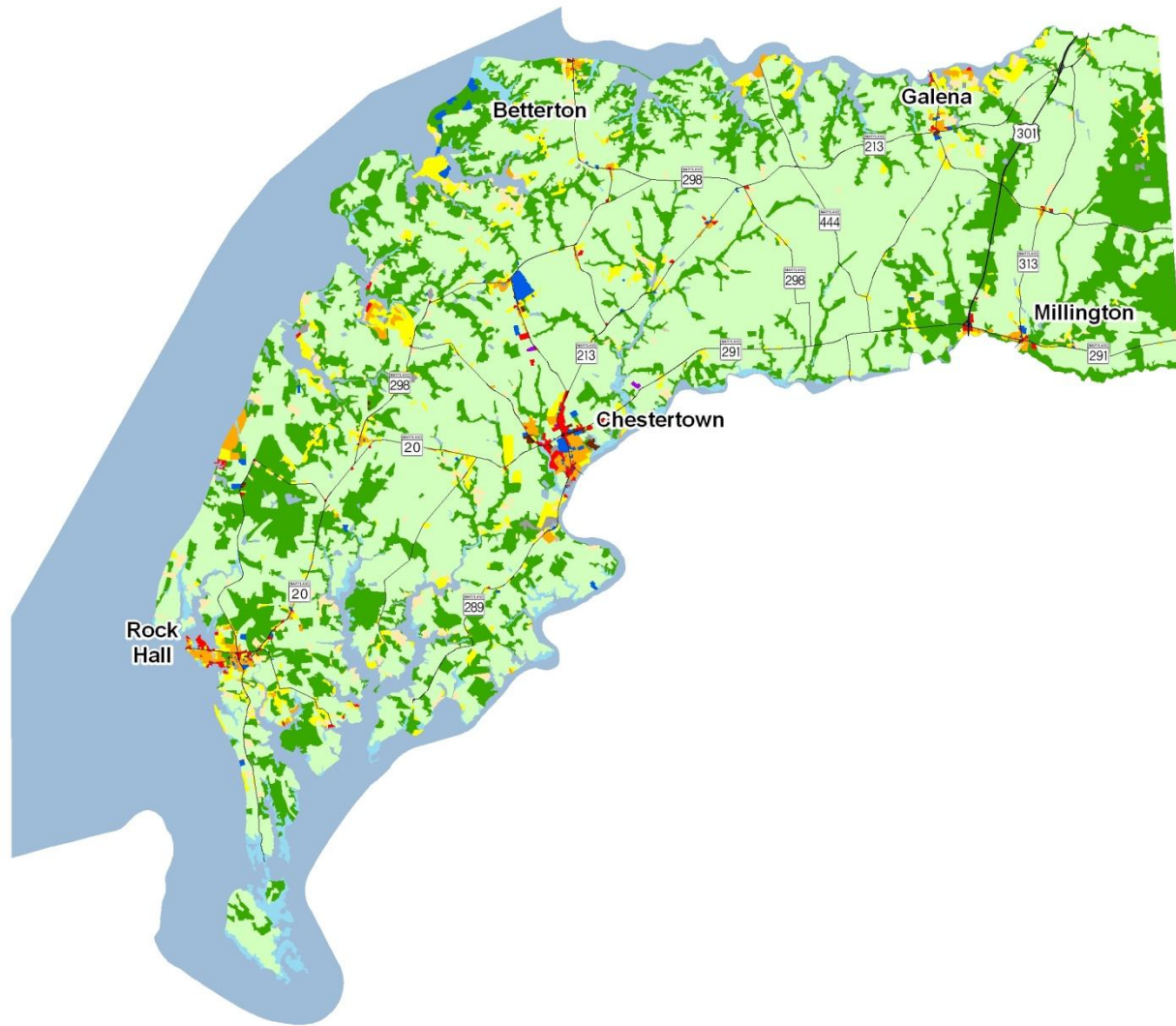
1. Two new categories have been added to the 2010 Land Use/Land Cover layer update; very low density residential development (191,192) and transportation (80).

2. Updates/modifications to the 2010 land use/land cover layers used the 2007 NAIP aerial imagery and parcel information from Maryland Property View 2008.

3. The original 2002 data were mapped using geo-rectified LANDSAT satellite imagery and 2000 MD Property View. In 2010 two new land use categories were added, transportation and very low density residential making it necessary to modify the 2002 land use/land cover layer to incorporate these categories for comparative purposes. Additionally, better imagery and property data information were used to make further modifications. The enhanced 2002 dataset is available upon request.

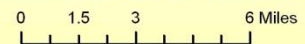
4. Very low density residential was not mapped in 1973, so there is no data associated with changes. Transportation was not mapped in 1973.

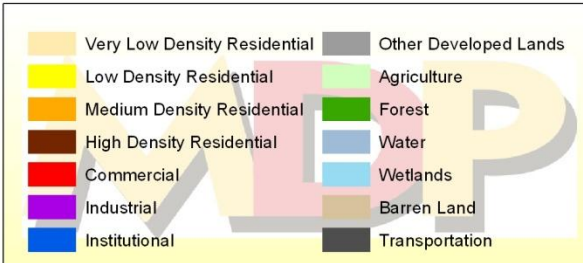
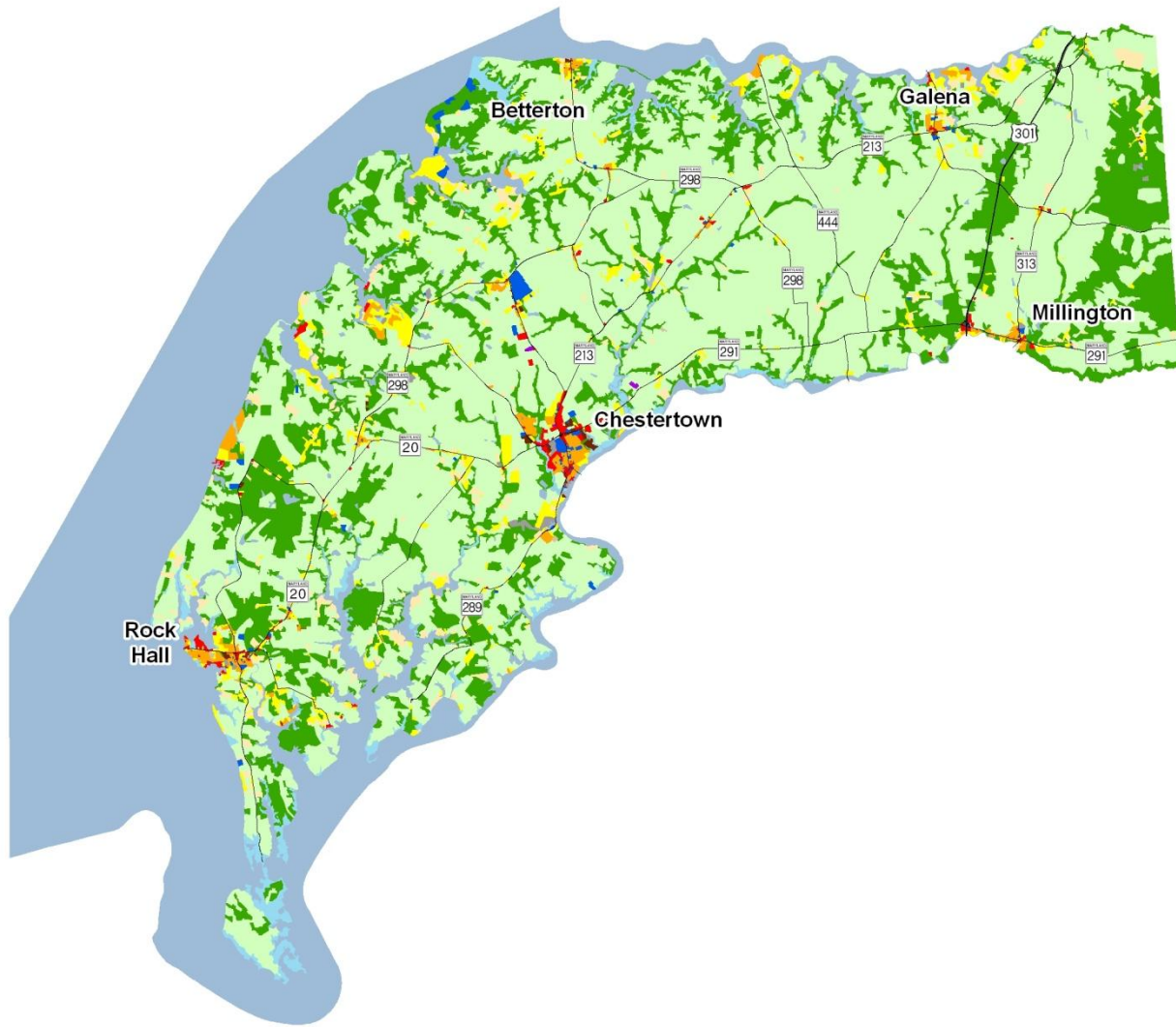
5. As noted above, new land use categories were added in 2010 and associated adjustments were made to 2002 data. Similar adjustments were not made to 1973 data, making it impossible to know how much change from 1973 is due to new development since then, versus misclassified land uses at that time. For these reasons, we suggest reliance only on change statistics for the aggregate land use categories, Total Developed and Total Resource Lands



Kent County 2002 Land Use/Land Cover

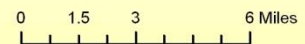
1) The original 2002 data were mapped using geo-rectified LANDSAT satellite imagery and 2000 MD Property View. In 2010 two new land use categories were added, transportation and very low density residential making it necessary to modify the 2002 land use/land cover layer to incorporate these categories for comparative purposes. Additionally, better imagery and property data information were used to make further modifications. The enhanced 2002 dataset is available upon request.

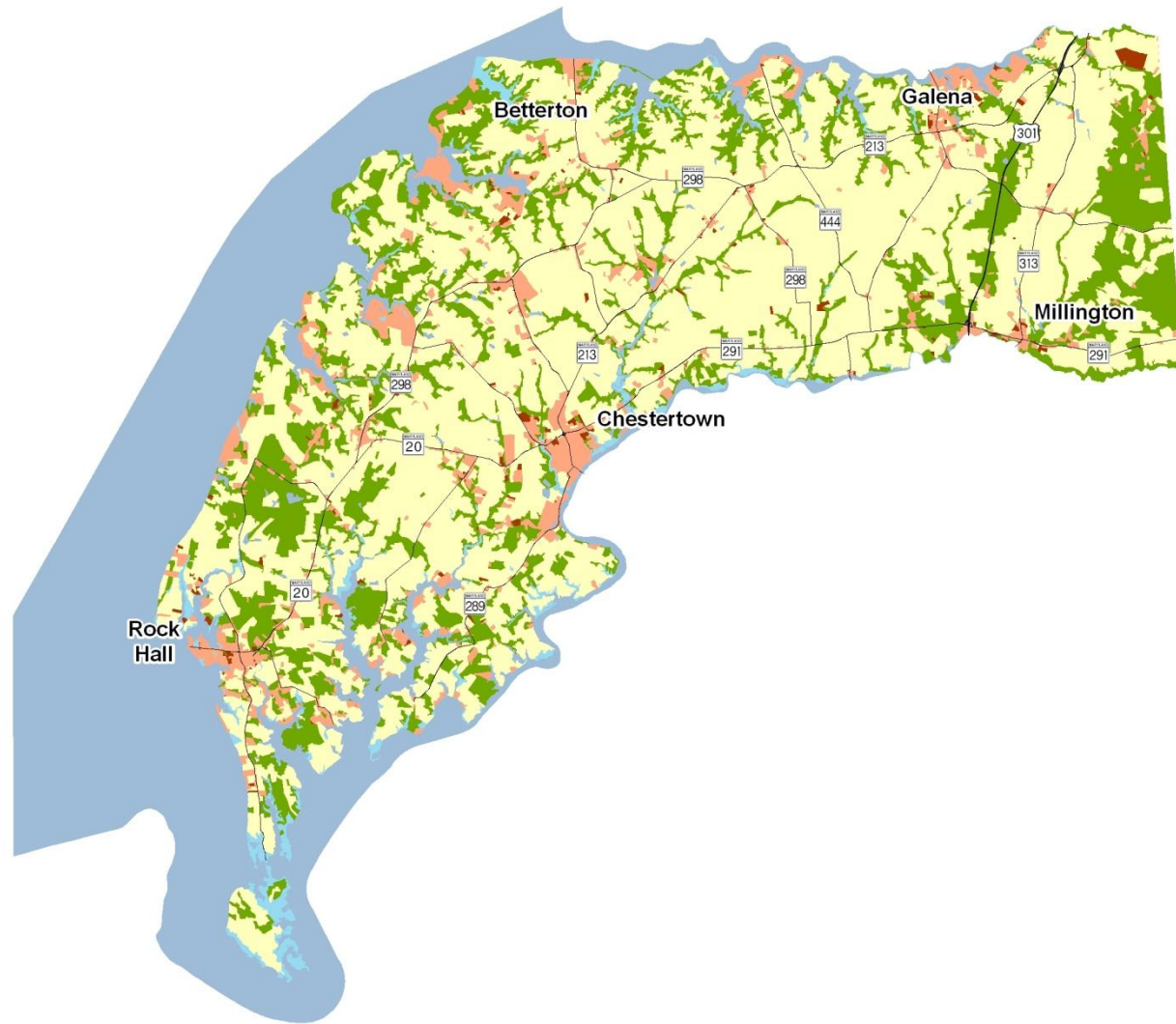




Kent County 2010 Land Use/Land Cover

1) Two new categories have been added to the 2010 Land Use/Land Cover layer update; very low density residential development (191, 192) and transportation (80).
 2) Updates/modifications to the 2010 land use/land cover layers used the 2007 NAIP aerial imagery and parcel information from Maryland Property View 2008.





Kent County New Development, 2002-2010

1) Updates/modifications to the 2010 land use/land cover layers used the 2007 NAIP aerial imagery and parcel information from Maryland Property View 2008.
 2) The original 2002 data were mapped using geo-rectified LANDSAT satellite imagery and 2000 MD Property View. In 2010 two new land use categories were added, transportation and very low density residential, making it necessary to modify the 2002 land use/land cover layer to incorporate these categories for comparative purposes.

