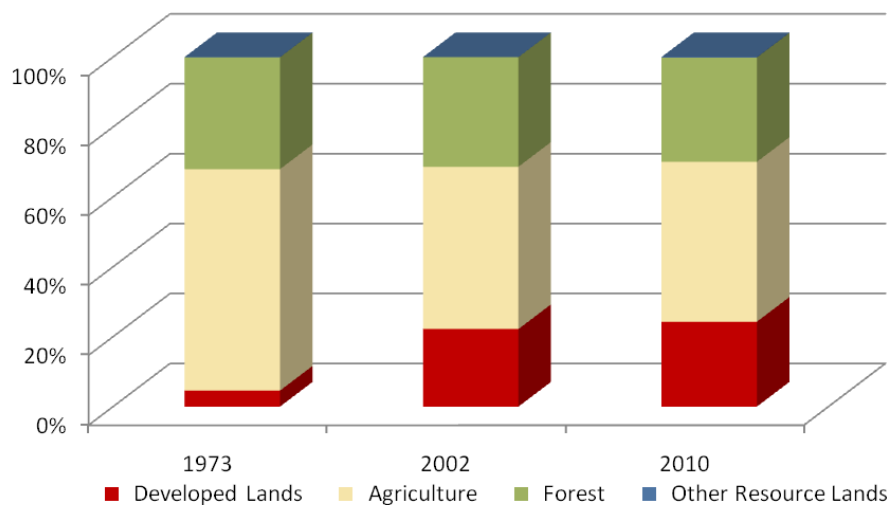


Frederick County

	Land Use in Acres		Land Use Change	
	2002 ³ Acres	2010 ² Acres	2002-2010 Acres	Percent
Very Low Density Residential ¹	25,067	27,399	2,332	9.3%
Low Density Residential	36,582	38,986	2,404	6.6%
Medium Density Residential	10,480	11,703	1,223	11.7%
High Density Residential	2,898	3,327	429	14.8%
Commercial	5,298	6,277	980	18.5%
Industrial	2,592	2,720	129	5.0%
Other Developed Lands/ Institutional/Transportation ¹	11,119	12,491	1,372	12.3%
Total Developed Lands⁵	94,035	102,904	8,869	9.4%
Agriculture	196,853	193,881	-2,972	-1.5%
Forest	132,837	126,464	-6,372	-4.8%
Extractive/Barren/Bare	101	576	475	470.9%
Wetland	32	32	0	0.0%
Total Resource Lands⁵	329,823	320,954	-8,869	-2.7%
Total Land	423,857	423,857		
Water	3,245	3,245		

	Land Use in Acres			Land Use Change
	1973 ⁴	2002 ³	2010 ^{1,2}	1973-2010 Acres
All Residential	12,766	75,027	81,416	68,649
All Non-Residential	6,670	19,008	21,488	14,818
Total Developed Lands⁵	19,436	94,035	102,904	83,468
Total Resource Lands⁵	405,476	329,823	320,954	-84,522
Total Land	424,912	423,857	423,857	
Water	2,191	3,245	3,245	

Land Use Change 1973 - 2010



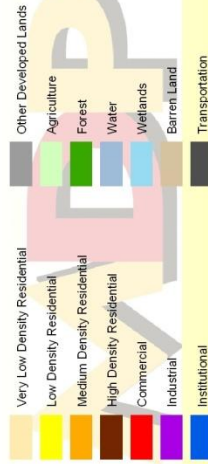
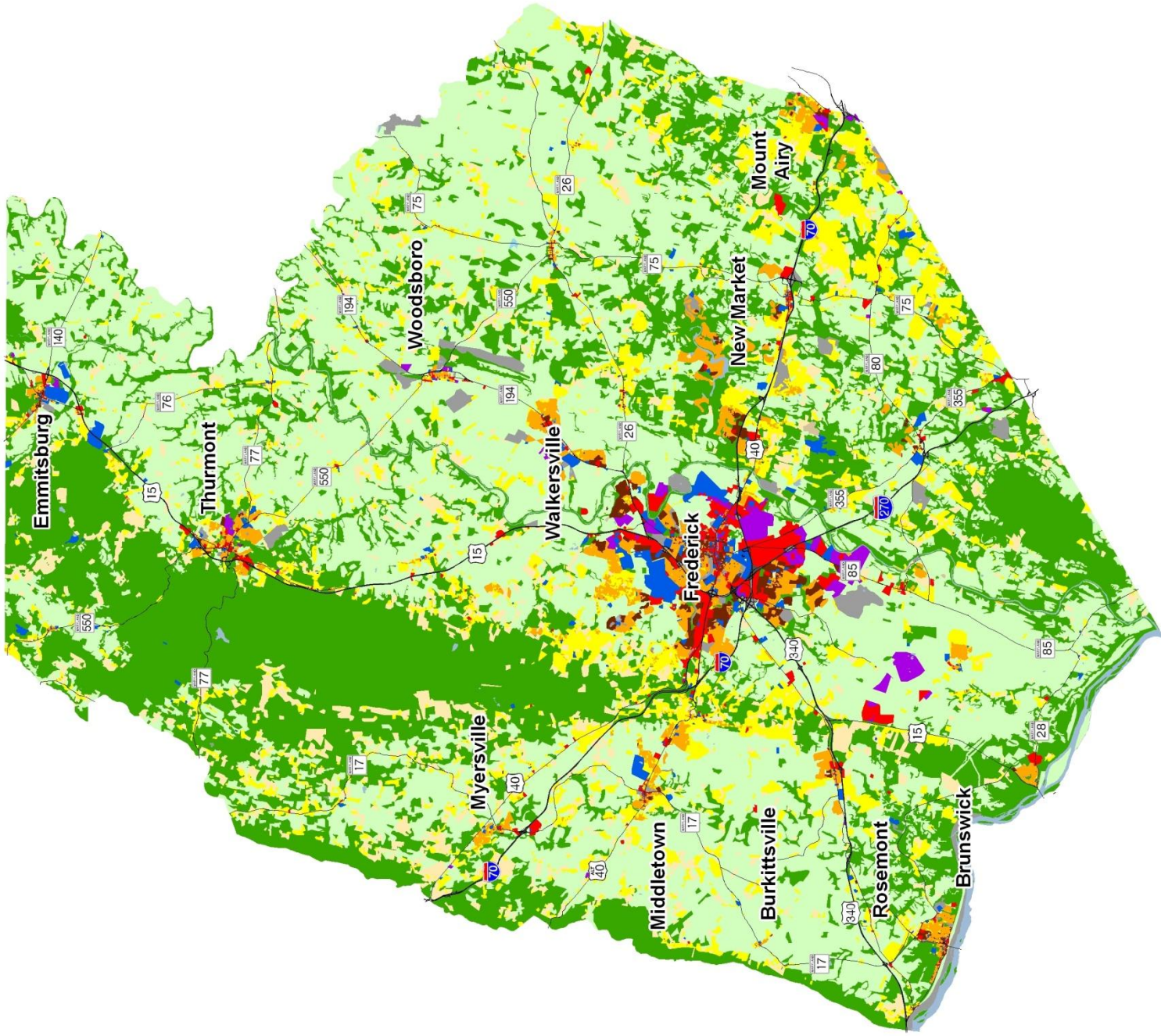
1. Two new categories have been added to the 2010 Land Use/Land Cover layer update; very low density residential development (191,192) and transportation (80).

2. Updates/modifications to the 2010 land use/land cover layers used the 2007 NAIP aerial imagery and parcel information from Maryland Property View 2008.

3. The original 2002 data were mapped using geo-rectified LANDSAT satellite imagery and 2000 MD Property View. In 2010 two new land use categories were added, transportation and very low density residential making it necessary to modify the 2002 land use/land cover layer to incorporate these categories for comparative purposes. Additionally, better imagery and property data information were used to make further modifications. The enhanced 2002 dataset is available upon request.

4. Very low density residential was not mapped in 1973, so there is no data associated with changes. Transportation was not mapped in 1973.

5. As noted above, new land use categories were added in 2010 and associated adjustments were made to 2002 data. Similar adjustments were not made to 1973 data, making it impossible to know how much change from 1973 is due to new development since then, versus misclassified land uses at that time. For these reasons, we suggest reliance only on change statistics for the aggregate land use categories, Total Developed and Total Resource Lands

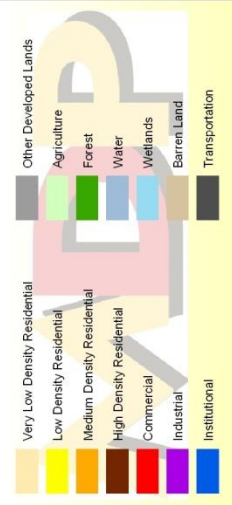
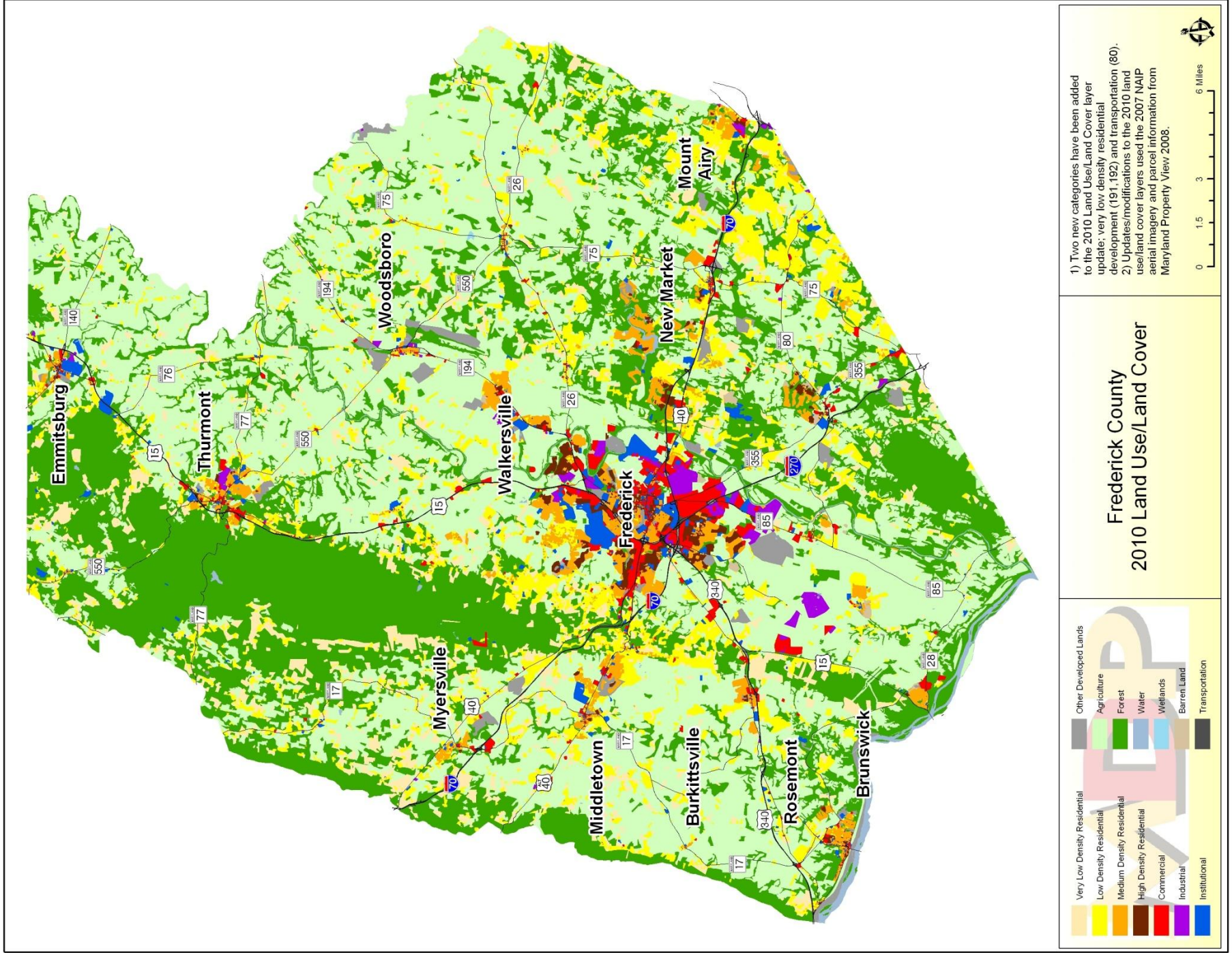


Frederick County 2002 Land Use/Land Cover

1) The original 2002 data were mapped using geo-rectified LANDSAT satellite imagery and 2000 MD Property View. In 2010 two new land use categories were added, transportation and very low density residential making it necessary to modify the 2002 land use/land cover layer to incorporate these categories for comparative purposes. Additionally, better imagery and property data information were used to make further modifications. The enhanced 2002 dataset is available upon request.

6 Miles

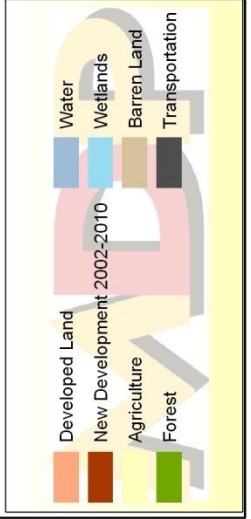
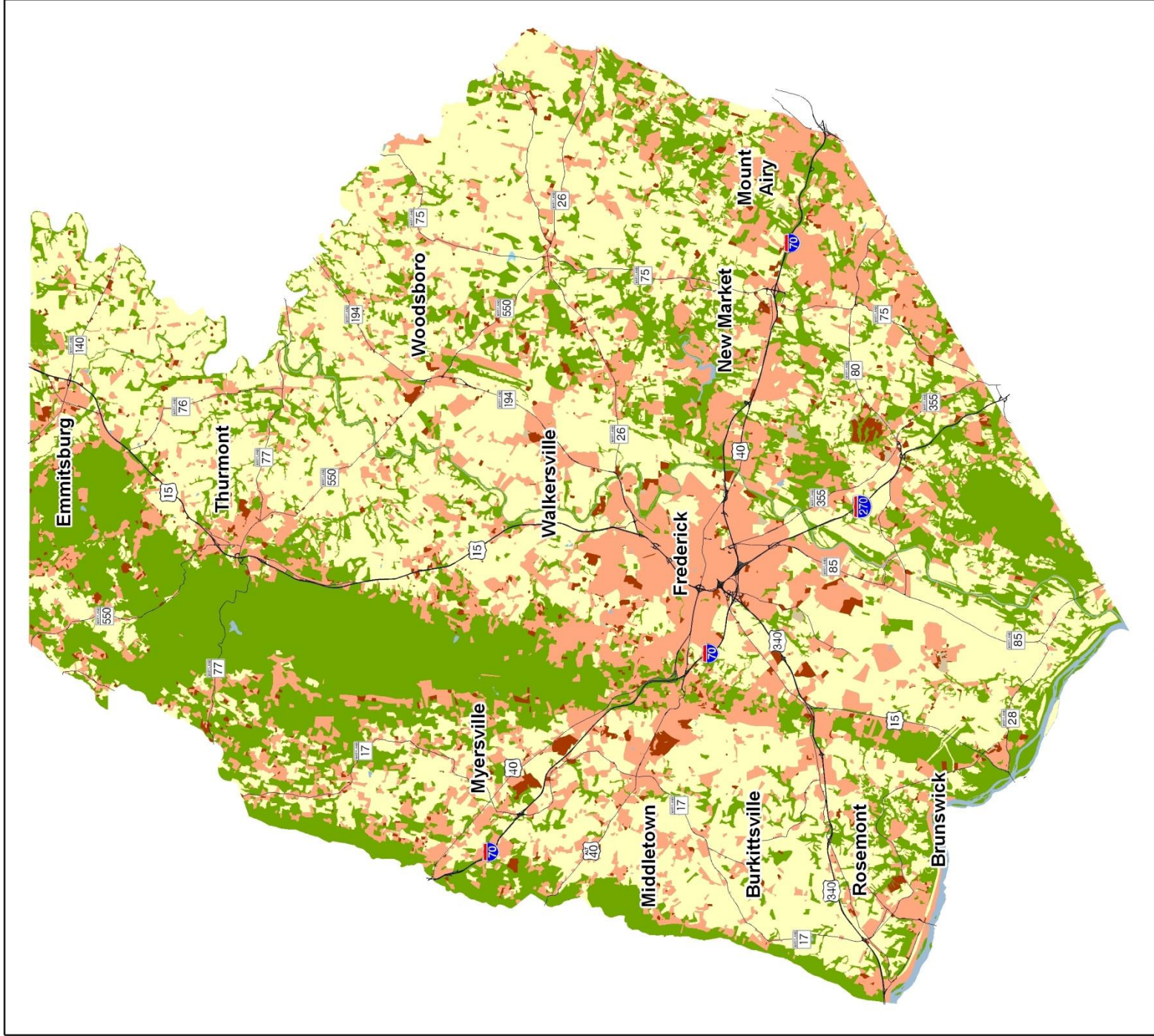




Frederick County 2010 Land Use/Land Cover

- 1) Two new categories have been added to the 2010 Land Use/Land Cover layer update; very low density residential development (191, 192) and transportation (80).
- 2) Updates/modifications to the 2010 land use/land cover layers used the 2007 NAIP aerial imagery and parcel information from Maryland Property View 2008.





Frederick County New Development, 2002-2010

1) Updates/modifications to the 2010 land use/land cover layers used the 2007 NAIP aerial imagery and parcel information from Maryland Property View 2008.
 2) The original 2002 data were mapped using geo-rectified LANDSAT satellite imagery and 2000 MD Property View. In 2010 two new land use categories were added, transportation and very low density residential, making it necessary to modify the 2002 land use/land cover layer to incorporate these categories for comparative purposes.

