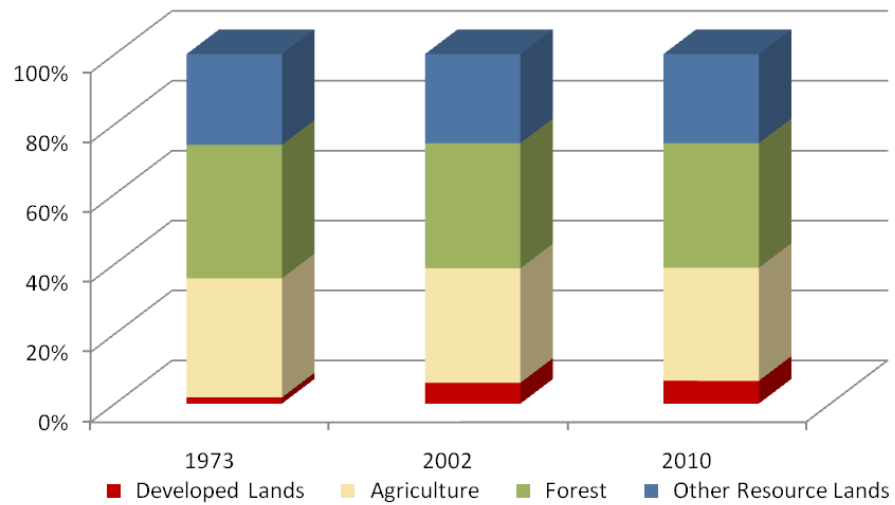


Dorchester County

	Land Use in Acres		Land Use Change	
	2002 ³ Acres	2010 ² Acres	2002-2010 Acres	Percent
Very Low Density Residential ¹	5,750	6,233	483	8.4%
Low Density Residential	8,956	9,975	1,019	11.4%
Medium Density Residential	1,755	1,904	149	8.5%
High Density Residential	411	431	20	4.8%
Commercial	1,172	1,244	71	6.1%
Industrial	944	993	49	5.2%
Other Developed Lands/ Institutional/Transportation ¹	2,141	2,375	234	10.9%
Total Developed Lands⁵	21,129	23,154	2,025	9.6%
Agriculture	116,426	114,886	-1,540	-1.3%
Forest	127,209	126,705	-504	-0.4%
Extractive/Barren/Bare	151	228	77	51.2%
Wetland	90,325	90,267	-58	-0.1%
Total Resource Lands⁵	334,111	332,086	-2,025	-0.6%
Total Land	355,240	355,240		
Water	258,790	258,790		

	Land Use in Acres			Land Use Change
	1973 ⁴	2002 ³	2010 ^{1,2}	1973-2010 Acres
All Residential	4,076	16,871	18,542	14,466
All Non-Residential	2,215	4,258	4,612	2,397
Total Developed Lands⁵	6,291	21,129	23,154	16,863
Total Resource Lands⁵	349,069	334,111	332,086	-16,983
Total Land	355,360	355,240	355,240	
Water	258,670	258,790	258,790	

Land Use Change 1973 - 2010



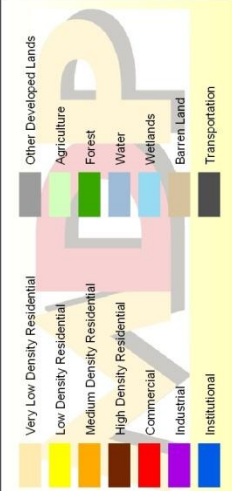
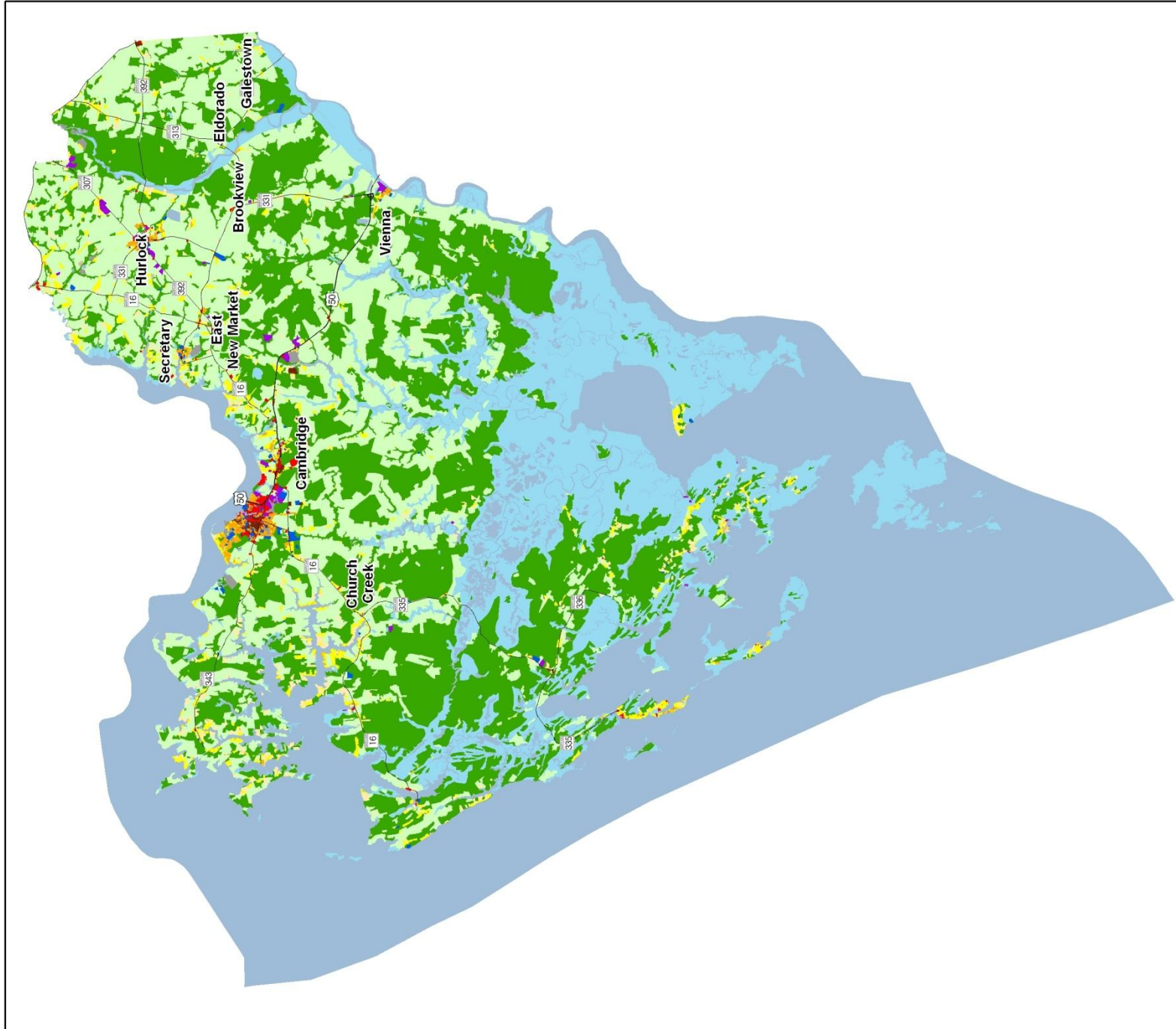
1. Two new categories have been added to the 2010 Land Use/Land Cover layer update; very low density residential development (191,192) and transportation (80).

2. Updates/modifications to the 2010 land use/land cover layers used the 2007 NAIP aerial imagery and parcel information from Maryland Property View 2008.

3. The original 2002 data were mapped using geo-rectified LANDSAT satellite imagery and 2000 MD Property View. In 2010 two new land use categories were added, transportation and very low density residential making it necessary to modify the 2002 land use/land cover layer to incorporate these categories for comparative purposes. Additionally, better imagery and property data information were used to make further modifications. The enhanced 2002 dataset is available upon request.

4. Very low density residential was not mapped in 1973, so there is no data associated with changes. Transportation was not mapped in 1973.

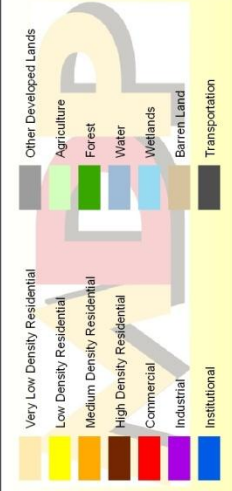
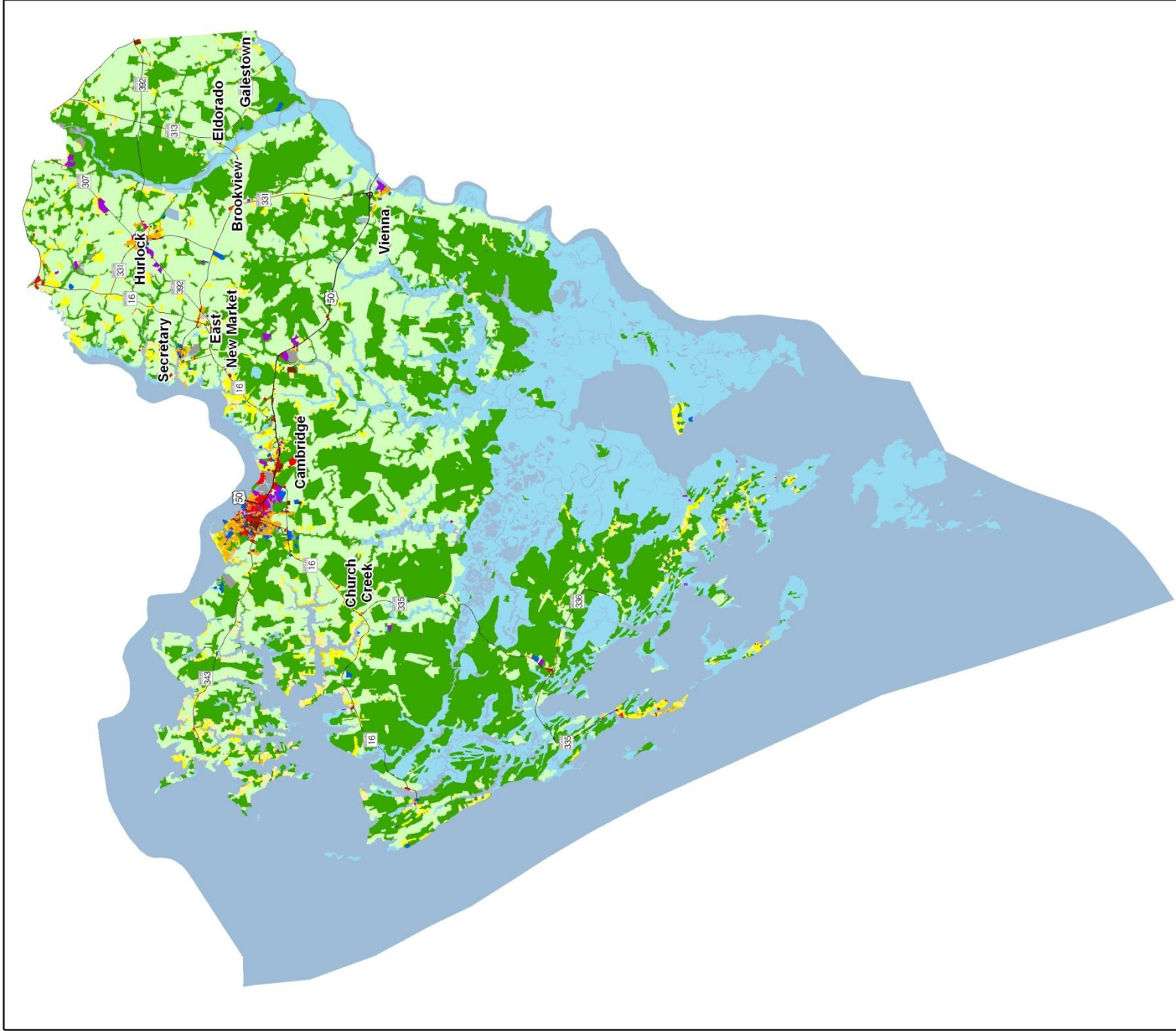
5. As noted above, new land use categories were added in 2010 and associated adjustments were made to 2002 data. Similar adjustments were not made to 1973 data, making it impossible to know how much change from 1973 is due to new development since then, versus misclassified land uses at that time. For these reasons, we suggest reliance only on change statistics for the aggregate land use categories, Total Developed and Total Resource Lands



Dorchester County 2002 Land Use/Land Cover

1) The original 2002 data were mapped using geo-rectified LANDSAT satellite imagery and 2000 MD PropertyView. In 2010 two new land use categories were added, transportation and very low density residential making it necessary to modify the 2002 land use/land cover layer to incorporate these categories for comparative purposes. Additionally, better imagery and property data information were used to make further modifications. The enhanced 2002 dataset is available upon request.

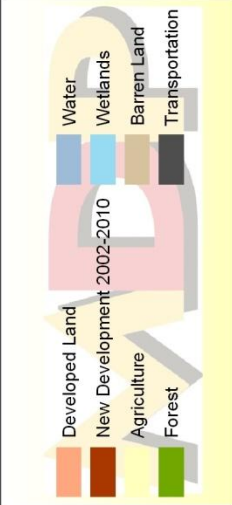
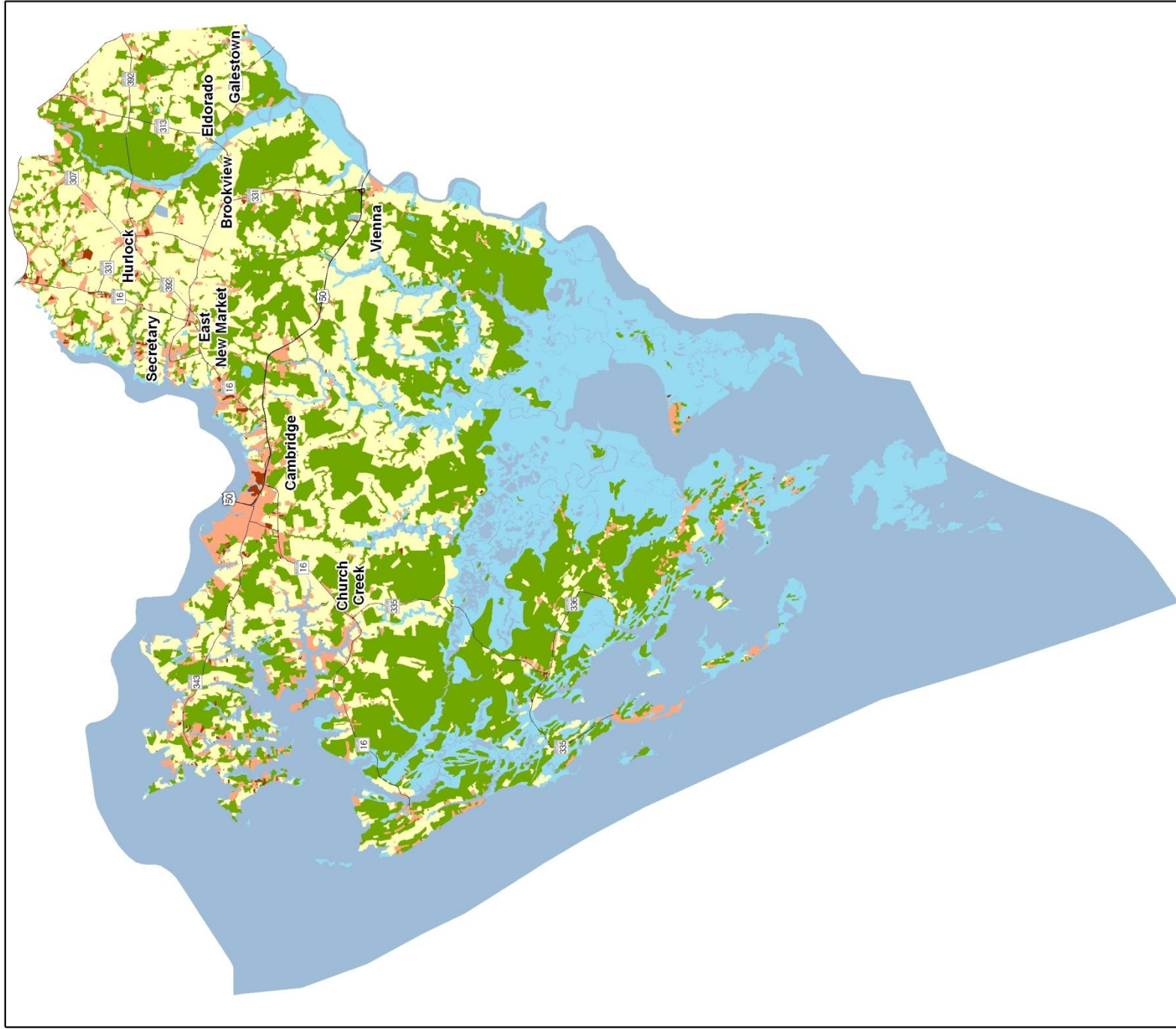




Dorchester County 2010 Land Use/Land Cover

1) Two new categories have been added to the 2010 Land Use/Land Cover layer update: very low density residential development (191, 192) and transportation (80).
 2) Updates/modifications to the 2010 land use/land cover layers used the 2007 NAIP aerial imagery and parcel information from Maryland Property View 2008.





Dorchester County New Development, 2002-2010

1) Updates/modifications to the 2010 land use/land cover layers used the 2007 NAIP aerial imagery and parcel information from Maryland Property View 2008.

2) The original 2002 data were mapped using geo-rectified LANDSAT satellite imagery and 2000 MD Property View. In 2010 two new land use categories were added, transportation and very low density residential, making it necessary to modify the 2002 land use/land cover layer to incorporate these categories for comparative purposes.

