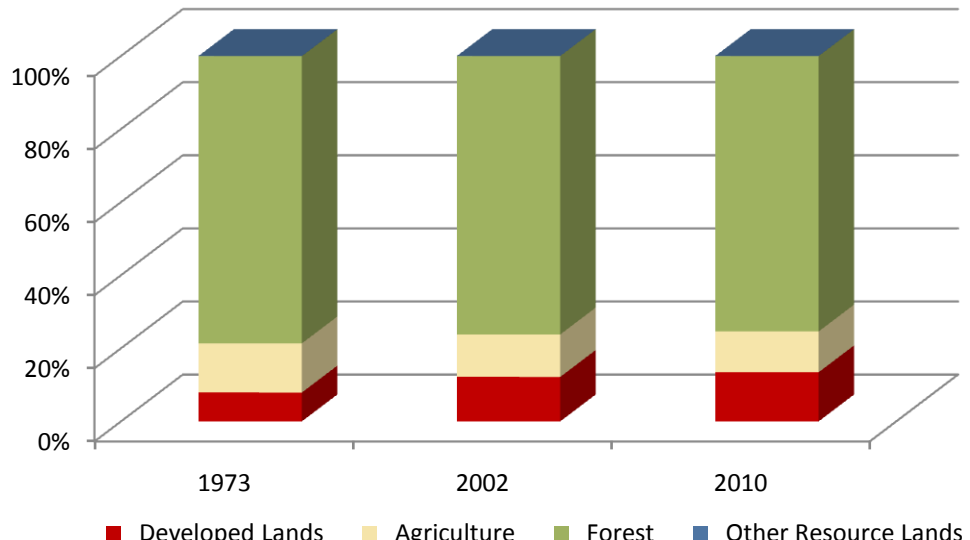


Allegany County

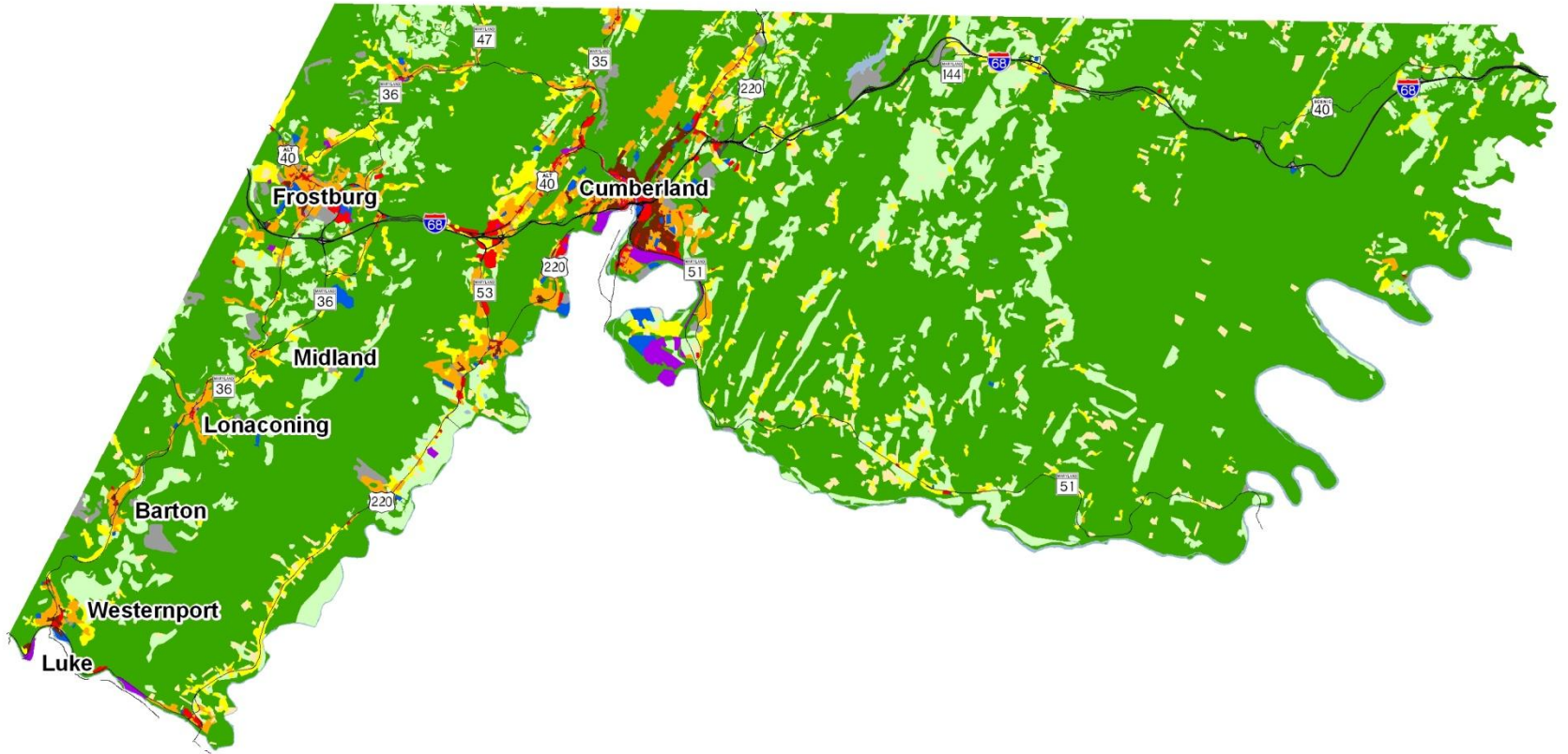
	Land Use in Acres		Land Use Change	
	2002 ³ Acres	2010 ² Acres	2002-2010 Acres	Percent
Very Low Density Residential ¹	6,320	6,880	560	8.9%
Low Density Residential	9,387	10,693	1,307	13.9%
Medium Density Residential	7,308	7,572	264	3.6%
High Density Residential	1,291	1,309	18	1.4%
Commercial	1,998	2,158	160	8.0%
Industrial	1,097	1,119	22	2.0%
Other Developed Lands/ Institutional/Transportation ¹	5,067	6,122	1,055	20.8%
Total Developed Lands⁵	32,468	35,854	3,386	10.4%
Agriculture	31,002	29,791	-1,211	-3.9%
Forest	203,269	201,053	-2,216	-1.1%
Extractive/Barren/Bare	16	57	41	253.2%
Wetland	29	29	0	0.0%
Total Resource Lands⁵	234,316	230,930	-3,386	-1.4%
Total Land	266,784	266,784		
Water	2,725	2,725		

	Land Use in Acres			Land Use Change
	1973 ⁴	2002 ³	2010 ^{1,2}	1973-2010 Acres
All Residential	12,876	24,306	26,455	13,579
All Non-Residential	8,183	8,162	9,398	1,215
Total Developed Lands⁵	21,059	32,468	35,854	14,794
Total Resource Lands⁵	245,630	234,316	230,930	-14,700
Total Land	266,689	266,784	266,784	
Water	2,820	2,725	2,725	

Land Use Change 1973 - 2010

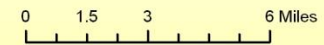


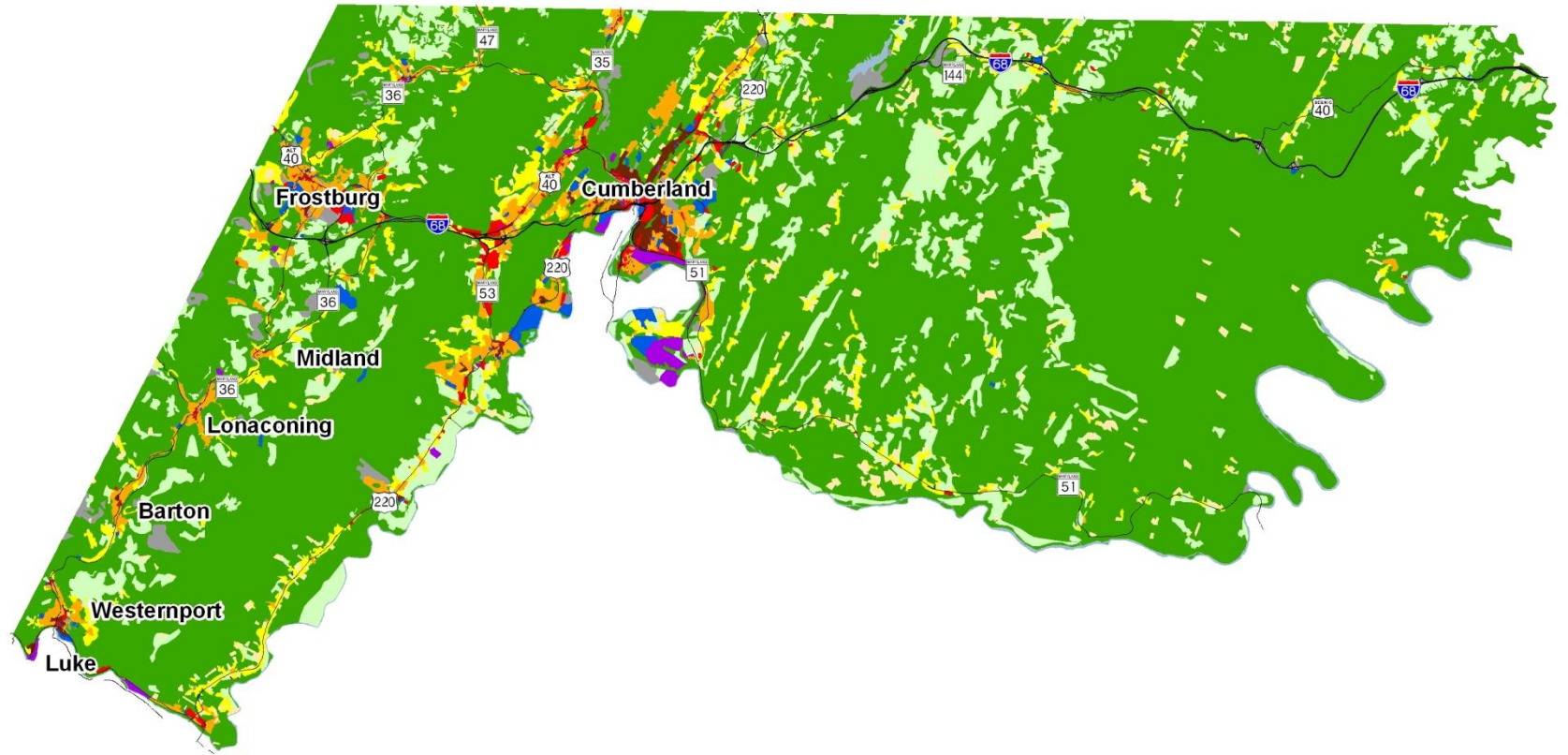
- Two new categories have been added to the 2010 Land Use/Land Cover layer update; very low density residential development (191,192) and transportation (80).
- Updates/modifications to the 2010 land use/land cover layers used the 2007 NAIP aerial imagery and parcel information from Maryland Property View 2008.
- The original 2002 data were mapped using geo-rectified LANDSAT satellite imagery and 2000 MD Property View. In 2010 two new land use categories were added, transportation and very low density residential making it necessary to modify the 2002 land use/land cover layer to incorporate these categories for comparative purposes. Additionally, better imagery and property data information were used to make further modifications. The enhanced 2002 dataset is available upon request.
- Very low density residential was not mapped in 1973, so there is no data associated with changes. Transportation was not mapped in 1973.
- As noted above, new land use categories were added in 2010 and associated adjustments were made to 2002 data. Similar adjustments were not made to 1973 data, making it impossible to know how much change from 1973 is due to new development since then, versus misclassified land uses at that time. For these reasons, we suggest reliance only on change statistics for the aggregate land use categories, Total Developed and Total Resource Lands



Allegany County 2002 Land Use/Land Cover

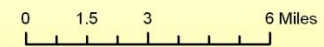
1) The original 2002 data were mapped using geo-rectified LANDSAT satellite imagery and 2000 MD Property View. In 2010 two new land use categories were added, transportation and very low density residential making it necessary to modify the 2002 land use/land cover layer to incorporate these categories for comparative purposes. Additionally, better imagery and property data information were used to make further modifications. The enhanced 2002 dataset is available upon request.

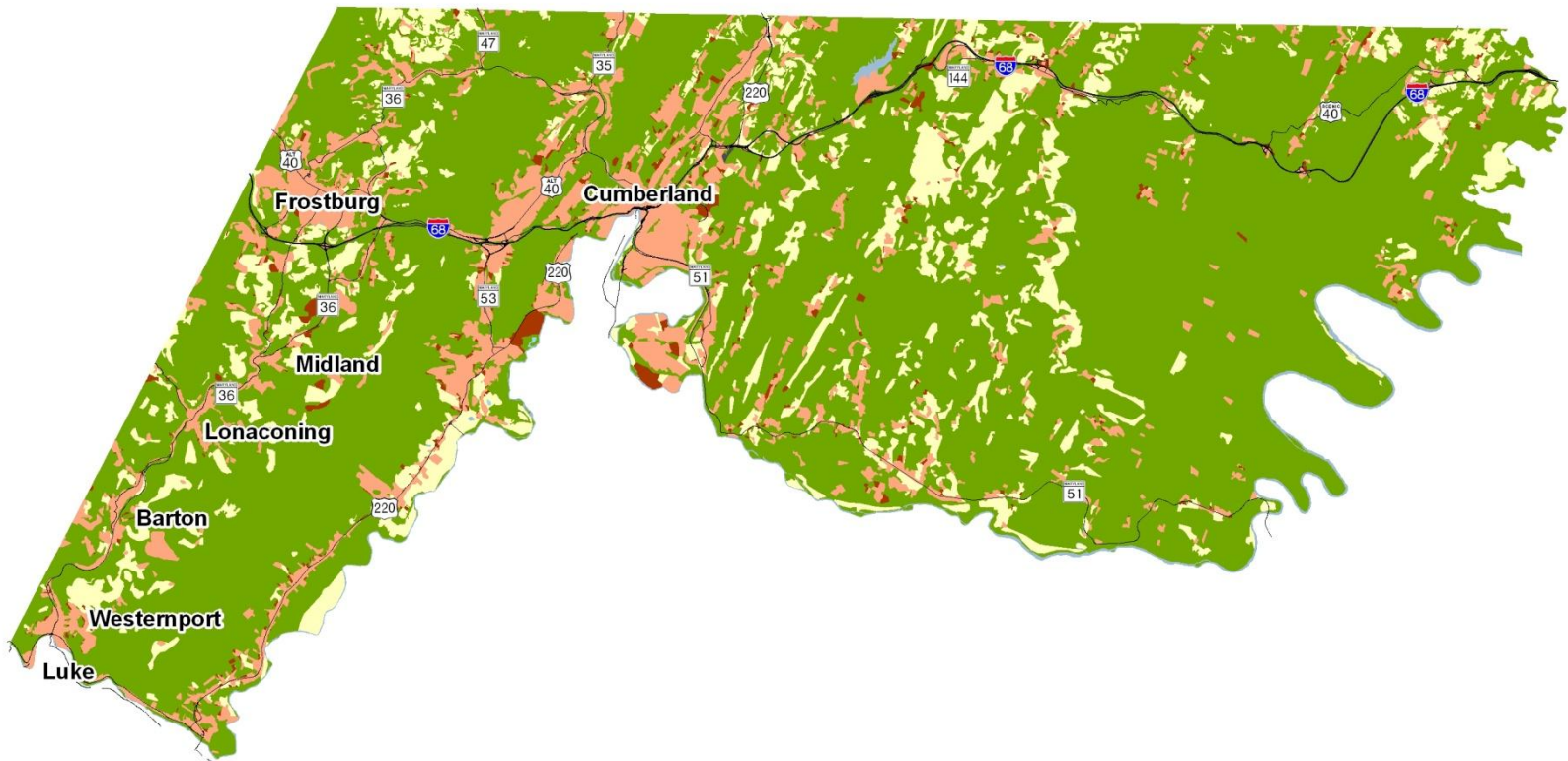




Allegany County 2010 Land Use/Land Cover

1) Two new categories have been added to the 2010 Land Use/Land Cover layer update; very low density residential development (191,192) and transportation (80).
 2) Updates/modifications to the 2010 land use/land cover layers used the 2007 NAIP aerial imagery and parcel information from Maryland Property View 2008.





Allegany County New Development, 2002-2010

1) Two new categories have been added to the 2010 Land Use/Land Cover layer update; very low density residential development (191,192) and transportation (80).
 2) Updates/modifications to the 2010 land use/land cover layers used the 2007 NAIP aerial imagery and parcel information from Maryland Property View 2008.

