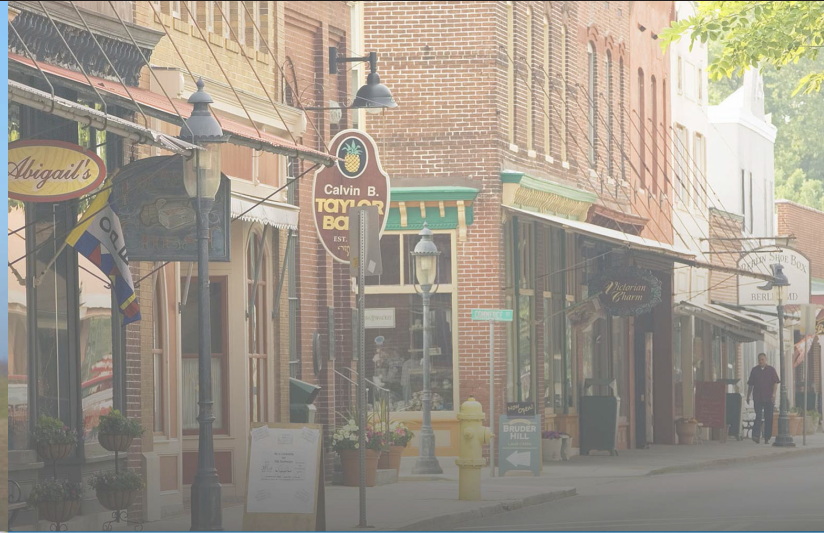




Maryland

DEPARTMENT OF PLANNING



2019 Annual Report

Supporting Communities, Preserving Resources,
Enriching Lives...Changing Maryland for the Better



A Message from Governor Larry Hogan

I am pleased to present the Fiscal Year (FY) 2019 Annual Report for the Maryland Department of Planning (Planning). Under our administration, Planning continued working to change Maryland for the better through support for communities, responsible growth, and resource conservation. We remain focused and dedicated to creating jobs, helping Maryland families thrive, and restoring our state's economy, guided by simple, common sense principles.

In summer 2017, I signed an executive order directing Planning to prepare a revised state development plan through coordination and collaboration with the Smart Growth Subcabinet, the Maryland Sustainable Growth Commission, local governments, and other stakeholders. This plan was delivered on July 1, 2019. I invite you to learn more about A Better Maryland at abetter.maryland.gov.



Additionally, in February 2019, I signed an executive order kicking off Census 2020 by creating the Maryland Complete Count Committee. This diverse group is assisting Planning in the administration of a Census outreach strategy to encourage Maryland's population to fully participate in the 2020 federal decennial Census. A complete and accurate count of Maryland's population is essential to our state as it determines Congressional representation, state redistricting, and federal funding allocations for the next ten years.

The FY19 Annual Report demonstrates our commitment to providing excellent customer service and assistance to local partners, while recognizing the unique nature of each region in our state that supports economic development and the preservation of Maryland's natural resources.

Our administration is working diligently to ensure that Maryland remains a vibrant place to live, work, and raise a family. We have accomplished a great deal, and I am confident that together, we will accomplish much more.

Sincerely,

A handwritten signature in black ink that reads "Larry Hogan". The signature is fluid and cursive.

Larry Hogan
Governor



A Message from the Secretary



Planning's annual report for Fiscal Year 2019 highlights our activities and accomplishments in service to the state as we worked to advance the priorities of the Hogan Administration. We are focused on supporting communities, preserving resources, and enriching lives as part of an overall effort to change Maryland for the better.

It is our mission at Planning to collaborate with state agencies, local governments, and the public by providing technical assistance and data that enables each community to shape its future in a way that reflects local values, honors its heritage, and presents opportunities for all of Maryland to flourish.

In FY19, we completed work on a new state development plan as directed by Governor Hogan. Known as A Better Maryland, the document and accompanying website (abetter.maryand.gov) is the culmination of two years of outreach, engagement, partnerships, and collaboration. Development of the plan involved extensive coordination, including more than 90 meetings with local government officials, planning, and economic development staff and the public, an online survey, as well as consultation with the numerous committees and state agencies. The plan supports collaboration among state and local governments and other stakeholders, providing resources and tools for the long-term economic success of Maryland. We are looking forward to building out the digital resource center and implementing many of the strategies that are contained in the plan.

Planning has been preparing for the federal decennial 2020 Census for the past several years. The State Data Center, working with the U.S. Census Bureau, was able to identify 130,000 addresses that were either missed or misaligned. That has the potential for increasing the final count and presents the opportunity for Maryland to receive a larger share of the \$6.75 Billion in federal funding made available based on Census data. We are gearing up to improve response rates throughout the state.

A full and accurate count of every Maryland resident is critical to ensuring all of our families and communities can thrive. Counting everyone ensures Maryland will have the resources, and representation in communities that accurately reflect our diverse population, from Oakland to Ocean City.

Together, we are changing Maryland for the better. Planning stands ready to assist, bringing our full portfolio of professional staff, data resources, and programmatic assistance across the state. We are helping each area of our state plan for a prosperous future, while preserving the natural, historical, and cultural resources that make Maryland our home.

Sincerely,

A handwritten signature in black ink, appearing to read "Robert S. McCord". The signature is fluid and cursive, with a large, sweeping initial "R".

Robert S. McCord
Secretary



Table of Contents

Introduction	2
Operations	4
Planning Services	5
Planning Coordination	5
Interagency Coordination and Subcabinet Support	16
Planning Data and Research	19
The 2020 Census and Support of the State Governor's Complete Count Committee (CCC)	26
Maryland Historical Trust	29
Office of Planning, Education and Outreach	29
Office of Research, Survey and Registration	31
Office of Preservation Services	33
Jefferson Patterson Park and Museum	35



Introduction

The Maryland Department of Planning (Planning) serves the state by providing technical assistance, program guidance, data analysis, and outreach to local governments. We assist state agency partners, and provide timely data to the private sector and the general public. Our work reflects the priorities and direction of the Hogan administration, including a focus on efficiency while emphasizing flexibility, and collaboration with local jurisdictions to promote economic development and preserve our environment.

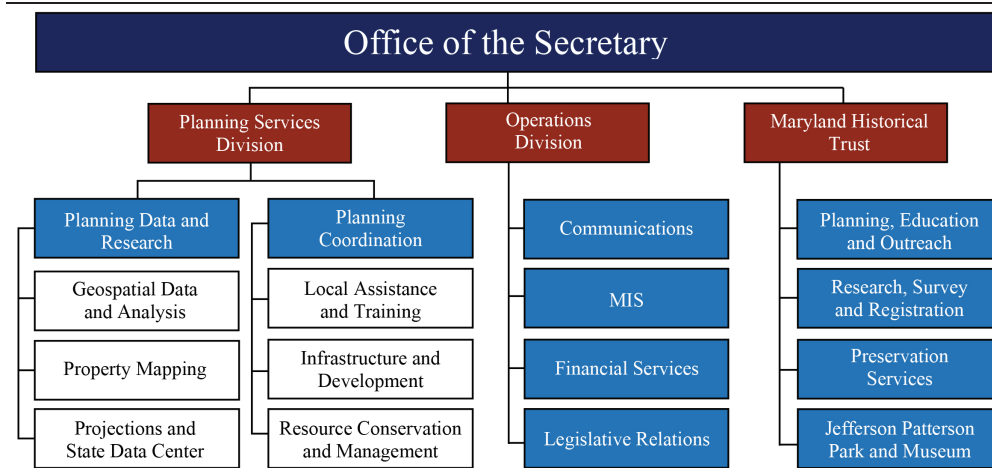
Planning, serves the state and local jurisdictions with 130 employees, and is organized into three divisions: Operations, Planning Services, and the Maryland Historical Trust.

Operations is responsible for the administrative support for the department, including financial, information technology, procurement, logistics, and legislative relations. The communications section coordinates outreach to promote the department's initiatives and services in order to develop and strengthen relationships, as well as support the administration's legislative and policy initiatives.

Through Planning Services, Planning typically completes more than 200 technical assistance projects for counties and municipalities every year. The department provides support in reviewing or drafting dozens of comprehensive plans or ordinances for local governments. We also collect, analyze, and publish social, economic, and geographic information, and maintain the digital maps of the state's 2.3 million parcels. These maps form the foundation for the development of policies and are used throughout the state by various agencies, decision makers, and stakeholders. Planning also ensures that proposed financial and nonfinancial assistance projects within Maryland are consistent with state and local laws, regulations, and guidelines.

The Maryland Historical Trust (Trust) is dedicated to preserving and interpreting the legacy of Maryland's past. The Trust serves as Maryland's State Historic Preservation Office (SHPO), and provides direct assistance to a broad base of local, state, and federal stakeholders in the identification, protection, and enhancement of heritage resources. The Trust administers a variety of historic preservation grant, loan, and tax credit programs, including the Heritage Structure Rehabilitation Tax Credit, which leverages private investment in the rehabilitation of both commercial and residential historic properties. The Trust also administers and oversees the operation of the Jefferson Patterson Park and Museum in Calvert County, which includes the Maryland Archaeological Conservation Laboratory.





Planning sees Maryland’s cities, communities, and towns as attractive, vibrant places to live, work, play, and learn. We work with communities to help shape a vision for their future that continues to protect and preserve our environment. We view the cultural, historic, and natural resources of our communities as catalysts that strengthen and renew economic and community development.

At Planning, we appreciate the diversity of Maryland’s people and geography. We recognize that successful solutions require balancing the concerns of various interests and stakeholders. It is our responsibility to provide guidance for the direction of state resources most efficiently across jurisdictional lines. We strive to provide customers with the best service, and to help each jurisdiction implement their vision and achieve their goals consistent with respect for people and place.



Planning staff and Governor Hogan show off their Census Maryland 2020 shades at the 2019 Maryland Municipal League conference. The department kicked off its yearlong effort to ensure a complete count of Maryland’s residents in the decennial survey earlier in 2019.



Operations

In addition to continued focus on the governor’s customer service initiative and promise, Planning’s Operations Division provides agency-wide assistance, and support to other agencies and programs.

The Management Information Systems, working with a consultant, developed a website in FY19 to support Governor Hogan’s Emergency Commission on Sixth Congressional District Gerrymandering. The team was tasked with developing a map portal to allow citizens to create and submit proposed plans for the Sixth Congressional District.

Communications supports the agency by highlighting the work of Planning throughout the state. It uses social media platforms to provide information about initiatives and programs, including Census Maryland 2020, A Better Maryland; Maryland Heritage Areas; the Patuxent River Wade-In; and the Trust’s Historic Revitalization Tax Credit program. Communications also provided extensive support during the development and production of the new state development plan, A Better Maryland, including support at meetings, media and website support, and marketing and promotion of the new interactive website.

In FY19, Planning had two departmental legislative initiatives. Chapter 155 of the 2019 Laws of Maryland (SB 55) provides one central location for all land-use plans and amendments, creating a more streamlined and user-friendly system. Additionally, Ch. 143 (SB 51) removes the requirement that the Maryland Heritage Areas Authority (MHAA) make acquisition and development grants for projects only in a “target investment zone.” By removing the target investment zone limitation, Ch. 143 expanded opportunities for heritage tourism in the state.

Planning Secretary Robert McCord (standing, right) and Chief of Staff Adam Gruz are on hand as Governor Hogan signed SB 51 into law.



Planning Services

The Planning Services Division is the core of the agency's planning-related functions. The division's personnel are organized into two sections: 1) Planning Coordination, which includes Local Assistance and Training, Infrastructure, and Development, and Resource Conservation and Management; and 2) Planning Data and Research, which includes Geospatial and Data Analysis, Projections and State Data Center, and Property Mapping.

Planning Coordination Local Assistance and Training

Comprehensive Plan Review and Policy Guidance

Planning Services provides significant technical and policy assistance to local governments implementing state laws. Regional planning staff completed reviews of nine local comprehensive plans and amendments in FY19. In addition, we reviewed 12 municipal annexations, and 54 county water and sewer plan amendments.

Local Technical Assistance

The core function of Local Assistance and Training is to provide technical assistance to jurisdictions either by helping them navigate federal and state regulations or connecting them to the resources that smaller municipalities cannot deploy. Some examples of technical assistance provided in FY19 include:

Town of La Plata, Charles County: Staff coordinated state assistance to the town in the early stages of its comprehensive plan update. This assistance required coordination with the Maryland Department of Transportation (MDOT) and across Planning's units, including participation in topical stakeholder discussion and community meetings, transportation element planning, and development capacity analysis of the town's proposed growth areas.

Allegany County: Staff collaborated with the Canal Place Preservation and Development Authority to complete and publish a request for proposals for its "River Park at Canal Place" project.

Towns of Chestertown, Ridgely, Galena, and Rising Sun, Upper Eastern Shore: At the request of these towns, staff assisted local officials in updating their zoning codes for consistency with comprehensive plans, internal coherence, and usability.

Towns of Willards, Pittsville, Vienna, and Mardela Springs, Lower Eastern Shore: Staff creatively applied and managed Community Development Block Grant funding to address the crucial infrastructure and community development needs of small towns with limited capacity.

City of Havre de Grace, Harford County: Staff conducted a work session with local planning staff to further develop the concept of a downtown conservation district and implement design guidelines.

Education and Training

The Local Assistance and Training unit coordinates Planning’s educational efforts, both locally and statewide. Staff is responsible for Planning’s newsletter, Planning Practice Wednesday (PPW), along with posting available trainings, conferences, webinars, and funding on the website. In FY19, Planning published nine newsletters and expanded the content area to communicate the statewide planning efforts of other state agencies. Topics included the 2020 Census, Planning Commissioner best practices, the Phase III Watershed Implementation Plan, the Maryland Connected and Automated Vehicle workgroup, and Transit Oriented Development.

Maryland Planning Commissioners Association: Staff helped the Maryland Planning Commissioners Association (MPCA) begin implementing the strategic plan developed in FY18 in response to its outreach effort. The MPCA initiated a quarterly regional workshop program with an event in Hagerstown in March 2019.

Local Assistance and Training also assisted MPCA in conducting its annual fall conference in Gaithersburg, with more than 60 registrants, and the inclusion of a session titled *Citizen and Professional Planners: The Vital Partnership*, developed in collaboration with the Maryland Chapter of the American Planning Association. Staff oversaw the online Planning Commissioner Training Course, and multiple in-person trainings in FY19, totaling 192 new certificates of completion.

Reinvest Maryland 2.0 Curriculum Development: Staff, in partnership with the Sustainable Growth Commission, developed a training titled “Overcoming Barriers to Infill and Adaptive Reuse,” a proactive educational implementation measure of the Reinvest Maryland 2.0 document.

Engaging the Next Generation of Planners: Staff awarded Sustainable Growth Challenge awards to students from the University of Maryland, Morgan State University, and St. Mary’s College. Staff also supported Morgan State’s City and Regional Planning Department as part of its Professional Advisory Committee by providing feedback on student capstone projects. Lower Eastern Shore staff supervised a Salisbury University intern as part of its Critical Area Circuit Rider partnership with the Department of Natural Resources.

MPCA President Danny Winborne welcomes attendees to the first ever MPCA Regional workshop in Hagerstown in spring ‘19.



Appalachian Regional Commission

One of Planning's regional planners serves as the program manager for the Appalachian Regional Commission (ARC) facilitating federal, state, and local cooperation and resources to advance economic, community, and workforce development in the three western Maryland counties: Allegany, Garrett, and Washington. Work includes improving accessibility in the region through local road improvements and extension of broadband service to businesses and communities, enhancing educational opportunities and workforce development, and assisting communities with strategies for economic development uniquely focused to maximize the potential of their assets. The shared goal is to create a self-sustaining and growing economy. In FY19, ARC supported 17 projects leveraging more than \$6.6 million in investment. Some of those projects include:

- Investing in the performing arts with the purchase of concessions, tech, artistic enhancement fixtures, and studio equipment for the Maryland Theater expansion in Hagerstown.
- Partnering with Allegany College of Maryland and the community Mind-Body Medicine model to guide the planning process to address the underlying factors contributing to the opioid crisis, and the culture of violence threatening the local schools and community.
- Purchasing educational materials for STEM kits to be used in lesson plans for grades PreK-5 in each of Washington County's 26 elementary schools. The kits provide the foundation of an enhanced school curriculum focused on promoting computational thinking and problem solving.
- Investing in infrastructure improvements within an Opportunity Zone. With new water and sewer infrastructure it will be possible for the Town of Grantsville to attract and support new and existing businesses, leading to private investment, new jobs, an expanded workforce, and new housing opportunities.
- Providing equipment for Allegany County's Maker Space project. This will allow the renovated facility to function as a state-of-the-art training facility for advanced manufacturing as well as a makerspace and business start-up center. Allegany College of Maryland will be the primary tenant of the facility providing a guaranteed revenue stream and workforce training in machining, welding, and industrial maintenance.
- Partnering with the Garrett County Chamber of Commerce to conduct a yearlong survey of county visitors. The study will result in an analysis of visitation and economic impact that will improve public and private sector efforts in marketing and investment in the tourism industry.

Planning by the Numbers

*Federal FY19**

ARC in Maryland

17 supported projects

\$1.9 million investment by ARC

\$4.7 million in matching funds

\$6.6 million leveraged investment

This adds up to:

Jobs created and retained, workers/students trained or educated, Increased economic development and quality of life for 252,000 residents.

**Federal fiscal year October 1, 2018 through September 30, 2019. Federal FY19 information not available at time of Planning's report.*

A Better Maryland

In accordance with Governor Hogan's Executive Order 01.01.2017.18 directing the department to coordinate with local governments and other stakeholders to prepare a new state development plan, Planning submitted the plan, A Better Maryland, to the governor on July 1, 2019. The document is the culmination of two years of outreach, engagement, partnerships, and collaboration. Development of the plan involved extensive coordination, including more than 90 meetings with local government officials, planning and economic development staff, the public, an online survey, as well as consultation with the Smart Growth Subcabinet and Coordinating Committee, Sustainable Growth Commission, Maryland Association of Counties, Maryland Municipal League, and many others.

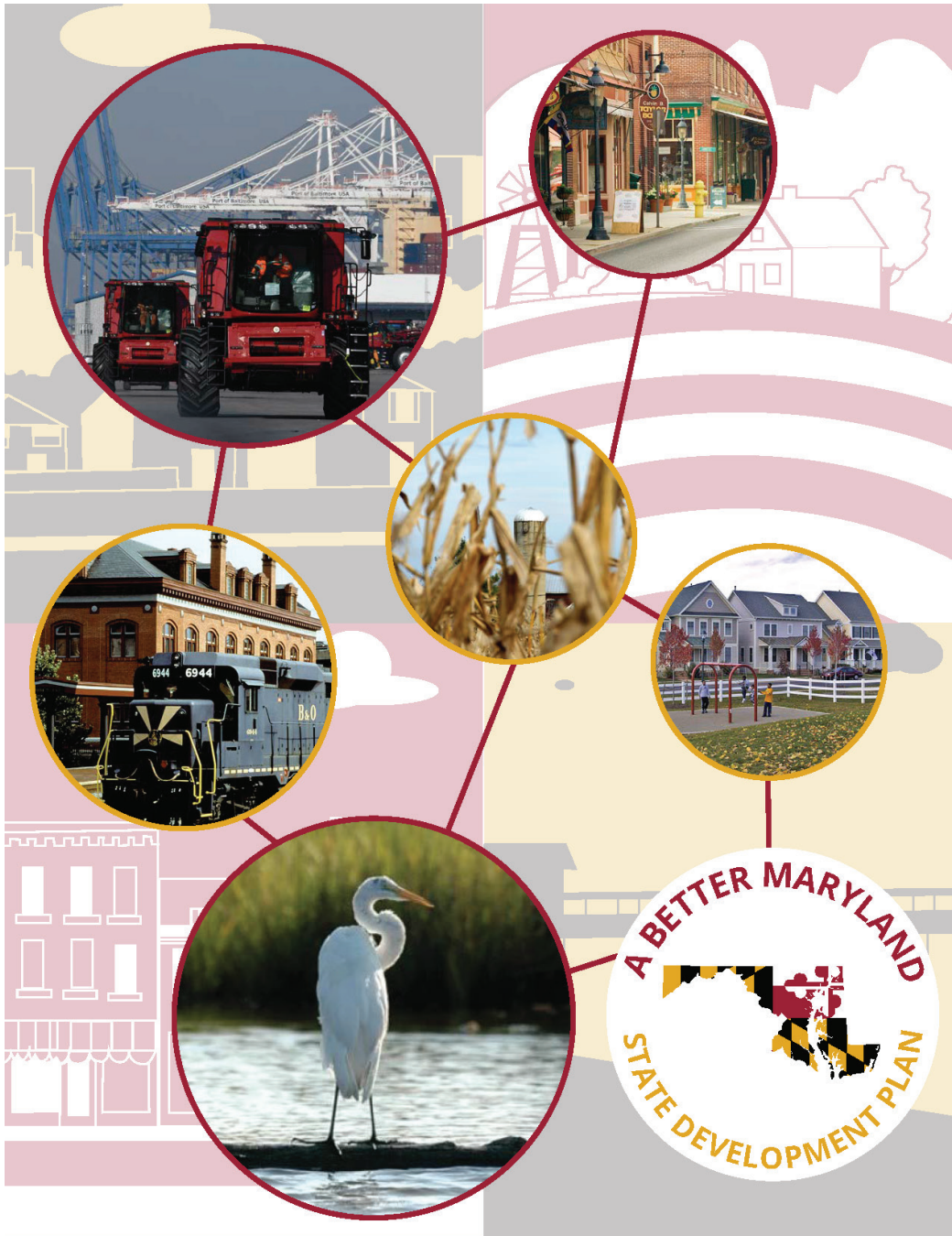
As Governor Hogan said, "The Maryland Department of Planning's new state development plan, A Better Maryland, charts a clear strategic path to preserve Maryland's natural resources while encouraging responsible growth in our existing communities, and providing for future growth and opportunity. It does this with the understanding that the best planning happens locally, which is far more effective than top-down directives. A Better Maryland presents a broad vision that seeks to effectively unite state agencies in their work, addresses some of our most pressing challenges, and gives community and local leaders the tools to change things for the better."

Following the first round of public outreach with 72 initial meetings with local governments and the public, Planning compiled and analyzed input in partnership with other state agencies, the Smart Growth Subcabinet, the Maryland Sustainable Growth Commission, American Planning Association Maryland, and planning directors from across the state. A second round of

public regional outreach meetings occurred in fall 2018 to refine the identified strategies that communities cared about most. With the affirmation of public interests and refinement of the strategies, Planning worked with its state partners to identify resources and programs that could be incorporated into the plan to address these topics and strategies.



The plan submitted to the governor not only includes the document itself but also a dynamic webpage (abetter.maryland.gov) that connects communities, partners, and stakeholders with the tools and resources they need to support locally-directed growth, conservation, development, and interagency coordination. This digital resource center, which will evolve in concert with implementation, consolidates programs across the state, and enhances data accessibility, helping jurisdictions make more informed decisions.



Infrastructure and Development

Interagency Commission for School Construction

Planning remains one of three state agencies involved as a member of the Interagency Commission for School Construction (IAC), the nine-member commission that oversees Maryland's \$300 million investment in K-12 school facilities. Staff works closely with the executive director, the Department of General Services, and the 24 Local Education Agencies (LEAs) across the state.

Each year, Planning also works closely with local facility planners as enrollment projections are reconciled. This data forms the basis of each LEA's Educational Facilities Master Plan, which is reviewed by Planning, and precedes the creation of a Capital Improvement Program (CIP) containing each IAC-approved project.

In FY19, Planning worked closely with IAC staff on several initiatives designed to provide an objective measurement of facility status to inform the need for future investments, including coordination with two workgroups: the Workgroup on Educational Development Specifications, and the Assessment and Funding Workgroup. Planning and IAC staff are also working to improve efficiencies, increase the sharing of information with and across LEAs, and preparing for a new business management system to be implemented by the IAC in FY20.



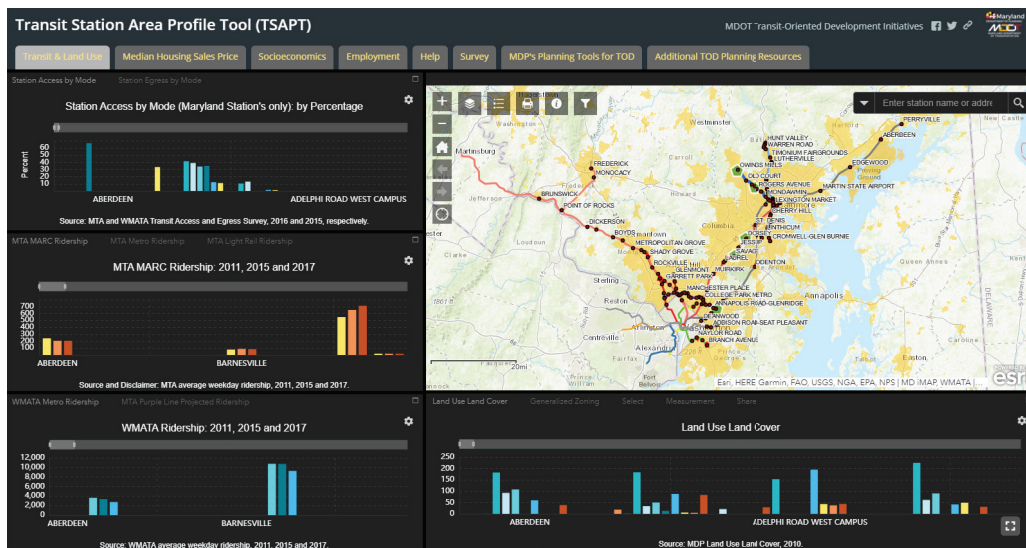
North Dorchester High School in Dorchester County is an example of a modern school facility meeting the needs of an established community.



Transportation Planning

To support Transit-Oriented Development (TOD) and transit investment, Planning develops a variety of tools to assist MDOT, local communities, stakeholders, developers, property owners, and others in their TOD planning and implementation efforts.

In FY19, Planning completed a Transit Station Area Profile Tool web application that provides easier access to demographic and transportation information about Maryland's 129 transit stations, and allows for a streamlined data maintenance and update process. In addition, Planning is building on the completed TOD assessment tool and working with local governments and stakeholders on how to evaluate a community's existing rail stations to determine what steps would be needed to maximize investment in the rail system and promote community transformation around the stations.



In FY19, the unit participated in more than a dozen major transportation studies and provided input on projects to promote multimodal transportation planning to support state and local growth management policies and goals.

Smart Growth Information Clearinghouse

Planning manages the Smart Growth Information Clearinghouse under a cooperative agreement with the U.S. Environmental Protection Agency. The Clearinghouse is the online home of the Smart Growth Network (smartgrowth.org), a national partnership of more than 40 organizations dedicated to promoting and implementing the principles of smart growth.

Planning generates and distributes a smart growth e-newsletter to more than 10,000 recipients nationwide, and hosts a series of webinars directed to planners where participants may earn American Institute of Certified Planners continuing education credits. Planning hosted 11 webinars in FY19, attracting thousands of planners and local government officials throughout the country.



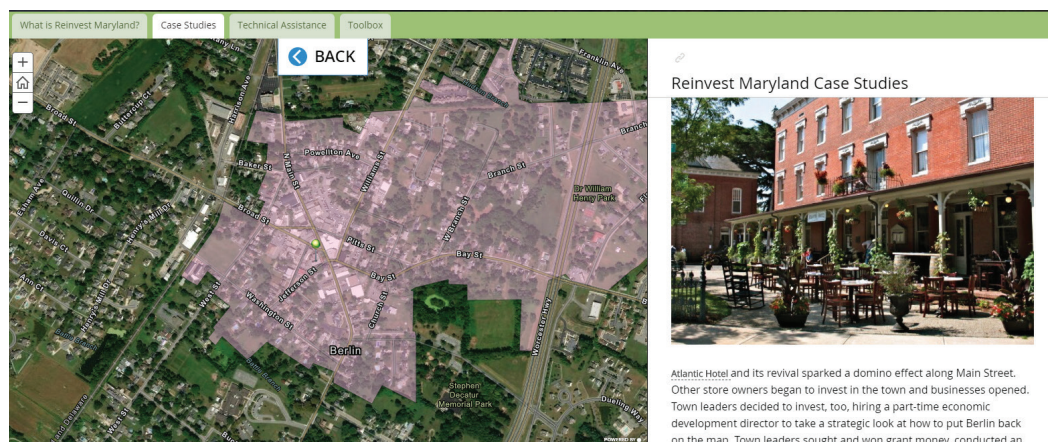
Maryland's Power Plant Research Program

Planning serves on the Power Plant Research Program interagency committee, which reviews proposed medium to large-scale energy-generating facilities in Maryland, while ensuring that demand for electricity is met at a reasonable cost, and the state's valuable natural resources are protected. Planning routinely contacts local planning officials to ensure that communication among parties is ongoing throughout the review process. We remain attentive to local challenges, interests, and opportunities. Planning will continue to review each case for due regard for local land use regulations. Planning utilizes expertise from the Maryland Historical Trust to avoid potential adverse impacts to historic and cultural resources. Planning completed 12 reviews in FY19, mostly solar projects, and began a preliminary review of an additional 10 projects.

Reinvest Maryland

Planning collaborated with the Maryland Sustainable Growth Commission and its Reinvest Maryland workgroup to continue to promote the Reinvest Maryland Toolkit (also known as Reinvest Maryland 2.0). Reinvest Maryland is a guide to accelerating infill, redevelopment and community revitalization at all levels of government to work together, strengthen collaborative efforts to support revitalization and reinvestment, and engage stakeholders in supporting Maryland's communities to improve the quality of life. The website reports on the commission's recommended action plan, includes tools on available state programs and resources, and contains case studies of infill development, redevelopment, and community revitalization projects across the state.

Staff continues to update the website, adding material and enhancing its functionality as state agencies and local jurisdictions continue to provide examples of the best ways to create vibrant places with a range of housing, employment, and transportation options. The site displays maps, links visitors to information about best practices, and includes a searchable toolbox of state programs supporting reinvestment.




Resource Conservation and Management

State Clearinghouse for Intergovernmental Assistance

The State Clearinghouse for Intergovernmental Assistance (the Clearinghouse) is Maryland’s designated single point-of-contact to coordinate local government and state agency review of federal or state projects involving financial assistance or development. The review, which is mandated by federal and state executive orders and state law and regulations, facilitates alignment of plans and policies between federal, state, and local government. All projects and reviews can be accessed on Planning’s website via the Intergovernmental Monitor.

Chesapeake Bay Restoration Planning

Planning provides long-term vision and local government perspective to the Maryland Bay Workgroup, which provides recommendations to the governor’s Bay Cabinet. In FY19, to support one component of Maryland’s final Phase III Watershed Implementation Plan (WIP), Planning successfully implemented a detailed approach to account for the nutrient and sediment benefits of existing and future local and state land conservation efforts in Maryland. Planning also participated in local WIP inventory meetings with the Maryland Department of the Environment (MDE) and local planning, environmental, and public works staff. The meetings supported the development of Phase III WIP by communicating state expectations and goals to local governments, and by obtaining updates on local activities and needs.




Planning by the Numbers *FY19*

- 52 Reviews of Water and Sewer Plan Amendments
- 4 Recertifications of Local Agricultural Preservation Programs
- 27 Application Reviews for Rural Legacy
- 2 Reviews of Land Preservation, Parks, and Recreation Plans
- 23 Review Letters for Program Open Space

This adds up to:

Preserving and protecting the environment with a focus on restoration and protection of our treasured Chesapeake Bay.



Brownfield Redevelopment Outreach

In cooperation with MDE, Planning launched a new brownfield redevelopment outreach initiative by serving as a liaison to counties and municipalities interested in accessing technical and financial resources from federal and state agencies. Planning completed analyses and met with local jurisdictions to identify priority brownfield redevelopment sites. We are building a brownfield revitalization information web tool to assist those interested in bringing these sites to their maximum potential.

Forest Planning Resources

- [Forest Planning Resources Home](#)
- [Designating Areas to Protect](#)
- [Limiting Development in Prioritized Areas](#)
- [Maryland Preservation Dashboard](#)
- [Preserving Forested Areas Onsite During Development](#)
- [Urban Tree Canopy Planning](#)

Forest Resource Planning

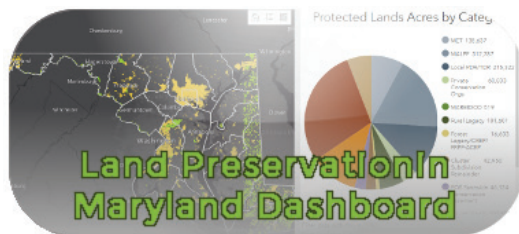
The Forest Resource Planning webpage provides local jurisdictions with guidelines, recommendations, and technical assistance on policies and standards to protect forests and trees as lands are developed. The webpage also provides local jurisdictions with guidance and assistance with green infrastructure and urban tree canopy planning.



Forest Resource Planning Webpage

Planning developed a Forest Resource Planning webpage – planning.maryland.gov/Pages/OurWork/envr-planning/forest/forest-resources.aspx – to provide local jurisdictions with guidelines, recommendations, and technical assistance on policies and standards to protect forests and trees as lands are developed. The page provides local jurisdictions with guidance and assistance with green infrastructure and urban tree canopy planning.

Land Preservation Data



To support state and local land preservation efforts, Planning developed new interagency protocols with DNR on the production of land preservation data, and initiated the development of an online land preservation dashboard, which can be found at:

maryland.maps.arcgis.com/apps/opsdashboard/index.html#/0f3ffd3350b24b17bd3b8e1705af3df5



Maryland InfoPortal

Planning continued its biannual updates of the Maryland InfoPortal tool (planning.maryland.gov/Pages/OurWork/Maryland-InfoPortal.aspx), which is a one-stop-shop for finding financial and nonfinancial assistance offered by state agencies. Planning hosts this digital catalog and coordinates the timeliness and accuracy of the information with a network of contacts.



Agency:

Text:

Eligibility:

- | | |
|---|---|
| <input type="checkbox"/> County Government | <input type="checkbox"/> Regional |
| <input type="checkbox"/> For-Profit | <input type="checkbox"/> State Colleges |
| <input type="checkbox"/> Individuals | <input type="checkbox"/> State University |
| <input type="checkbox"/> Municipalities/Towns | <input type="checkbox"/> State Government |
| <input type="checkbox"/> Non-Profit | <input type="checkbox"/> Other |

Assistance (Financial):

- | | |
|--|--|
| <input type="checkbox"/> Direct Loan | <input type="checkbox"/> Insured/Guaranteed Loan |
| <input type="checkbox"/> Direct Payment/Specified Use | <input type="checkbox"/> Loan |
| <input type="checkbox"/> Direct Payment/Unrestricted Use | <input type="checkbox"/> Project Grant |
| <input type="checkbox"/> Formula Grant | <input type="checkbox"/> Tax Credit |
| <input type="checkbox"/> Insurance | <input type="checkbox"/> Other |

Assistance (Non-financial):

- | | |
|---|---|
| <input type="checkbox"/> Regulatory Program | <input type="checkbox"/> Technical Assistance/Information |
| <input type="checkbox"/> Services | <input type="checkbox"/> Other |

808 matching programs.

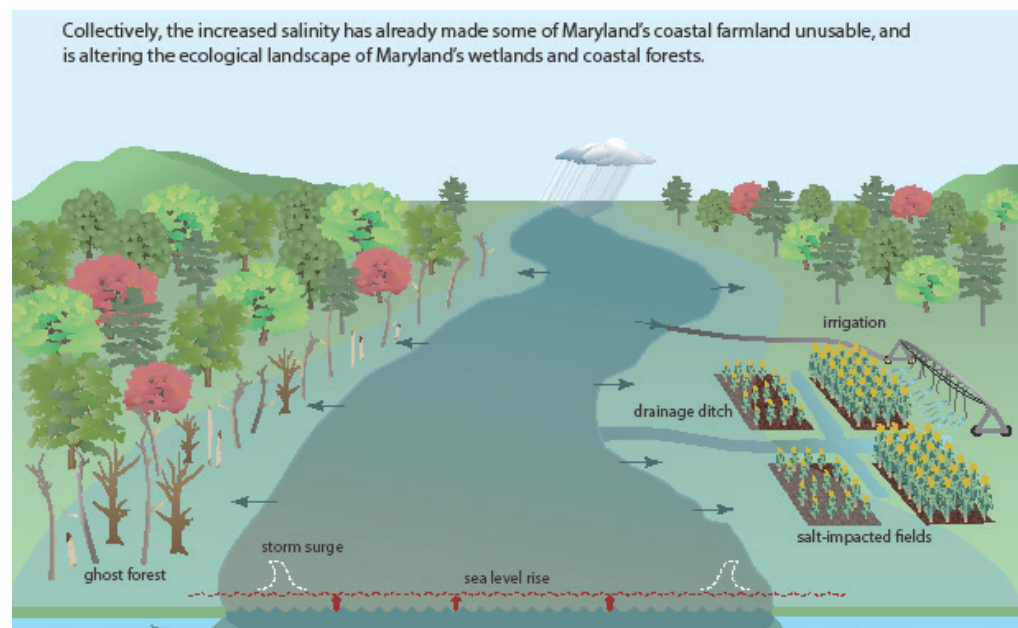
▶ [Homeowners' Tax Credit Program - State Department of Assessments and Taxation](#)



Interagency Coordination and Subcabinet Support

Planning leads and supports several multidisciplinary efforts, including support for several subcabinets, commissions, and executive orders.

Planning led an interagency team to develop a draft plan for Maryland to adapt to saltwater intrusion and salinization, both of which are increasing due to the effects of climate change. To inform the plan, Planning completed extensive research and conducted interviews with subject matter experts. Planning also gave presentations on the draft plan at several forums to gather additional feedback. The plan will be finalized at the end of 2019. Planning also provided support to the Maryland Department of Natural Resources (DNR) as part of an interagency effort to develop guidance for local nuisance flood planning.



Smart Growth Subcabinet

In FY19, staff reviewed and provided feedback on 26 Sustainable Community applications, and conducted site visits to, and submitted comments on, more than 300 neighborhood revitalization grant applications.

Commerce Subcabinet

Staff developed maps for and helped organize a March 2019 kickoff of the Commerce Subcabinet's Regional Resources Workgroup. The workgroup is a major new initiative of the Maryland Department of Commerce, aiming to enhance communication between state agency staff with regional responsibilities across multiple agencies, and increase accessibility for locals seeking state assistance. Planning has a leading role in this effort.



Statewide Joint Land Use Study

In FY19, the Department of Commerce finalized its Statewide Joint Land Use Study, promoting collaborative planning between Maryland's communities and its military installations. Planning collaborated with multiple state agencies, military installations, and the U.S. Department of Defense to begin plan implementation and secure federal funding.

Transportation Coordination

In FY19, staff finalized a new tool to assist local governments by developing a Comprehensive Plan Transportation Element Checklist. Planning also continued monitoring Maryland Department of Transportation's (MDOT) Consolidated Transportation Program priority letters for consistency with local comprehensive plans.

Climate Change Commission Support

As a member of the Maryland Commission on Climate Change, Planning participates on the Adaptation Working Group, providing constructive feedback on this commission's procedures, work plans, and policy recommendations. Similarly, to assist in the governance and direction of the Maryland Climate Leadership Academy, Planning participates in the Academy's Advisory Council. Planning also provided its annual report on greenhouse gases prevented through compact development in Maryland.

Patuxent River Commission Support

Planning provides administrative support to the Patuxent River Commission, which is tasked with supporting local government and state agency implementation of the Patuxent River Policy Plan. This year, the commission expanded the Patuxent River Challenge, which encourages exploration of many ecological and historic amenities within each county in the watershed. Also, Planning completed a 2017-2018 biennial report documenting local and state implementation of the *Patuxent River Policy Plan*, adopted by all seven counties in the watershed and the Maryland General Assembly.

Governor's Project Green Classrooms Support

Planning participates in Steering Committee and Leadership Committee meetings to facilitate implementation of the Governor's Project Green Classrooms initiative, a multi-agency effort to promote outdoor activities and environmental education through schools, in communities, and on public lands to benefit Maryland's youth.



Critical Area Commission Support

Planning participates on the Critical Area Commission as one of 29 members (and one of seven state agencies) to support implementation of the Maryland Critical Area law, and to encourage approaches that respect local government autonomy and provide adequate flexibility.

Maryland Agricultural Land Preservation Foundation (MALPF) Support

To facilitate state and local efforts to support Maryland's agricultural industry and land preservation efforts, Planning participates as one of four state agencies on the board as one of 13 members.



Planning Data and Research

The Planning Data and Research section uses analytical tools and processes to provide the public, local and state officials, and decision makers timely and accurate data and analysis. This section includes several areas, including Geospatial Data and Analysis, Projections and State Data Center, and Property Mapping.

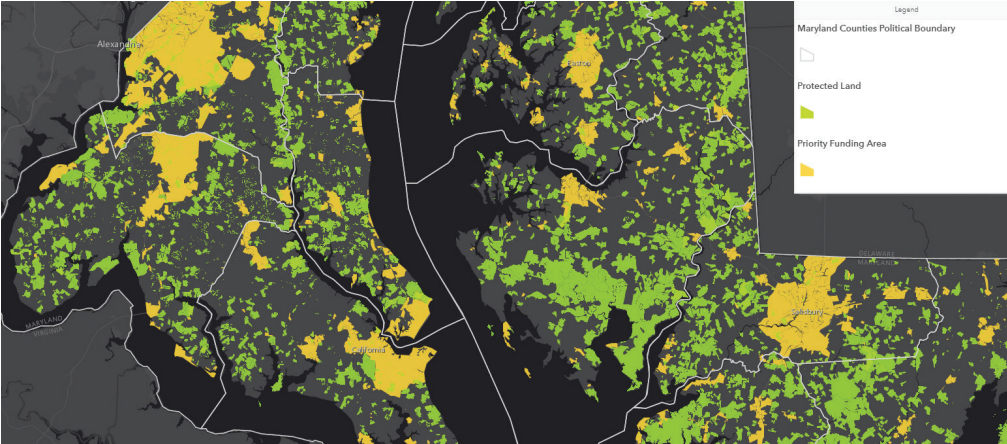
Geospatial Data and Analysis

Foundational Data Updates

New Annexation PFA Determinations: Nineteen new annexations were submitted for review to regional planners. These reviews determine the potential Priority Funding Area (PFA) status after the annexation has been approved and completed. This process is completed before an annexation is approved by the submitting community to streamline the approval process.

Municipal Annexations: Sixteen new annexations in 12 municipalities were mapped following community approval and submittal of the appropriate documentation. Once mapped, data and applications were updated with these 16 annexations.

Protected Lands Database: Data about the location of lands preserved under public ownership or easement are gathered from state and local agencies and private conservation organizations, aligned to MdProperty View digital parcels, and then integrated into a single geographic information systems (GIS) dataset. The data enables Planning to complete analyses that support local planning efforts and create custom maps showing the distribution of protected lands. In FY19, staff worked to initiate the development of an interactive land preservation dashboard.



Statewide Sewer Service Area Update and Amendments: Planning works with all counties and municipalities to collect sewer service area data. In FY19, Planning also updated state sewer service data to reflect more than 20 recent county water and sewer plan amendments approved by MDE. Planning is the sole state agency that updates and maintains a statewide sewer service area database.

MALPF Updates: Under an agreement with the Maryland Department of Agriculture, Planning updated GIS polygons for new MALPF easements and produced maps in PDF format for use at Board of Public Works meetings. The unit then integrated settled easements into Planning's Protected Lands Database in support of GIS analyses.

Generalized Zoning Update: Planning initiated a new update to one of the functional data layers that provides the only statewide comparative map of all 24 jurisdictions' zoning maps. Planning expects this update to be completed in summer 2020.

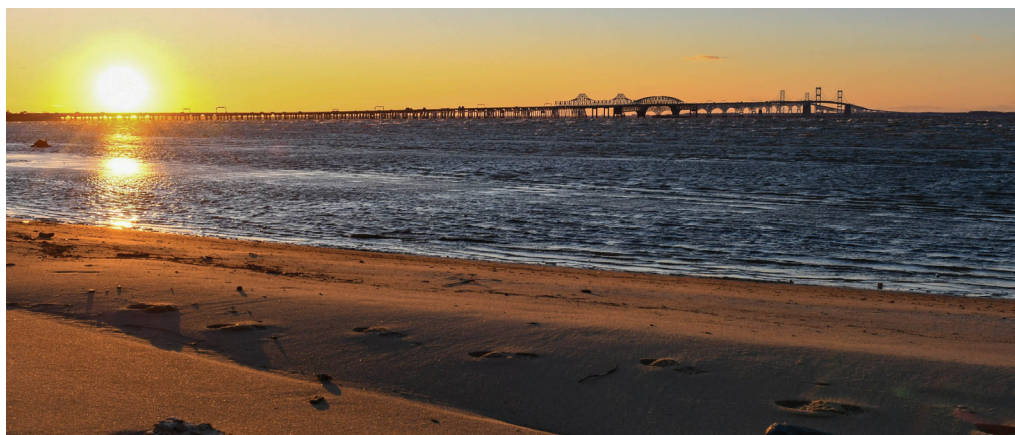
Analysis

Bay Restoration Fund Analysis: As statutory members of the Bay Restoration Fund Advisory Committee, Planning and MDE advise the committee with the best available information and data analysis, and contributes to the annual status report.

Annual Rural Legacy Submission Analysis: In FY19, Planning completed an annual review and evaluation of Rural Legacy funding applications under a Memorandum of Understanding with DNR to further the goals of preserving large, contiguous tracts of land that enhance natural resources, agricultural, forestry, and environmental protection.

Support for the Phase Six Chesapeake Bay Model: Planning collaborated with the Chesapeake Bay Program and local governments by providing data and analysis for several model scenarios. The data is critical to the reevaluation of WIPs to reduce nutrient and sediment loads under the EPA's Total Maximum Daily Load regulations.

The Chesapeake Bay is a vital resource for Maryland's commercial fishing and crabbing industry, recreation, and environmental health. Planning Data & Research contributes to the analysis capability of the state.



Projections and State Data Center

Data Publication and Availability

The State Data Center (SDC) maintains more than 90 datasets, including population and household projections, school enrollment, median income estimates, and statistics on retail establishments and farms. They are posted on the Maryland Open Data Portal, and are foundational to the analysis of public and private sector users through the state. This year, the SDC updated and revised 30 databases.

The SDC also updated the Census Planning Database that is used to fulfill public and local government data requests. SDC developed an interactive web tool that shows predicted low response areas for 2020 Census. The tool customizes a similar program made available by the U.S. Census Bureau, and modifies the focus to variables that are most predictive of low response scores in dashboard fashion.

Statewide Public School Enrollment Projections

SDC prepared the 2019-2028 public school enrollment projections report, which projects public school enrollments by grade for all 23 counties and Baltimore City. The 2018 projections were within 0.4 percent of the actual enrollment.

Population Estimates

SDC prepared national and state-by-state analyses of the annual U.S. Census Bureau Population Estimates. Population estimates were analyzed for Maryland and its counties and municipalities through 2018. As part of the Maryland population estimates analysis, Planning also prepared detailed tables for age, race, and sex for the state and its 24 jurisdictions.

Population and Household Projections

Planning is working on the next cycle of population and household projections by age, race, and sex for Maryland and its 24 jurisdictions. The projections are from 2015 to 2045, and are prepared in five-year intervals. The next projections will be released for review and comment in early 2020 before adoption later that year.

Statewide Demographic Data and Analysis

SDC prepares an analysis report every quarter of the Federal Housing Finance Agency's Home Price Index. The report examines trends in single-family home prices in the U.S., Maryland and its metropolitan regions.



SDC also prepared detailed tables and reports for the 2013-2017, and 2018 American Community Survey (ACS) five-year and one-year data. Data were compiled for Maryland and its jurisdictions, congressional districts, places, metro areas, Census tracts, and zip code tabulation areas.

Additionally, SDC prepared detailed county-to-county migration data for all Maryland jurisdictions for 2012-2016, identifying county in and out-migration as well as interstate migration.

Housing Sales and Development Data

Planning prepared a residential sales summary report for CY17 and CY18, which shows the number of residential sales by type of residence, and the median residential sales value by type of residence. Data are provided inside and outside PFAs for all jurisdictions.

Annual, monthly, and quarterly building permit reports on single-family and multi-family residential units were updated and published for Maryland, and its 24 jurisdictions. Authorized building permit data for all residential developments (single-family, multi-family, and other) were tabulated monthly and published on the SDC website. Annual reports are available online from FY99 to FY17 (FY18 to be online by the end of 2019), quarterly reports through 2nd Quarter 2019, and monthly reports through July 2019.

Planning's Projections and State Data Center unit monitors development trends, analyzes social, economic and other characteristics, and prepares population, housing, employment, labor force, and income projections, which provide a baseline for planning for growth and development in Maryland. A wealth of data and information products are published to users through the department's website.



Localized Economic Analyses

In support of the TOD project, a comprehensive database was developed to help identify the socioeconomic characteristics of the population within a half-mile radius of each train station in Maryland.

Staff updated annual jobs and income data- available from the U.S. Bureau of Economic Analysis- for the 50 states and the District of Columbia, and for Maryland's 24 jurisdictions. Planning analyzed growth trends, and prepared rankings for jobs and income data.

The analysis included personal income by major source and earnings by major industry, as well as wages and salaries by major industry.

SDC prepared a Work Area Profile for the town of Luke in Allegany County to visualize the impact on Maryland residents whose jobs would be lost due to the closure of the local paper mill.

Census Count Review Project

The 2020 Count Review will identify missing housing units and missing or misallocated large Group Quarters (GQs) that will be added to the Census Master Address File. SDC will use State Department of Assessments and Taxations records to compile the address list for the state. SDC compiles all residential and GQ addresses in Maryland and sends this information to the U.S. Census Bureau. The information will be compared to the existing data and the missing addresses will be added based on documentation sent by the SDC. During the review process, Planning was able to locate 130,000 addresses that were either missing or misaligned. This represents a potential to capture billions of dollars of federal revenue by identifying populations that may have been missed.

Participant Statistical Area Program

The Participant Statistical Areas Program enables invited participants to review and update selected statistical area boundaries for 2020 Census data tabulation following U.S. Census Bureau guidelines and criteria. The Census Bureau also will use the statistical areas defined for the 2020 Census to tabulate data for the annual ACS estimates and the Economic Census. SDC reviewed the data and maps and created recommended boundaries using 2010 Census population and housing data for the counties that did not participate in the program.



New Construction Program

The New Construction Program provides tribal, state, and local governments an opportunity to update the U.S. Census Bureau's residential address list with living quarters when construction is in progress during or after March 1, 2018 with completion expected by Census Day, April 1, 2020. The program helps ensure the Census Bureau's address list is as complete and accurate as possible by Census Day, to produce a complete and accurate population count. SDC reached out to all the local governments that issue building permits to send the permit information to the state.

Census Voting District Project

In preparation for the 2020 Census, the U.S. Census Bureau has initiated the Voting District Project, part of the 2020 Census Redistricting Data Program. This project provides states the opportunity to submit their voting districts, or precincts, for inclusion in the 2020 Census Redistricting Data tabulations. In addition, states can submit suggested legal boundary updates as well as updates to other geographic areas. These actions allow states to construct some of the small area geography they need for legislative redistricting.

This program is conducted through Planning in three phases. The first two parts are an initial identification of the voting districts, and a verification phase to ensure the suggested updates were accurately applied. The third phase is an additional round of verification to further review and adjust the voting districts. The first two phases have been completed and the last phase will be completed in early 2020.

Annual State Data Center Training Conference

In September, SDC hosted its annual training conference to train affiliates how to access data from the new Census website. SDC collaborated with the U.S. Census Bureau to organize the conference.



Statewide Emergency Operations Support

Planning leads Maryland's Cultural Resources State Coordinating Function for emergency management planning. Staff provide demographic, economic, housing, and social data products, GIS support and technical assistance to state agencies and local governments in emergencies, and assist with the development of operational plans.

Staff also monitors emergency response activities to identify and locate vulnerable historic properties and cultural resources, and assists homeowners and others to conserve, protect, and restore artifacts and properties. Highlights of the year's activities include:

- Worked with the Maryland Emergency Management Agency, and other state agencies to test a Statewide Disaster Recovery Center. The purpose of the center is to provide information on state resources available to residents and local governments in the event of an emergency. Planning worked with partners to set up a Mock Disaster Service Center, and conduct a recovery workshop at the Maryland Emergency Managers Association Symposium.
- Prepared data products and provided technical support to state agencies that participated in emergency management training exercises, including the biennial federally graded emergency exercise for the Calvert Cliffs Nuclear Power Plant, and assisting Department of Human Services operations at the Repatriation Center exercise at the BWI Thurgood Marshall Airport.
- Participated in the founding of the Maryland Disaster Risk Reduction Working Group (DRRWG). This state agency working group is a product of the Maryland Resiliency Assessment workshop that all state agencies participated in during 2018. The effort is synthesizing ongoing efforts and determining the direction and priorities the state undertakes to target vulnerabilities, reduce risk, and build resilience.



Planning provides demographic, economic, housing, and social data products, GIS support and technical assistance to state agencies and local governments during the incident and recovery stages of state emergencies. The department assists with the development of operational plans. Shown here are Maryland state agencies and other partners at the State Emergency Operations Center in Reisterstown.



The 2020 Census and Support of the State Governor's Complete Count Committee (CCC)

The U.S. Census Bureau conducts a count of every person living in the United States every 10 years, as mandated by the [U.S. Constitution](#). The data collected by the decennial Census determines the number of seats Maryland has in the U.S. House of Representatives, and is also used to distribute billions in federal funds to local communities.



Governor Hogan signed [Executive Order 01.01.2019.03](#) in February 2019 directing the Maryland Complete Count Committee (CCC) to assist the state in achieving a full and accurate count in the 2020 decennial Census. The CCC, which includes nonprofit leaders, elected officials, state agency heads, and county and municipal government representatives, is helping the state prepare and mobilize for the 2020 Census by building partnerships and coordinating with local governments and other organizations.

The Maryland Complete Count Committee convenes for the first time on April 1, 2019, one year to the day until Census Day, April 1, 2020.



The Maryland SDC is designated as the state's liaison to the U.S. Census Bureau under its State Data Center (SDC) program. The SDC program is one of the bureau's longest and most successful partnerships, which was created to make Census data more accessible to Marylanders.

The Maryland SDC is a key partner in providing technical assistance to the U.S. Census Bureau in preparation for the 2020 Census and subsequent activities. Planning provides support in three programmatic ways:

- Provides foundational data- Planning's computerized parcel database of Maryland's more than two million records helps to ensure the U.S. Census Bureau's address files and maps are up-to-date and complete during the Local Update of Census Addresses operation.
- Acts as a conduit for access to Census data- Through a cooperative agreement with the Census Bureau, SDC provides access to and dissemination of Census and related federal statistical data to users in Maryland.
- Provides Redistricting Technical Support- Planning supports the redistricting process through data acquisition, analysis and dissemination of data to the public.

In 2020, every household will have the option of responding to the Census online, by mail, or by phone. The goal of the 2020 Census is to count everyone once, only once, and in the right place.



Howard County promotes 2020 Census Maryland at their Independence Day parade 2019. Planning provides outreach support and materials, such as the banner pictured at left, and 2020 Census Maryland flyers, which have been translated into more than 20 languages.



Property Mapping

Statewide Parcel Data Management

In FY19, Planning assembled parcel boundary files from local government sources, then linked the files to property assessment data for use in GIS and online applications hosted by Planning and other state agencies. This data is also available as a free download from Planning's website, and in the case of the *FINDER* Quantum product, is bundled with free, open source GIS desktop software and a customized project file.

Tax Map Product Updates and Enhancements

Property Mapping performed updates and maintenance of the state's tax assessment maps, which are made available in paper or digital image format. They are also used in geographic information systems such as Planning's downloadable data products, including *MdProperty View* and *FINDER* Quantum, and as an image service on MD iMAP.

Prince George's County Map Enhancements

With the assistance of the Maryland-National Capital Park and Planning Commission and Prince George's County, Property Mapping integrated vector parcel data with Tax Assessment Map production, resulting in an overhaul of maps (181 in total), which increased their accuracy and cartographic quality.

Planning by the Numbers FY19

Data Products Downloads

5,943 *MdProperty View* files

1,610 *FINDER* Quantum files

Online Parcel Map Visits

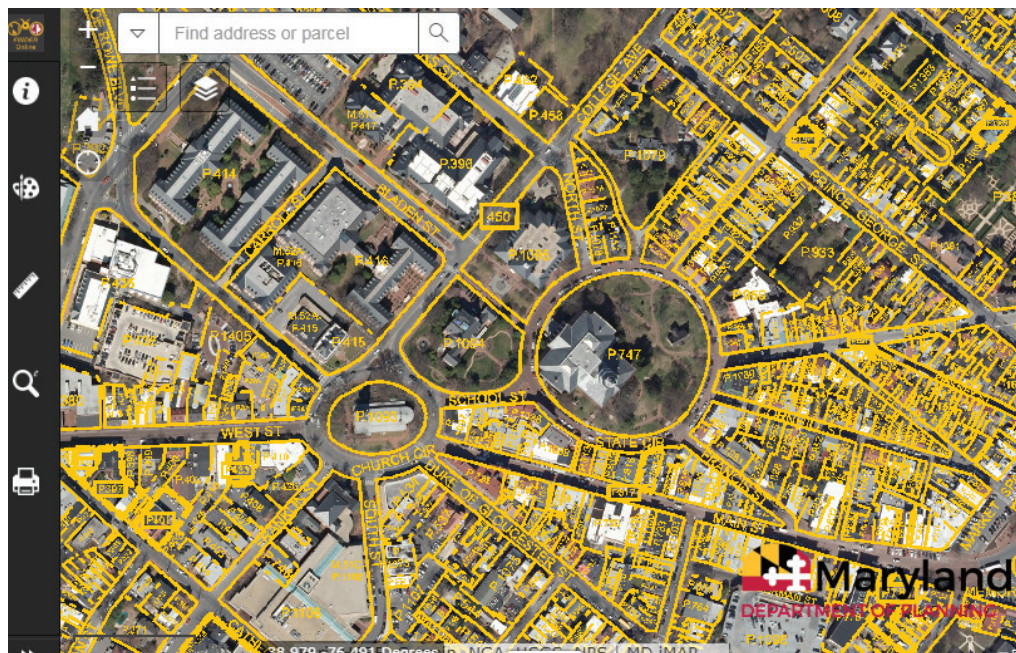
119,886 visits to *FINDER* Online

126+,787 visits to Parcel Viewer

This adds up to:

Citizens and businesses having important data available when they need it.

FINDER Online is Planning's online property information and parcel mapping system. Tax maps, property information, and aerial imagery combine to make a robust database of Maryland's 2.3 million parcels. Users can locate a property by searching or navigating the interactive map.



Maryland Historical Trust

In FY19, the Maryland Historical Trust (the Trust) administered a wide variety of research, protection, and financial assistance programs that aid state and local governments, nonprofit organizations, and individuals to undertake preservation-related activities.

Office of Planning, Education, and Outreach

Heritage Areas Program

Governed by the Maryland Heritage Area Authority (MHAA) and administered by the Trust, the Maryland Heritage Areas Program provides targeted financial and technical assistance within 13 locally designated Heritage Areas, each of which represents a unique aspect of Maryland's historic and cultural character.

In FY19, 170 grant applications were submitted, totaling \$7,277,876 in requests for heritage tourism projects and activities statewide. MHAA awarded \$4,998,692 to 113 projects that foster economic development through heritage tourism, leveraging \$4,419,472 in nonstate matching support. Governor Hogan's FY19 Budget proposal increased MHAA appropriation to \$6 million, providing \$5.1 million for MHAA grants, of which \$100,000 was reserved for emergency grant requests. The Governor's legislation was enacted on May 8, 2018 as Ch. 570 of the 2018 Laws of Maryland.



Community members celebrate one of Baltimore's oldest neighborhoods at the Jonestown Festival, funded in part by a Maryland Heritage Areas Authority FY19 Block grant. Photo by Will Kirk, courtesy of the Jewish Museum of Maryland (Baltimore National Heritage Area)



Statewide Preservation Plan

PreserveMaryland II



The Statewide Preservation Plan (2019-2023)

In FY19, the Trust developed *PreserveMaryland II*, the statewide preservation plan and five-year guidance document for government agencies, nonprofit advocates, and others involved in historic preservation, archeology, and cultural heritage in Maryland. This plan will be included along with plans from other state agencies in the digital version of A Better Maryland. To develop the plan and make recommendations for the future, the Trust convened an interdisciplinary advisory committee and solicited feedback via open public meetings around the state, conducted focus groups and surveys, as held stakeholder interviews. Based on this feedback, *PreserveMaryland II* retains the goals of the previous

plan, *PreserveMaryland*, with new and enhanced action items:

- Connect with broader audiences;
- Improve the framework for preservation;
- Expand and update documentation;
- Build capacity and strengthen networks; and
- Collaborate toward shared objectives.

Local Government Assistance

As part of the Certified Local Government program, administered in partnership with the National Park Service (NPS), the Trust awarded \$84,346 to seven of the 21 local government program participants. Funds supported preservation and archeology projects as well as education and training.

Weather It Together Program

The statewide *Weather It Together* program is aimed at protecting historic places, archeological sites, and cultural landscapes from the effects of natural hazards, such as flooding, wind, and coastal erosion. In FY19, staff offered one-on-one technical assistance to aid local governments in hazard mitigation planning, and state and federal partners working in historic communities. Staff also presented on the program at the Maryland Association of Historic District Commissions' annual symposium.



Office of Research, Survey, and Registration

Research and Survey

In FY19, the Trust completed a project funded by NPS to document historic sites related to the Women’s Suffrage Movement in Maryland. It also undertook dendrochronology on Wyoming, an important early house in Prince George’s County, as well as an additional significant documentation project of the dome of the Maryland State House, using laser scans and drone images. Also, in October 2018, staff hosted a fieldwork symposium that included nine presentations on various subjects. Approximately 100 people attended the all-day symposium. Due to the success, the Trust is making this an annual event. In FY19, the Historic Preservation Non-Capital Grant Program provided \$300,000 to assist local governments and nonprofits for research, planning, and outreach activities, including archeological projects.

Staff added 245 standing structures and survey districts and 116 updates, to the Maryland Inventory of Historic Properties, (MIHP), totaling more than 9,546 acres. Staff also added 146 archeological sites and 43 archeological survey reports to the inventory.

National Register of Historic Places

As Maryland’s SHPO, the Trust nominates Maryland properties to the National Register of Historic Places, maintained by NPS. Through these listings, 1,207 Maryland properties are afforded the benefits and protections of National Register designation. In FY19, NPS added seven individual properties in Maryland: Mason and Dixon West Line Markers 76 and 77 (Frederick County); New Town Center (Prince George’s County); Mercantile Deposit and Trust (Baltimore City); Cockey-Jamison-Hendrickson House and Store (Frederick County); Cool Hollow House (Washington County); Lime Kiln Bottom (Baltimore County); and Oakland (Frederick County).



The Cockey-Jamison-Hendrickson House and Store have been central to the community of Urbana since the mid-19th century.



Cultural Resources Information System

In FY19, the Trust improved its map-based version of Medusa, the state's cultural resource information system, which provides online access to data on more than 45,000 known architectural and 15,000 known archeological resources. Most notably, it made available data about the state's roadside historic markers, adding to existing data from the MIHP (both architectural records and archeological site records), the National Register of Historic Places, and the state's historic preservation easements.

Military Monuments and Roadside Markers

In FY19, the Trust coordinated maintenance for 15 monuments in the central part of the state, including one bronze tablet that had never received conservation treatment. In FY19, three markers were installed as part of the Maryland Roadside Historical Marker Program.



Diane Fullick treats the "Victory" World War I Monument monument in Frederick (above).

Major General Linda L. Singh, Chair of the Commission on the Commemoration of the 100th Anniversary of the Passage of the 19th Amendment to the US Constitution, and MHT Director Elizabeth Hughes unveil the new marker commemorating the Just Government League, Maryland's largest women's suffrage advocacy organization (left). *Photo: Carroll County Times*



Office of Preservation Services

Review and Compliance

In FY19, the Trust reviewed more than 6,400 public undertakings pursuant to federal and state historic preservation legislation to assess the effects of those projects on cultural resources. Staff formally evaluated more than 650 resources identified within project areas for their eligibility in the National Register of Historic Places. Consultation resulted in 25 formal agreement documents to resolve the adverse effects of projects on significant cultural resources and afford pertinent mitigation measures.



The National Park Service constructed the new wooden stairwell on top of the existing deck, with no damage to the historic resource, enabling pedestrians and bicyclists to conveniently cross the canal and access the towpath and directly experience this unique transportation element of the C&O Canal's cultural landscape.

Heritage Structure Rehabilitation Tax Credit Program

Maryland's Revitalization Tax Credit Program has helped restore thousands of homes and commercial buildings that contribute to the distinct character and economic vibrancy of Maryland's towns, cities, and rural areas. In FY19, 117 applicants sought more than \$30.8 million in tax credits for construction projects totalling an estimated \$171.4 million. The Trust awarded more than \$9 million in tax credits, expected to leverage private investment of more than \$58 million. In FY19, the program approved 13 proposed Small Commercial Tax Credit projects worth more than \$455,000 and 205 proposed Homeowner Tax Credit projects worth an estimated \$2.2 million across the state.

Emerson Mansion in Baltimore City received \$1,000,000 in FY19 tax credits. The rehabilitation of the c. 1895 mansion will reactivate this significance property to serve the neighborhood as a community resource center.

During the 2019 session of the Maryland General Assembly, the legislature made changes to the state historic tax credit program including renaming the program the Revitalization Tax Credit Program. A change to the small commercial program has expanded the universe of eligible projects to include the redevelopment of rental residential housing as well as the speculative commercial development of housing units for sale to homeowners. The legislature also created an additional tax credit designed to incentivize use of the state historic tax credit in areas designated as Opportunity Zones for competitive commercial and small commercial projects.



Capital Grants and Loans

The Trust provided \$1 million in capital grants to 12 projects under the 2019 African American Heritage Preservation Program. The program received 35 eligible applications for a total funding request of more than \$3.04 million. In FY19, Governor Hogan fully funded the Historic Preservation Capital Grant Program and awarded \$600,000 to 10 capital projects in six counties and Baltimore City. The program received 46 applications requesting a total of \$3.23 million in funding for projects, including acquisition and rehabilitation.

Historic Preservation Easement Program

In FY19, the Trust acquired four new easements and modified one existing easement. The program currently holds 710 easements on 928 properties, encompassing approximately 7,720 acres statewide, most providing perpetual protection. During the year, staff reviewed approximately 198 requests from property owners/operators for changes to these easement properties, including full scale projects and minor alterations. Staff conducted 90 easement property inspections statewide.

The East New Market Passenger Depot located in Dorchester County has recently completed an exterior rehabilitation of the depot including repair of the historic windows, in-kind siding replacement, new chimney, repainting and installation of a new ADA accessible ramp.

Top right: before rehabilitation

Bottom right: after



Jefferson Patterson Park and Museum

Jefferson Patterson Park and Museum (JPPM) is a 562-acre state facility located on the Patuxent River in Calvert County. The park supports the preservation of Maryland's cultural resources and connects people to the past through the preservation and interpretation of onsite historical and archaeological resources. The grounds contain more than 65 documented archeological sites spanning more than 9,500 years, and are home to 15 buildings and structures constructed and used by the benefactors, Mr. and Mrs. Patterson. Park resources are interpreted through museum displays, interpretive trails with accompanying signage, and digitally through a website. JPPM is also home to the Maryland Archaeological Conservation (MAC) Laboratory.

Educational Programs and Events

In FY19, more than 100,000 people visited the park. In October 2018, the park hosted its 2nd annual JPPM Halloween Festival and the 3rd annual 5k Run/Walk. In November 2018, JPPM celebrated American Indian Heritage Day with hands-on activities and programs in the park's recreated Indian Village. During spring 2019, the annual Discovering Archaeology



Day and egg hunt were held, and the H2O exhibit opened. H2O Today is a Smithsonian traveling exhibit that invites visitors to explore the beauty and essential nature of water, our planet's lifeblood, through immersive content, interactive displays, and digital media. The exhibition explores the diversity and challenges of global water sources, and promotes conversation, creativity, and innovation across disciplines. In early June 2018, the park hosted Children's Day on the staff joined former State Senator Bernie Fowler for the 31st Annual Patuxent River Wade-In, as citizens and elected officials joined to focus attention on the need to clean up the Patuxent River.

JPPM's commitment to serving area schools continued through two onsite programs, one designed for fourth graders, and another for sixth graders. As in years past, staff worked with students from Huntingtown High School on an archeology-based project. This year the high school's Archaeology Club presented their research findings during JPPM's annual Speaker Series. In total, more than 3,500 children participated in educational programs in FY19.

More than 1,000 children went on the hunt for 8,000 eggs during the annual JPPM Egg Hunt and Discovering Archaeology Day event on April 20, 2019.



Maryland Archaeological Conservation Lab

In FY19, staff conserved artifacts from clients throughout the United States, including NPS, Delaware State Parks, City of Deadwood, South Dakota, New York State Museum, Alexandria Archaeology, Valley Forge, Calvert Marine Museum, Chesapeake Beach Railway Museum, James Madison's Montpelier, Thomas Jefferson's Monticello, and Thomas Jefferson's Poplar Forest.

In FY19, the MAC Lab revised the Curation and Conservation Standards and Guidelines. This document provides guidelines to archaeological contracting firms and scholars for the submittal of archaeological collections to the lab. The new guidelines took effect on Jan. 1, 2019.

Head conservator Nichole Doub works with the new digital x-ray software.



THE CUSTOMER SERVICE PROMISE

The State of Maryland pledges to provide constituents, businesses, customers, and stakeholders with services in the following manner:

- **Friendly and Courteous:** We will be helpful and supportive and have a positive attitude and passion for what we do.
- **Timely and Responsive:** We will be proactive, take initiative, and anticipate your needs.
- **Accurate and Consistent:** We will always aim for 100% accuracy, and be consistent in how we interpret and implement state policies and procedures.
- **Accessible and Convenient:** We will continue to simplify and improve access to information and resources.
- **Truthful and Transparent:** We will advance a culture of honesty, clarity and trust.



CHANGING
Maryland
for the Better



Maryland Department of Planning
301 W. Preston St., 11th Floor
Baltimore, MD 21201
Planning.Maryland.gov
(410) 767-4500 • (877) 767-6272
Publication Number: 2019-102
November 2019



Larry Hogan, Governor
Boyd Rutherford, Lt. Governor

Robert S. McCord, Secretary
Sandy Schrader, Deputy Secretary