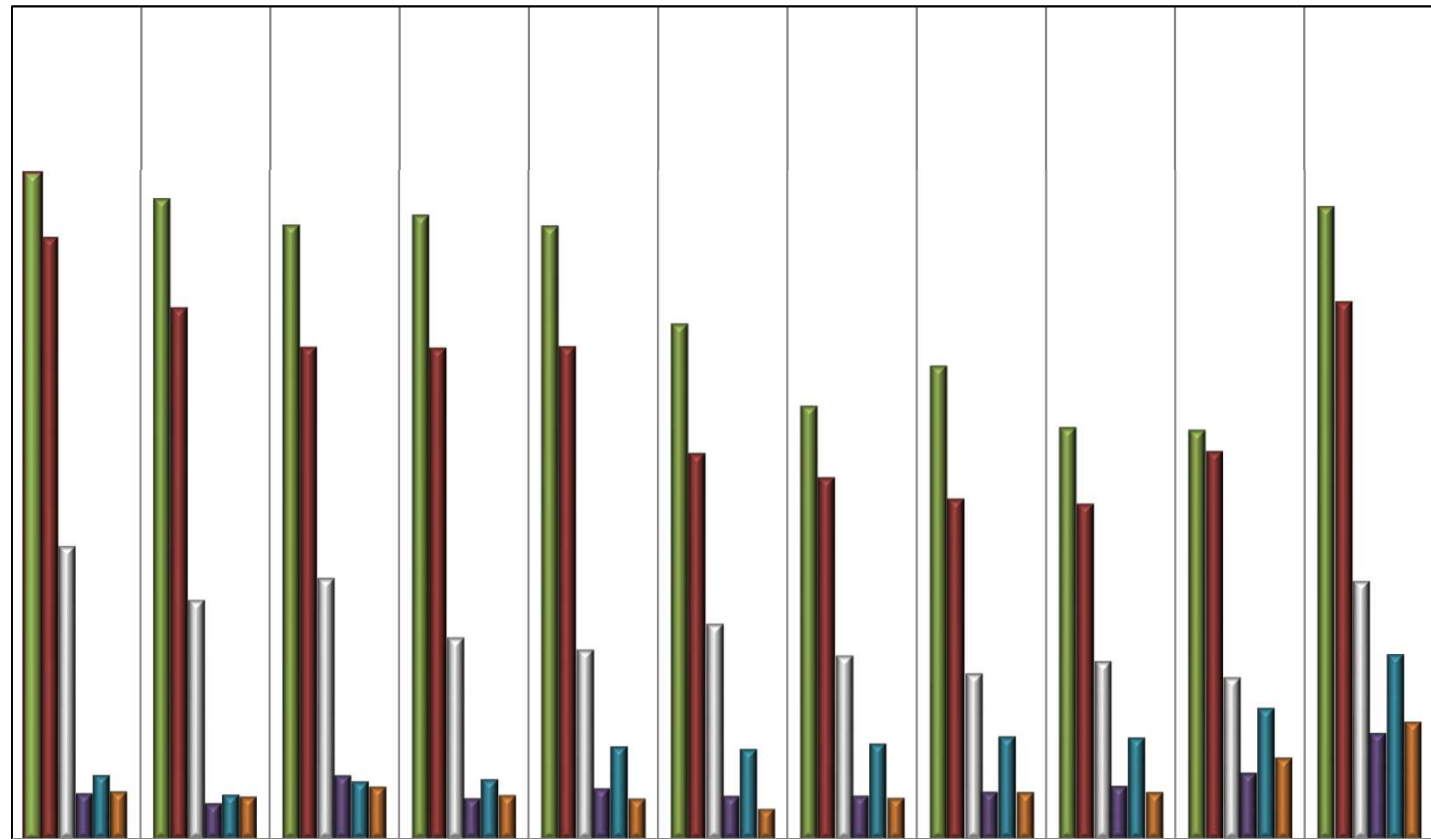


**Chart 2B. MARYLAND STATE PLANNING REGIONS
New Single Family Housing Units Authorized for Construction:
2017 - 2007**



	2017	2016	2015	2014	2013	2012	2011	2010	2009	2008	2007
■ BALTIMORE REGION	4,797	4,612	4,421	4,494	4,414	3,711	3,121	3,409	2,967	2,948	4,554
■ SUBURBAN WASHINGTON	4,334	3,830	3,545	3,539	3,550	2,782	2,609	2,455	2,422	2,796	3,873
■ SOUTHERN MARYLAND	2,109	1,722	1,879	1,454	1,366	1,552	1,324	1,195	1,283	1,168	1,858
■ WESTERN MARYLAND	334	262	462	299	371	315	317	345	385	481	766
■ UPPER EASTERN SHORE	464	324	419	434	669	650	691	742	734	946	1,333
■ LOWER EASTERN SHORE	346	309	382	321	297	222	300	343	342	588	848

SOURCE: U. S. Bureau of the Census. Economic Indicators Division. Residential Construction Branch. 2018.
Prepared by MD Department of Planning. Planning Services Division. 2019.