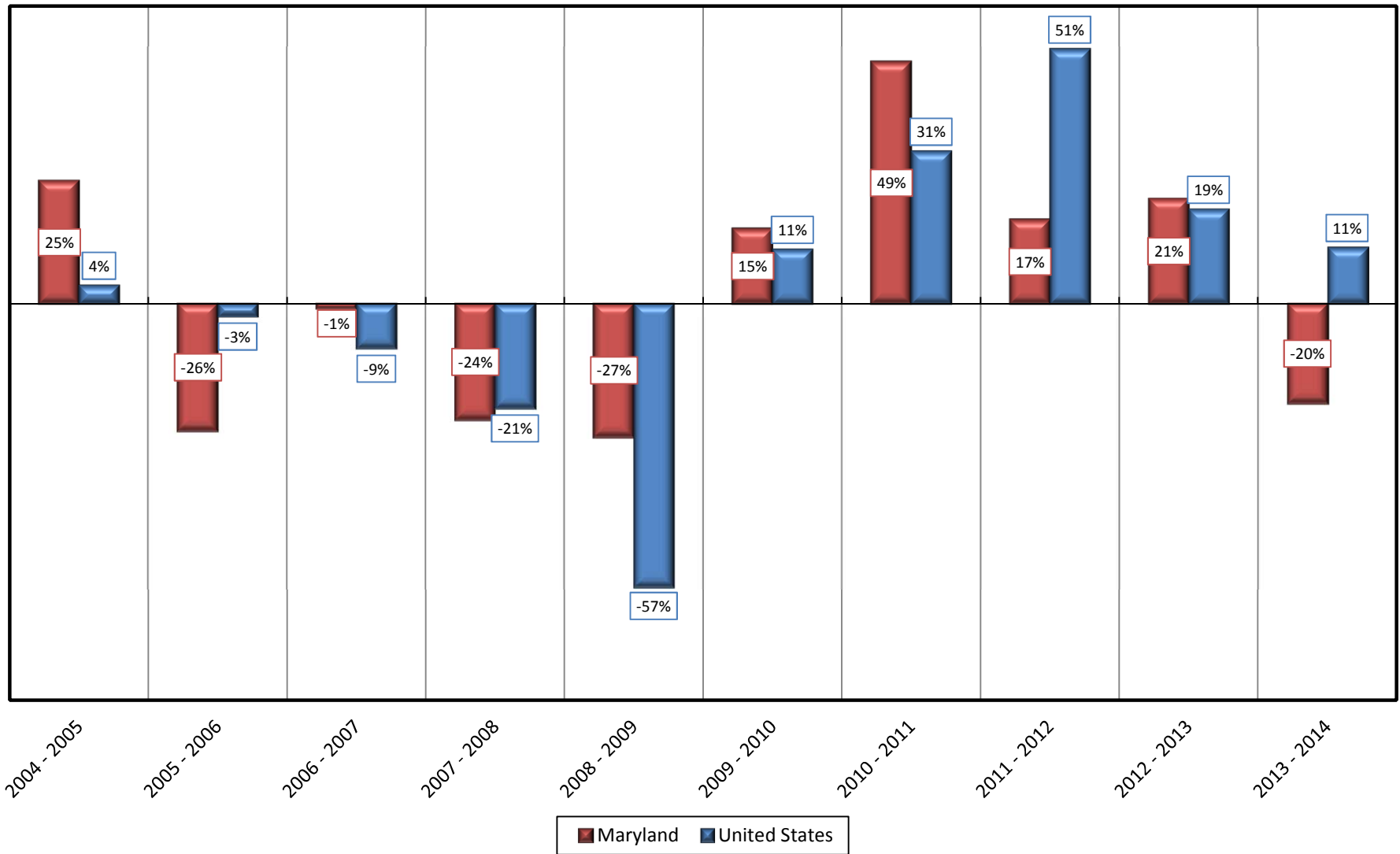


Chart 1C.1 MARYLAND AND UNITED STATES
Change in New Multi Family Housing Units Authorized for Construction:
2005 - 2014



SOURCE: U. S Department of Commerce. Bureau of the Census. Residential Construction Branch. 2015.
 Prepared by MD Department of Planning. Planning Services. Socio Economic Projections and State Data Center. 2015.