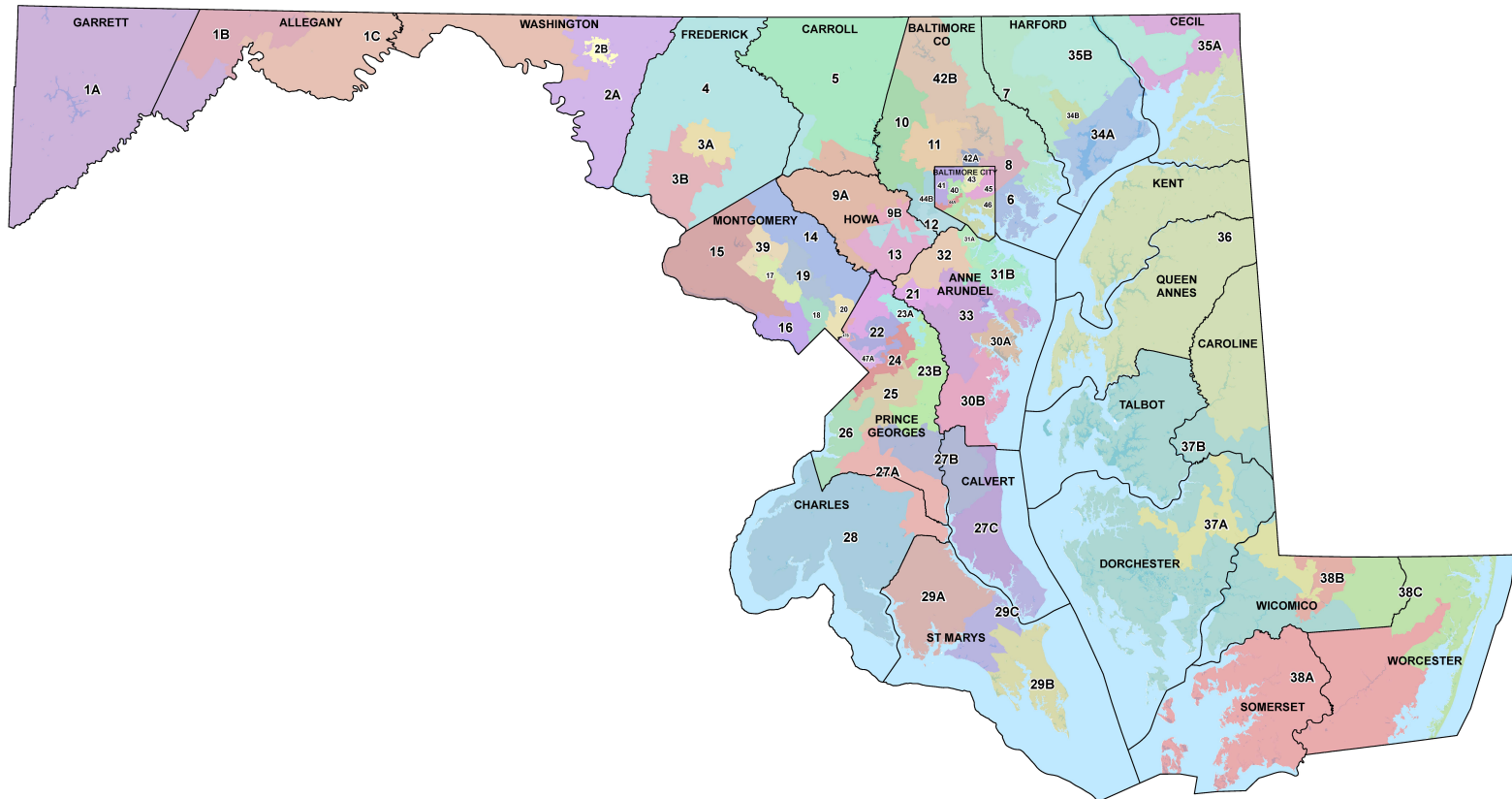


Demographic, Social, Economic, Housing and Journey to Work Data for Maryland's House of Delegates Legislative Districts

2014-2018 American Community Survey 5-Year Estimates



Lawrence J. Hogan, *Governor*

Boyd K. Rutherford, *Lt. Governor*

Robert S. McCord, *Planning Secretary*



Description of the Data

What is the American Community Survey (ACS)? What are Five-Year Estimates?

The American Community Survey (ACS) is a nationwide survey designed to collect demographic, social, economic, and housing data every year. The U.S. Census Bureau releases data from the ACS in the form of both single-year and multiyear estimates. Unlike previous Census Bureau data products, the ACS is not concerned with creating population counts, but with collecting data on population characteristics. In the past, population characteristics were collected every ten years through the “long form” of the decennial census, which was sent to a sample of the total population (approximately one in six households in 2000). The ACS replaces this form with a program that initially sampled 250,000 unique housing unit addresses per month, or 3 million per year. The sampling rate has since been increased with the 2015 ACS sampling 3.54 million unique address. But even after five years of accumulated sampling, the ACS will still have a smaller sample size than the decennial census, which makes it important to pay attention to margins of error associated with these estimates (see “What is a Margin of Error” below).

This rolling sample allows population characteristics for large areas (those over 65,000 in population) to be reported yearly, instead of once every ten years under the previous “long form” system. Characteristics for areas containing less than 65,000 persons, are reported as five-year period estimates. These differences from the decennial census mean that ACS data are more timely, but cannot be used to pinpoint a particular point in time (unlike the decennial census, which is for April 1st of the census year). For more information on the ACS, how the data are collected, and how they should be used, please refer to *A Compass for Understanding and Using American Community Survey Data: What General Data Users Need to Know* (October 2008), available online from the U.S. Census Bureau at: <http://www.census.gov/programs-surveys/acs/guidance/handbooks.html>

What is a Margin of Error (MoE)?

Because the ACS is a sample of a population, its results are subject to sampling error. This error also existed in the previous “long form” but due to the larger sample size it was generally not reported by the Census Bureau. Because of the methodology and the smaller sample sizes used to create the ACS, the reported data may have larger errors than experienced data users are used to seeing. The Census Bureau now reports a margin of error (MoE) based on a 90 percent confidence level that allows data users to understand just how accurate the data are and how that should be used. Generally, five-year period estimates will have a smaller MoE than one-year estimates. Estimates with too few sample cases to create a reliable estimate are marked with the letter “N” in the tables. For more information on this subject, please refer to *American Community Survey Accuracy of the Data (5-year 2014-2018)*, available online from the U.S. Census Bureau at https://www2.census.gov/programs-surveys/acs/tech_docs/accuracy/MultiyearACSAccuracyofData2018.pdf

On February 24, 2012, Maryland's Legislative Districts, based on 2010 Census redistricting, took effect. The data in this handbook are for these district boundaries. These districts are displayed in the following map. <http://www.mdp.state.md.us/PDF/Redistricting/2010maps/Leg/Statewide.pdf>

Additional data for legislative districts in a profile format can be found on the Maryland Department of Planning's State Data Center web site at https://planning.maryland.gov/MSDC/Pages/american_community_survey/2014-2018ACS.aspx

General Demographics

From the 2014-2018 American Community Survey 5-Year Estimates

2014-2018 American Community Survey 5-Year Estimates for Maryland Legislative Districts (House of Delegates)

Jurisdictions	Percent Single Female													
	Total Population	MoE* +/-	Median Age	MoE* +/-	Percent Age 65 & Over	MoE* +/-	Percent Foreign Born	MoE* +/-	Percent Speak English "Less than Very Well"	MoE* +/-	Percent Age 65 & Over Living Alone	MoE* +/-	Household with own Children under 18	MoE* +/-
Legislative Subdistrict 1A	39,889	511	45.4	0.7	21.7%	0.5%	1.0%	0.3%	0.8%	0.5%	13.8%	1.5%	5.0%	0.9%
Legislative Subdistrict 1B	40,849	777	41.4	0.8	18.8%	0.8%	2.4%	0.5%	1.2%	0.4%	14.9%	1.5%	5.5%	1.3%
Legislative Subdistrict 1C	39,380	1,060	42.4	1.5	19.3%	1.0%	1.9%	0.5%	0.8%	0.3%	14.2%	1.3%	6.2%	1.2%
Legislative Subdistrict 2A	90,093	801	42.6	0.5	17.8%	0.5%	4.2%	0.6%	1.9%	0.4%	13.3%	1.1%	4.3%	0.9%
Legislative Subdistrict 2B	40,953	469	34.7	1.0	12.2%	0.8%	8.2%	1.3%	4.3%	0.8%	10.4%	1.2%	14.3%	2.1%
Legislative Subdistrict 3A	84,378	621	36.6	0.6	13.2%	0.5%	17.0%	1.2%	8.9%	1.0%	10.4%	0.8%	6.4%	0.9%
Legislative Subdistrict 3B	44,375	1,029	38.9	0.7	13.2%	0.7%	12.9%	1.7%	5.5%	1.1%	8.7%	1.2%	5.4%	1.1%
Legislative District 4	132,688	1,245	41.4	0.4	14.2%	0.3%	5.2%	0.5%	2.0%	0.4%	8.6%	0.6%	4.1%	0.6%
Legislative District 5	127,436	838	42.7	0.4	16.7%	0.2%	3.7%	0.4%	1.3%	0.3%	10.9%	0.8%	4.0%	0.5%
Legislative District 6	123,233	1,592	38.6	0.6	15.9%	0.5%	7.6%	1.0%	4.2%	0.7%	13.4%	0.8%	8.2%	0.8%
Legislative District 7	131,798	2,069	42.5	0.7	17.2%	0.6%	6.0%	0.8%	2.2%	0.4%	9.6%	0.8%	4.0%	0.6%
Legislative District 8	124,666	2,201	38.4	0.9	16.2%	0.6%	13.3%	0.9%	5.7%	0.8%	13.4%	0.8%	7.0%	0.9%
Legislative Subdistrict 9A	90,582	1,494	44.1	0.5	15.8%	0.6%	12.4%	0.9%	3.9%	0.4%	8.6%	0.8%	2.9%	0.7%
Legislative Subdistrict 9B	46,943	1,195	39.8	1.0	13.8%	0.8%	27.9%	1.9%	9.5%	1.2%	8.2%	1.2%	4.1%	1.1%
Legislative District 10	122,838	2,268	38.7	0.6	13.8%	0.6%	14.7%	1.1%	5.1%	0.7%	9.0%	0.9%	9.8%	1.1%
Legislative District 11	125,572	1,996	40.3	0.7	18.4%	0.5%	18.2%	1.2%	7.2%	0.9%	13.9%	0.9%	6.1%	0.8%
Legislative District 12	124,670	2,346	36.7	0.7	14.9%	0.4%	16.8%	1.1%	7.4%	0.8%	11.8%	0.9%	7.5%	0.8%
Legislative District 13	137,266	2,008	36.2	0.5	10.4%	0.4%	21.4%	1.0%	7.9%	0.7%	6.4%	0.7%	6.8%	0.8%
Legislative District 14	131,027	2,072	41.7	0.8	16.6%	0.5%	26.5%	1.0%	9.4%	0.7%	9.9%	0.7%	5.3%	0.7%
Legislative District 15	126,120	1,770	41.5	0.6	14.0%	0.5%	29.8%	1.1%	11.8%	0.8%	6.5%	0.7%	5.2%	0.7%
Legislative District 16	126,318	1,630	44.4	0.5	20.2%	0.5%	24.1%	0.9%	6.3%	0.6%	13.1%	0.7%	2.7%	0.4%
Legislative District 17	141,731	650	36.8	0.5	13.3%	0.5%	37.3%	1.2%	19.3%	1.1%	9.6%	0.7%	6.6%	0.7%
Legislative District 18	126,981	2,017	38.4	0.7	14.0%	0.4%	32.4%	1.0%	15.3%	0.8%	10.2%	0.7%	5.2%	0.7%
Legislative District 19	129,974	2,114	41.3	0.7	18.5%	0.6%	36.2%	1.2%	16.6%	1.1%	14.0%	0.9%	5.3%	0.8%
Legislative District 20	127,764	2,217	35.8	0.4	11.3%	0.5%	35.2%	1.3%	16.3%	1.0%	8.5%	0.8%	6.1%	0.7%
Legislative District 21	136,818	2,091	32.8	0.5	10.8%	0.4%	26.5%	1.2%	13.0%	0.8%	9.1%	0.9%	5.2%	0.7%
Legislative District 22	132,534	2,232	34.5	0.5	10.1%	0.4%	35.4%	1.1%	18.5%	1.1%	8.5%	0.7%	9.1%	0.8%
Legislative Subdistrict 23A	40,550	1,333	38.0	1.0	10.2%	0.8%	22.4%	2.0%	6.9%	1.1%	5.6%	1.1%	7.3%	1.5%
Legislative Subdistrict 23B	84,744	1,342	42.7	0.8	15.1%	0.7%	11.4%	1.1%	3.0%	0.5%	9.8%	0.8%	6.0%	0.9%
Legislative District 24	123,339	2,672	38.6	0.7	13.6%	0.6%	14.5%	1.0%	5.4%	0.7%	9.3%	0.9%	10.6%	1.1%
Legislative District 25	118,584	2,220	37.6	0.9	12.9%	0.6%	10.1%	1.1%	3.8%	0.9%	8.7%	0.7%	10.5%	1.1%
Legislative District 26	122,380	2,660	40.4	0.8	15.5%	0.5%	13.9%	1.1%	7.0%	0.9%	9.3%	0.8%	7.6%	1.0%
Legislative Subdistrict 27A	48,091	1,709	41.0	1.5	12.7%	0.9%	8.3%	1.5%	2.8%	0.9%	4.9%	1.0%	7.8%	1.6%
Legislative Subdistrict 27B	43,836	1,204	43.2	1.0	14.8%	0.8%	4.2%	0.9%	1.9%	0.7%	5.7%	1.1%	4.3%	1.0%
Legislative Subdistrict 27C	45,623	1,067	39.8	0.8	12.8%	0.6%	3.1%	0.6%	1.2%	0.4%	9.5%	1.2%	6.7%	1.3%

Source: U.S. Census Bureau, 2014-2018 American Community Survey 5-Year Estimates

Prepared by the Maryland Department of Planning, December 2019

*MoE: Margin of Error

2014-2018 American Community Survey 5-Year Estimates for Maryland Legislative Districts (House of Delegates)

Jurisdictions	Total	MoE*	Median	MoE*	Percent Age 65	MoE*	Percent Foreign	MoE*	Percent Speak English	MoE*	Percent Age 65 &	MoE*	Percent Single Female	
	Population	+/-	Age	+/-	& Over	+/-	Born	+/-	"Less than Very Well"	+/-	Over Living Alone	+/-	Household with own	MoE*
													Children under 18	+/-
Legislative District 28	139156	1144	37.9	0.4	11.6%	0.2%	5.9%	0.6%	2.4%	0.4%	7.0%	0.6%	9.1%	0.9%
Legislative Subdistrict 29A	43,998	1,237	41.2	1.0	15.5%	0.8%	2.7%	0.6%	1.6%	0.6%	8.7%	1.3%	5.2%	1.5%
Legislative Subdistrict 29B	44,520	1,322	32.3	0.9	9.0%	0.6%	7.0%	1.1%	3.1%	0.7%	7.2%	1.4%	8.5%	1.7%
Legislative Subdistrict 29C	43,407	1,364	40.4	1.0	13.8%	0.9%	3.7%	0.8%	1.4%	0.6%	8.3%	1.0%	6.2%	1.4%
Legislative Subdistrict 30A	83,804	1,267	39.2	1.0	18.7%	0.8%	10.1%	1.1%	6.1%	0.9%	13.0%	1.3%	5.1%	1.0%
Legislative Subdistrict 30B	41,726	1,352	43.8	1.6	16.7%	1.0%	3.4%	0.8%	1.6%	0.7%	9.4%	1.2%	4.5%	1.3%
Legislative Subdistrict 31A	45174	1504	37.5	1	14.0%	0.8%	10.0%	1.6%	6.1%	1.4%	12.6%	1.5%	7.5%	1.6%
Legislative Subdistrict 31B	87,815	1,713	39.8	1.0	13.9%	0.7%	4.8%	0.6%	1.9%	0.4%	7.4%	0.9%	3.7%	0.8%
Legislative District 32	145,276	2,018	34.2	0.5	9.6%	0.4%	11.8%	0.9%	5.5%	0.7%	6.0%	0.6%	7.6%	0.9%
Legislative District 33	135,068	1,875	41.4	0.5	15.6%	0.5%	6.4%	0.6%	1.9%	0.4%	9.0%	0.8%	4.2%	0.7%
Legislative Subdistrict 34A	82,704	1,046	36.7	0.7	12.6%	0.5%	7.4%	1.0%	2.9%	0.8%	9.5%	1.0%	8.6%	1.0%
Legislative Subdistrict 34B	42,075	991	41.2	0.8	16.2%	0.9%	6.5%	1.0%	2.6%	0.9%	11.3%	1.4%	4.7%	1.1%
Legislative Subdistrict 35A	44128	1088	38.8	1.1	14.9%	0.9%	3.2%	0.8%	1.3%	0.5%	10.4%	1.6%	5.6%	1.2%
Legislative Subdistrict 35B	85,052	1,495	42.7	0.8	15.8%	0.6%	3.4%	0.5%	1.3%	0.3%	9.2%	1.1%	3.8%	0.8%
Legislative District 36	129,894	1,053	42.8	0.4	18.0%	0.3%	4.3%	0.4%	2.7%	0.3%	11.2%	0.8%	5.7%	0.6%
Legislative Subdistrict 37A	42,181	1,440	34.1	1.3	14.0%	1.0%	10.9%	1.9%	8.7%	1.7%	12.6%	1.2%	14.7%	2.0%
Legislative Subdistrict 37B	85,233	1,320	48.0	0.7	23.1%	0.6%	4.9%	0.5%	2.6%	0.4%	12.2%	1.0%	5.6%	0.7%
Legislative Subdistrict 38A	43,996	502	39.5	0.6	18.0%	0.6%	4.6%	0.9%	2.2%	0.6%	13.9%	1.4%	9.7%	1.4%
Legislative Subdistrict 38B	43769	1372	32.9	1.4	15.6%	1.0%	7.9%	1.2%	4.7%	0.9%	12.3%	1.9%	6.5%	1.8%
Legislative Subdistrict 38C	41,999	848	51.0	1.0	26.9%	0.8%	4.8%	0.8%	1.9%	0.6%	15.4%	1.4%	3.4%	0.8%
Legislative District 39	130,218	2,003	35.0	0.5	8.9%	0.4%	36.4%	1.5%	16.9%	1.1%	5.0%	0.6%	9.1%	1.2%
Legislative District 40	110,341	2,759	34.7	0.7	13.2%	0.6%	7.1%	0.9%	3.0%	0.6%	13.9%	1.0%	10.7%	1.0%
Legislative District 41	116,245	2,108	39.6	0.9	18.9%	0.6%	7.5%	0.8%	1.9%	0.3%	16.3%	1.0%	8.9%	1.0%
Legislative Subdistrict 42A	44,106	990	32.1	1.1	16.1%	0.9%	11.5%	1.4%	3.3%	0.9%	16.9%	1.6%	4.3%	1.1%
Legislative Subdistrict 42B	82607	1613	44.6	0.7	20.1%	0.8%	8.2%	0.7%	2.9%	0.5%	12.3%	1.0%	4.3%	0.8%
Legislative District 43	118,068	2,190	36.0	0.7	13.9%	0.6%	8.3%	0.7%	3.1%	0.6%	12.6%	0.7%	7.8%	0.9%
Legislative Subdistrict 44A	38,363	1,748	34.0	2.0	13.1%	0.9%	3.2%	1.0%	1.5%	0.8%	12.9%	1.5%	18.2%	2.0%
Legislative Subdistrict 44B	79,067	1,830	40.6	1.0	15.4%	0.7%	15.6%	1.4%	6.8%	1.1%	9.5%	0.9%	7.7%	1.2%
Legislative District 45	114,883	2,424	35.8	0.9	11.1%	0.5%	6.8%	1.0%	3.5%	0.7%	9.7%	0.8%	13.6%	1.1%
Legislative District 46	116,800	2,095	32.5	0.3	8.7%	0.3%	12.4%	0.7%	7.2%	0.7%	9.1%	0.6%	8.3%	0.6%
Legislative Subdistrict 47A	86002	1644	34.8	0.6	11.1%	0.6%	34.3%	1.6%	21.0%	1.6%	8.6%	0.8%	9.2%	1.0%
Legislative Subdistrict 47B	41,737	1,452	31.2	0.8	7.1%	0.7%	57.8%	1.7%	50.0%	2.0%	5.0%	1.1%	8.8%	1.7%

Source: U.S. Census Bureau, 2014-2018 American Community Survey 5-Year Estimates

Prepared by the Maryland Department of Planning, December 2019

*MoE: Margin of Error

Social and Economic Characteristics

From the 2014-2018 American Community Survey 5-Year Estimates

2014-2018 American Community Survey 5-Year Estimates for Maryland Legislative Districts (House of Delegates)

Jurisdictions	Pct. Population Ages 25+ w/ less than High School Degree		Pct. Population Ages 25+ w/ Bachelor's Degree or higher		Median Household Income		Percent of Persons Below Poverty Level		Pct Population with No Health Insurance		Percent Unemployed		Percent Receiving SNAP Benefits		Percent with a Disability	
	MoE* +/-		MoE* +/-		MoE* +/-		MoE* +/-		MoE* +/-		MoE* +/-		MoE* +/-		MoE* +/-	
Legislative Subdistrict 1A	7.1%	0.8%	18.7%	1.4%	\$48,533	\$1,533	11.1%	1.3%	6.4%	1.0%	3.1%	0.4%	16.9%	1.5%	17.6%	1.3%
Legislative Subdistrict 1B	7.4%	0.9%	19.8%	1.3%	\$45,986	\$2,080	15.3%	1.7%	3.8%	0.8%	3.7%	0.6%	16.1%	2.1%	16.2%	1.2%
Legislative Subdistrict 1C	9.2%	1.2%	15.9%	1.3%	\$47,493	\$2,469	15.4%	2.1%	7.4%	1.3%	4.8%	1.1%	19.0%	1.8%	19.4%	1.6%
Legislative Subdistrict 2A	8.4%	0.7%	24.8%	1.1%	\$71,479	\$2,397	6.2%	1.0%	4.8%	0.8%	3.0%	0.5%	7.9%	0.9%	13.8%	0.9%
Legislative Subdistrict 2B	12.5%	1.4%	16.8%	1.3%	\$41,032	\$2,014	26.6%	2.8%	8.3%	1.6%	5.9%	1.1%	31.0%	2.7%	19.2%	1.4%
Legislative Subdistrict 3A	4.9%	0.7%	41.2%	1.4%	\$76,214	\$2,657	10.7%	1.4%	6.6%	1.1%	3.6%	0.5%	9.2%	1.3%	12.4%	1.0%
Legislative Subdistrict 3B	3.0%	0.5%	45.0%	2.0%	\$100,444	\$4,120	4.4%	1.1%	4.4%	1.0%	2.9%	0.5%	4.8%	1.1%	9.4%	0.7%
Legislative District 4	4.9%	0.5%	38.6%	1.1%	\$104,679	\$2,096	5.6%	0.7%	3.6%	0.4%	3.1%	0.3%	5.8%	0.7%	10.5%	0.5%
Legislative District 5	6.0%	0.5%	33.3%	1.2%	\$89,484	\$1,748	5.7%	0.7%	3.2%	0.5%	2.4%	0.3%	7.4%	0.9%	11.6%	0.7%
Legislative District 6	12.2%	0.9%	14.3%	0.9%	\$54,711	\$1,694	14.0%	1.3%	8.0%	0.9%	4.5%	0.5%	20.1%	1.3%	17.2%	0.7%
Legislative District 7	4.9%	0.5%	35.8%	1.1%	\$90,630	\$2,419	6.1%	0.9%	3.5%	0.5%	3.3%	0.4%	6.4%	0.8%	10.9%	0.6%
Legislative District 8	5.2%	0.5%	33.7%	1.2%	\$70,672	\$2,800	7.9%	1.0%	5.7%	0.6%	3.4%	0.4%	8.8%	0.9%	11.5%	0.6%
Legislative Subdistrict 9A	2.9%	0.5%	58.7%	1.5%	\$139,107	\$3,961	3.2%	0.7%	2.4%	0.6%	2.1%	0.4%	2.4%	0.6%	8.2%	0.6%
Legislative Subdistrict 9B	2.7%	0.7%	67.0%	2.3%	\$127,051	\$8,106	4.6%	1.1%	3.0%	0.8%	2.5%	0.6%	4.3%	1.4%	6.7%	0.8%
Legislative District 10	4.3%	0.6%	38.6%	1.5%	\$79,911	\$3,054	9.2%	1.1%	5.6%	0.8%	3.8%	0.5%	10.4%	1.0%	10.5%	0.7%
Legislative District 11	2.9%	0.6%	57.6%	1.3%	\$82,819	\$2,656	7.5%	0.9%	5.5%	0.7%	2.9%	0.5%	7.1%	0.7%	9.7%	0.6%
Legislative District 12	4.6%	0.6%	48.1%	1.3%	\$87,484	\$2,595	10.3%	1.4%	5.6%	0.7%	3.3%	0.4%	10.0%	1.1%	10.2%	0.7%
Legislative District 13	2.5%	0.4%	57.9%	1.1%	\$111,611	\$2,506	5.7%	0.8%	4.4%	0.6%	3.0%	0.4%	5.5%	0.9%	7.5%	0.5%
Legislative District 14	3.2%	0.5%	54.0%	1.2%	\$113,087	\$2,671	5.1%	0.8%	5.1%	0.6%	3.3%	0.4%	5.5%	0.8%	8.9%	0.7%
Legislative District 15	2.3%	0.5%	68.5%	1.2%	\$140,709	\$4,691	3.6%	0.6%	3.2%	0.4%	2.5%	0.4%	3.7%	0.7%	7.0%	0.5%
Legislative District 16	0.9%	0.2%	83.2%	0.8%	\$153,551	\$5,449	3.5%	0.5%	2.0%	0.3%	2.3%	0.3%	1.2%	0.3%	7.4%	0.5%
Legislative District 17	4.3%	0.5%	58.2%	1.3%	\$93,013	\$2,509	8.3%	0.9%	9.4%	0.9%	3.6%	0.4%	8.0%	0.9%	8.1%	0.5%
Legislative District 18	4.8%	0.6%	57.1%	1.2%	\$101,757	\$2,804	7.7%	1.2%	9.1%	0.8%	3.9%	0.4%	6.6%	0.9%	7.8%	0.5%
Legislative District 19	4.5%	0.5%	48.6%	1.3%	\$91,529	\$2,835	8.2%	1.2%	10.9%	1.0%	3.8%	0.5%	8.1%	1.0%	9.9%	0.6%
Legislative District 20	5.7%	0.7%	54.1%	1.4%	\$84,949	\$2,728	9.5%	1.0%	10.6%	1.0%	4.8%	0.5%	8.3%	0.9%	7.5%	0.6%
Legislative District 21	6.2%	0.7%	42.5%	1.4%	\$83,436	\$2,445	11.1%	1.0%	9.1%	0.7%	3.4%	0.4%	7.1%	0.9%	7.7%	0.5%
Legislative District 22	7.7%	0.7%	33.0%	1.1%	\$71,189	\$1,920	10.1%	0.8%	15.4%	0.9%	4.7%	0.5%	10.2%	0.8%	8.8%	0.5%
Legislative Subdistrict 23A	3.9%	0.8%	49.5%	2.4%	\$101,259	\$4,430	3.5%	1.1%	5.6%	1.1%	4.1%	0.9%	5.4%	1.6%	7.5%	1.1%
Legislative Subdistrict 23B	3.1%	0.5%	46.5%	1.5%	\$108,793	\$3,368	4.3%	0.7%	3.9%	0.6%	3.7%	0.5%	4.8%	0.8%	10.1%	0.8%
Legislative District 24	5.9%	0.7%	31.8%	1.1%	\$78,975	\$2,744	8.7%	0.9%	8.2%	0.7%	5.5%	0.5%	12.6%	1.1%	10.4%	0.7%
Legislative District 25	6.3%	0.7%	27.4%	1.1%	\$81,772	\$2,338	7.7%	1.1%	6.7%	0.8%	5.5%	0.5%	11.2%	1.1%	10.8%	0.8%
Legislative District 26	5.9%	0.7%	29.1%	1.3%	\$84,998	\$2,334	8.5%	1.2%	9.0%	0.9%	5.5%	0.5%	10.5%	0.9%	10.9%	0.7%
Legislative Subdistrict 27A	4.4%	0.8%	29.9%	1.7%	\$113,160	\$4,098	4.3%	1.0%	3.8%	0.8%	3.1%	0.6%	4.9%	0.9%	10.1%	1.0%
Legislative Subdistrict 27B	3.8%	0.9%	35.9%	1.6%	\$125,318	\$4,272	3.3%	0.9%	5.0%	1.2%	4.2%	0.8%	5.2%	1.1%	9.8%	1.0%
Legislative Subdistrict 27C	5.3%	0.9%	27.4%	2.0%	\$101,631	\$4,017	5.5%	1.1%	4.4%	0.9%	4.1%	0.8%	8.6%	1.7%	11.4%	1.1%

Source: U.S. Census Bureau, 2014-2018 American Community Survey 5-Year Estimates

Prepared by the Maryland Department of Planning, December 2019

*MoE: Margin of Error

2014-2018 American Community Survey 5-Year Estimates for Maryland Legislative Districts (House of Delegates)

Jurisdictions	Pct. Population Ages 25+ w/ less than High School Degree		Pct. Population Ages 25+ w/ Bachelor's Degree or higher		Median Household Income		Percent of Persons Below Poverty Level		Pct Population with No Health Insurance		Percent Unemployed		Percent Receiving SNAP Benefits		Percent with a Disability	
	MoE*	+/-	MoE*	+/-	MoE*	+/-	MoE*	+/-	MoE*	+/-	MoE*	+/-	MoE*	+/-	MoE*	+/-
Legislative District 28	4.7%	0.5%	29.5%	1.0%	\$94,645	\$2,638	6.1%	0.8%	3.7%	0.5%	2.8%	0.4%	8.7%	0.9%	8.8%	0.6%
Legislative Subdistrict 29A	6.9%	1.0%	24.0%	1.8%	\$94,913	\$4,220	6.9%	1.6%	6.9%	1.7%	1.8%	0.5%	7.2%	1.5%	13.4%	1.6%
Legislative Subdistrict 29B	8.2%	1.5%	31.4%	2.2%	\$75,643	\$4,222	13.0%	2.6%	6.3%	1.4%	3.1%	0.8%	14.1%	2.0%	12.3%	1.5%
Legislative Subdistrict 29C	4.0%	0.8%	38.7%	2.3%	\$99,938	\$4,606	4.5%	1.3%	3.8%	1.2%	3.8%	1.0%	6.4%	1.5%	11.3%	1.2%
Legislative Subdistrict 30A	5.0%	0.9%	52.3%	1.5%	\$97,268	\$3,316	7.2%	0.9%	7.1%	1.2%	2.9%	0.6%	7.8%	1.2%	11.3%	1.0%
Legislative Subdistrict 30B	5.0%	0.9%	36.2%	2.2%	\$100,270	\$3,680	6.8%	1.7%	3.7%	0.9%	3.1%	0.7%	5.9%	1.3%	12.1%	1.4%
Legislative Subdistrict 31A	11.1%	1.4%	15.8%	1.6%	\$61,306	\$3,893	12.2%	2.0%	7.6%	1.4%	4.5%	0.8%	17.4%	2.1%	16.0%	1.6%
Legislative Subdistrict 31B	6.3%	0.8%	30.2%	1.6%	\$98,786	\$3,346	4.6%	0.9%	3.8%	0.7%	2.7%	0.4%	5.9%	1.1%	10.6%	0.9%
Legislative District 32	6.8%	0.7%	34.8%	1.2%	\$86,759	\$2,219	6.7%	0.9%	5.5%	0.7%	3.6%	0.4%	6.8%	0.8%	10.3%	0.6%
Legislative District 33	2.7%	0.3%	55.9%	1.2%	\$127,959	\$2,814	3.7%	0.6%	2.5%	0.4%	2.7%	0.4%	2.1%	0.4%	8.4%	0.5%
Legislative Subdistrict 34A	6.0%	0.8%	29.0%	1.4%	\$69,155	\$2,759	11.6%	1.1%	4.6%	0.7%	4.0%	0.5%	14.8%	1.2%	13.9%	1.0%
Legislative Subdistrict 34B	2.6%	0.7%	43.3%	1.9%	\$93,743	\$4,830	5.3%	1.1%	3.4%	0.8%	2.2%	0.5%	5.0%	1.2%	9.5%	0.9%
Legislative Subdistrict 35A	7.8%	1.3%	23.3%	1.7%	\$70,320	\$3,053	9.2%	1.9%	4.3%	0.8%	3.6%	0.8%	12.2%	1.9%	13.7%	1.3%
Legislative Subdistrict 35B	6.1%	0.8%	32.2%	1.2%	\$91,775	\$3,084	6.3%	1.1%	3.2%	0.5%	3.4%	0.5%	5.8%	0.9%	11.5%	0.8%
Legislative District 36	7.5%	0.5%	28.5%	0.9%	\$73,150	\$2,186	9.8%	0.9%	5.3%	0.5%	2.6%	0.3%	11.4%	1.0%	12.6%	0.6%
Legislative Subdistrict 37A	11.9%	1.6%	14.9%	1.4%	\$40,669	\$2,316	22.9%	2.6%	9.2%	1.5%	6.5%	1.1%	33.5%	2.4%	13.6%	1.3%
Legislative Subdistrict 37B	6.4%	0.6%	32.5%	1.2%	\$67,322	\$3,080	8.5%	0.8%	4.9%	0.6%	3.0%	0.5%	12.0%	1.0%	13.9%	0.7%
Legislative Subdistrict 38A	11.0%	1.2%	19.4%	1.5%	\$45,577	\$2,534	17.7%	2.1%	6.1%	1.0%	3.9%	0.8%	21.3%	2.2%	15.5%	1.1%
Legislative Subdistrict 38B	7.2%	1.4%	32.2%	1.9%	\$55,320	\$3,835	17.6%	2.3%	5.6%	1.1%	4.5%	1.0%	12.6%	1.9%	11.7%	1.3%
Legislative Subdistrict 38C	6.9%	1.1%	29.8%	1.8%	\$64,748	\$2,980	7.3%	1.1%	6.1%	1.0%	3.1%	0.5%	7.8%	1.2%	14.2%	1.1%
Legislative District 39	4.4%	0.5%	48.1%	1.6%	\$92,966	\$3,126	9.0%	1.2%	8.7%	0.8%	3.6%	0.4%	10.1%	1.1%	7.4%	0.6%
Legislative District 40	13.6%	0.9%	26.9%	1.0%	\$36,948	\$1,494	27.8%	1.6%	7.4%	0.8%	5.8%	0.6%	30.8%	1.4%	18.7%	0.8%
Legislative District 41	8.0%	0.7%	31.6%	1.1%	\$50,336	\$1,841	18.2%	1.4%	6.6%	0.8%	5.6%	0.6%	21.3%	1.5%	15.5%	0.8%
Legislative Subdistrict 42A	1.7%	0.6%	65.9%	1.9%	\$81,695	\$4,328	12.1%	1.6%	3.5%	1.0%	2.8%	0.5%	4.6%	1.0%	8.5%	0.7%
Legislative Subdistrict 42B	3.3%	0.5%	51.9%	1.4%	\$97,045	\$4,359	4.9%	0.7%	3.2%	0.6%	2.0%	0.3%	3.3%	0.6%	9.1%	0.6%
Legislative District 43	8.0%	0.8%	35.8%	1.3%	\$52,726	\$1,156	17.6%	1.4%	6.4%	0.6%	6.1%	0.7%	19.0%	1.1%	12.9%	0.8%
Legislative Subdistrict 44A	16.0%	1.6%	11.6%	1.6%	\$34,636	\$2,383	29.9%	2.9%	5.9%	1.2%	6.8%	1.0%	35.9%	2.2%	20.3%	1.6%
Legislative Subdistrict 44B	5.6%	0.8%	36.2%	1.7%	\$69,567	\$2,093	8.6%	1.1%	7.0%	1.0%	4.0%	0.5%	10.5%	1.2%	12.0%	0.9%
Legislative District 45	10.6%	0.9%	22.6%	1.1%	\$45,154	\$1,881	21.9%	1.7%	6.9%	1.0%	6.4%	0.7%	29.0%	1.3%	14.3%	0.9%
Legislative District 46	10.5%	0.9%	44.1%	1.0%	\$68,122	\$2,435	20.7%	1.2%	9.2%	0.9%	3.8%	0.5%	18.9%	1.1%	12.6%	0.8%
Legislative Subdistrict 47A	10.7%	1.0%	21.2%	1.3%	\$59,325	\$2,242	10.5%	1.1%	17.2%	1.4%	5.4%	0.7%	14.6%	1.1%	9.0%	0.7%
Legislative Subdistrict 47B	10.7%	1.4%	17.1%	1.7%	\$63,657	\$3,114	16.6%	2.1%	34.1%	2.1%	4.1%	0.8%	10.6%	1.7%	4.9%	0.6%

Housing Characteristics

From the 2014-2018 American Community Survey 5-Year Estimates

2014-2018 American Community Survey 5-Year Estimates for Maryland Legislative Districts (House of Delegates)

Jurisdictions	Total Housing Units	MoE* +/-	Percent Owner		Median Home Value	MoE* +/-	Pct. of Owners Spending 35%+ or more of Income on Housing ^		Median Gross Rent	MoE* +/-	Pct. Renters Spending 35%+ or more of Income on Rent		MoE* +/-
			Occupied Housing Units	MoE* +/-									
Legislative Subdistrict 1A	24,270	201	77.4%	1.8%	\$152,900	\$4,342	23.1%	3.2%	\$642	\$41	34.9%	5.1%	
Legislative Subdistrict 1B	17,678	368	69.8%	1.9%	\$128,800	\$6,464	17.5%	2.5%	\$724	\$43	44.6%	4.6%	
Legislative Subdistrict 1C	18,168	437	66.5%	2.1%	\$155,400	\$6,257	20.5%	3.7%	\$715	\$33	35.0%	4.3%	
Legislative Subdistrict 2A	34,917	481	77.5%	1.5%	\$231,100	\$4,836	18.1%	1.9%	\$998	\$47	32.3%	3.7%	
Legislative Subdistrict 2B	18,605	480	39.0%	2.4%	\$152,200	\$3,956	25.0%	4.4%	\$830	\$44	40.1%	3.3%	
Legislative Subdistrict 3A	34,500	582	60.5%	1.8%	\$280,100	\$4,975	19.9%	2.0%	\$1,368	\$33	43.8%	2.9%	
Legislative Subdistrict 3B	17,228	297	76.0%	1.7%	\$335,900	\$8,065	18.3%	2.4%	\$1,610	\$62	34.1%	5.9%	
Legislative District 4	48,855	575	85.7%	1.0%	\$353,200	\$4,032	18.1%	1.2%	\$1,308	\$59	37.1%	4.2%	
Legislative District 5	48,721	302	81.1%	1.1%	\$318,800	\$4,453	18.2%	1.3%	\$1,123	\$44	43.8%	4.6%	
Legislative District 6	50,595	347	61.5%	1.3%	\$163,900	\$2,728	22.8%	1.8%	\$1,095	\$22	46.2%	3.0%	
Legislative District 7	51,071	547	82.6%	1.1%	\$327,800	\$4,929	19.7%	1.4%	\$1,193	\$27	37.9%	4.6%	
Legislative District 8	53,024	230	64.1%	1.2%	\$225,700	\$2,097	18.3%	1.5%	\$1,293	\$24	39.7%	3.2%	
Legislative Subdistrict 9A	31,951	360	89.5%	1.0%	\$538,000	\$9,492	18.2%	1.8%	\$1,475	\$78	37.7%	5.7%	
Legislative Subdistrict 9B	16,886	295	72.0%	1.7%	\$530,100	\$9,977	14.5%	2.1%	\$1,567	\$65	39.9%	5.3%	
Legislative District 10	48,212	604	64.1%	1.3%	\$241,900	\$3,550	20.1%	1.8%	\$1,300	\$25	37.2%	3.5%	
Legislative District 11	53,868	441	60.0%	1.1%	\$344,300	\$6,865	20.9%	1.9%	\$1,368	\$22	37.0%	2.9%	
Legislative District 12	49,976	474	62.9%	1.3%	\$316,100	\$6,446	18.6%	1.7%	\$1,526	\$44	40.6%	3.1%	
Legislative District 13	50,838	353	71.8%	1.1%	\$378,700	\$4,438	16.0%	1.5%	\$1,711	\$28	34.9%	3.3%	
Legislative District 14	46,198	389	77.8%	1.1%	\$443,100	\$5,287	20.2%	1.4%	\$1,786	\$42	47.8%	4.1%	
Legislative District 15	44,360	367	81.0%	1.2%	\$615,000	\$8,338	18.7%	1.5%	\$1,820	\$39	39.0%	4.7%	
Legislative District 16	54,030	411	67.6%	1.1%	\$878,100	\$9,517	19.0%	1.4%	\$2,090	\$40	34.2%	2.2%	
Legislative District 17	55,256	748	51.6%	1.3%	\$456,600	\$9,059	21.8%	1.9%	\$1,763	\$22	40.5%	2.3%	
Legislative District 18	47,185	425	63.9%	1.4%	\$466,300	\$6,717	21.0%	1.6%	\$1,767	\$23	40.7%	3.2%	
Legislative District 19	46,571	407	73.7%	1.0%	\$414,400	\$5,126	24.4%	1.7%	\$1,704	\$31	45.5%	3.5%	
Legislative District 20	50,115	570	44.2%	1.0%	\$455,600	\$6,537	18.7%	1.8%	\$1,576	\$24	40.6%	2.3%	
Legislative District 21	47,225	689	58.3%	1.4%	\$319,200	\$4,772	21.2%	1.9%	\$1,554	\$38	40.9%	2.6%	
Legislative District 22	46,658	717	52.6%	1.2%	\$262,600	\$6,185	28.7%	1.9%	\$1,461	\$22	40.5%	2.5%	
Legislative Subdistrict 23A	14,701	238	64.9%	2.3%	\$347,200	\$6,033	19.3%	3.0%	\$1,475	\$32	37.6%	5.3%	
Legislative Subdistrict 23B	32,476	569	82.2%	1.4%	\$328,300	\$4,656	22.3%	1.6%	\$1,830	\$37	39.7%	5.0%	
Legislative District 24	48,862	635	61.4%	1.2%	\$278,500	\$3,766	26.0%	1.9%	\$1,417	\$19	40.6%	2.6%	
Legislative District 25	45,737	589	67.2%	1.2%	\$261,600	\$4,335	24.5%	1.8%	\$1,433	\$25	44.2%	3.1%	
Legislative District 26	47,613	413	66.0%	1.3%	\$285,000	\$3,855	23.5%	1.7%	\$1,377	\$24	40.1%	3.0%	
Legislative Subdistrict 27A	16,990	423	87.0%	1.9%	\$309,000	\$8,090	21.9%	2.8%	\$1,822	\$82	41.4%	8.7%	
Legislative Subdistrict 27B	15,197	276	92.5%	1.3%	\$392,500	\$9,139	19.3%	2.3%	\$1,831	\$447	29.7%	10.8%	
Legislative Subdistrict 27C	17,480	294	79.4%	2.0%	\$339,900	\$7,402	16.6%	2.1%	\$1,507	\$129	36.5%	6.2%	

Source: U.S. Census Bureau, 2014-2018 American Community Survey 5-Year Estimates

Prepared by the Maryland Department of Planning, December 2019

*MoE: Margin of Error, ^Homeowners with a mortgage

2014-2018 American Community Survey 5-Year Estimates for Maryland Legislative Districts (House of Delegates)

Jurisdictions	Total Housing Units	MoE* +/-	Percent Owner		Median Home Value	MoE* +/-	Pct. of Owners Spending 35%+ or more of Income on		Median Gross Rent	MoE* +/-	Pct. Renters Spending 35%+ or more of Income		MoE* +/-
			Occupied Housing Units	MoE* +/-			Housing ^	MoE* +/-			on Rent	MoE* +/-	
Legislative District 28	52,799	361	76.1%	1.3%	\$302,800	\$4,992	23.6%	1.5%	\$1,642	\$37	44.5%	3.9%	
Legislative Subdistrict 29A	16,483	385	84.1%	2.0%	\$307,400	\$10,347	18.4%	2.7%	\$1,286	\$129	34.7%	7.8%	
Legislative Subdistrict 29B	18,561	360	55.1%	2.8%	\$257,300	\$9,508	19.7%	3.9%	\$1,388	\$49	38.8%	5.4%	
Legislative Subdistrict 29C	18,320	453	78.8%	2.3%	\$284,800	\$9,087	18.0%	2.9%	\$1,471	\$90	33.0%	6.4%	
Legislative Subdistrict 30A	35,957	581	64.3%	1.6%	\$440,900	\$12,763	23.6%	2.3%	\$1,662	\$46	37.3%	3.5%	
Legislative Subdistrict 30B	17,201	343	87.0%	1.8%	\$397,500	\$12,547	21.8%	3.0%	\$1,648	\$147	48.8%	8.3%	
Legislative Subdistrict 31A	17,841	281	64.0%	2.7%	\$219,000	\$4,356	25.5%	3.6%	\$1,215	\$59	36.0%	5.2%	
Legislative Subdistrict 31B	34,127	385	86.4%	1.4%	\$330,400	\$5,476	18.8%	2.2%	\$1,591	\$77	34.8%	6.2%	
Legislative District 32	54,953	584	61.7%	1.3%	\$292,100	\$3,897	20.6%	1.9%	\$1,610	\$30	36.6%	2.7%	
Legislative District 33	50,538	515	86.8%	1.1%	\$463,500	\$6,272	16.1%	1.3%	\$1,814	\$50	32.8%	4.7%	
Legislative Subdistrict 34A	34,522	358	66.1%	1.4%	\$219,400	\$5,699	23.5%	2.3%	\$1,182	\$41	41.7%	3.1%	
Legislative Subdistrict 34B	17,406	389	79.5%	1.8%	\$270,800	\$5,213	14.0%	1.8%	\$1,207	\$46	40.3%	6.3%	
Legislative Subdistrict 35A	18,455	396	69.1%	2.3%	\$226,100	\$6,249	16.2%	2.3%	\$1,132	\$52	41.8%	6.8%	
Legislative Subdistrict 35B	31,608	415	87.0%	1.1%	\$299,500	\$6,444	18.3%	1.7%	\$1,242	\$65	39.4%	6.2%	
Legislative District 36	57,476	415	75.2%	1.2%	\$276,300	\$4,879	24.5%	1.8%	\$1,091	\$33	44.7%	3.0%	
Legislative Subdistrict 37A	18,574	590	38.2%	2.6%	\$135,500	\$5,876	25.8%	4.2%	\$912	\$30	42.1%	3.4%	
Legislative Subdistrict 37B	42,480	439	75.9%	1.3%	\$253,600	\$6,142	23.3%	1.8%	\$1,088	\$33	43.1%	3.9%	
Legislative Subdistrict 38A	19,733	398	65.9%	2.0%	\$161,200	\$5,405	26.8%	3.4%	\$767	\$53	54.7%	5.0%	
Legislative Subdistrict 38B	18,281	481	58.4%	2.5%	\$168,600	\$4,228	18.6%	3.7%	\$1,132	\$40	52.0%	4.4%	
Legislative Subdistrict 38C	51,530	289	79.5%	1.8%	\$261,600	\$7,086	29.6%	3.4%	\$1,133	\$47	39.6%	5.3%	
Legislative District 39	44,539	297	68.2%	1.3%	\$337,000	\$5,549	19.8%	1.7%	\$1,679	\$27	46.7%	3.0%	
Legislative District 40	59,998	608	36.0%	1.3%	\$122,400	\$6,163	27.6%	2.9%	\$989	\$27	45.0%	1.9%	
Legislative District 41	52,302	478	53.5%	1.3%	\$156,100	\$3,533	28.7%	2.7%	\$1,069	\$20	46.0%	2.8%	
Legislative Subdistrict 42A	17,205	255	55.5%	1.8%	\$335,500	\$7,744	12.6%	2.1%	\$1,404	\$32	44.5%	4.6%	
Legislative Subdistrict 42B	33,092	389	78.0%	1.2%	\$377,700	\$5,365	17.8%	1.9%	\$1,337	\$44	48.7%	3.7%	
Legislative District 43	51,847	403	52.6%	1.5%	\$164,900	\$2,854	26.4%	2.1%	\$1,072	\$20	42.0%	2.5%	
Legislative Subdistrict 44A	20,422	406	39.5%	2.6%	\$108,300	\$5,686	31.4%	5.4%	\$958	\$31	50.8%	3.5%	
Legislative Subdistrict 44B	32,170	461	68.9%	1.6%	\$226,700	\$3,872	20.5%	2.1%	\$1,221	\$30	42.6%	4.5%	
Legislative District 45	54,023	480	50.8%	1.4%	\$131,300	\$4,412	28.4%	2.4%	\$973	\$20	46.1%	2.6%	
Legislative District 46	55,930	555	46.5%	1.3%	\$243,500	\$6,227	18.9%	1.8%	\$1,263	\$35	34.7%	2.2%	
Legislative Subdistrict 47A	31,361	493	43.9%	1.3%	\$248,700	\$7,064	27.5%	2.6%	\$1,301	\$18	42.7%	2.8%	
Legislative Subdistrict 47B	11,989	224	38.3%	1.7%	\$257,300	\$9,421	33.5%	5.0%	\$1,421	\$22	42.7%	3.8%	

Source: U.S. Census Bureau, 2014-2018 American Community Survey 5-Year Estimates

Prepared by the Maryland Department of Planning, December 2019

*MoE: Margin of Error, ^Homeowners with a mortgage

Journey to Work Characteristics

From the 2014-2018 American Community Survey 5-Year Estimates

2014-2018 American Community Survey 5-Year Estimates for Maryland Legislative Districts (House of Delegates)

Jurisdictions	Mean Travel Time		Pct. Workers		Pct. Commuting on		Pct. Commuting		Pct. Workers Who		Pct. of House-Holds	
	to Work (Min.)	MoE* +/-	Commuting 60 min. or longer	MoE* +/-	Public Transit	MoE* +/-	by Carpool	MoE* +/-	Work At Home	MoE* +/-	With no Vehicle	MoE* +/-
Legislative Subdistrict 1A	24.7	1.2	7.2%	1.2%	0.3%	0.3%	10.2%	1.6%	4.3%	1.1%	7.1%	1.2%
Legislative Subdistrict 1B	20.5	1.0	6.3%	1.3%	0.5%	0.3%	8.9%	1.5%	1.8%	0.6%	8.5%	1.3%
Legislative Subdistrict 1C	25.2	1.1	9.8%	1.3%	0.5%	0.4%	9.9%	1.7%	4.1%	1.2%	9.3%	1.1%
Legislative Subdistrict 2A	31.0	0.9	14.7%	1.1%	1.1%	0.4%	9.0%	1.2%	5.3%	0.8%	4.6%	0.7%
Legislative Subdistrict 2B	27.2	1.3	12.9%	1.8%	3.9%	1.3%	12.4%	2.0%	3.2%	0.9%	16.9%	1.9%
Legislative Subdistrict 3A	31.8	0.9	20.9%	1.5%	3.5%	0.6%	10.3%	1.3%	5.1%	0.9%	6.9%	0.9%
Legislative Subdistrict 3B	37.2	1.3	24.7%	2.1%	3.5%	0.7%	9.5%	1.5%	6.1%	0.9%	2.6%	0.8%
Legislative District 4	37.4	0.7	22.8%	1.0%	1.8%	0.3%	7.7%	0.7%	7.1%	0.6%	2.8%	0.4%
Legislative District 5	35.5	0.7	20.5%	1.0%	0.6%	0.2%	7.2%	0.7%	5.5%	0.6%	4.9%	0.6%
Legislative District 6	29.1	0.7	9.0%	1.0%	5.8%	0.9%	11.4%	1.1%	2.6%	0.4%	12.1%	1.0%
Legislative District 7	33.4	0.6	13.2%	0.7%	1.4%	0.3%	7.5%	0.8%	4.7%	0.6%	3.6%	0.6%
Legislative District 8	29.3	0.6	7.7%	0.8%	2.3%	0.5%	8.0%	0.9%	2.3%	0.3%	7.8%	0.8%
Legislative Subdistrict 9A	34.8	0.7	12.9%	0.9%	1.7%	0.4%	7.2%	0.9%	7.3%	0.9%	2.4%	0.5%
Legislative Subdistrict 9B	30.1	0.9	10.6%	1.4%	2.3%	0.6%	7.2%	1.6%	7.1%	1.0%	4.2%	1.2%
Legislative District 10	33.0	0.7	11.7%	1.0%	7.1%	1.0%	9.3%	0.9%	3.6%	0.6%	6.3%	0.8%
Legislative District 11	28.8	0.8	8.6%	0.8%	6.5%	0.9%	8.2%	1.2%	5.2%	0.8%	7.1%	0.9%
Legislative District 12	28.6	0.7	10.8%	0.9%	5.1%	0.8%	8.6%	1.0%	4.2%	0.6%	8.3%	1.0%
Legislative District 13	30.6	0.7	13.3%	1.1%	4.5%	0.6%	6.8%	0.8%	4.7%	0.5%	3.1%	0.6%
Legislative District 14	36.6	0.6	18.3%	1.2%	7.7%	0.7%	10.0%	1.0%	6.2%	0.6%	4.9%	0.7%
Legislative District 15	35.6	0.6	19.3%	1.1%	7.8%	0.8%	9.5%	0.8%	7.9%	0.7%	3.2%	0.5%
Legislative District 16	30.7	0.5	8.9%	0.7%	17.1%	0.9%	6.2%	0.7%	10.1%	0.7%	8.0%	0.7%
Legislative District 17	32.5	0.5	17.3%	0.9%	14.9%	0.8%	10.4%	0.9%	5.2%	0.6%	9.0%	0.8%
Legislative District 18	33.6	0.5	13.2%	1.0%	21.4%	1.3%	8.5%	0.8%	6.2%	0.6%	8.0%	0.8%
Legislative District 19	35.6	0.6	19.1%	1.2%	15.4%	1.0%	11.9%	0.9%	4.7%	0.5%	6.7%	0.8%
Legislative District 20	35.8	0.6	16.2%	1.0%	24.8%	1.1%	9.9%	1.1%	4.7%	0.5%	14.6%	1.1%
Legislative District 21	32.3	0.7	14.7%	0.9%	10.0%	1.0%	8.1%	0.8%	2.8%	0.4%	6.3%	0.9%
Legislative District 22	35.3	0.7	17.1%	1.1%	16.9%	1.0%	11.5%	0.9%	2.9%	0.4%	10.4%	0.9%
Legislative Subdistrict 23A	35.1	1.0	17.1%	2.0%	6.8%	1.2%	10.5%	1.5%	5.6%	1.2%	2.7%	1.0%
Legislative Subdistrict 23B	38.6	0.7	24.0%	1.5%	10.4%	1.0%	7.3%	0.8%	4.9%	0.7%	3.6%	0.7%
Legislative District 24	36.9	0.7	20.0%	1.2%	19.2%	1.4%	9.3%	1.0%	2.9%	0.5%	10.5%	0.8%
Legislative District 25	37.7	0.7	21.6%	1.4%	15.9%	1.0%	10.5%	1.4%	3.0%	0.5%	7.7%	0.8%
Legislative District 26	39.4	0.8	23.1%	1.5%	15.3%	1.2%	11.3%	1.2%	3.1%	0.4%	8.3%	0.9%
Legislative Subdistrict 27A	45.2	1.3	32.3%	2.2%	9.3%	1.2%	7.4%	1.3%	2.7%	0.9%	2.2%	0.9%
Legislative Subdistrict 27B	41.1	1.0	27.4%	2.0%	5.9%	1.1%	8.8%	1.4%	4.4%	1.1%	1.5%	0.6%
Legislative Subdistrict 27C	41.9	1.4	32.2%	2.3%	2.9%	0.8%	9.0%	1.5%	5.3%	1.1%	4.2%	0.9%

Source: U.S. Census Bureau, 2014-2018 American Community Survey 5-Year Estimates

Prepared by the Maryland Department of Planning, December 2019

*MoE: Margin of Error

2014-2018 American Community Survey 5-Year Estimates for Maryland Legislative Districts (House of Delegates)

Jurisdictions	Mean Travel Time		Pct. Workers		Pct. Commuting on		Pct. Commuting		Pct. Workers Who		Pct. of House-Holds	
	to Work (Min.)	MoE*	Commuting 60 min. or	MoE*	Public Transit	MoE*	by Carpool	MoE*	Work At Home	MoE*	With no Vehicle	MoE*
		+/-	longer	+/-		+/-		+/-		+/-		+/-
Legislative District 28	44.2	0.9	34.4%	1.6%	5.7%	0.7%	7.2%	0.7%	4.1%	0.5%	3.6%	0.6%
Legislative Subdistrict 29A	39.1	1.4	23.4%	2.4%	3.1%	0.7%	9.4%	1.6%	3.0%	0.8%	4.6%	1.2%
Legislative Subdistrict 29B	24.9	1.8	10.1%	2.3%	1.0%	0.6%	10.5%	2.4%	3.1%	0.9%	5.7%	1.4%
Legislative Subdistrict 29C	34.3	1.7	17.6%	1.9%	1.9%	0.8%	7.1%	1.5%	2.7%	0.8%	2.8%	0.8%
Legislative Subdistrict 30A	28.0	1.0	13.2%	1.3%	3.2%	0.6%	6.0%	1.0%	10.4%	1.1%	6.1%	1.0%
Legislative Subdistrict 30B	37.1	1.1	22.0%	2.1%	2.9%	0.9%	5.8%	1.2%	5.4%	1.1%	2.7%	1.1%
Legislative Subdistrict 31A	26.5	1.1	6.7%	1.4%	5.1%	1.3%	9.9%	1.9%	0.7%	0.4%	8.9%	1.4%
Legislative Subdistrict 31B	32.0	0.9	11.2%	1.2%	1.2%	0.3%	7.9%	1.0%	4.4%	0.8%	2.2%	0.5%
Legislative District 32	28.7	0.7	11.6%	1.0%	4.0%	0.6%	9.3%	1.0%	3.3%	0.7%	4.5%	0.6%
Legislative District 33	33.1	0.7	16.1%	1.1%	3.2%	0.5%	7.0%	0.8%	6.8%	0.6%	1.5%	0.3%
Legislative Subdistrict 34A	28.7	1.0	10.8%	1.3%	2.3%	0.7%	10.2%	1.3%	2.7%	0.6%	7.3%	0.9%
Legislative Subdistrict 34B	31.1	0.8	12.5%	1.5%	1.1%	0.4%	7.3%	1.4%	5.5%	1.0%	5.6%	1.1%
Legislative Subdistrict 35A	28.8	1.3	9.7%	1.4%	1.2%	0.6%	9.1%	1.7%	3.8%	1.0%	6.2%	1.4%
Legislative Subdistrict 35B	33.1	0.8	15.5%	1.2%	0.9%	0.3%	7.5%	0.8%	5.5%	0.8%	3.5%	0.8%
Legislative District 36	32.9	0.9	17.2%	1.0%	1.5%	0.3%	9.2%	0.9%	6.7%	0.7%	6.3%	0.8%
Legislative Subdistrict 37A	23.2	1.1	7.2%	1.5%	1.4%	0.7%	15.3%	2.5%	2.4%	0.7%	17.2%	2.1%
Legislative Subdistrict 37B	27.2	1.0	11.8%	1.1%	0.9%	0.4%	9.3%	1.1%	5.2%	0.8%	4.0%	0.7%
Legislative Subdistrict 38A	25.6	1.3	6.3%	1.2%	1.6%	0.7%	8.4%	1.5%	3.9%	1.0%	10.3%	1.6%
Legislative Subdistrict 38B	20.1	1.2	5.4%	1.5%	0.8%	0.5%	8.1%	1.7%	2.6%	0.7%	7.3%	1.5%
Legislative Subdistrict 38C	24.6	1.5	6.6%	1.5%	1.7%	0.9%	6.5%	1.4%	5.4%	1.2%	4.7%	0.9%
Legislative District 39	36.5	0.8	21.3%	1.3%	11.0%	1.0%	11.7%	1.1%	4.5%	0.6%	5.5%	0.8%
Legislative District 40	31.1	1.0	13.3%	1.2%	24.6%	1.7%	6.3%	0.8%	4.2%	0.7%	40.4%	1.6%
Legislative District 41	31.4	0.8	13.1%	1.2%	16.0%	1.4%	10.2%	1.2%	5.2%	0.8%	23.6%	1.3%
Legislative Subdistrict 42A	26.0	1.0	7.9%	1.4%	4.8%	1.3%	6.6%	1.3%	6.8%	1.0%	10.0%	1.5%
Legislative Subdistrict 42B	29.2	0.7	9.7%	1.0%	1.7%	0.5%	6.5%	0.7%	6.6%	1.0%	3.6%	0.6%
Legislative District 43	30.5	0.9	12.4%	1.3%	17.7%	1.2%	9.4%	1.1%	4.6%	0.8%	24.5%	1.4%
Legislative Subdistrict 44A	30.9	1.7	12.4%	2.4%	23.6%	3.3%	11.5%	2.4%	3.1%	1.4%	39.6%	2.6%
Legislative Subdistrict 44B	29.4	0.9	8.6%	1.0%	6.3%	1.1%	9.2%	1.3%	3.5%	0.6%	6.8%	1.0%
Legislative District 45	33.7	0.9	16.0%	1.4%	19.6%	1.3%	8.8%	1.0%	3.1%	0.5%	30.2%	1.4%
Legislative District 46	28.9	0.6	10.2%	0.9%	11.8%	1.0%	9.3%	0.8%	4.1%	0.6%	22.4%	1.2%
Legislative Subdistrict 47A	36.8	0.9	19.8%	1.4%	23.9%	1.7%	11.4%	1.2%	1.6%	0.4%	16.3%	1.4%
Legislative Subdistrict 47B	37.6	1.1	20.7%	2.0%	19.1%	2.1%	25.6%	2.6%	1.7%	0.6%	15.3%	1.9%

Source: U.S. Census Bureau, 2014-2018 American Community Survey 5-Year Estimates

Prepared by the Maryland Department of Planning, December 2019

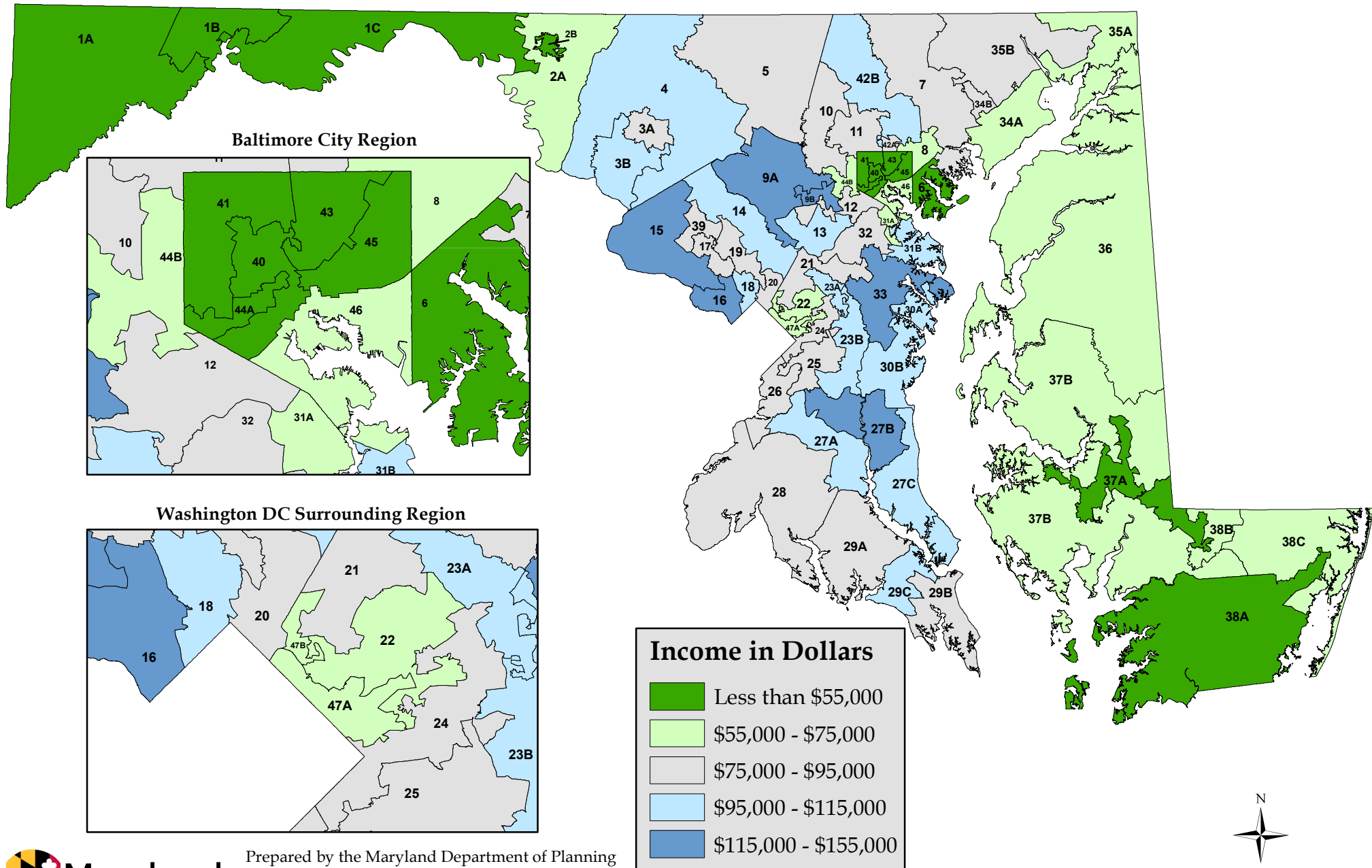
*MoE: Margin of Error

Legislative District Maps

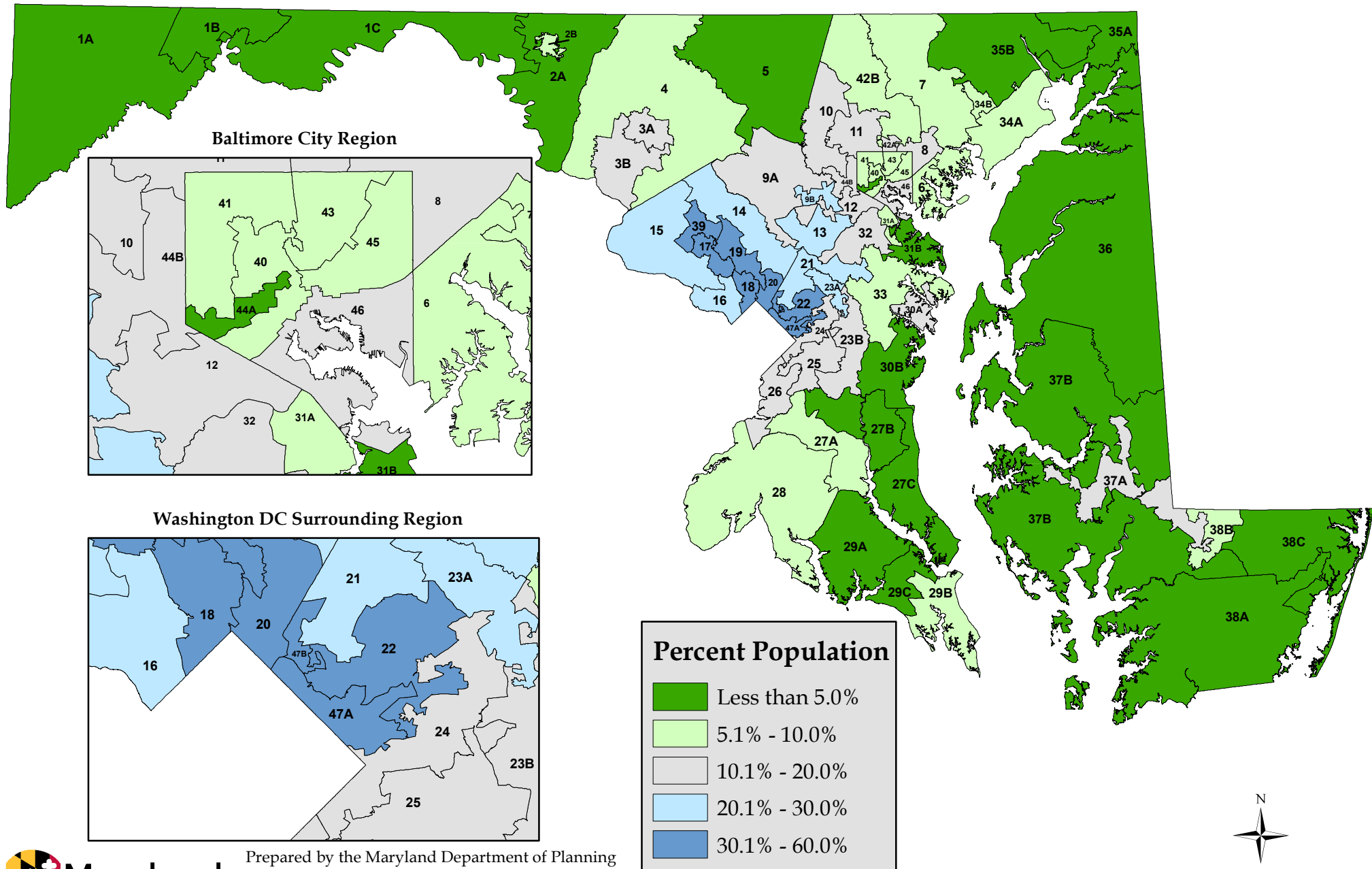
Displaying characteristics

From the 2014-2018 American Community Survey 5-Year Estimates

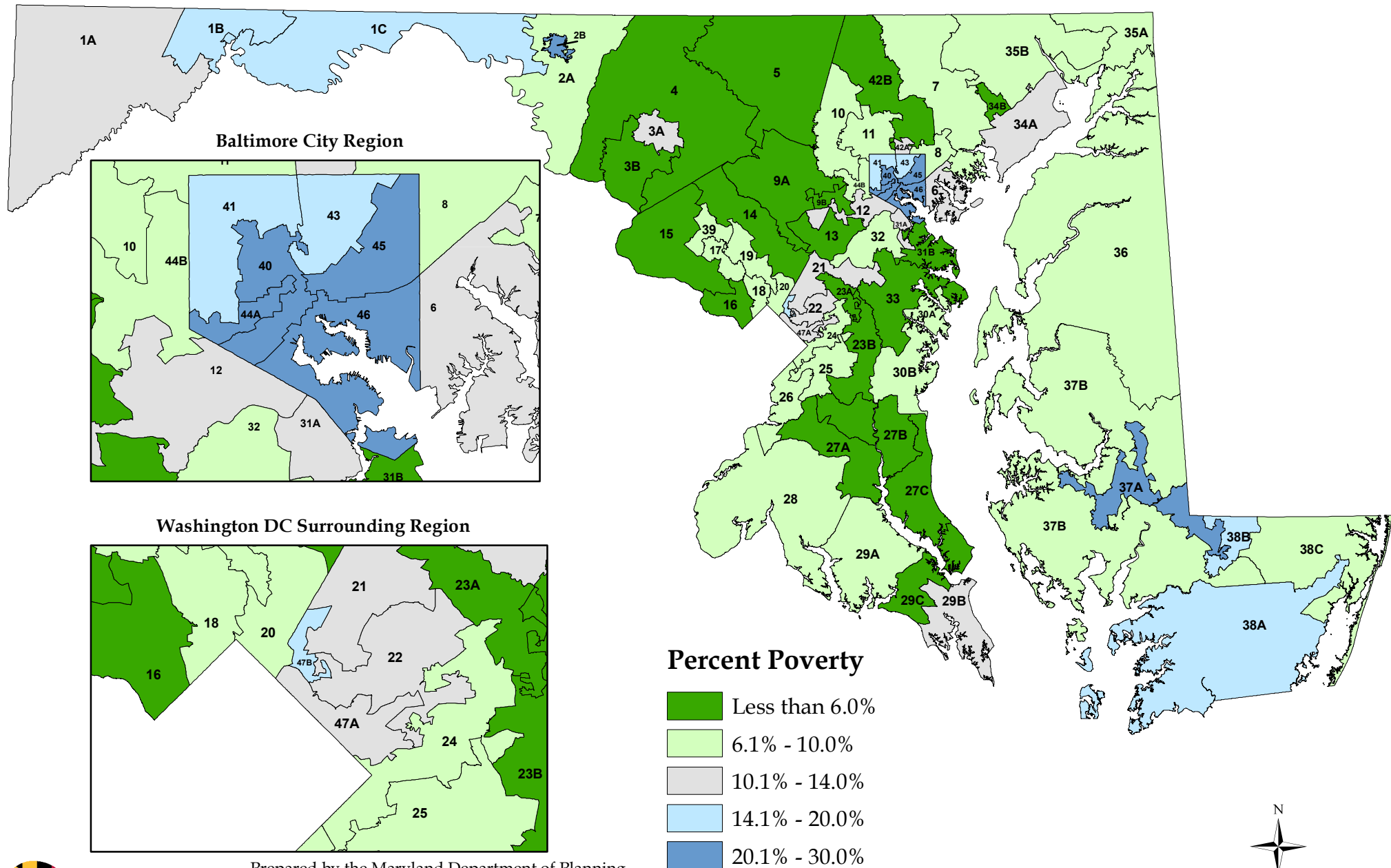
Median Household Income by Legislative District, 2014-2018



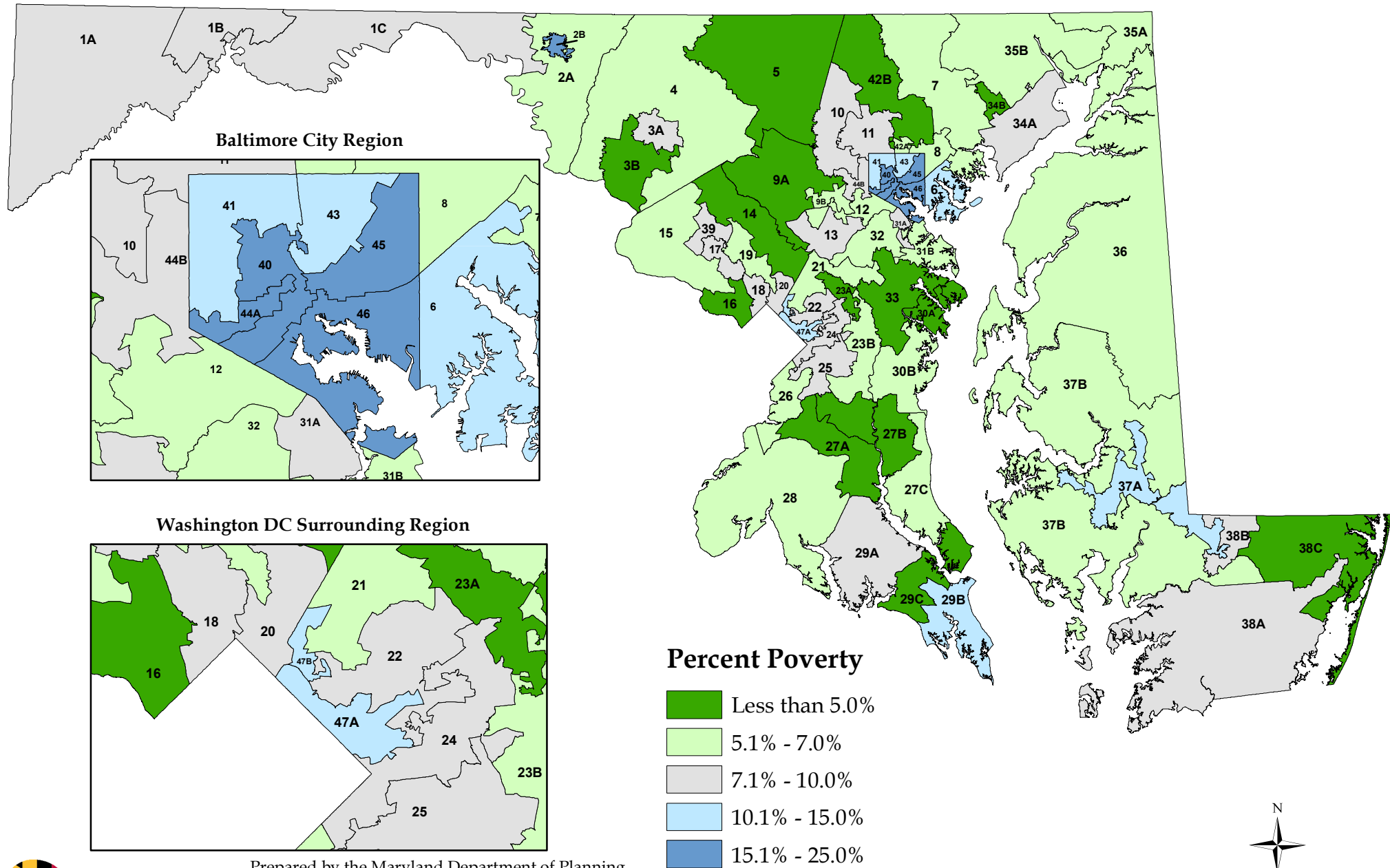
Percent Foreign Born by Legislative District, 2014-2018



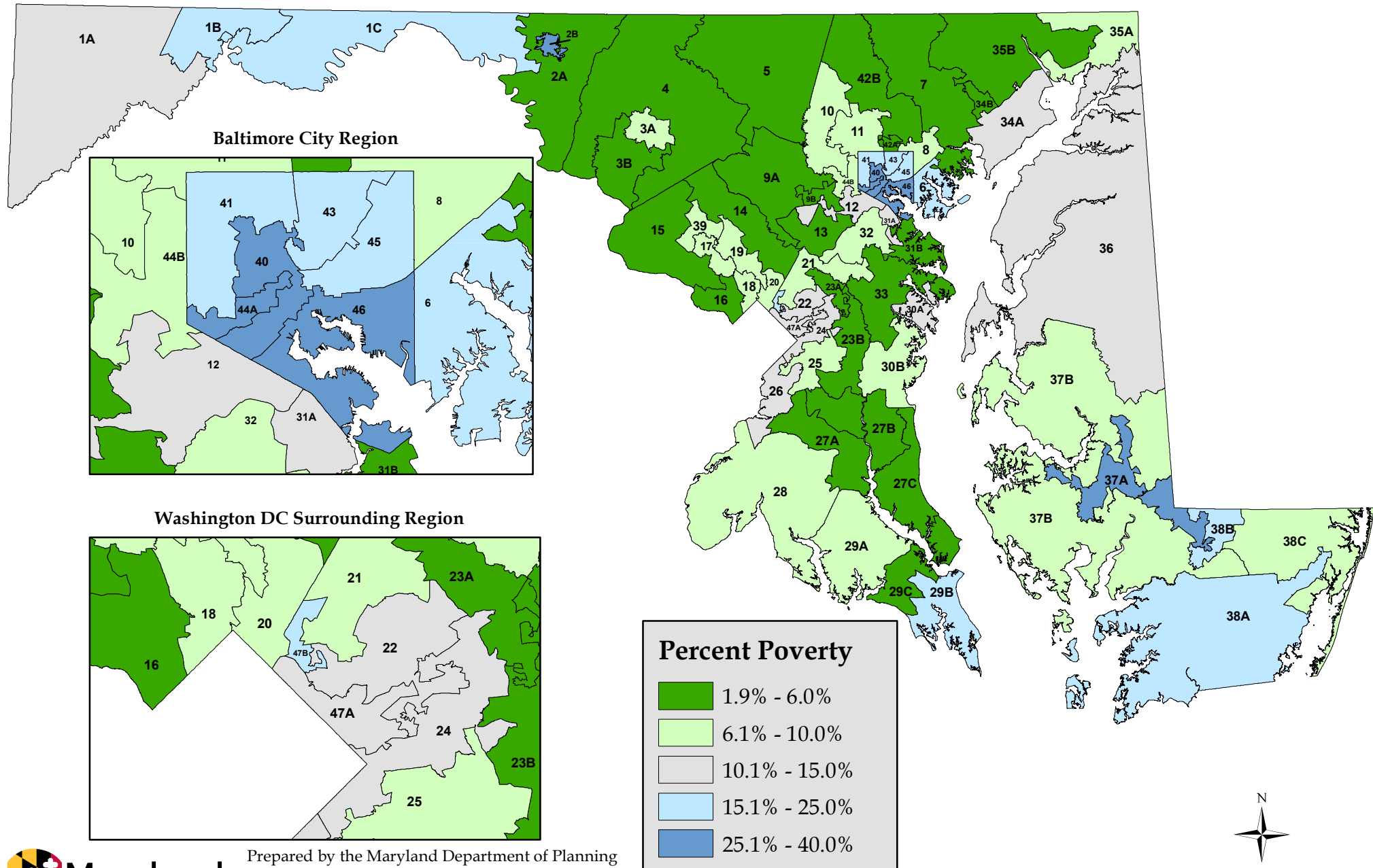
Percent of People in Poverty by Legislative District, 2014-2018



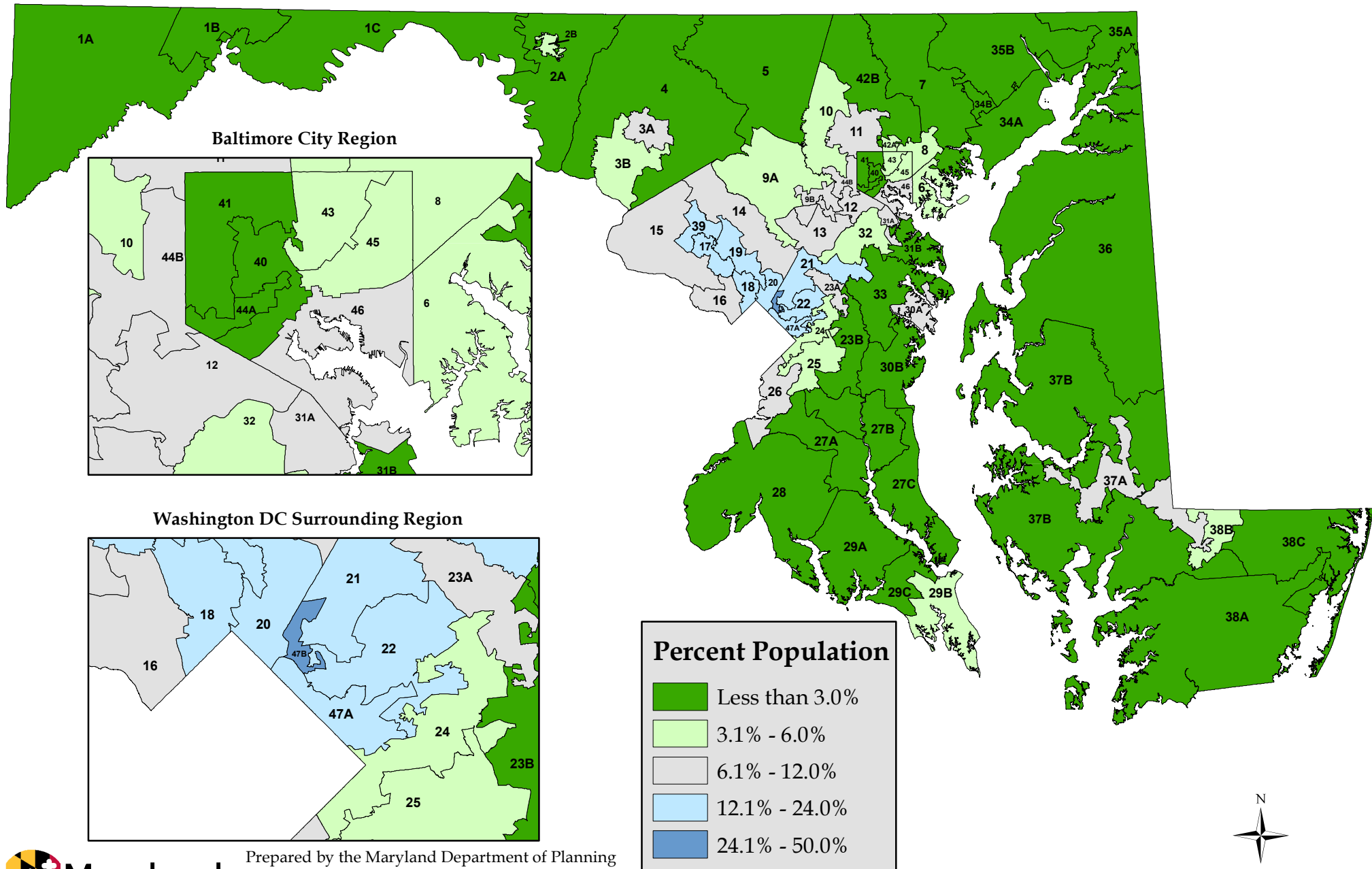
Percent of Population Age 65+ in Poverty by Legislative District, 2014-2018



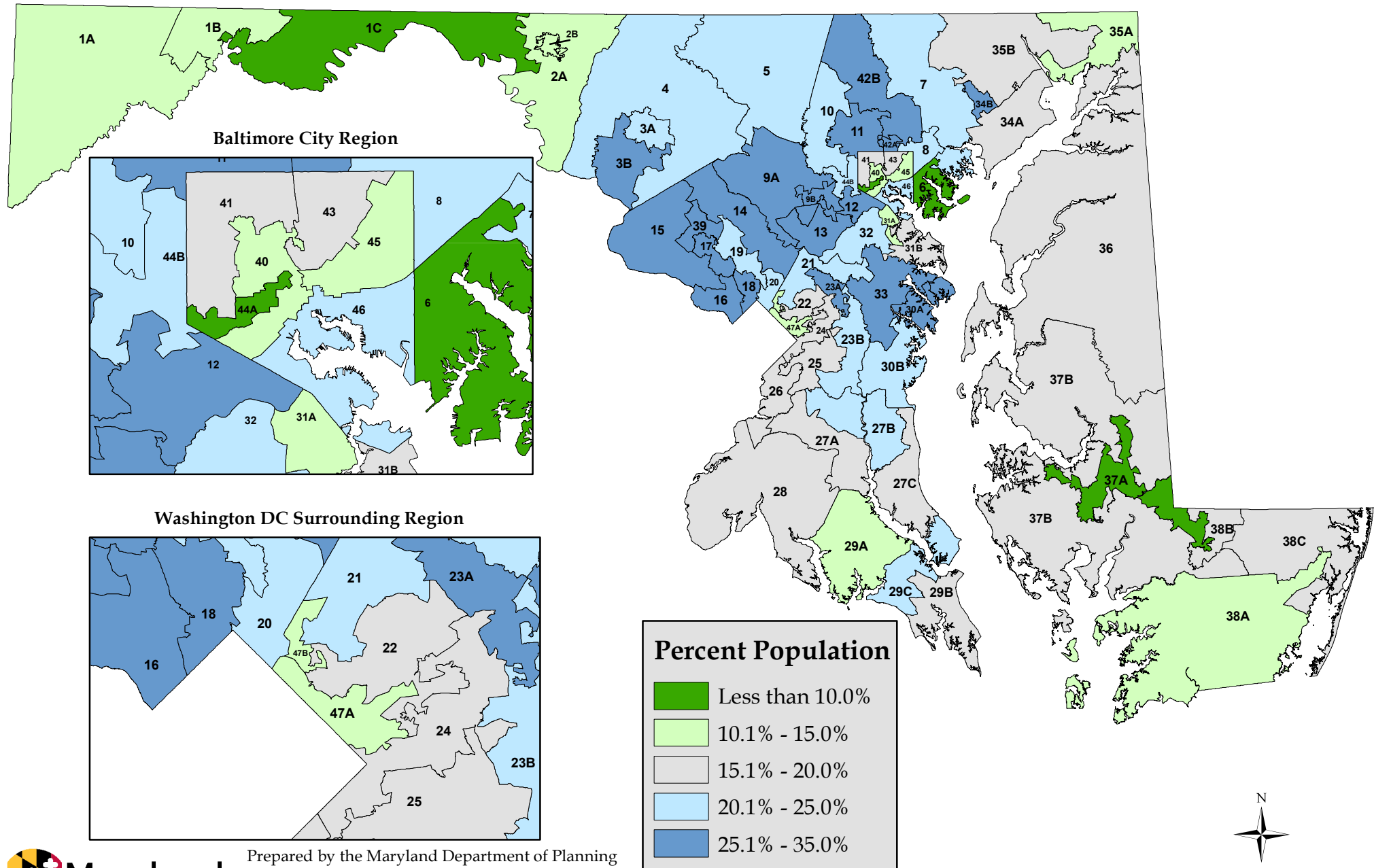
Percent of Families with Related Children Less Than 18 Years Old in Poverty by Legislative District, 2014-2018



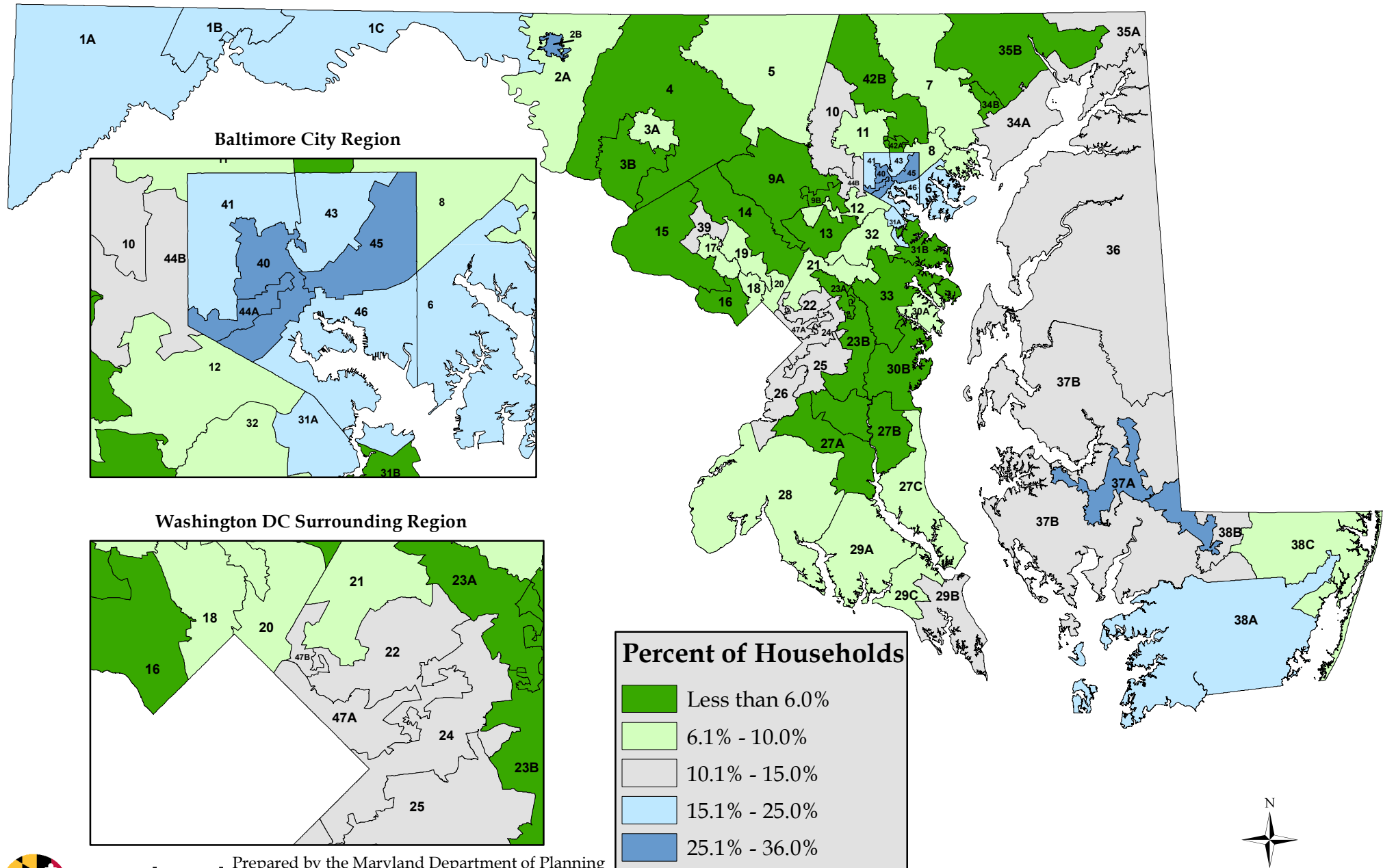
Percent of Population Who Speak English Less Than Very Well by Legislative District, 2014-2018



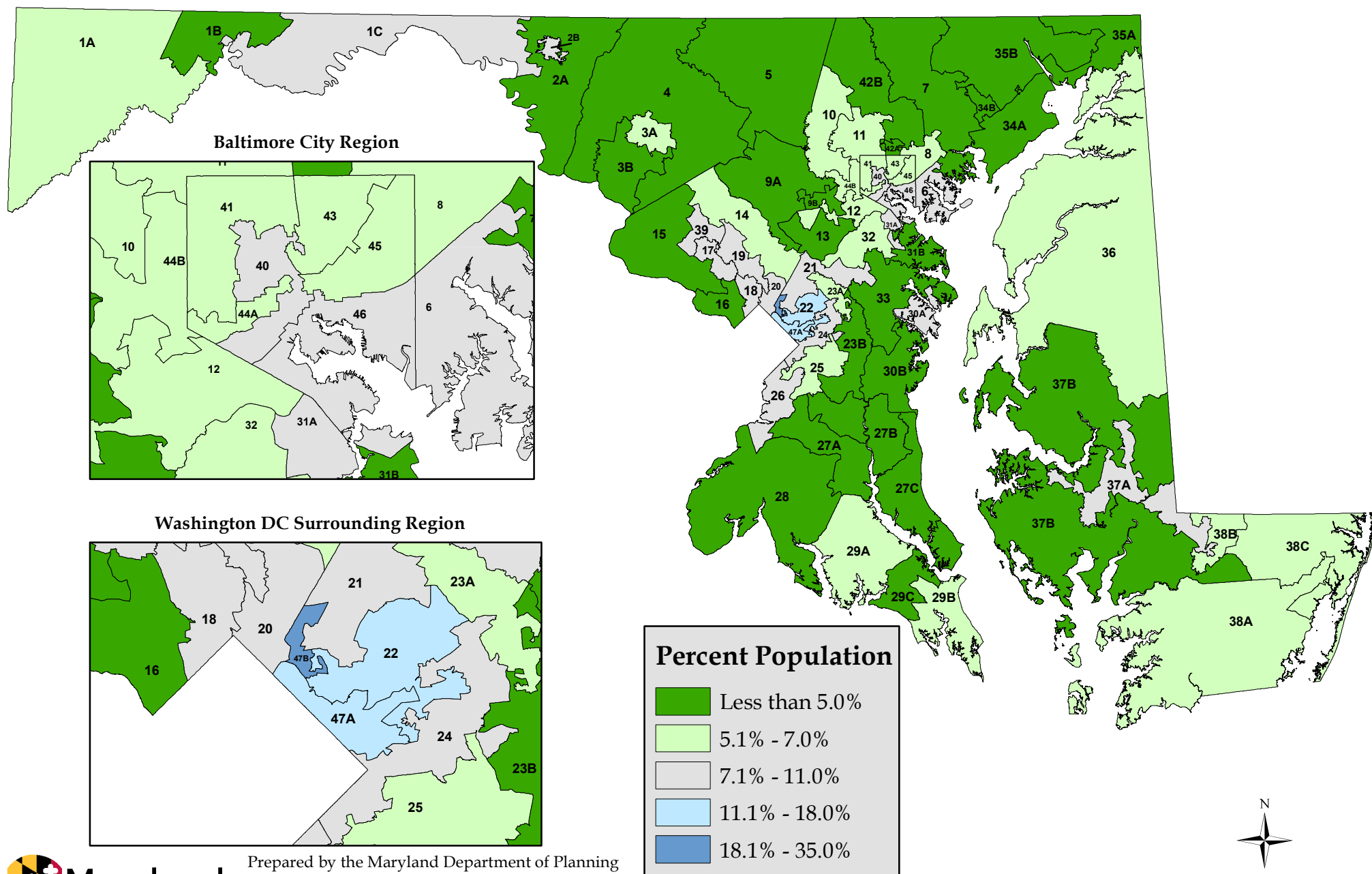
Percent of the Population Age 25+ With a Bachelor's Degree or Higher by Legislative District, 2014-2018



Percent of Households Receiving Food Stamps/SNAP Benefits by Legislative District, 2014-2018



Percent of Population without Health Insurance by Legislative District, 2014-2018



Unemployment Rate by Legislative District, 2014-2018

