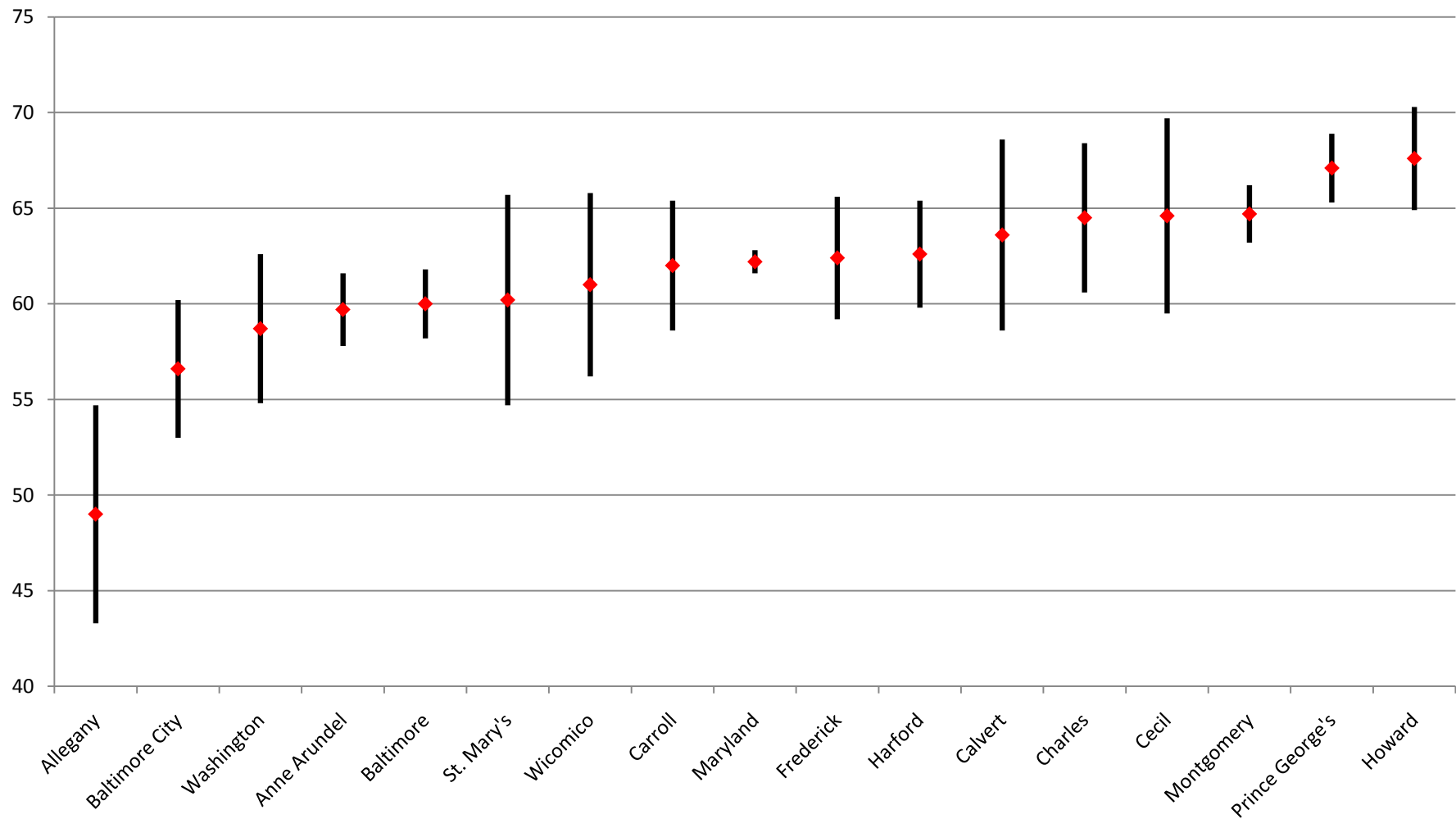


Percentage of Married-Couple Families With Both Husband and Wife in the Labor Force in Maryland and its Jurisdictions, 2008 (Table GCT2304) *



* Apparent differences may not be statistically significant at the 90 percent confidence interval.

Prepared by the Maryland Department of Planning, from the 2008 ACS for the 16 counties covered (population of 65,000 or more), September 2009