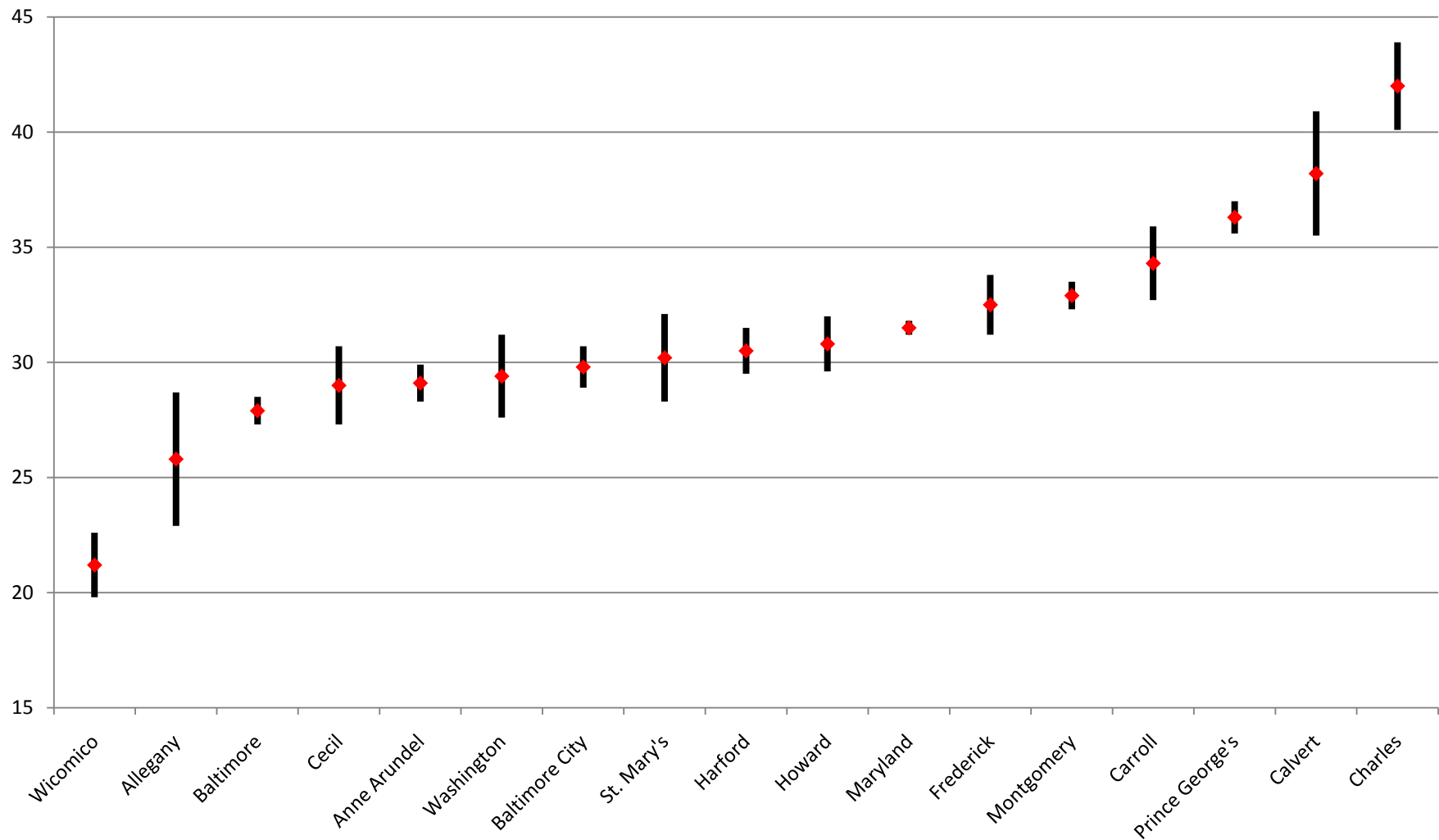


# **Mean Travel Time to Work in Minutes of Workers 16 Years and Over Who Did Not Work at Home for Maryland and its Jurisdictions in 2008 (Table GCT0801) \***



\* Apparent differences may not be statistically significant at the 90 percent confidence interval.

Prepared by the Maryland Department of Planning, from the 2008 ACS for the 16 counties covered (population of 65,000 or more), September 2009