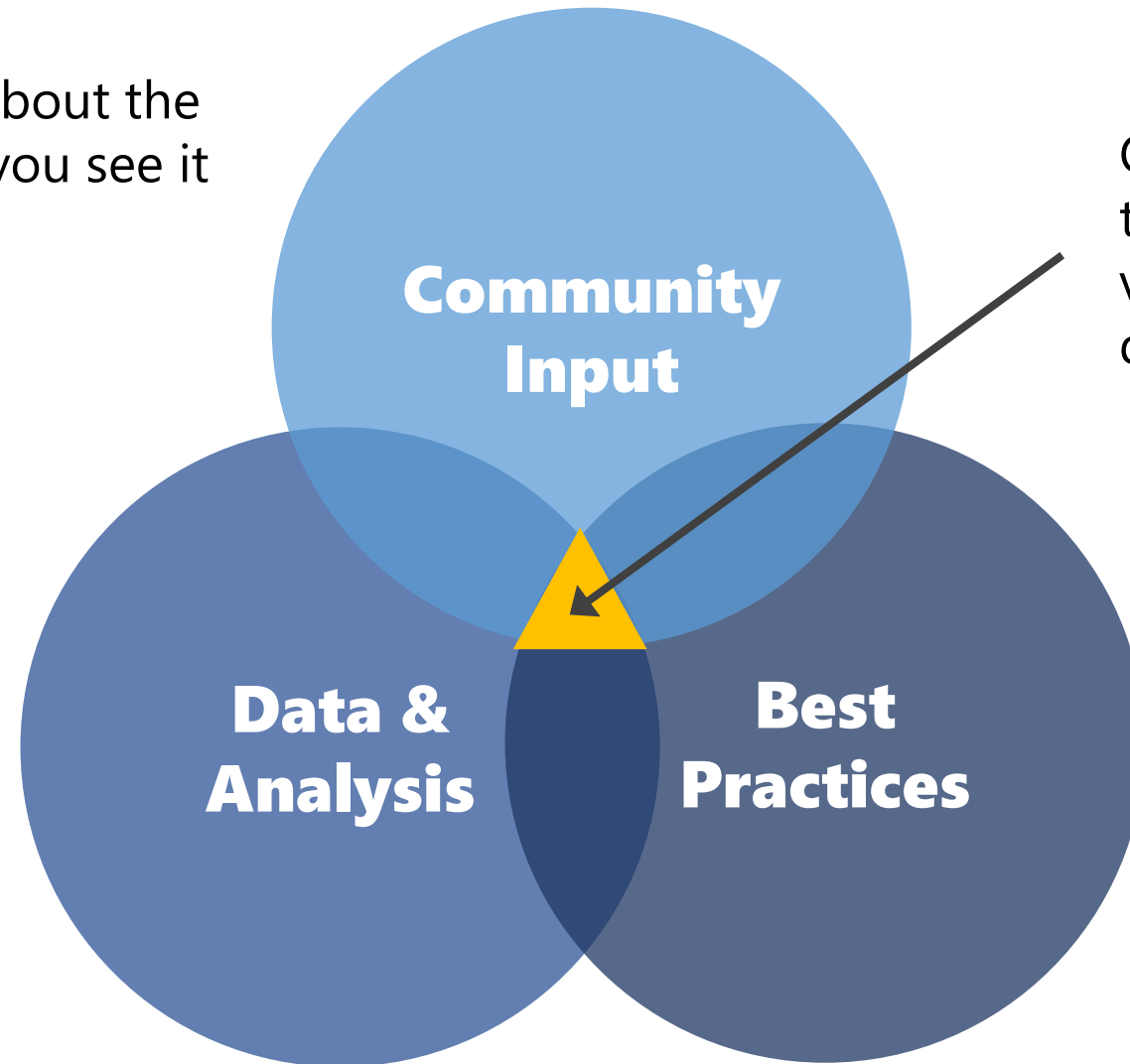


Things you will **tell us** about the community and where you see it in the future.

Opportunities in the County that **align** with community values and are supported by data analysis.



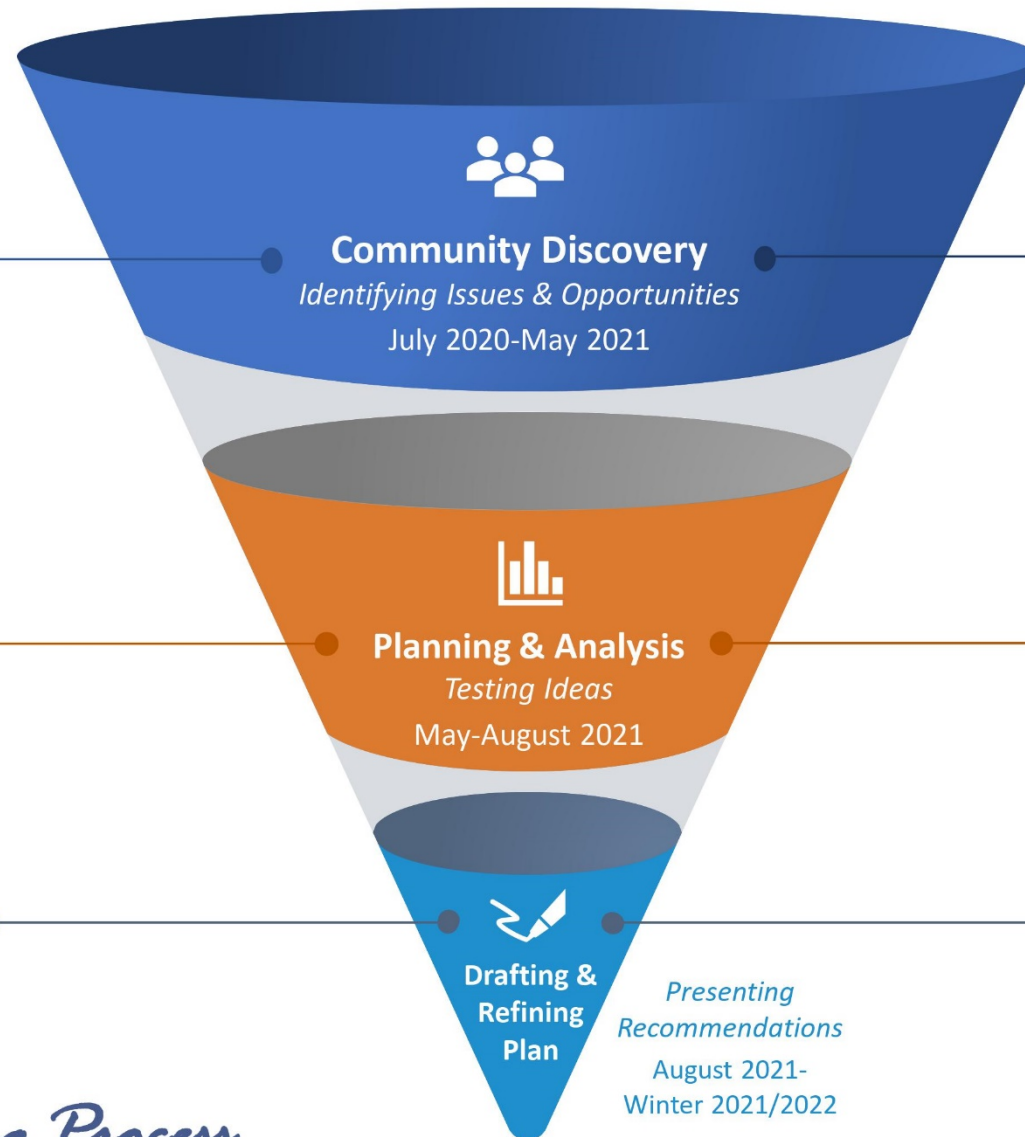
What we will **learn** about infrastructure, economy, new trends, etc.

**Experience** of County staff and the consultants they bring from working in Howard County and elsewhere.

**Combine Our Strengths in the Planning Process**

## COMMUNITY INPUT ACTIVITIES

What Makes Howard County a Special Place?  
Bring Your Own Questions  
Community Ideas Exchange Workshop & Better Communities Online Game  
On the Table Conversations  
Topic Focused Discussions  
Growth Choices Workshop  
Diversity, Equity and Inclusion Focus Groups



## OUTPUT

Draft Planning Themes  
Physical Assessment Series  
Four Growth Scenarios  
Identification of Strategic Advisory Group Topics

## COMMUNITY INPUT ACTIVITIES

PAC Work Sessions  
SAG Work Sessions  
New Town/Columbia Design Sessions

## OUTPUT

Draft Future Land Use Map  
Draft Supporting Infrastructure Strategy  
Draft Policies/Recommendations

## COMMUNITY INPUT ACTIVITIES

Draft Plan Workshop Series  
Plan Adoption Process

## OUTPUT

Public Draft Plan  
**New General Plan (HoCo By Design)**

**HOCO BY DESIGN** *Planning Process*

# Three Phases of Our Process