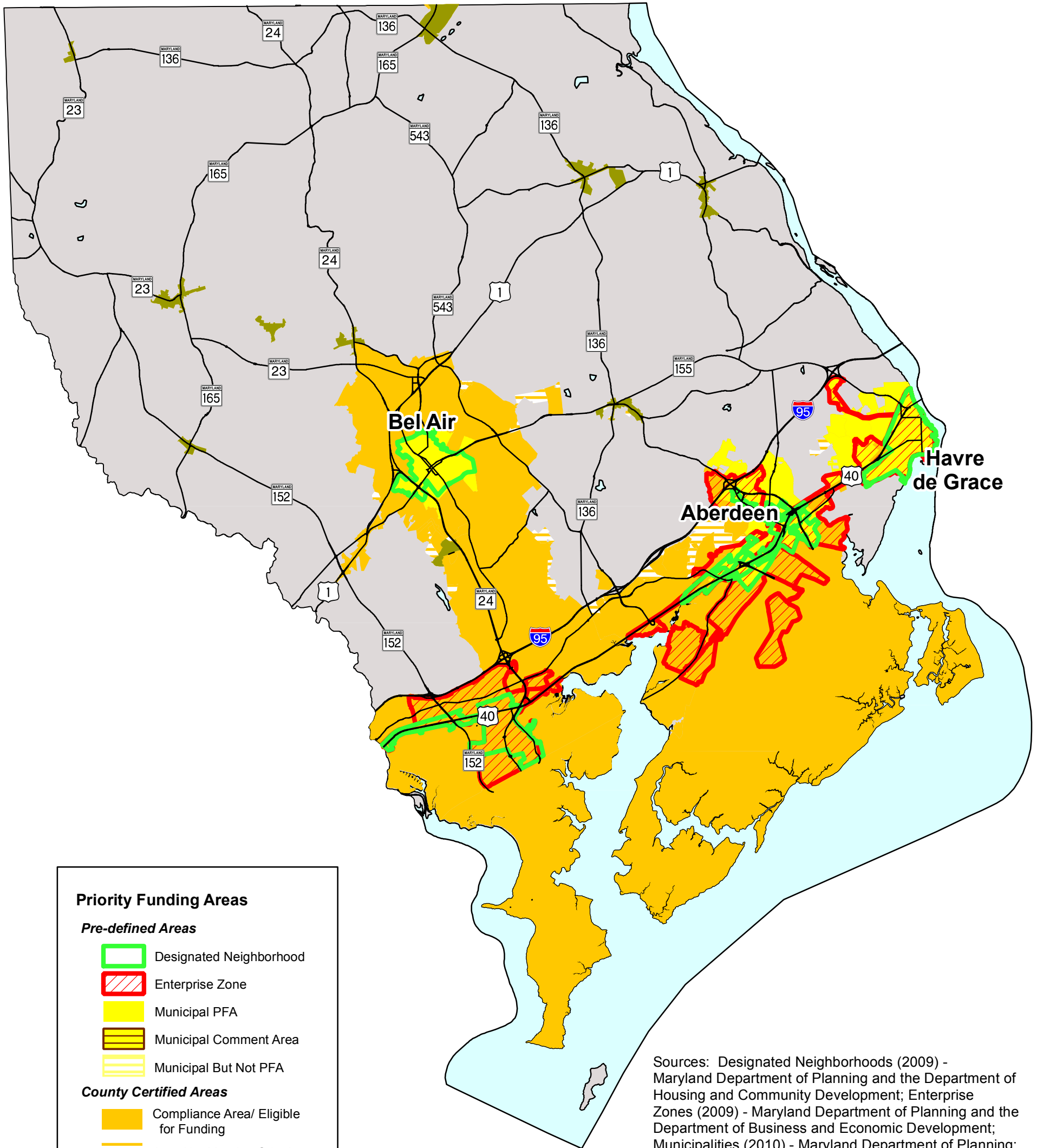


# HARFORD COUNTY

## Priority Funding Areas



**Priority Funding Areas**

*Pre-defined Areas*

- Designated Neighborhood
- Enterprise Zone
- Municipal PFA
- Municipal Comment Area
- Municipal But Not PFA

*County Certified Areas*

- Compliance Area/ Eligible for Funding
- Area Not Meeting Criteria
- Rural Villages/ Community with Water Only

Sources: Designated Neighborhoods (2009) - Maryland Department of Planning and the Department of Housing and Community Development; Enterprise Zones (2009) - Maryland Department of Planning and the Department of Business and Economic Development; Municipalities (2010) - Maryland Department of Planning; Heritage Areas (2010) - Maryland Department of Planning

Maryland Department of Planning Comment: Any proposals for projects in the area labeled as "Area Not Meeting Criteria" will be referred to the Smart Growth and Neighborhood Conservation Coordinating Subcommittee for review.

