








TALBOT COUNTY Priority Funding Areas

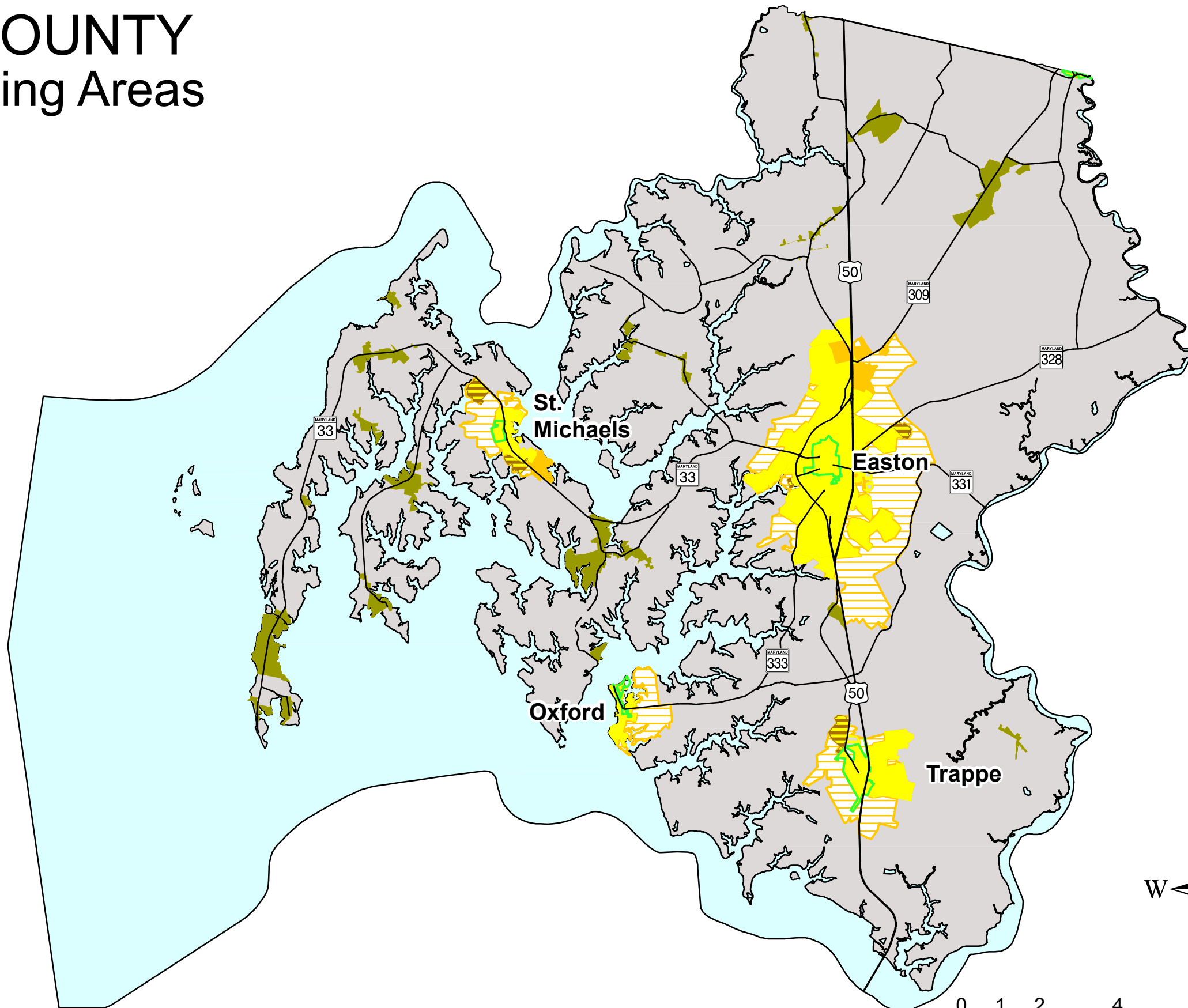
Priority Funding Areas

Pre-defined Areas

-  Designated Neighborhood
-  Municipal PFA
-  Municipal Comment Area
-  Municipal But Not PFA

County Certified Areas

-  Compliance Area/ Eligible for Funding
-  Area Not Meeting Criteria
-  Rural Villages/ Community with Water Only



Sources: Designated Neighborhoods (2009) - Maryland Department of Planning and the Department of Housing and Community Development; Enterprise Zones (2009) - Maryland Department of Planning and the Department of Business and Economic Development; Municipalities (2010) - Maryland Department of Planning; Heritage Areas (2010) - Maryland Department of Planning

Maryland Department of Planning Comment:
Any proposals for projects in the area labeled as "Area Not Meeting Criteria" will be referred to the Smart Growth and Neighborhood Conservation Coordinating Subcommittee for review.

