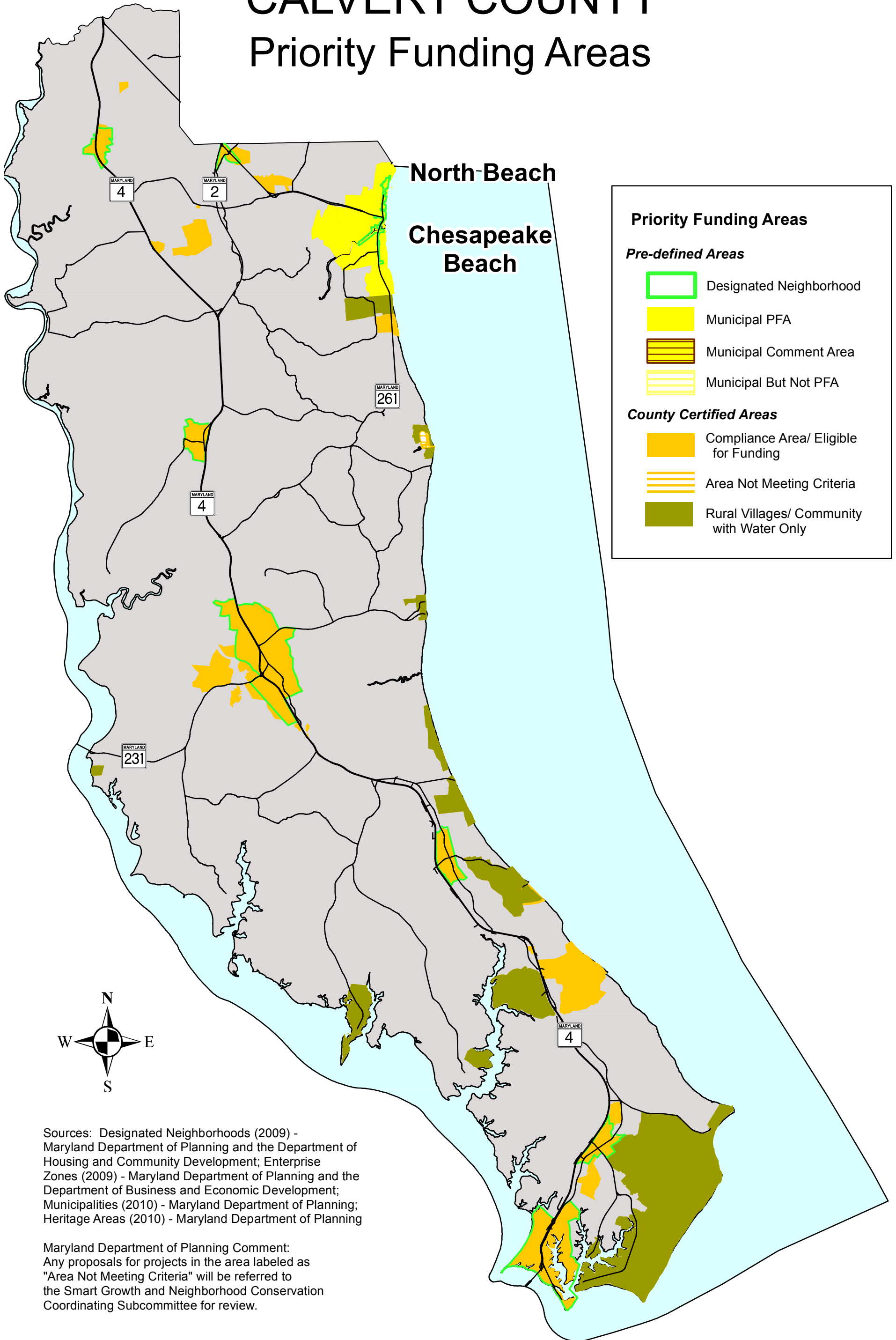


CALVERT COUNTY

Priority Funding Areas



Priority Funding Areas

Pre-defined Areas

- Designated Neighborhood
- Municipal PFA
- Municipal Comment Area
- Municipal But Not PFA

County Certified Areas

- Compliance Area/ Eligible for Funding
- Area Not Meeting Criteria
- Rural Villages/ Community with Water Only

Sources: Designated Neighborhoods (2009) - Maryland Department of Planning and the Department of Housing and Community Development; Enterprise Zones (2009) - Maryland Department of Planning and the Department of Business and Economic Development; Municipalities (2010) - Maryland Department of Planning; Heritage Areas (2010) - Maryland Department of Planning

Maryland Department of Planning Comment: Any proposals for projects in the area labeled as "Area Not Meeting Criteria" will be referred to the Smart Growth and Neighborhood Conservation Coordinating Subcommittee for review.



Maryland Department of Planning
Land Use Planning and Analysis Division
Current as of March 2011

