



Smart Growth Subcabinet Public Forum

July 20, 2022

1 pm to 3 pm



Smart Growth Subcabinet Agencies



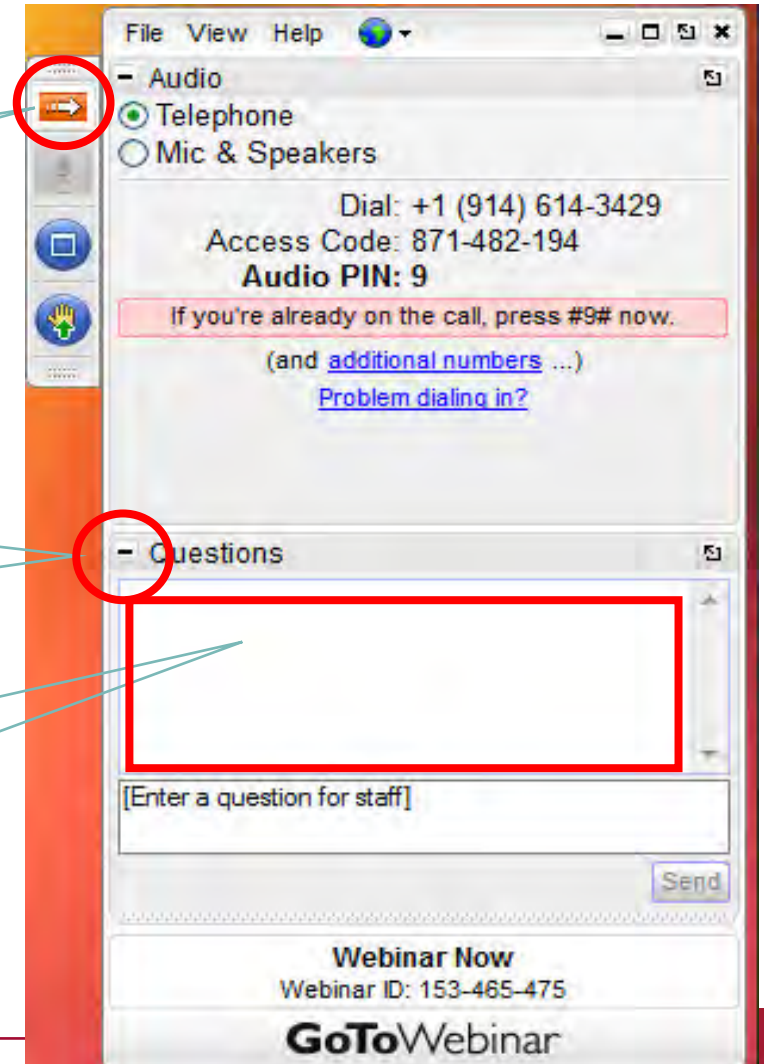
Q&A to Follow Presentation

- Use the orange arrow icon to show and hide the GoToWebinar Control Panel
- Submit questions using the Questions tool in the control panel

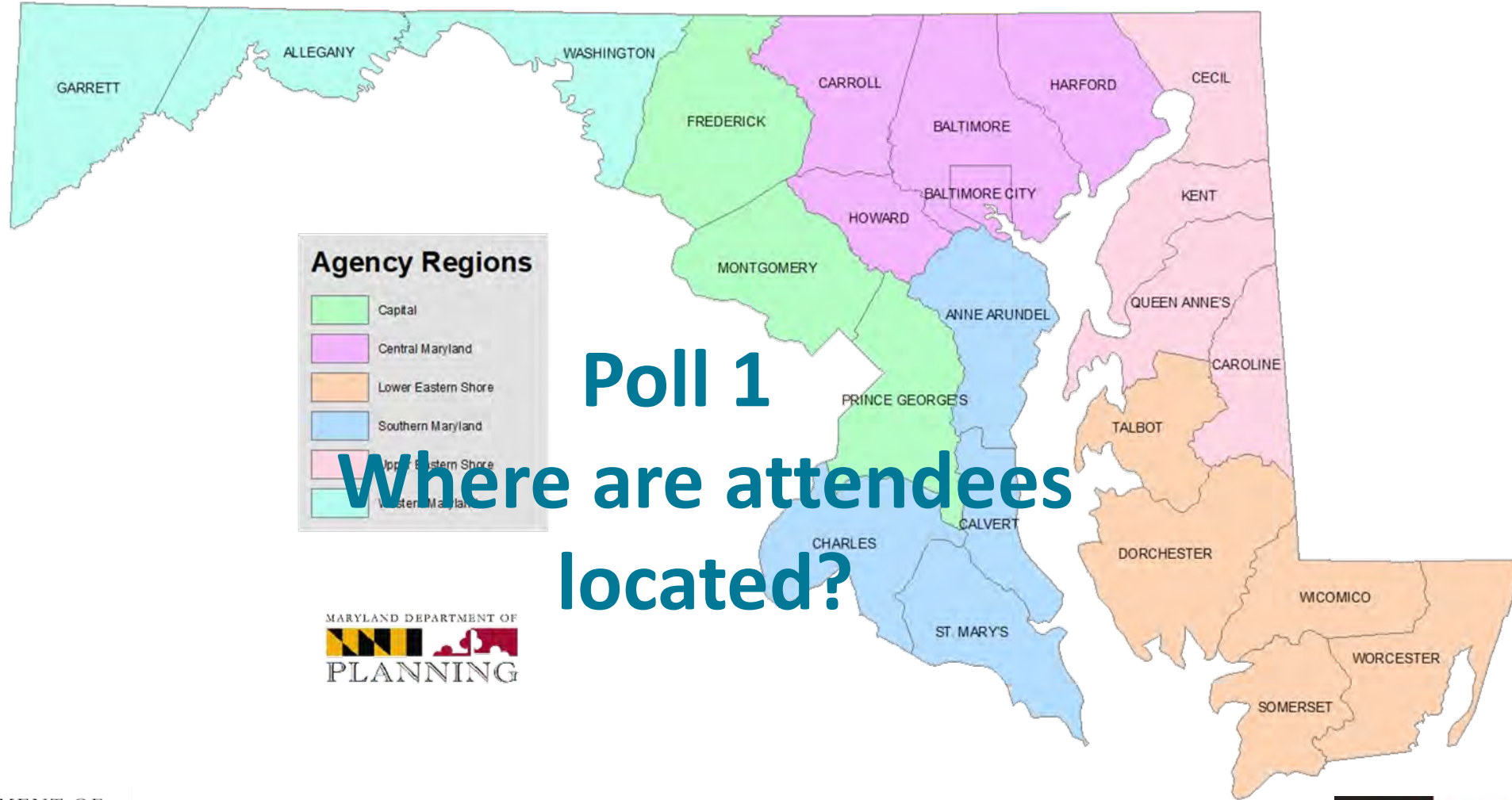
Click orange arrow to Show/Hide the Control Panel

Click – to open the Questions tool

Type your question in the text box and click Send



Maryland Department of Planning Regions



Agency Regions

- Capital
- Central Maryland
- Lower Eastern Shore
- Southern Maryland
- Upper Eastern Shore
- Western Maryland



Poll 1
Where are attendees located?



Poll 2

Which of following best describes your
role when it comes to smart and
sustainable growth?



A BETTER MARYLAND

THE STATE DEVELOPMENT PLAN AND DIGITAL RESOURCE CENTER

A SUMMARY



A BETTER MARYLAND

- Goals:
 - Enrich the lives of Marylanders
 - Use smart growth principles
 - Grow responsibly
 - Protect Maryland's resources



EXECUTIVE ORDER
01.01.2017.18

State Development Plan



PROCESS



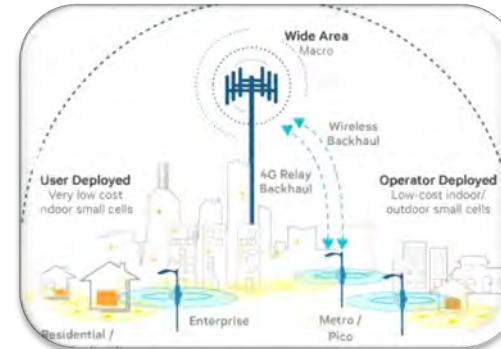
IMPLEMENTATION OBJECTIVES OF THE PLAN



**Improve the Delivery of
Programs and Services to
Local Jurisdictions**



**Respect Regional
Distinctions**

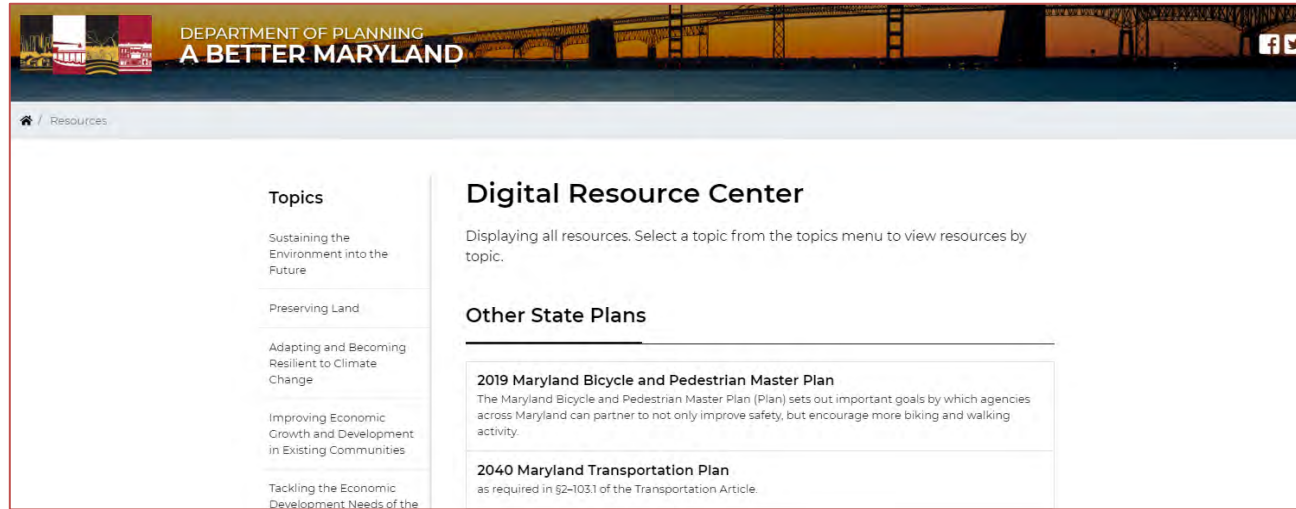


**Build Capacity in
Communities**



**Improve Collaboration
and Coordination Among
State Agencies**

DIGITAL RESOURCE CENTER



Includes:

- State Programs, Resources & Tools
- Data resources (e.g., geographic information systems (GIS) and databases) maintained by state agencies and local governments using
 - Maryland's Open Data Portal
 - Maryland iMap infrastructure

Virtual library of state and local plans and related planning resources that was an expressed deliverable in the executive order initiating the A Better Maryland effort



VISIT THE PROJECT WEBSITE AND DIGITAL RESOURCE CENTER

ABetter.Maryland.gov

Questions, please contact Chuck Boyd (chuck.boyd@maryland.gov)
or Joe Griffiths (joseph.griffiths@maryland.gov)

A BETTER MARYLAND IMPLEMENTATION

- Department of Planning
- Department of Natural Resources
- Department of Agriculture
- Energy Administration



Today's Speakers



Robert McCord
Planning Secretary



**Jeannie
Haddaway-Riccio**
Natural Resources Secretary



**Joseph
Bartenfelder**
Agriculture Secretary



Mary Beth Tung
Energy Administrator



A BETTER MARYLAND

THE STATE DEVELOPMENT PLAN AND DIGITAL RESOURCE CENTER

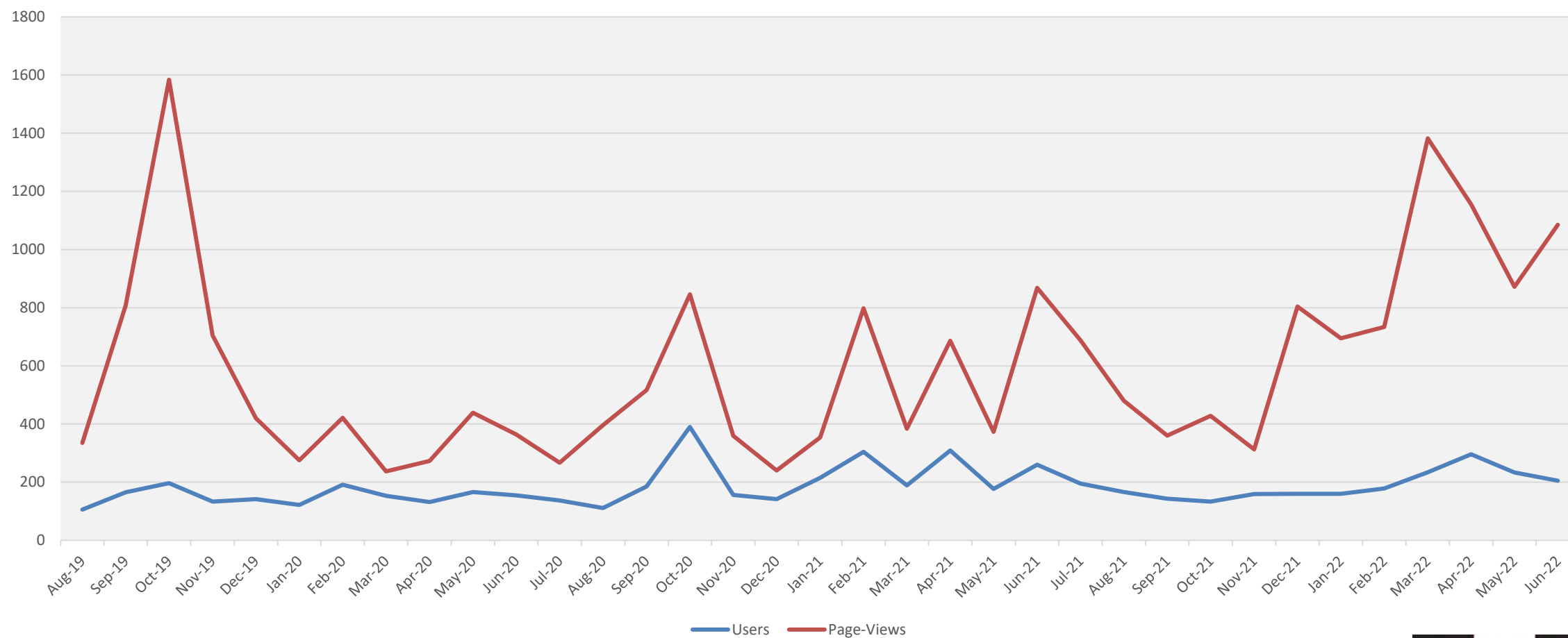
MARYLAND DEPARTMENT OF PLANNING IMPLEMENTATION

PLANNING'S IMPLEMENTATION EFFORT

- Maryland Department of Planning
 - Responsible for preparing and maintaining the state development plan
 - Responsible for coordinating with other state agencies to implement the plan and report on this through the abetter.maryland.gov website
 - Website analytics show
 - After initial surge in interest, then the website has experienced:
 - *gradual increase in users*
 - *substantial increase in pageviews by users in last year*

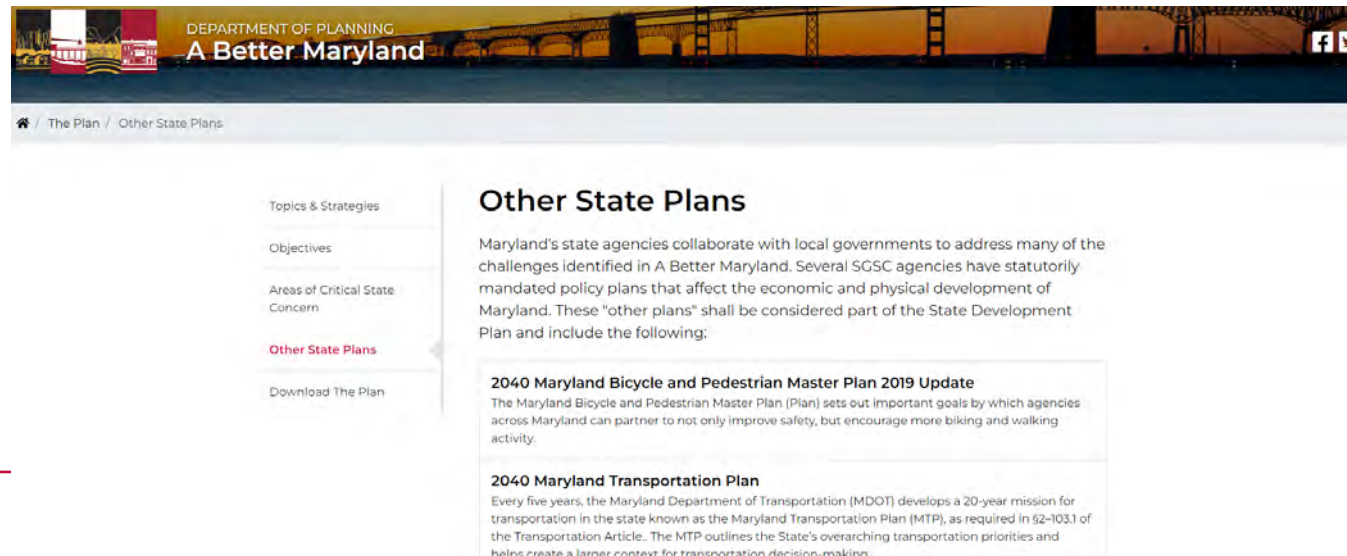


PLANNING'S IMPLEMENTATION EFFORT (A BETTER MARYLAND WEBSITE ANALYTICS)



PLANNING'S IMPLEMENTATION EFFORT

- Department of Planning continues to engage with state agency partners to increase the resource content on the website.
- 19 State agencies, commissions, and groups contribute to the content on the A Better Maryland website
- Planning will highlight 15 resources (11 posted on the site and **four under development**) prepared in coordination with state agency partners



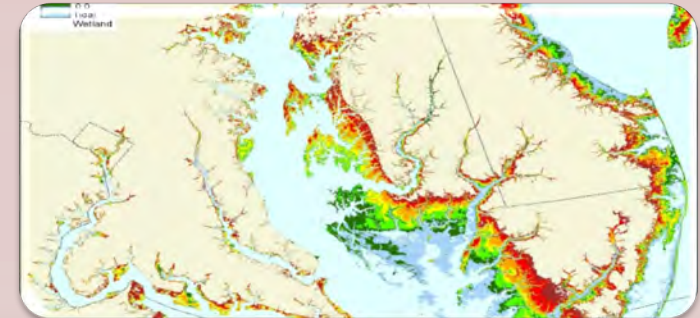
TOPICS: ENVIRONMENT



**Sustaining
Environment into the
Future**



Preserving Land



**Adapting and
Becoming Resilient
to Climate Change**

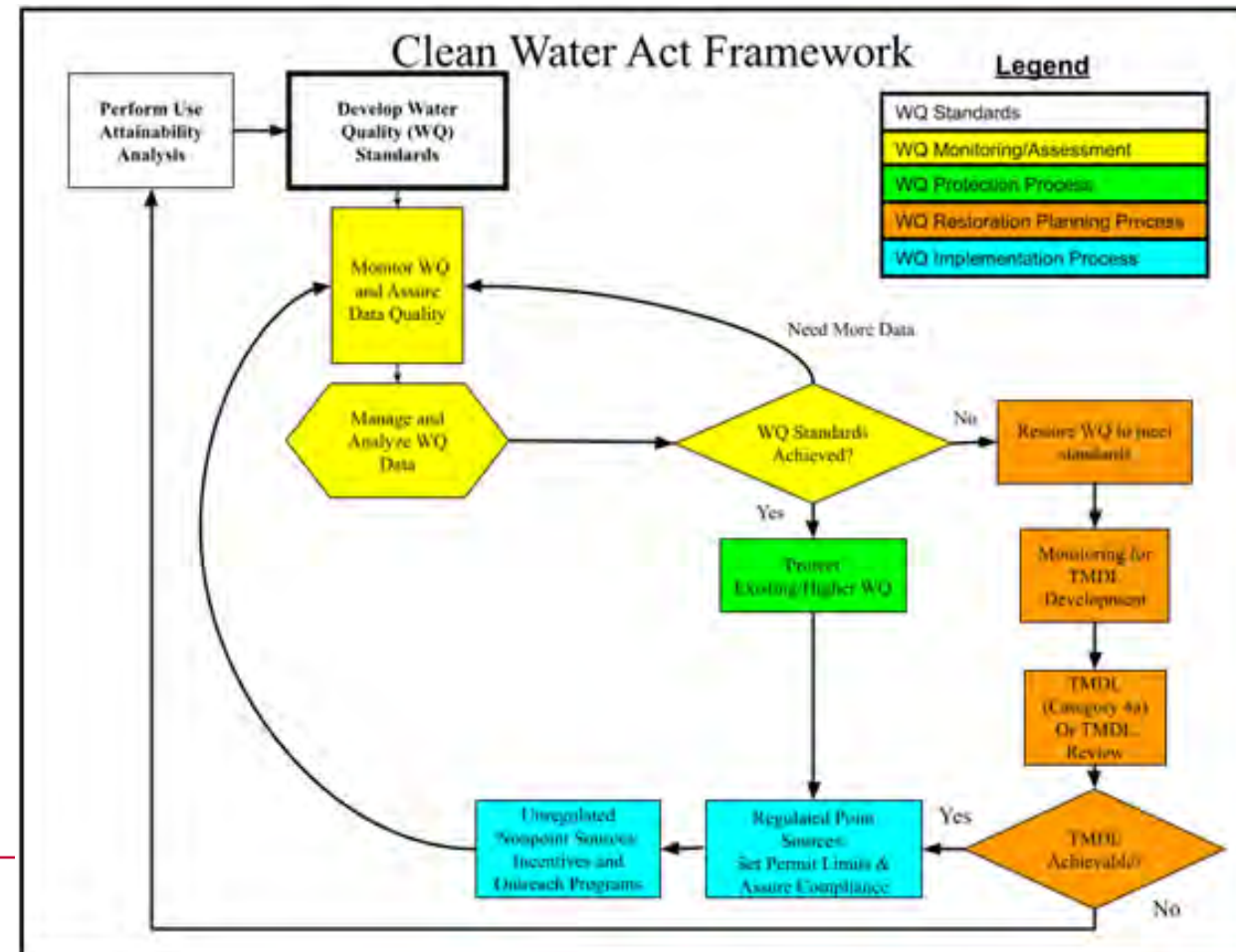
PLANNING'S ENVIRONMENT IMPLEMENTATION EFFORTS

- 2022 Water Resources Element (WRE) Guidance Update
- Maryland's Plan to Adapt to Saltwater Intrusion and Salinization
- Maryland Growth & Conservation Analysis Tool
- Statewide Land Use Map (New Initiative Underway!)
- Maryland Protected Lands Dashboard



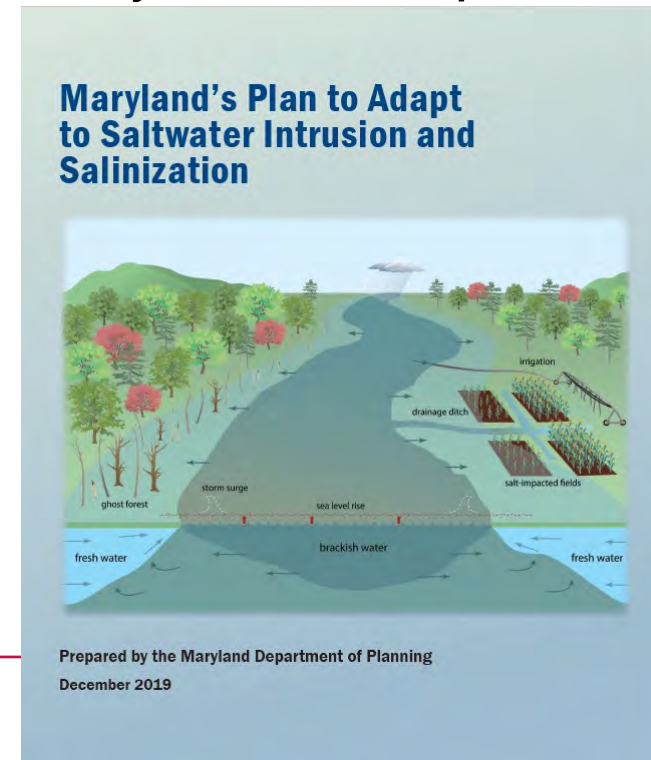
PLANNING'S ENVIRONMENT IMPLEMENTATION EFFORTS

- 2022 Water Resources Element (WRE) Guidance Update
 - Update of the 2007 WRE model and guidelines
 - Web-based resource for local governments
 - Expanded focus on flooding and climate change
 - Includes WRE checklists and best practices
 - Outreach & training currently underway



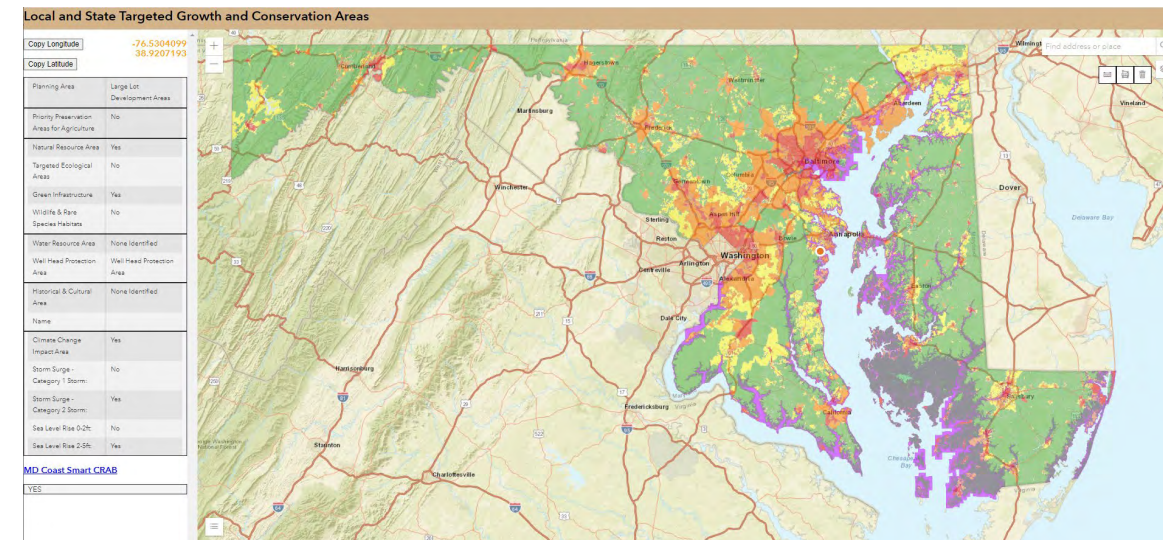
PLANNING'S ENVIRONMENT IMPLEMENTATION EFFORTS

- Maryland's Plan to Adapt to Saltwater Intrusion and Salinization
 - Completed in December 2019 and [posted on Planning's website](#)
 - Response to Chapter 628 (2018) to “establish a plan to adapt to saltwater intrusion.”
 - Collaborative effort of many state agency, university, and other partners
 - Saltwater intrusion and salinization already impacts Maryland’s groundwater, surface waters, wetlands, coastal forests, agriculture and infrastructure
 - No comprehensive understanding of all of the areas currently at risk, and limited knowledge of which areas are at risk in the future.
 - To determine current and future areas at risk, extensive research, modeling and monitoring is recommended.



PLANNING'S ENVIRONMENT IMPLEMENTATION EFFORTS

- Maryland Growth & Conservation Analysis Tool
 - Interactive map of local and state targeted growth and conservation areas for coordinated planning, management and resource allocation.
 - Used for capital investment programming and other strategic planning to identify where and how local and state government, as well as the private sector, can work together to achieve common goals.



PLANNING'S ENVIRONMENT IMPLEMENTATION EFFORTS

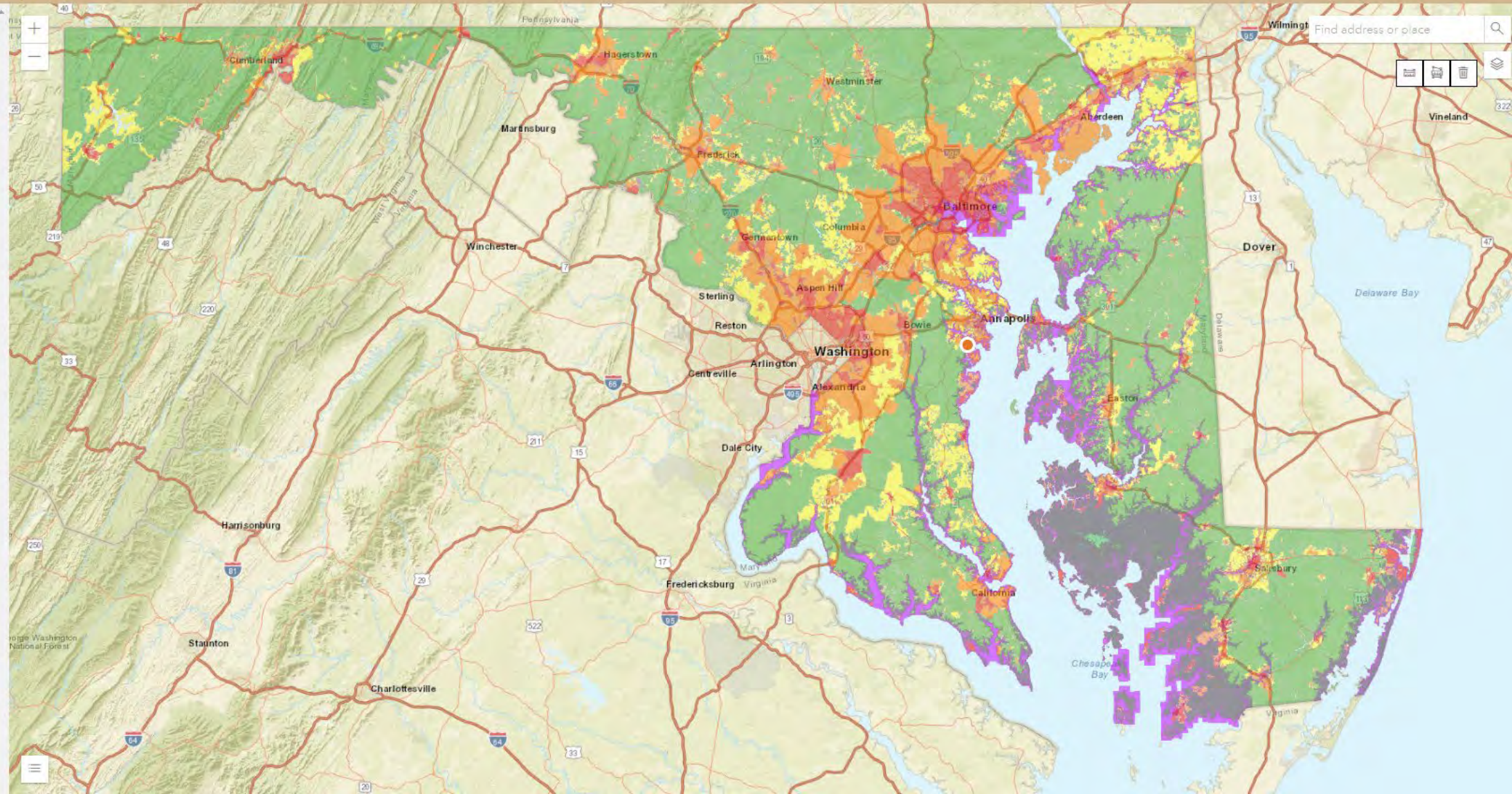
Local and State Targeted Growth and Conservation Areas

Copy Longitude -76.5304099
Copy Latitude 38.9207193

Planning Area	Large Lot Development Areas
Priority Preservation Areas for Agriculture	No
Natural Resource Area	Yes
Targeted Ecological Areas	No
Green Infrastructure	Yes
Wildlife & Rare Species Habitats	No
Water Resource Area	None Identified
Well Head Protection Area	Well Head Protection Area
Historical & Cultural Area	None Identified
Name	
Climate Change Impact Area	Yes
Storm Surge - Category 1 Storm:	No
Storm Surge - Category 2 Storm:	Yes
Sea Level Rise 0-2ft:	No
Sea Level Rise 2-5ft:	Yes

MD Coast Smart CRAB

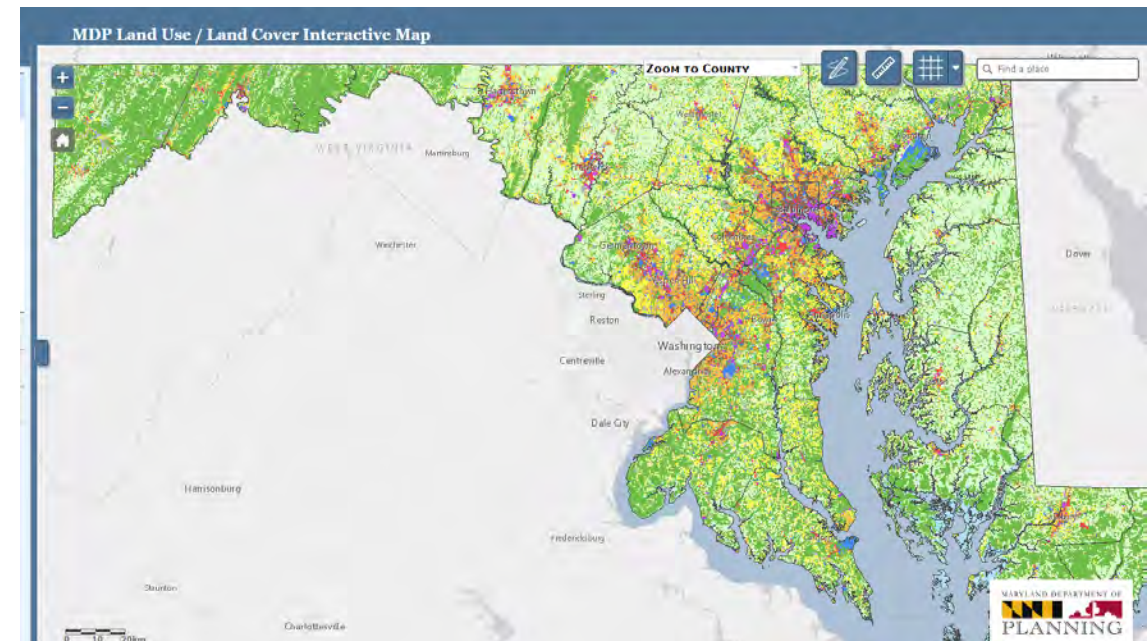
YES



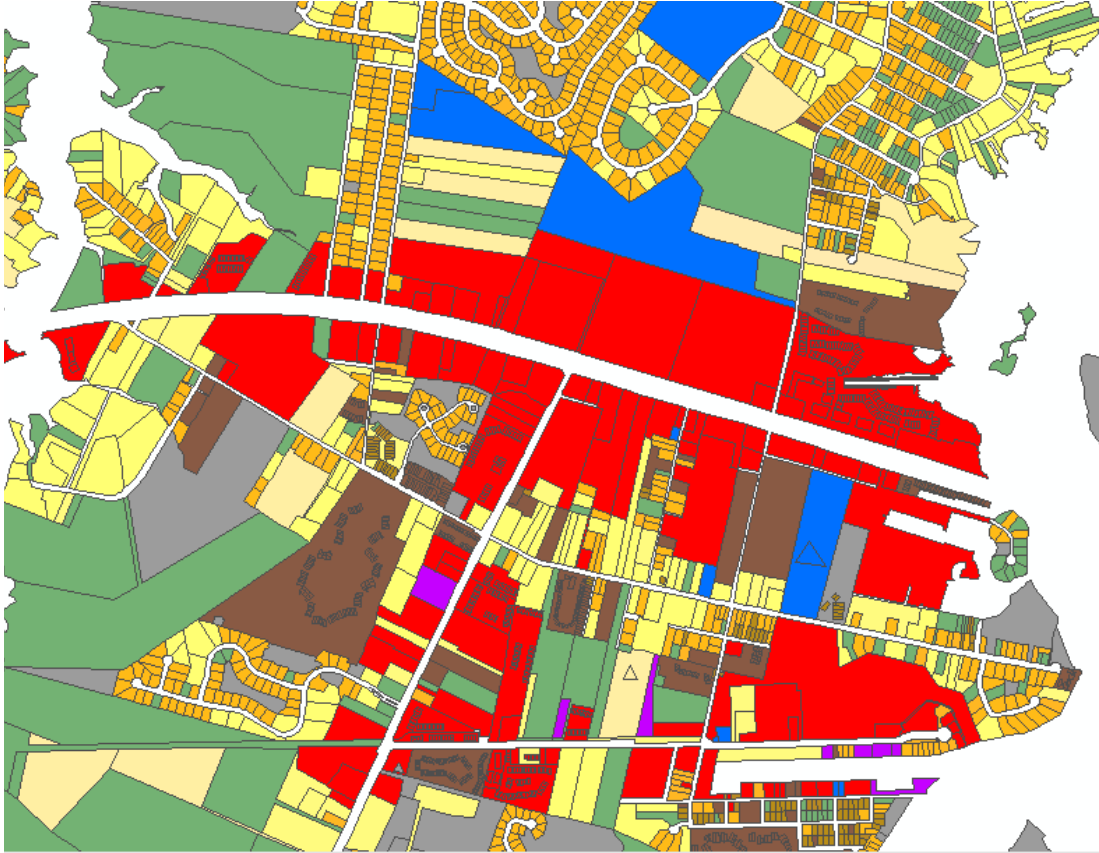
PLANNING'S ENVIRONMENT IMPLEMENTATION EFFORTS

- Statewide Land Use Map (New Initiative Underway!)

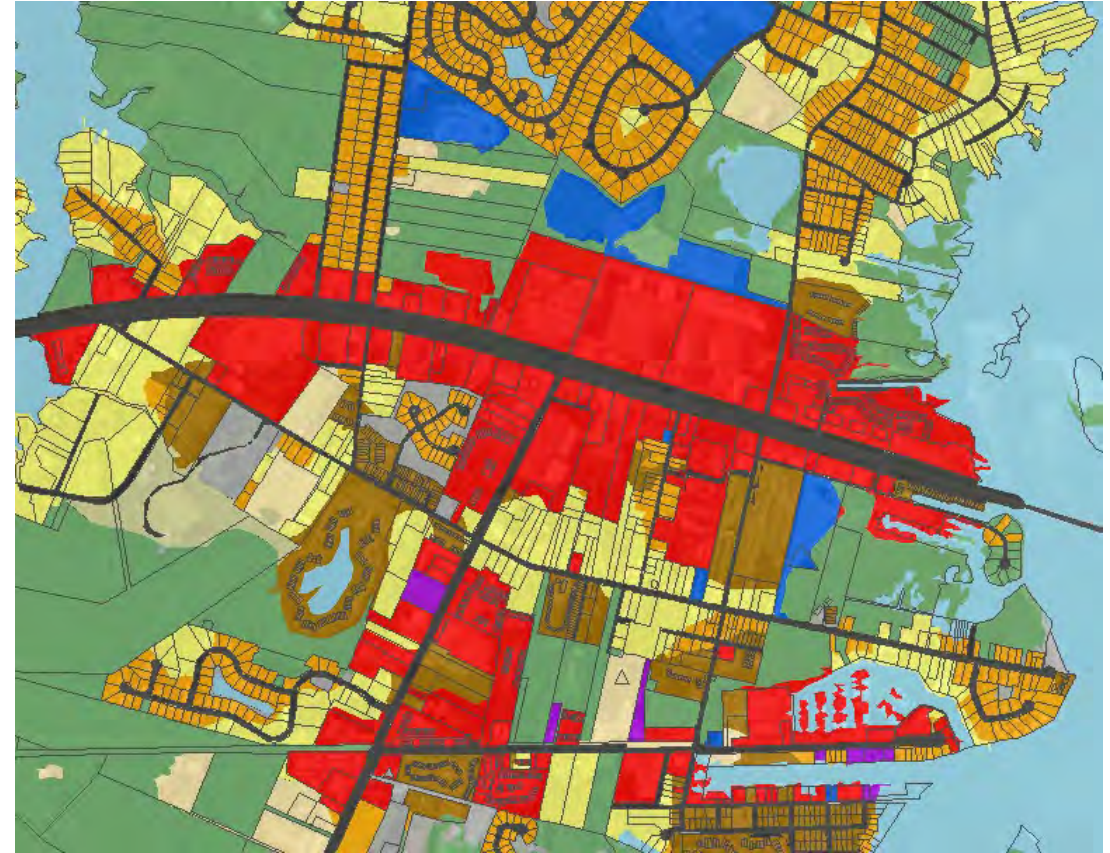
- Working on updating the 2010 Land Use/Land Cover Map
- Automating the updating process to enable updates approximately every 3 years
- More closely integrated with other planning & land use analysis efforts
- Currently engaging local governments to ensure accuracy and utility



2020 LAND USE MAP METHODOLOGY ENHANCEMENTS



Step 1: Parcel Classification

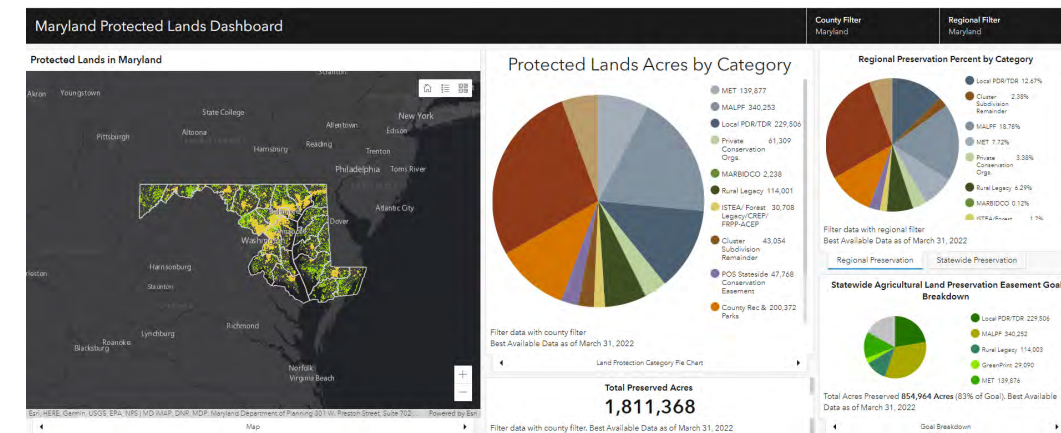


Step 2: Statewide Rules for Developed Extent

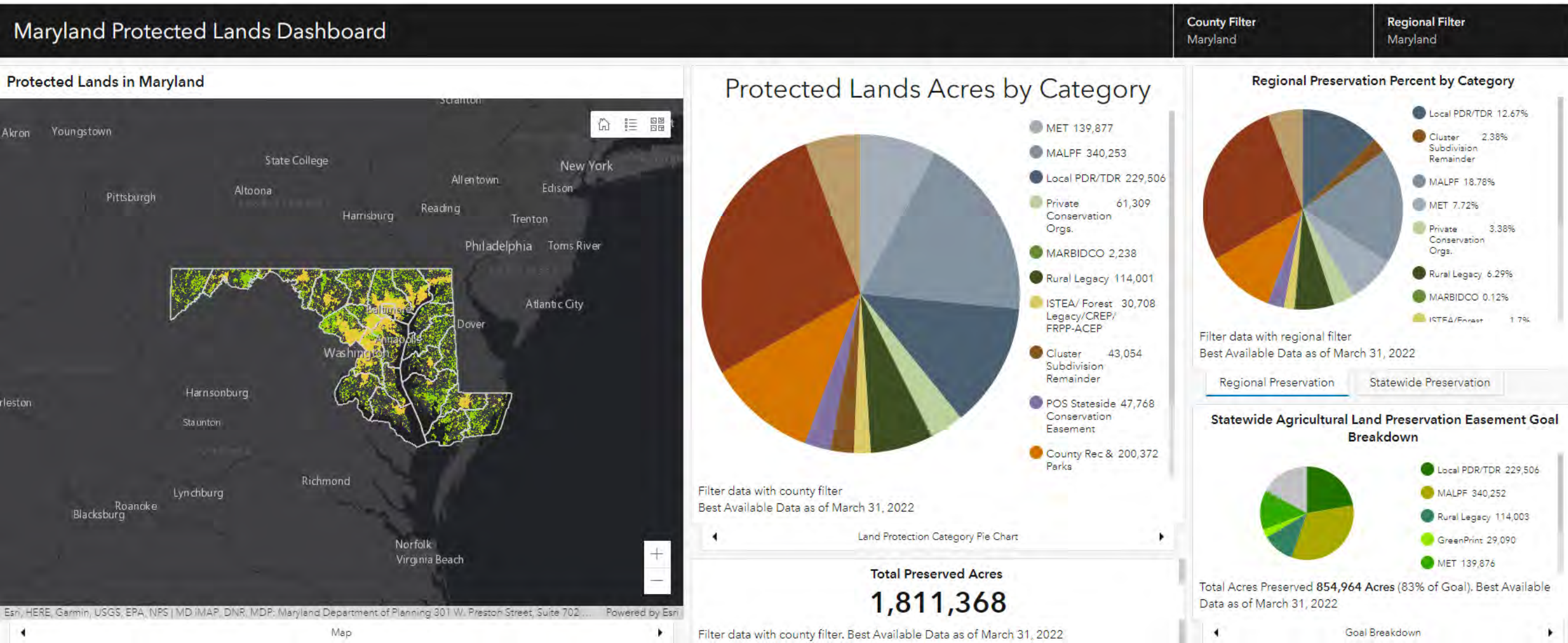
*Images show hypothetical example. Actual land uses may differ

PLANNING'S ENVIRONMENT IMPLEMENTATION EFFORTS

- Maryland Protected Lands Dashboard
 - Current status of Maryland's land preservation efforts at the State, Region and County level
 - Protected land by funding program
 - Reports on state land preservation goal, which is 83% of the 1,030,000-acre goal
 - Serves as a useful measure for policy makers and advocates at the state and local level



PLANNING'S ENVIRONMENT



TOPICS: ECONOMIC DEVELOPMENT



**Tackling the
Economic
Development
Needs of the
Next Century**



**Improving
Economic
Growth and
Development
in Existing
Communities**



**Meeting
Renewable
Energy Goals**



**Addressing
Maryland's
Transportation,
Infrastructure, and
Technology
Challenges and
Opportunities**

PLANNING'S ECONOMIC DEVELOPMENT IMPLEMENTATION EFFORTS

- Brownfields Redevelopment Assistance Program
- Reinvest Maryland Website & Toolkit
- Transportation Tools
 - Snapshot Maryland Transportation Planning Dashboard
 - Transit Station Area Profile Tool
 - Transit-Oriented Development Web Resources
 - Transportation Element Checklist & Technical Assistance
- Statewide Building Permit Reporting System (New Initiative Underway!)



**Transit-Oriented Development as a
Redevelopment Tool**



PLANNING'S ECONOMIC DEVELOPMENT IMPLEMENTATION EFFORTS

- Brownfields Redevelopment Assistance Program
 - Planning serves as a resource, liaison, and facilitator for brownfield remediation and redevelopment.
 - Connects jurisdictions and others with
 - brownfield assessment, cleanup, planning, and redevelopment funding
 - technical and financial resources to help navigate the brownfield process
 - grant applications assistance and other types of funding and tax incentives.
 - Education and Training



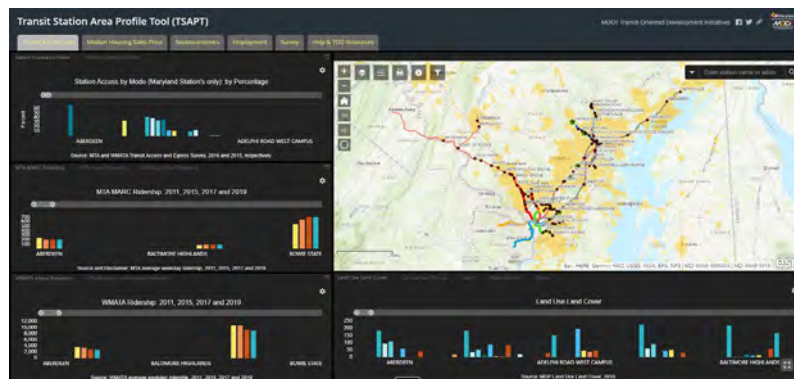
PLANNING'S ECONOMIC DEVELOPMENT IMPLEMENTATION EFFORTS



- Reinvest Maryland 2.0 Website & Toolkit
 - A Guide to Accelerating Infill, Redevelopment and Community Revitalization
 - Interactive StoryMap of 27 redevelopment cases studies in Maryland
 - Catalog of technical assistance provided to local jurisdictions
 - Filterable Toolbox of more than 100 federal and state programs to support infill, redevelopment and community revitalization in Maryland



PLANNING'S ECONOMIC DEVELOPMENT IMPLEMENTATION EFFORTS

- Transportation Tools
 - Snapshot Maryland Transportation Planning Dashboard
 - Transit Station Area Profile Tool
 - Planning Tools for Transit-Oriented Development
 - Transportation Element Checklist & Technical Assistance



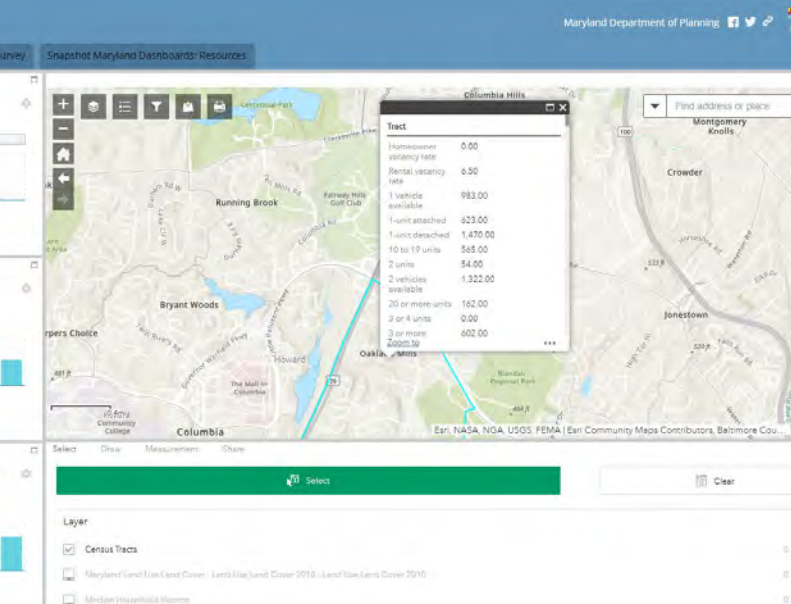
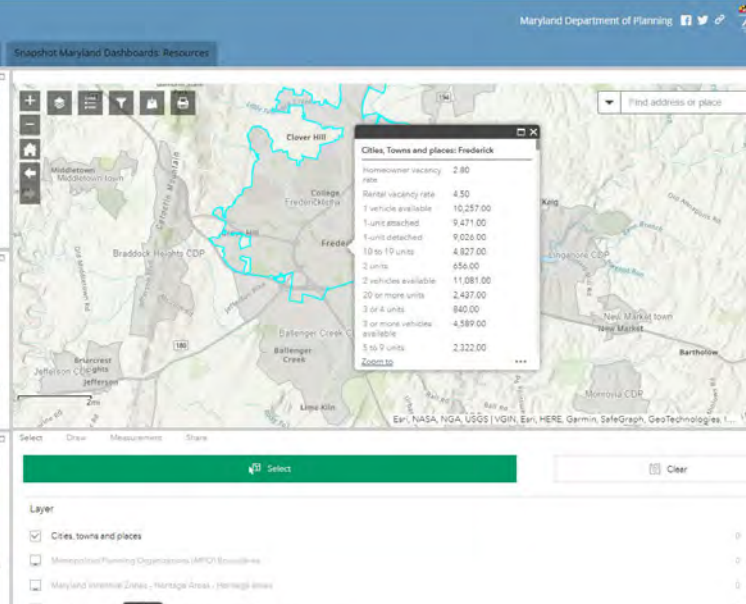
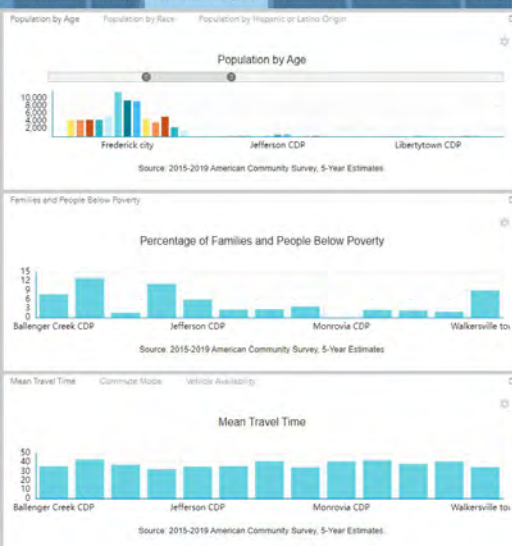
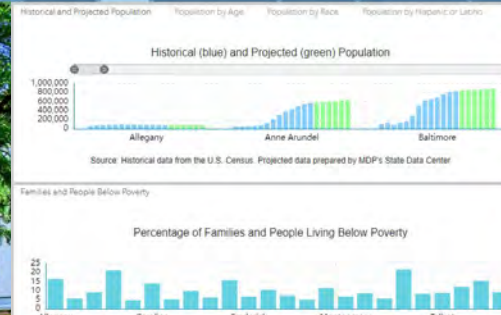



Data Table at the bottom of this document and are highlighted in **green font**. The table has some additional data sources and can serve a quick reference sheet. Best practices or resource guides are noted in call out boxes where available. Notes and suggestions are indicated by **red font**. Contacts are also provided for many data sources, but if not available below, feel free to contact Joe Griffiths at joseph.griffiths@maryland.gov with any questions.

Note: Some sections of this checklist may not apply to every comprehensive plan, as transportation networks vary considerably across Maryland's jurisdictions. Many, if not most, do not include every mode listed below. In addition, the level of analysis of existing transportation facilities may be considered required, or simply suggested, based on the scale or intensity of facility use and the specific needs of each jurisdiction.

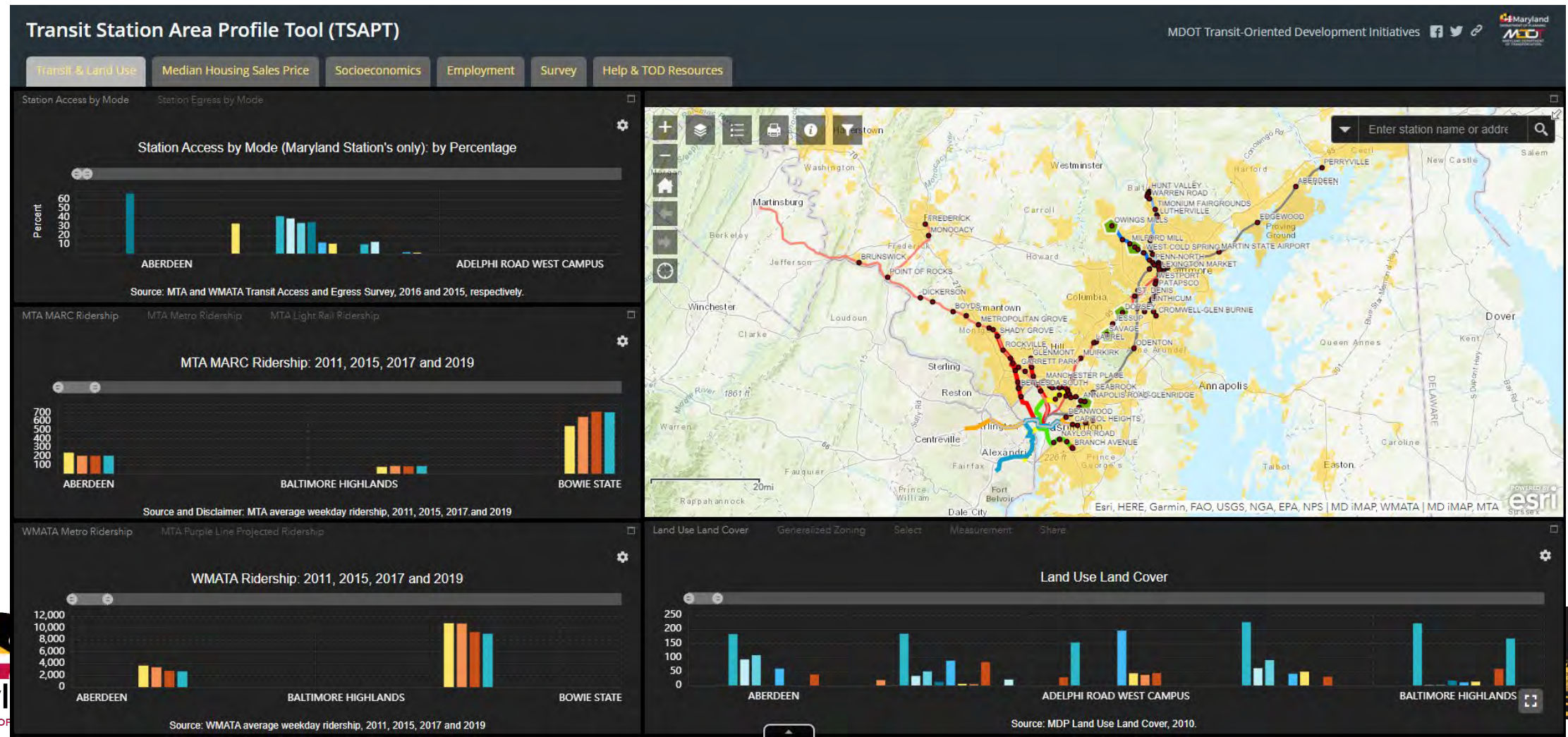
- ☐ General (Non-mode specific)
 - ☐ Growth trend analysis including population, households, jobs, redevelopment opportunities, etc.
 - **Key demographics and economic factors:** demographics, transportation, workforce, etc.
 - Vulnerable Population and Underserved Communities: data and maps for low-income, minority, disabled, and elderly population and communities
 - [EPA's EJSCREEN](#)
 - [Vulnerable Population Index](#) (Baltimore Region)
 - [Equity Emphasis Areas](#) (D.C. Region)
 - ☐ General transportation information including congestion, reliability, and traffic volume by state and county
 - Big Picture: [County Transportation Profile Dashboard](#)
 - [Marylandmaps.arcgis.com](#)
 - ☐ Mode share percentages [American Community Survey (ACS)]
 - [MDP's ACS 5-Year Estimates for Maryland Jurisdictions](#)
 - ☐ Transportation affordability (average % of household income spent on transportation)
 - [H + T Index](#): Accounts for the combined costs of housing and transportation based on a location
 - ☐ Vehicle miles traveled (VMT) trends (total and per capita) [1]

Snapshot Maryland: Transportation Planning Dashboard



PLANNING'S ECONOMIC DEVELOPMENT IMPLEMENTATION EFFORTS

- Transit Station Area Profile Tool



PLANNING'S ECONOMIC DEVELOPMENT IMPLEMENTATION EFFORTS

- Planning Tools for Transit-Oriented Development (TOD)
 - TOD Web resources on benefits, potential and other guidance
 - TOD Policies and Programs at local, region, state and federal level
 - TOD Best Practices
- TOD Hub (tod.maryland.gov) is an inter-agency collaboration to promote TOD in Maryland

TOD in Maryland

- Planning Tools for TOD
- Transit Station Area Profile Tool
- Why TOD
- TOD Potential in Maryland
- State Government Roles

Policies & Programs

- Local TOD Policies
- Maryland TOD Policies
- WMATA TOD Policies
- Federal TOD Policies

Best Practices

- Planning, Zoning and Development Review
- Building Diversified Communities

TOD in Maryland

- Planning Tools for TOD
- Transit Station Area Profile Tool
- Why TOD
- TOD Potential in Maryland
- State Government Roles

Policies & Programs

- Local TOD Policies
- Maryland TOD Policies
- WMATA TOD Policies
- Federal TOD Policies

Best Practices

- Planning, Zoning and Development Review
- Building Diversified Communities

Other Resources

- Links to other TOD resources

Planning Tools for Transit-Oriented Development

Maryland has encouraged development near transit stations since the Washington Metro system was built in the 1970s. Transit-Oriented Development (TOD) requires more than locating near transit. A properly designed TOD creates a walkable, dense, mixed-use environment and is supported by an efficient transportation system.

TOD provides an opportunity to leverage smart growth strategies to encourage economic development, counter sprawl and maximize the return on transit investment.

The Maryland Department of Planning has created a comprehensive online planning and implementation resource to support state and local TOD efforts. The online resource provides tools for planners, elected officials, real estate professionals and the public interested in advancing TOD in their jurisdictions. The [Transit Station Area Profile Tool](#) provides users with station area demographics, employment and housing sales data, transit use and land use and development projects. The Planning Tools for Transit-Oriented Development website contains information on TOD policies, programs, best practices and implementation efforts.

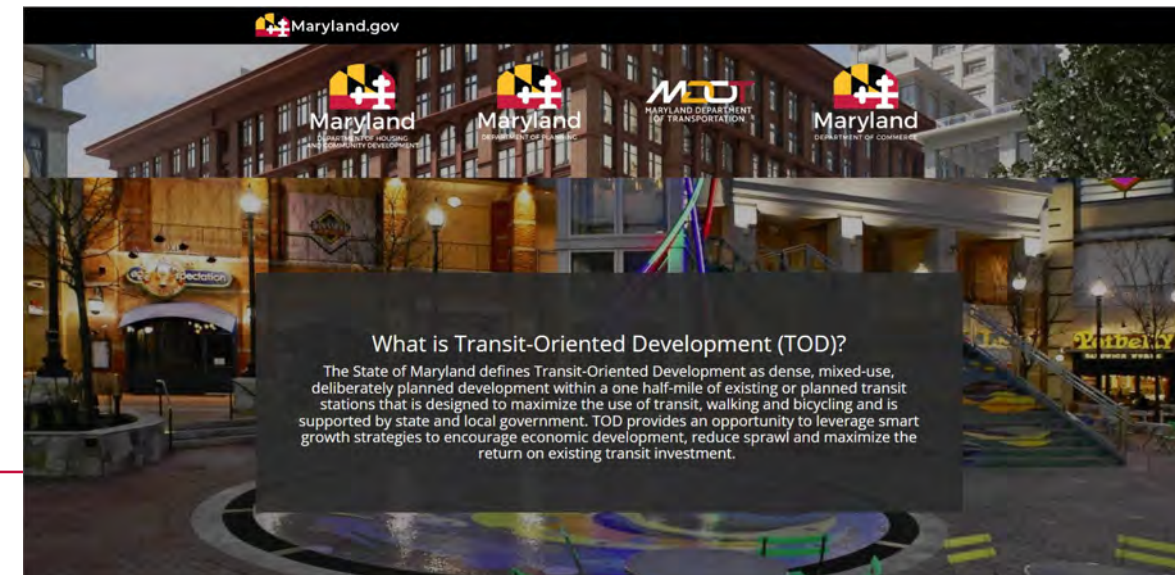
MDP's TOD work makes up the 30th installment in MDP's series of [Models & Guidelines](#) documents.

Go to the Maryland Department of Transportation (MDOT) [website](#) for information about state TOD programs, state-designated TOD projects and TOD opportunities on MDOT-owned properties.

M&G 30

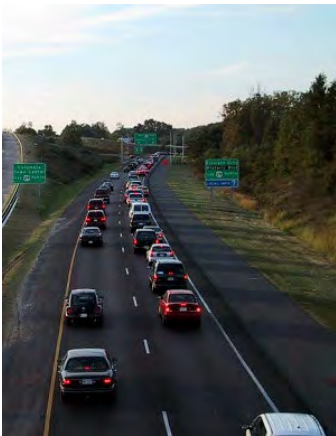
Planning Tools
for
Transit
Oriented
Development

Models &
Guidelines
Managing
Maryland's
Growth



PLANNING'S ECONOMIC DEVELOPMENT IMPLEMENTATION EFFORTS

- Transportation Element Checklist & Technical Assistance
 - Planning and the Maryland Department of Transportation developed a Transportation Element Checklist as a resource for jurisdictions in the early stages of transportation planning to update their comprehensive plan transportation element
 - Checklist includes links to potential transportation data sources



Data Table at the bottom of this document and are highlighted in **green font**. The table has some additional data sources and can serve a quick reference sheet. Best practices or resource guides are noted in call out boxes where available. Notes and suggestions are indicated by **red font**. Contacts are also provided for many data sources, but if not available below, feel free to contact Joe Griffiths at joseph.griffiths@maryland.gov with any questions.

Note: Some sections of this checklist may not apply to every comprehensive plan, as transportation networks vary considerably across Maryland's jurisdictions. Many, if not most, do not include every mode listed below. In addition, the level of analysis of existing transportation facilities may be considered required, or simply suggested, based on the scale or intensity of facility use and the specific needs of each jurisdiction.

☐ General (Non-mode specific)

- ☐ Growth trend analysis including population, households, jobs, redevelopment opportunities, etc.
 - **Key demographics and economic factors:** demographics, transportation, workforce, etc.
 - Vulnerable Population and Underserved Communities: data and maps for low-income, minority, disabled, and elderly population and communities
 - [EPA's EJSCREEN](#)
 - [Vulnerable Population Index](#) (Baltimore Region)
 - [Equity Emphasis Areas](#) (D.C. Region)
- ☐ General transportation information including congestion, reliability, and traffic volume by state and county
 - Big Picture: [County Transportation Profile Dashboard](#)
 - Marylandmaps.arcgis.com
- ☐ Mode share percentages [American Community Survey (ACS)]
 - [MDP's ACS 5-Year Estimates for Maryland Jurisdictions](#)
- ☐ Transportation affordability (average % of household income spent on transportation)
 - [H + T Index](#): Accounts for the combined costs of housing and transportation based on a location
- ☐ Vehicle miles traveled (VMT) trends (total and per capita) ⁽¹⁾



PLANNING'S ECONOMIC DEVELOPMENT IMPLEMENTATION EFFORTS

- **Statewide Building Permit Reporting System** (New Initiative Underway!)
 - Work with existing building permit collection systems to share data
 - In process with 17 counties and 6 municipalities
 - Reporting System will include:
 - Number of New Units (single family vs multifamily)
 - Total Value of Construction (residential vs nonresidential)
 - Type of building permit activity – new vs additions/alterations/renovation
 - Depending on Local Data Availability
 - Duration of Construction – Permit to Use & Occupancy Certificates
 - Type of Residential Units being permitted (New and AARs – detached, townhouse, etc.)
 - Number of Bedrooms and Baths in New Units
 - Type of Water and Sewer Service
 - Total Floor Area of new construction
 - Dashboard and Interactive Map of select statewide information



TOPICS: COMMUNITY DEVELOPMENT



**Creating Workforce/
Affordable Housing**



**Protecting Historic
and Cultural
Resources**



**Creating Quality
Places**

PLANNING COMMUNITY DEVELOPMENT IMPLEMENTATION EFFORTS

- Maryland InfoPortal
- Housing Element Models & Guidelines Website
- Maryland Historic Revitalization Tax Credit Program
- MEDUSA - Maryland's Cultural Resource Information System
- Compatible Use and Development with Military Installations Website & Handbook (New Initiative Underway!)
- Maryland's New Growth Model Toolkit (New Initiative Underway!)



PLANNING COMMUNITY DEVELOPMENT IMPLEMENTATION EFFORTS

- Maryland InfoPortal
 - One stop for finding financial and non-financial assistance offered by Maryland state government agencies on the web.
 - Planning's State Clearinghouse hosts this digital catalog and coordinates the timeliness and accuracy of the information with a network of more than 80 sponsoring agencies. Filterable by:
 - Financial Assistance & Direct Development
 - Non-Financial Assistance
 - Technical Assistance

Maryland InfoPortal

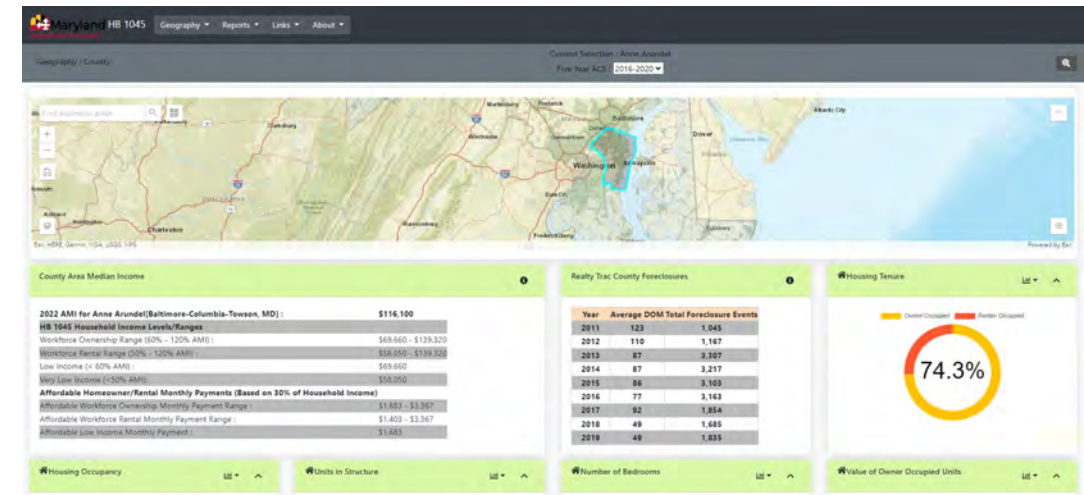


A Digital Catalog of State Assistance Programs



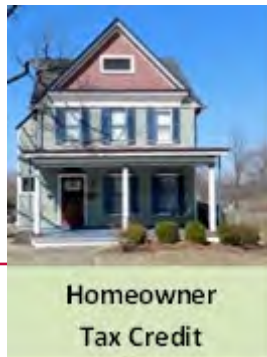
PLANNING COMMUNITY DEVELOPMENT IMPLEMENTATION EFFORTS

- Housing Element Models & Guidelines Website
 - Housing Data Dashboard
 - Housing Legislative Mandate Background
 - Housing Self-Assessment Guide
 - Planning Practices
 - Model Housing Element Development
 - Common Practices
 - Best Practices
 - Affordable Housing Resources
 - Statewide Housing Needs Assessment



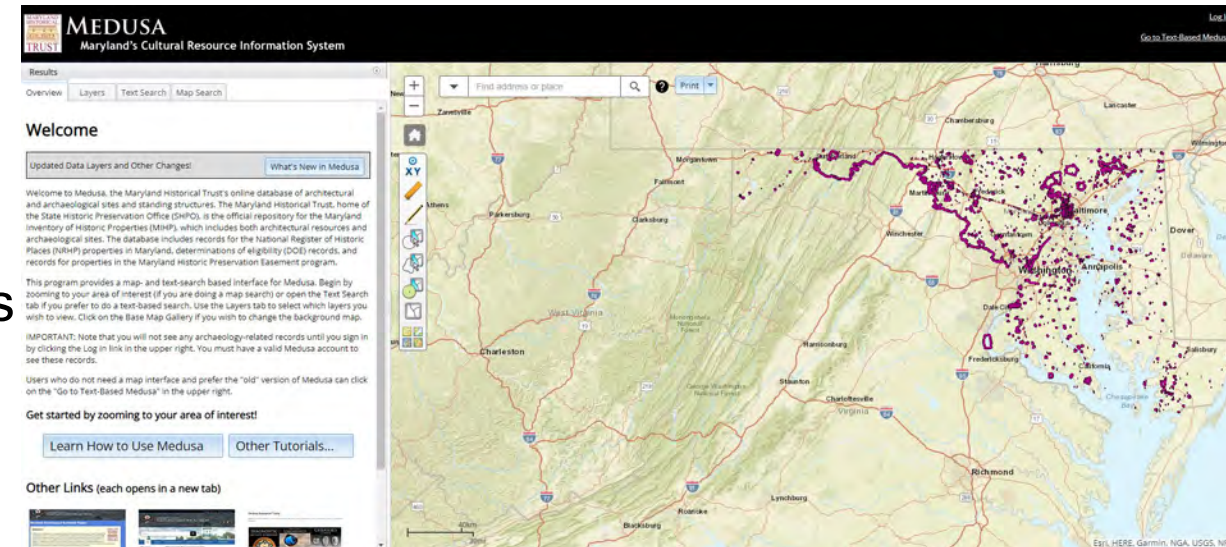
PLANNING COMMUNITY DEVELOPMENT IMPLEMENTATION EFFORTS

- Maryland Historic Revitalization Tax Credit Program
 - Purpose of state and federal preservation tax incentives is to encourage private sector investment in the rehabilitation and re-use of historic buildings and to promote investment in local economies.
 - MHT administers three tax credit programs:
 - Homeowner
 - Competitive Commercial
 - Small Commercial



PLANNING COMMUNITY DEVELOPMENT IMPLEMENTATION EFFORTS

- MEDUSA - Maryland's Cultural Resource Information System
 - The online database of architectural and archaeological sites and standing structures
 - Database includes records
 - National Register of Historic Places properties
 - Determinations of eligibility (DOE) records
 - Records for properties in the Maryland Historic Preservation Easement program.
 - Searches via map or text



PLANNING COMMUNITY DEVELOPMENT IMPLEMENTATION EFFORTS

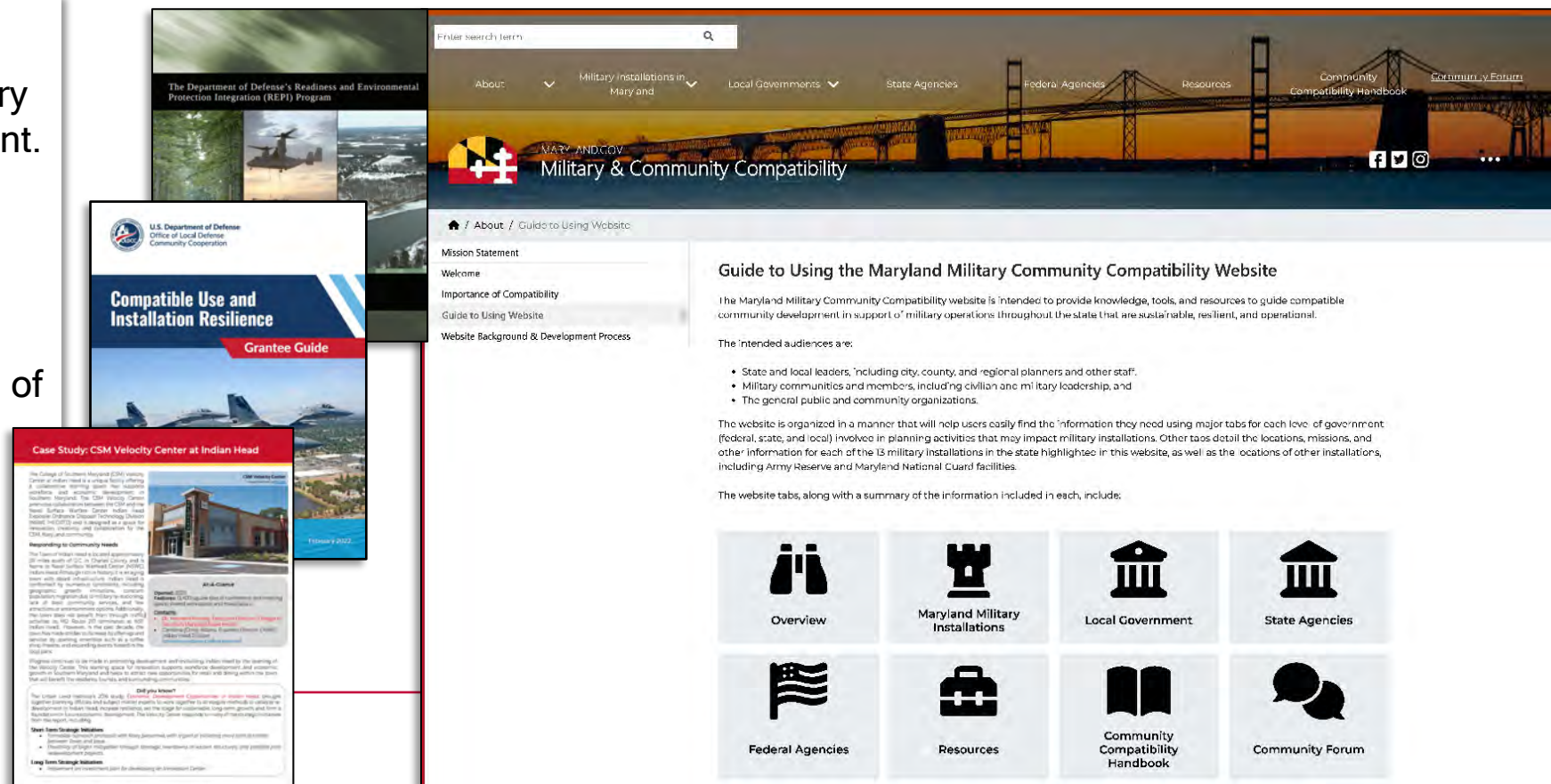
- Compatible Use and Development with Military Installations Website & Handbook (New Initiative Underway!)

Purpose

- Illustrate economic impact of the military in MD and build community engagement.
- Provide communities with tools and resources to ensure compatible use.

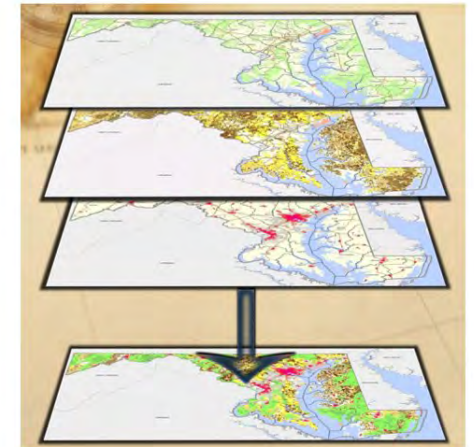
Resource Examples

- Installation overviews and descriptions of existing programs and partnerships in place
- Best practices for communication, coordination, and compatible land use
- Compatible Use Study guidance
- Local ordinance development guidance
- Compatibility mapping review tool

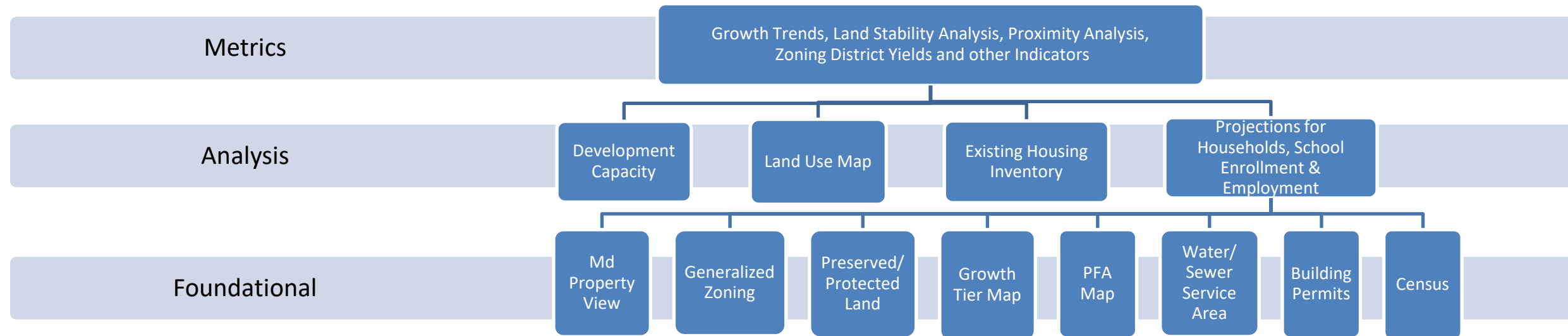


PLANNING COMMUNITY DEVELOPMENT IMPLEMENTATION EFFORTS

- Maryland's New Growth Model Toolkit (New Initiative Underway!)
 - Updating the department's old model to include:
 - Detailed development capacity information for local scenarios
 - Enhanced Generalized Zoning and Land Use Map data
 - Validated using 2020 Census data
 - Includes Existing Housing Inventory Estimates
 - Informed by local building permit information



MARYLAND'S NEW GROWTH MODEL TOOLKIT



VISIT THE PROJECT WEBSITE AND DIGITAL RESOURCE CENTER

ABetter.Maryland.gov

Questions, please contact Chuck Boyd (chuck.boyd@maryland.gov)
or Joe Griffiths (joseph.griffiths@maryland.gov)



Smart Growth Subcabinet Presentation



Governor's Challenge to Cabinet

- ~~Good~~ **Great** Customer Service
- Better Coordination with Local Jurisdictions
- Work Together Across Departments and Agencies
- Serve All Marylanders and All of Maryland



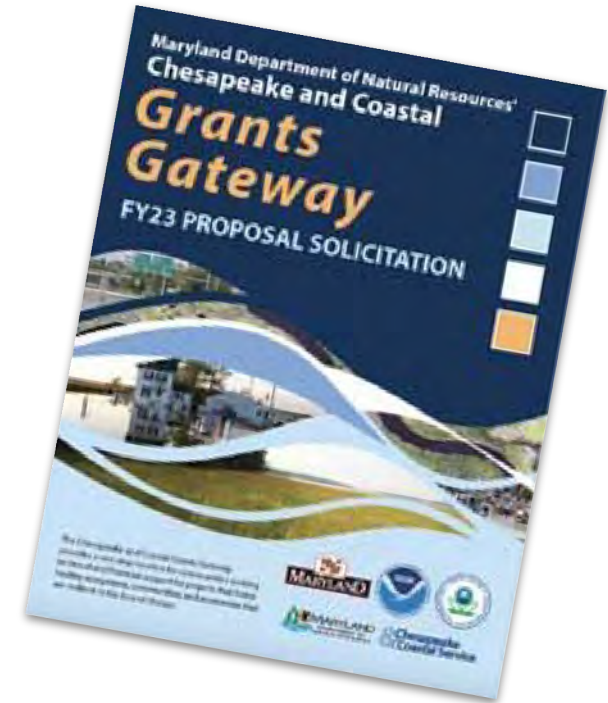
DNR Grants

Grants Gateway

- Single point of entry
- Over 3,000 projects and \$346.5M invested
- Bay Restoration
- Resilience Through Restoration
- Waterway Improvements

Outdoor Recreation & Parks

- Program Open Space
- Community Parks & Playgrounds
- Local Parks & Playgrounds Infrastructure
- **Record Investment!**



State & Local Project Examples



Rocky Gap
SP RFPs



Westminster
Wakefield Valley



Balt City
Leon Day Park



Harford-Ma & Pa Trail



Edmonston
Fitness Stations



Talbot - Douglass Park



Leonardtown
Waterfront



Pocomoke -
Snow Hill Connector

Economic Opportunities

Outdoor Recreation & World Class Events

- Office of Outdoor Recreation
- Retail, Manufacturing, Tourism
- Fair Hill 5* Equestrian Event
- USA Cycling Mountain Bike Championship

Resource Based Industries

- Seafood
- Forestry

Training the Next Generation of Workers





Smart Growth Subcabinet Public Forum

Update on Animal Health Lab and HPAI Response

Secretary Joe Bartenfelder

July 20, 2022



HIGH PATH AVIAN INFLUENZA (HPAI)



- Highly infectious, deadly for poultry
- Spread primarily from wild birds
- First case on Delmarva – Feb. 23
- Six cases total
 - Two in Cecil County
 - One in Queen Anne's County
- Swift, coordinated response from MDA, DDA and USDA



BREAKING DOWN SILOS



SALISBURY ANIMAL HEALTH LAB



SALISBURY ANIMAL HEALTH LAB



2016 – VISIT TO OLD LAB FACILITY



SALISBURY ANIMAL HEALTH LAB



DEMOLITION OF OLD LAB



SALISBURY ANIMAL HEALTH LAB



NEW LAB CONSTRUCTION



SALISBURY ANIMAL HEALTH LAB



JUNE 2022- GRAND OPENING





THANK YOU



Maryland Energy Administration

Small agency with a large mission: to promote affordable, reliable, cleaner energy for the benefit of all Marylanders.

Presentation to the Maryland Smart Growth Subcabinet Public Forum

July 20th, 2022



ROLES OF MEA

- State Energy Office: Energy Policy & Programs
- Strategic Energy Investment Fund (SEIF) Administrator
- Represents Governor and State before the PSC
- Energy Security and Assurance



Maryland
Energy
Administration

Priorities

- Advance energy costs as a primary concern (EmPOWER, MCCC, CSNA)
- In partnership with multiple private sector stakeholders, secure federal funding for geological survey of underground geology surrounding the Lehigh Cement plant
- Achieving equity in terms of energy choices across the state, specific emphasis on promoting equitable access to affordable and reliable energy by investing in communities and sectors that have not proportionally benefitted from clean energy investment
- Bolster Energy Assurance in Maryland - Liquid Fuel Plan (**Completed**) and Energy Security Plan under development
- Transform markets for clean energy and energy efficiency by deploying targeted programs that reduce the need for long term financial support
- Attract federal funding and investment from IIJA/BIL legislation, including formula grants and partnering with organizations and entities on competitive grants

Bolstering Maryland's Resilience to Energy Disruption

- Engaging the Federal Energy Regulatory Commission, Maryland Public Service Commission and others on transmission and distribution issues.
- Foster resilience in critical infrastructure, vulnerable communities and economic priorities
- Over \$20 million invested since beginning of Governor Hogan's Administration



Images by Montgomery County, MD Government

Frostburg University Microgrid

\$100,000 planning grant under the Resilient Maryland feasibility and pre construction program and \$750,000 follow-up capital award to advance physical infrastructure.

- Microgrid for part of campus
- Solar, energy storage, fuel cell and other technologies
- Safeguards students and community from energy disruption
- Contributes to Campus sustainability goals
- Provides intern opportunities and included in energy curriculum



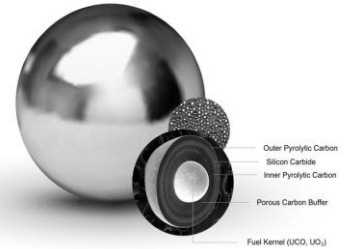
Maryland
Energy
Administration

Small Modular Reactors (SMRs)

- A key policy imperative for the state is to open up new possibilities for electricity generation, typically with new technologies
- To that end, we have a new partnership with X-Energy and Frostburg State University
- X-Energy is a manufacturer of new advanced small modular reactors (SMRs) and is based in Rockville, Maryland



Maryland
Energy
Administration



Somerset County Natural Gas Expansion

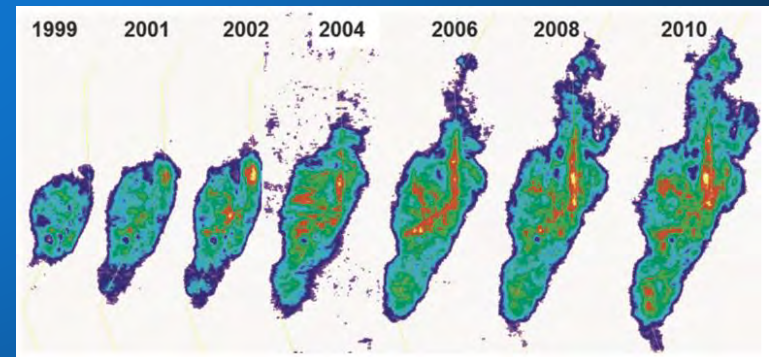
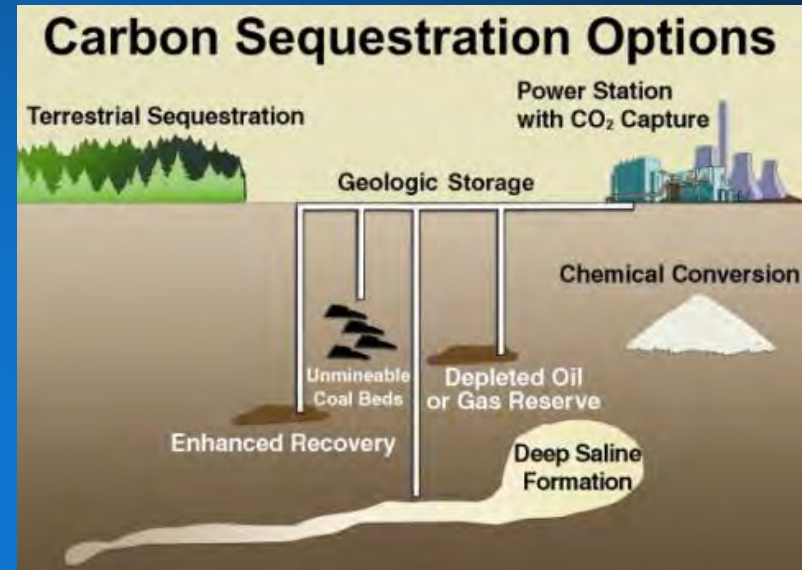
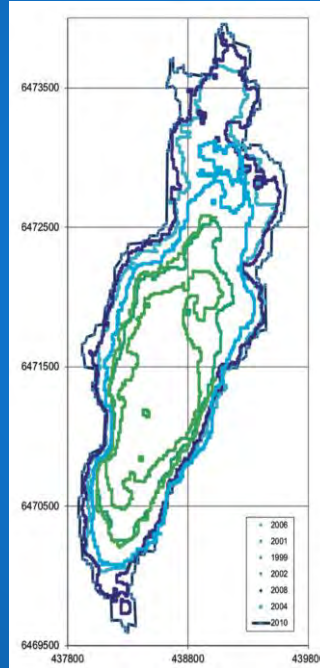
- Deploying resources from the Maryland Gas Expansion Fund (MGEF) to expand clean natural gas to areas of the state that lack access
- Enable the retrofit of two major institutions, the University of Maryland Eastern Shore (UMES) and Eastern Correctional Institute (ECI)
- 66 percent reduction in greenhouse gas emissions and 99 percent reduction in particulates
- Enables other businesses and residents to obtain access bolstering economic development opportunities



Maryland
Energy
Administration

Energy Policy, Carbon Capture, Utilization and Sequestration (CCUS)

- Continuing to open up new avenues for the state
- We are working on securing federal funding for carbon sequestration in a partnership with several regional partners, centered on the Lehigh Cement Plant (Lehigh Hanson, Battelle, MEA, MGS, Morgan State Univ., Lahmont Doherty Earth Observatory, Enbridge)
- A carbon sequestration site in Maryland opens several decarbonization opportunities for both industrial facilities and power plants



Low-to -Moderate Income Energy Efficiency




- Funds to local governments and community organizations to upgrade homes of LMI Marylanders and buildings that benefit them.
- Over \$65 million invested since FY2016
- Low income solar in addition to efficiency added in FY22 and continuing into FY23
- \$17 million for FY 23
- Over 14,000 buildings retrofitted
- Nationally recognized program

Streetlight and Outdoor Lighting Efficiency

- Pilot program launched in FY22, to be continued in FY23
- Emphasis on owner operated lights (municipal, institutional)
- Builds on grant from DOE to provide direct technical assistance and to assess need.
- 50 to 70% reduction in energy consumption while improving community aesthetics and lowering maintenance.
- \$1.6 million in FY22 Awards to replace over 6,200 fixtures



Decarbonizing Public Schools

- 
- Pilot program launched in FY22, to be continued in FY23
 - Partnered with Maryland Interagency Commission on School Construction
 - Financially support the development of capacity within Local Education Agencies (school districts) to develop energy management capabilities and long-term planning for net zero energy schools
 - Helps address recent legislative directives for LEAs to publish energy policies and historic energy use data
 - Seven awards five for efficiency and energy management two for net zero planning.



Maryland
Energy
Administration

Clean Transportation

Governor Hogan's Administration:

- Introduced multiple pieces of legislation, such as the Clean Cars Act, that promote technology-neutral transportation and decarbonization.
- Signed Medium and Heavy Duty Zero Emission Vehicle MOU establishing 100% target for MH and HD sales by 2050
- Deployed over \$25 million in rebates, grants, tax credits to incentivize electric and alternative fuel vehicles

Clean Fuels Incentive Program

FY22 Awardees

Nearly \$6M in grants to leverage over \$24 million in investment:

- UPS 50 compressed natural gas step vans
- Highland Electric Fleets 4 electric school buses on behalf of Baltimore City Public Schools
- Swan Transportation 1 electric school bus
- Sysco - 10 Class 8 electric tractor and trailer vehicles
- Blue Triton - 25 propane delivery trucks
- Chaney Enterprises 6 electric concrete mixer trucks
- Ecological Services - 20 compressed natural gas refuse trucks



Maryland
Energy
Administration

Encouraging Innovation

OPEN Energy Program

FY22 Grant Awards:

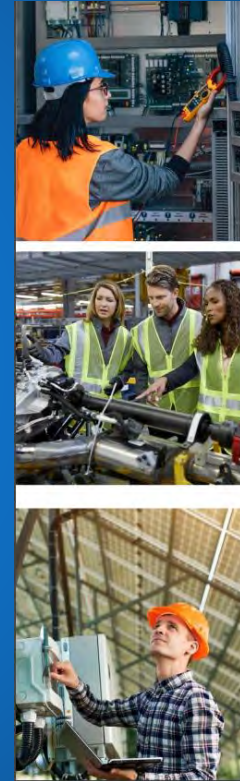
- Regional Manufacturing Institute of Maryland - Energy and Sustainability Support
- Energetics/E-Fishing Vessel Pilot
- Evergreen Heritage Center - Western Maryland Clean Energy Education Park
- Maryland Environmental Services - Eastern Shore Landfill Gas to Energy



Maryland
Energy
Administration

Clean Energy Industry Report

- Prior to the pandemic, the clean energy sector accounted for 1 in 10 new jobs in Maryland
- Clean energy jobs pay higher than statewide average wages
- Energy efficiency and clean energy generation are the largest and second largest sources of clean energy jobs
- Wind energy sector jobs grew 60% (370 jobs) from 2019 to 2020
- Construction and professional services had the highest amount of clean energy jobs



Maryland 2021 Clean Energy Industry Report

June 2022





Maryland
Energy
Administration

30th Anniversary

**Celebrating 30 years of
clean energy partnerships**

For more information on the reach of MEA programs and how we support other state agencies, please review the FY21 Strategic Energy Investment Fund (SEIF) report online (two volumes):

[Vol. 1:
Report and Appendix A](#)
[Vol. 2:
Additional Appendices](#)

Find prior year's reports [here](#)

Mary Beth Tung, Ph.D., Esq.

Director

Marybeth.tung@Maryland.gov | C: 443-938-3331

Energy.Maryland.gov

MEDIA INQUIRIES:

contact jahmai.sharp-moore@maryland.gov
443-694-3651 directly for quotes.

[#MDEnergy](#)

[#MDEnergyAdministration](#)

[#MarylandEnergyAdministration](#)



Maryland
Energy
Administration

Open Forum for Elected Leaders & Planning Officials

Opportunity to discuss local government issues relating to activities that affect smart growth, development, neighborhood conservation and resource management.

(Please type your questions and comments in the question box.)



Thank You for attending the
Smart Growth Subcabinet's Public Forum

