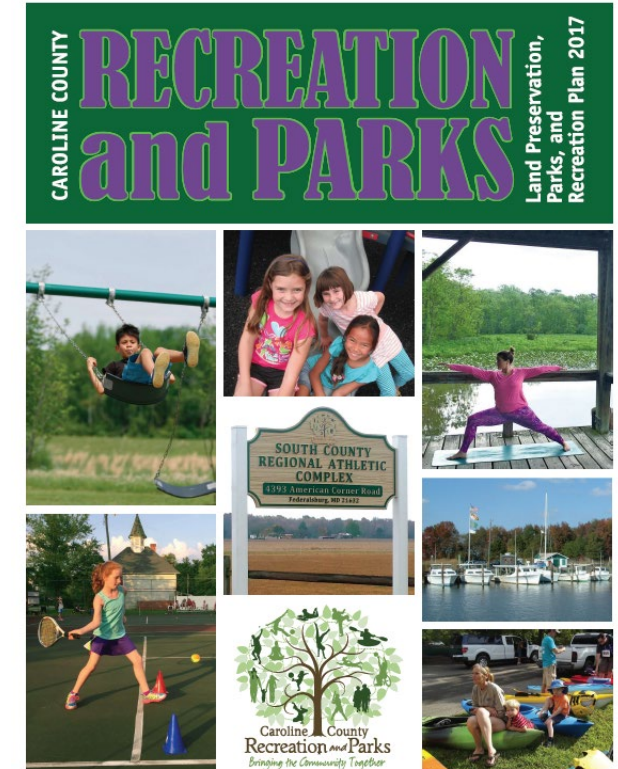


# 2022 Land Preservation, Parks, and Recreation Plan Guidelines

Planning Directors' Roundtable  
September 24, 2020

# Land Preservation, Parks, and Recreation Plans (LPPRP) Background

- LPPRPs are updated every 5 years. Upcoming LPPRP planning cycle will cover 2022-2027.
- Purpose of the Land Preservation, Parks, and Recreation Plans.
- LPPRPs as a resource to county and state leaders, and the general public.



# Natural Resource Conservation and Agricultural Preservation

- LPPRPs allow local jurisdictions to plan for improving natural resource and agricultural land preservation.
- Importance and relevance of natural resource conservation.
- Agricultural Land Preservation and The Certification of County Agricultural Land Programs.



# LPPRP Ties to State and Federal Funding Sources

- LPPRP preparation is a prerequisite for county participation in Program Open Space.
- Preparation of Maryland's statewide Land Preservation and Recreation Plan (LPRP).
- LPRP and Maryland's eligibility for the Land and Water Conservation Fund Program.



# Notable Changes for 2022



**New Park Equity  
Mapper Tool**



**Standardized  
Reporting and GIS  
Data Collection**



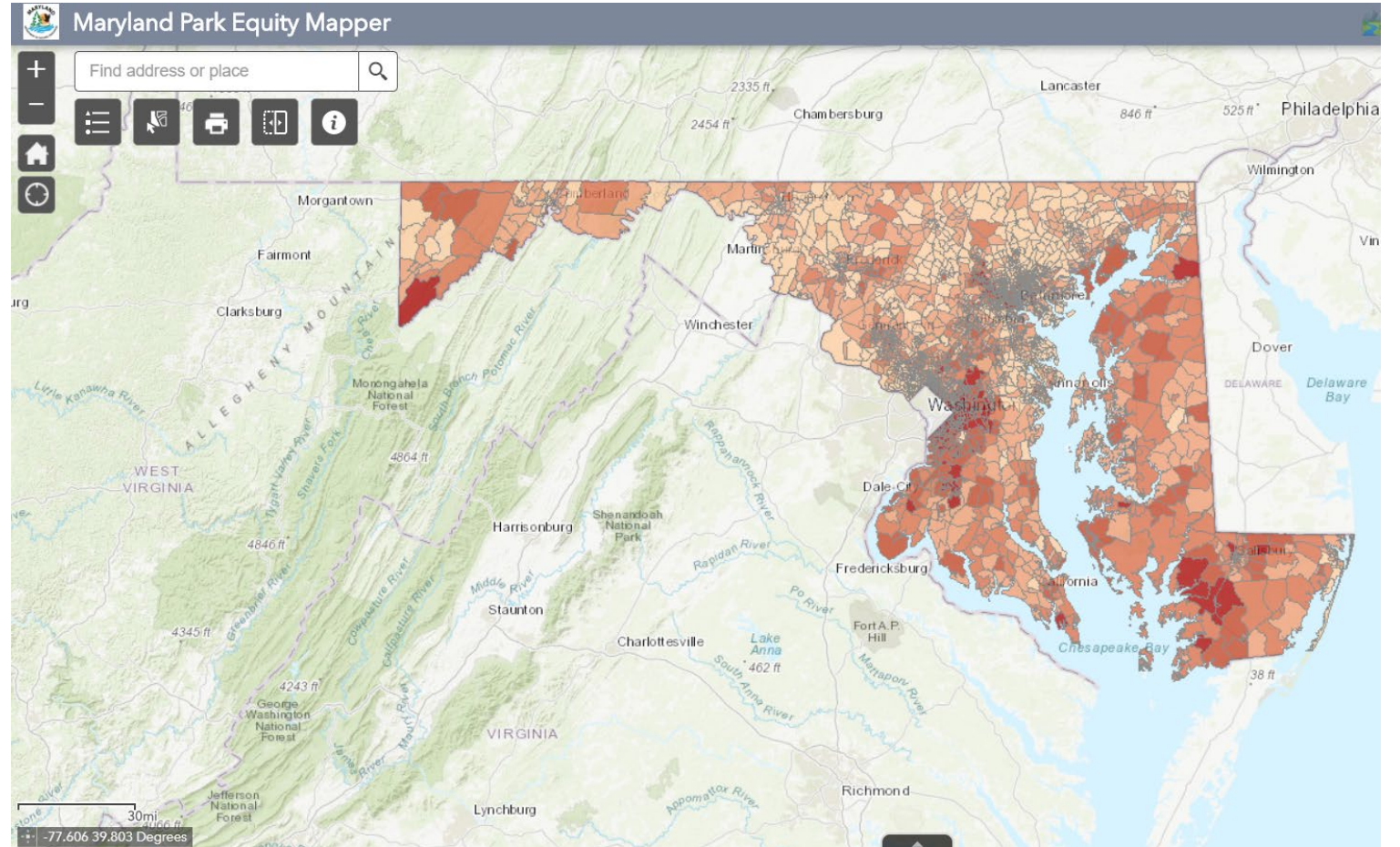
**Coordination with  
Municipalities**



**Additional  
Resources for  
Consideration**

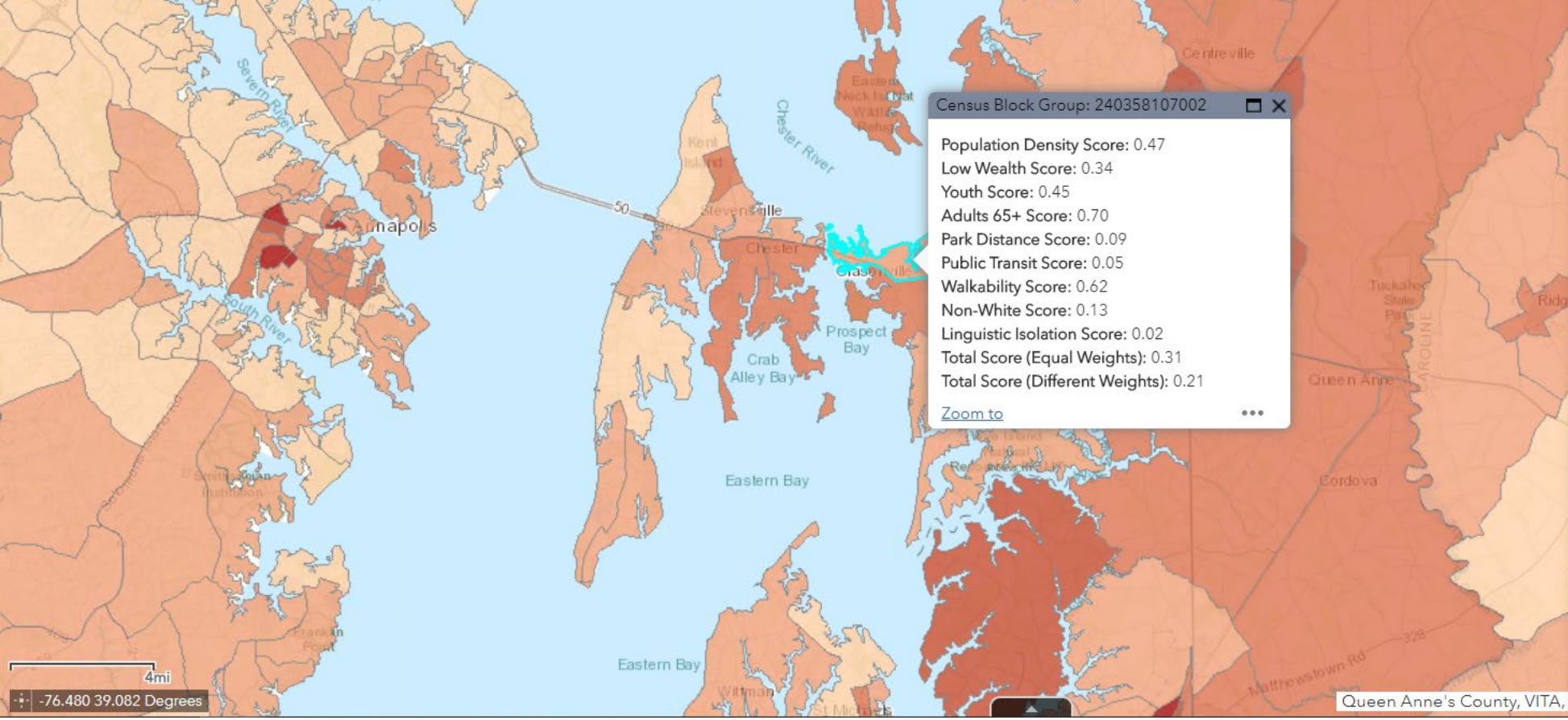
# Park Equity Mapping Tool

- Combines demographic and environmental health data to identify disparities in park access and quality.
- Data is combined into a comprehensive “park equity score” which planners can use to identify communities in need of more parks, recreation facilities, and green spaces.
- Areas with a higher combined score (darker orange) are areas with underserved populations.



Find address or place

Map navigation controls: Home, Refresh, Full Screen, Print, Layer List, Info, etc.



Census Block Group: 240358107002

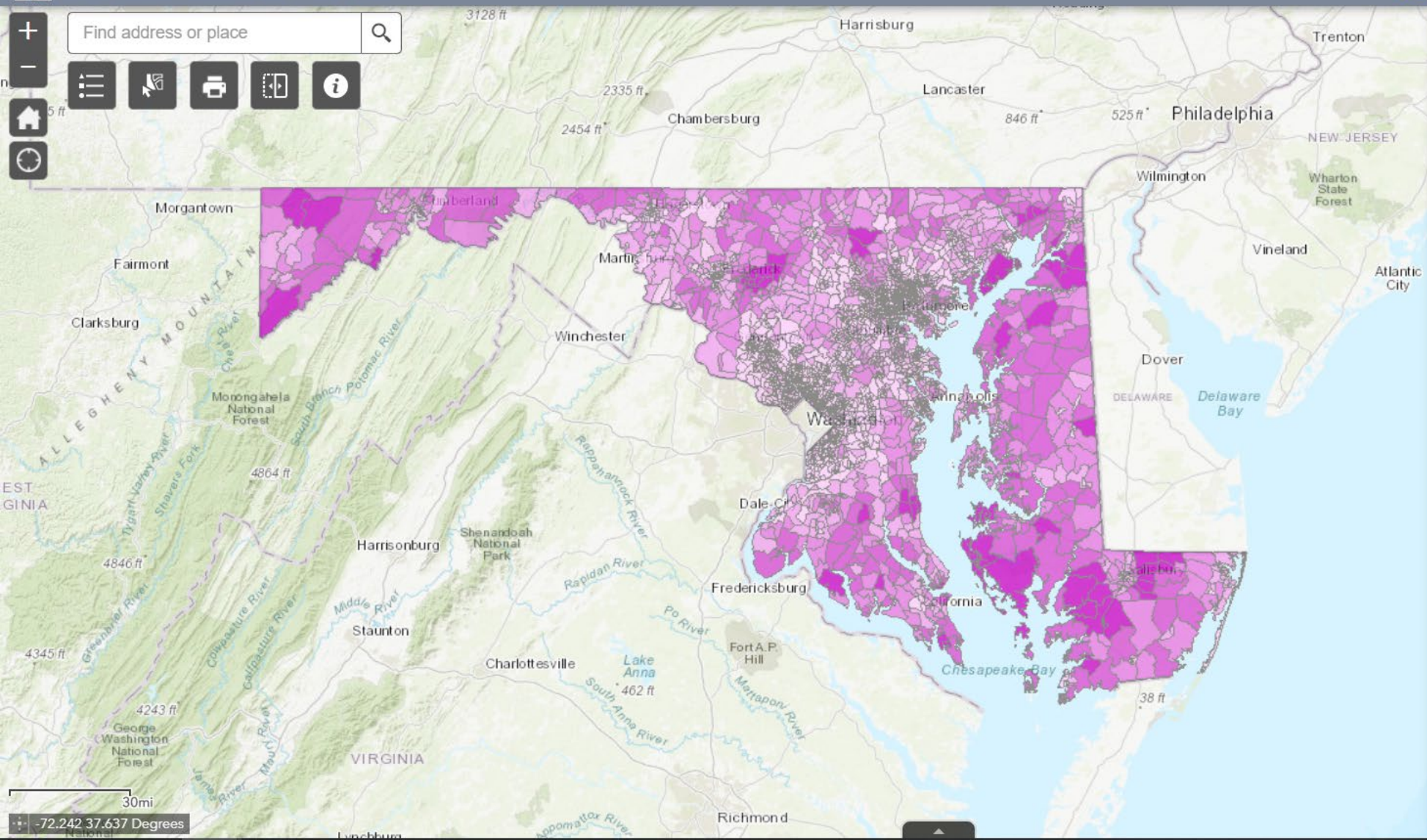
- Population Density Score: 0.47
- Low Wealth Score: 0.34
- Youth Score: 0.45
- Adults 65+ Score: 0.70
- Park Distance Score: 0.09
- Public Transit Score: 0.05
- Walkability Score: 0.62
- Non-White Score: 0.13
- Linguistic Isolation Score: 0.02
- Total Score (Equal Weights): 0.31
- Total Score (Different Weights): 0.21

Zoom to

Park Equity

Layers

- Parks
- Park Amenities
- Park Equity Total Score
  - 0.02 - 0.16 (High Equity)
  - 0.17 - 0.24
  - 0.25 - 0.32
  - 0.33 - 0.39
  - 0.40 - 0.69 (Low Equity)

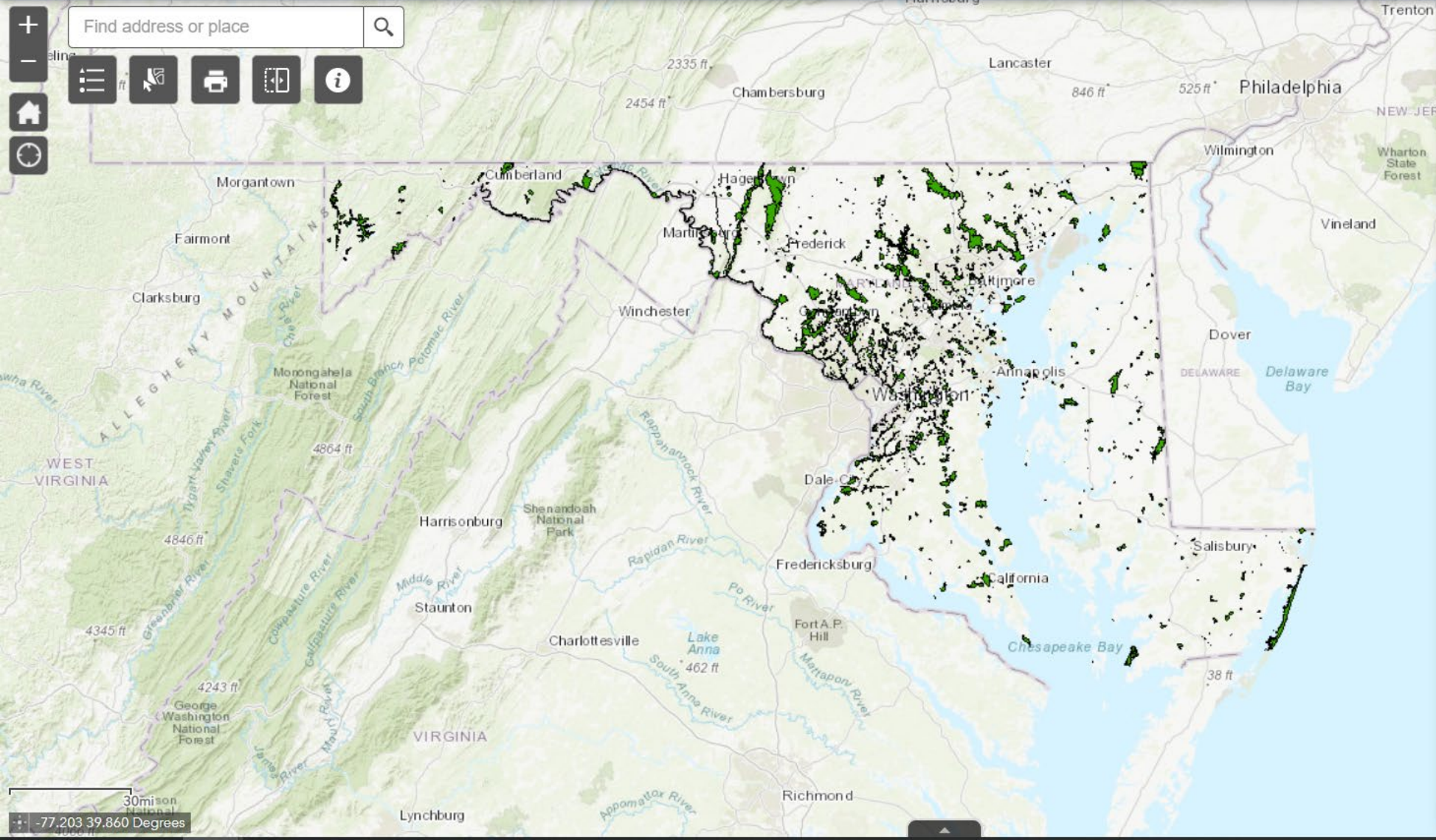


### Park Equity Context Layers

Layers

- Population Density ...
- Concentration of Households Below %185 of the Federal Poverty Line ...
- Concentration of Children Under the Age of 18 ...
- Concentration of Adults Over the Age of 64 ...
- Concentration of Non-White Population ...
- Distance to Public Park Space ...
  - 0.00 - 0.07 (Least Distance)
  - 0.08 - 0.16
  - 0.17 - 0.30
  - 0.31 - 0.52
  - 0.53 - 1.00 (Most Distance)
- Distance to Public Transportation ...
- Walkability Index ...
- Linguistic Isolation ...





### EJ Context Layers

- Combined Sewer Outfalls ...
- Wastewater Treatment Plants ...
- Solid Waste Landfill Facilities ...
- TRI Facilities ...
- Powerplants ...
- EPA Superfund Sites ...
- Railroad ...
- Health Professional Shortage Areas (HPSA) ...
- Parks ...
- Legislative Districts (EJ) ...
- 200% Federal Poverty Level ...
- USDA Low Income and Low Access ...
- Percent Hispanic and Black ...
- Income Inequality ...
- Census Tracts Demographics ...

# Standardized Reporting and GIS Data

- Wherever spreadsheet, database or inventory data is requested, GIS data will also be included.
- Land Preservation data will conform to the Chesapeake Bay Programs “Essential Protected Lands Data Standards”
- Parks Inventory data will adhere to data fields found in a provided Sample Inventory Spreadsheet.



# Coordination with Municipalities

- Language has been added requiring jurisdictions coordinate with their municipalities.
- Municipalities will be given an opportunity to review and provide comments on draft LPPRP's before they are submitted to DNR and MDP.



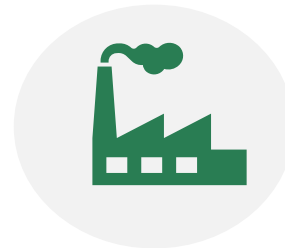
# Additional Resources for Consideration



**Climate Change and  
Sea Level Rise**



**Source Water  
Protection Areas**



**Brownfield Sites**



**Children in Nature**

# Habitat Succession from Climate Change and Sea Level Rise

- As sea levels rise, current wetland habitats will become inundated and will retreat to upland areas.
- Counties can download “wetland adaptation areas” data from DNR’s GreenPrint website.



# Source Water Protection Areas

- MDE's Source Water Assessment Program (SWAP) was created to assess the vulnerability to contamination of public drinking water sources.
- Counties can use MDE's GIS data to analyze source water protection areas and decide if those areas may be a priority for local land preservation.



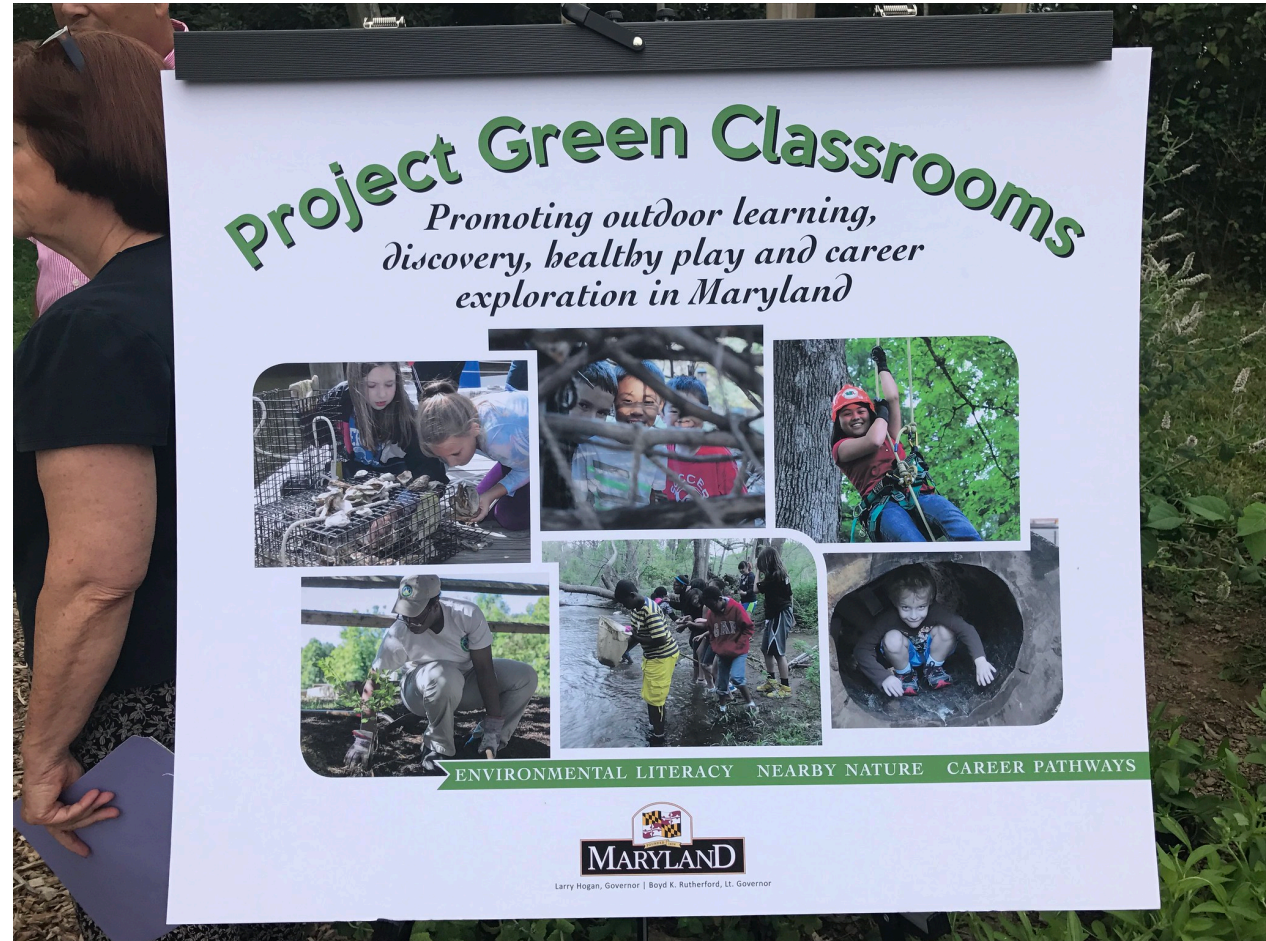
# Cleaning Up Brownfield Sites for Recreational Use

- The EPA will provide grants and technical assistance for cleaning up and reusing these sites.
- MDP can assist counties in taking advantage of these funding opportunities through Brownfield Redevelopment Assistance Program.



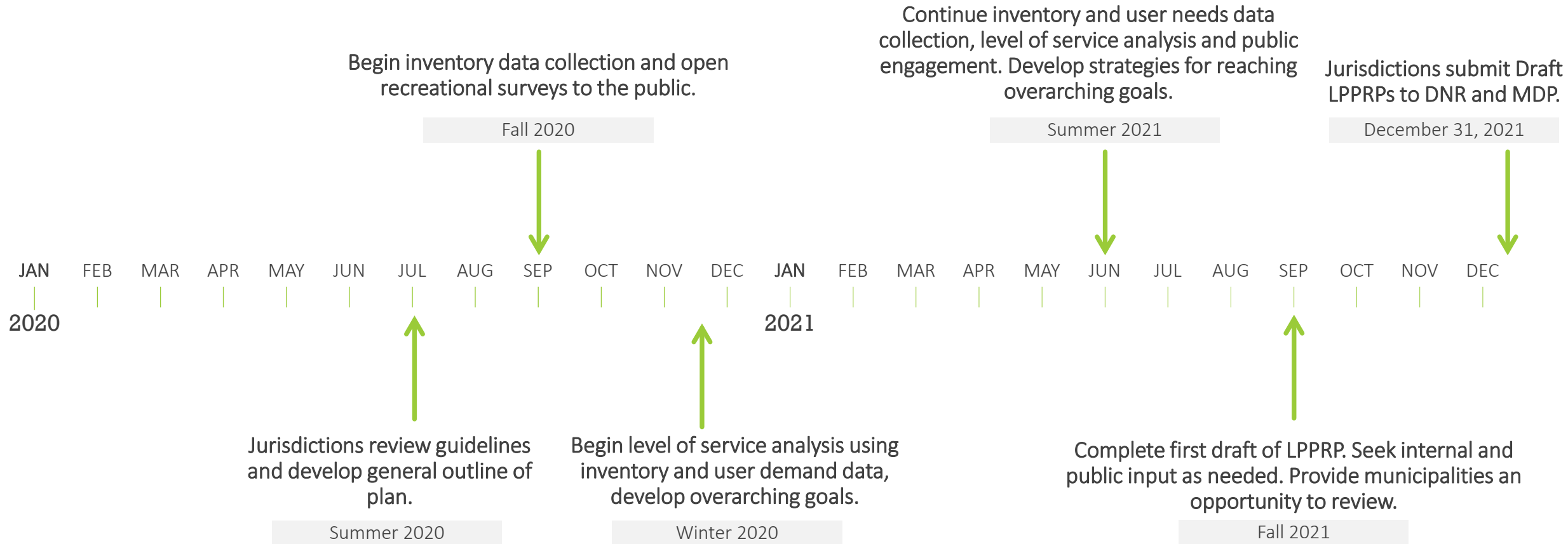
# Children in Nature

- In 2017 an executive order was signed establishing Project Green Classroom.
- Public parks play an important role in getting classrooms and families outside to experience natural areas.
- Goals designed to support increased access for children and students to natural areas.







# 2022 LPPRP Plan Development Timeline





# Thank You

Andrew Mengel, DNR 

443.569.2827 

[andrew.mengel@maryland.gov](mailto:andrew.mengel@maryland.gov) 