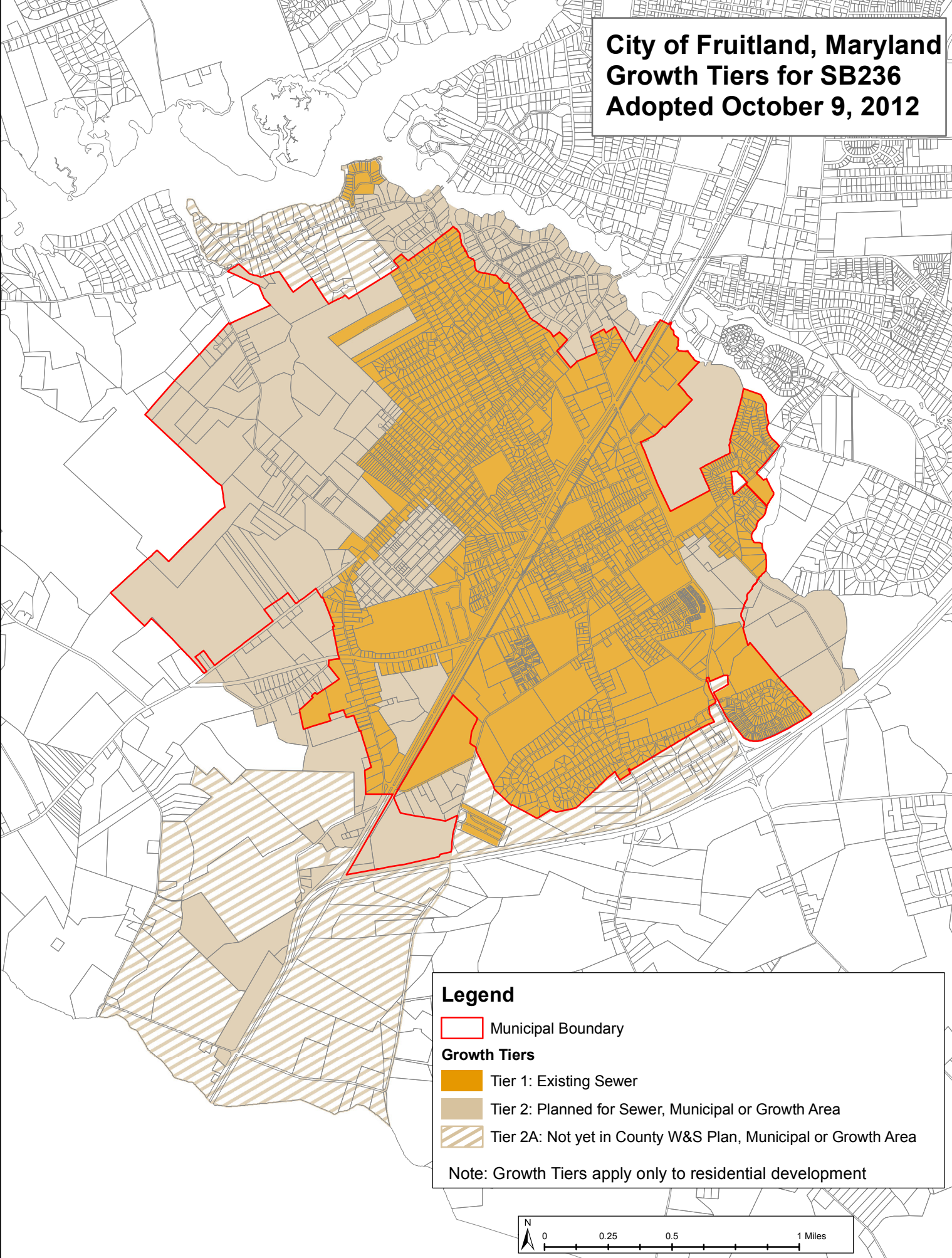






**City of Fruitland, Maryland
Growth Tiers for SB236
Adopted October 9, 2012**



Legend

-  Municipal Boundary
- Growth Tiers**
-  Tier 1: Existing Sewer
-  Tier 2: Planned for Sewer, Municipal or Growth Area
-  Tier 2A: Not yet in County W&S Plan, Municipal or Growth Area

Note: Growth Tiers apply only to residential development

