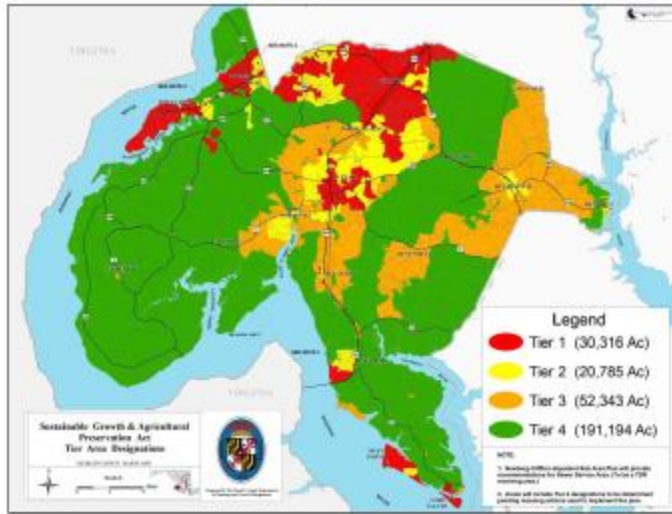


Figure 3-7 Tier Map



Growth rate

As noted in Chapter 2, the County's average annual rate of growth was 1.97 percent, higher than its 1.8 percent rate between 1990 and 2000, and from 2004 to 2014 was 1.35 percent.

While Charles County's growth has remained within its objective, during the Comprehensive Plan process several participants raised the issue of the County's growth rate. Some participants stated the rate was too high, while others stated that the rate has slowed significantly since the economic recession began in 2007. The County Commissioners' actions to curb sprawl, reduce the development district size and limit densities in sensitive natural resource lands is anticipated to result in a slower rate of growth than in previous decades, to approximately 1% or less – which is the intent of this plan. This should be monitored during the course of this plan to determine the effect of these new growth management land use policy provisions as it impacts the rate of growth over time.