



# **Reuse Roleplay Workshop: Creating a Collaborative Brownfields Reuse Strategy**

**Presented by: Becca Phillips  
Lydia Work  
Anna Leisher**



# Introductions



**Becca Phillips, Outreach & Education  
Coordinator  
Mid-Atlantic TAB**



**Lydia Work, Principal Chemist  
Montrose Environmental**



**Anna Leisher, Planner  
Montrose Environmental**



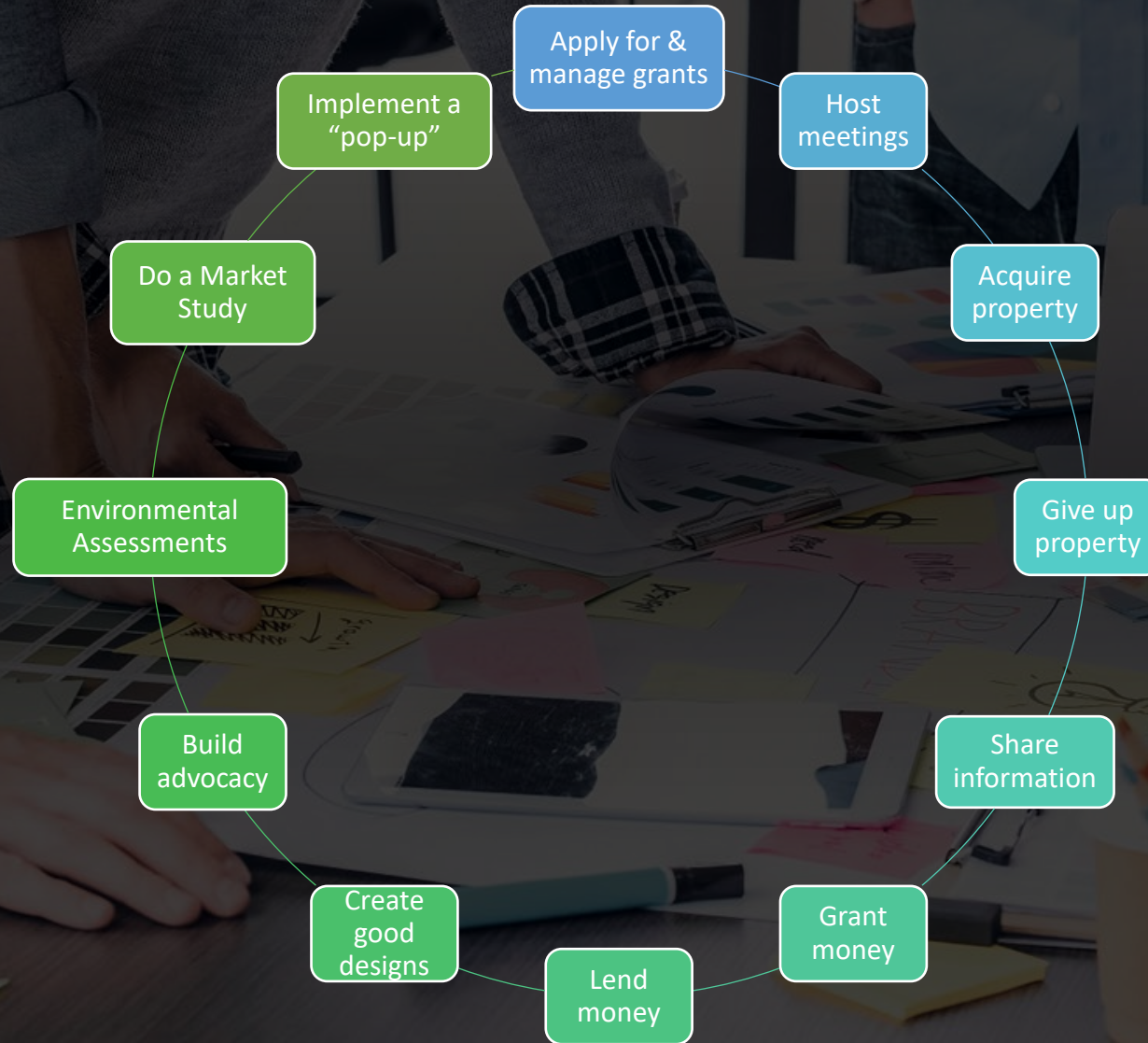
# Session Overview:

- ❖ **Presentation – Brownfield Stakeholders**
- ❖ **Project Introduction**
- ❖ **Stakeholder Roleplay Activity in Small Groups**
- ❖ **Small Group Report Out**



# Brownfields Stakeholders: Who Cares and Who Helps?

You need someone who can...





## **Brownfields Stakeholders - What they bring:**

**Expertise**

**Passions**

**Personal  
Interests**





A group of people in a meeting room, leaning over a table covered with papers, sticky notes, and a laptop, engaged in a collaborative activity. The scene is dimly lit, with the primary light source coming from the laptop screen and some overhead lights, creating a focused and professional atmosphere. The people are dressed in business casual attire, and their hands are visible as they interact with the documents and tools on the table.

# Why Stakeholder Engagement? What Could Go Wrong?



# Small Group Ice Breaker

**Introduce yourself!**

- ❖ **Name**
- ❖ **Organization**
- ❖ **Location**
- ❖ **What are your plans for New Years Eve?**





# Project Introduction: The Site

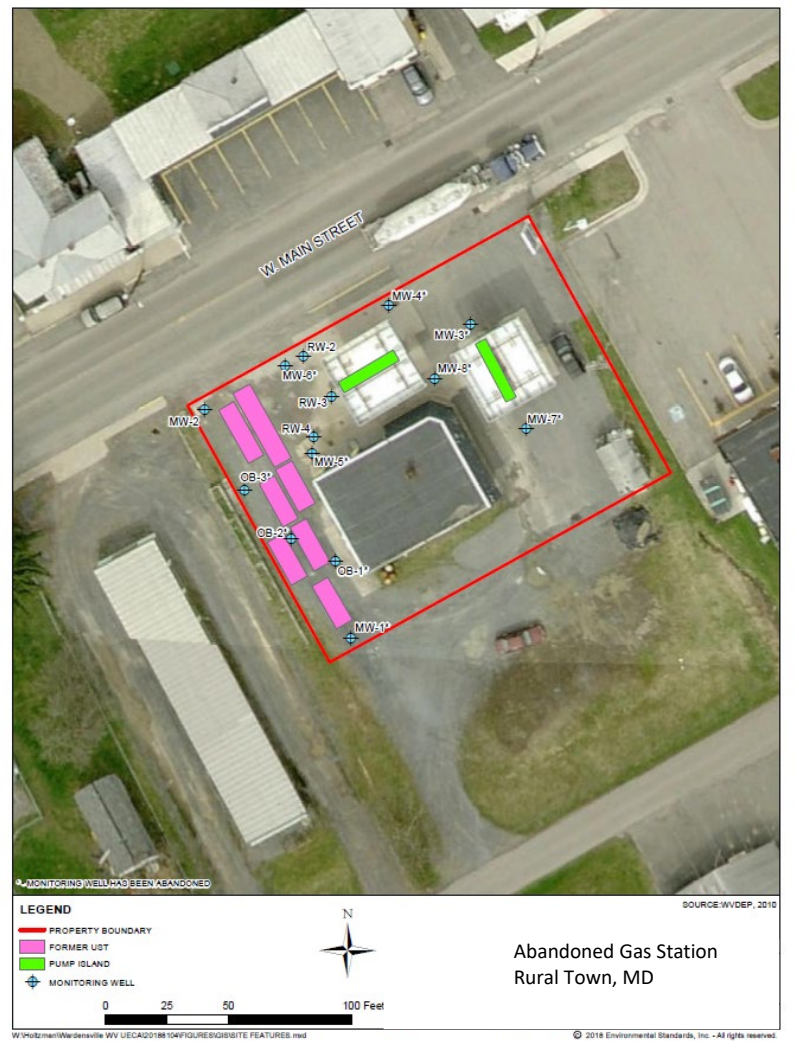
Abandoned Gas Station in Rural Western Maryland





# Project Introduction: Environmental Conditions

## Abandoned Gas Station in Rural Western Maryland





# Who's at the table?



Mayor



Property Owner



Non-Profit  
Leader



Developer



Environmental  
Scientist



County Planner





# What's YOUR role?



**Mayor**



**Property Owner**



**Developer**



**County Planner**



**Environmental  
Scientist**



**Non-Profit  
Leader**



# Collaborative Exercise

1. **Introduce your (new) selves**
2. **Pick someone in your group to share during the small group report out.**

5 minutes



# Collaborative Exercise

Wearing your assigned hats, develop a project strategy:

**How are you going to reuse the site?**

**Is everybody happy with this reuse plan? [Yes or No]**

**10 minutes**



# Collaborative Exercise

**How can brownfields resources support this?**

**5 minutes**



# Collaborative Exercise

**What are everyone's next steps?**

**5 minutes**



# Small Group Report Out





# Keep in Touch

## Mid-Atlantic TAB



- **Brownfields ID**
- **Planning**
- **Engagement**
- **Securing Resources**



**Becca Phillips**  
[Becca.Phillips@mail.wvu.edu](mailto:Becca.Phillips@mail.wvu.edu)



## Brownfield Services

- **Site Assessments**
- **Reuse Planning**
- **Community Engagement**
- **Grant Writing**
- **And more**



**Lydia Work**  
[LWork@montrose-env.com](mailto:LWork@montrose-env.com)



**Anna Leisher, Planner**  
[AnnaLeisher@montrose-env.com](mailto:AnnaLeisher@montrose-env.com)