



Compatible Use Website & Handbook Development Update

Presented to: Planning Directors' Roundtable

September 30, 2021

An Overview of Compatible Use & Encroachment

Compatible Use

Different uses of land or other resources which are harmonious and can exist together in the same area, so that one does not inhibit or adversely affect another. (from *Oxford Reference*)



Airports

bwairport.com



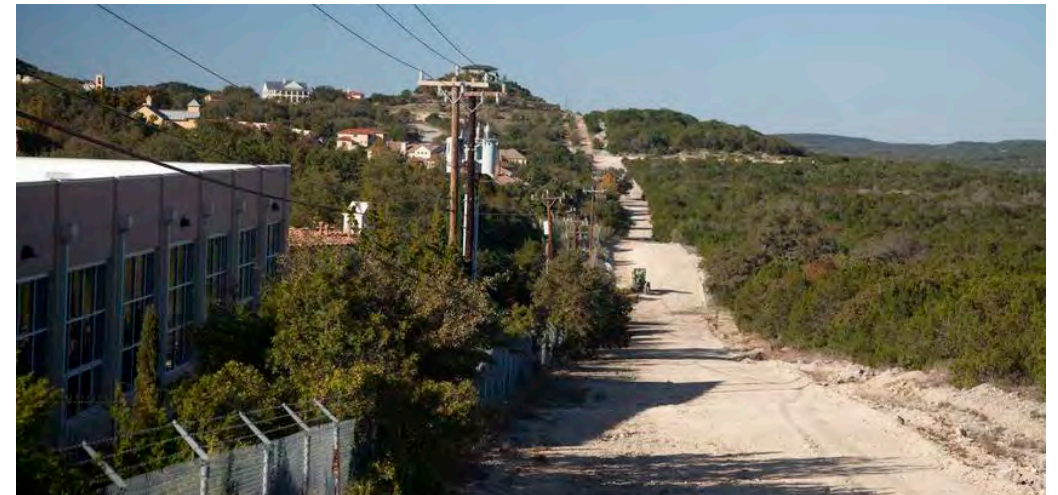
Highway/Energy Infrastructure

[Wikimedia Commons](#)



Military Installations

[APG Army Alliance](#)

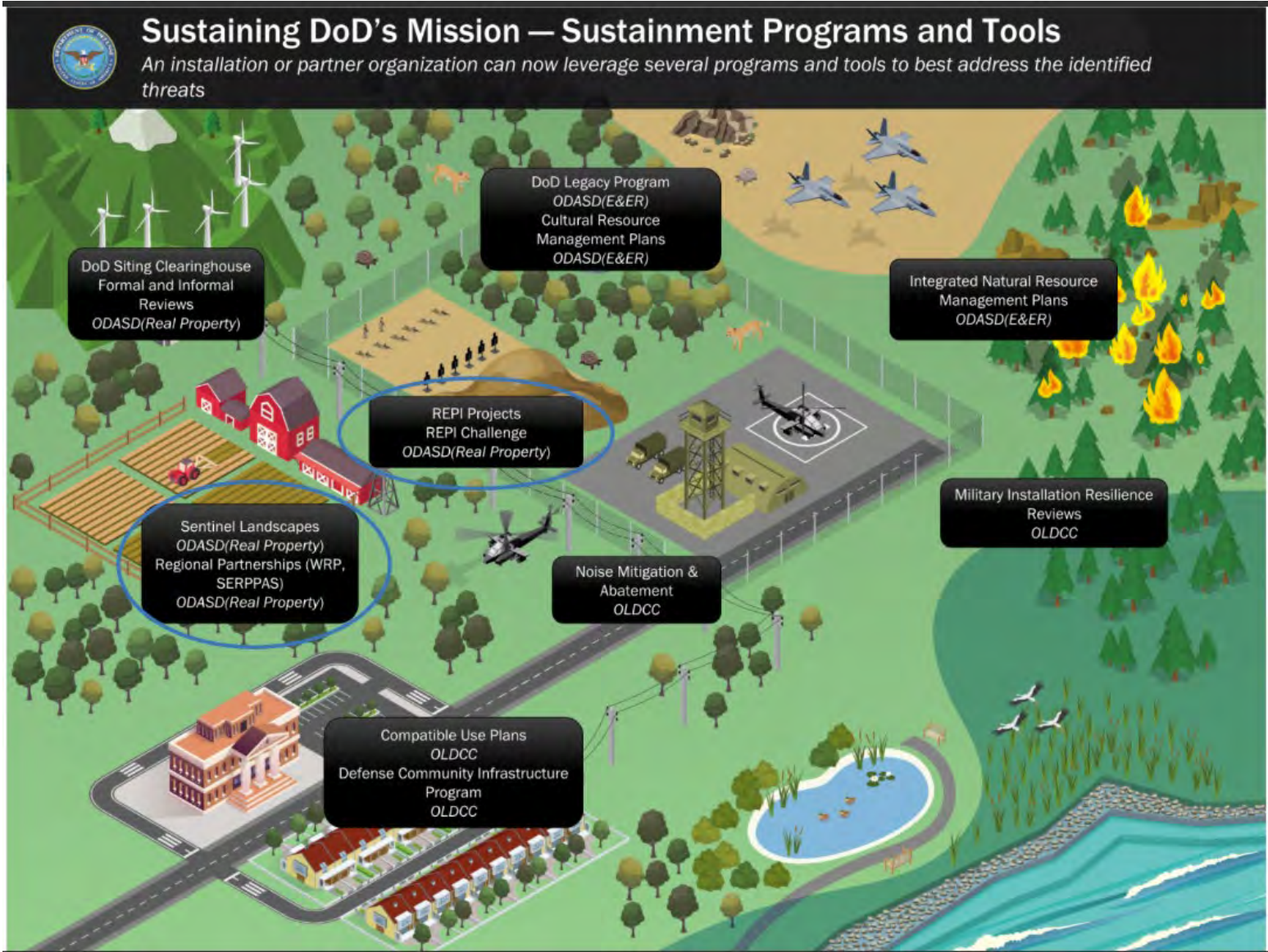


Luxury houses against the fence line at Camp Bullis on the northern outskirts of San Antonio, Texas. Photo: Bob Daemrlich/Texas Tribune [Military Bases Battle Encroachment of Cities](#)

Encroachment

- Action that does or is likely to inhibit or impede current/future military activities.
- Deliberate military activity that is or is likely to be incompatible with the use of a community's resources.

Poll Question #2



Source: Mission Sustainment Webinar, REPI
<https://bah16f18.adobeconnect.com/pkwwy16lygbb/>

Maryland's Military Installations

20

Military Facilities

60

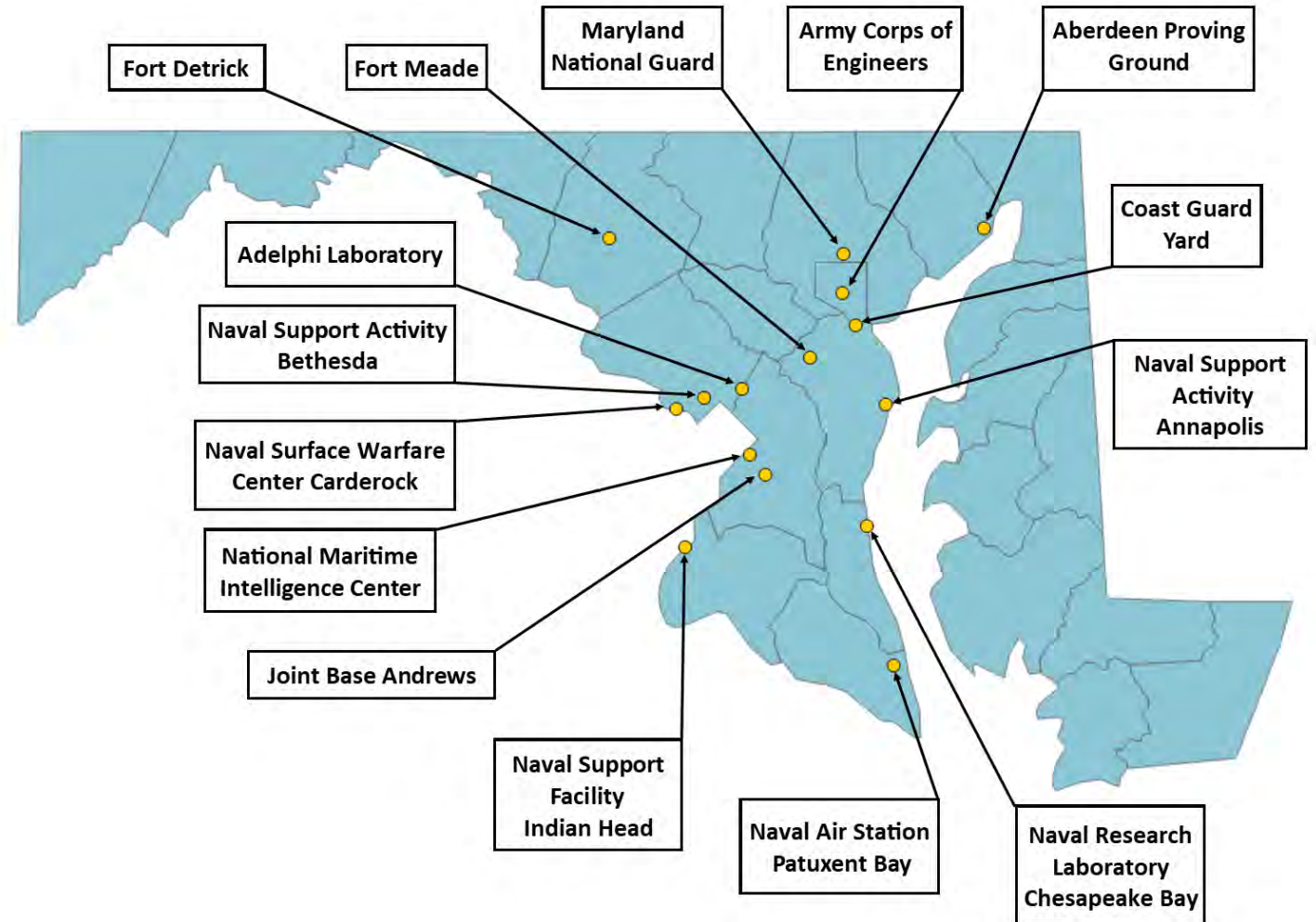
Federal Civilian Agencies

75

Federal Labs

(Twice as many as any other state)

Source: <https://open.maryland.gov/industries/military-federal/>



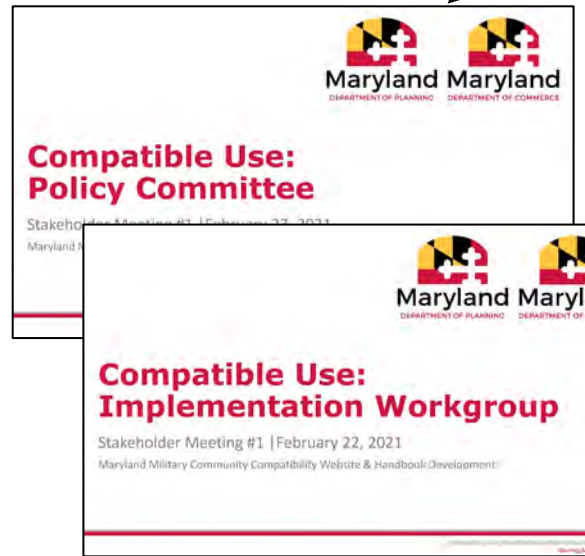
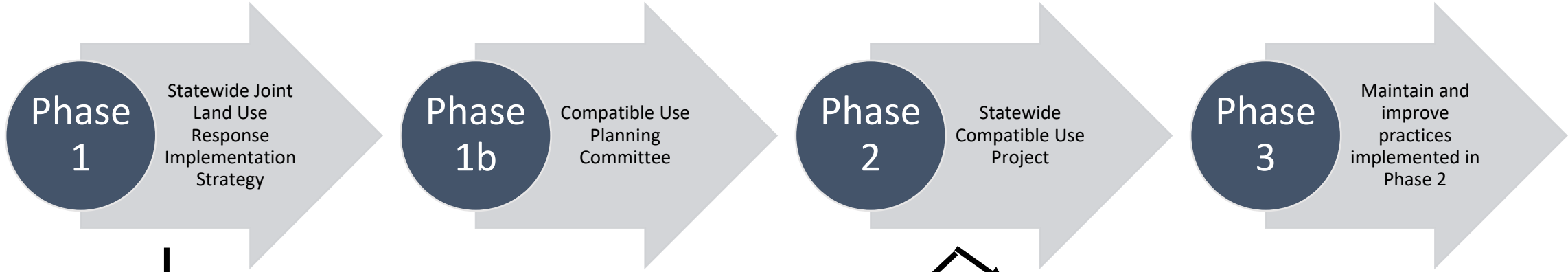
Source: FY 2016 Economic Impact Analysis of Maryland's Military Installations (Towson University)

<https://commerce.maryland.gov/Documents/ResearchDocument/economic-impact-analysis-of-marylands-military-installations-fy-2016.pdf>



Poll Question #3

Maryland's Compatible Use Plan



Compatible Use Website & Handbook

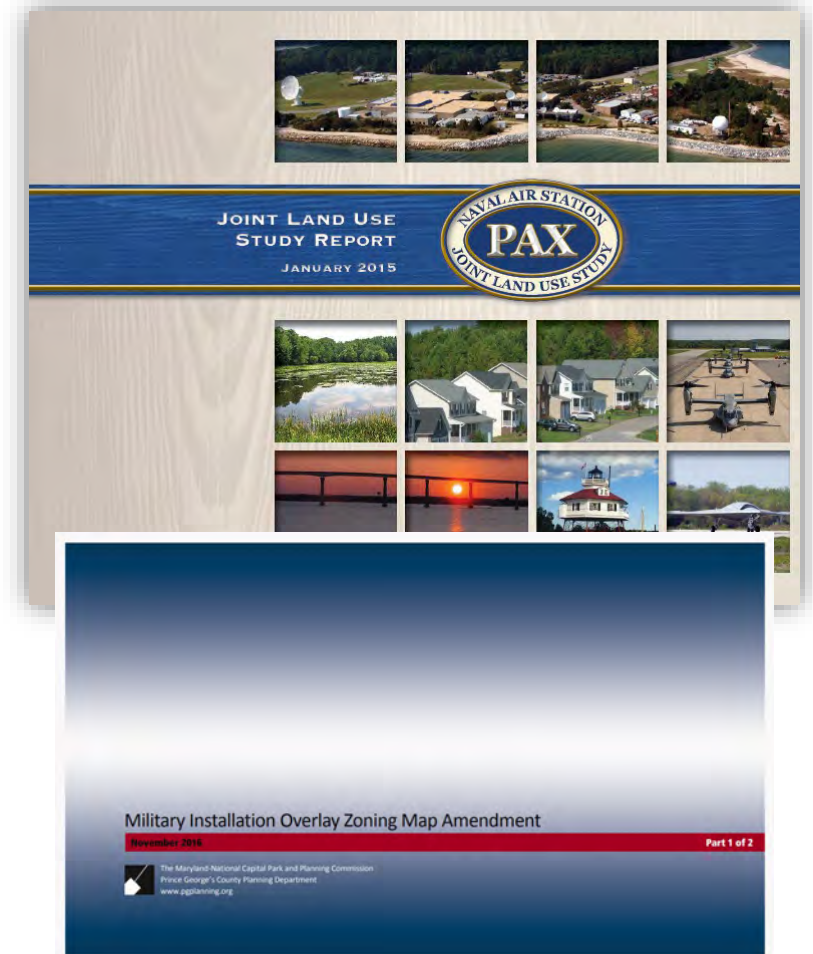
Land use technical assistance and guidance for local planners on compatible use issues

Purpose

- Illustrate economic impact of the military in MD and build community engagement.
- Provide communities with tools and resources to ensure compatible use.
- Resources will guide and facilitate the implementation of recommendations from the [2019 Statewide Joint Land Use Response Implementation Strategy \(SJRIS\)](#).

Resource Examples

- Best practices for communication & coordination
- Compatible Use Study guidance
- Sample model local ordinance language
- Compatibility mapping review tool



Source: [Tri-County Council of Southern Maryland](#)

Source: [MNCPPC](#)

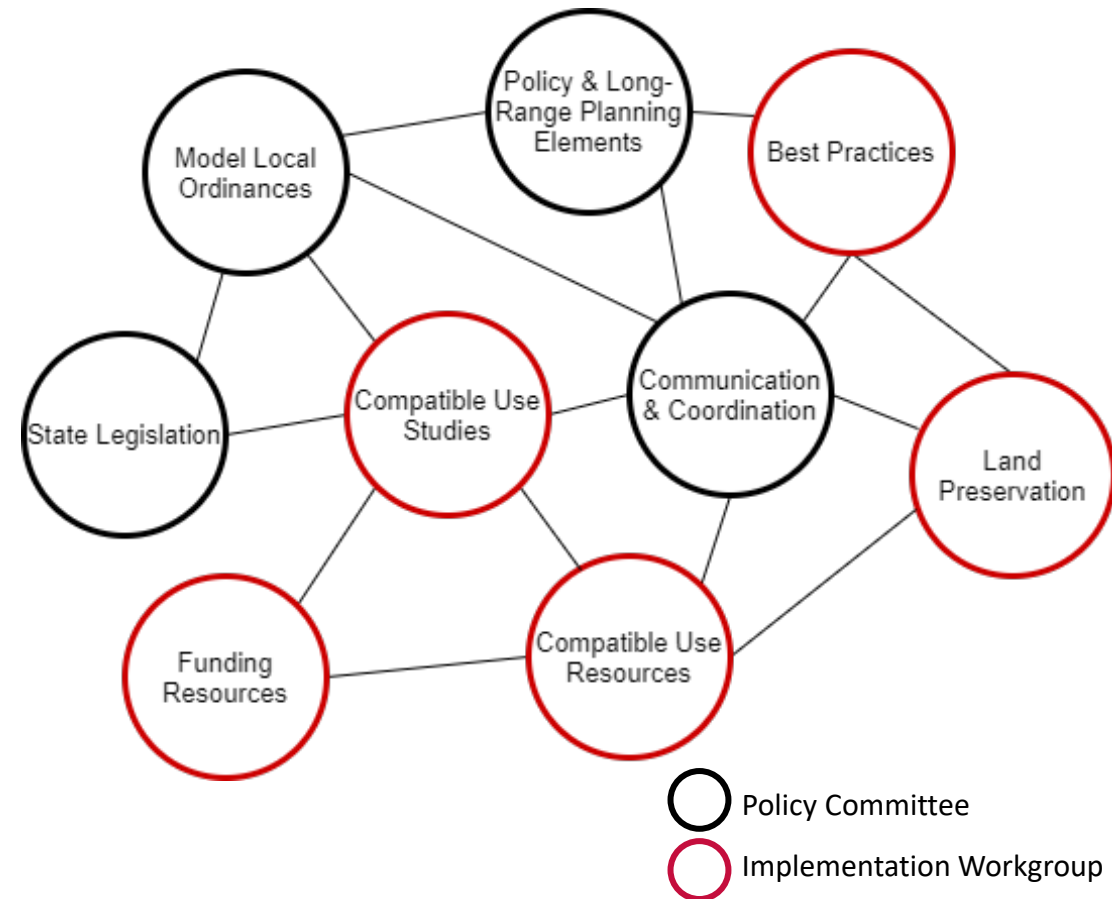
Project Methodology

- Regular stakeholder meetings
- Collection of existing resources from both in and out of state – best practices, contacts, etc.
- Gain understanding of what types of resources would be most beneficial to MD’s military communities.
- Visit the [project website here](#).

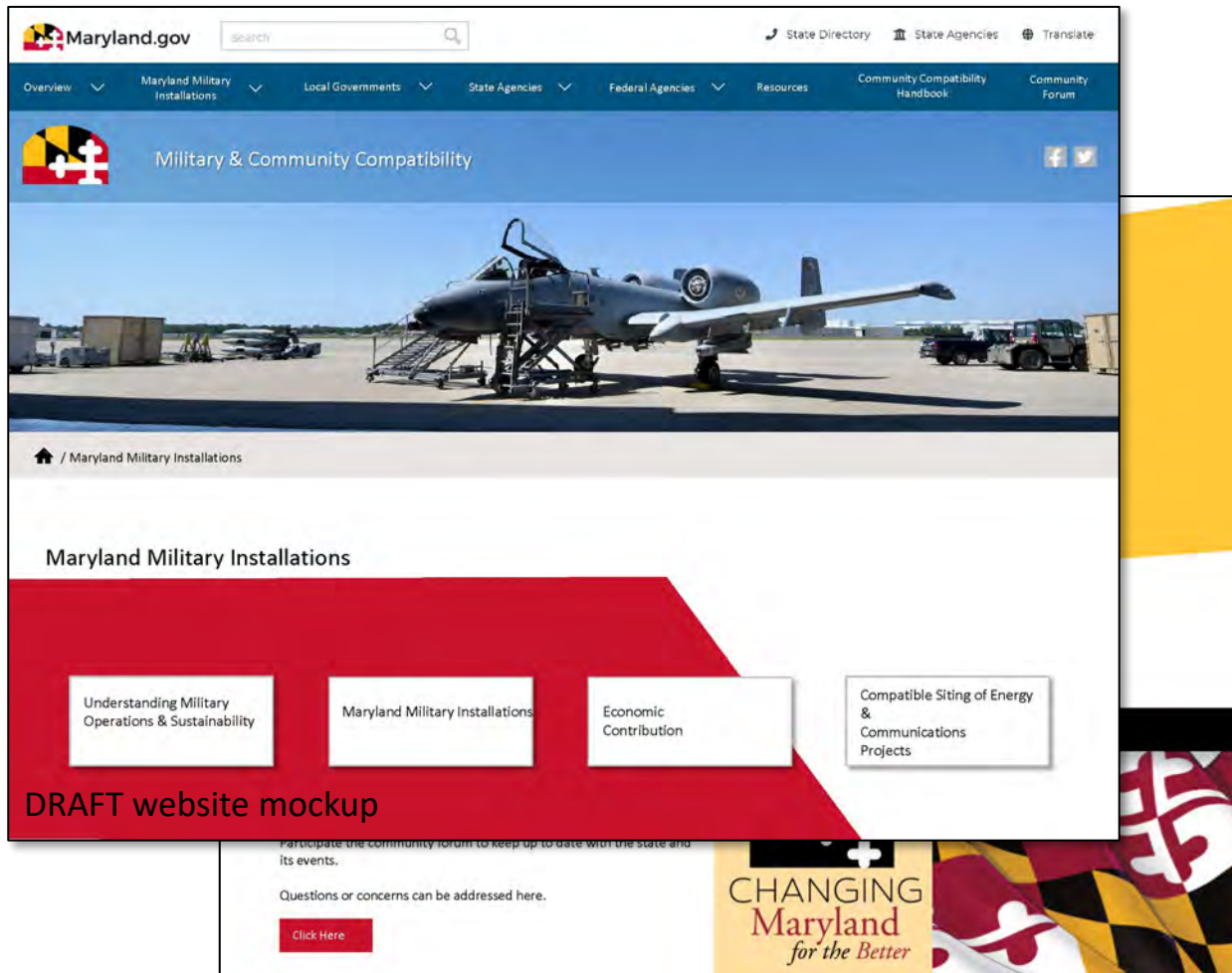
What we have heard:

Noise Infrastructure **Coordination**
 Compatible Use Studies
 ACUIZ Collaboration Need for data
 Mapping **Communication**
 REPI Funding Partnerships
 Audiences

Compatible Use Subcommittees



In Progress/Upcoming Activities



- Draft website development underway.
- Preparation for public outreach.
 - *Outreach will help support additional content creation and address gaps in information collected thus far.*
 - *Outreach methodology*
- Key individuals to include: *
 - Military installations & alliances
 - Real estate industry
 - Minority groups
 - Economic development offices
- Survey development

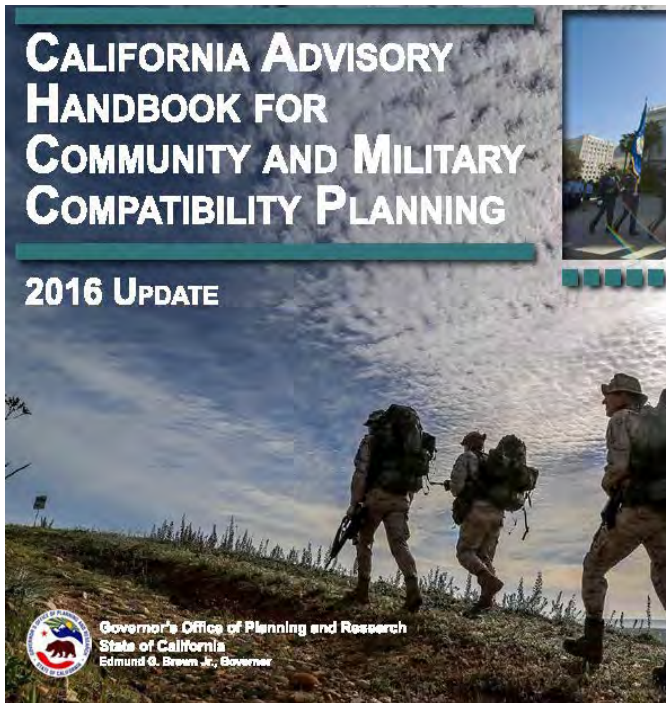
**Key individuals to include organizations/installations who are not currently engaged in stakeholder groups.*

Looking Ahead

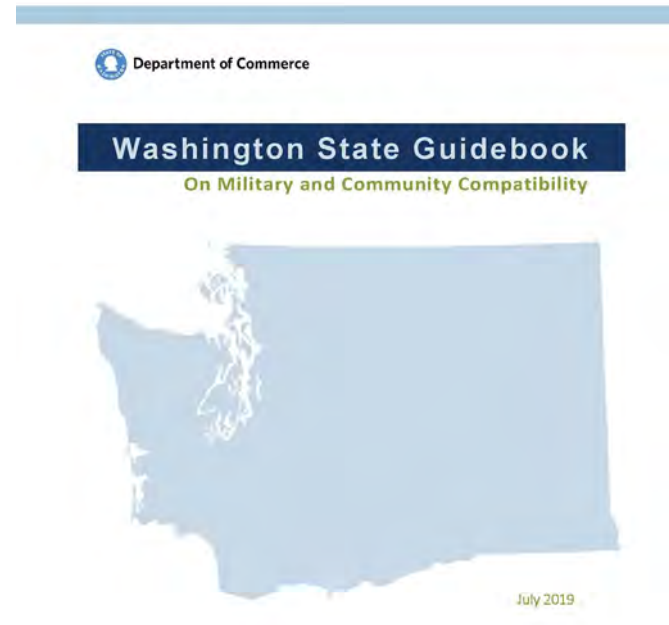
Timeframe	Activity	Main RFP Task Number
Late Winter/Early Spring 2021	<ul style="list-style-type: none"> Project Kickoff Subcommittee formation Stakeholder meetings 	Task 2/3: Compatible Use Website and Handbook
Spring/Summer 2021	<ul style="list-style-type: none"> Bi-monthly stakeholder meetings to continue resource gathering Draft website development/opportunities for feedback 	Task 2/3: Compatible Use Website and Handbook
Fall 2021	<ul style="list-style-type: none"> Stakeholder meetings (as needed) Begin public outreach 	Task 1: Community Engagement
Winter 2021	<ul style="list-style-type: none"> Finalize public outreach Report back to stakeholders and gain additional input Continue website development 	Task 1: Community Engagement
Late Winter/Early Spring 2022	<ul style="list-style-type: none"> Develop a maintenance plan that the state will take over Continue to refine website and handbook 	Task 4: Sustainability Plan
Late Spring/Early Summer 2022	<ul style="list-style-type: none"> Present website to stakeholders for final comments 	Task 5: Website Demonstration and Final Report

Input & Feedback

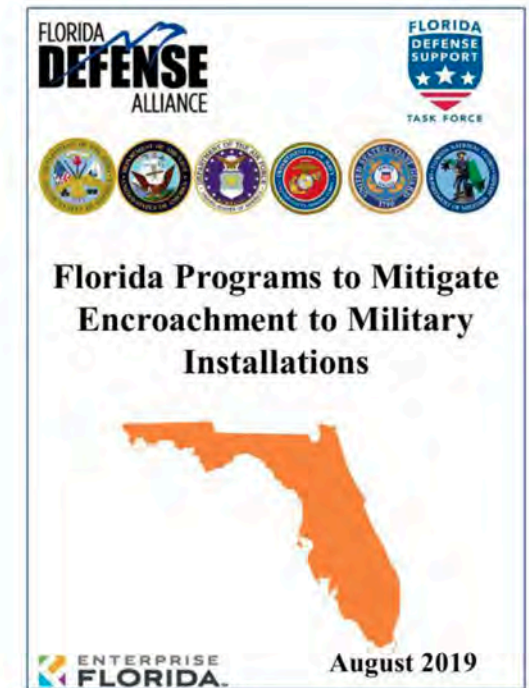
What, if any, actions have you or your jurisdiction taken to support compatible use? *Please add in the questions.*



Source: [Governor's Office of Planning & Research](#)



Source: [Washington State Department of Commerce](#)



Source: [Enterprise Florida](#)

Poll Question #4

Poll Question #5



Source: OLDCC
<https://oldcc.gov/>



Maryland
DEPARTMENT OF PLANNING



Maryland
DEPARTMENT OF COMMERCE

Planning.Maryland.gov

Contact: Sarah Diehl
sarah.diehl@maryland.gov

Project Website:
<https://commerce.maryland.gov/compatibleuse>