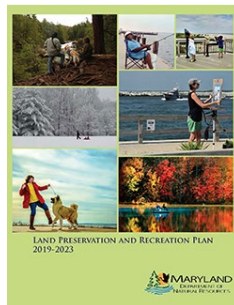
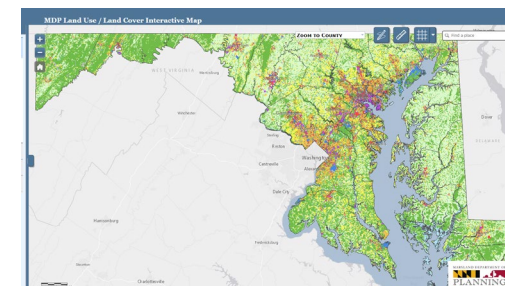


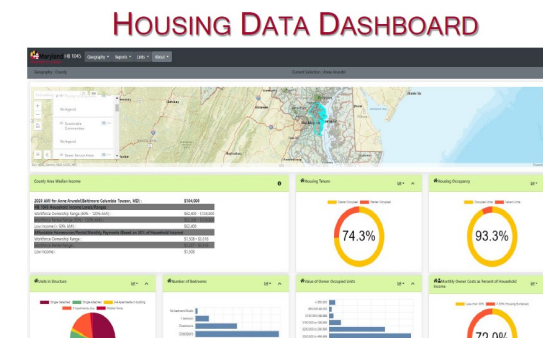
UPDATES ON PLANNING & OTHER STATE AGENCY INITIATIVES



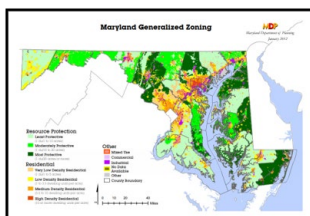
- 2022 Land Preservation, Parks, and Recreation Plan



- 2020 Census Updates
- Statewide Land Use Map



- Generalized Zoning
- Housing Element Models & Guidelines



2022 LAND PRESERVATION, PARKS AND RECREATION PLAN (LPPRP) UPDATE

- Draft LPPRP guidelines have been developed.
- County feedback has been received on the draft LPPRP guidelines.
- DNR and MDP are providing 1-2 check-ins each month with the LPPRP leads to answer questions, discuss obstacles, share each county's progress, provide ideas to assist each other.

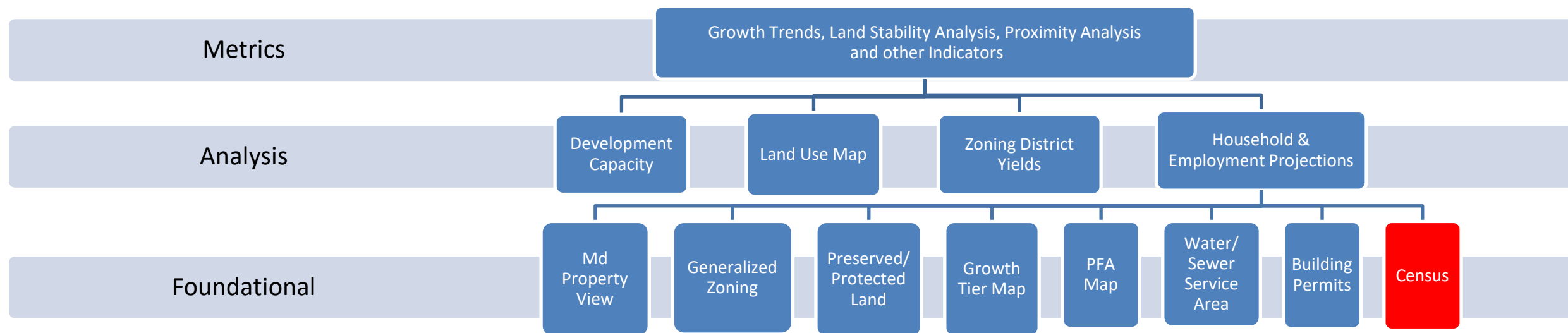


2020 LAND PRESERVATION, PARKS AND RECREATION PLAN (LPPRP) UPDATE

- DNR and MDP have provided two GIS trainings specific to the new Bay Program data standard for land preservation.
- MDP developed a GIS tool to facilitate moving local land preservation datasets into the Bay Program standard.
- Remainder of 2021 we will continue to offer 1-2 check-ins each month, LPPRP guidelines will be finalized.



RETHINKING MARYLAND'S GROWTH MODEL TOOLS



2020 CENSUS UPDATES



- Redistricting Data Release Schedule
 - Mid-to-late August - summary redistricting file in legacy format
 - By Sep. 30th - P.L 94-171 redistricting data for all states
 - Four weeks from the data release, the data will be posted on the redistricting website, this time is needed to address the law that requires prison population be counted at the last know residence of the prisoner
 - Information will be posted on the redistricting website

2020 CENSUS UPDATES



Public Use Microdata Areas (PUMAs)

- Each PUMA must have a minimum population of 100,000 through out the decade
- September 2021 Official program announcement
- Fall 2021 Census Bureau conducts training
- Establishing plan to facilitate work with interested data users

2020 CENSUS UPDATES



Urban Areas for 2020 Census

- Updated criteria
 - Defining urban clusters using the same criteria as urbanized areas
 - Minimum threshold of 10,000 persons or 4,000 housing units
 - Reduced distance of jumps from 2.5 miles to 1.5 miles
 - 385 HU's per square mile, etc.
- Working with MPO's to provide mapping assistance
- Comments due before May 20, 2021
- State Data Center preparing comments with statewide perspective
- Encourage MPO's to submit comments

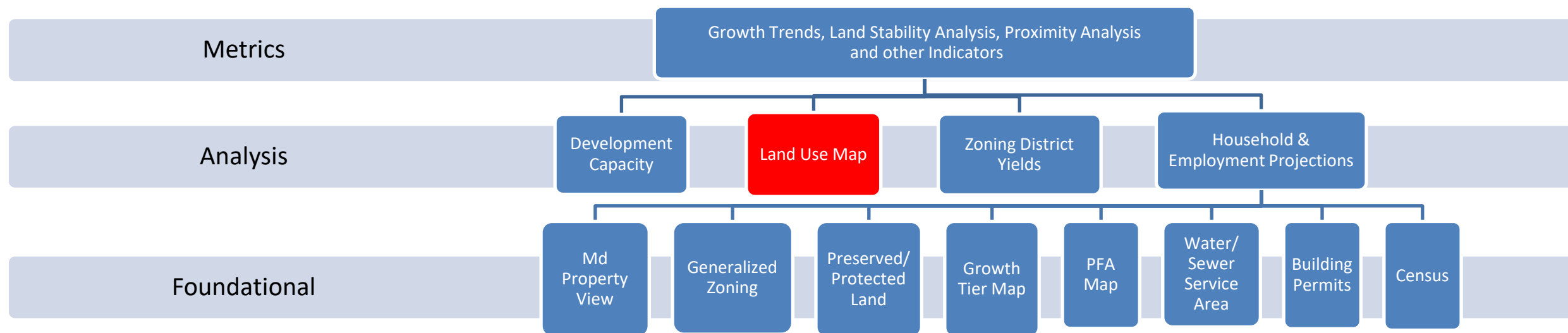
2020 CENSUS UPDATES



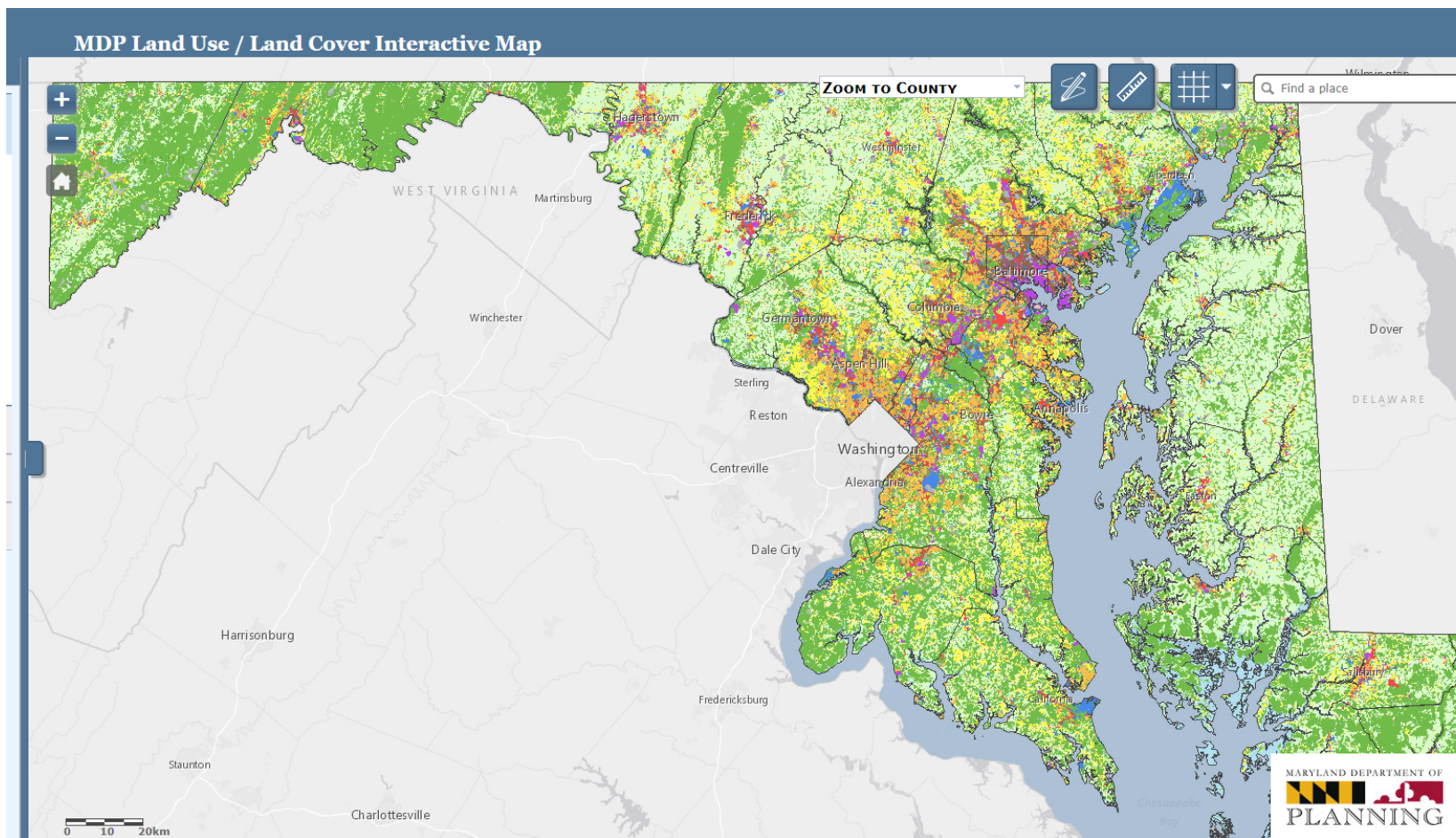
Metropolitan Statistical Areas (MSAs)

- Updated criteria
 - Minimum required urban area population to qualify as MSA 100,000
- Proposed changes might impact three of the state's MSAs
 - California-Lexington Park
 - Cumberland-MD-WV
 - Salisbury-MD-DE
- Potential impact on federal funding
- Loss of data (FHFA, BLS, BEA, etc.)
- State Data Center prepared and submitted comments

RETHINKING MARYLAND'S GROWTH MODEL TOOLS



STATEWIDE LAND USE MAP UPDATE

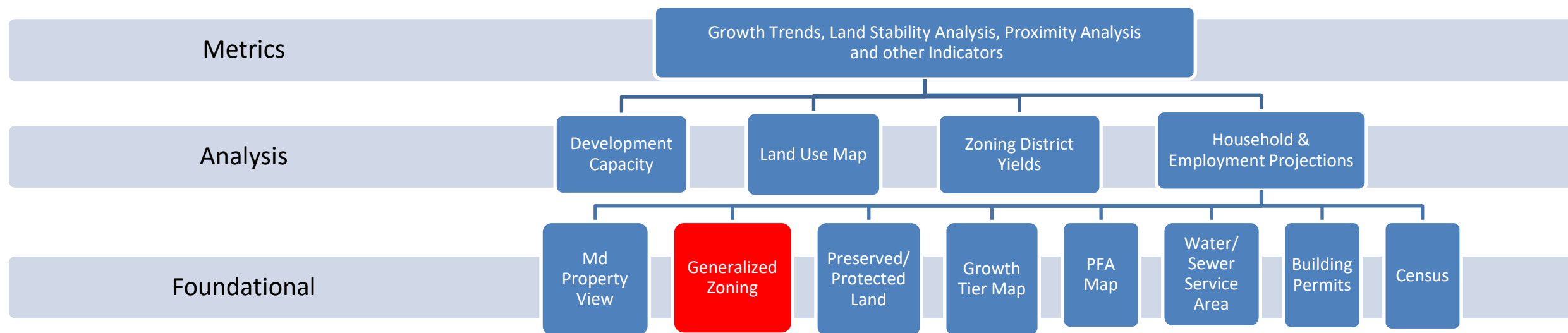


<https://planning.maryland.gov/Pages/OurWork/Land-Use/2020-land-use-map-update.aspx>

STATEWIDE LAND USE MAP UPDATE

- Methodology Updates
 - Focus on developed land uses
 - Incorporate local data where possible
 - Incorporate roadway network
- Next Steps
 - Finalize modeling (Spring 2021)
 - Incorporate 1-meter resolution land cover data from the Chesapeake Conservancy in (June 2021)
 - Initiate reviews with local jurisdictions (rolling basis beginning summer 2021)
- For more information, please contact Deborah Sward at deborah.sward@maryland.gov

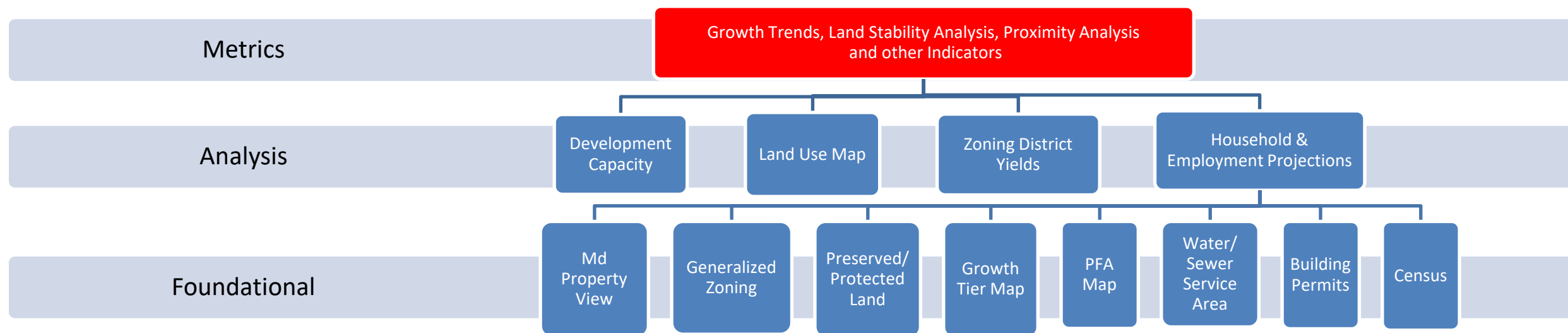
RETHINKING MARYLAND'S GROWTH MODEL TOOLS



GENERALIZED ZONING UPDATES

- Wrapping up the project
 - Mid-May the final tables out for review to be returned
 - QA/QC of final data in late-May and possibly into June
- Final product to be available early summer
 - Existing online applications like Finder Online and others
 - Available for download
- Regular updates to start in spring 2022

RETHINKING MARYLAND'S GROWTH MODEL TOOLS



HOUSING ELEMENT MODELS & GUIDELINES UPDATES

The screenshot shows a web dashboard interface. At the top, a dark grey bar contains the text "Current Selection: Anne Arundel" and a dropdown menu for "Census Year" set to "2019". Below this is a map of Maryland with a red outline highlighting the Anne Arundel County area. At the bottom, a table titled "Realty Trac County Foreclosures" is displayed, showing data for the years 2011 through 2014. The table has three columns: Year, Average DOM, and Total Foreclosure Events.

Year	Average DOM	Total Foreclosure Events
2011	123	1,045
2012	110	1,167
2013	87	3,307
2014	87	3,217

- Completed Dashboard Updates
 - Added 2015-19 ACS data. Users can select between this and 2014-18 data and the charts and reports will change accordingly
 - Days on Market and Foreclosure data by county
 - Foreclosure hotspots layer
- Under Construction
 - New 2021 AMI
 - Compare Function
- Other Updates
 - Best Practice Write Ups
 - HB 90

CONTACTS

Andrew Mengel
Stewardship & Planning Administrator, DNR
Ph: 443-569-2827
Email: Andrew.Mengel@Maryland.gov

Deborah Sward
Assist. Manager, Geospatial Data & Analysis
Ph: 410-767-4964
Email: Deborah.Sward@Maryland.gov

Joe Griffiths, AICP
Manager, Local Assistance and Training
Ph: 410-767-4553
Email: Joseph.Griffiths@Maryland.gov

Alfred Sundara, AICP
Manager, Projections and State Data Center
Ph: 410-767-4002
Email: Alfred.Sundara@Maryland.gov

Shelly Aprill
Planner, Geospatial & Data Analysis
Ph: 410-767-4474
Email: Shelly.Aprill@Maryland.gov

Chuck Boyd, AICP
Director, Planning Coordination
Ph: 410-767-1401
Email: Chuck.Boyd@Maryland.gov