

Maryland Department of Planning Fiscal Year 2024 Annual Report



Value Our Shared Heritage
Shape Places Where All Have the Opportunity to Thrive
Inform Decisions for Sustainable Growth

December 2024

A Message from Governor Wes Moore

I am pleased to present the Fiscal Year 2024 Annual Report for the Maryland Department of Planning.

We are focused on building a state with a dynamic economy to get Maryland back on track, making sure that our efforts will leave no one behind. We will continue to promote priorities that deliver results.

Four key objectives guide our work- to make Maryland more affordable, more competitive, safer, and the state that serves.

At the Maryland Department of Planning, sustainable growth is the framework to balance Maryland's economic growth needs with our environmental responsibilities through community resiliency and neighborhood vitality while deepening our commitment to equity to ensure that no one is left behind.

The shift from smart to sustainable growth recognizes the need to broaden our land use work to include all three E's of sustainability- equity, economy, and environment- to consider not only WHERE we grow, but HOW we grow and for WHOM.

The department is committed to providing guidance, resources, and partnership necessary to make this Maryland's decade with our continued focus on sustainable growth.

Together, we are building a brighter future for our state. I thank the team at the Maryland Department of Planning for their dedicated commitment and contributions to that vital cause.

Sincerely,

Wes Moore
Governor



A Message from the Secretary

Planners have unique lenses that cut across multiple disciplines. We work to find balance between competing needs to achieve maximum benefit for all now and in the future. This is the essence of sustainable growth policy.

MDP's talented team of professionals includes archaeologists, scientists, historians, data and spatial analysts, land use planners, natural resource experts, and multiple planning specialists working together to inform growth and development decision making in Maryland. We are collaborative by nature due to our deep understanding of the need to consider multiple perspectives and data points to achieve the best outcomes for our communities, our natural resources and our economy. We know that with every investment, we must gain multiple best outcomes through informed decision-making that also includes common sensibility of what is happening on the ground.

As the state's planning agency, we combine our expertise to respect the past, consider the present and prepare our communities for varied possible futures. On behalf of our entire MDP team we are grateful for the opportunity to serve Marylanders as we all work together to shape a future for Maryland where all have the opportunity to thrive.



Sincerely,

Rebecca Flora, AICP, LEED ND / BD+C
Secretary

Table of Contents

- Introduction 2**
- Planning Services 4**
 - Planning Best Practices..... 4
 - Research, Review & Policy.....10
 - Geospatial Data and Analysis16
 - Parcel Data and Mapping20
- State Data and Analysis Center 21**
- Maryland Historical Trust 24**
 - Office of Planning, Education, and Outreach.....24
 - Office of Research, Survey, and Registration27
 - Office of Preservation Services29
 - Jefferson Patterson Park and Museum.....30
- Internal Operations 32**
- External Affairs..... 33**
- MDP Avoids Filling Landfills..... 36**
- MDP Staff..... 38**

Introduction

The Maryland Department of Planning (MDP) serves the state by providing technical assistance, program guidance, data analysis, and outreach to local governments. We assist state agency partners and provide timely data to the private and public sectors. Our work reflects the priorities and direction of the Moore-Miller administration, including a focus on efficiency while emphasizing flexibility, and collaboration with local jurisdictions to promote economic development and environmental stewardship.

MDP serves the state and local jurisdictions with 142 budgeted positions, and is organized into five divisions – Planning Services, State Data and Analysis Center, External Affairs, Finance and Operations, and the Maryland Historical Trust (MHT).

Through **Planning Services**, MDP typically completes more than 200 technical assistance projects for counties and municipalities every year. The department provides support in reviewing or drafting dozens of comprehensive plans or ordinances for local governments. We also collect, analyze, and publish social, economic, and geographic information, and maintain the digital maps of the state's 2.3 million parcels. These maps form the foundation for the development of policies and are used throughout the state by various agencies, decision makers, and stakeholders. MDP also ensures that proposed financial and non-financial assistance projects within Maryland are consistent with state and local laws, regulations, and guidelines.

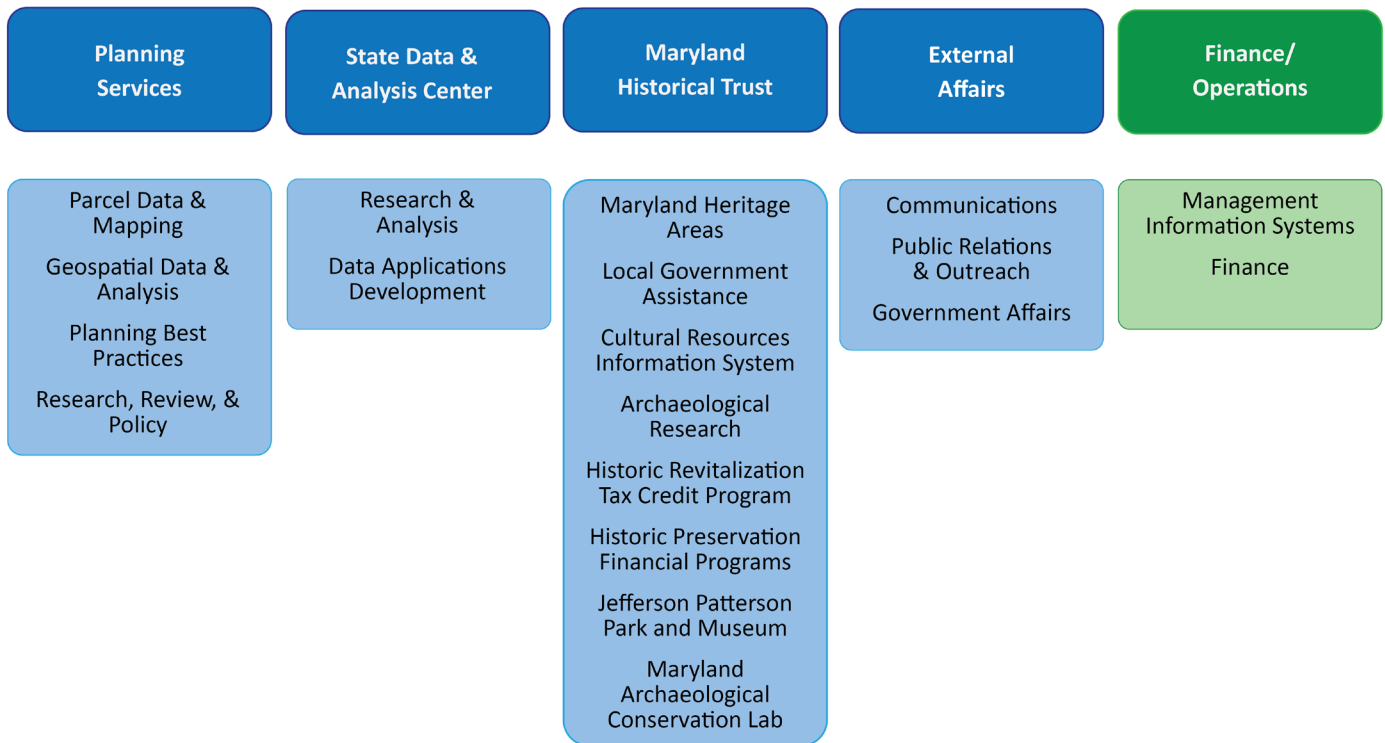
The **State Data and Analysis Center (SDAC)** maintains more than 90 datasets, including population and household projections, school enrollment, median household income estimates, and statistics on business establishments and farms.

The Maryland Historical Trust (MHT) is dedicated to preserving and interpreting the legacy of Maryland's past and serves as Maryland's State Historic Preservation Office (SHPO). It provides direct assistance to a broad base of local, state, and federal stakeholders in the identification, protection, and enhancement of historic and cultural resources. MHT administers a variety of historic preservation grant, loan, and tax credit programs, including the Historic Revitalization Tax Credit, which leverages private investment in the rehabilitation of both commercial and residential historic properties. MHT also administers and oversees the operation of the Jefferson Patterson Park and Museum (JPPM) in Calvert County, which includes the Maryland Archaeological Conservation (MAC) Laboratory.



Maryland Department of Planning staff with Governor Wes Moore at the Jefferson Patterson Park & Museum

Maryland Department of Planning



The **External Affairs** unit was developed to meet the growing need for the department to be more engaged in the legislative process at all levels of government. Additionally, the unit focuses on developing partnerships with non-governmental organizations and entities to further the mission of MDP and facilitate the goals of our strategic plan. The Communications division is also within this unit. The communications section coordinates outreach to promote the department’s initiatives and services in order to develop and strengthen relationships, as well as support the administration’s legislative and policy initiatives.

Finance and Operations is responsible for the administrative support for the department, including the department’s budget, financial matters, information technology, procurement, logistics, and general human resources matters.

MDP works with Maryland’s jurisdictions to enhance the built environment to improve communities. We work with communities to help shape a vision for their future that continues to protect and preserve the natural environment. We view the cultural, historic, and natural resources of our communities as catalysts that strengthen and renew economic and community development and growth.

We appreciate the diversity of Maryland’s people and geography and recognize that successful solutions require balancing the concerns of various interests and stakeholders. It is our responsibility to provide guidance for the direction of state resources most efficiently across jurisdictional lines. We strive to provide customers with the best service, and to help each jurisdiction implement their vision and achieve their goals consistent with respect for people and place.

Planning Services

The Planning Services Division is the core of the agency's planning-related functions. The division's personnel are organized into four units, which include Assistance, Education, and Training, Infrastructure and Sustainability, Resource Conservation and Management, and the State Clearinghouse.

Planning Best Practices

Comprehensive Plan Review and Policy Guidance

Planning Best Practices provided significant technical and policy assistance to local governments implementing state planning laws. Regional planning staff completed reviews of 17 local comprehensive plans and amendments in FY24. In addition, they reviewed 28 municipal annexations, and 61 county water and sewer plan (WSP) amendments.

The core function of Assistance, Education, and Training is to provide technical assistance to jurisdictions either by helping them navigate federal and state regulations or connecting them to the resources that smaller municipalities cannot deploy. Some examples of technical assistance provided in FY24 include:

North Beach, Calvert County: Throughout FY24, MDP Planning Best Practices staff aided the Town of North Beach in the update of its comprehensive plan. The town submitted draft comprehensive plan elements, such as those for housing and water resources, for MDP review and guidance. This assistance was not in the form of the required 60-day review of draft comprehensive plans, but rather a proactive collaboration to help a small town with limited capacity ensure it was meeting Land Use Article requirements while also implementing best practices and accessing the most current data and resources.

Town of Frostburg, Allegany County: MDP staff attended and assisted with a Maryland Planning Commissioners Association (MPCA) regional workshop held in Frostburg in July, 2023. MDP and MPCA members conducted training on comprehensive planning, which included discussions of potential funding sources, such as obtaining funding through special projects grants from the Maryland Department of Housing and Community Development (DHCD). Staff and MPCA Board members also discussed Maryland's comprehensive planning requirements and the planning process. Local planning and board of appeals members from Frostburg, as well as planning staff from Allegany County, Hagerstown, and Frostburg attended the workshop.

In late FY 24, MDP also met with Frostburg staff to discuss questions they had about the 2024 General Assembly session's HB 805, which modified local zoning requirements for cannabis dispensaries. The city sought guidance on siting dispensaries in mixed-use districts and whether they could be considered "zoned for residential use", using the language of the bill. MDP clarified the bill language for city staff and provided them with questions which they could take back to their city attorney for further discussion.

Harford County: For a few years. MDP has encouraged Harford County to update its Priority Funding Area (PFA) to incorporate eligible areas. Ensuring that growth areas zoned for higher density residential or employment uses, and which are planned for public water and sewer service, are in a locally designated PFA benefits both the state and Maryland jurisdictions. PFA certification reduces delays on the provision of growth related funding and advances sustainable development best practices. In FY24, the MDP Central Maryland Regional Planner collaborated with county planners to add 71 properties to its locally designated PFA, thus facilitating funding for housing, economic development, and resiliency supportive infrastructure in the county.

Montgomery and Prince George’s Counties: During the 2024 legislative session, MDP Planning Best Practices staff aided state government and county staff, as well as legislators, on the analysis and development of HB 538, the Housing Expansion and Affordability Act. One of the bill’s objectives was to incentivize residential development within .75 miles of transit stations, most of which are located within Prince George’s and Montgomery Counties. Responding to local questions about the bill, and in support of DHCD and the Governor’s Office, an inter-divisional staff team mapped zoning districts within the .75 mile radius and calculated maximum residential unit capacity, using density projections from the generalized zoning project completed in 2022. The General Assembly ultimately approved the bill with support from Washington Metro legislators, partially the result of MDP’s timely and thorough analysis.

Town of Rising Sun, Cecil County: MDP Upper Eastern Shore Planning Best Practices staff aided Rising Sun with updates to its zoning ordinance and PFA. To this end, staff participated in several meetings with the Town Administrator and the town’s planning commission. In particular, the updates focused on streamlining the town’s Table of Permissible Uses, defining ADUs, mobile homes, and tiny homes, and creating new standards (uses) for the town’s new Employment Center (EC) zoning category. Staff also provided technical assistance on the PFA certification requirements for a 207-acre parcel.

Town of St. Michaels, Talbot County: MDP’s Lower Eastern Shore (LES) Office guided the Town of St. Michaels through an annexation and PFA certification process to help it designate a property as a Sustainable Community, thus making it eligible to receive Neighborhood Revitalization Program funding to support the development of a new town hall and park on the subject parcel. To achieve its ultimate goal, the town needed to process the annexation, provide letters certifying sewer service to the property and requesting PFA certification, and submit a boundary modification to DHCD to add the property to its Sustainable Community boundary. The town successfully completed all of these steps with direct assistance from MDP staff throughout the process.



Shipyard and Lighthouse, St. Michaels Harbor

Appalachian Regional Commission

The Appalachian Regional Commission (ARC) is a regional economic development agency and is partially funded by MDP. The program is directed through the Office of the Governor and coordinated and managed by the MDP Secretary, who serves as the Governor's alternate to the ARC. The program manager, who handles the day-to-day operations, works out of MDP's Western Maryland Regional Office, along with additional program support staff. The program manager works closely with the Tri-County Council for Western Maryland, Inc. and Maryland's Local Development District (LDD). The program manager and LDD meet regularly with potential applicants to provide information to ensure complete applications, confirm eligibility under ARC code, and ensure projects are consistent with both the state of Maryland priorities, and ARC goals and strategies.

*In the Numbers Federal FY24**

Appalachian Regional Commission



A.R.C. in Maryland

This adds up to:

Jobs created and retained, workers/students trained or educated, Increased economic development and quality of life for 252,000 residents.

*Federal fiscal year October 1, 2023, through September 30, 2024.

Results from Targeted Investment Priorities for FY24

Economic Development

We are addressing the unique challenges of the region, collaborating and leveraging investment for economic development.

- **Hagerstown Community Center Plan Update**

Funds are being used to hire a consulting firm to create a new and updated downtown revitalization plan to replace the 2014 ten-year plan. The new plan will focus on how to manage and capitalize on the expected economic impact of the baseball stadium that recently opened in downtown Hagerstown. The consultant will prioritize community engagement with key stakeholders like residents, property owners and businesses during the creation of the plan. Project activities include market, land use, cost-benefit and economic analyses of the downtown and identification of catalytic and achievable ten-year goals. An implementation plan will be created for each of the identified goals/projects. The City is particularly interested in strategies and initiatives that maintain community character, create jobs, increase tourism and generate investment in downtown square footage.

- **Tri-State MD, PA, WV Communities of Excellence**

Frostburg State University, in partnership with their Communities of Excellence (COE) Steering Committee and a procured branding consultant, will continue their participation in Communities of Excellence 2026's three-phase National Learning Collaborative. The partnership works to identify regional systemic issues, execute strategies to address those issues, and enhance key areas of focus that will increase economic prosperity in the region. Comprised of three states and five counties in rural, north central Appalachia, this COE coalition will complete years 2 and 3 of the COE National Learning Collaborative, develop a strategic plan and work plan, create a branding and communications strategy, and conduct listening sessions and roundtables with stakeholders and community members in the ARC region.

Infrastructure

MDP staff focused on leveraging resources and collaborating with partners to improve infrastructure throughout the rural region.

- **Garrett County - Hoyes Run Well Development**

ARC funds will be used to expand the Deep Creek Lake water system to improve service for existing customers and allow for new development. The project will include engineering and construction to convert two existing test wells into production wells, and construction of a water treatment facility. Water test wells measure water volume throughout the entire year during various weather conditions to ensure there is adequate capacity prior to converting to production wells. The goal is to provide potable water for Marsh Mountain and the rest of the Deep Creek Lake Water System, providing additional capacity for growth and expansion in that area.

- **Public Safety Broadband Alternatives for Telework and School at Broadford Park**

This project will install fiber within already available conduit and vaults; connect the fiber to the network equipment; install required splice panels, wi-fi access points, and security camera connections; and initiate broadband service within the park. The park will serve as a hub for students and teleworkers when they do not have access to broadband service at their homes. Events held at the park, including concerts in the soon to be completed amphitheater and other private rental celebrations, will be able to use the wi-fi to connect their events with a broader audience, thereby enhancing tourism possibilities.

- **Keedysville Water System Plan**

The Maryland Department of the Environment has declared the Town of Keedysville a distressed community for its water and sewer infrastructure. This plan will include an evaluation of the existing water infrastructure, which was constructed in the 1970s, identify possible issues, and strategically plan Keedysville's next steps for the eventual repair and replacement of the system. Proactively addressing any issues within the water system will help avoid larger, more costly repairs and will minimize disruption to Keedysville's residents and businesses. This plan will also help Keedysville thoughtfully approach future population growth and water system expansion without negatively affecting quality of life or finances.

Recovery Ecosystem

Clinical care, access to employment, housing, and transportation are essential to empower those struggling with a disorder. Staff prioritize projects that help fill the gaps in the recovery ecosystem.

- **Western Maryland Education Center DbA AHEC West Innovative Readiness Training Medical Mission**

With higher-than-average poverty rates in Allegany, Garrett, Mineral and Bedford counties and many residents living just over the federal poverty level, households often struggle to afford basic household necessities including housing, child care, food, transportation and health care. The Innovative Readiness Training serves as a vital avenue for extending high-quality healthcare to individuals with low incomes, effectively addressing their healthcare requirements. Over a two-week period, military medical professionals provided health screenings, restorative and preventative dental care, vision screenings and no-cost prescription eyeglasses to low-income residents in the tri-state area.

Education and Workforce development

MDP staff prioritize projects that prepare students for jobs in the 21st century, expanding partnerships among schools, colleges, and businesses in order to support workforce development and improve workforce readiness for all job seekers.

- **Meritus School of Osteopathic Medicine - Educational Technology**

ARC funding will assist Meritus Healthcare Foundation in opening a four-year osteopathic medical school in Washington County, Maryland to reduce the growing physician shortage in the rural parts of Maryland, Pennsylvania and West Virginia. The Meritus Medical School of Osteopathic Medicine (MSOM) will develop physicians who are professionally accomplished, socially responsible and community oriented. ARC funding is being used to purchase equipment and supplies for the MSOM. Technology and simulation equipment offer transformative benefits in medical school education, enhancing learning experiences and fostering clinical skills development.

- **Supporting Social Media Marketing and Multimedia Technology In Western Maryland**

In a unique partnership with Allegany College of Maryland (ACM) and Rainmaker Productions, ARC funding will be used to modernize and enhance AMC's social media and multimedia programs, ensuring students are equipped with the latest digital communication skills and meet a critical workforce need. With this investment, ACM plans to upgrade its Mac Lab to provide essential editing software for all students and establish dedicated editing suites. The project will enable AMC to hire guest instructors and industry experts to assist students in their learning.

We remain focused on our long term economic development goals for the region and have expanded our outreach and technical assistance to local governments. With the influx of additional state and federal funding, we are working closely with stakeholders and local governments to address the unique challenges of the region, to identify funding and assistance for priorities and to ensure completion of infrastructure and other projects that assist in long term sustainable economic development.

Shaping and empowering leaders

ARC supports our future community leaders and builds upon our existing leadership and community capacity working with ARC's Academies and Institutes. Each year we are proud to sponsor middle school, high school, and college students to participate in ARC's STEM education, entrepreneurship development, and applied research programs.

We are also proud to select and sponsor participants in the Appalachian Leadership Institute. The institute provides a comprehensive leadership and economic development training opportunity for our local leaders who are passionate about helping their communities thrive. Following an extensive training curriculum, future fellows are empowered and encouraged to take action to positively impact the future of Appalachia.

Education and Training

The Planning Best Practices Unit coordinates MDP's education and training efforts, both locally and statewide. Staff is responsible for MDP's newsletter, Planning Practice NEWS, along with posting available training, conferences, webinars, and funding on the website. In FY24, MDP published 19 newsletters and blog posts. With Planning Practice NEWS, the department continued communicating the statewide planning efforts of other state agencies and local planning departments. Topics included: affordable and fair housing planning; state funding sources; local government annual reporting; Maryland Department of Transportation's (MDOT) connected and automated vehicle and electric vehicle programs; Maryland Planning Commissioners Association (MPCA) events and resource development; the Walktober 2023 webinar series and events; Accessory Dwelling Units; SDAC data releases; MDP's Brownfield Conference; and new resources such as a model ordinance for siting warehouses, a Compatibility Review Mapping Tool; and Sustainable Growth webinars.

Maryland Planning Commissioners Association: Staff maintained its assistance to MPCA in FY 24. Staff aided MPCA in conducting its 40th annual fall conference in Queen Anne's County, , "Forty Years of Change, Forty Years of Opportunity," with 156 attendees. The conference program included sessions on zoning code maintenance, unlocking federal government funding, forestry guidance, comparative ethics, equity and electric vehicles, and brownfield redevelopment. . The conference also included the MPCA annual meeting, recognitions of impactful citizen planners, and a keynote address by MDP Secretary Rebecca L. Flora, AICP. Staff also oversaw the online Planning Commissioner Training Course and hosted hybrid courses in October and June, totaling 170 new certificates of completion.

ADU Policy Task Force: During the 2023 session, the Maryland General Assembly passed SB 382, enacted into law on May 28, 2023. The bill established the Accessory Dwelling Unit Policy Task Force (Task Force) to study the placement of accessory dwelling units (ADU) on land zoned for single-family residential use and to survey and document a representative sampling of the variety of ordinances, laws, codes, and policies regarding accessory dwelling units at the state and local level. MDP's Planning Best Practices unit staffed the Task Force in FY 24. The Task Force studied, in partnership with local planners and stakeholder organizations, best practices for streamlining or standardizing the local ADU application and development review process. From this analysis, the Task Force developed legislative, policy recommendations, and best practices and studied the potential impacts on surrounding single-family neighborhoods, local housing markets, and neighborhood character, publishing its final report in May 2024. The report addressed the topic areas of by-right approval, parking requirements, lot requirements, restrictive covenants, impact fees, infrastructure and facilities, incentives and partnerships, owner occupancy requirements, and short term rentals.

Compatible Use and Maryland Resiliency Collaboration: Building upon its publication of the Maryland Military and Community Compatible Use Website and Handbook in FY24, MDP expanded its resources and scope in the areas of compatible use planning and resiliency in FY25. The department added a compatibility review mapping tool and a case study of Aberdeen Proving Ground’s Army Compatible Use Buffer Program to the website. MDP also strengthened its partnership with the Maryland Department of Commerce and the Maryland Department of Emergency Management’s Office of Resilience by securing a grant from the Department of Defense to fund the development of a collaborative framework for resilience in Maryland’s defense communities. The study will equip Maryland and its regions with resources and an approach guiding collaborative resilience planning in defense communities throughout the state, including installations and associated ranges, special use airspace, military operation areas, and military training routes. The military presence in Maryland contributes \$61.4 billion in economic impact, and can only be preserved and enhanced if we ensure the ongoing resiliency of defense communities which support, and are supported by, military installations.

Regional Roundtables: In late FY24, MDP’s Planning Best Practices division initiated a regional roundtable program to convene local planners and community leaders in the Upper Eastern Shore, Lower Eastern Shore, Southern Maryland, Central Maryland, Western Maryland, and the Metro Washington regions. Accompanied by Regional Planners and other MDP staff members, Secretary Rebecca L. Flora guided discussions on comprehensive planning, Maryland’s Planning visions, sustainable development, regional needs and challenges, and MDP initiatives. The roundtables demonstrated a yearning for MDP guided, regular intra regional coordination and communication. MDP will use the feedback gathered during the FY24 roundtables to inform resource development, legislative proposals, and the development of an annual roundtable program starting in FY25.



Secretary Rebecca Flora and MDP staff traveled the state for a series of six regional planning roundtables. Top left and above: Southern Maryland roundtable. Bottom left: Western Maryland roundtable



Research, Review, & Policy

Chesapeake Bay Restoration Planning

MDP provides long-term vision and local government perspective to the Maryland Chesapeake Bay Workgroup, which provides recommendations to Governor Moore’s Bay Cabinet. In FY24, MDP supported the Bay Cabinet’s work to implement Maryland’s Phase III Watershed Implementation Plan (WIP) and the Chesapeake Bay Agreement, and to develop the annual Bay Restoration Spending Report. Also related to Bay restoration, MDP serves on the state’s Soil Health Advisory Committee and the Board of the Maryland Water Monitoring Council.

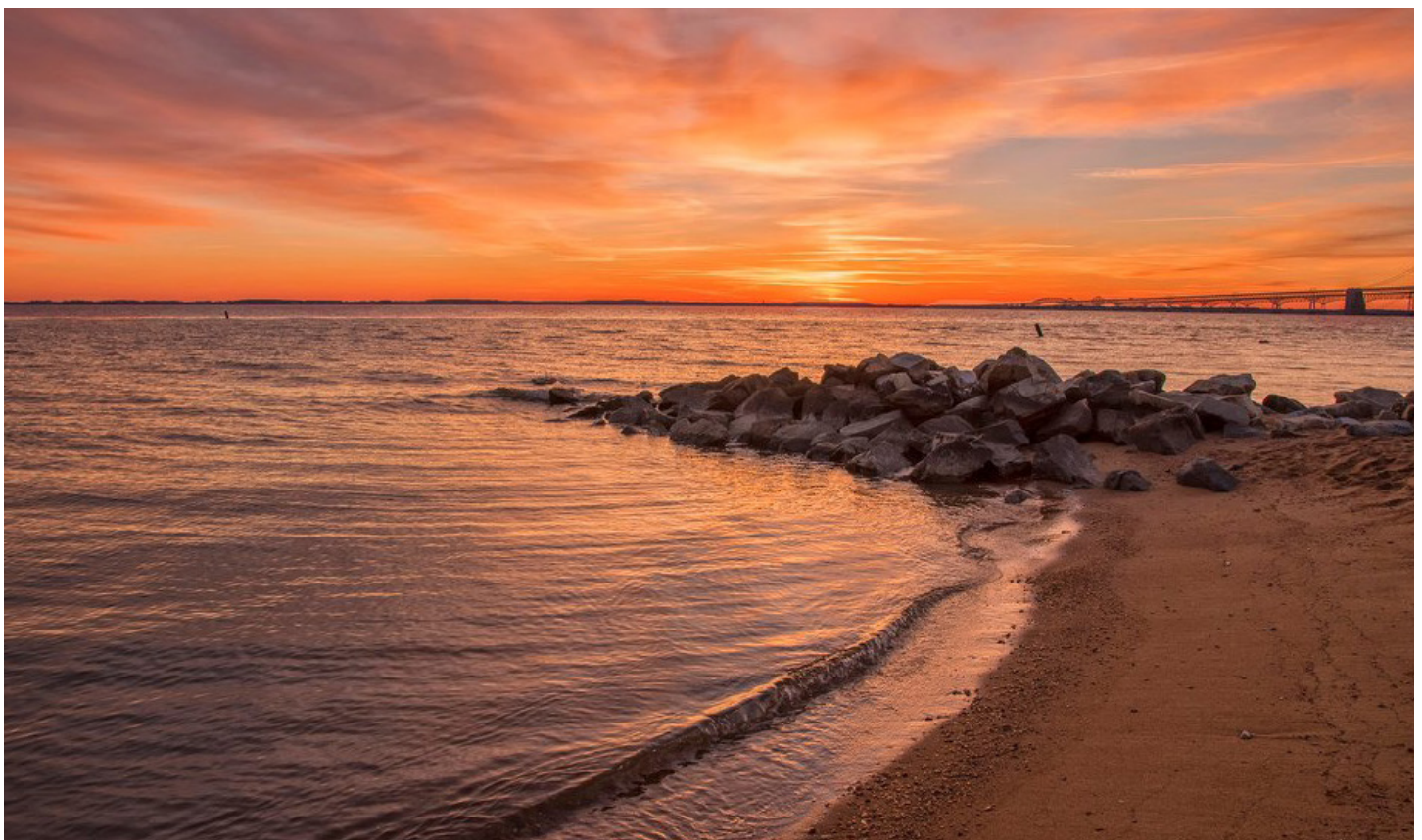
In collaboration with MDE, and in support of MDP’s Water Resource Element (WRE) guidance, MDP secured free technical assistance from the U.S. Environmental Protection Agency for three local utilities (Middletown, Boonsboro, and Emmitsburg) to integrate resiliency planning.

Land Preservation

To support state and local land conservation and preservation efforts, MDP, in coordination with DNR, completed quarterly updates to the [Maryland Protected Lands Dashboard](#).

To support the dashboard, MDP led an interagency team to identify new approaches for obtaining preservation data from local land trusts and developed and presented a webinar to encourage land trusts to provide updated data. Also, MDP participated in an interagency workgroup to finalize the mandated plan to meet the new statewide land preservation goals established by the 2023 Maryland the Beautiful Act.

In coordination with the DNR Forest Service, MDP provided outreach and presentations regarding MDP’s new (planning.maryland.gov/Pages/OurWork/envr-planning/forest/forestry-guidance.aspx) guidance for local governments on how to support Maryland’s forestry industry through changes to local ordinances.



The Chesapeake Bay at sunset

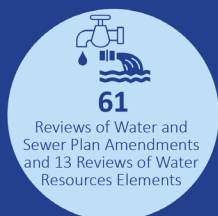
Brownfield Redevelopment Outreach

In cooperation with MDE, MDP continued its brownfield redevelopment assistance initiative by serving as a liaison to counties and municipalities interested in accessing technical and financial resources from federal and state agencies. In FY24, MDP launched its project website, developed and posted flyers (including a Spanish translation), sent letters to property owners, continued to hold meetings with its property owner and community organization outreach advisory committees, completed quality assurance planning requirements, and participated in community meetings to support implementation of a 3-year, \$300,000 EPA grant to provide free environmental site assessments for brownfields in Baltimore County's East Side.

Using available grant funds, MDP attended the National Brownfields Conference in Detroit to further develop positive working relationships with our MDE and local government partners, connect with government and non-governmental experts, and to expand program capacity through conference sessions. In addition, MDP continued to meet with local jurisdictions to identify priority brownfield redevelopment sites and methods for facilitating project implementation, obtained federal and state responses to local technical and regulatory questions, reached out to metropolitan planning organizations and tri-county councils, and held Maryland's third brownfield conference. More information on this initiative can be found on MDP's [Brownfield Redevelopment Assistance Program webpage](#), which provides case studies of successful brownfield redevelopment projects in Maryland and connects local governments to technical and financial brownfield resources.

In the Numbers FY24

Resource Conservation and Management



This adds up to:

Preserving and protecting the environment with a focus on restoration and protection of our treasured Chesapeake Bay.

Maryland's Power Plant Research Program

MDP serves on the Maryland Department of Natural Resources (DNR) Power Plant Research Program (PPRP) interagency committee, which reviews proposed energy-generating facilities in Maryland, while ensuring that demand for electricity is met at a reasonable cost and the state's valuable natural resources are protected.

MDP reviews each case to support PPRP's technical report, including project consistency with local zoning and comprehensive plan policies, and MHT's analysis and recommendations to avoid potential adverse impacts to historic and cultural resources.

State Clearinghouse for Intergovernmental Assistance

The State Clearinghouse for Intergovernmental Assistance (Clearinghouse) is Maryland's designated single point-of-contact to coordinate local government and state agency review of federal or state projects involving financial assistance or development. The review, which is mandated by federal and state executive orders, and state law and regulations, facilitates alignment of plans and policies between federal, state, and local governments. All projects and reviews can be accessed on MDP's website via the [Intergovernmental Monitor](#).

In response to [HB927/SB744](#), "Housing and Community Development – Affordable Housing – Excess Real Property," MDP continued its work leading an interagency team with the DGS and the DHCD to analyze the new law and to finalize an implementation protocol based on each agency's experience and available resources to evaluate the affordable housing potential of proposed excess real property.

In the Numbers FY24

Maryland State Clearinghouse



Maryland State Clearinghouse Review

This adds up to:

Preventing conflicts with local plans when federal and state money is funding a project.

Maryland InfoPortal

MDP continued its biannual updates of the Maryland InfoPortal tool (planning.maryland.gov/Pages/OurWork/Maryland-InfoPortal.aspx), which is the one-stop-shop for finding financial and non-financial assistance offered by state agencies. MDP hosts this digital catalog and coordinates the timeliness and accuracy of the information with a network of contacts.

Interagency Commission for School Construction

MDP continues to be one of three state agencies supporting the Interagency Commission for School Construction (IAC), the nine-member commission that oversees Maryland's \$285 million investment in K-12 school facilities. Staff works closely with the executive director, the Maryland Department of General Services (DGS), the Maryland State Department of Education, and the 25 Local Education Agencies (LEA) across the state throughout the annual planning cycle that results in the allocation of these state dollars to local projects.

Each year the process begins as MDP coordinates with local facility planners to reconcile enrollment projections. These projections support the analysis and help to define local needs in each LEA's Educational Facilities Master Plan, which MDP reviews with its IAC partners and precedes the production of the annual Capital Improvement Program. During the CIP process, MDP provides assistance in determining the Priority Funding Area status of all new schools and major renovations that add school capacity.

In FY24, MDP continued to work closely with IAC staff on several initiatives designed to create objective measurements of facility conditions and other considerations that inform the need for future investment. As the capacity of the IAC has grown, MDP has continued to collaborate on a variety of data-driven applications, such as the Maryland School Facility Planning Resource application, now under development for internal agency use, and tools intended to improve the planning of school facilities so that the IAC can continue to allocate resources efficiently to the benefit of all students across the state. Most recently, in coordination with LEA's, MDP developed a statewide school attendance zone map that MDP and IAC staff can use to evaluate needs of adjacent schools.

Transportation Planning

In FY24, Secretary Rebecca L. Flora continued to serve on the [Maryland Commission on Transportation Revenue and Infrastructure Needs](#) (the TRAIN Commission), which was established by Chapter 455, Acts of 2023, to review, evaluate, and make recommendations on the prioritization and funding of transportation projects. The Commission completed its interim report in January 2024 and will complete its final report in January 2025.

Following the Francis Scott Key Bridge collapse, staff developed briefing material for Secretary Flora, including its potential impacts on Maryland's transportation system and economy, lessons learned from other similar bridge collapse incidents, and next steps for the rebuilding process.

As mandated by law, MDP collaborated with MDOT to evaluate proposed major transportation projects to ensure consistency with Maryland's Planning Visions and compliance with Maryland's Priority Funding Area

requirements. MDP also is required to review statewide and regional transportation plans and programs to recommend improvements that recognize the relationship between transportation and planned land use. Overall, this work supports sustainable growth in Maryland, including reducing vehicle miles traveled, supporting compact and mixed-use development, and increasing the availability and use of alternative transportation.

In FY24, MDP collaborated with MDOT to analyze seven major state transportation projects, including associated National Environmental Policy Act (NEPA) studies:

- Francis Scott Key Bridge Rebuild Project
- Baltimore Red Line
- Bay Bridge Crossing
- I-495 and I-270 Managed Lanes
- US 219 project in Western Maryland
- I-495 Southside Express Lanes
- I-95 at Medical Center Drive Interchange Improvement in Prince George’s County

In addition, MDP reviewed and provided written comments and/or technical support for the following local, regional, and state transportation plans and programs:

- County and municipal comprehensive plans and transportation elements
- 2050 Maryland Transportation Plan
- Statewide Bicycle and Pedestrian Master Plan
- FY24-29 MDOT Consolidated Transportation Program
- Baltimore Regional Transportation Board’s (BRTB) long-term plan, Resilience 2050: Adapting to the Challenges of Tomorrow
- MDOT Annual Attainment Report on Transportation System Performance
- Maryland EV Infrastructure Program Implementation Plan
- Maryland Zero Emission Electric Vehicle Infrastructure Council Annual Report
- MARC Growth and Transformation Plan
- BWI-Air Cargo Market and Facilities Analysis
- UMD 2023 Commuter Survey Report

To support various transportation planning efforts, MDP develops online tools to assist MDOT, local communities, stakeholders, developers, property owners, and others. Please see the Geospatial Data and Analysis Unit section of this report for FY24 online tool development activities.

Additional MDP transportation planning activities included providing MDOT with grant application review assistance to support state funding decisions through the Maryland Bikeways program, developing and distributing a comprehensive plan transportation element survey of local planners, and providing MDOT with an updated inventory of local pedestrian and bicycle plans, policies, and regulations, as well as a new inventory of local policies related to Connected and Autonomous Vehicles (CAV).

In FY24, MDP continued to support multimodal transportation initiatives at the state, regional, and local level through participation in state and metropolitan planning organization committees including the Maryland Bicycle and Pedestrian Advisory Committee, Maryland Zero Emission Electric Vehicle Infrastructure Council, Maryland CAV Group, RAISE Baltimore Transit Priority Project, State Freight Advisory Commission, BRTB, UMD-NCSG Transportation Policy Research Group, and BRTB’s Bicycle and Pedestrian Advisory Group. MDP also participates in Maryland’s iMAP Technical Committee to advocate for a systemic, coordinated data development approach, and to share best practices in geospatial application development, particularly to support online multimodal transportation planning tools.

Interagency Coordination and Subcabinet Support

MDP leads and supports several multidisciplinary efforts, including support for several subcabinets, commissions, and executive orders.

Smart Growth Subcabinet: The Smart Growth Subcabinet (SGSC) has been reinvigorated under the Moore-Miller Administration. Starting in June, the SGSC is meeting monthly to establish an agenda for FY24, identifying policies, programs, and projects where SGSC agencies can collaborate to promote sustainable growth and neighborhood vitality throughout the state. In FY24, MDP staff working through the Smart Growth Coordinating Committee reviewed and provided feedback on 27 Sustainable Community renewal applications and three new applications, and conducted site visits to and/or submitted comments on more than 300 neighborhood revitalization grant applications for projects with approximately \$200 million in requested funds and \$70 million of available funding.

Commerce Subcabinet: The Assistance, Education, and Training unit submitted bi-monthly reports for the Commerce Subcabinet's Regional Resources Workgroup. These reports, completed in collaboration with regional staff from other state agencies, included information on pending and progressing developments, local leadership updates, and opportunities for enhanced interagency collaboration benefiting five Maryland regions and the jurisdictions therein. The division manager compiled and presented the reports for each meeting of the Commerce Subcabinet. In the second half of the fiscal year, the division manager partnered with Commerce staff to update regional team rosters to reflect assignments under the Moore administration and assign new team leaders to Baltimore and Washington metropolitan regions.

Compatible Use Website and Handbook: In late FY20, Commerce was awarded a U.S. Department of Defense Office of Economic Adjustment grant to develop an Energy Siting Study and Compatible Use Website and Handbook that will support mutually beneficial development between Maryland's jurisdictions and military installations. MDP staff assisted Commerce with formulating the grant application. In FY23, MDP led the compatible use effort in collaboration with Commerce, a vendor team, and a stakeholder advisory group composed of local planners and Maryland military representatives. MDP published the website and handbook, consisting of 114 pages of new content that will help Maryland jurisdictions and neighboring military installations better coordinate planning and economic/community development efforts. The website includes Maryland Case studies, comprehensive planning guidance, descriptions of supportive resources, and a calendar of military and defense community events and news. By using the website and handbook resources, military and community partners will be able to preserve the mission and vital economic impact of the installations while also facilitating the advancement of county and municipal objectives.

Transportation Coordination: In FY24, MDP continued to coordinate with local planning agencies, metropolitan planning organizations, and MDOT on transportation data collection, transit-oriented development (TOD) designations, multi-modal promotion, project development, and plan preparation.

Maryland Office of Resilience Support: MDP supports the Maryland Office of Resilience (MOR) through participation in leadership and staff-level meetings. In FY24, MDP provided feedback on the MOR's development of a state-level definition of resilience, an inventory of state agency resilience work, and the framing of the draft statewide resilience strategy.

Climate Change Commission Support: MDP serves as an active member of the Maryland Commission on Climate Change (MCCC) and also participates on the MCCC Adaptation and Resiliency Working Group, providing constructive feedback on this commission's procedures, work plans, and policy recommendations. Throughout FY24, MDP worked with DNR to lead an interagency workgroup to develop a draft Maryland wetland adaptation strategy and contributed to MDE's Climate Pollution Reduction Plan. MDP also provided its annual report on greenhouse gases prevented through compact development in Maryland, partnered with DNR to assist jurisdictions with nuisance flood planning, participated in the Maryland Resiliency Partnership to support Maryland Flood Awareness Month, maintained the department's solar facility siting guidance webpage, participated in multiple interagency workgroups to contribute to DNR's draft statewide adaptation plan, and continued to lead an interagency team to facilitate implementation of Maryland's Plan to Adapt to Saltwater

Intrusion and Salinization. MDP initiated the required 5-year update of the plan, coordinating with subject matter experts to obtain the latest state of the science and recommendations concerning this issue.

Patuxent River Commission Support: MDP participates in and serves as lead staff for the Patuxent River Commission. During FY24, MDP supported the Commission’s effort to identify criteria and develop materials for assisting Patuxent River watershed jurisdictions with establishing new wetland parks.

Outdoor Learning Partnership Support: MDP participates in Steering Committee and Leadership Committee meetings to facilitate implementation of the Outdoor Learning Partnership initiative, a multi-agency effort to empower Maryland’s youth to grow as environmental stewards that access, conserve, and restore our natural resources to ensure a climate-ready Maryland.

Critical Area Commission Support: MDP participates on the Critical Area Commission as one of 29 members (and one of seven state agencies) to support implementation of the Maryland Critical Area law and to encourage approaches that respect local government autonomy and provide adequate flexibility.

Maryland Agricultural Land Preservation Foundation (MALPF) Support: To facilitate state and local efforts to support Maryland’s agricultural industry and land conservation and preservation efforts, MDP participates as one of four state agencies on the board as one of 13 members.



Aerial View of Annapolis with the State House Dome

Geospatial Data and Analysis

The Geospatial Data and Analysis division uses analytical tools and processes to provide the public, local and state officials, and decision makers timely and accurate data and analysis.

Land Use

Statewide Land Use Map Update: The statewide land use map is envisioned to show generalized locations of developed land, including varying densities of residential land as well as commercial, industrial, institutional, other developed, and undeveloped resource land. In February of 2024, MDP completed development of the Draft Statewide Land Use Review application which provides local jurisdictions a tool to provide feedback on proposed draft land use. MDP staff held a webinar in early February 2024 to demonstrate the Draft Statewide Land Use Review Application. MDP is processing comments received from local jurisdictions and will release the final product as a beta version for public use and further testing.

Protected Lands

Data about the location of lands conserved and preserved under public ownership or easement are gathered from state and local agencies and private conservation organizations, aligned to *MdProperty View* digital parcels, and then integrated into a single GIS dataset. The data enables MDP to complete analyses that support local planning efforts and create custom maps showing the distribution of protected lands. Staff continues to maintain an interactive land conservation and preservation dashboard, initially developed in FY19, the Maryland Protected Lands Dashboard, which can be found [here](#).

This FY, MDP worked extensively with DNR to collect more information on easements from Land Trusts.

Municipal Annexations

In FY24, MDP staff mapped 23 new annexations in 16 municipalities following community approval and submission of the appropriate documentation. A majority of annexations (86%) resulted in priority funding areas (PFA), which is a 15% increase over last year. Once mapped, data and applications were updated with these new annexations.

Sewer Service Areas

Statewide Sewer Service Area Update and Amendments: MDP works with all counties and municipalities to collect sewer service area data. Staff updated state sewer service data to reflect 38 amendments approved by MDE in FY24 from 8 different counties and updated all of Carroll County and Charles County based on their MDE-approved Master Plan for Water Supply and Sewerage Systems. MDP is the sole state agency that updates and maintains a statewide sewer service area database.

MALPF Updates

MALPF Updates: Under an agreement with the Maryland Department of Agriculture (MDA), MDP updated GIS polygons for new MALPF easements and produced maps in PDF format for use at Board of Public Works meetings. The unit then integrated settled easements into MDP's Protected Lands Database in support of GIS analyses. A statewide MALPF map was submitted to MDA for their annual report.

Generalized Zoning

MDP completed an update of generalized zoning data. Zoning data was collected directly from all 24 counties and 100+ municipalities. After aggregating and generalizing the data, jurisdictions were invited to review and provide feedback on the generalized zoning tables and the generalized zoning map. The update included changes to the methodology, generalized zoning categories, new spatial data, and updated summary tables. The generalized zoning data is incorporated into several online applications and used in several analyses both internally to MDP and for other agencies.

Site Constraints

Site Constraint Update: MDP developed and processed a model that incorporates state-wide and county specific environmental site constraints specific to local regulation. Models and documentation were developed for each county using best available data and include information such as steep slopes, tidal, and non-tidal wetland buffers, stream buffers, flood plains, protected lands, and open space to be used to reduce the developable area for planning purposes. This product will be completed pending quality control and comparison with existing data.

Transportation

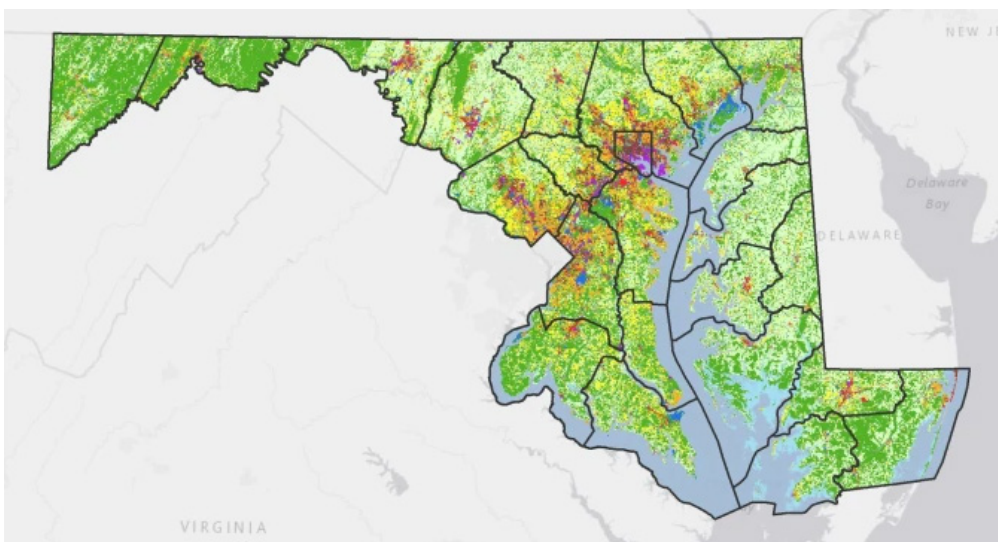
Transit Station Area Profile Tool: The [Transit Station Area Profile Tool](#) is designed to encourage transit-oriented development by providing users socio-economic, demographic, employment, median housing sales, ridership and more at Maryland's rail transit station areas. MDP staff continue to maintain the Transit Station Area Profile Tool, while planning for the future. The application, now in its seventh year, is undergoing a database redesign, which will make it easier to maintain the underlying map and chart information. MDP staff are investigating next generation development platforms to ensure this tool continues to be a valuable planning resource.

The Transit Station Area Profile Tool continues to serve as a valuable planning resource, now in its seventh year.

Master Stations Database Update: In FY24, MDP staff began developing a data model to better organize existing transportation-related information with a goal to improve database performance, integrate with the Maryland Transit Administration's Transit-Oriented Development dataset, and provide a streamlined maintenance workflow. The Master Stations database is used in the [Transit Station Area Profile Tool](#), the [Transit-Oriented Development as a Redevelopment Tool StoryMap](#) and other transit-oriented development (TOD) and affordable housing initiatives at MDP.

Transit-Oriented Development in Maryland Hub page: MDP staff continue to support a multi-agency collaborative effort to promote transit-oriented development through the [Transit-Oriented Development in Maryland](#) hub page. This planning resource provides information on state agency roles and links to geospatial data and applications, with content provided by the Maryland Department of Transportation, Department of Housing and Community Development and the Department of Commerce.

Transit-Oriented Development as a Redevelopment Tool: The [Transit-Oriented Development as a Redevelopment Tool StoryMap](#) promotes Maryland Department of Housing and Community Development (DHCD) grant-funded projects near existing rail transit and encourages local jurisdictions to consider affordable housing and mixed-use development opportunities near transit. MDP and DHCD continue to collaborate on affordable housing initiatives and policies.



**Maryland's Statewide
Land Use Map**

Technical Assistance

Baltimore County East Side - EPA Grant Project Area Mapping Application: The [Baltimore County East Side - EPA Grant Project Area Mapping Application](#) displays the 52 census tracts that make up the Baltimore County East Side Revitalization Community-Wide Assessment Grant priority area. The grant was awarded by the Environmental Protection Agency (EPA) to the Maryland Department of Planning (MDP) to fund environmental site assessments at brownfield locations in Eastern Baltimore County communities. The map also shows several state and county incentive programs that are co-located with the 52 census tracts, where special financial incentive opportunities may be available for properties. MDP staff continue to improve the application's functionality while including new datasets such as the community outreach event locations.

Intergovernmental Monitor: Proposed Project Locator: The [Intergovernmental Monitor: Proposed Project Locator](#) displays the locations of proposed projects and proposals received by the Maryland State Clearinghouse for Intergovernmental Review (the Clearinghouse) since January 2021 for review, a process for determining consistency with state and local government policies and programs. It includes requests for federal or state financial assistance, state-owned real property, easements, declarations of excess needs, community development block grants, historic nominations, facility plans, school sites, environmental assessments, senior centers, and others. This application is currently available in beta and serves as the map companion to the [Intergovernmental Monitor](#).

The Intergovernmental Monitor: Proposed Project Locator Application currently in Beta release.

Maryland School Facility Planning Resource: The Maryland School Facility Planning Resource provides state agency users with information on historical and projected enrollment, and school utilization. MDP coordinates with the Interagency Commission on School Construction (IAC) to provide technical assistance resources in areas of facility and schools planning

Technical Reviews

In FY24, GDA staff reviewed 10 comprehensive plans and 31 Clearinghouse projects.

Local and State Targeted Growth and Conservation Areas: Local and state targeted growth and conservation areas are locations for coordinated planning, management and resource allocation. The purpose of these areas is to identify where and how local and state governments, as well as the private sector, can work together to achieve common goals. The primary users of this application are the Department of Budget and Management's Capital Budget Division and the state agencies that submit capital budget proposals. MDP updates these layers on an annual basis based on updates to several datasets.

The Geospatial Data Analysis and Visualization unit maintains the state's Growth & Conservation map, illustrating the state's areas for targeted growth and those for conservation

Analysis

Bay Restoration Fund Analysis: As a statutory member of the Bay Restoration Fund Advisory Committee, MDP attends quarterly meetings and advises the committee with the best available information and data analysis in the annual Bay Restoration Fund Advisory Committee status report. MDP reports on the impact that an Enhanced Nutrient Removal (ENR) upgraded wastewater treatment facility may have on growth

In the municipalities and counties in which the facility is located. Growth is measured before and after ENR upgrades within existing and planned sewer service area boundaries and PFAs using GIS mapping software. These findings help assess changes in growth patterns, the capacity of the upgraded facility to meet the demands of current and future users, and possible changes in development patterns that could be influenced by upgrades.

For this year’s reporting period, Planning MDP reviewed development served by 67 major and minor WWTPs with ENR upgrades completed within the time-frame specified in Chapter 257 (HB 893) of 2007- Bay Restoration Fund- Wastewater Treatment Facilities Upgrades- Reporting Requirements. The selection of ENR upgrades to be analyzed in this annual report is based on the following criteria: (1) ENR upgrades completed before January 1, 2022, and (2) have been operational for one calendar year.

This fiscal year, the Baltimore region had the largest regional total increase of new connections since conversion of WWTPs to ENR with 33,760 connections. Statewide, there was an increase of 35,373 additional improved parcels within “S1” (existing sewer) connected during this year’s reporting period. Overall, 80,449 improved parcels have been connected since WWTPs statewide have been upgraded to ENR.

Annual Rural Legacy Submission Analysis: In FY24, MDP completed an annual review and evaluation of Rural Legacy funding applications under a Memorandum of Understanding with DNR to further the goals of conserving and preserving large, contiguous tracts of land that enhance natural resource, agricultural, forestry, and environmental protection.

MDP finalized changes to the Rural Legacy application process in cooperation with DNR, including revisions to the instructions and requirements for applicants to submit geospatial data. These revisions will help streamline the review process.

In addition to the analysis, MDP provided data comparing the amount of protected lands in each Rural Legacy Area by county. This included all Rural Legacy Areas, not just those that applied for funding this year.

Chesapeake Bay Program Support: MDP serves on the Chesapeake Bay Program’s Land Use Workgroup, which oversees the development and review of high-resolution land use land cover data to inform watershed modeling. MDP coordinated state agency reviews of the draft 2021/2022 high-resolution land use land cover data.

The Chesapeake Bay is a vital resource for Maryland’s commercial fishing and crabbing industry, recreation, and environmental health. Planning Data & Research contributes to the analysis capability of the state.

Growth Tier Map Reviews: MDP reviews growth tier maps under Section 1-505 of the land use article and offers jurisdictions technical assistance with tier map updates upon request. MDP worked on five formal tier map reviews and provided technical assistance to two jurisdictions.



A view of rural Maryland

Parcel Data & Mapping

Statewide Parcel Data Management

In FY24, MDP's State Parcel Data & Mapping unit assembled parcel boundary files from local government sources with parcel boundaries, then linked the files to property assessment data for use in GIS and online applications hosted by MDP and other state agencies. This data is also available as a free download from MDP's [website](#) and, in the case of the *FINDER* Quantum product, is bundled with free open source GIS desktop software and a customized project file.

In the Numbers FY24

State Property Mapping

Category	Item	Count
Data Download Products	MdProperty View files	768
	FINDER Quantum files	140
	Parcel Point and Polygon downloads	1,258
Online Parcel Map Visits	FINDER Online pageviews	124,065
	FINDER Online Mobile pageviews	23,373

This adds up to: Citizens and businesses having important data available when they need it.

Additionally, quarterly updates of Assessment data fields linked to the most recent update of parcel points and polygons are available for download. These parcel point and polygon downloads, intended as an interim update to MDP's *MdProperty View* and *FINDER* Quantum products, are available by individual counties and Baltimore City, or by a statewide file.

Tax Map Product Updates and Enhancements

The Parcel Data & Mapping unit performed updates and maintenance of the state's tax assessment maps, which are made available in paper or digital image format. They are also used in GIS applications such as MDP's downloadable data products, including *MdProperty View* and *FINDER* Quantum, and as image and map services on MD iMAP, the state's GIS data portal. In FY23, MDP produced updated tax assessment maps for Allegany, Anne Arundel, Caroline, Cecil, Garrett, Howard, Kent, Queen Anne's, St. Mary's and Talbot counties.

In November 2023, the Tax Map Order System online application was enhanced with an electronic shopping cart feature to improve the ability to order paper and digital tax assessment maps

FINDER Online is Planning's online property information and parcel mapping application. Tax maps, property information, and aerial imagery combine to make a robust database of Maryland's 2.2 million parcels.



State Data and Analysis Center

Data Publication and Availability

Maryland State Data and Analysis Center (SDAC) maintains more than 90 datasets, including population and household projections, school enrollment, median household income estimates, and statistics on business establishments and farms. They are posted on the Maryland Open Data Portal, and are foundational to the analyses conducted by public and private sector data users throughout the state. Every year the SDAC updates and revises these databases.

SDAC maintains a library of demographic, economic, and agricultural statistics on its website (planning.maryland.gov/MSDC). Through this digital venue, SDAC makes its research and analysis accessible to the public.

Statewide Public School Enrollment Projections

In FY24, SDAC prepared the 2023-2032 public school enrollment projections report, which projects public school enrollments by grade for all 23 counties and Baltimore City. Historical and projected school enrollment data are presented on a series of tables, charts and graphs. SDAC's projections anticipate actual school enrollment. The 2022 projections were within 0.3% of the actual enrollment.

Population Estimates

SDAC prepared a series of analyses based upon data from the Census Bureau's Population Estimates Program vintage 2023 release. These efforts included national and state level comparisons, as well as the preparation and publication of a series of tables detailing demographic estimates of the resident population for Maryland's cities and counties, including summary tables by age, race, and sex.

Employment Projections by Industry

SDAC staff prepared and posted a new set of employment projections by industry sector for Maryland and its 24 jurisdictions. The new set of projections are based on data from 2010 to 2020 and the horizon for the projections is 2050.

2020 Census

The U.S. Census Bureau releases data products from the 2020 Census on a rolling basis. These products may be accessed on the SDAC website (<https://planning.maryland.gov/MSDC/Pages/census/censusdata.aspx>). The data products were prepared for the following geographies: nation, state, county, municipalities, census designated places, congressional districts, Senate and Delegate legislative districts, precincts (voting districts), census tracts, block groups, and blocks. Due to differential privacy, certain detailed characteristics were not made available at smaller geographies. SDAC also provides technical assistance to MDP staff, government agencies, elected officials, and the general public.

In September 2023, SDAC prepared detailed profiles on the DHC-A for the state, jurisdictions, places, and census tracts. These profiles include population counts and sex-by-age statistics for approximately 1,500 detailed racial and ethnic groups. These may be accessed on the SDAC website (<https://planning.maryland.gov/MSDC/Pages/census/Census2020/2020-Census-DHC-A-B.aspx>).

Technical Assistance

SDAC provided assistance to the Governor's Office of Children by providing child poverty data and analyzing child poverty data along with school poverty data to identify areas of poverty concentration. SDAC participated in the Maryland Health Equity Commission and provided Census data to the Commission. SDAC provided data assistance to DoIT with the State Key Performance Indicators (KPI) in developing the State Plan. SDAC also provided assistance to the Governor's Performance Subcabinet by providing data and analysis for key metrics for official poverty measure and supplemental poverty measures.

Redistricting Data and Mapping Assistance

SDAC provided customized legislative maps and detailed precinct boundary maps in FY24, creating approximately 40 customized maps, and responding to redistricting requests from jurisdictions throughout the state.

Group Quarters Analysis

MDP joined with the U.S. Census Bureau to improve the count of persons living in group quarters. Group quarters are places where people live or stay that are owned or managed by an entity or organization providing housing and/or services for the residents. People living in group quarters are usually not related, and include such locations as college residence halls, nursing facilities, military barracks, correctional facilities, and workers' dormitories.

SDAC staff has been working with local jurisdictions to verify and update their Group Quarters (GQ) population facilities and counts. The end result of the GQ update not only will improve SDAC's population estimates and projections efforts, but also contribute to the U.S. Census Bureau's efforts in improving its Population Estimates program.

Post Census Group Quarters Review

The [2020 Post-Census Group Quarters Review \(PCGQR\)](#) program enables governmental units to request the U.S. Census Bureau review GQ population counts inaccurately tabulated during the 2020 Census.

Anne Arundel County government, in coordination with SDAC staff, submitted a PCGQR request to correct the April 1, 2020 count of group quarters in Anne Arundel County. MDP determined the Census Bureau misidentified housing types located within the U. S. Naval Academy, and did not add persons living in specified group quarter units to the Anne Arundel County group quarters population total. The result of this review was to add more than 4,000 residents to the official Anne Arundel County count and therefore the overall Maryland total population count.

Housing Sales and Residential Development Data

SDAC prepared summary reports on residential sales inside and outside of Priority Funding Areas by type of residence for all jurisdictions.

Based on data from the Census Bureau's Building Permits Survey, the Maryland SDAC creates monthly, quarterly, and annual reports on new housing units authorized for construction by building permits. Data on new residential units and buildings including all types of single family and multi-family structures.

These data are updated monthly and published for the entire state, 24 jurisdictions, permit issuing places, and county groups (including specified development areas, and State Planning Regions).

Annual, monthly, and comparative year to date reports are available online for 1999 through 2023.

Localized Economic Analyses

In support of the Transportation Oriented Development project, SDAC developed a comprehensive database that identifies the socioeconomic characteristics of populations within a half-mile radius of each transit and train station in Maryland.

Staff updated federal statistics on jobs and income, prepared rankings and analyzed growth trends. The analysis included personal income by major source and earnings by major industry as well as wages and salaries by major industry.

Dashboard Development

In support of the Maryland Department of Aging's Longevity Ready Maryland project, SDAC staff is developing applications in support of the Governor's Longevity Ready Maryland initiative. Specifically, MDP will create a dashboard, interactive mapping tool, and an index for measuring longevity. Beyond the mechanics of the development of the dashboard, SDAC staff is providing expert guidance on the selection and use of input data that will augment the tool's utility as a resource to help guide policy making, and program development that enhance the lives of older adults.

Metropolitan Statistical Areas

The U.S. Census Bureau provided MDP staff with Metropolitan Statistical Area delineations for Maryland in July 2023. Metropolitan or micropolitan statistical areas contain a substantial population core surrounded by adjacent communities having a high degree of economic and social integration with that core. Mapping products available on the SDAC website display metropolitan and micropolitan statistical areas as well as principal cities within Maryland.

Annual State Data Center Conference

SDAC hosted its annual meeting and workshop for affiliates and census data users in October 2023. Staff from over 20 different state and local agencies attended the meeting, virtually. Presentations included an overview of the Census Bureau's State Data Center program and the relationship between the Bureau and MDP, as well as a demonstration from a Census subject matter expert on a new tool, the Post-Secondary Employment Outcomes (PSEO), that identifies earnings and employment outcomes for college and university graduates by degree level, degree major, and post-secondary institution. SDAC staff provided updates on their work for Anne Arundel County, and on their efforts to count and map Group Quarters by jurisdiction. In addition, SDAC produced a short training video on how to use the API, a statistical tool, to easily access data.

Maryland Historical Trust

In FY24, the Maryland Historical Trust (MHT) administered a wide variety of research, protection, and financial assistance programs that aid state and local governments, nonprofit organizations, and individuals to undertake preservation-related activities. MHT coordinates the “Our History, Our Heritage” blog [bit.ly/MHT-Blog] – in addition to MHT, Jefferson Patterson Park and Museum (JPPM), and the Maryland Archaeological Conservation Laboratory’s (MAC Lab) newsletters, social media, website, and public outreach – which all together have an audience reach of over 1.6 million people.

Office of Planning, Education, and Outreach

Maryland Heritage Areas Program

Governed by the Maryland Heritage Areas Authority and administered by MHT, the Maryland Heritage Areas Program provides targeted financial and technical assistance to 13 Certified Heritage Areas, each of which represents unique aspects of Maryland’s historic, natural, and cultural character and creates unique heritage tourism experiences. Maryland’s heritage areas continued to grow in FY24, expanding the Heart of the Civil War Heritage Area, the Montgomery County Heritage Area, and the Stories of the Chesapeake Heritage Area through boundary amendments that added new places and partner organizations that offer additional resources, engaging stories, and meaningful heritage perspectives.

In the Numbers FY24

Maryland Heritage Areas



This adds up to:

Increased heritage experiences for visitors and residents statewide and local economies boosted.

Heritage Areas Program

In FY24, nonprofits and local jurisdictions submitted 194 grant applications, requesting more than \$9.8 million to foster economic development through heritage tourism projects and activities. MHAA awarded \$5 million to 100 projects, leveraging \$21.4 million in non-state matching support. Sixty-nine competitive capital and non-capital project grants comprised \$3,248,074 of the total funding awarded, with an additional \$100,000 kept in reserve for emergency grants. MHAA grants also helped support the operations of the 13 heritage area management entities (totaling \$1,240,383), 12 block grants (totaling \$300,000), and six grants for marketing (totaling \$211,543). Block grants provide funding for smaller non-capital heritage tourism grants (or “mini-grants,” typically under \$5,000), which heritage area management entities can distribute within their boundaries.

Statewide Preservation Plan

In April 2024, NPS approved Heritage2031 [bit.ly/stateplanMD], Maryland’s new statewide preservation plan for 2024-2031, which serves as a guidance document for agencies, organizations, and individuals engaged in historic preservation and cultural heritage activities in Maryland. Plan preparation takes approximately 18 months, and FY24 covered much of the plan outreach phase, as well as data analysis, writing, production, and approvals. To develop the plan, MHT received feedback from participants around the state, including (but not limited to) representatives of state agencies and local governments, public officials, community advocates, consultants, developers, historic preservation commissioners and planners, stewards of historic properties and cultural sites, members of Indigenous communities and state-recognized tribes, and nonprofit staff and volunteers. Opportunities for public participation included: regional public meetings; regional in-person meetings and virtual meetings on African American heritage, co-sponsored with MCAAHC; a virtual town hall meeting; virtual focus groups organized by topic and profession; a general survey distributed online; and targeted online surveys to specific constituent groups including students, professional and avocational archaeologists, and cultural and historical museums and institutions:

Heritage2031 includes objectives and recommended actions aligned to meet five goals:

5. prioritize community histories and places underrepresented in the historical record;
6. support professionals and the public in historic preservation, archaeology, and cultural heritage efforts;
7. use cultural heritage to enhance climate adaptation, local planning, and economic development activities;
8. improve efficiency and accessibility of cultural heritage data and financial programs; and
9. make the case for preservation.

The statewide preservation plan serves the broader preservation community, not just MHT, but the plan will inform the agency’s priorities and work plan from year to year, and MHT will report on progress in the Annual Report each fiscal year.

Local Government Assistance

The CLG Program, administered by NPS and MHT, recognizes the 23 counties and municipalities in Maryland that have made a special commitment to preservation. MHT awards 10% of its annual allocation from the Historic Preservation Fund to CLG projects and educational opportunities each year. In FY24, the program received four competitive project applications requesting \$87,000 and 12 education and training applications requesting more than \$32,000. Four project grants and 12 grants to support CLG education and training, totaling \$106,052, were awarded.



Mural on the Trolley Trail at the Catonsville Short Line Art & History Trail

Weather It Together Program

The statewide *Weather It Together* program helps Maryland communities protect historic places, archaeological sites, and cultural landscapes from the effects of natural hazards such as flooding, wind, and coastal erosion. Although the program no longer has dedicated staff, in FY24 MHT provided comments on the draft Baltimore City hazard mitigation plan and technical assistance to the National Trust for Historic Preservation and Maryland's Critical Area Commission concerning a climate resilience project in Dorchester County. Staff also presented on MHT's resources for climate and cultural heritage at the Eastern Shore Climate Adaptation Partnership; reviewed and commented on a draft comprehensive plan resiliency element put forward by the Eastern Shore Land Conservancy; and participated in a live-streamed Q&A on historic preservation, natural resource conservation, and resiliency hosted by the League of Conservation Voters. In May 2024, staff organized and moderated a session on climate change and local preservation planning for Maryland Association of Historic District Commissions' annual symposium and presented to the Coast Smart Council on MHT's work on climate adaptation and resilience. Staff continued to participate in the quarterly meetings of the Coast Smart Council and the Maryland Commission on Climate Change's Adaptation and Resiliency Working Group, as well as implementation planning for the Maryland Commission on Climate Change's Adaptation Framework, with a focus on Justice/Equity/Diversity/Inclusion in the state's climate adaptation goals and priorities.



Office of Research, Survey, and Registration

Research and Survey

In FY24, the Historic Preservation Non-Capital Grant Program provided \$113,000 in funding to three archaeological research projects and five architectural research projects. MHT received 25 applications for archaeological and architectural non-capital projects, totaling \$1.4 million in requests.

MHT architectural historians conducted high-priority site visits and historic resource documentation, often to assist property owners, state agencies, and preservation partners. These projects included student engagement and documentation of **St. Luke's United Methodist Church** (Talbot County) at the Vernacular Architecture Forum's Bellevue Field School; an oral history interview with the owner of **Canton Restaurant** (Annapolis); the Orlando Ridout V All Staff Field Day at **Medicine Hill** (Dorchester County), an 18th- and 19th-century site threatened by sea-level rise; the **Old Senate Chamber** (Annapolis), which was experiencing plaster failure; **Mount Aventine** (Charles County), where staff assisted DNR with documentation focused on early 20th-century tenant houses; an early 20th-century log dwelling built with an earlier foundation near **Smithsburg** (Washington County); documentation on a log and stone dwelling within the **Ellicott City Historic District** (Howard County); the endangered **Neikirk Farm** (Washington County) outside of Hagerstown, a log and limestone dwelling that is reflective of German vernacular tradition; and the **Griffith-Burrall Farm** (Frederick County), which has a rare surviving log slave quarter. Staff also undertook an independent research and documentation project involving potato houses, a highly threatened type of agricultural outbuilding on the Lower Eastern Shore. Program staff managed four ongoing NPS Underrepresented Communities grants, including the documentation of Asian American communities in Maryland, American Indian heritage in Baltimore City, an update to the Chestertown Historic District, and the nomination of additional Rosenwald schools to the National Register.

MHT archaeologists conducted ground-truthing at the **Old Treasury Building** (Annapolis), survey work at **Maxwell Hall Equestrian Park** (Charles County), meetings with DNR staff at **Patapsco Valley State Park** (Howard County) to discuss a railroad "tie" from the original Baltimore & Ohio Railroad alignment that was uncovered along a hiking trail, a GPR survey at **Patuxent River State Park** (Montgomery County), and work with the Northeast Regional Archaeology Office of NPS to develop a cooperative agreement related to fieldwork at the **Jacob Jackson Homesite** (Dorchester County). MHT staff archaeologists also assisted with investigations and advised on projects including research and documentation of the Washington-Rochambeau route through Harford and Cecil counties, funded through the NPS American Battlefield Protection Program; a potential Civil War encampment site in Broad Run Park (Montgomery County); and the St. Mary's College of Maryland's project at Chapel Point (Charles County). Staff coordinated with the Coast Guard and other federal entities following the Francis Scott Key Bridge collapse to ensure archaeological resources were considered in the event of any oil or hazardous material spills and to ensure compliance with relevant legislation.

National Register of Historic Places

As Maryland's federally-designated SHPO, MHT nominates Maryland properties to the National Register of Historic Properties, maintained by NPS. Properties newly listed in FY24 include: the Market Center Historic District (listed 7/3/2023), Old West Baltimore (updated 7/10/2023), Grey Rock Mansion (listed 7/10/2023) the Glenn L. Martin Plant #2 (listed 8/14/2023), the Market Center Historic District boundary amendment (updated 8/21/2023), the Park Heights Historic District (listed 8/31/2023) the Worsell Manor complex (listed 8/31/2023), the St. Dennis Catholic Church Complex (listed 11/13/2023), the Griffith House (updated 1/11/2024), the Women's Suffrage Movement in Maryland MPS (listed 1/29/2024), Upland (listed 1/29/2024), the Maryland Club (listed 1/29/2024), the Barclay-East Baltimore/Midway Historic District (listed 3/1/2024), Starr Church (listed 3/1/2024), the Asian American Communities in Maryland MPS (listed 3/4/2024), the Chinatown Historic District (listed 3/4/2024), the George Washington House/Indian Queen Tavern in Bladensburg (updated 4/4/2024), and the Emmitsburg Historic District boundary amendment (updated 4/8/2024)..

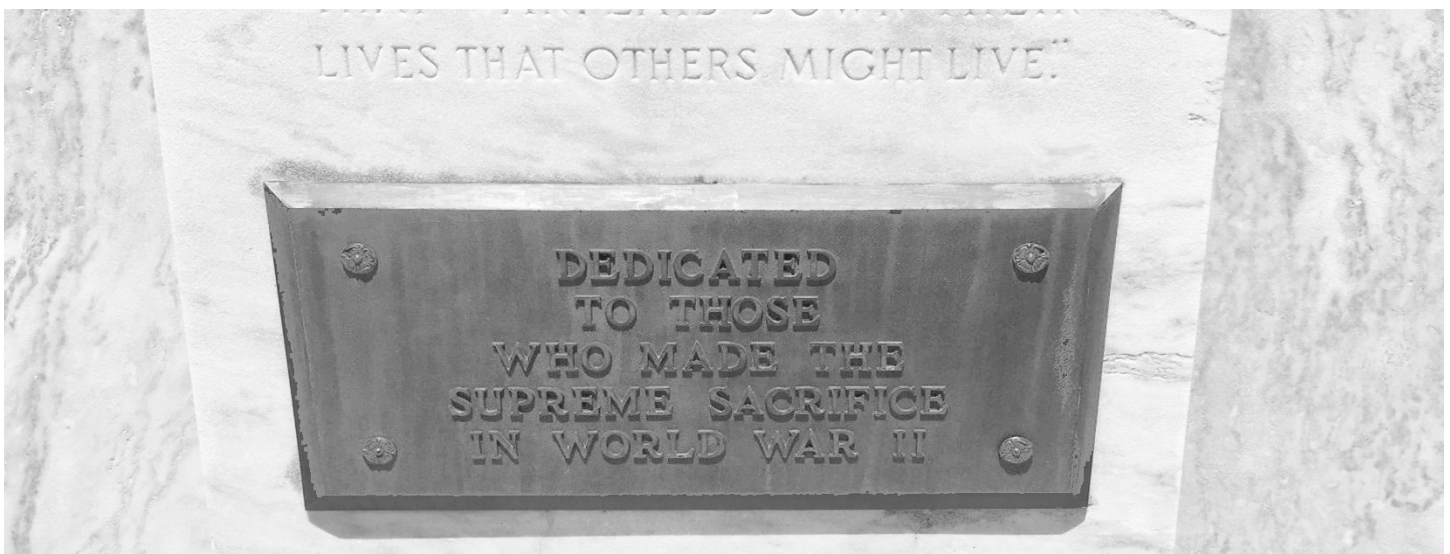
Cultural Resources Information System

MHT provides access to a wide variety of research and documentation materials to a diverse audience. Cultural resource professionals, including architectural historians and archaeologists, use MHT's library in Crownsville each year to research historic and cultural properties. In FY24, MHT added or updated 726 archaeological sites and architectural survey files, as well as 310 archaeological survey reports, standing structures, and survey districts covering 10,368 acres to the Medusa database [bit.ly/MHT-Medusa], which are now available for download. Nearly 30,000 users visited the Medusa pages in FY24, with PDFs downloaded from the database 21,385 times. The MHT Library continues its progress to expand access to library collections with over 130 books added to the collection, in addition to digitizing all 14,810 of the state's archaeological site forms.

In addition to their regular duties, this program acts as webmaster for MHT's website [mht.maryland.gov]. In FY24, they worked with MDP and the Department of Information Technology staff to rebuild and redesign the website, bringing the aesthetic in line with other state-run websites.

Military Monument

In FY24, MHT procured the services of a conservator to make minor repairs to two plaques in Cecil County and one monument in Washington County, with work beginning in September 2023. Repairs to the monuments in Washington and Cecil counties concluded in the Spring of 2024, and a second phase of the comprehensive surface treatments continued in May and June of 2024.



A World War II memorial plaque, Cecil County

Office of Preservation Services

Project Review and Compliance

In FY24, MHT reviewed more than 5,313 undertakings through Section 106 consultation to assess the effects of those projects on cultural resources and formally evaluated 278 resources for their eligibility in the National Register. Consultation resulted in 23 formal agreement documents to resolve the adverse effects of projects on significant cultural resources and establish streamlined coordination procedures for certain programs. Staff closely coordinated with various stakeholders, including governmental agencies, local governments, business entities, consultants, interested organizations, and the public to facilitate the successful completion of the historic preservation review process.

Capital Grants

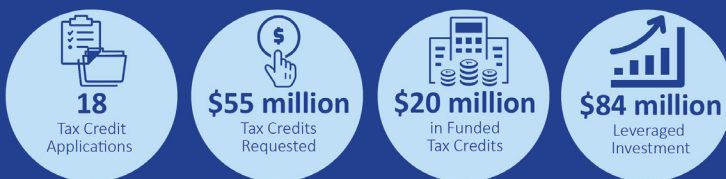
MHT provided \$5 million in capital grants to 24 projects under the FY24 African American Heritage Preservation Program. The program received 107 eligible project proposals requesting over \$20 million. For FY24, the Historic Preservation Capital Grant Program received a \$600,000 appropriation with a total of \$4,000 remaining from prior year funds. Of the 37 applications requesting approximately \$3.1 million, MHT approved seven projects for funding.

Maryland Historic Revitalization Tax Credit Program

Maryland's Historic Revitalization Tax Credit Program has helped restore thousands of homes and commercial buildings that contribute to the distinct character, and economic vibrancy of Maryland's towns, cities, and rural areas. For the FY24 competitive commercial round, 18 applicants sought more than \$55 million in tax credits for construction projects with an estimated cost exceeding \$305 million. MHT awarded over \$20 million in commercial tax credits, expected to leverage more than \$84 million of private investment for 10 projects; an estimated \$1.43 million in small commercial tax credits to 35 proposed projects; and \$1.57 million in homeowner tax credits to 166 residential projects.

In the Numbers FY24

Maryland Historic Revitalization Tax Credits



Maryland Historic Revitalization Tax Credit Program

This adds up to:

Increased private investment
Increased private investment in our future.

Historic Preservation Easement Program

Historic preservation easements, which require that proposed changes to a property go through review and approval by the easement holder, provide the highest form of protection for historic properties. In FY24, MHT acquired two new easements and modified three existing agreements. MHT currently holds a statewide easement portfolio of 709 easements on 934 properties, encompassing approximately 7,650 acres; most easements provide perpetual protection. To provide guidance and advice about ongoing or proposed projects, in FY24 staff members in the program traveled across the state to participate in 75 meetings and site visits in 14 counties and the City of Baltimore. Throughout the fiscal year, MHT's in-house easement committee reviewed and provided recommendations on approximately 178 projects proposed by property owners and managers.

Jefferson Patterson Park and Museum

A 560-acre park located on the Patuxent River in rural Calvert County, JPPM is home to more than 70 archaeological sites as well as historic houses and outbuildings, museum spaces, the MAC Lab, and recreational facilities. The park's mission is to connect people to the past and support the preservation of Maryland's cultural and natural resources. JPPM engages with local and regional audiences through exhibit spaces, interpretive trails, and cultural events including festivals, summer camps for K-12 students, workshops, and other activities hosted onsite throughout the year. This programming takes advantage of the park's rich archaeological, historical, scientific, and ecological resources. In FY24, JPPM continued to see a high demand for outdoor visitation, leading to more than 130,000 people using the site for programs, tours, special events, and general usage.



Jefferson Patterson Park and Museum, Barn

Educational Programs and Events

Throughout the year, JPPM offers a range of educational programming, primarily geared toward K-12 students as well as summer camps, workshops, story times, and fee-based educational programming that appeal to children and adults. In FY24, JPPM hosted several week-long day camps that included Archaeology Camp, Native Skills Camp, River Life Camp, Imagine If Camp, Survival Camp, and Hands on History camp. JPPM organized most of the school field trips on site for CHESPAX, the Calvert County Public Schools' environmental education program. This partnership with Calvert County Public Schools brings every 6th and 8th grader to JPPM for an interactive field trip, including the 8th-grade field trip introduced in FY 2023 that explores the daily lives of local communities during the dramatic social changes of the Reconstruction Era. Several homeschool groups also visited JPPM throughout the year.

In addition to school programs, JPPM shared a wide array of in-person workshops with the public, with topics including terrarium making, basket weaving, bark tanning, historical cooking, and knife making. JPPM's monthly Village Days, which focus on the Eastern Woodland Tribes before 1600 CE, run from May through October. JPPM held guided hiking tours of the park throughout the summer, and in May 2024, JPPM added a new site-wide tour where staff drive visitors around in a small electric vehicle to better learn about the various sites at JPPM

Maryland Archaeological Conservation Lab

At the end of FY24, construction began on the expansion of the MAC Lab, a project that is expected to last 15 to 18 months. Lab staff spent much of FY24 readying the collections and the lab for the construction project. MAC Lab staff began the Engaging with Descendant African American Communities project in FY24, in collaboration with MHT and the Maryland Commission on African American History and Culture, which aims to identify lineal descendants or communities that are culturally affiliated with the remains of at least 15 individuals of African or possible African descent who are currently housed at the MAC Lab. Funding was secured for the project to pay for DNA analysis for the ancestral remains and for the testing of living possible descendants.

MAC Lab staff conserved and consulted on several projects in FY24, which included conservation work on the 18th-century Royal Savage shipwreck, consultation with Monticello and Mount Vernon on their recent findings of wine bottles filled with cherries and mulberries, . and collaboration with ASM and MHT staff to return Native American artifacts from the West River Adena Collection to the two state-recognized tribes – the Piscataway Indian Nation and the Piscataway Conoy Tribe.



Maryland Archaeological Conservation Lab at the Jefferson Patterson Park and Museum, Calvert County

Internal Operations

The Internal Operations Unit provides support to all units of the department, from financial services, information technology, logistics, legislative matters and human resources.

The **fiscal unit** is responsible for compliance with all applicable state and federal fiscal laws, rules, regulations, and policies. The unit establishes and maintains effective internal control structures to prevent, detect, and deter errors, fraud, and abuse. The unit also ensures economic and efficient operations, maintains accurate and complete financial records, provides payroll services, and prepares and develops budgetary and related fiscal reports, including fiscal year closeout submissions.

In FY24, the fiscal unit processed more than 250 purchase orders exceeding \$17 million. The unit recorded more than 700 fiscal transactions and more than 200 journal entries exceeding \$6 million and the agency collected more than \$10 million in revenue.

The Maryland State Retirement Agency audited the agency's payroll records in FY24 to ensure all state laws, rules, regulations and administrative policies relating to enrolling members of the retirement system were accurate and determined the agency was in compliance. Specifically the compliance review tested the records of the department to ensure the following objectives were met:

1. All eligible employees were enrolled in the system
2. No ineligible employees were enrolled
3. Accurate payroll data was reported to the agency
4. Accurate totals of unused sick leave balances were reported

The **Information Technology unit** provides technical support and cybersecurity to the agency and ensures all employees are equipped with the necessary hardware and software to fulfill their duties. The unit is also charged with ensuring the agency's computer server systems are safe and secure.

The unit made significant updates to MDP's servers in FY24. Several production servers were upgraded to improve the state's IT security posture. We migrated a total of seven critical servers to the upgraded infrastructure and disabled one. In FY24, our technology unit designed, developed, and tested several applications, including:

- E-106 Online Applications. Through the MHT e106 system, users provide their requests for Maryland Historical Trust review of state and federal projects by completing an online form and uploading required attachments.
- ECommerce- Upgraded and enhanced our online ECommerce presence.

The IT unit migrated three public payment processes, eliminating the process of collecting paper forms by transferring to an online ordering system. This protects MDP by eliminating the department's collection and storing PII and other sensitive data.

The unit has many statutory projects underway and will be focusing on completing and field testing a number of projects which are under strict timelines.

In FY24, our Operations unit continued its focus on the governor's customer service and employee relations initiatives.

The agency anticipates hiring an Office Administrator to handle general office management duties and will work closely with the state HR unit to fulfill the statutory requirements. The division will emphasize providing employee and manager training sessions and tutorials and will continue our commitment to fill vacancies. In FY24, we hired more than 20 new employees as part of an office reorganization.

External Affairs

External Affairs

External Affairs has two primary areas of focus – Communications and Government Affairs. External Affairs focuses on direct and peripheral relationships to allow the department to accomplish its goal of being a greater resource to state, federal, and local government entities as well as non-government organizations, and serve as an important partner for initiatives furthering the goals of Governor Moore’s administration. It also serves as the point of contact for press inquiries, Public Information Act requests, and other interactions with external entities.

Communications

Communications supports the agency by highlighting the work of MDP throughout the state. It uses social media platforms, our three websites, and constituent subscriber-based email communication to provide information about initiatives and programs, including the department’s work on-the-ground, Maryland Heritage Areas, the Patuxent River Wade-In, and MHT’s Historic Revitalization Tax Credit program, among others.

Through our social media channels, Facebook, X (formerly Twitter), and LinkedIn, we promote the agency’s work, internal and external events, strategic and data-driven webinars, job openings, and more. In FY24, MDP staff posted 927 messages, made 129,339 impressions, and attained 10,864 followers across all social media platforms.

Digital Communications



224
Constituent
Emails
Broadcast



4.3 million
Subscriber
Recipients



29.1%
Email
Open Rate



22,000+
Subscription
Growth



252,654
Subscribers

GovDelivery Email Broadcast



179,420
Website
Users



321,381
Engaged
Sessions



577,168
Pages
Viewed



45,994
Files
Downloaded

Planning.Maryland.gov Website

We sent 224 constituent emails through our GovDelivery subscriber-based engagement system. These were sent to more than 4.3 million recipients and received an open rate of 29.1 percent. Our subscribers grew by more than 22,000 to a total of 252,654 subscriptions to end FY24.

Our website boasted 179,420 users in FY24 in 321,381 engaged website sessions. This resulted in 577,168 pages viewed and 45,994 files downloaded on Planning.Maryland.gov.

Public Information Act Requests



18

Public Information Act Requests from Constituents



18

Complied with 30-Day Requirement



45

Responsive Records Delivered

Communications processed and completed 18 Public Information Act requests over FY23. All requests complied with the 30-day requirement to complete requests. These satisfied requests involved 45 in total responsive records.

Government Affairs

In 2024, MDP made significant strides in our government affairs efforts and legislative activity. Ahead of the 2024 Maryland General Assembly Session (Session), MDP drafted and submitted a legislative package to the Governor's Office consisting of four legislative proposals. This was the first legislative package the Department submitted for consideration in many years, and all four proposals went on to be passed by the General Assembly and signed into law by Governor Moore. Further, MDP expanded the amount of oral and written testimony it submitted for other bills, totaling 19 in all, and completed 49 legislative fiscal and operational impact reviews. Finally, MDP spent critical time building upon existing relationships and establishing new ones with members of the MGA that will help to advance future legislative agendas. Of particular note, MDP provided key aid to the Governor's Office for the advocacy and eventual passage of two key bills in 2024: HB 538- Housing Expansion and Affordability Act of 2024; and SB 482- ENOUGH Act of 2024. This aid was provided by Secretary Rebecca Flora who testified for the passage of both bills and by Planning Services and State Data and Analysis Center staff members who were integral in producing pertinent mapping information. These efforts demonstrate MDP's dedication to legislation that will positively impact the lives of Marylanders. MDP attributes this increased presence during the Session to efforts in raising awareness of MDP services and from the Government Affairs Specialist hired in 2023.

Of the four proposals that MDP put forward during the 2024 Session, the most consequential to the operations of the Department and its collaboration with other State agencies was the Sustainable Growth Subcabinet and Repeal of the Office of Smart Growth bill. This bill revitalized what was previously named the Smart Growth Subcabinet, emphasizing Maryland's commitment to sustainable growth principles through four key changes. First, by renaming the Subcabinet from Smart to Sustainable; second, by altering the Subcabinet's leadership so that the Planning Secretary is now the Subcabinet's Chair and the Secretary of the Department of Housing and Community Development is its Vice Chair; third, by adding the Secretary of the Maryland Department of Emergency Management as a member; and fourth, by adjusting the Subcabinet's focus to also hone in on matters of equity and resiliency. Collectively these changes charge the Subcabinet with focusing not only where we grow as a state but also how we grow, and it is the goal of MDP to utilize the expertise on this Subcabinet and its Coordinating Committee to bring positive change to the lives of all Marylanders.

Given the wide expertise of staff within MDP, the assistance it gives local jurisdictions, and the cross-cutting nature of planning as a practice, it is the aim of MDP to be both a leader and a key resource for legislative actions related to planning practices. MDP has already achieved this aim in the 2024 Session through the success of its legislative agenda and its aid in getting other significant pieces of legislation passed, and a key focus of MDP's Government Affairs division will be to build on this history of success for the 2025 Session and thereafter. This will serve to heighten the profile of MDP and its services and strengthen its collaborative ties to other state agencies.

Smart Growth Information Clearinghouse and Webinar Series

MDP continued to work with the U.S. Environmental Protection Agency (EPA) in FY24 to transition the smartgrowth.org website to its new home with Smart Growth America and retire the remainder of the Smart Growth Information Clearinghouse due to inactivity and an insecure web-based platform. MDP continues to organize and host the Sustainable Growth Webinar Series, formerly part of the Smart Growth Information Clearinghouse. The Smart Growth Network continues to serve as a partner in helping to plan and promote the webinar series, and MDP serves on its Steering Committee. The Smart Growth Network, coordinated by the EPA, is a national alliance of advocates, practitioners, policy makers, and local leaders working towards a shared vision for land use and infrastructure policies and actions that result in healthy, equitable, sustainable, and prosperous communities for all. The webinar series is designed to educate and inform citizens, planners and local government officials in Maryland and nationwide. Participants in the webinar series are eligible to earn American Institute of Certified Planners (AICP) continuing education credits for participating in this live programming, which is a strong driver in the program's success.

In FY24, MDP hosted 14 webinars, attracting a total attendance of 15,921 planners and local government employees from Maryland and around the country. The Sustainable Growth Webinar mailing list includes over 36,000 planners and local officials nationwide and internationally. Since the webinar series launched in 2017, MDP has engaged and educated approximately 97,000 webinar attendees on smart growth topics from affordable housing to zoning. All past webinars are available for viewing via our website at planning.maryland.gov.

Walkinar 5 – October 31, 2024

Sustainable Growth: *How walkability creates more equitable and vibrant places for all*



JOE McANDREW
MDOT Assistant Secretary for Project Development and Delivery

JAWAUNA GREENE
MDOT Assistant Secretary for Public Affairs and Strategy



REBECCA L. FLORA, AICP
Secretary of Planning



JACOB R. (JAKE) DAY
Secretary of Housing & Community Development



LAURA HERRERA SCOTT, M.D.
Secretary of Health

As Maryland's official state exercise, walking has many cross-cutting benefits to sustainable growth, from improved community vitality, health outcomes and transportation choices to reduced pollution and vehicle traffic. During this webinar, members of Governor Wes Moore's Sustainable Growth Subcabinet discussed:

- How walkability and related issues are coming together to contribute to more equitable and vibrant communities throughout Maryland
- Funding and tactics for increasing walking in Maryland
- Correcting past inequities in planning and government services

The presentations were followed by a moderated discussion by Jawauna Greene, Assistant Secretary for Public Affairs & Strategy, including questions from the audience.

One of the Sustainable Growth Webinars this year featured a panel of members of Governor Wes Moore's Sustainable Growth Subcabinet, Secretary of Planning Rebecca Flora, Secretary of Housing Jake Day, Secretary of Health Laura Herrera Scott, M.D., and Assistant Secretary of Transportation Joe McAndrew.

MDP Avoids Filling Landfills

Throughout our move from the State Office Complex to our new offices at 120 E. Baltimore Street, MDP was attentive to keeping much of the items that we no longer needed out of our landfills.

Pictured are some of the items that were donated to area schools.

Office Supply Donations



14
Schools and
Organizations



60
Boxes



9
Supply
Types







MDP Staff

Office of the Secretary

Rebecca L. Flora, AICP, LEED ND / BD+C, Secretary

Kristin Fleckenstein, Deputy Secretary

Yasmin Behram, Executive Assistant

Cassandra Malloy, Office Administrator

Internal Operations

Jeff Cann, Assistant Secretary

Nital Goswam

Cecilia Maposa

Tiffany Nance i

Barbara Wise

Les Hodgson

Oumy Kande

Ted Cozmo

Doug Lyford

Greg Schuster

Marlon Castillo

External Affairs

David Buck, Director

Communications

Kristen Humphrey

Jill Lemke

Jessica Meyer

John Coleman

Government Affairs

Andrew Wilson

Planning Services

Chuck Boyd, Assistant Secretary

Planning Best Practices

Joe Griffiths

Susan Llareus

Brooks Phelps

David Dahlstrom

David Cotton

Joe Rogers

Keith Lackie

Stephanie Mullinix

Carter Reitman

Korey Layman

Research, Review & Policy

Jason Dubow

Deborah Herr Cornwell

Sylvia Mosser

Bihui Xu

Rita Pritchett

Sophia Richardson

Vicki Day

Geospatial Data and Analysis

Mike Haxel

Deborah Sward

Ellen Mussman

Joseph Brunt

Parcel Data and Mapping

Gary Maragos

Robert Maxwell

Barbara Ewell

Tyler Shank

State Data and Analysis Center

Al Sundara, Director

Data Applications

Shawn Kimberly

Travis Beal

Research

Krishna Akundi

Tyler Schlachter

Maryland Historical Trust

Elizabeth Hughes, Director and State Historic Preservation Officer (SHPO)

Operations Management

Stella Olanipekun

Kathy Monday

Katrina Leavitt

Office of Planning, Education, and Outreach

Nell Ziehl

Ariane Hofstedt

Andrew Arvizu

Tina James

Scott Hansen

Meagan Fairfield-Peak

Kyle Byington

David Marin

Pelumi Aluko

Dial Keju

James Newton

Olusola Omisakin

Anne Raines, Deputy Director and Deputy SHPO

Traci Verzi

Sabrina Roundtree

Caitlin Swaim

Martha Waldron

Brenna Spray

Office of Research, Survey, and Registration

Marcia Miller
Matt McKnight
Zachary Singer
Stephanie Soder
Heather Barrett
Allison Luthern
Jessica French
Grace Davenport
Jacqueline Shin

Sierra Beighey
Gregory Brown
Mary Zell Galen
Jennifer Chadwick-Moore
Lara Westwood
Mary Kate Mansius
Jennifer Cosham
Louie Kiskowski

Office of Preservation Services

Collin Ingraham
Liz Casso
Dixie Henry
Becky Roman
Tim Tamburrino
Kate Jaffe
Carolyn Nosacek
Dana Marks Halpert

Carey L. Jones
Alan Gibson
Matthew Migliozi
Stacy Montgomery
Bill Hersch
Susan Langley
Troy Nowak

Jefferson Patterson Park and Museum

Administration

Rod Cofield, Executive Director
Eric Frere
Jeanna Plants
Bridget Rinker

Victoria Hall
Lauren Canty
Samantha Boyd

Education

Debra Rantanen
Elizabeth Brant
Nate Salzman

Jeff Nikolaus
Candi Claggett

Facilities Management

Dimitrios Papadakis
Jim House
Steve Embrey

Lemuel Thomas
Lindsay Hollister
Derek Mathieson

Maryland Archaeological Conservation Lab

Patricia Samford

Scott Strickland

Rebecca Morehouse

Hannah Wells

Megan Kearns

Sara Rivers Cofield

Alexandra Glass

Nichole Doub

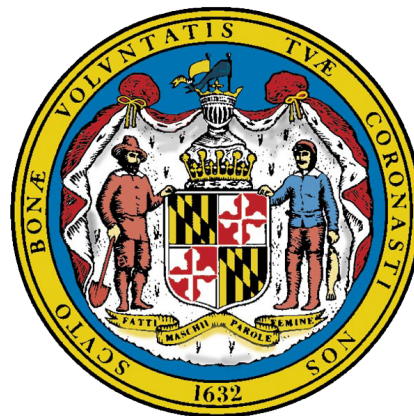
Arianna Johnston



Maryland

DEPARTMENT OF PLANNING

Maryland Department of Planning
301 W. Preston St., 11th Floor
Baltimore, MD 21201
Planning.Maryland.gov
(410) 767-4500 • (877) 767-6272
Publication Number: 2024-101 (MSAR #620)
December 2024



Wes Moore, Governor
Aruna Miller, Lt. Governor

Rebecca L. Flora, AICP, LEED ND / BD+C, Secretary
Kristin Fleckenstein, Deputy Secretary