



# Kalamazoo's Transportation Journey

Rebekah Kik, Asst. City Mgr.

City of Kalamazoo

(architect, planner, invisible disability advocate  
& avid bike rider)

Dustin Black, Advocate for Local Change

(also happens to work as a transportation  
engineer at the Michigan DOT)

# Where it all started... architecture school.

- **2013 Come back to Kalamazoo to be with family;** No car for over 6 years.
- **I was away...** working with transportation engineers and planners for 6 years... I drew the pretty pictures.
- **City Planner for Kalamazoo, MI in 2014** – after working as a consultant on a 4-lane to 3 lane road diet project.
- **Desire to reach out to people who did not have transportation choices;** Met an incredible group of change agents.



The picture shows Rebekah on Portage St. in Kalamazoo with walkability guru Dan Burden, a dear colleague who mentored Rebekah early in her career.



# Dustin Black

[blackd@michigan.gov](mailto:blackd@michigan.gov)

@EngineerDustin



Dustin Black with his electric cargo bike. Dustin is not a 'cyclist' but has rather made the intentional decision to pursue active transportation as a viable outcome of the road design process.



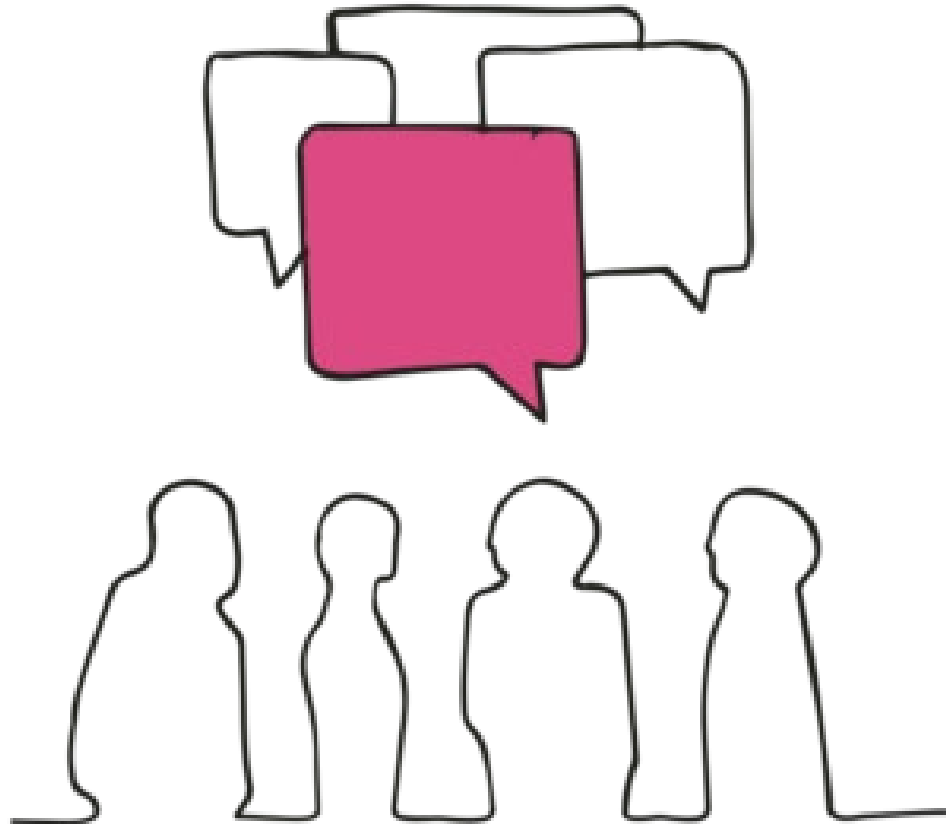






“A small community collective that exists to make walking, biking, and transit the easy choice for everyday transportation.”

# A New Vision IK 2025



sign It - each time confirming what was heard and asking for more detail.

## Vision Alignment

Focused group discussions confirmed major themes and helped to plan alignment with the Strategic Vision.

Strategic Vision Goals fall into the following categories:

- Shared Prosperity
- Connected City
- Inviting Public Places
- Environmental Responsibility
- Safe Community
- Youth Development
- Complete Neighborhoods
- Strength through Diversity
- Economic Vitality
- Governance

an works to achieve the  
IK 2025 vision.

## By the Numbers



520 Meeting  
on the Go  
participants



1056 survey  
respondents



163 online  
engagements



1056 living and  
graffiti wall  
comments



1263 meeting  
participants

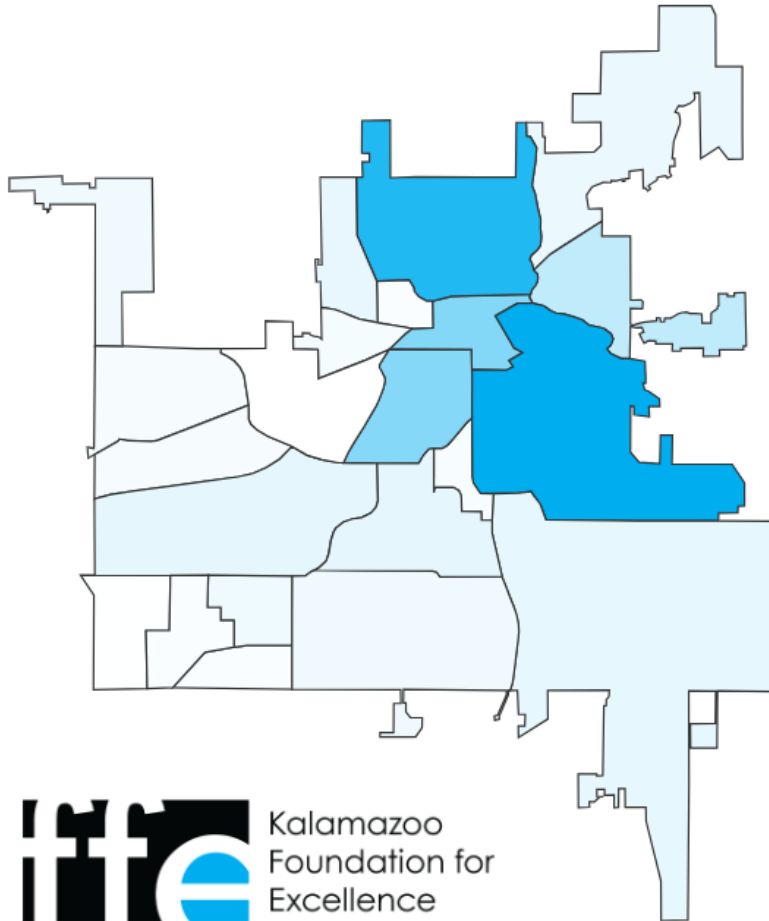
# 4058

 points of contact

# Foundation for Excellence

## Aspirational Projects

Investing in Kalamazoo's neighborhoods

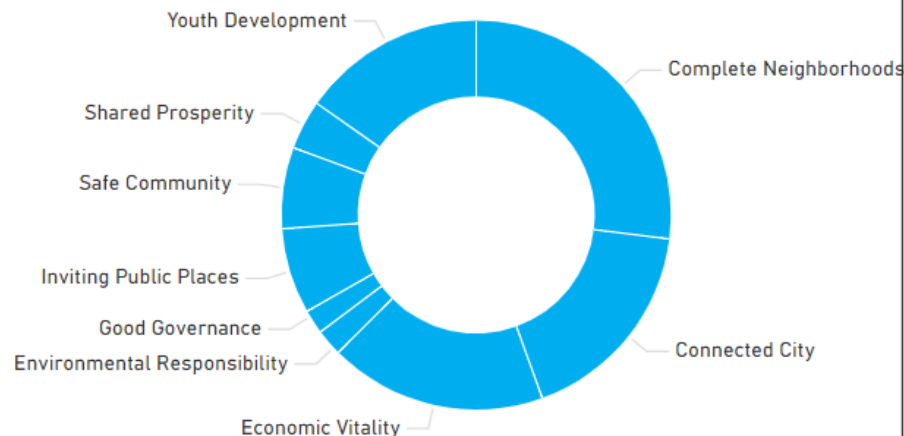
[2017](#)[2018](#)[2019](#)[2020](#)[2021](#)[2022](#)[2023](#)[RESET FILTERS](#)[BACK](#)

Kalamazoo  
Foundation for  
Excellence

TOTAL

\$50.27M

Since 2017, the Foundation for Excellence has invested nearly \$24 million in aspirational projects to realize the vision of Imagine Kalamazoo 2025. Click the neighborhood map to see what investments have been made in each neighborhood and how they align with the goals of Imagine Kalamazoo.



Affordable Housing

\$9,353,899

Complete Neighborhoods

\$3,181,331

Economic Development

\$8,245,688

Environmental Responsibility

\$212,003

Good Governance

\$5,200

Infrastructure

\$14,273,135

Inviting Downtown

\$265,000

Neighborhood Activation

\$764,269

Park Enhancements

# Plans can come true...

## Kalamazoo is ditching most of its one-way streets – back to the way they used to be

Updated: Feb. 14, 2023, 9:16 a.m. | Published: Feb. 14, 2023, 7:30 a.m.

KALAMAZOO

## Downtown Kalamazoo street conversion begins with \$1.9M Michikal project

Updated: May. 1, 2023, 10:16 a.m.



Kalamazoo



Preliminary

## \$5.9M grant will help transform Kalamazoo's downtown street network

Updated: Aug. 09, 2022, 10:16 a.m.



## \$12M grant bolsters Kalamazoo's street redesign as two-way conversion begins

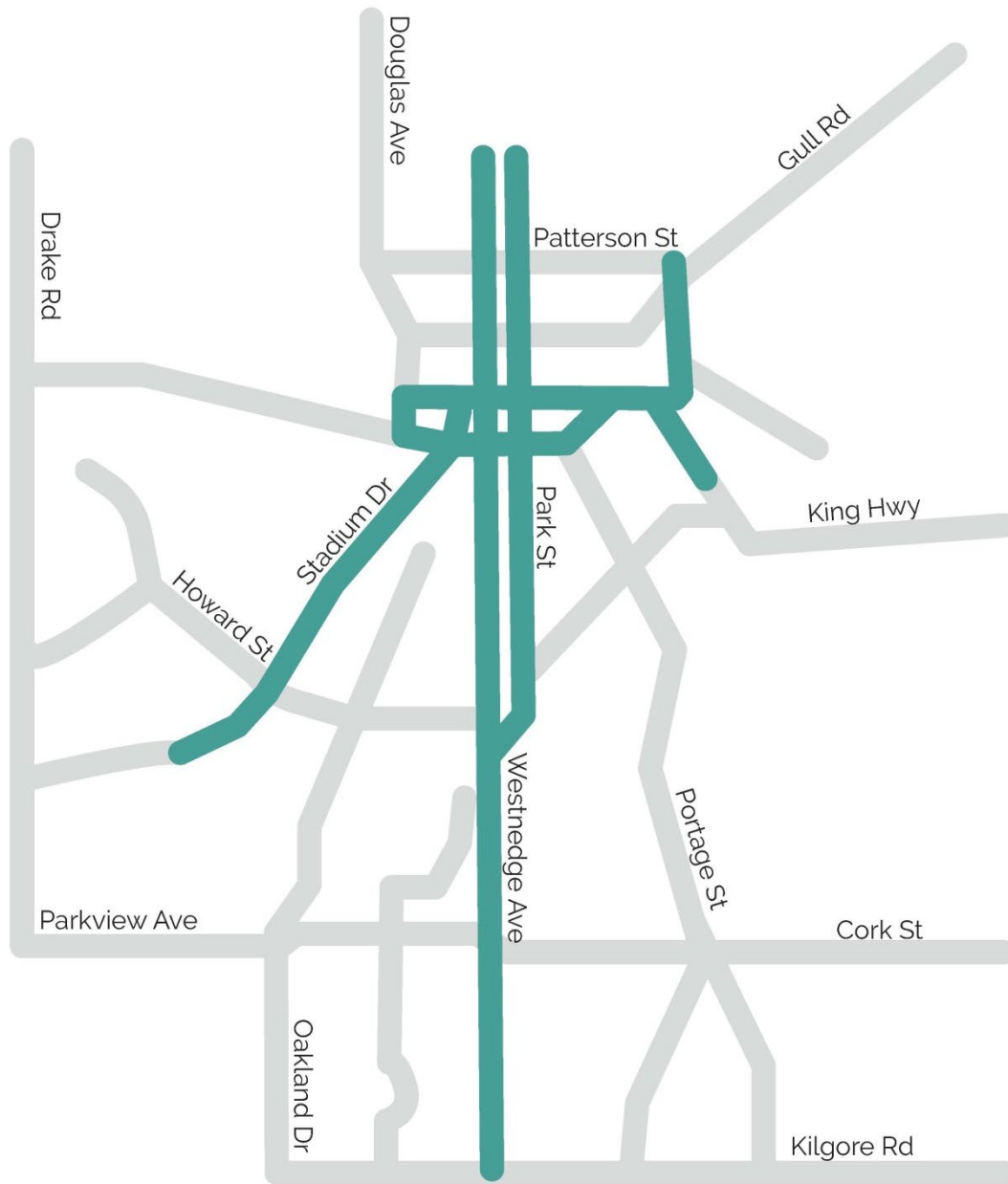
Updated: Jun. 04, 2024, 8:18 a.m. | Published: Jun. 04, 2024, 8:16 a.m.



Advertisement







 MDOT Streets for Transfer

# Network Strategies

Utilizing all of our streets for  
**ALL of our users.**

- MDOT street transfer
- Expanding non-motorized
- Local street paving crew



Consistent Annual Investments in infrastructure improvements:

- Sidewalks
- Bike Lanes
- Bus Stops
- Traffic Calming interventions
- Pilot projects to improve bike/pedestrian connections



## ACTION

### Improve the Neighborhood Connectivity

Implement Buffered Bike Lanes Along Westnedge and Park

Install Bike Lanes on Vine and Lovell

Install a Protected Bike Lane or Shared Use Path on Howard

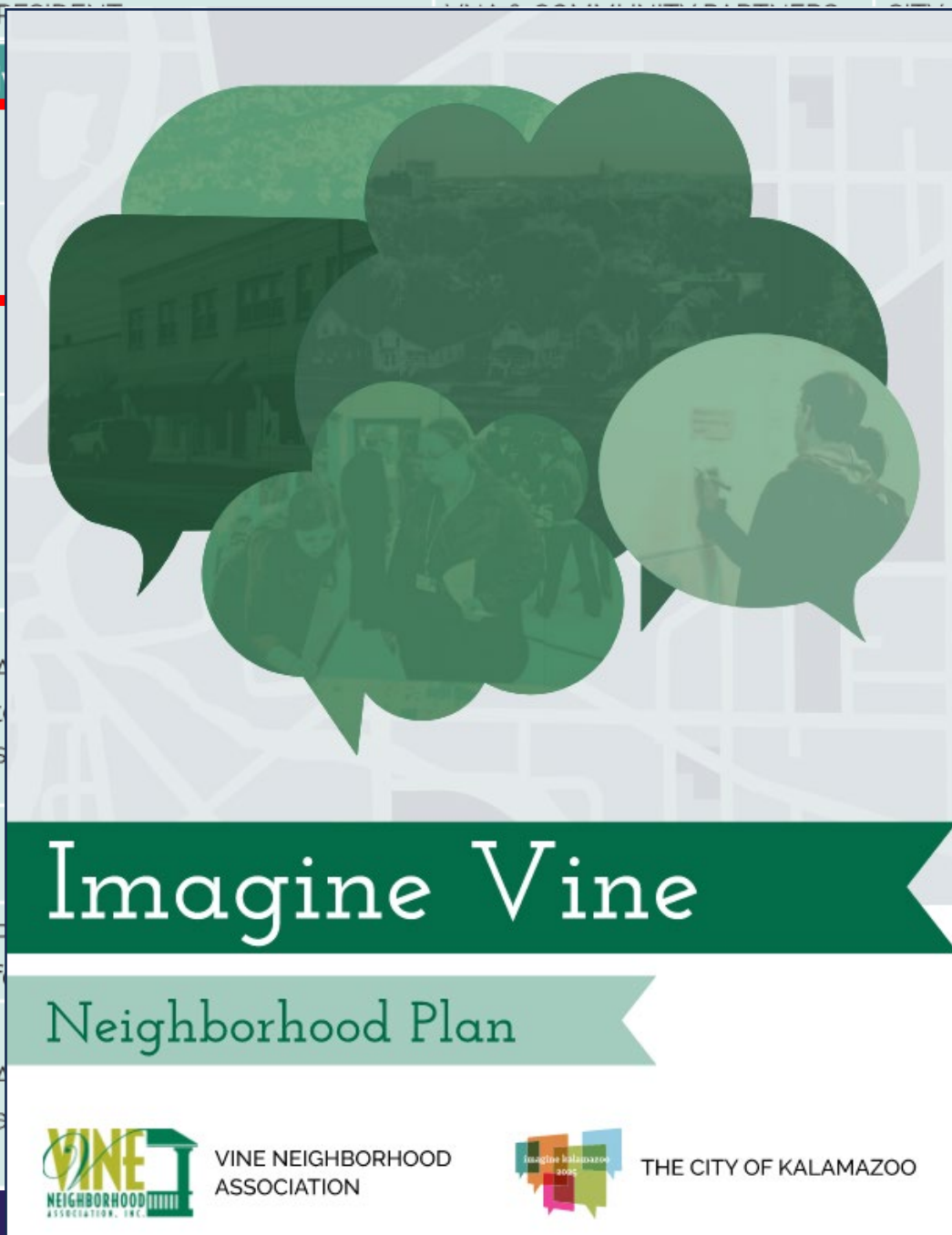
Install Branded Wayfinding Dignage Directing to Downtown, the Farmer's Market, Vine Corners, and Campus. Install Bike route signs on Forest, Merrill, Davis, and Wheaton

Improve Bus Stops to Include Seating, Lighting, Shelters Where Possible, and Signage With Route Information

Research Route, Transfer, and Frequency Improvements to the Bus System

Install Bike Racks in Commercial Areas

Incorporate Bicycle Education into Projects, Do More Bicycle Education for Cyclists and Motorists



The graphic features a stylized map of the Vine neighborhood in the background. Overlaid on the map are several green speech bubbles of various sizes. The bubbles contain images of people: some are walking, some are sitting on a bench, and one is holding a sign. Below the map, there is a dark green banner with the text "Imagine Vine" in white. Underneath that is a light green banner with the text "Neighborhood Plan" in dark green. At the bottom of the graphic, there are two logos: the "VINE NEIGHBORHOOD ASSOCIATION" logo on the left and the "THE CITY OF KALAMAZOO" logo on the right.

## TIMELINE COSTS

all buffered bike lanes Mid \$\$

nt bike lanes Short \$

all the best option for safe  
ling on Howard Long \$\$

vide technical assistance  
right of acquisition Mid \$

upport ADA bus stop  
rovement Mid \$\$

Long \$\$

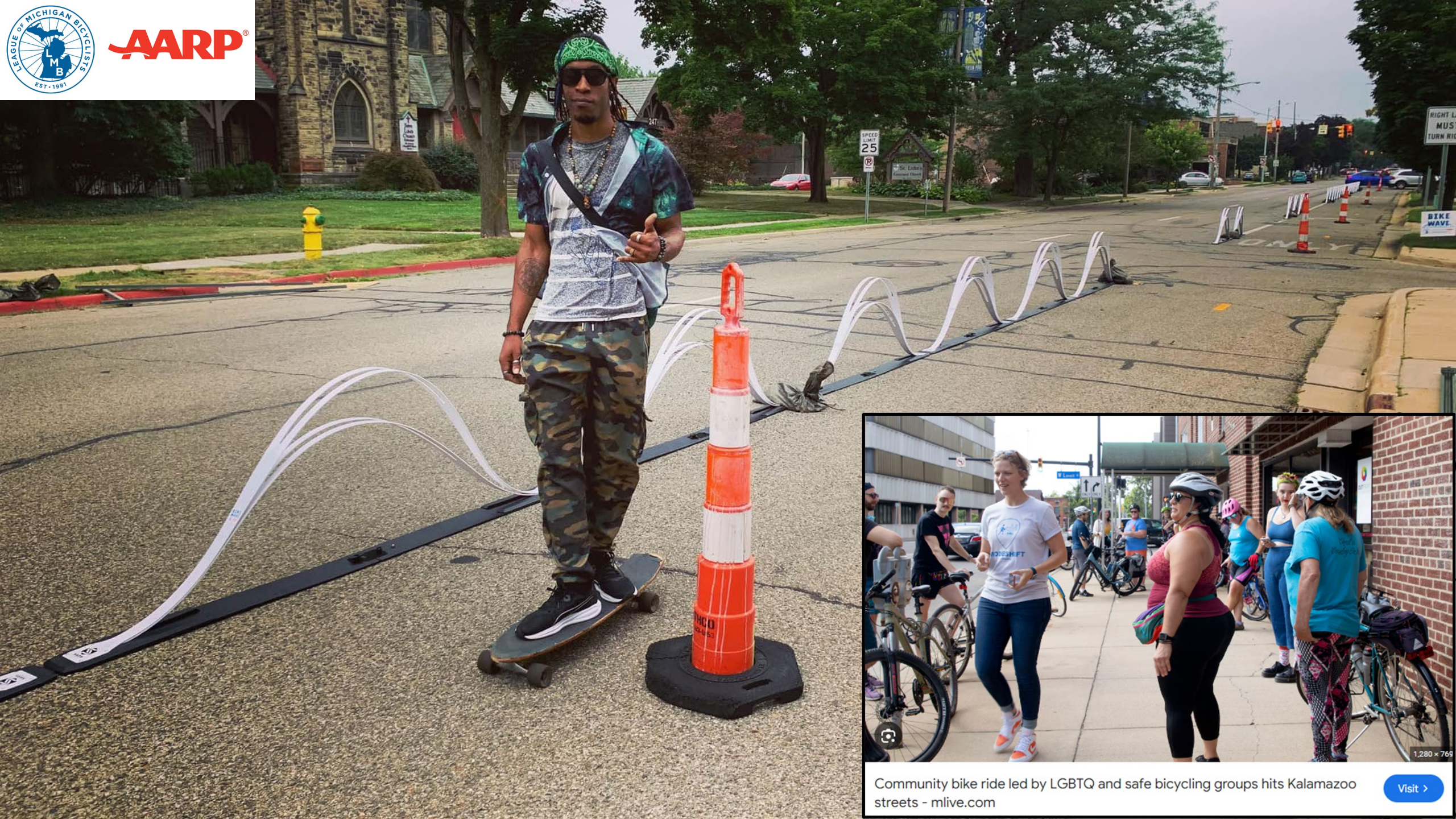
ist in siting and right of  
y acquisition Short \$

upport event Short \$





**AARP**



Community bike ride led by LGBTQ and safe bicycling groups hits Kalamazoo streets - [mlive.com](https://mlive.com)

Visit >



This project is supported by the Imagine Vine Neighborhood Plan, which prioritized neighborhood connectivity and specifically called for adding bike facilities on Lovell Street.

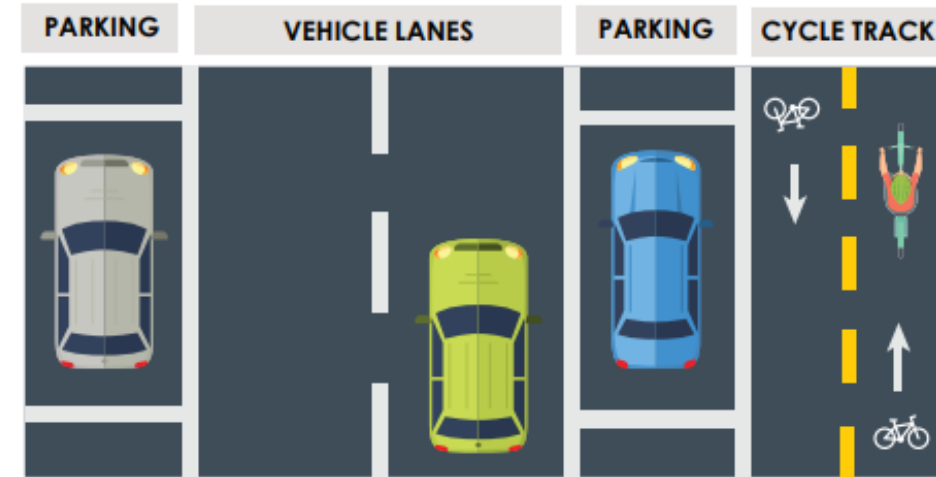
The cycle track will be marked with paint and sections of a Qwik Kurb product consisting of a hard plastic curb with reflective posts. The cycle track will be marked in bright green through intersections.

The Cycle Track will be marked with plastic curb, reflective posts, and paint.

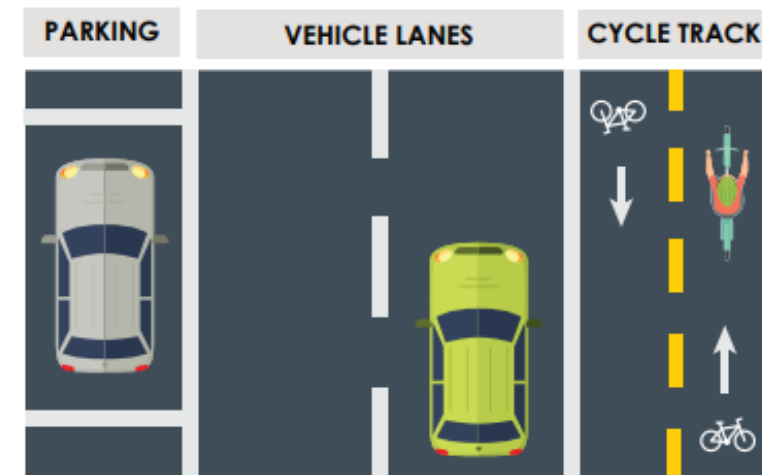


Source: Qwick Kurb

### Pitcher St to Westnedge Ave



### Westnedge Ave to Oakland Dr



# Increasing A Variety Of Housing Types Near The Neighborhood Core



- Senior housing
- Accessible housing partnerships
- Multi-family
  - Smaller and urban centered – 4 to 12 unit
- Single family (attached and detached)
  - Duplex, triplex, row houses





# What's Next... into 2035...

**Welcoming and Accessible partner engagement projects:**

- **Discover Kalamazoo**
  - **Accessible Traveler Grant**
- **Disability Network**
  - **Advisory Staff**
- **Metro Transit**
  - **Accessible Bus Stop Investments**
  - **Over 8 years of investments and improvements**
- **Outfront & NAACP organizations**
  - **Welcoming and belonging in Kalamazoo**