



Department of County Administration

ELLICOTT CITY RESPONSE AND RECOVERY FRAMEWORK



Emergency Response

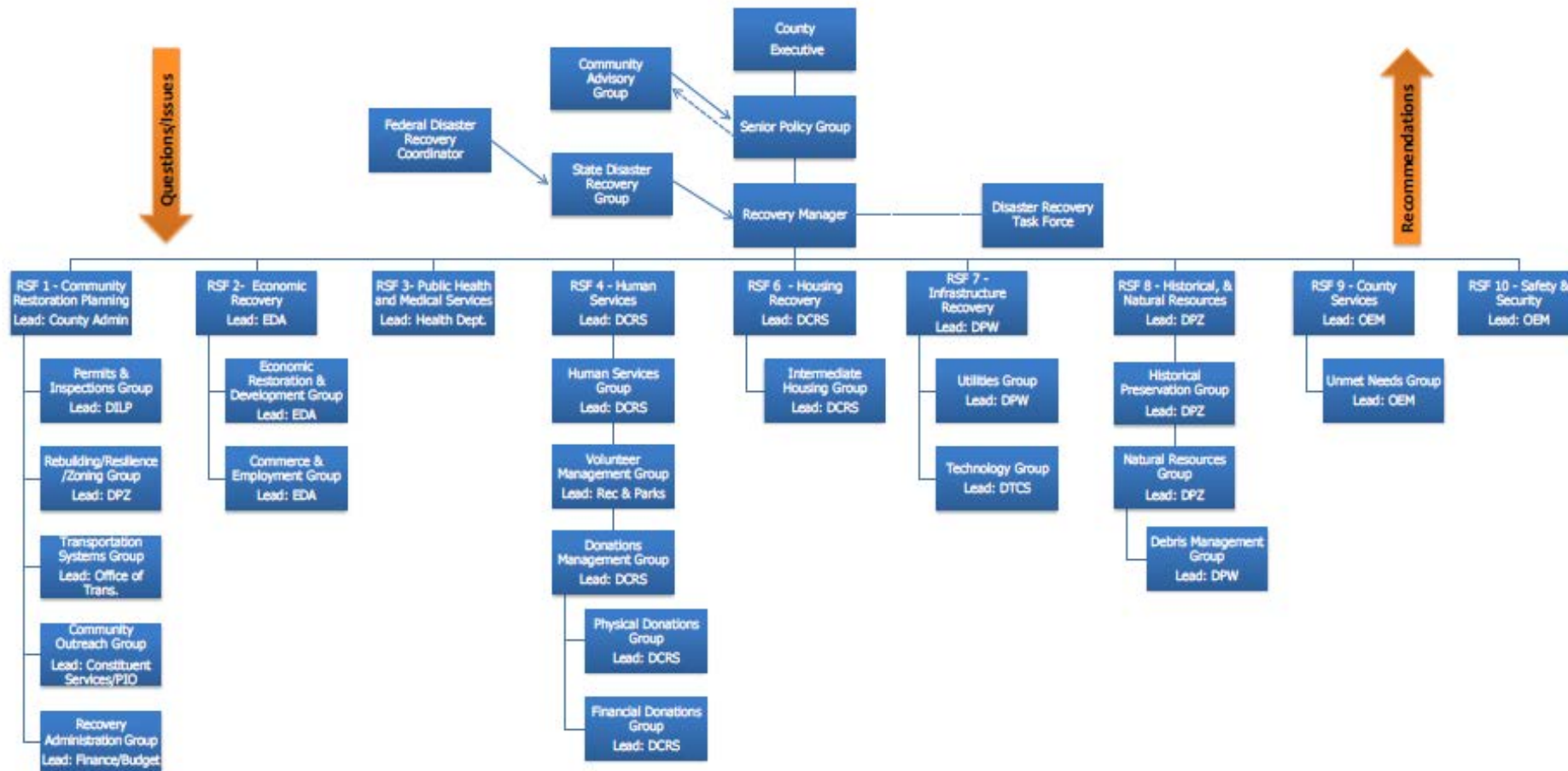
- 6+ inches of rain in 2 hours
- Back building Thunderstorm
- From 7pm to 1am on 7-30-16, the Howard County dispatch center handled 1,043 emergency calls.
 - That is 4 times the normal call volume.
- Majority of them were water rescues
- 2 lives were tragically lost that evening, and one was lost during the recovery efforts





Recovery Structure

Short Term/Intermediate Recovery Organization



Short-Term Recovery- Day 2 through Month 1

- Rebuilding: Rebuild Historic Ellicott City with an emphasis on resilient infrastructure through flood mitigation
- Temporary work over permanent work



rECovery

REBUILDING ELLICOTT CITY:
A RESILIENT COMMUNITY
www.ECfloodrecovery.org



HEALING: Foster the healing process for community members through the access of a wide range of social and financial resources.



STABILITY: Find immediate and long-term housing solutions for residents displaced by the flooding.



ECONOMY: Expedite business recovery and restore long-term economic growth.



REBUILDING: Rebuild Historic Ellicott City with an emphasis on resilient infrastructure through flood mitigation.



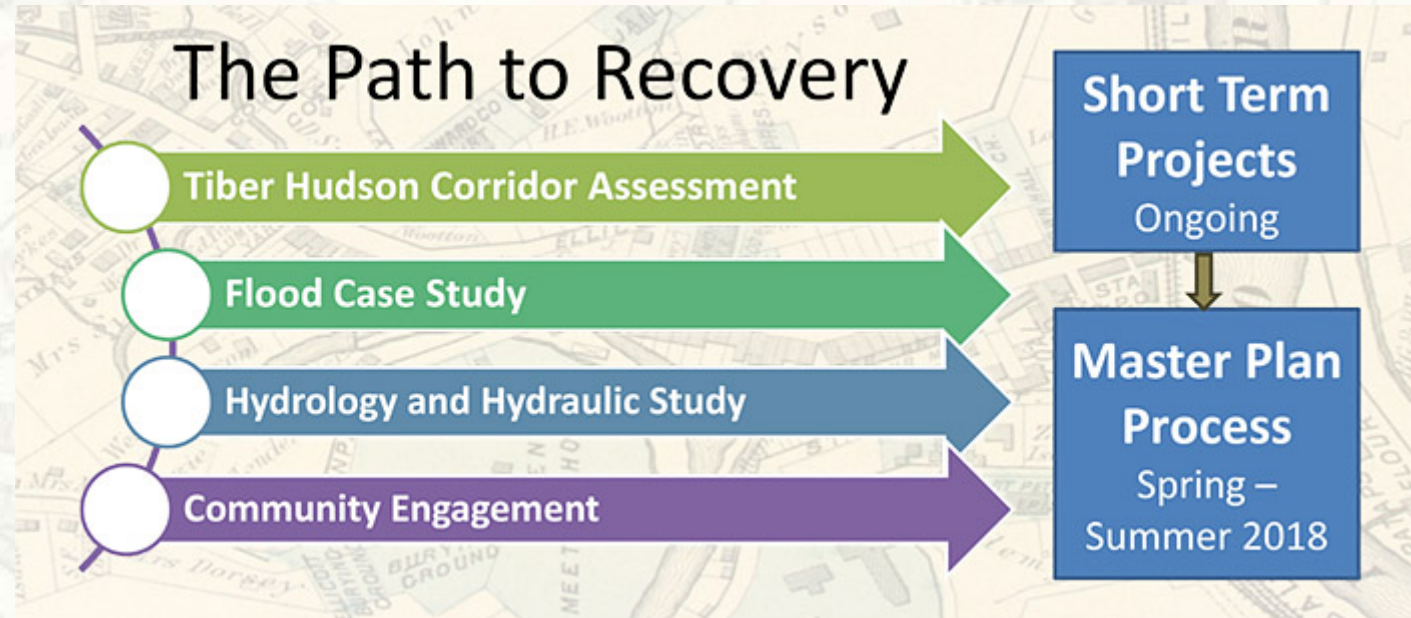
PRESERVATION: Preserve Historic Ellicott City's unique and cherished architectural characteristics that have always attracted visitors.



ENVIRONMENT: Pursue and implement projects that ensure the continued vitality of our natural resources in pursuit of a sustainable quality of life.

Intermediate Recovery

- Develop Strategy
- Held Community Meetings
- Continued CAG
- Studies Underway
- Website Development
- Public Assistance Kickoff/Meetings



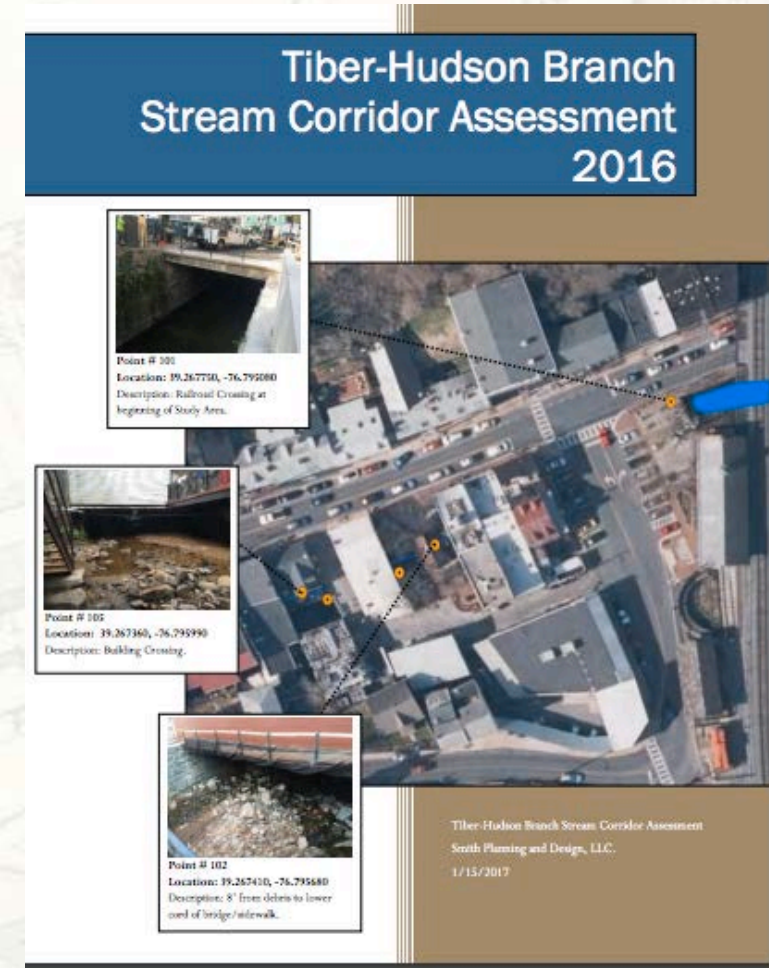
Intermediate-Long Term- Months 5 through 8

- Slow waiting process
- CAG Final Report
- Recovery Manager phased out
- Transition OEM to more of a coordination role
- Millworks Opened (One-stop Shop)

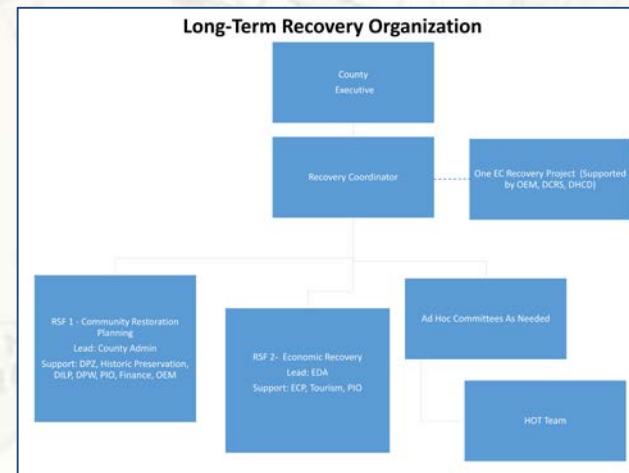
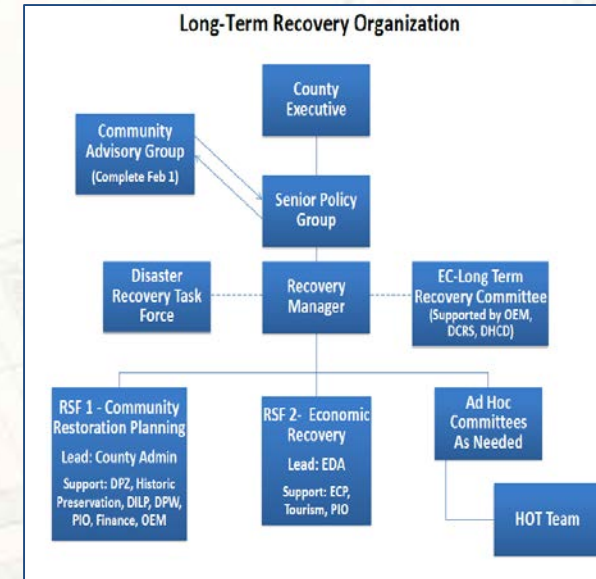
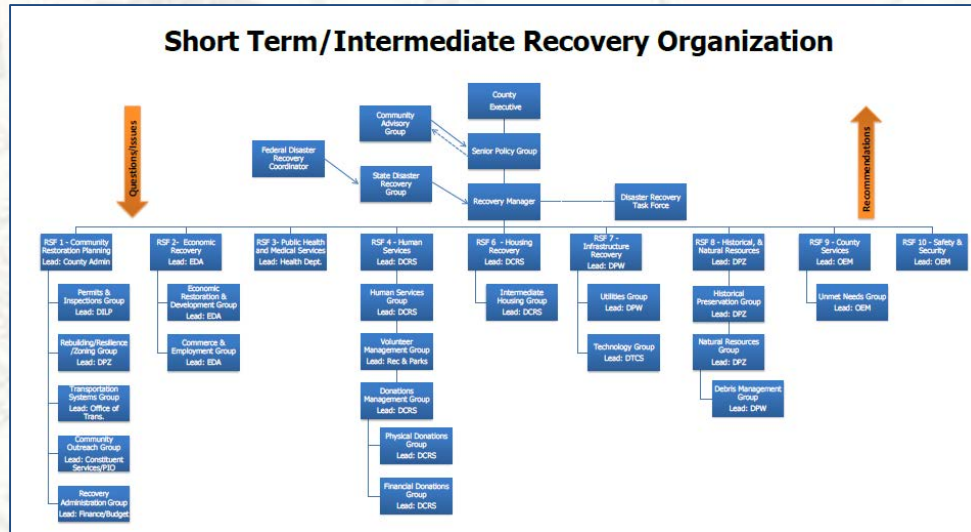


Long-Term Recovery- Month 8 to Today

- Recovery meetings scaled back
- OneEC Recovery Project
- Master Plan Process
 - Tiber Hudson Corridor Assessment and Flood Case Study
 - Hydrology and Hydraulic Study
 - USACE Non-Structural Floodproofing Study
- Old EC Flood Commemoration



Recovery Transition



Progress to Date

- 17 new businesses have opened with 9 on the way
- Over \$10.8 million in infrastructure improvement projects have been completed
- Rebuilding is still underway for some properties and businesses



Businesses have reopened on Main Street



Grant funds distributed to date



Displaced households have returned



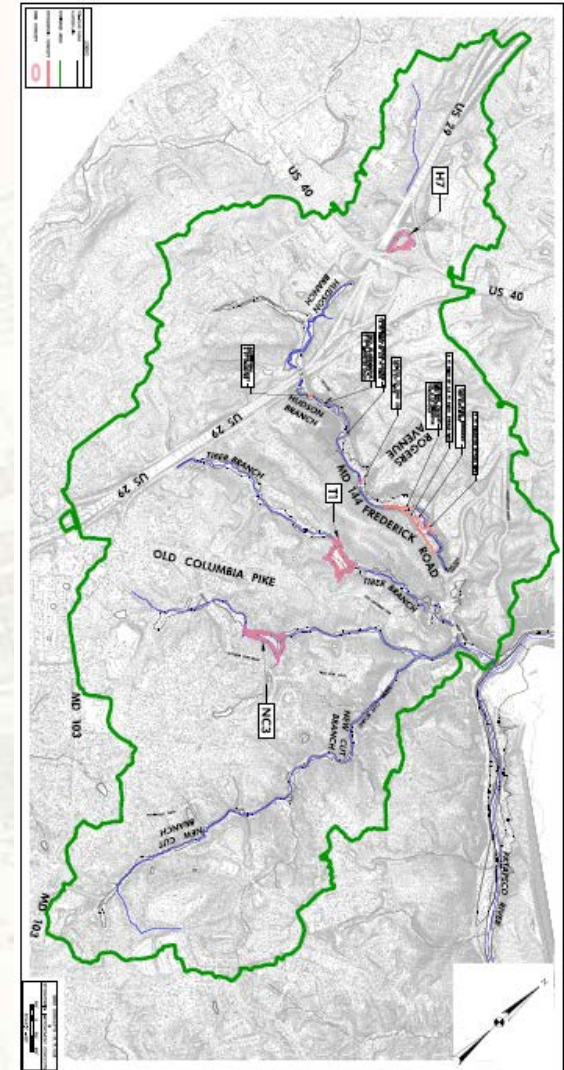
Progress to Date

- Examples of some of the infrastructure improvement projects



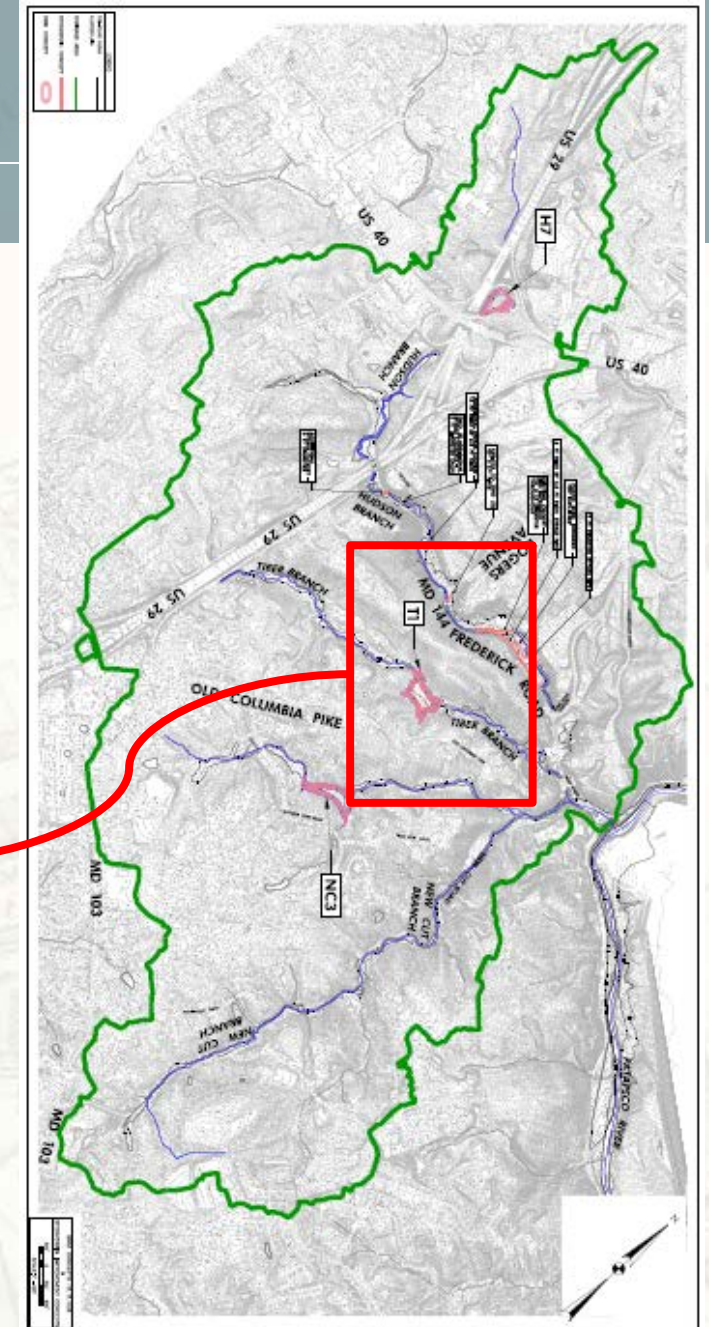
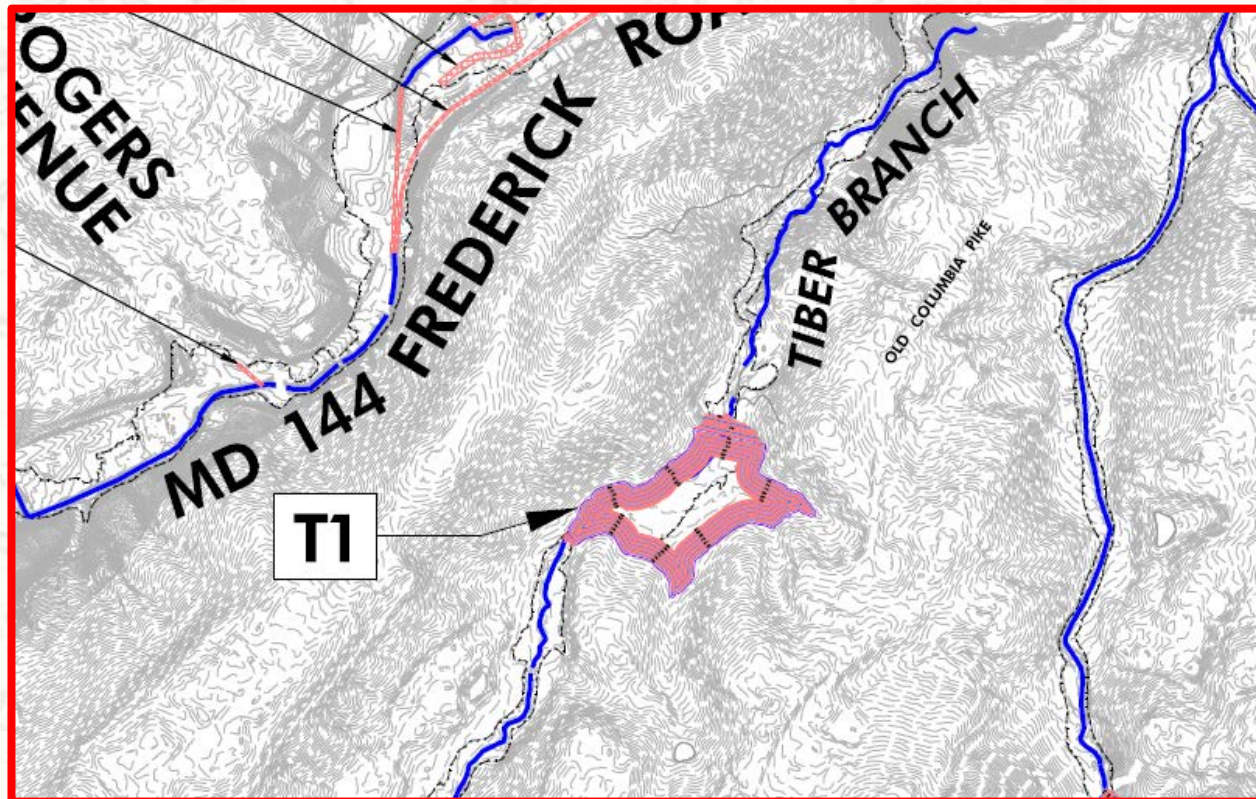
Progress to Date

- Four major flood mitigation projects announced



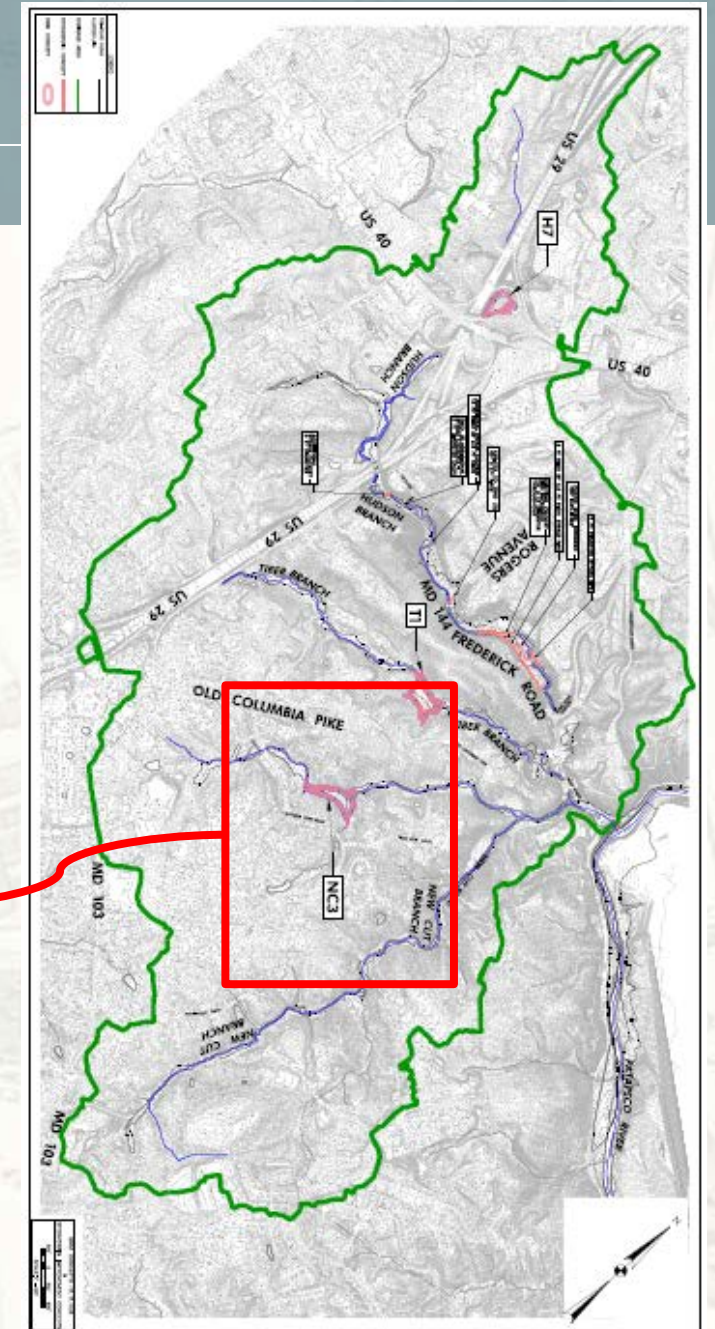
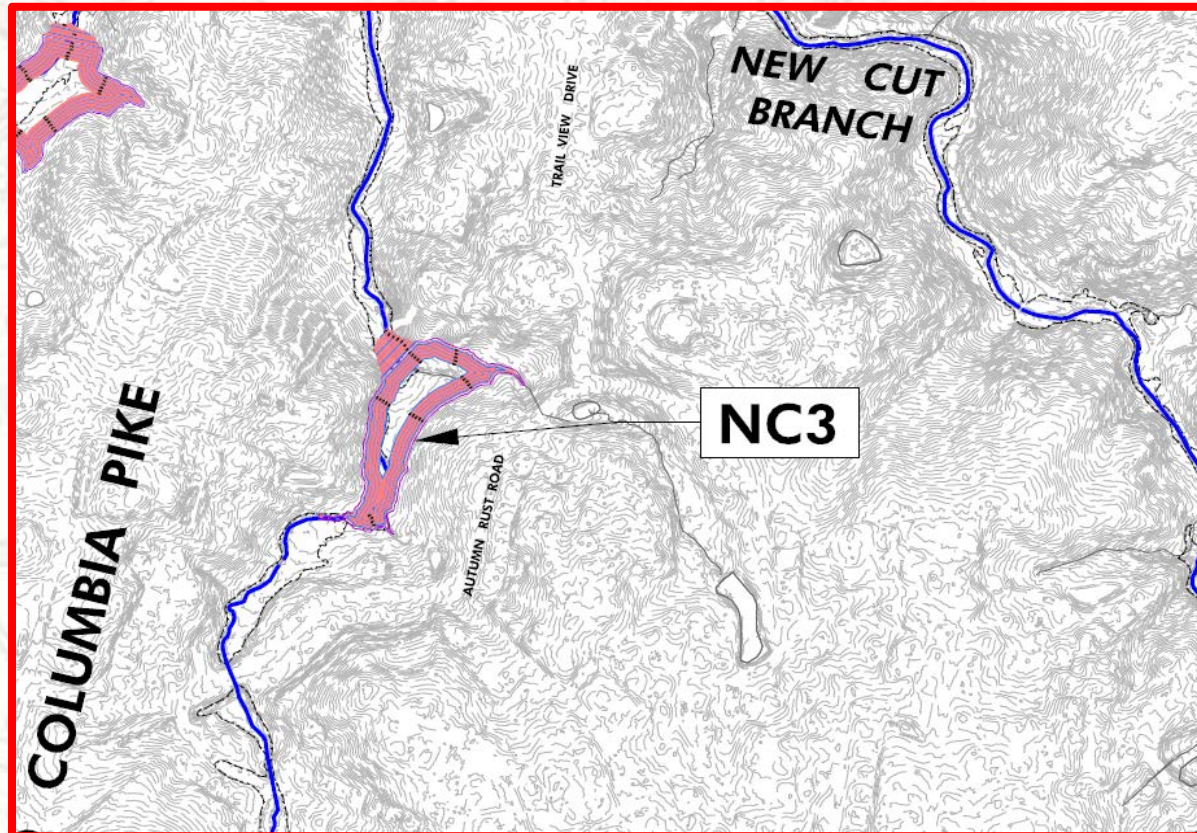
Progress to Date

1. Tiber Branch Retention Facility (\$4.2M)



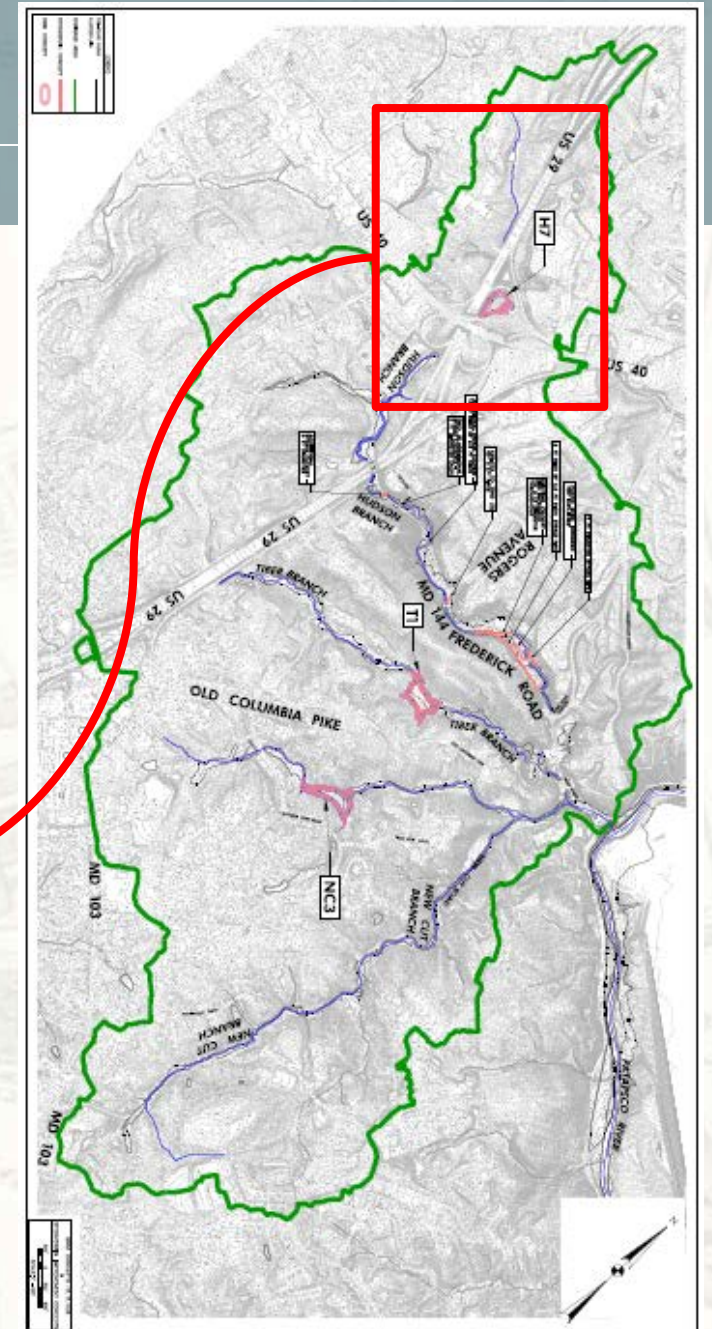
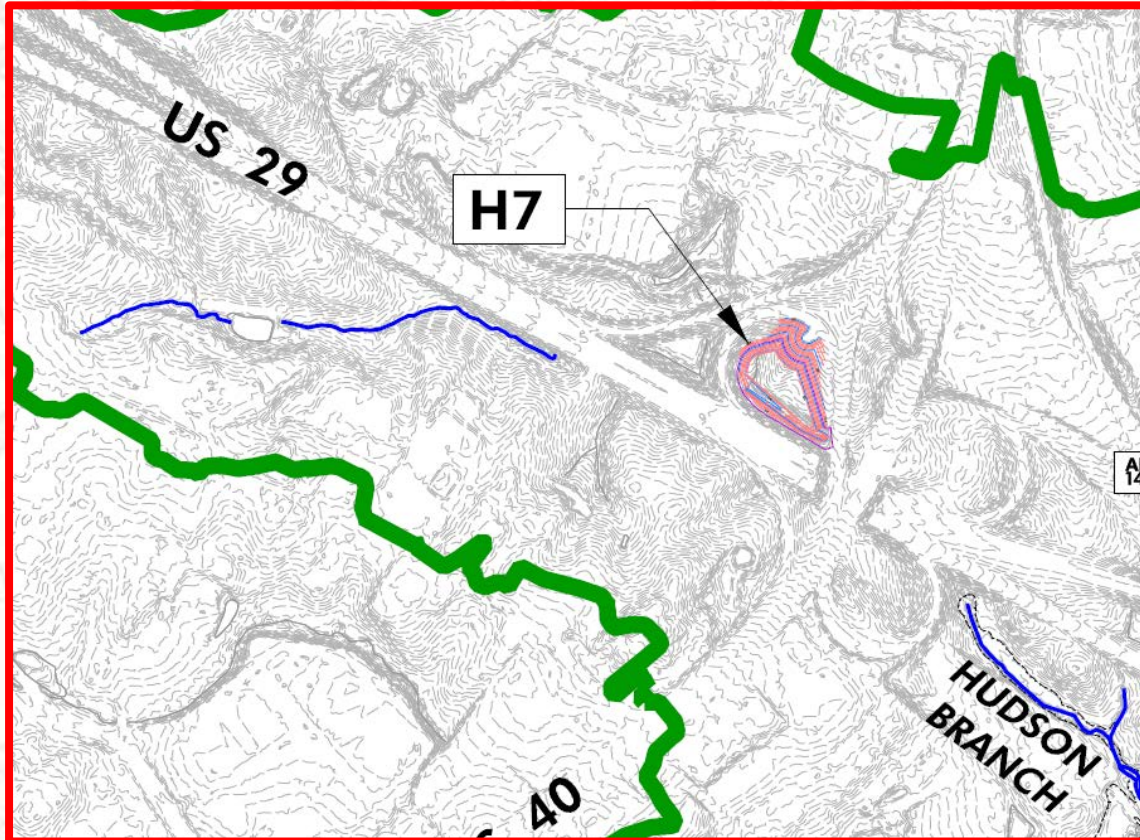
Progress to Date

2. New Cut Branch Retention Facility (\$3.6M)



Progress to Date

3. Hudson Branch Retention Facility (\$5.1M)





Elicott City Watershed Master Plan

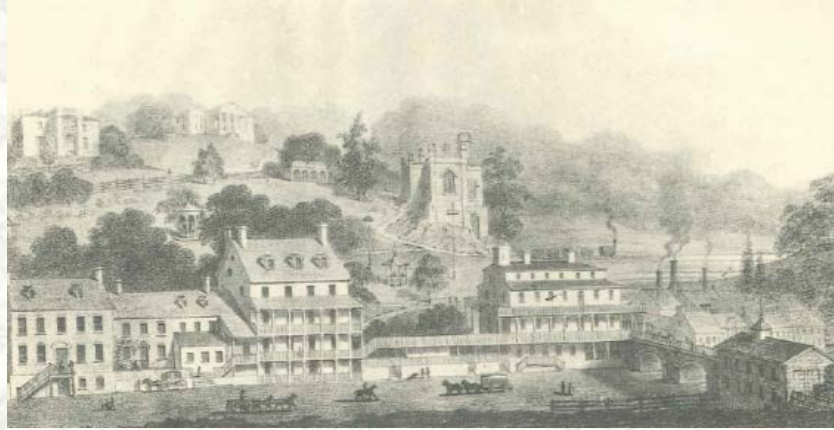
Presentation to Maryland Sustainable Growth Commission
November 13, 2017

Additional Updates Regarding:
PlanHoward Academy
Zoning Code Assessment

Howard County Department of Planning and Zoning

Many layers of Elicott City history

Mill Town



River Town



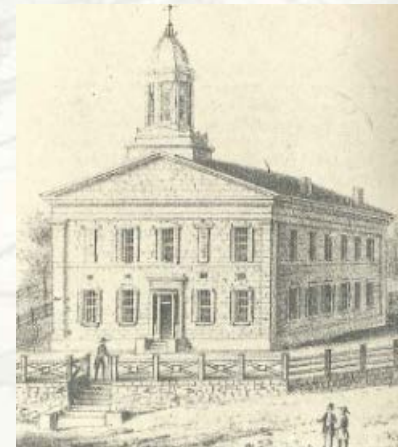
Baltimore & Ohio Stop



Civil War Post

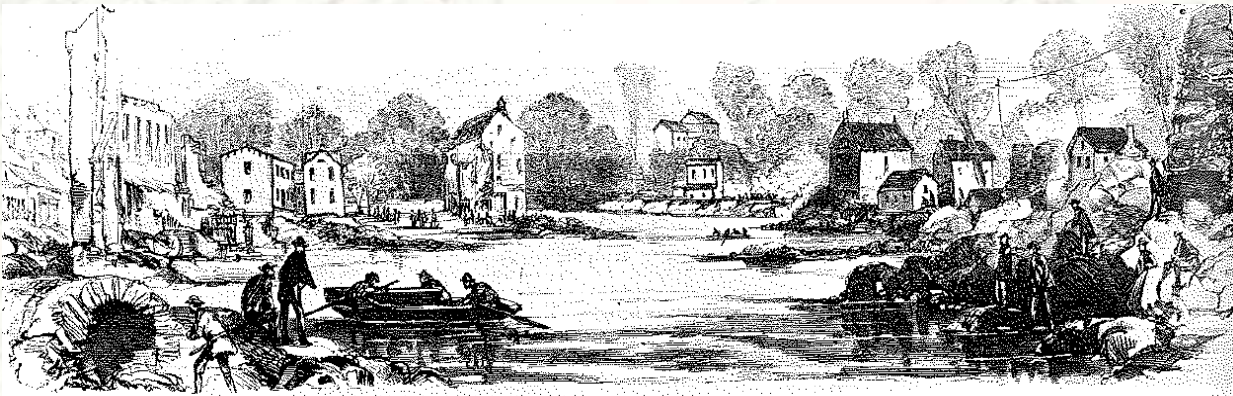


County Seat



A history of flooding

Flood of 1868



Agnes: 1972



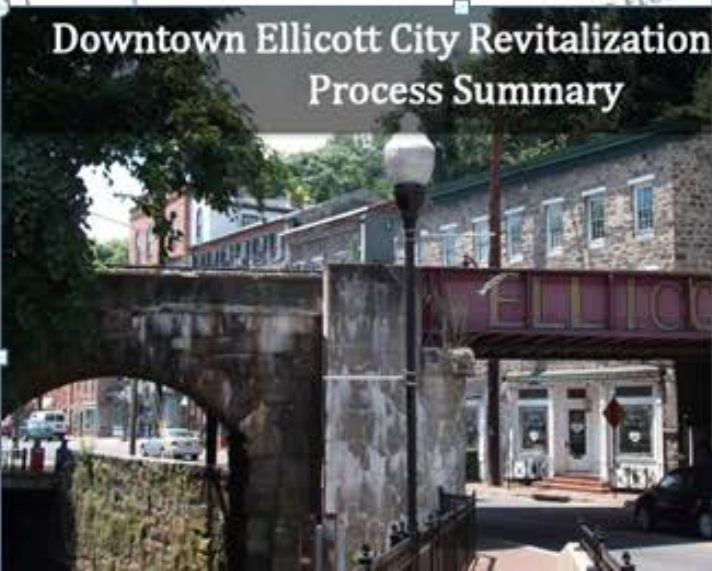
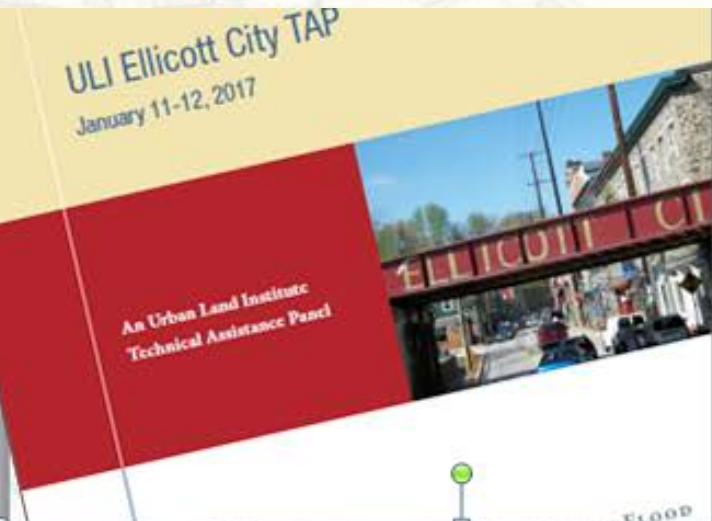
Lee: 2011



Past Floods in Ellicott City (1768-2011)

- 1768
- 1817
- 1837
- **1868** – 43 people died; destroyed 14 homes
- 1901
- 1917
- 1923
- 1942
- 1952
- **1972** – Hurricane Agnes
- 1975
- 1989
- **2011** – Tropical Storm Lee

Connecting Past Initiatives



rECovery Community Meeting #4 Rebuilding and Historic Preservation Final Report

December 10, 2016

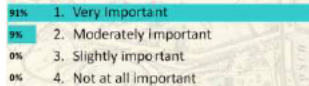
Table facilitation during the meeting

On December 10th, residents, community members, and stakeholders of the Greater Ellicott City area met at Roger Carter Community Center to: engage in community dialogue, learn from a presentation by an expert from the City of Annapolis, and share ideas for rebuilding a stronger and more resilient Ellicott City. This meeting was the last in a series of four. The meetings all focused on rebuilding with an emphasis on resilient infrastructure and flood mitigation. This meeting had a special additional focus on historic preservation.

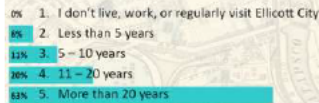
Throughout the evening, participants were able to share their thoughts and feelings on the recovery process and learn about the County's response and the process moving forward. Participants engaged in facilitated group discussions and used keypad polling to provide instant feedback.

Polling Results:

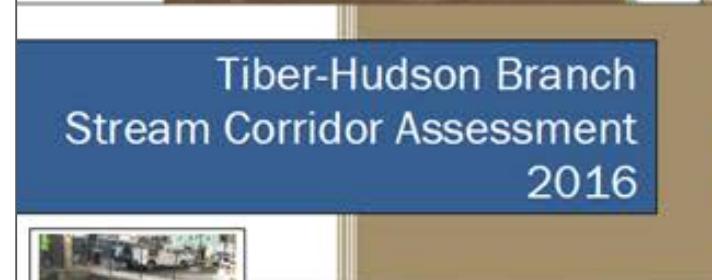
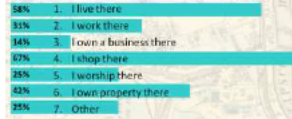
How important is it to you to rebuild Old Ellicott City?



How long have you lived, worked or regularly visited (shopped, dined, worshiped) in Ellicott City?



What is your relationship to Ellicott City? (press all that apply)



Point # 001
Location: 39.267750, -76.791000
Description: Railroad Crossing at beginning of study area.



Studies and Plans Prior to 2016 Flood ^

- [Flood Working Group report, 2015](#)
- [Main Street Maryland Application, 2014](#)
- [Flood study, 2013](#)
- [Downtown Ellicott City Revitalization Initiative Process Summary, 2013](#)
- [Tiber Hudson Subwatershed Restoration Plan, 2013](#)
- [Sustainable Community Application, 2012](#)
- [Versar's Concept Plan for Old Ellicott City LID Project, 2012](#)
- [Downtown Ellicott City Parking Study, 2009](#)
- [Improvements to Patapsco River Open Space - Concept Design, 2005](#)
- [Ellicott City Plan, 2003](#)
- [Ellicott City Improvements: Recommendations, 1988](#)
- [Ellicott City Master Plan, 1981](#)
- [Ellicott City: New Life for an Old Town, 1977](#)

Efforts Since 2016 Flood ^

- [Ellicott City "Progress To Date"](#)
- [Four major flood mitigation projects announced](#)
- [Hydrology and Hydraulics Study](#)
 - [Appendix A1, A2, A3, A4](#)
 - [Appendix B](#)
 - [Appendix C](#)
 - [Appendix D](#)
 - [Appendix E](#)
- [ECstrong.org](#)
- [Meeting Summaries](#)
- [Project Idea Themes](#)
- [Current studies underway](#)
- [Economic Impact of the 2016 Ellicott City Flood](#)
- [Story map](#)
- [Master plan press release](#)
- [Community Advisory Group Final Report](#)
- [ULI Ellicott City TAP Report](#)

Framing the Master Plan

The Master Planning Process is:

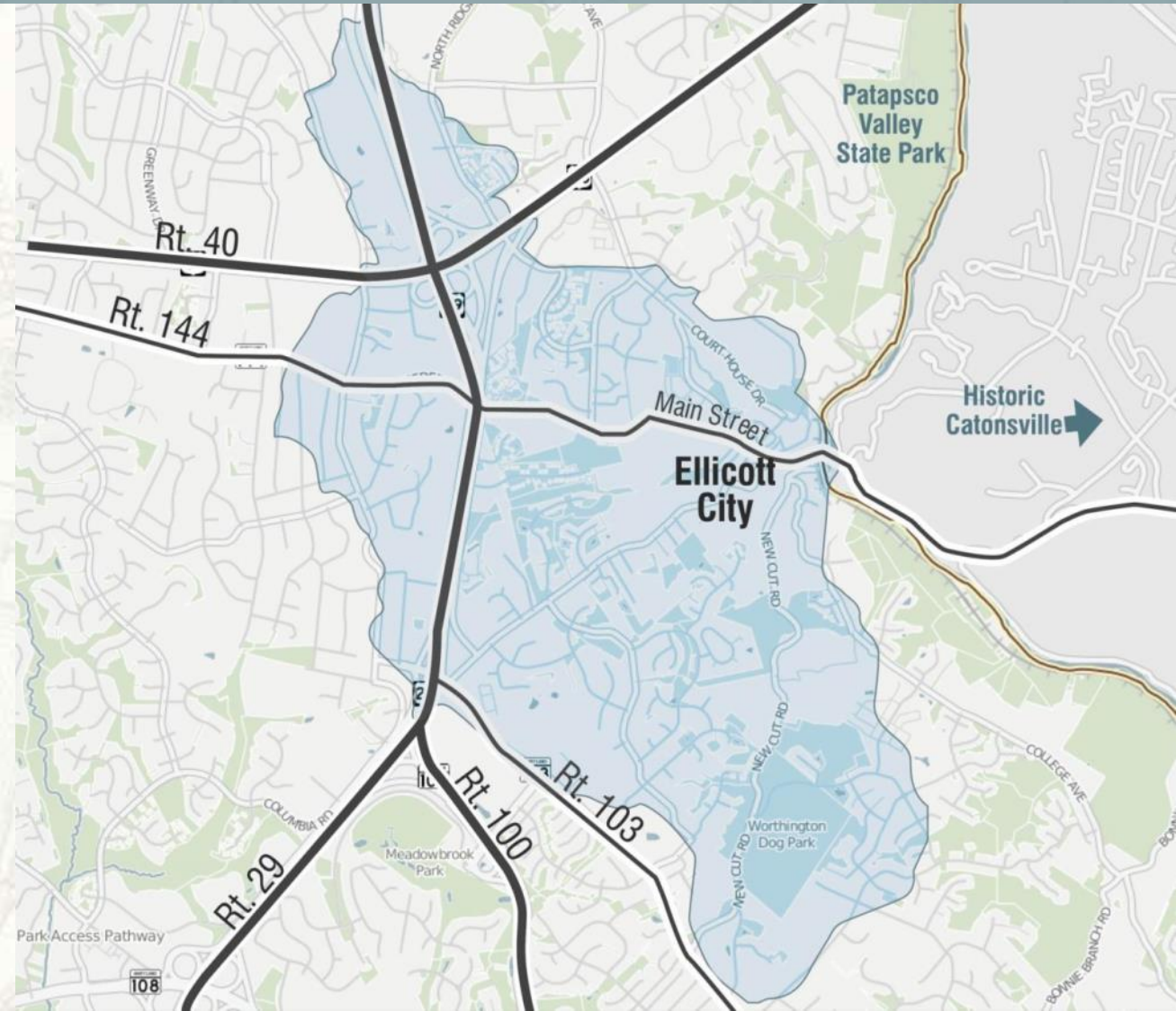
1. *An On-Going Process*
2. *Building Upon Efforts to Date*
3. *Seizing the Opportunity to Make Ellicott City Better*
4. *Focused on Implementation – Balancing Short and Long-Term Goals*
5. *Developing a “Game Plan”- Using the H&H Study (and other studies) as a Tool*

Framing the Master Plan

Scope: Integrated Approach to Building Resiliency and Reducing Risk over the Long-Term

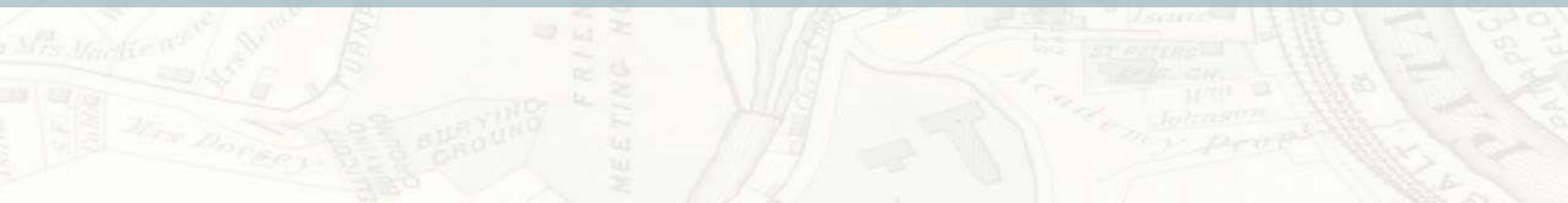
- Physical Planning | Land Use | Zoning
- Urban Design | Placemaking | Parks
- Transportation | Parking
- Infrastructure Improvements | Stormwater Management
- Economic Development | Community Marketing
- Funding Strategies | Implementation

Informed by CAG, Hydrology and Hydraulic Study (H&H), and other plans/studies

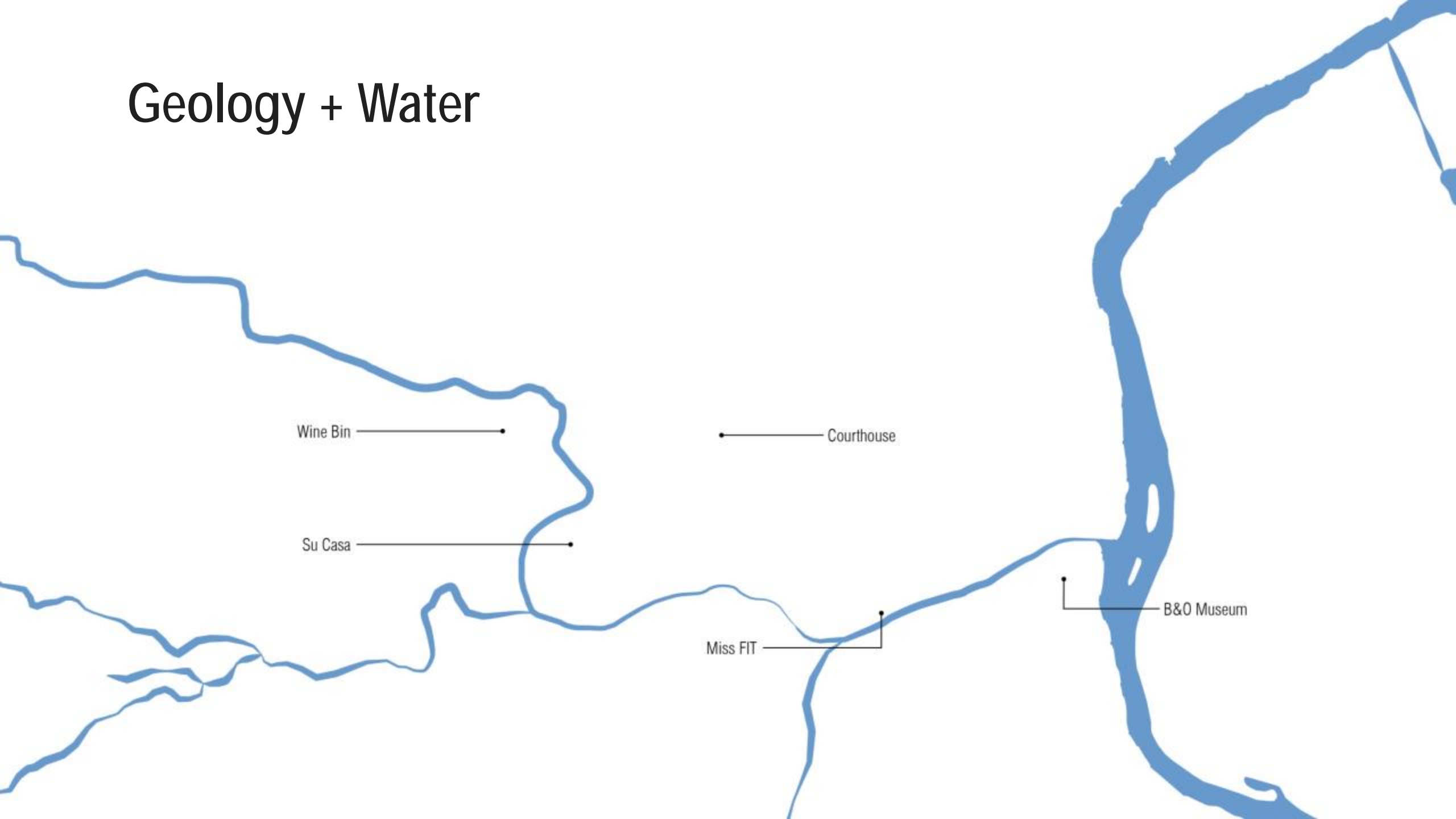




OVERALL STRATEGY



Geology + Water



Wine Bin

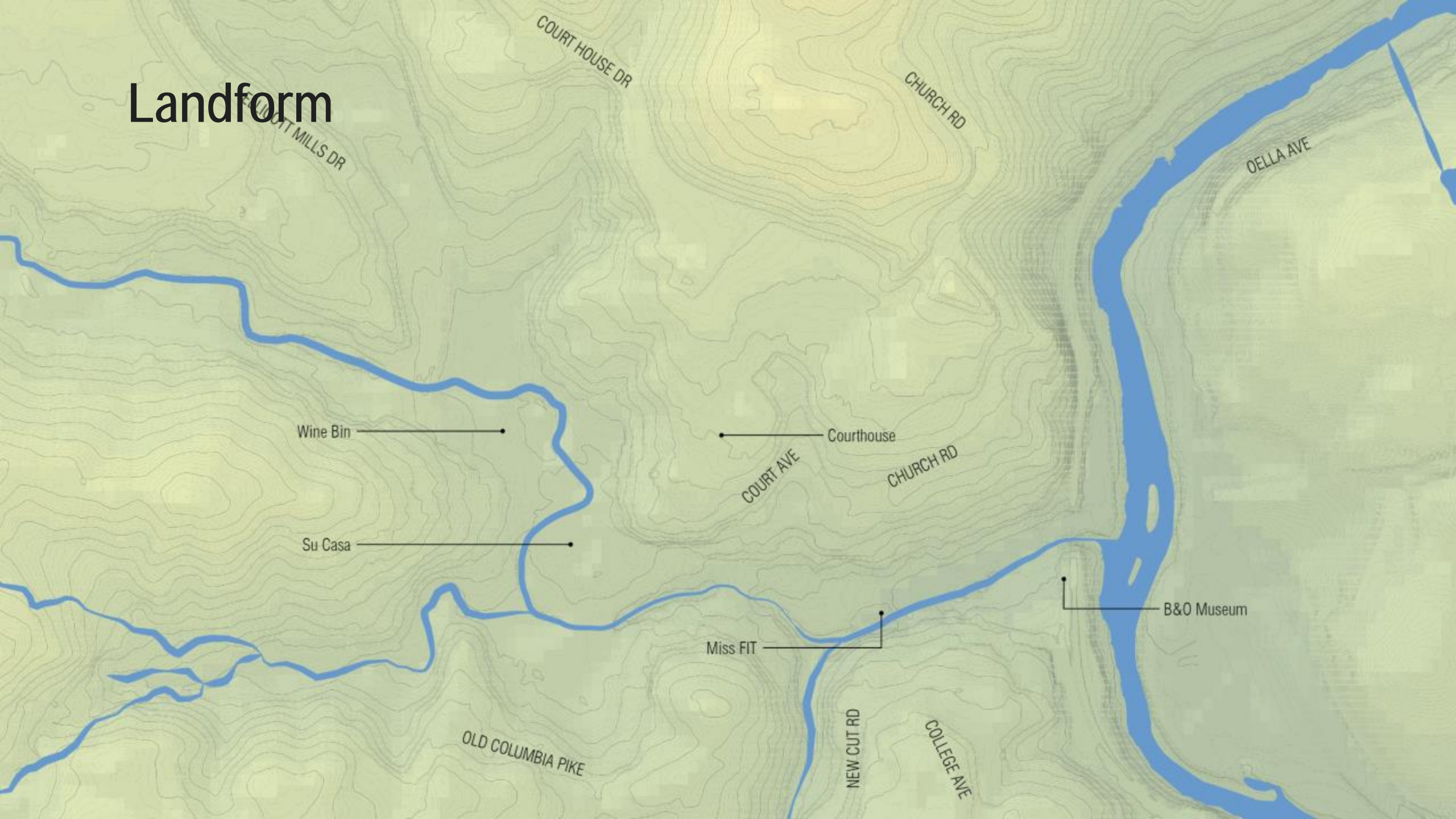
Courthouse

Su Casa

Miss FIT

B&O Museum

Landform



SUZUKI MILLS DR

COURT HOUSE DR

CHURCH RD

OELLA AVE

Wine Bin

Courthouse

COURT AVE

CHURCH RD

Su Casa

Miss FIT

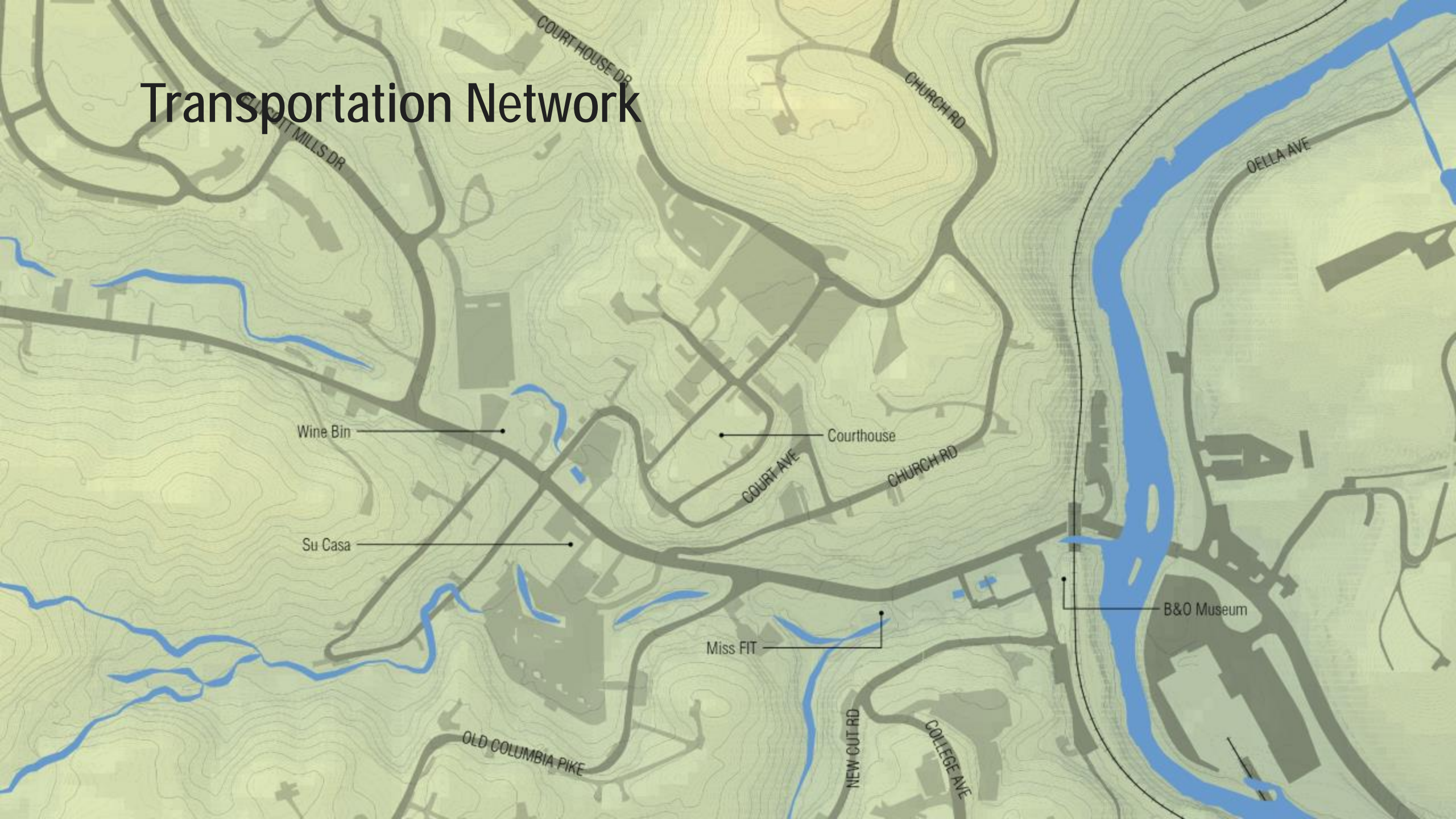
B&O Museum

OLD COLUMBIA PIKE

NEW CUT RD

COLLEGE AVE

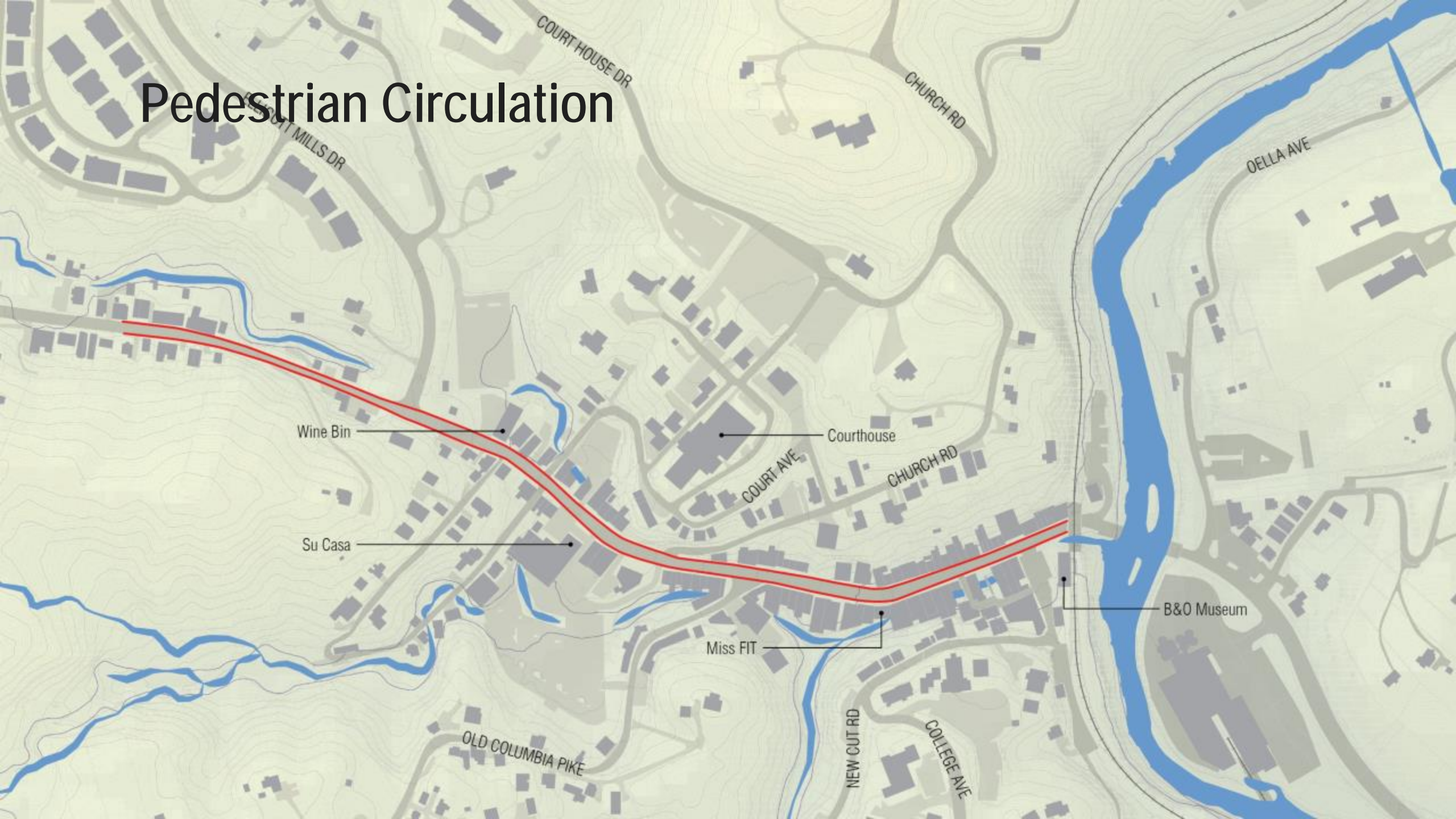
Transportation Network



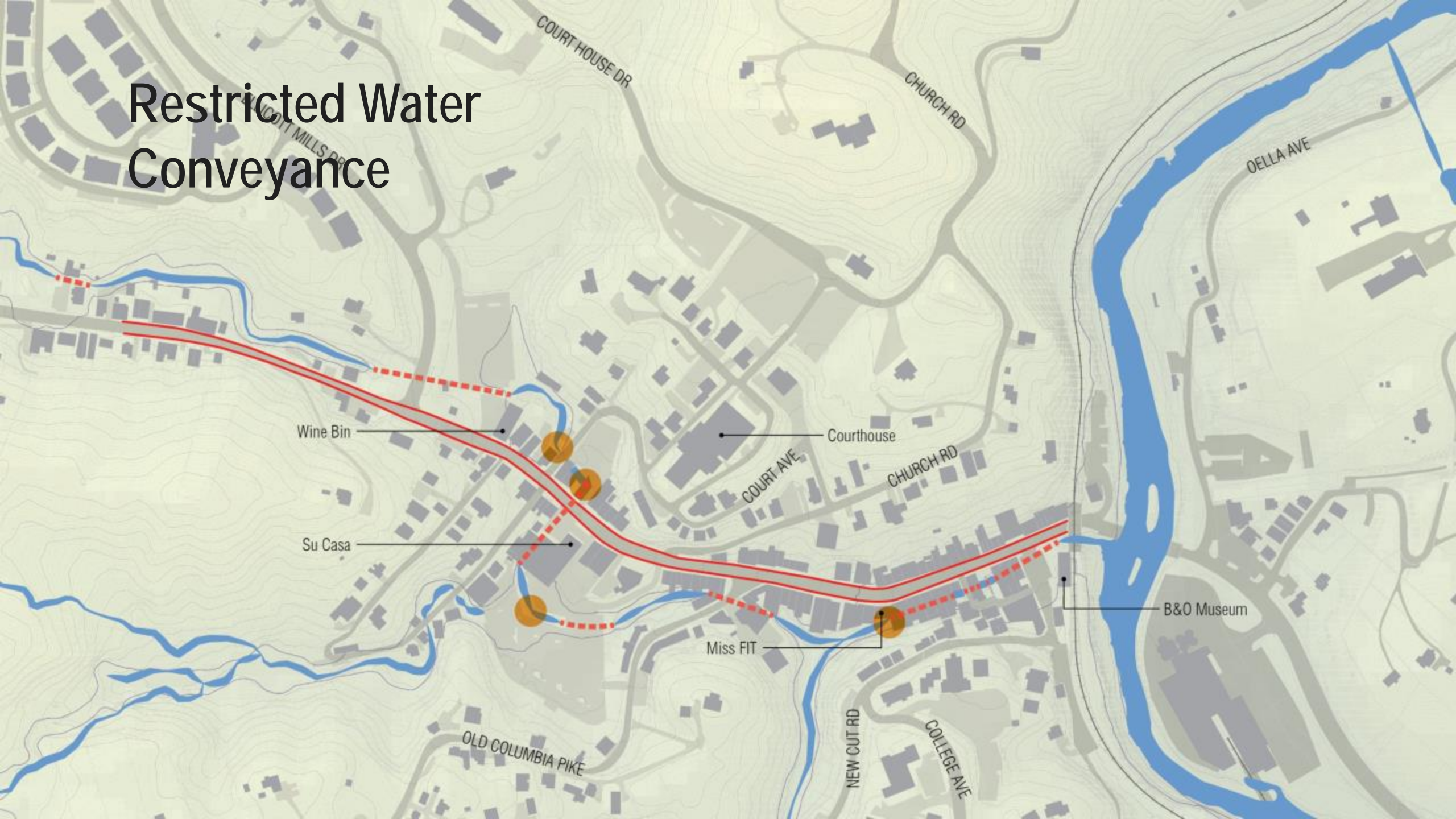
Development Patterns



Pedestrian Circulation



Restricted Water Conveyance



Flood Water Paths



Watershed Master Plan Scope

Integrated Approach to Building Resiliency and Reducing Risk

- *Integrate the Pillars – Rebuilding, Preservation, Economic Development, Environment and Unique Place Values*

Rebuilding

- **Parking** (*structure, enforcement, shuttle, etc.*)
- **Sidewalks** (*materials, crosswalks, etc.*)
- **Utilities** (*underground lines, capacity, etc.*)
- **SWM/Retention**
- **Floodproofing Buildings**
- **Stream Channel Improvements**
(*channel access, maintenance, depth and width, etc.*)
- **Transit** (*Regional connections, incentives, etc.*)
- **Streets** (*traffic-calming, traffic patterns, etc.*)
- **Cleanliness**
- **Public Amenities** (*comforts, "placemaking", etc.*)
- **Wayfinding/Signage** (*parking, attractions, etc.*)
- **Public Restrooms**

Preservation

A faded historical map of a city area, likely Columbus, Ohio, showing streets, a river (the Olentangy River), and a railroad. The map is light-colored and serves as a background for the text.

- **Historically Appropriate Restoration and Rehabilitation**
(design standards, maintain character and scale, etc.)
- **Historic Preservation Education**
(increased public awareness, staff/commission training, etc.)
- **Building Maintenance**
- **Historic Property Maintenance**
- **Historic Property Database**
(inventory, new designations, etc.)
- **Funding**

Economic Development

- Business Preparedness
- Public Access to Historic Sites
(operation hours, programming, staff expansion, etc.)
- **Small Business Assistance**
(BID, business services, business survey, etc.)
- **Marketing Main Street**
(Better promotion, destination restaurants, hotel, etc.)
- Arts and Entertainment District
(three districts, public art, programming, etc.)
- **Development** *(balanced, transition zone, mixed-use development, etc.)*

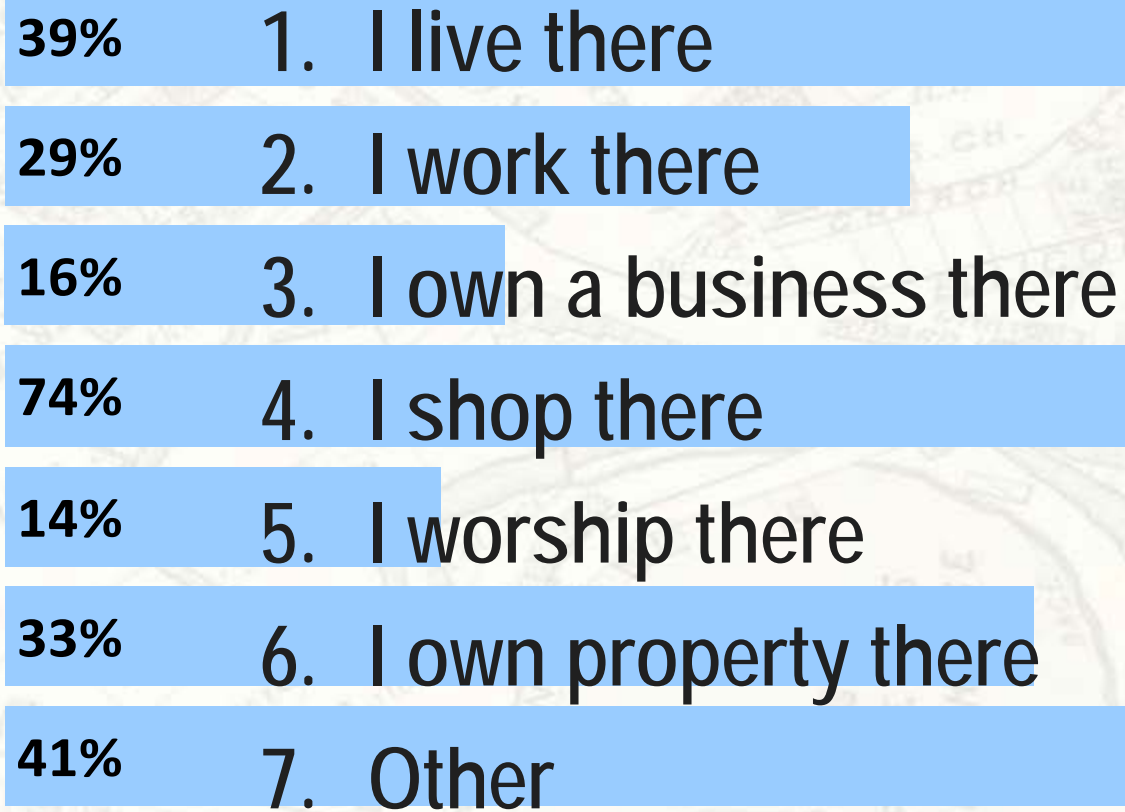
Environment

- Native Planting
- **Adding and Improving Open Space**
(waterfront access, Patapsco River Greenway, downtown green space connectivity, expand and protect green space, recreation facilities, etc.)
- **Stormwater Management and Stream Restoration** *(water quality, bank stabilization and restoration, expanded BMP facilities, green infrastructure, watershed plan, etc.)*
- **Environmental Education** *(best practices for private property, County set standard, etc.)*

Other

- **Community Engagement**
- **Public Safety and Health** (*flood mitigation on County property, application of H&H study, monitoring, etc.*)
- **Regulatory Measures** (*special protection zones, upstream development, etc.*)
- **Expansion of County Staff Resources**
- **Flood Insurance**
- **Residential Development**
- **Seniors**
- **Children and Education**

What is your relationship in the Historic Elicott City Watershed? (press all that apply)



Workshop 2 Table Exercises

As we explore opportunities for Downtown, what is important to consider for the topics below (in addition to flood mitigation ideas from H&H study). For each topic, please record important opportunities and critical concerns. One person at your table will then be a “reporter” and share one consideration for up to two topics.

Topic	Opportunities	Key Issues to Consider
<p data-bbox="453 486 958 629">The Patapsco Riverfront <i>(Existing ideas: better access, outfitters, riverwalk, overlook, etc.)</i></p>		
<p data-bbox="468 965 942 1196">The Courthouse (Buildings & Parking Areas) <i>(Existing ideas: boutique hotel, mixed-use/residential, stormwater capture, etc.)</i></p>		

ELlicott CITY The PLACE TO BE

Placemaking Ideas Board Rebuilding with Resilience

My idea to make Ellicott City THE Place to be is...

Walkable, friendly neighborhood on the Ellicott City River
 San Antonio River (walkable)
 Pedestrian friendly
 Trails
 Main St. becomes pedestrian walk
 → re-route traffic
 Give about 2-3 blocks access to park
 Remove lots and take into park space
 → build a parking garage
 Events and Art! Start along San Antonio, into EC
 more places to eat/ out door during
 dig out river and have beautiful scenic
 More services!
 To include public space of recreational places
 playgrounds or art public installations.
 Old style brick - get homes in main pedestrian area
 Pop up water/drink kiosks - pop up tables - create in parks if necessary

Be more welcoming during winter holiday time
 by displaying seasonal displays being celebrated.
 Retain the scenic view/cultural sensibility
 or street art, etc.
 River levees and rock structures with vegetation, with an emphasis on "natural"

!!! PARKING FOR RESIDENTS !!! (in the EC)

- some lot of 10 and make it a green space of benches
 and avoid cars in downtown parking lot
- create more green spaces, smaller lot (right outdoor
 parking lot) to avoid cars in the downtown
- create a "green" parking lot
 with trees and landscaping
- put electric vehicle charging

Don't open someone to dog-walking. Most don't have
 leashes, because water dogs, public safety being affected.
 Don't prohibit dog-walk even dog-walkers. It
 could create beautiful natural areas, which
 is a positive thing!!
 Don't put water and a public space in the downtown
 or a bridge. Don't put in the park, or not so much
 there to be safe. It's not.

The Place to Be

Amenity	Votes
1 Outdoor Dining	53
2 Lighting	47
3 Stream Daylighting	42
4 Access to Water	38
5 Events/Gatherings	32
Play Water Feature	31
Public Art	21
Temporary Parklets	20
Games	19
Bike Amenities	14
Planting/Color	13
Creative Seating	10
Outdoor Exercise	9
Free Little Libraries	7
Interpretation	4
Visitor Kiosk	3

Main Street Music Festival Input Summary

The following is a summary of the input collected during the September 23, 2017 Main Street Music Festival at the pop-up booth for the Ellicott City Watershed Master Plan.

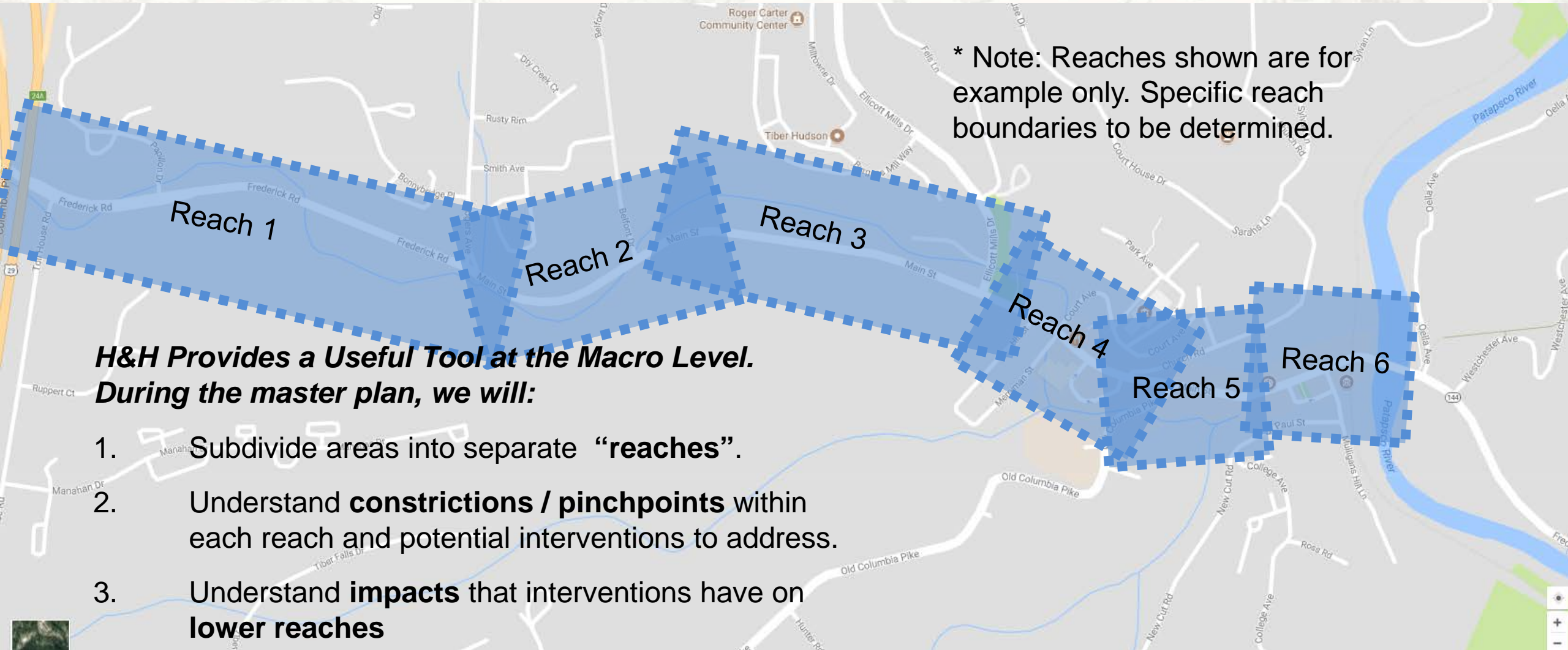
The Place to Be | Placemaking Ideas



Pop-Up
Engagement
September 2017



Approach in Elicott City

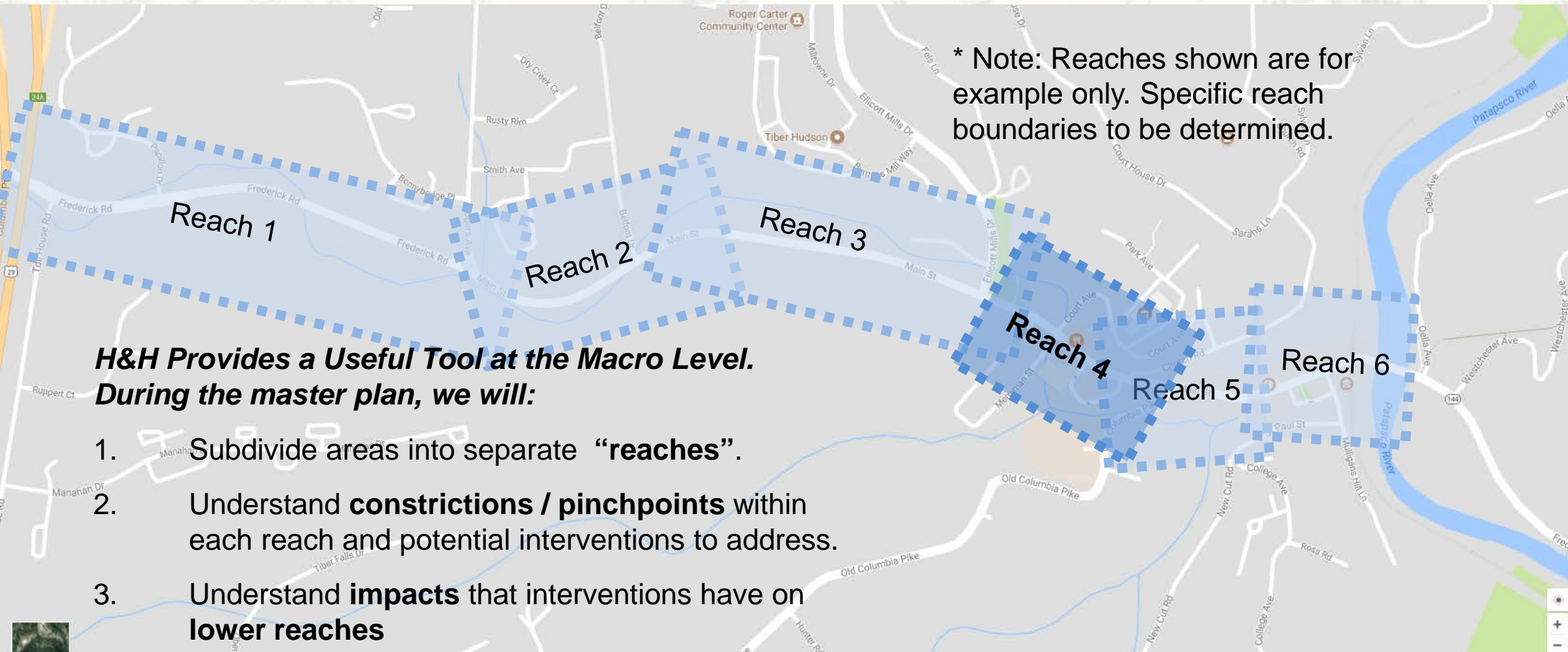


H&H Provides a Useful Tool at the Macro Level.

During the master plan, we will:

1. Subdivide areas into separate “**reaches**”.
2. Understand **constrictions / pinchpoints** within each reach and potential interventions to address.
3. Understand **impacts** that interventions have on **lower reaches**

Approach in Elicott City



H&H Provides a Useful Tool at the Macro Level.

During the master plan, we will:

1. Subdivide areas into separate “reaches”.
2. Understand **constrictions / pinchpoints** within each reach and potential interventions to address.
3. Understand **impacts** that interventions have on **lower reaches**

Example # 1

Sample Project: Improve Lot D *(Could be landscape/placemaking enhancements, improved layout, structured parking, and/or infill development, etc.)*

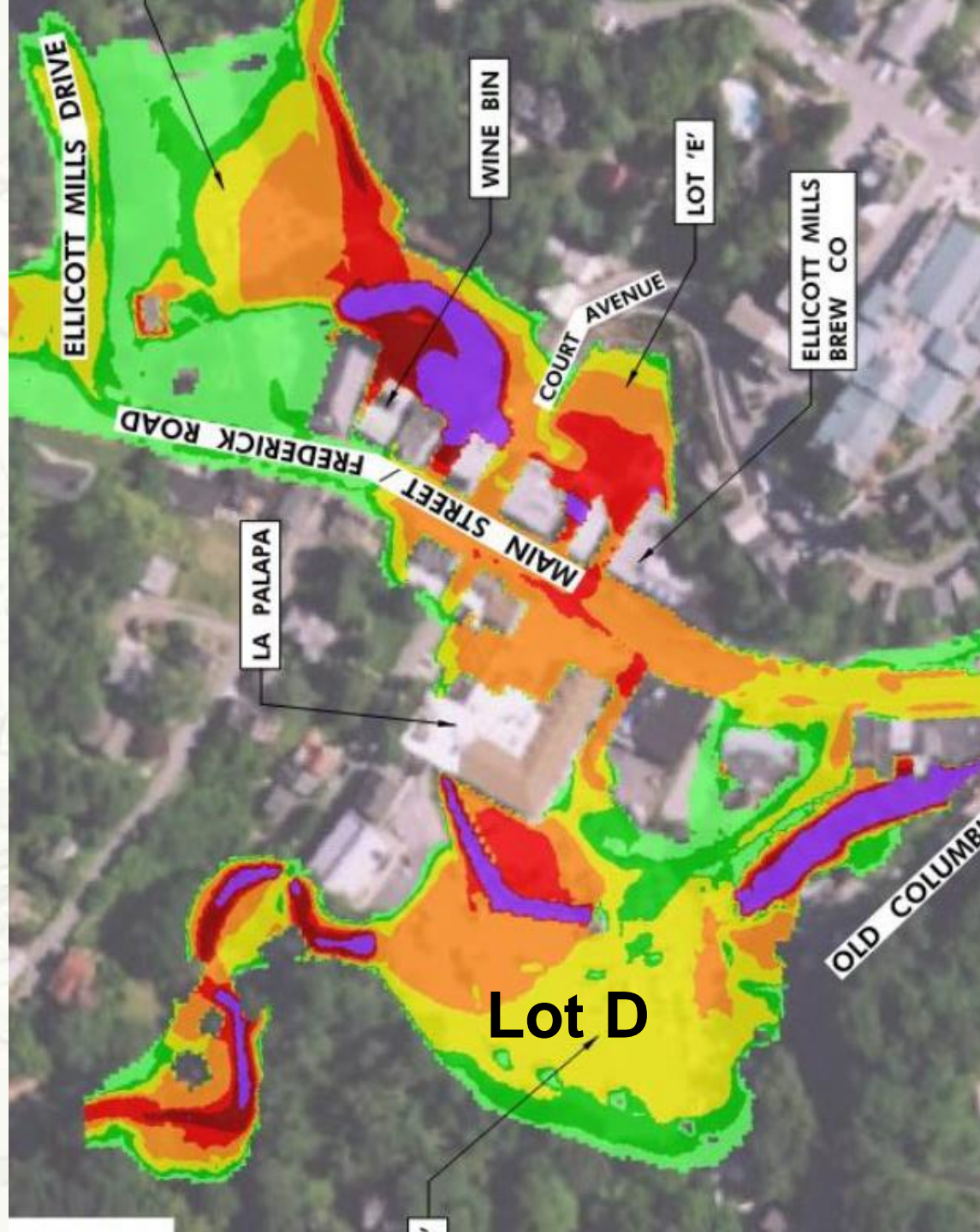
Example of the **inter-relationship** of potential **enhancement projects** and how the **H&H Study** could **inform** the projects.



Lot D

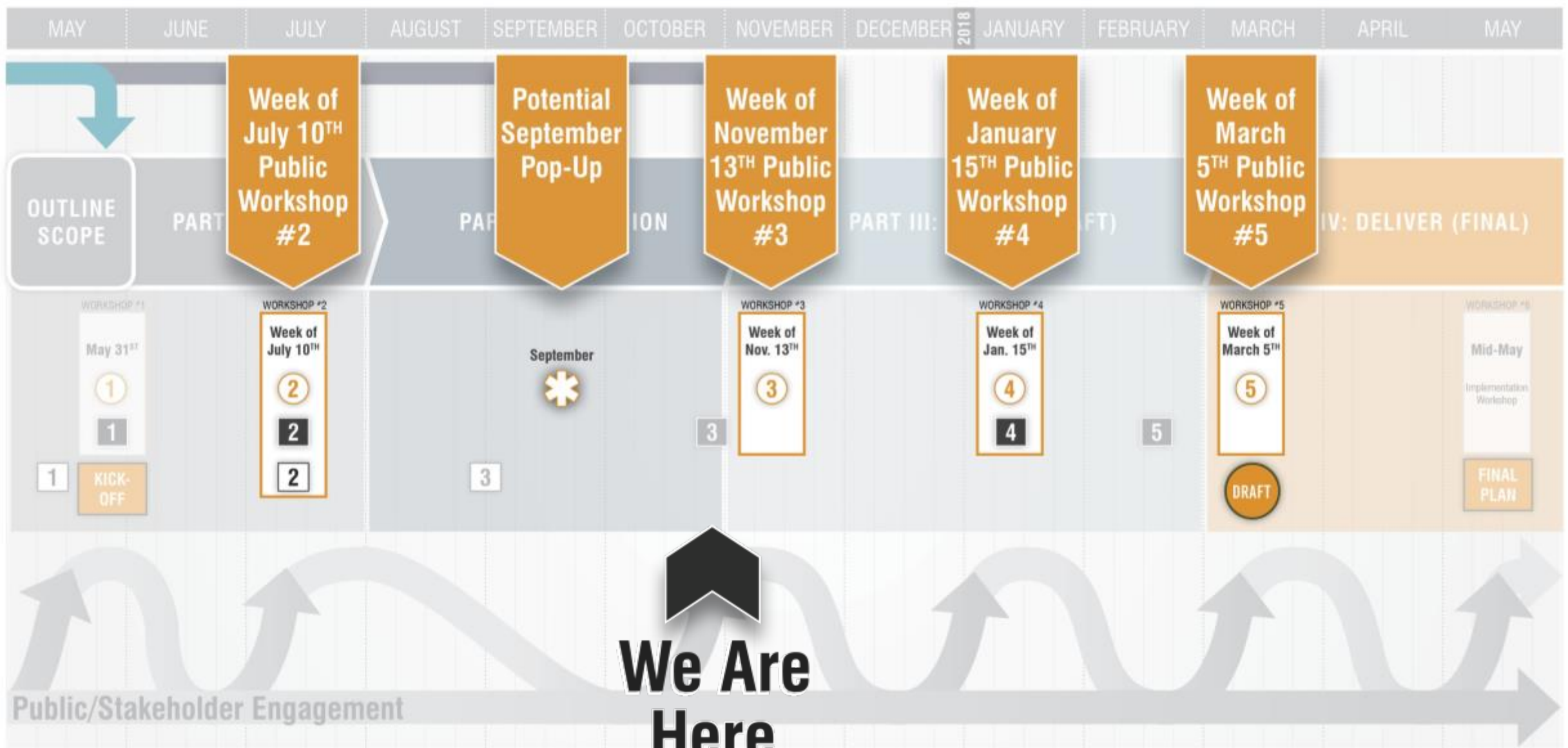
EXAMPLE





Upcoming Input Opportunities

-  Public Meeting
-  Technical Team Meeting
-  Army Corps Study
-  MPAT Meeting
-  Special Pop-Up Engagement
-  McCormick Taylor H&H Study



We Are Here

Public/Stakeholder Engagement

Where We are Now

1. November 14 and 15: November Workshops (#3)

Focus:

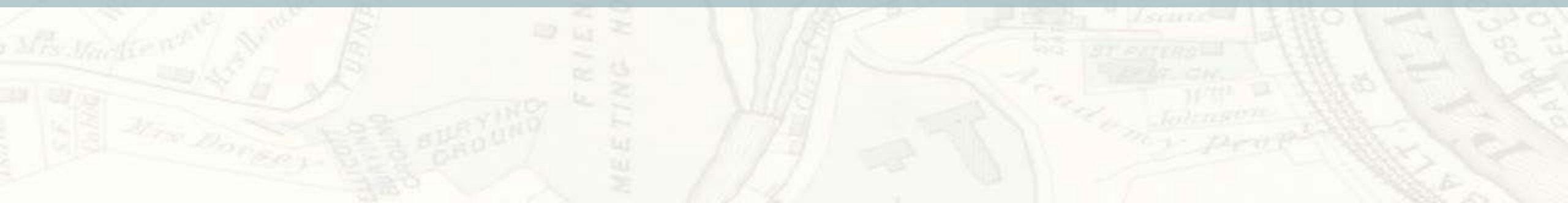
- *Transportation, parking, downtown opportunity sites and organization*
- *Market Assessment*

1. Week of January 15: Workshop #4 – Additional Recommendations

- *Opportunity sites evaluated based upon 2 D model analysis*
- *West End and watershed-wide recommendations + updates and additional recommendations for core*



GENERAL QUESTIONS?





www.howardcountymd.gov/ECMP

www.ecstrong.org

THANK YOU!

Peter G. Conrad, AICP,
Deputy Director
Howard County Department of Planning and Zoning
pconrad@howardcountymd.gov