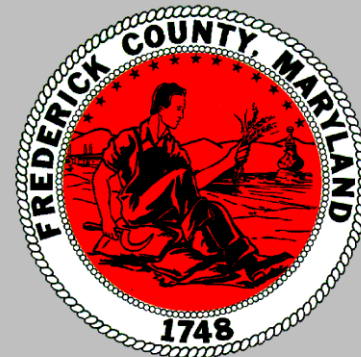


Maryland Sustainable Growth Commission

May 13, 2013

Frederick County, Maryland
Community Development Division



Land Area
424,960 acres
664 square miles

Population
237,853

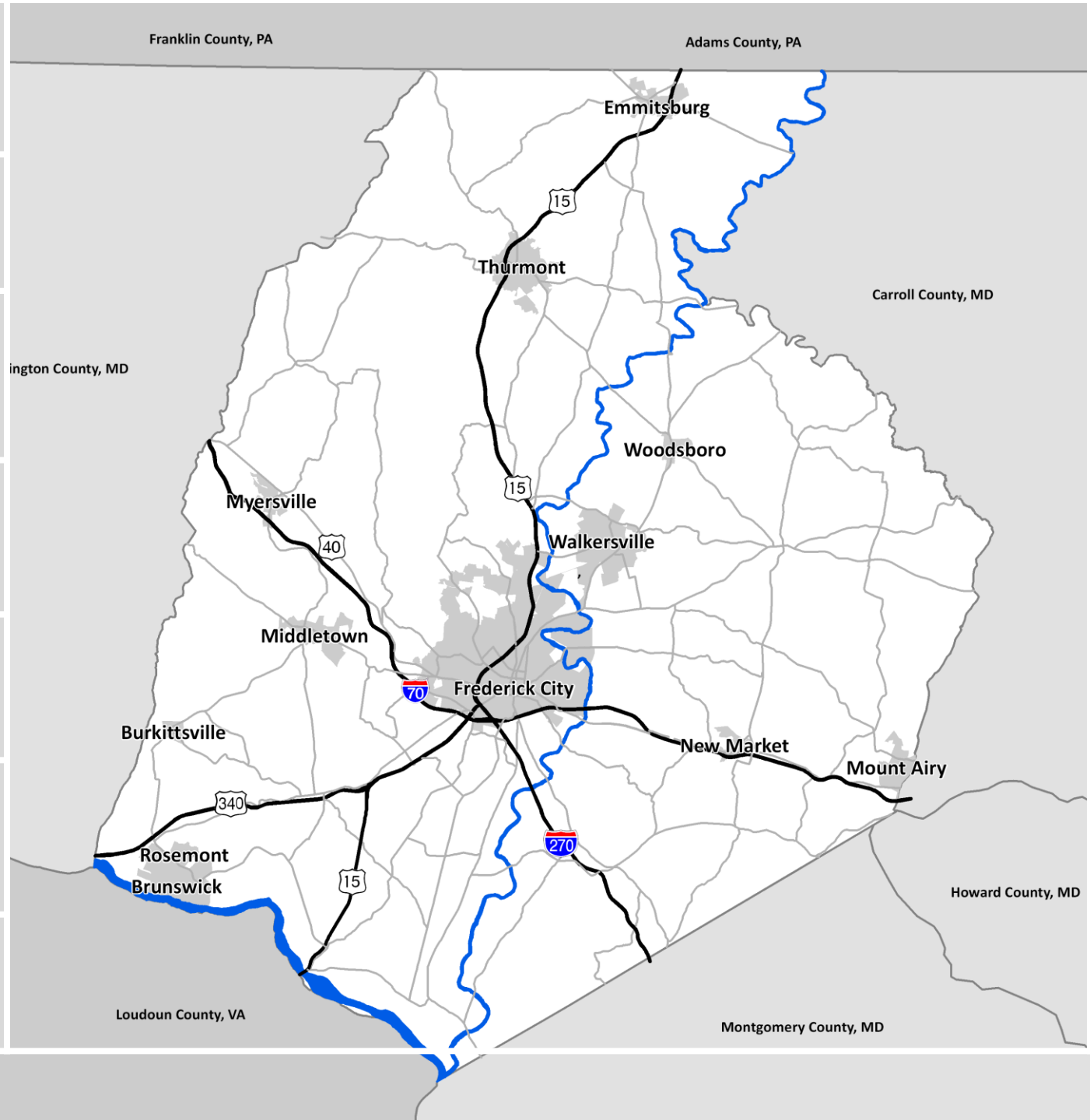
Municipal Population
99,197
12 municipalities

Existing Dwellings
84,800
(2010 US Census)

Ave. Household Size
2.7 persons/HH

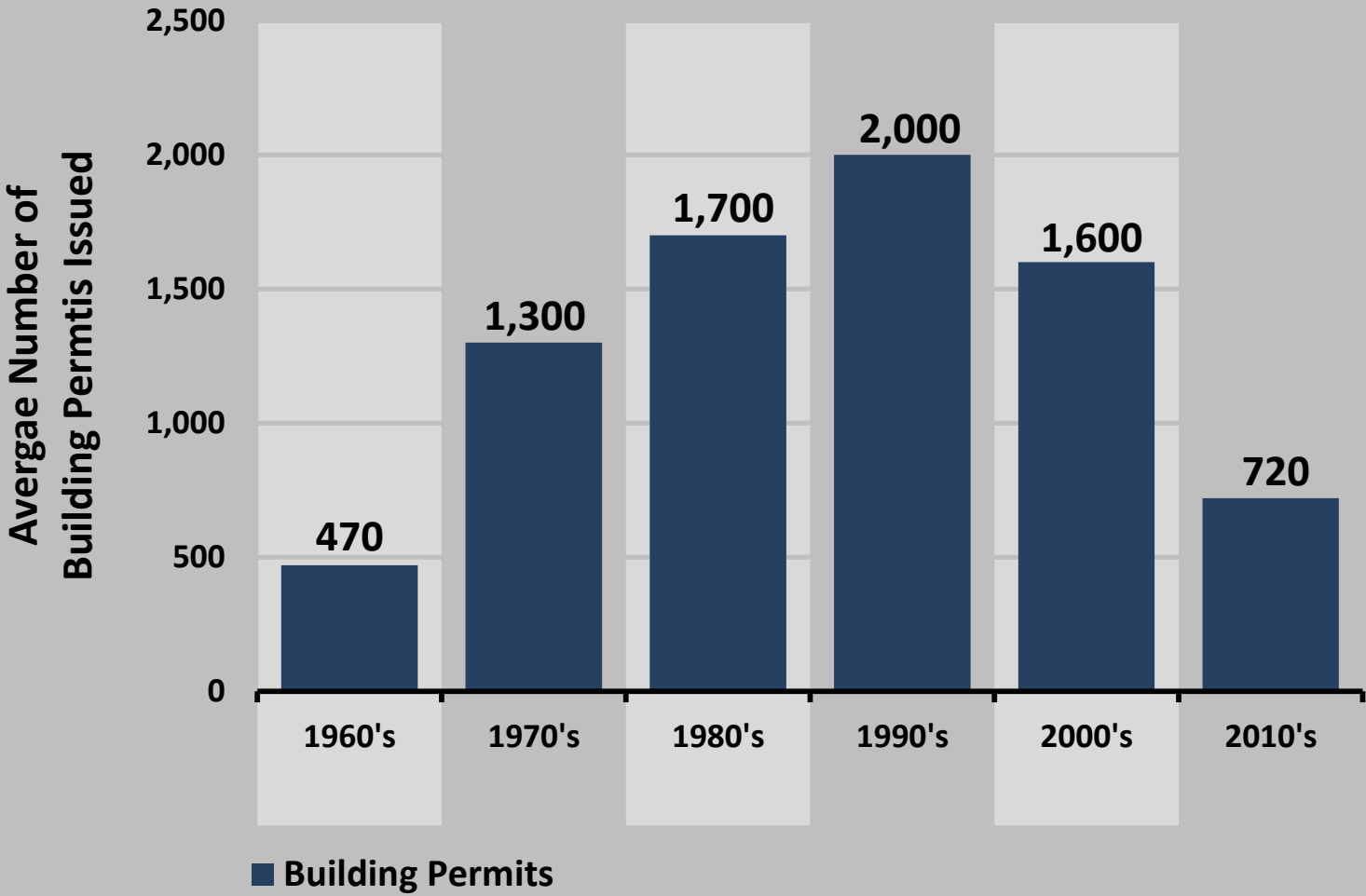
Existing Jobs
98,695

Jobs/Housing Ratio
1.2



Average Annual Housing Permits by Decade

Frederick County



Source: Frederick County Community Development Division

Frederick County's Projected Growth

Population

2010: **233,400**

2030: **294,900**

Housing

2010: **84,800**

2030: **107,700**

Jobs

2010: **98,700**

2030: **109,800**

In the next 20 years we will...



grow by **61,500** more people...



add **22,900** more households...



and add **11,100** more jobs.

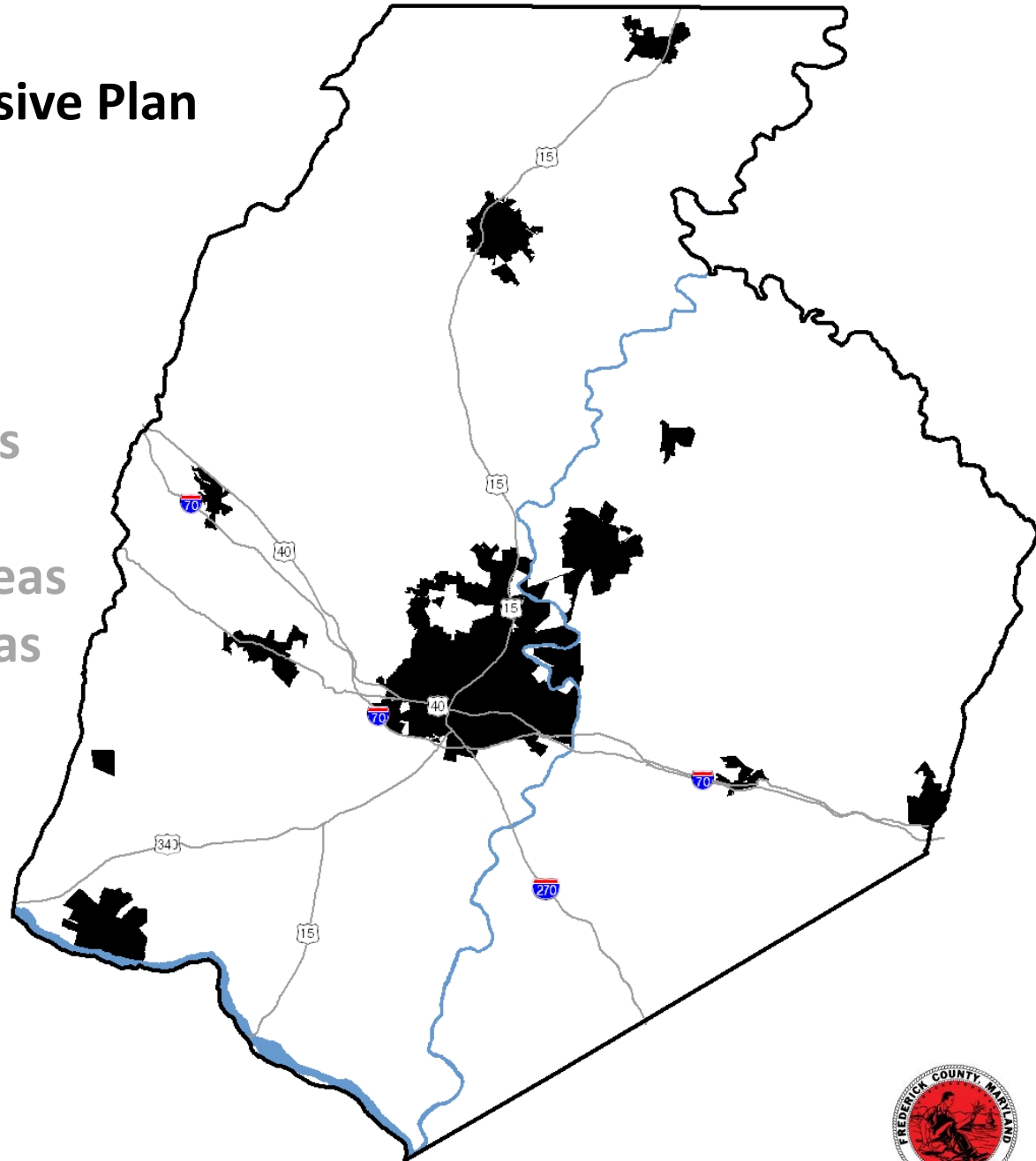
General Plan Components

- Community Plan
- Agricultural and Rural Communities Plan
- Green Infrastructure Plan

General Plan 2010 County Comprehensive Plan Amended 2012

Municipalities

- Municipal Growth Areas
- Community Growth Areas
- Natural Resource Areas
- Agricultural and Rural Areas
- Priority Preservation Areas
- Ag. Pres. Easements



**General Plan
2010 County Comprehensive Plan
Amended 2012**

Municipalities

Municipal Growth Areas

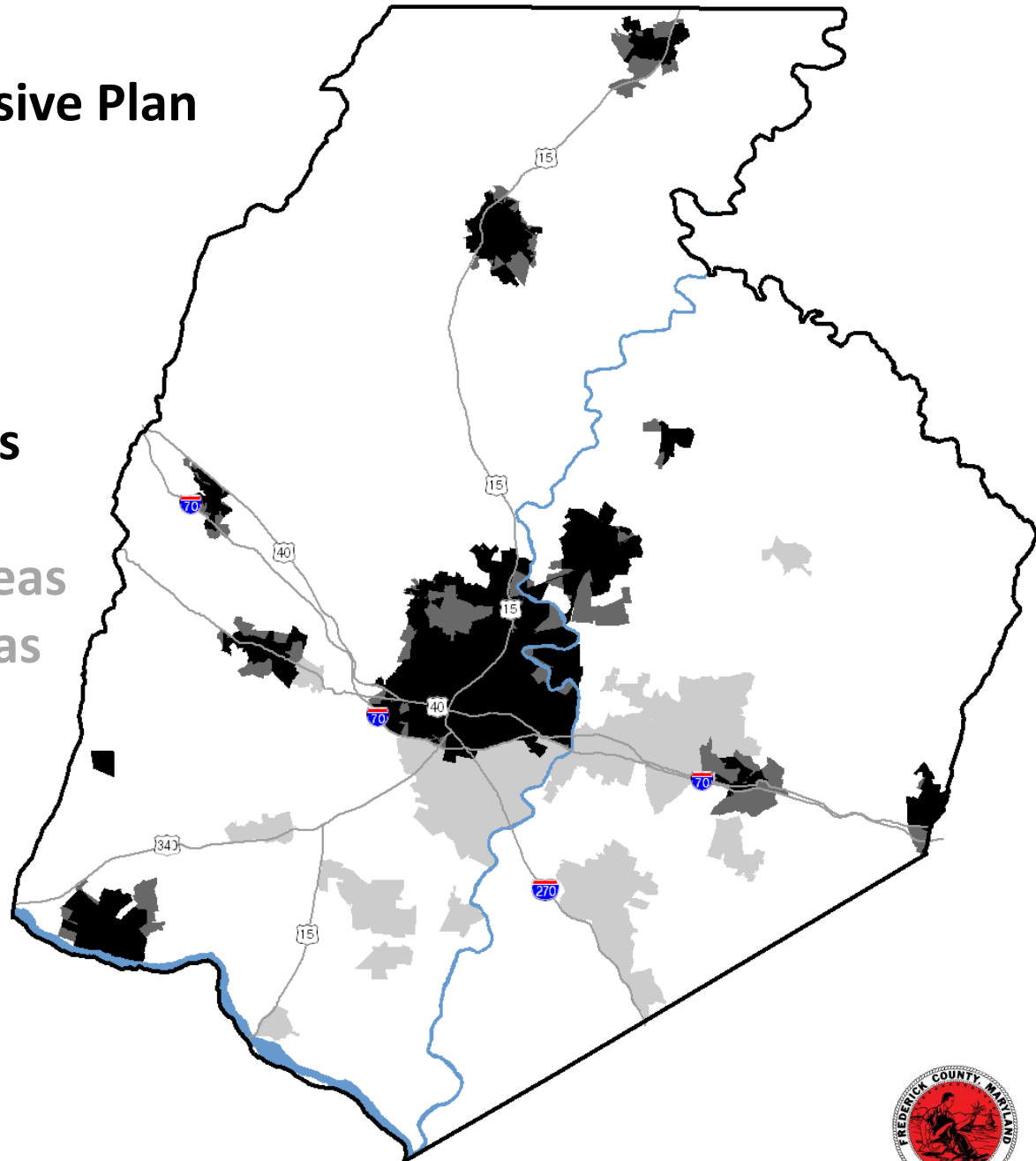
Community Growth Areas

Natural Resource Areas

Agricultural and Rural Areas

Priority Preservation Areas

Ag. Pres. Easements



**General Plan
2010 County Comprehensive Plan
Amended 2012**

Municipalities

Municipal Growth Areas

Community Growth Areas

Natural Resource Areas

Agricultural and Rural Areas

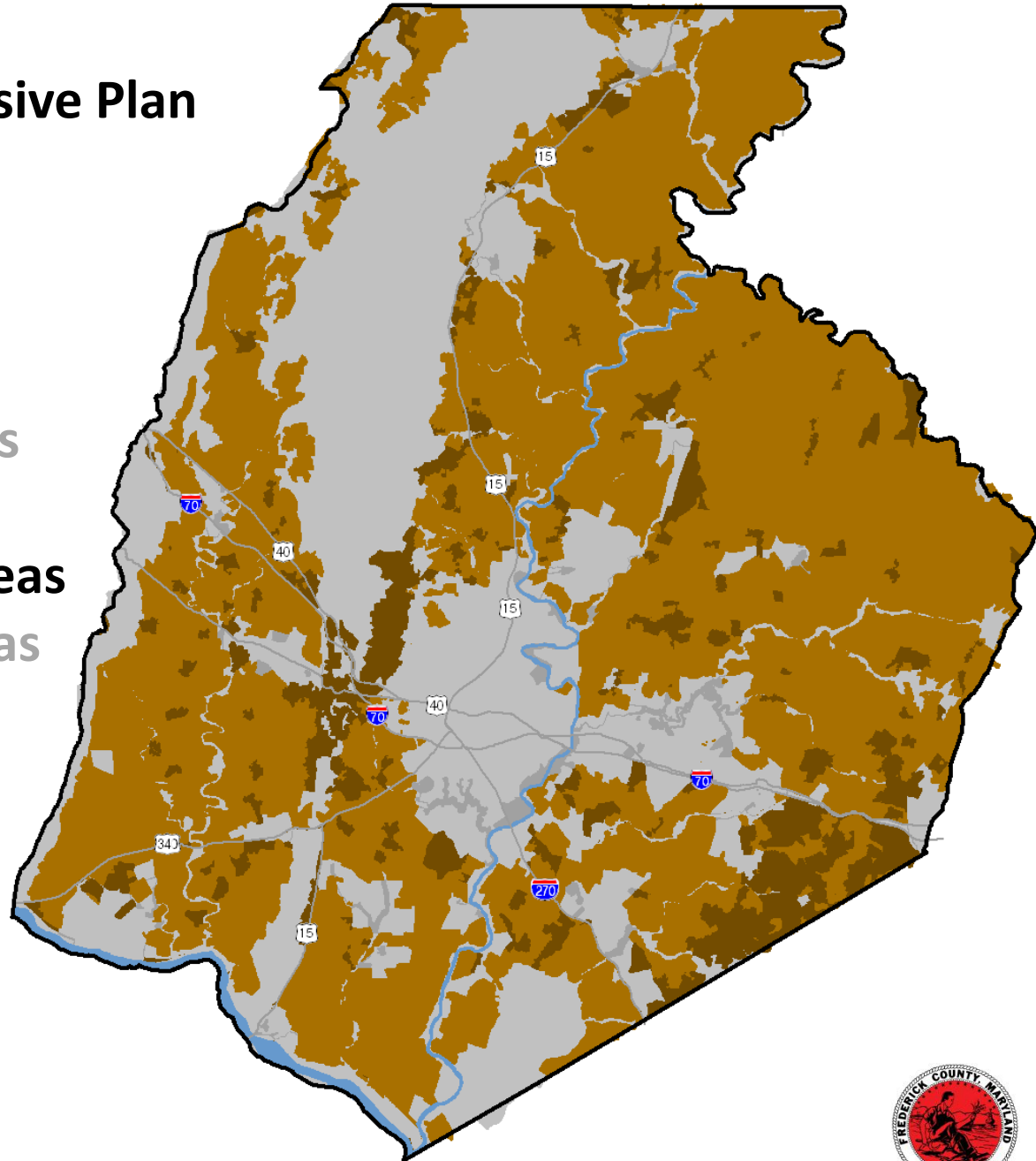
Priority Preservation Areas

Ag. Pres. Easements



**General Plan
2010 County Comprehensive Plan
Amended 2012**

Municipalities
Municipal Growth Areas
Community Growth Areas
Natural Resource Areas
Agricultural and Rural Areas
Priority Preservation Areas
Ag. Pres. Easements



**General Plan
2010 County Comprehensive Plan
Amended 2012**

Municipalities

Municipal Growth Areas

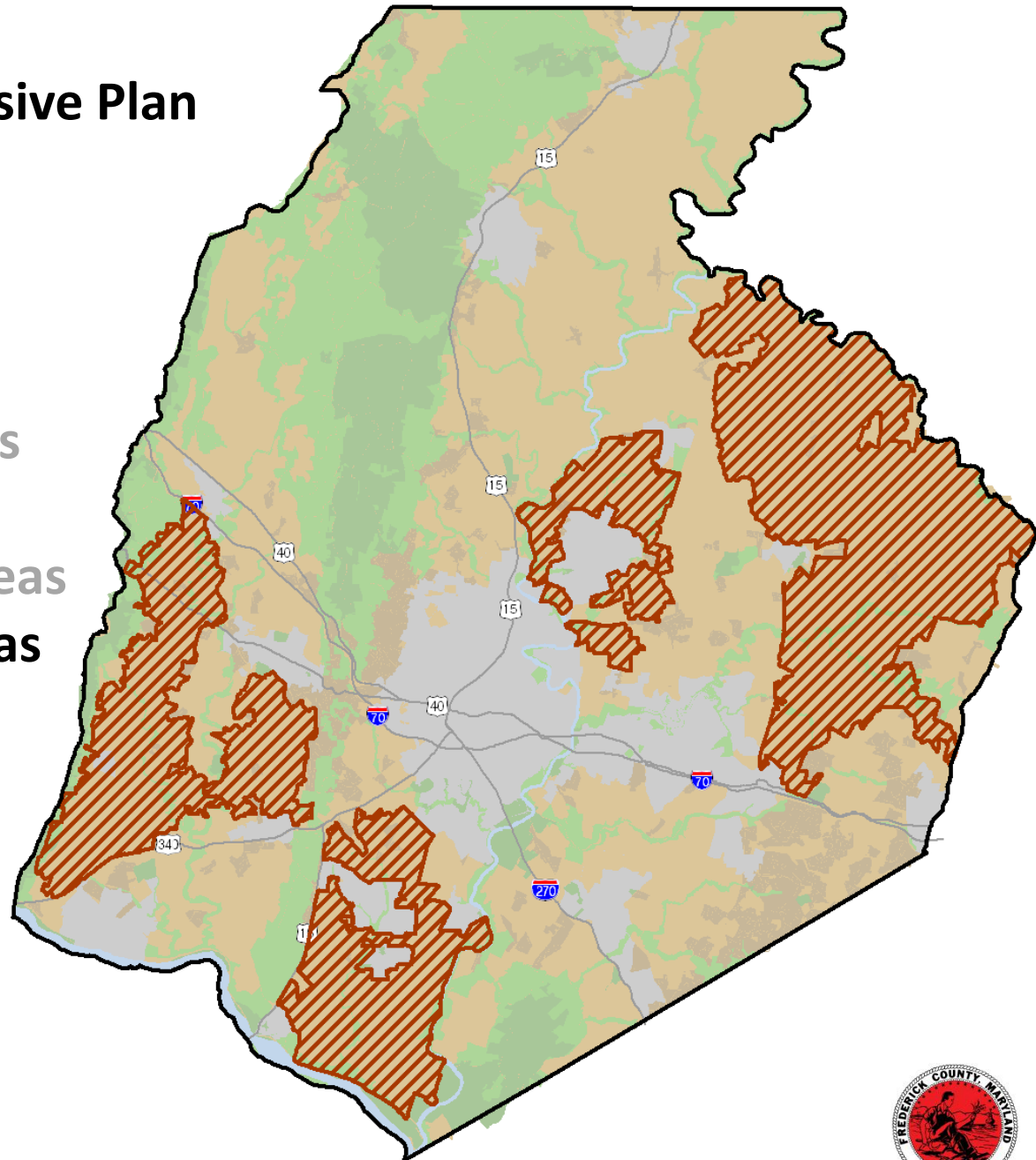
Community Growth Areas

Natural Resource Areas

Agricultural and Rural Areas

Priority Preservation Areas

Ag. Pres. Easements

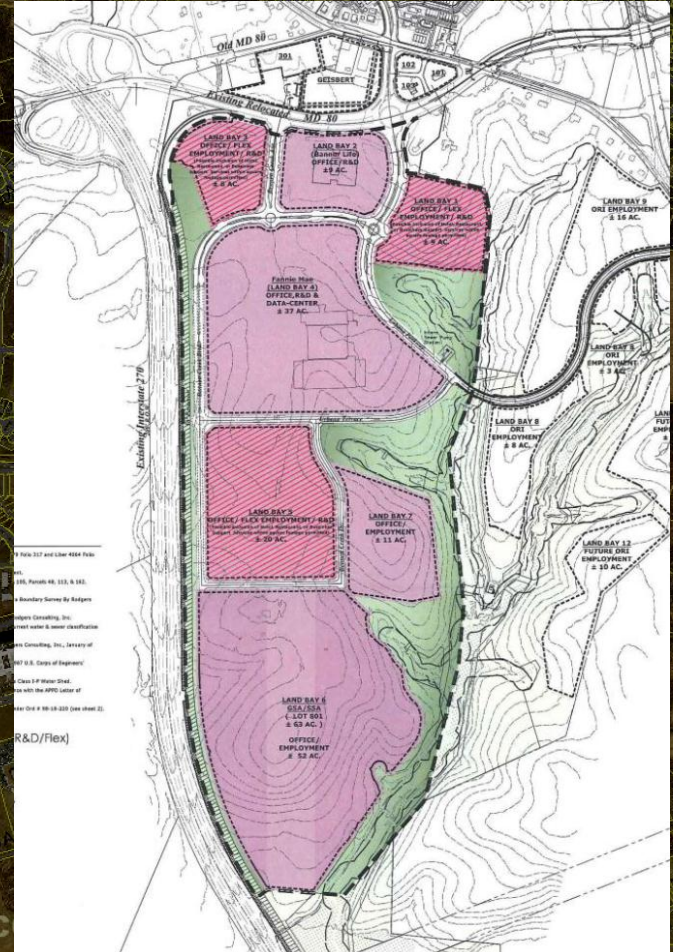




Urbana Northern

Urbana Office Research Center

1.9 million square feet of employment
50,000 square feet of commercial
610 dwellings



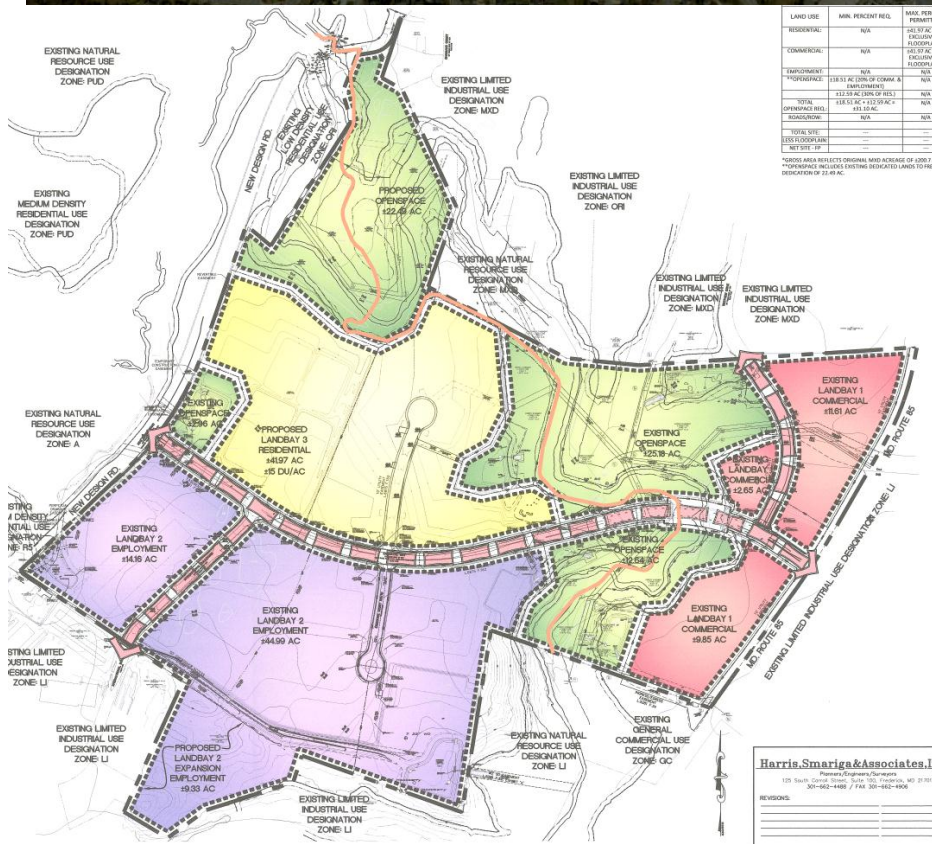
Urbana Office

- 2.1 million square feet of employment
- 73,000 square feet of commercial
- 150 room hotel



An aerial photograph of a suburban area with a central region outlined in black. The outlined region is labeled "Westview South MXD". The surrounding area includes residential streets, houses, and some commercial buildings. A river is visible in the bottom right corner.

Westview South MXD



- 1.65 million square feet of employment
- 350,000 square feet of commercial
- 615 dwellings

South MXD