

FINDER Software Installation Instructions

This *FINDER* Software Installation Guide guides you through installation of the *FINDER* Software Version 6.5 as of April 15, 2009 currently downloadable via the Maryland Department of Planning (MDP) *FINDER* website.

To install the *FINDER* Version 6.5 software from a *FINDER* Software DVD, proceed directly to Step 3. *FINDER* Software DVDs are only made available to those Subscribers who do not have an Internet connect. **Note that some *FINDER* features are not accessible without an Internet connection.**

Step 1: Download the *FINDER* Software

To download the latest version of the software, visit the *FINDER* home page at:

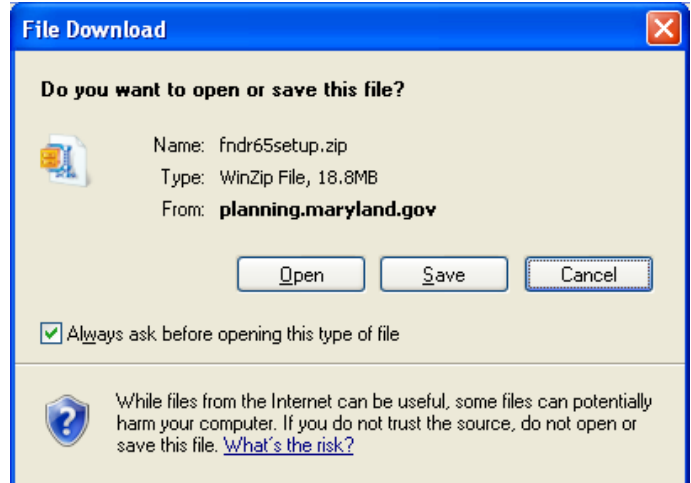
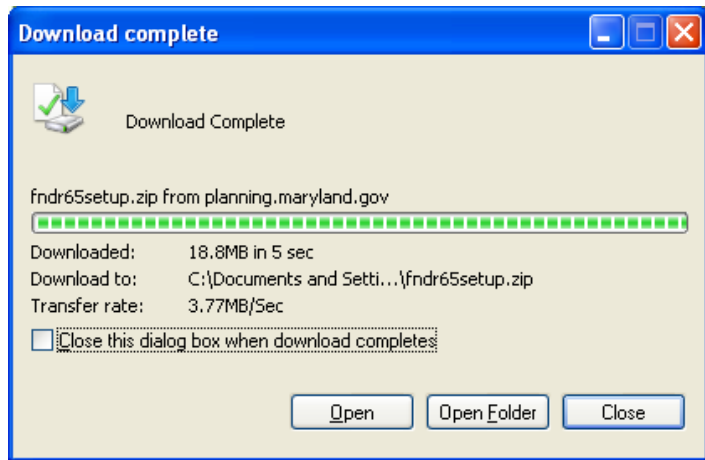
<http://planning.maryland.gov/OurProducts/PropertyMapProducts/FinderProduct.shtml>

Click on [Download the Software](#) under [Download the Free *FINDER* Software](#) on the right-hand side of the web page, as shown below. Clicking on the [Installation Instructions](#) link opens the document you are reading now.

The screenshot shows the MDP FINDER Online website in Internet Explorer. The browser address bar displays the URL: <http://planning.maryland.gov/OurProducts/PropertyMapProducts/FinderProduct.shtml>. The website header includes the Maryland Department of Planning logo and navigation links: HOME, OUR WORK, OUR PRODUCTS, YOUR PART, HISTORICAL TRUST, and DATA CENTER. A search bar is located in the top right corner. The main content area features a section titled "FINDER DVDs User-Friendly Desktop GIS to use with MDP's free custom software". To the right of this section is a "Login to the Subscriber Website" form with fields for Username and Password, and a "Login to Subscriber Site" button. Below the main content, there are several sections: "Discover FINDER" with a link to "Subscriber's Guide"; "Download the Free FINDER Software" with links for "Installation Instructions" and "Download the Software" (highlighted with a red box); "Order FINDER Maps & Data DVDs" with links for "Price List", "License Agreement", and "Order Form"; and "Subscribers Only: Take the free Training Class". The footer of the browser shows "Internet" and "100%" zoom level.

Step 1: Download the *FINDER* Software (continued)

Next, click Save to save the WinZip® file to a location you specify on your computer.



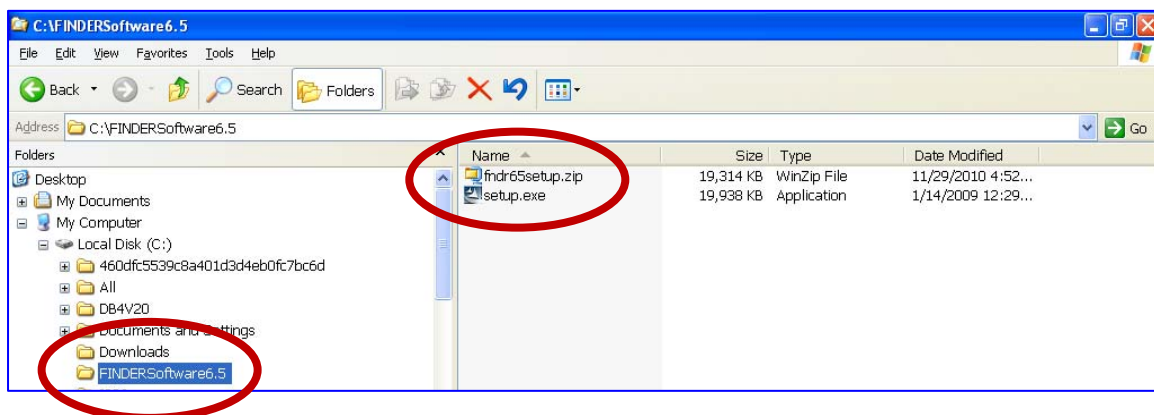
In this example, the Subscriber created a new **C:\FINDERSoftware6.5** folder on their computer to store the download. We suggest you the same, and navigate to this location to save the *FINDER* software setup file, **fndr65setup.zip**. When the download is complete, and this may take some time depending on the speed of your Internet connection, the notification above appears to complete Step 1.

Step 2: Unzip the Downloaded *FINDER* Software

To unzip the *FINDER* software, right-click on the Windows Start button and click **Explore**. Browse to the location where you saved the zipped *FINDER* setup file on your computer, the C:\FINDERSoftware6.5 folder. Double-click or right-click on **fndr65setup.zip** to open WinZip® or the Windows compressed folder utility and extract the **setup.exe** file necessary to install the *FINDER* Software Version 6.5. If necessary, you can download the latest free evaluation version of WinZip® at:

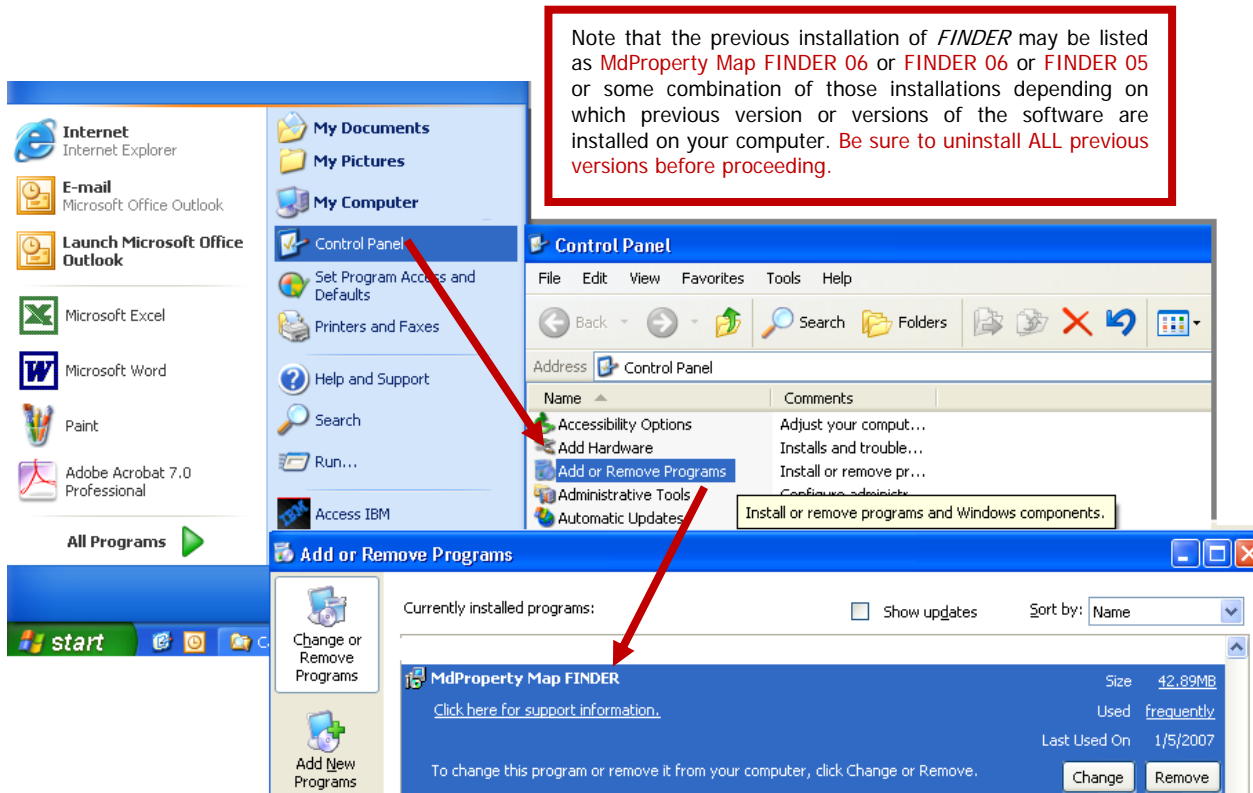
<http://www.winzip.com/>

If you save setup.exe to the same folder as the downloaded fndr65setup.zip file, the folder looks like this on your computer at the end of Step 2:



Step 3: Install the *FINDER* Software

IMPORTANT: Before proceeding with Step 3, uninstall any previous version of *FINDER* using the Add/Remove Programs utility accessible from the Windows Control Panel.



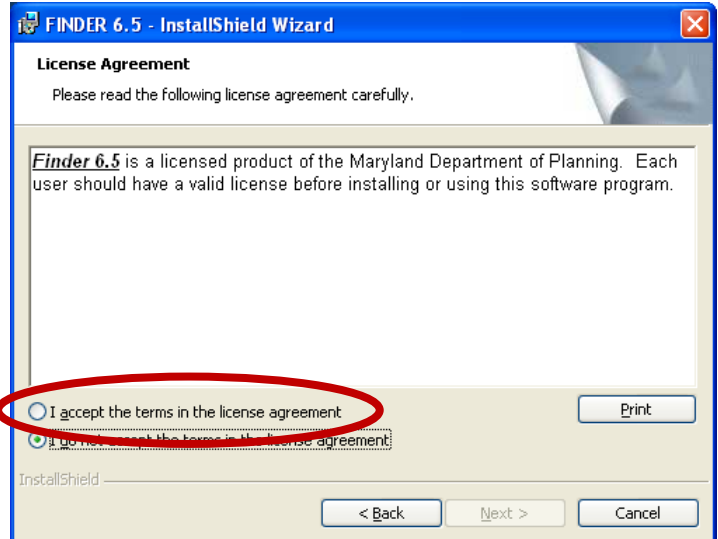
Once you have uninstalled any prior versions of the *FINDER* software, you are ready to install *FINDER* Software Version 6.5 as of April 15, 2009. After downloading and extracting the setup.exe file from the *FINDER* website, or inserting a *FINDER* Software DVD into your DVD drive, click **Run...** from the Windows Start menu, then click **Browse...** and navigate to the location where the **setup.exe** file is located. In the file browser, select **setup.exe** and click **Open**.

When **setup.exe** is listed in the **Run** window, click **OK** and the **InstallShield** window to the right opens. Click **Next >** to go to the next window.

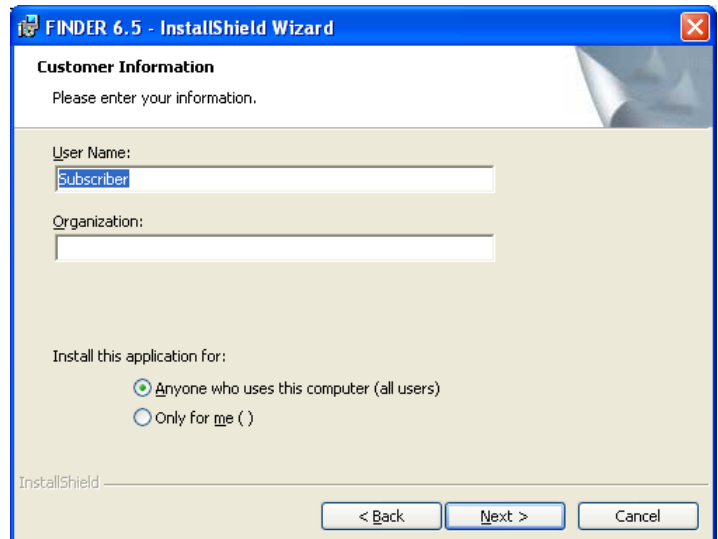


Step 3: Install the *FINDER* Software (continued)

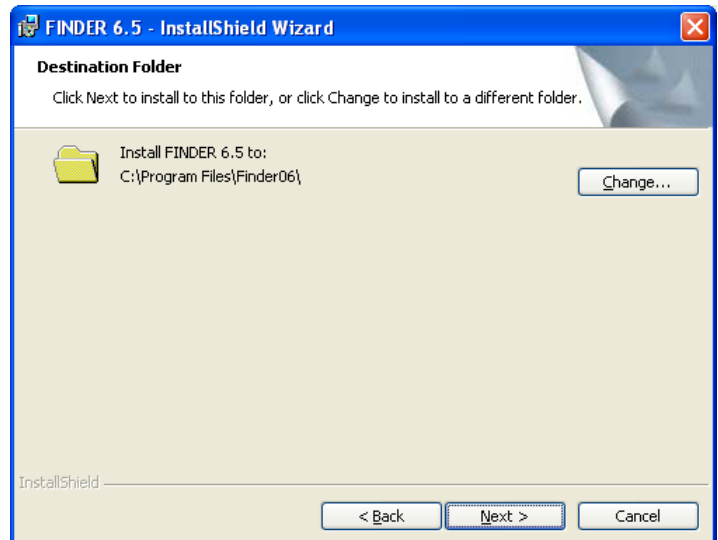
Select the radial button next to **I accept the terms in the license agreement** and click **Next >** to go to the next window.



Enter your **User Name** and **Organization** if desired. This is not the Subscriber Website username assigned to you by the Maryland Department of Planning, and you do not need to fill in this information to proceed with the installation. Once you are finished, click **Next >** to go to the next window.

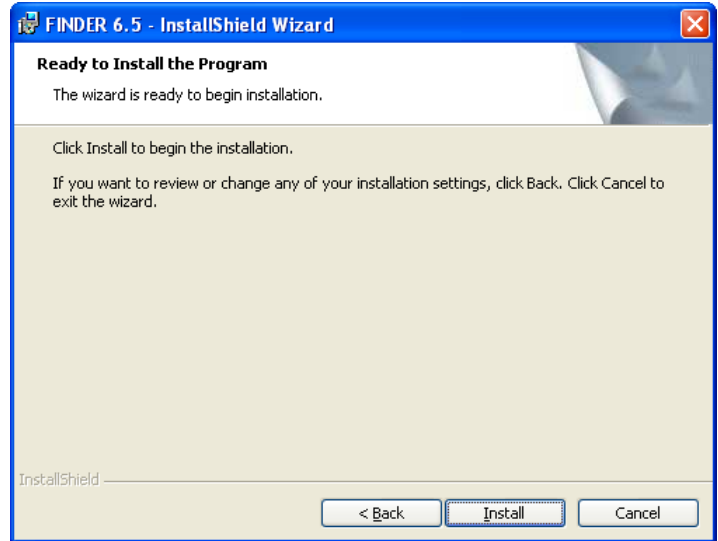


Next, you must confirm or change the **Destination Folder** where the *FINDER* program files will be installed. We recommend that you accept the default location for the program files. Once you are finished, click **Next >** to go to the next window.

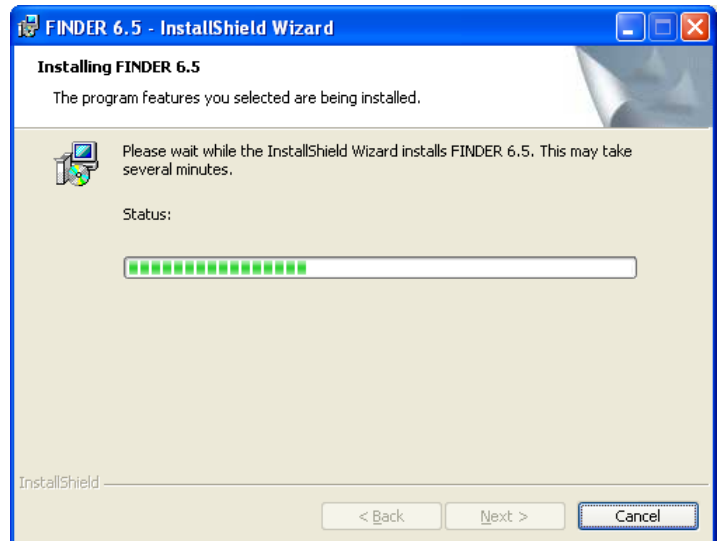


Step 3: Install the *FINDER* Software (continued)

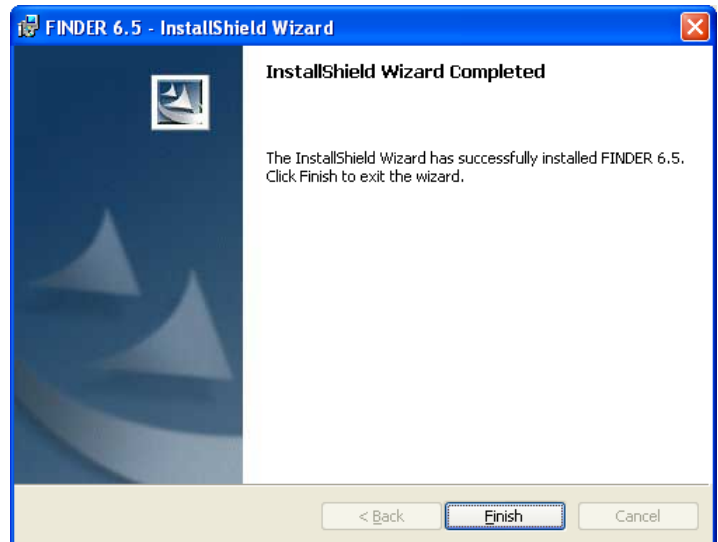
Once you are satisfied with the installation settings, click **Install** to begin installation of the *FINDER* software. Click **< Back** if you want to change any installation settings.



Once you click **Install**, InstallShield Wizard begins installing the *FINDER* software. This may take several minutes.



When InstallShield has completed installation of the software, the window to the right appears. Click **Finish** to close the InstallShield Wizard.



Step 3: Install the *FINDER* Software (continued)



FINDER 6.5

Once the *FINDER* software has been installed, you will see a shortcut for *FINDER* on your desktop.

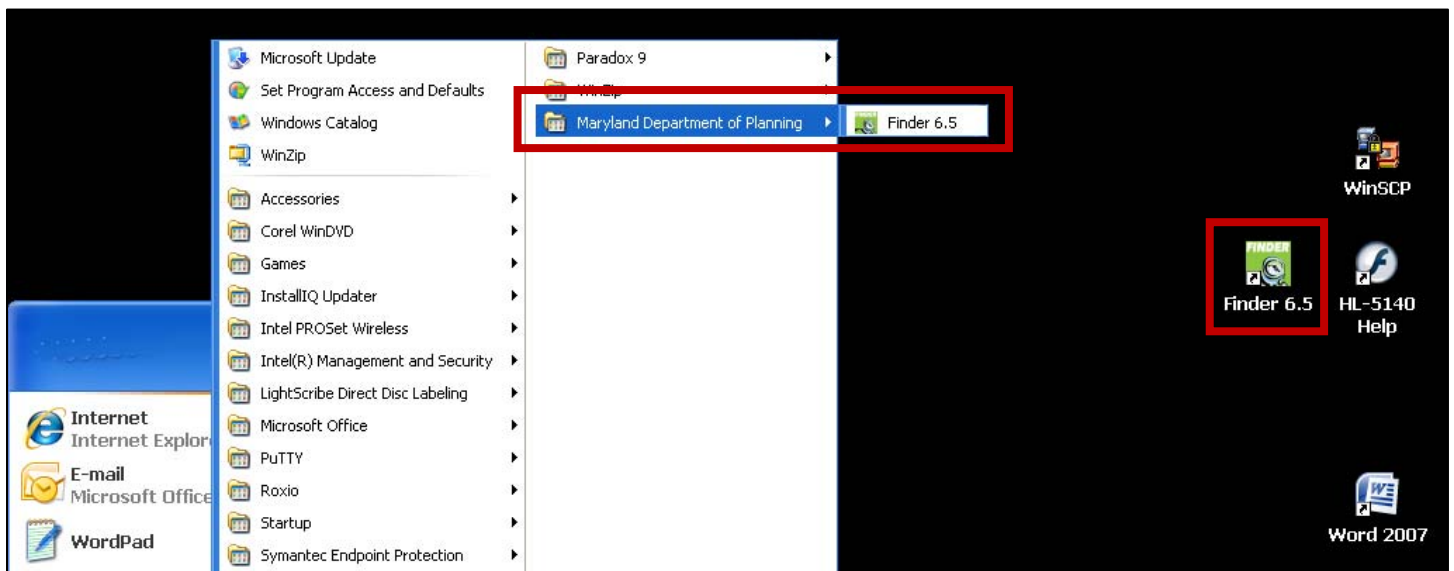


MdProperty
Map FINDER
06

Depending on your computer setup, you may still see a shortcut for the previous version of *FINDER*. This can occur because in some cases, the *FINDER* 6.5 installation program is not able to clear the old shortcut as part of the installation process.

If this happens, you can get rid of the old *FINDER* shortcut by right-clicking on it and selecting **Delete** from the drop-down menu. If you choose not to delete the old shortcut, that's fine – but if you double-click on it to start *FINDER*, it now takes you to the latest *FINDER* Version 6.5 software that you just installed on your computer.

A startup menu selection for the *FINDER* software called **FINDER 6.5** is created under **Programs | Maryland Department of Planning** on your Windows Start menu. You are now ready to open the *FINDER* software and start working with your *FINDER* Maps and Data DVD.



See the *FINDER* Subscriber's Guide (FndUsr11.pdf) in the Datadocs folder on each *FINDER* Maps and Data DVD for detailed instructions on working with the *FINDER* software.