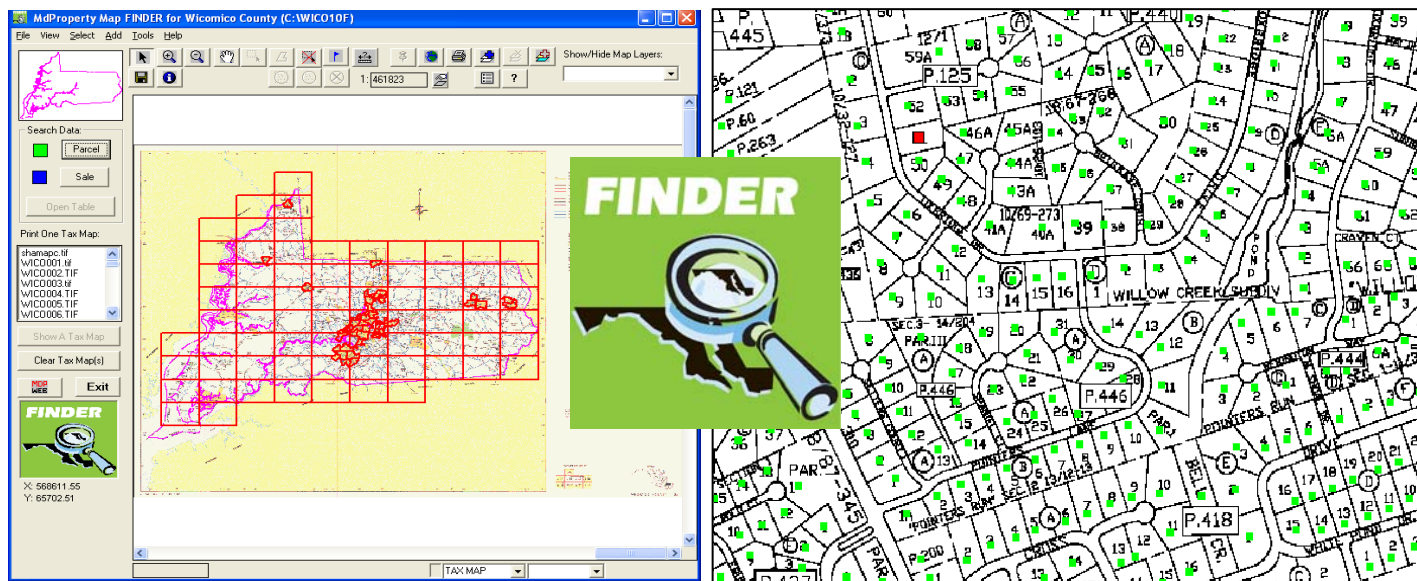


The Maryland Department of Planning (MDP) has assembled this *FINDER* Maps and Data DVD with the tools you need to view electronic tax maps and to search (via parcel account number, street address, owner name, MAP and PARCEL number and user defined criteria) for parcel locations countywide. Once a parcel or group of parcels is selected, you can link directly to the current parcel information via the Maryland State Department of Assessments and Taxation (SDAT) Real Property website, view the tax map where the parcel is located and print a parcel report. The property maps and parcel data files contained on the DVD have been set up to work with MDP's *free* custom *FINDER* software in a Windows environment – the latest version of the custom software can be downloaded from the *FINDER* Website.

The DVD includes 109 tax maps covering all of Wicomico County, 46,496 parcel records referenced to the tax maps, Computer Assisted Mass Appraisal (CAMA) data for residential parcels and a recent parcel Sales update file for the 12-month period ending March 2011. The DVD also contains a State Highway Administration road map, a tax map index grid, and an ADC® page number grid to help orient the user to locations inside Wicomico County. Also included with *FINDER* are a number of additional thematic map layers including ZIP code boundary files, census geography and census demographic data, legislative and congressional district boundary files, land use/land cover data, Priority Funding Area (PFA) designations, floodplain data, generalized zoning designations, protected land boundaries, sewer service area boundaries, National Register of Historic Places (NRHP) Maryland coverage, watershed data and residential Sales x,y point files for CY 2009-2002 derived from the SDAT parcel data.



Wicomico County has a population of 98,733 people (April 1, 2010 Census PL94-171 release). The jurisdiction is located in Maryland's Lower Eastern Shore region and is bounded by Dorchester County to the west and north, the State of Delaware to the north, Worcester County to the east and south and Somerset County to the south. The tax maps included on the DVD are current as of November 2010 and the countywide parcel reference information was downloaded in late July 2011.

To download the latest version of the *free* *FINDER* software or to learn more about the *FINDER* Maps and Data DVD product or using the product with the *FINDER* software, go to:

<http://planning.maryland.gov/OurProducts/PropertyMapProducts/FinderProduct.shtml>

To learn about *FINDER* Online, visit our website at:

<http://planning.maryland.gov/OurProducts/PropertyMapProducts/FinderOnlineProduct.shtml>

or call 410-767-4450, toll free 1-877-767-6272