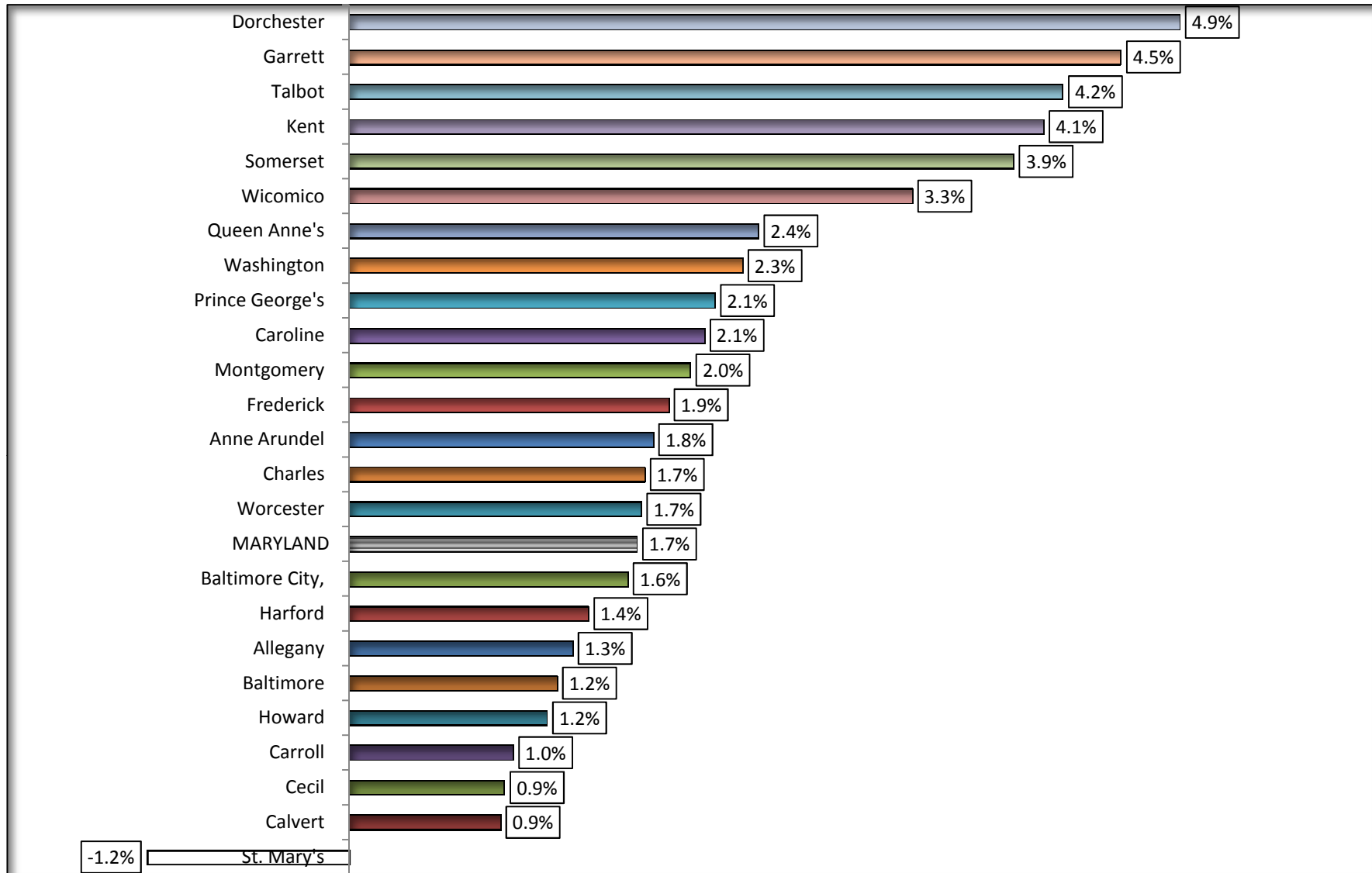


**Chart 7B. MARYLAND AND JURISDICTION  
ABSOLUTE VACANCY RATE CHANGE: 2000 - 2010**



SOURCE: U. S. Bureau of the Census, Census 2010, P. L. 94 - 17 Release.

Prepared by the Maryland Department of Planning, Projections and Data Analysis / State Data Center, February 2011.