

Smart Growth Listening Sessions

The following charts are a compilation of the answers to the 18 questions posed at each of the nine Smart Growth Listening Sessions.

The following is a key to the session abbreviations used in the charts. The location city and date is also included.

LES – Lower Eastern Shore Region – Salisbury, MD – September 16, 2008

UES – Upper Eastern Shore region – Centreville, MD – September 17, 2008

MDCAP – Maryland Capital Region – Silver Spring, MD – September 18, 2008

SMD – Southern Maryland Region – Hughesville, MD – September 23, 2008

CMD – Central Maryland Region – Woodlawn, MD – September 24, 2008

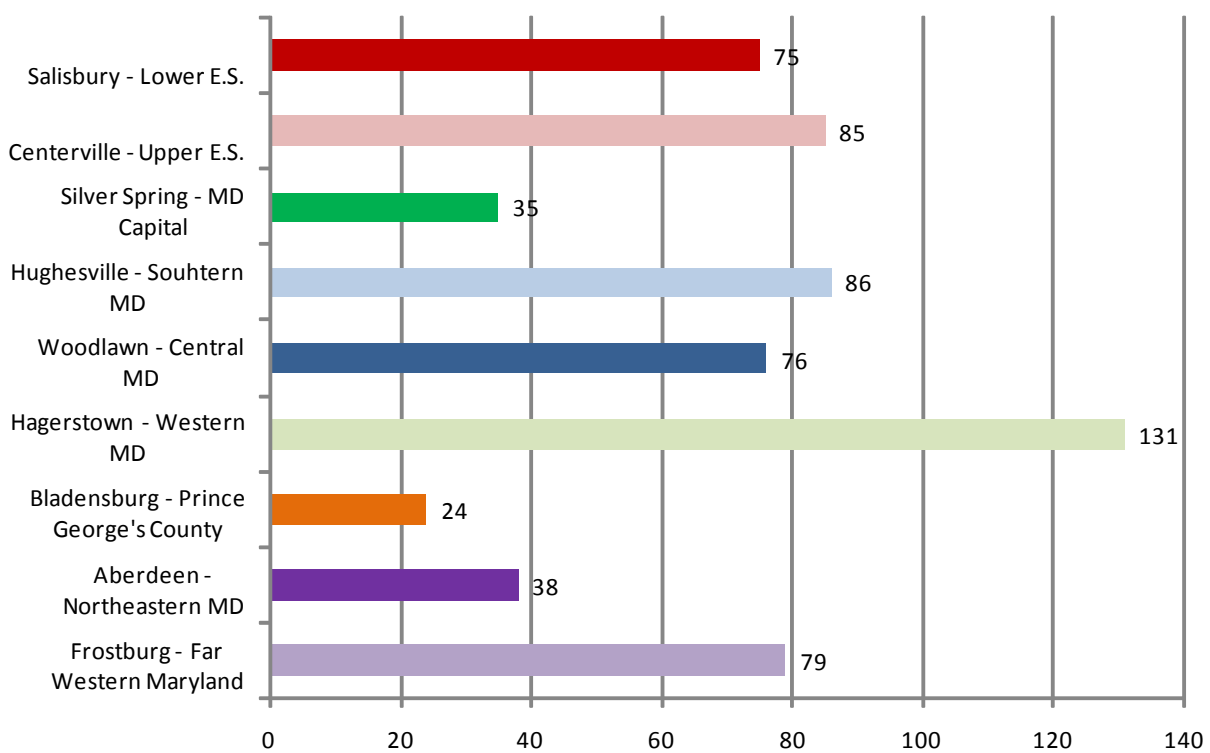
WMD – Western Maryland Region – Hagerstown, MD – September 25, 2008

PGC – Prince George’s County – Bladensburg, MD – October 22, 2008

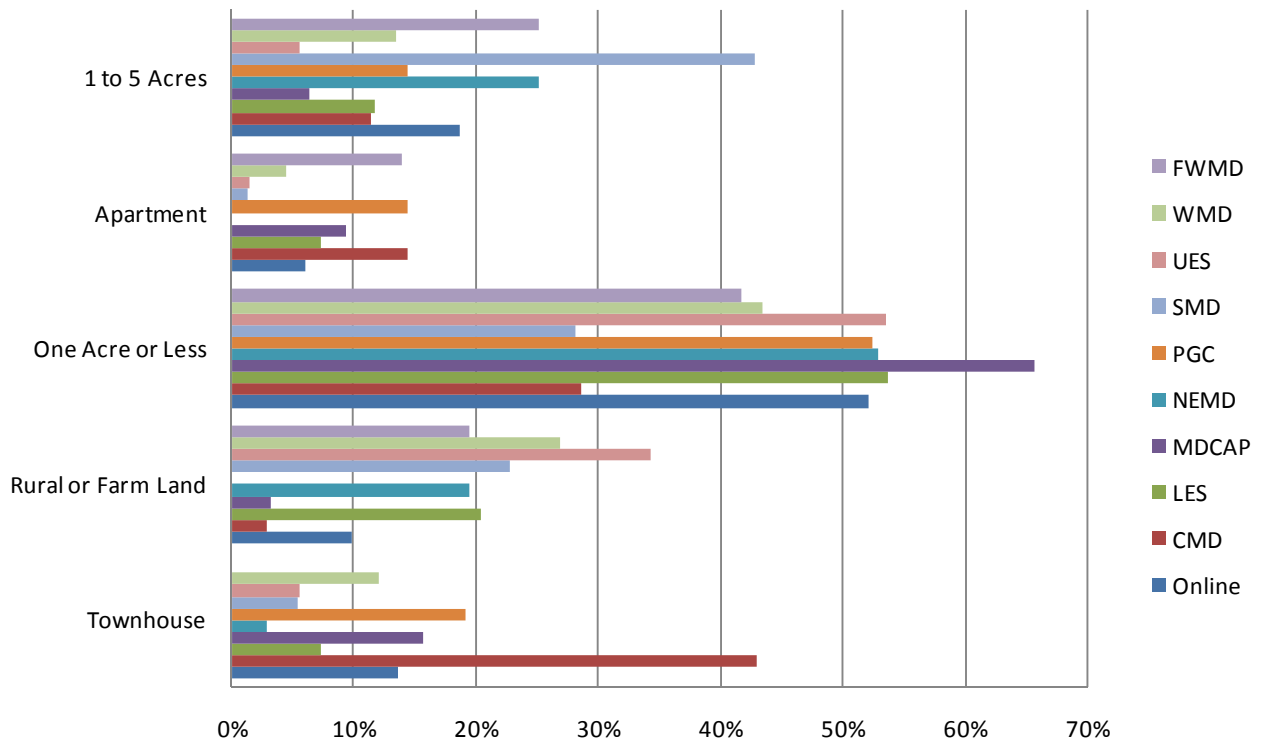
NEMD – Northeast Maryland Region – Aberdeen, MD – October 28, 2008

FWMD – Far Western Maryland Region – Frostburg, MD – December 11, 2008

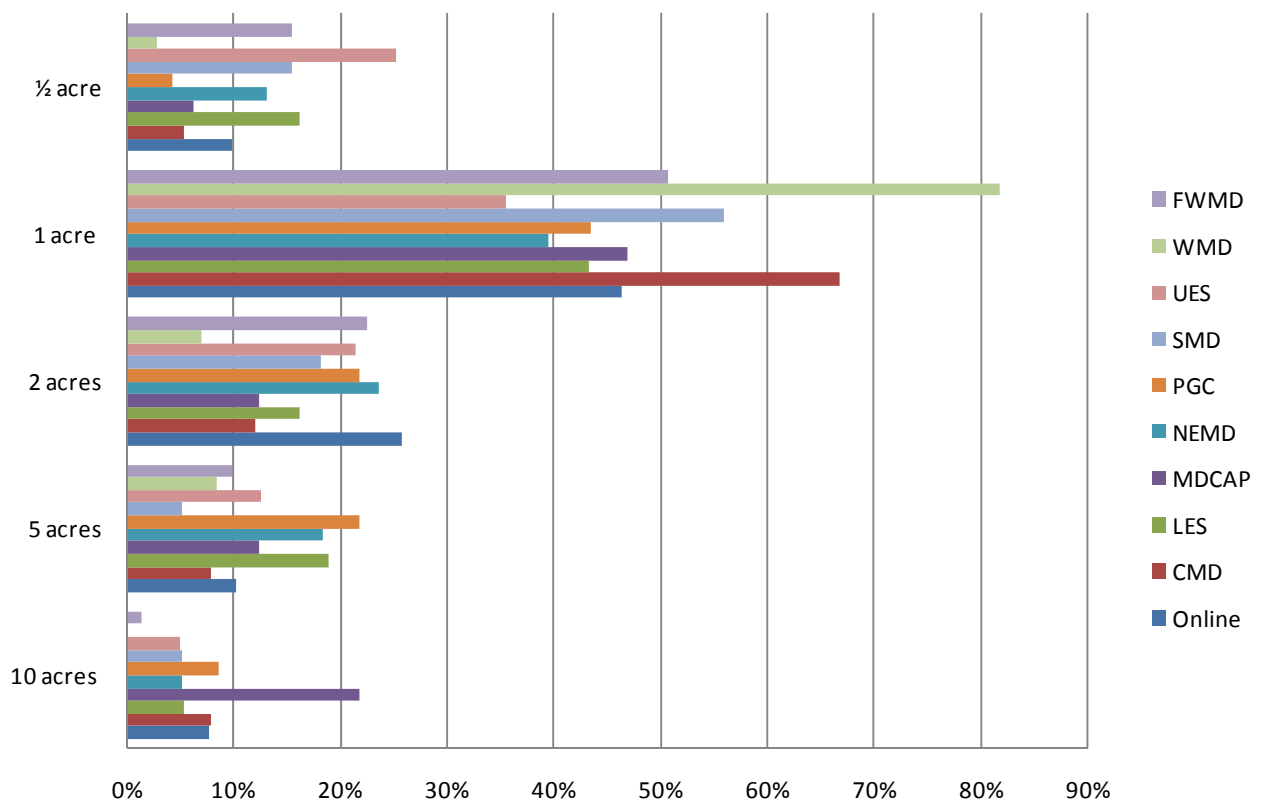
Total Attendance at the Listening Sessions



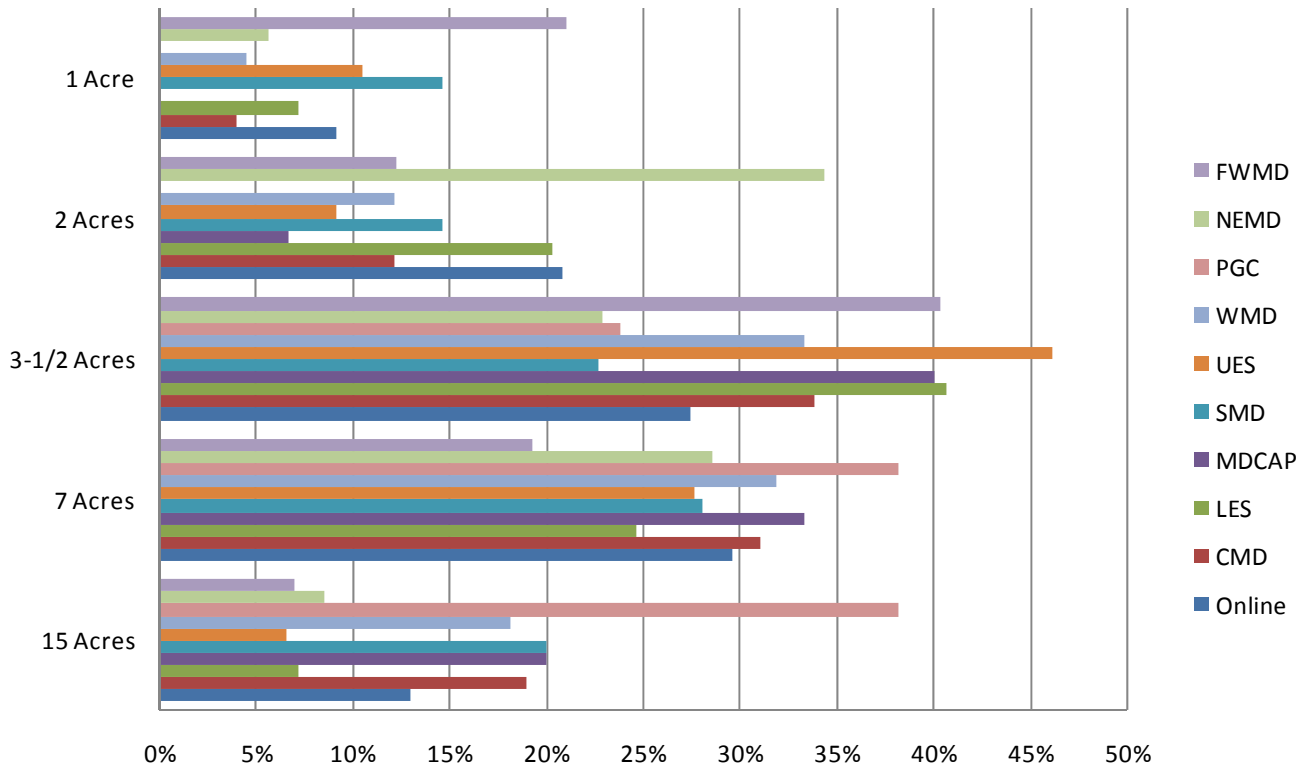
Question 1: Which best describes the home in which you live?



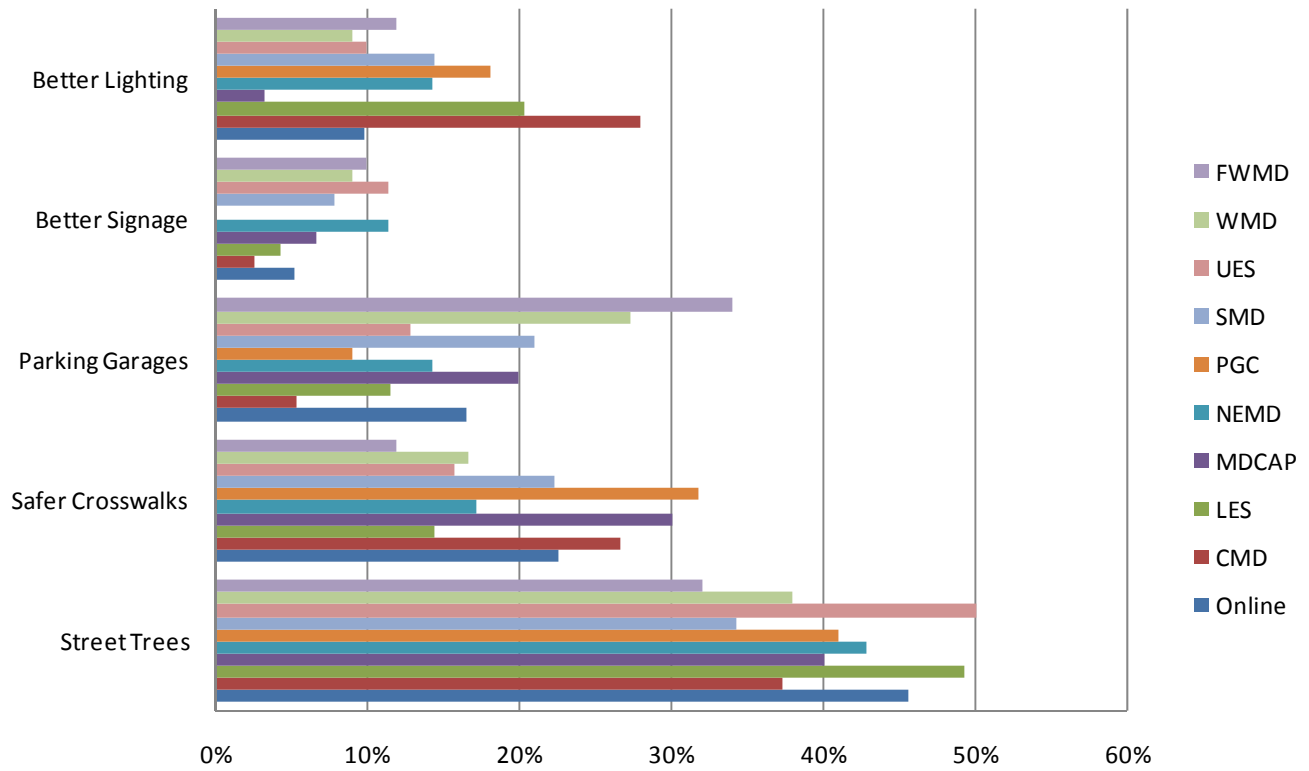
Question 2: How big is a football field?



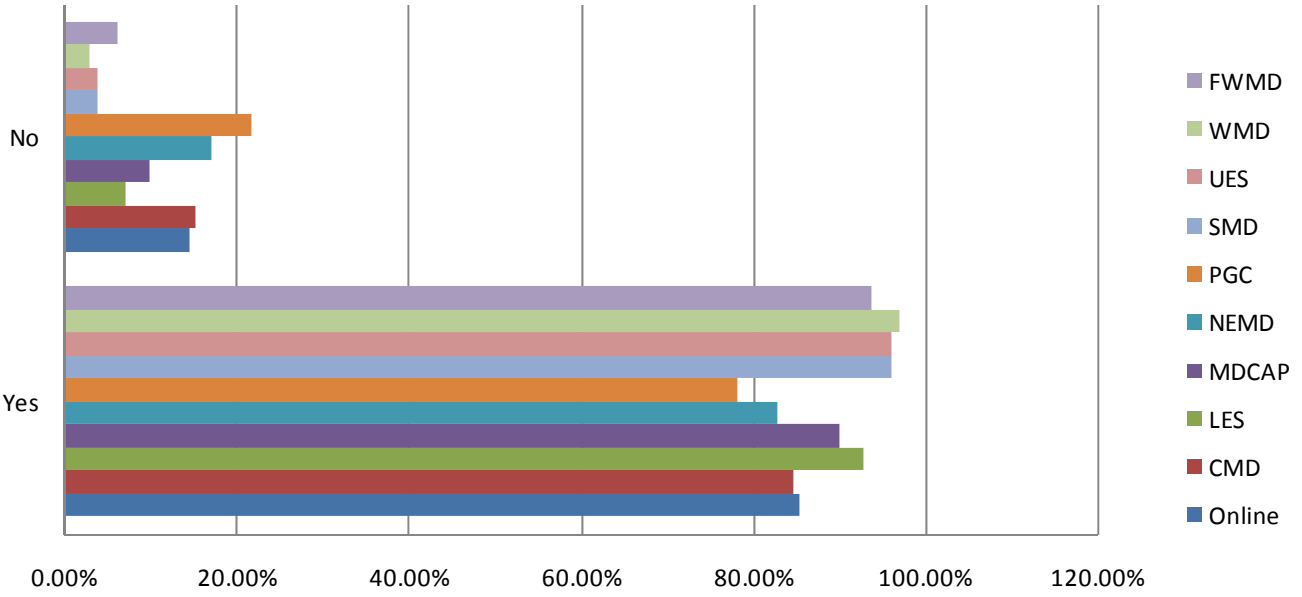
Question 3 : How many homes should be built per acre in a growth area?



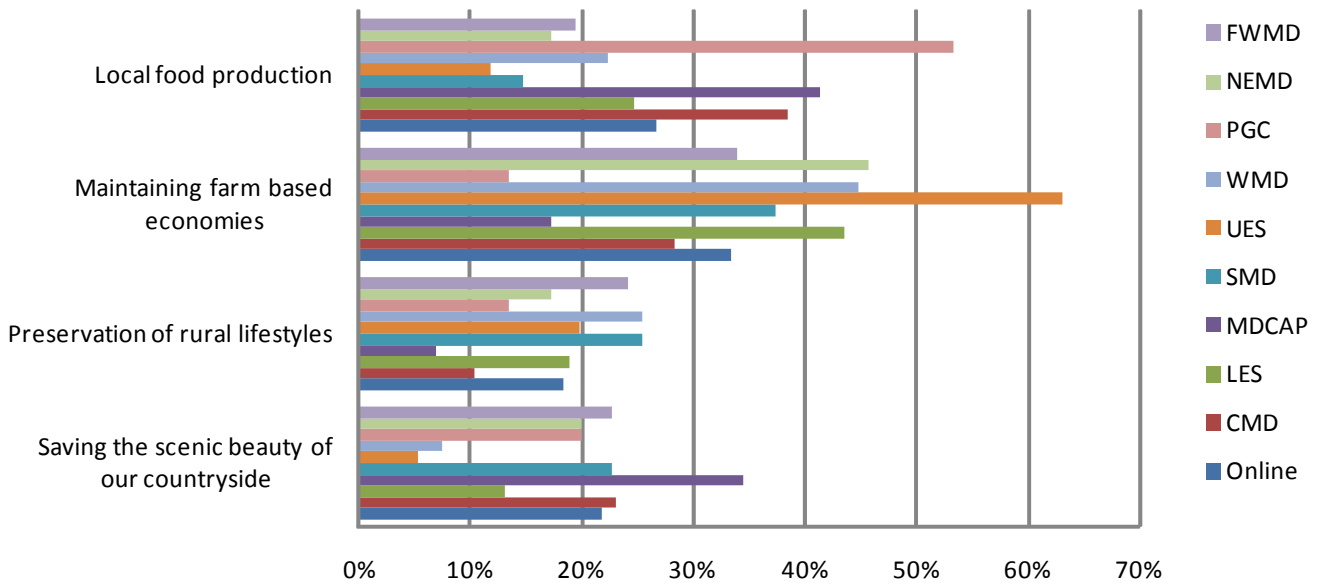
Question 4: What would be your preference to improve your shopping district?



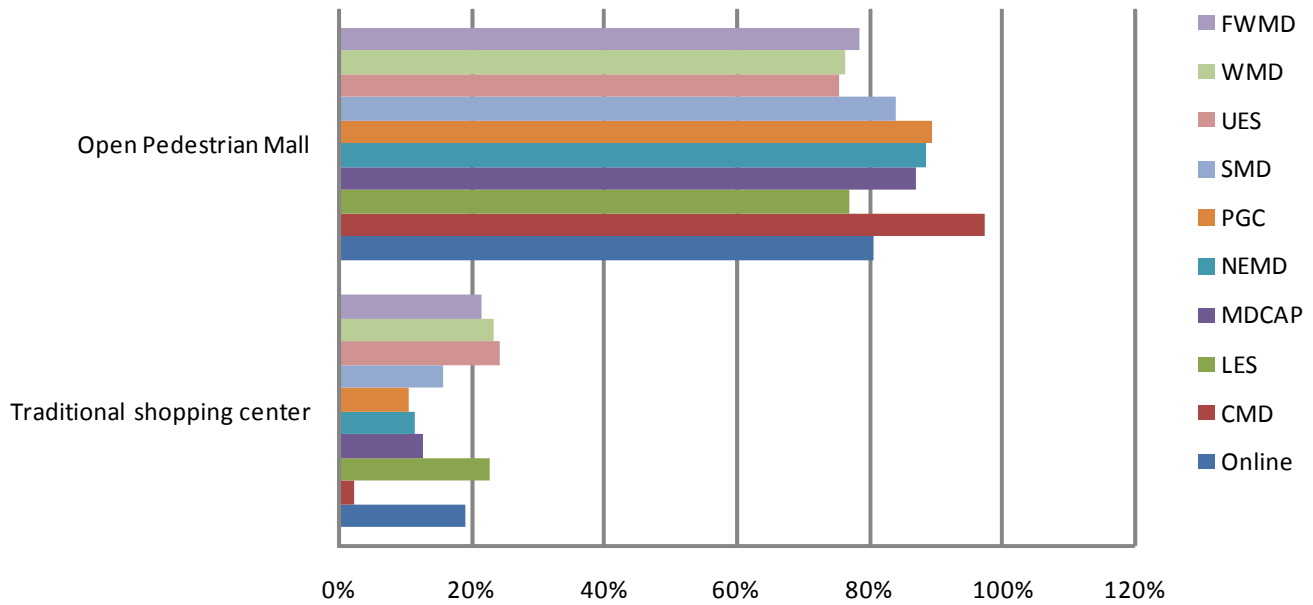
Question 5: Are green spaces located in close proximity to your community?



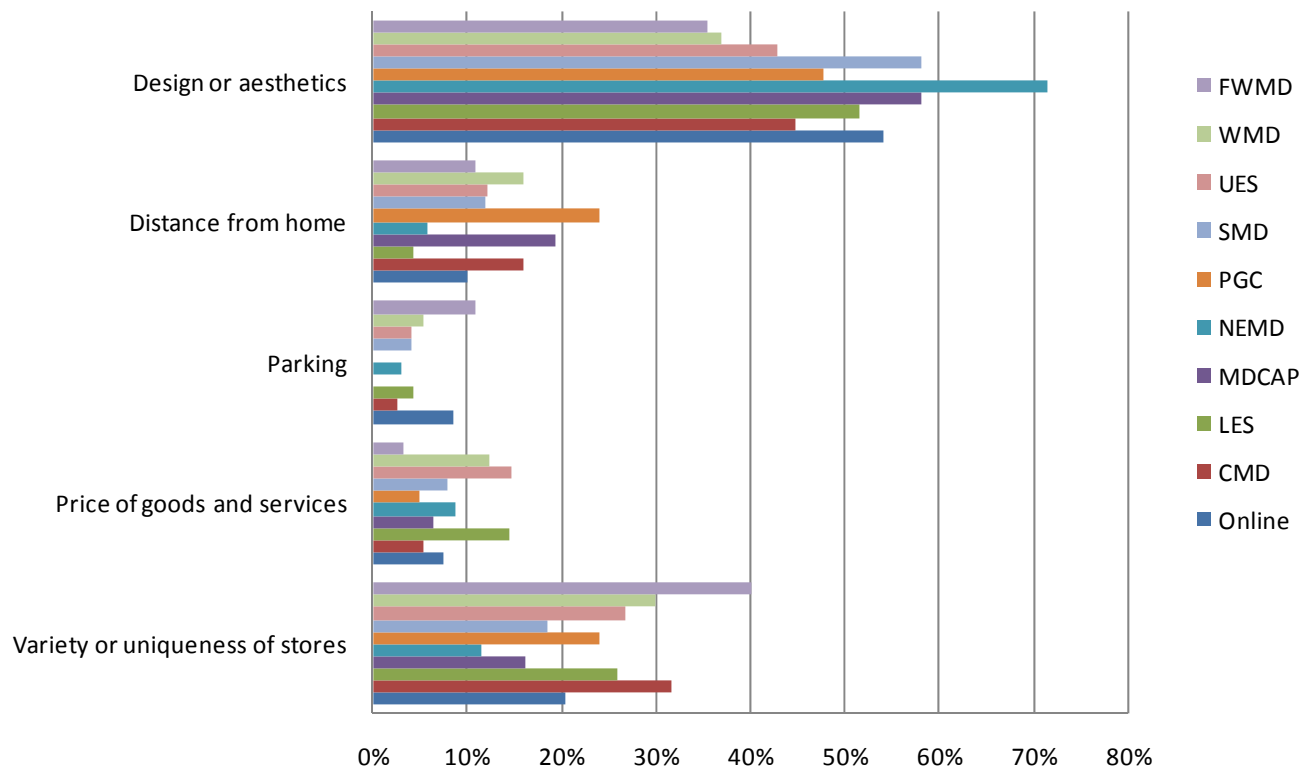
Question 6: What's most important about preserving farmland?



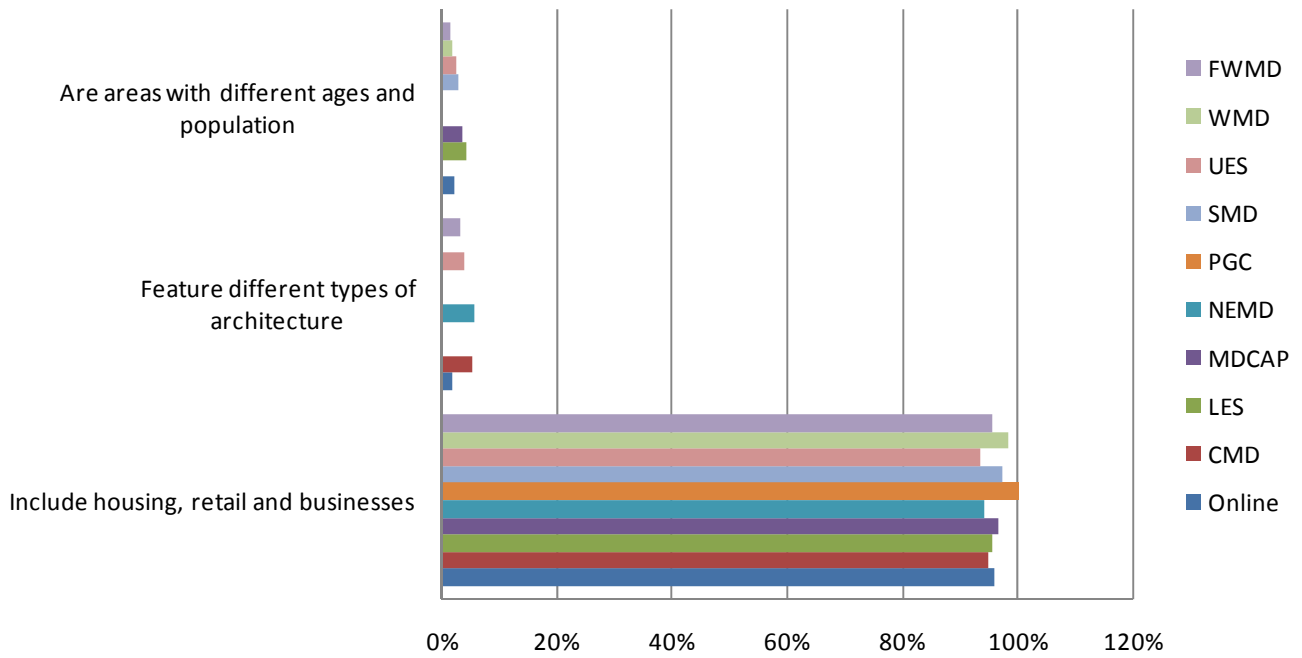
Question 7: Shopping and Amenities – Which shopping area do you prefer ?



Question 8: Regarding the previous question, what most influenced your choice?

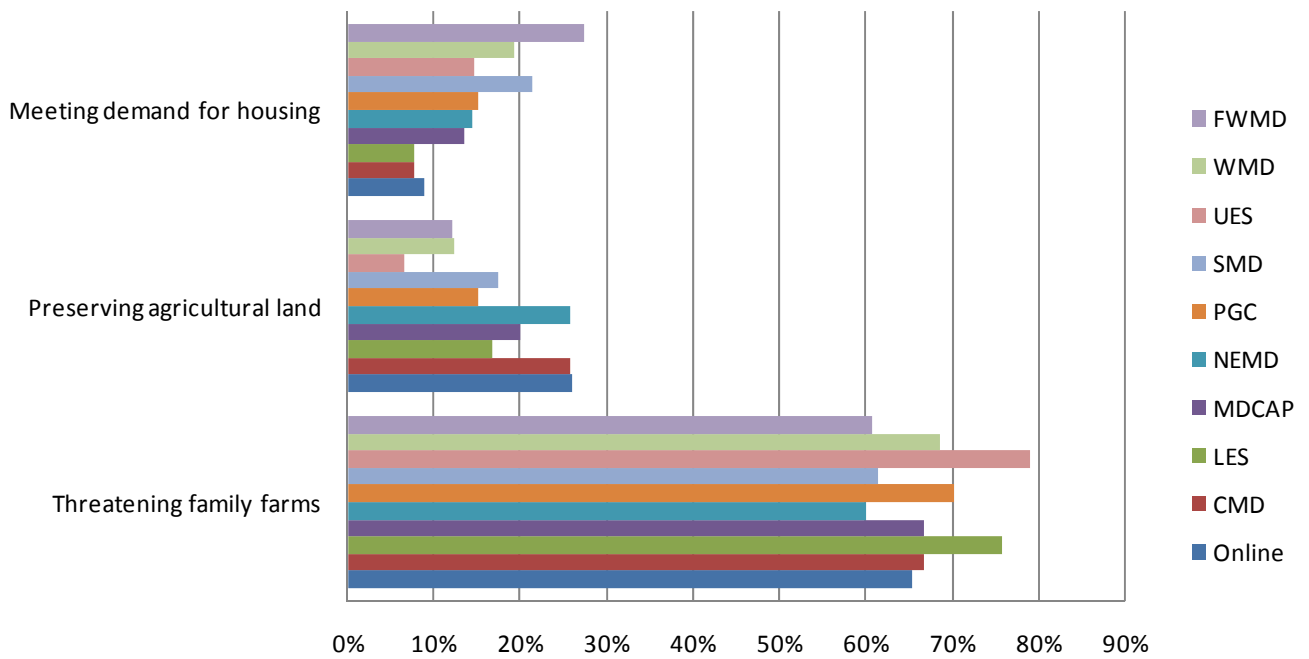


Question 9: Mixed Use Communities...

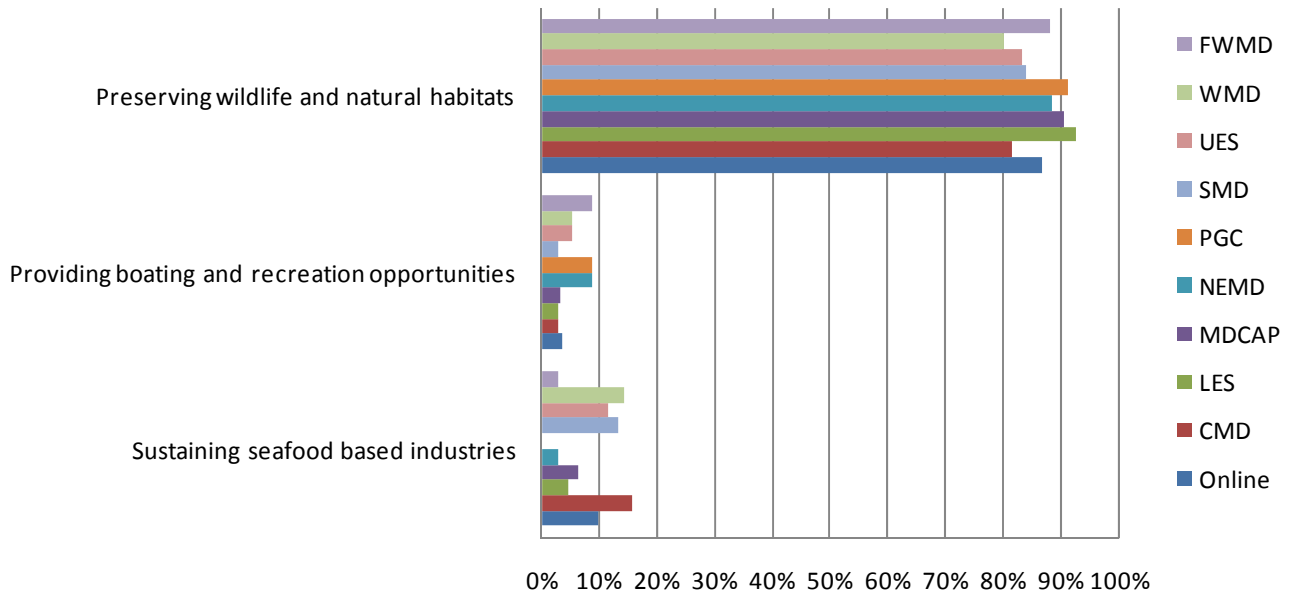




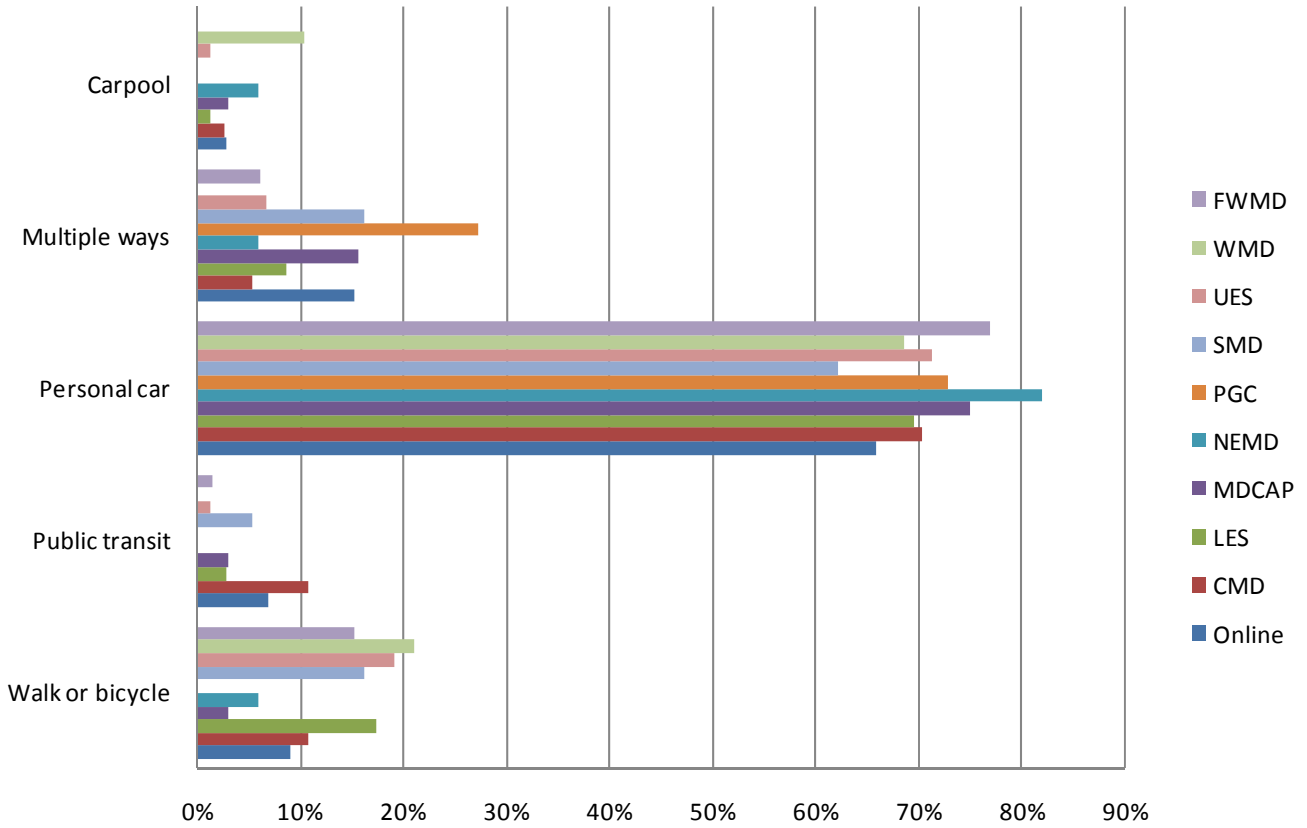
Question 10: How would you describe this picture?



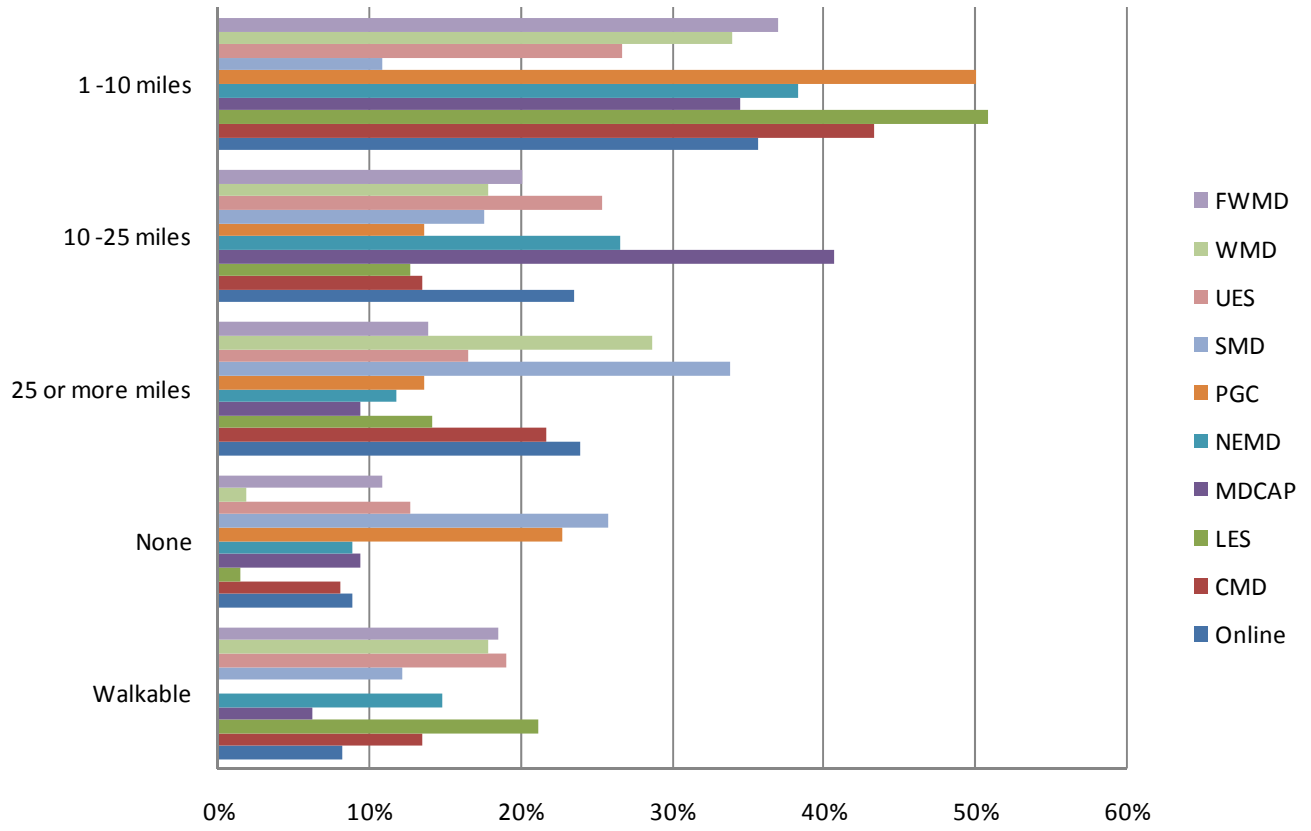
Question 11: What's most important about natural shoreline protection?



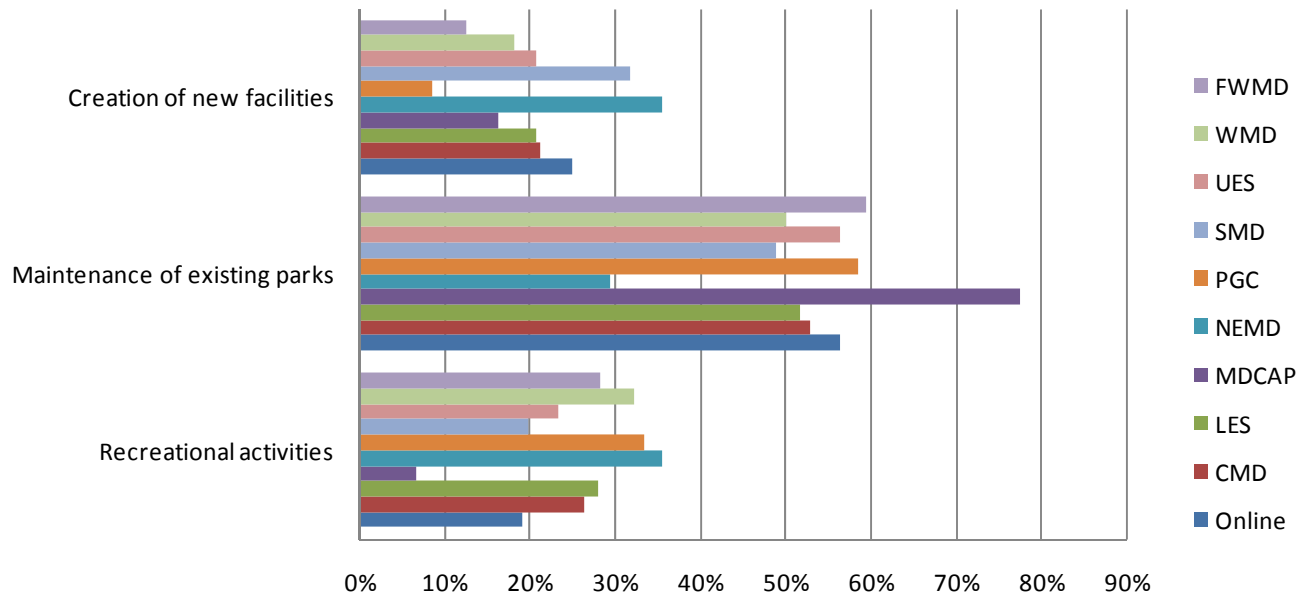
Question 12: How do you get to work?



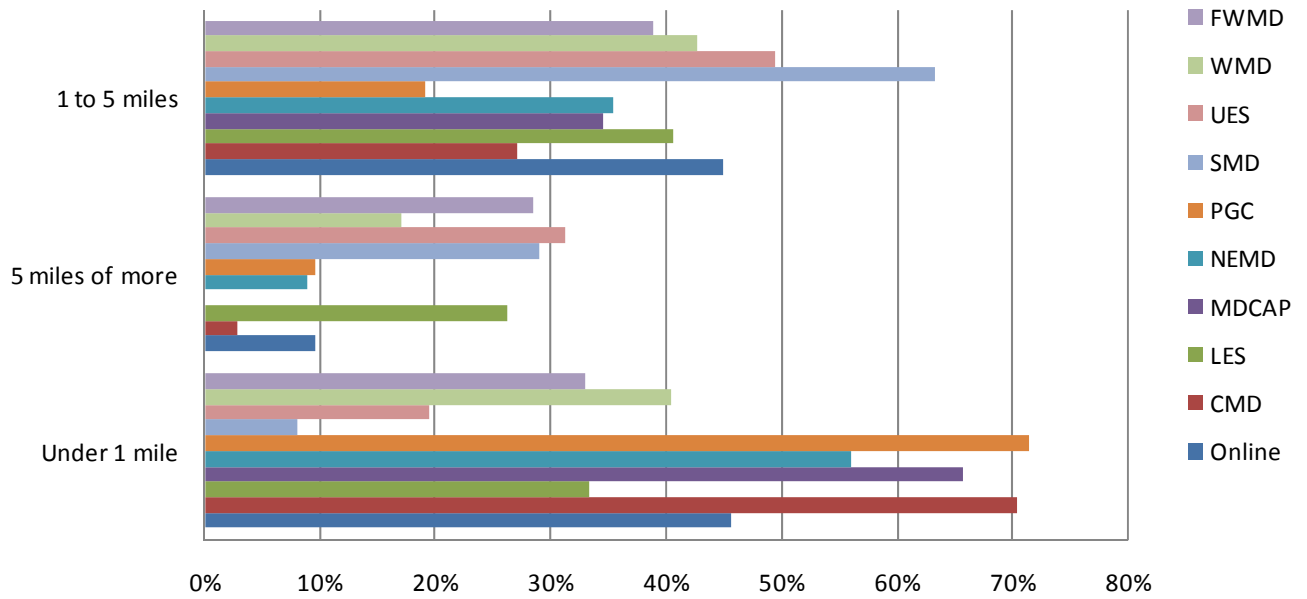
Question 13: How far is your one-way trip to work?



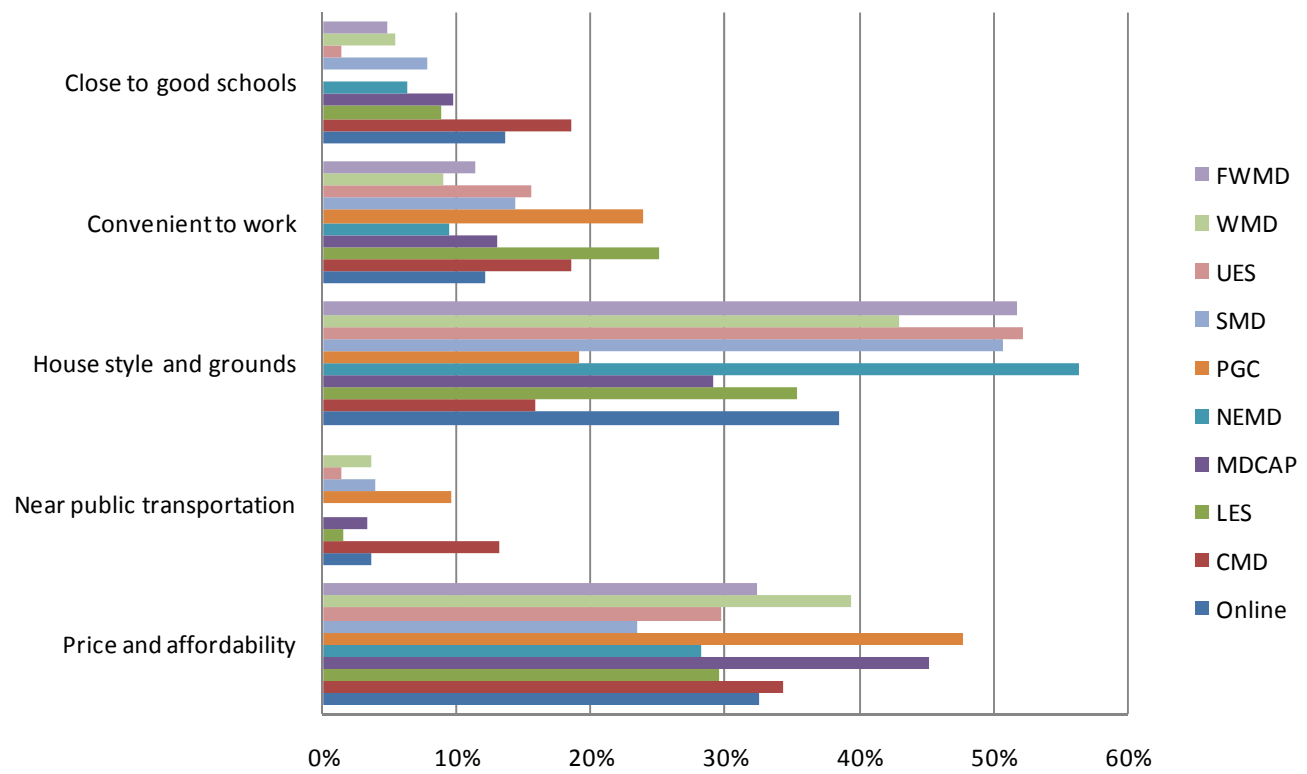
Question 14: What's most important to you about parks?



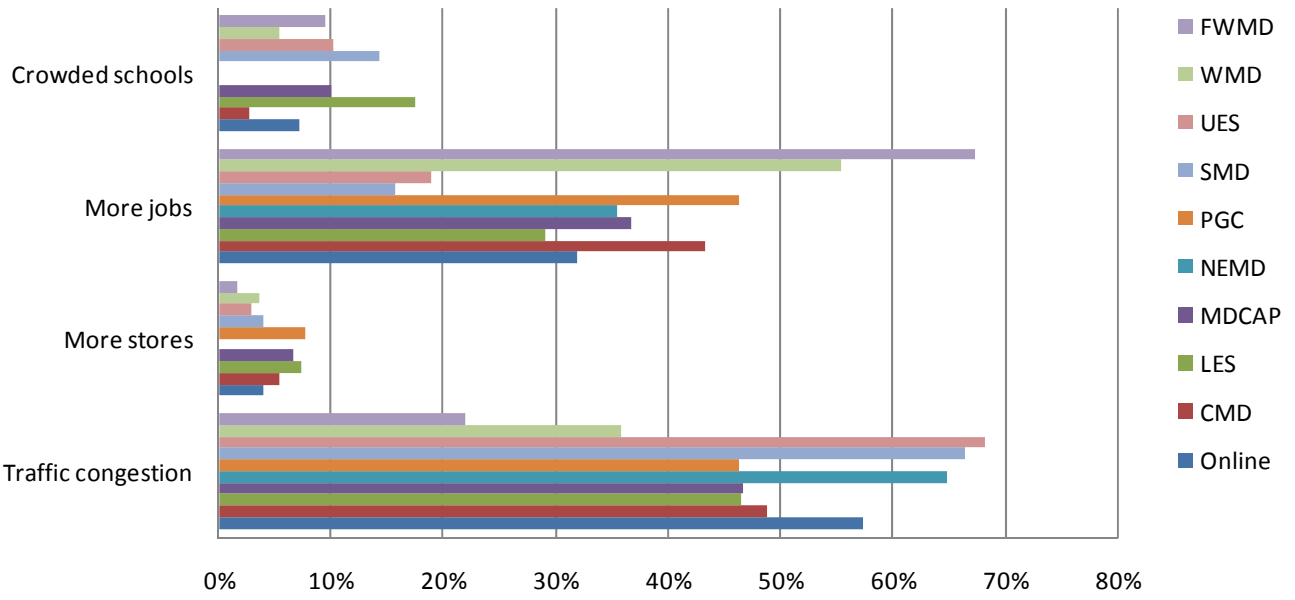
Question 15: How close is the nearest public elementary school?



Question 16: What most influenced your home choice?



Question 17: Future growth in my region will create...





Question 18: Do you think that the draft visions provide a solid foundation for moving forward with Smart Growth?

