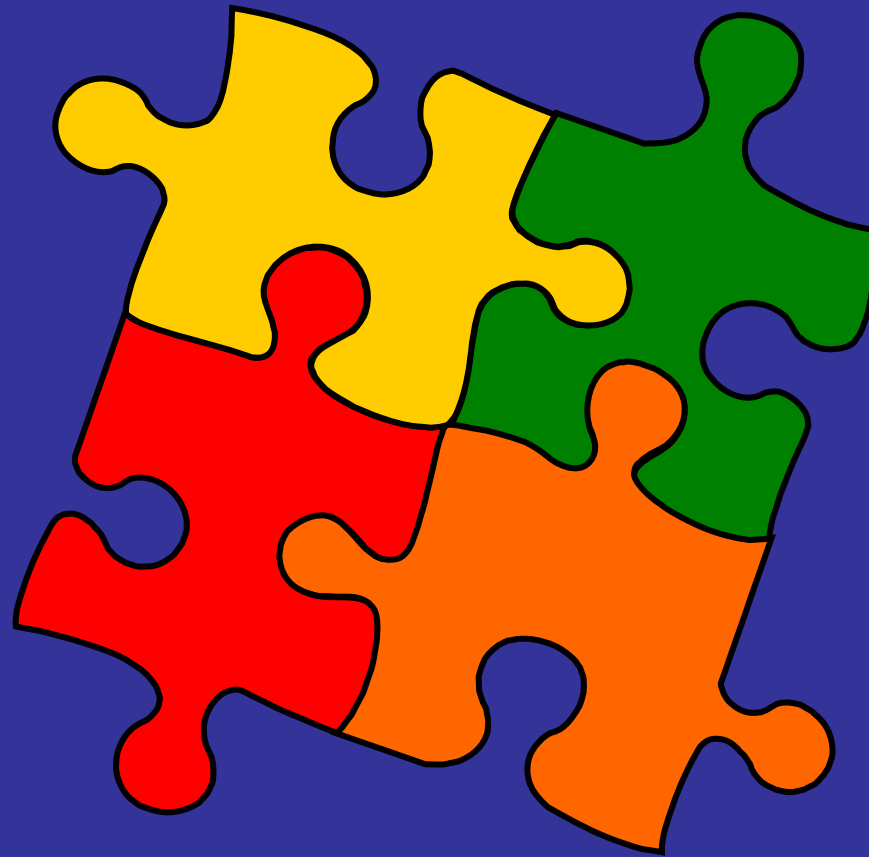


Parameters for a State Development Plan



1992 Growth Act

The Visions

- ✓ Development is concentrated in suitable areas.
- ✓ Sensitive areas are protected.
- ✓ In rural areas, growth is directed to existing population centers and resource areas are protected.
- ✓ Stewardship of the Chesapeake Bay and land is a universal ethic.
- ✓ Conservation of resources is practiced.
- ✓ To assure 1 through 5 above, economic growth is encouraged and regulatory mechanisms are addressed to achieve these visions.
- ✓ Adequate public facilities and infrastructure are available or planned in areas where growth is to occur. (2000 Session)
- ✓ Funding mechanisms are addressed to achieve these visions.

Why are we doing this?

- To help tie together the many State programs, relate them to local and regional efforts, within the structure of a strategic plan for the State.
- To help move MD forward with smart and sustainable growth.

State Development Plan

What the Law Says

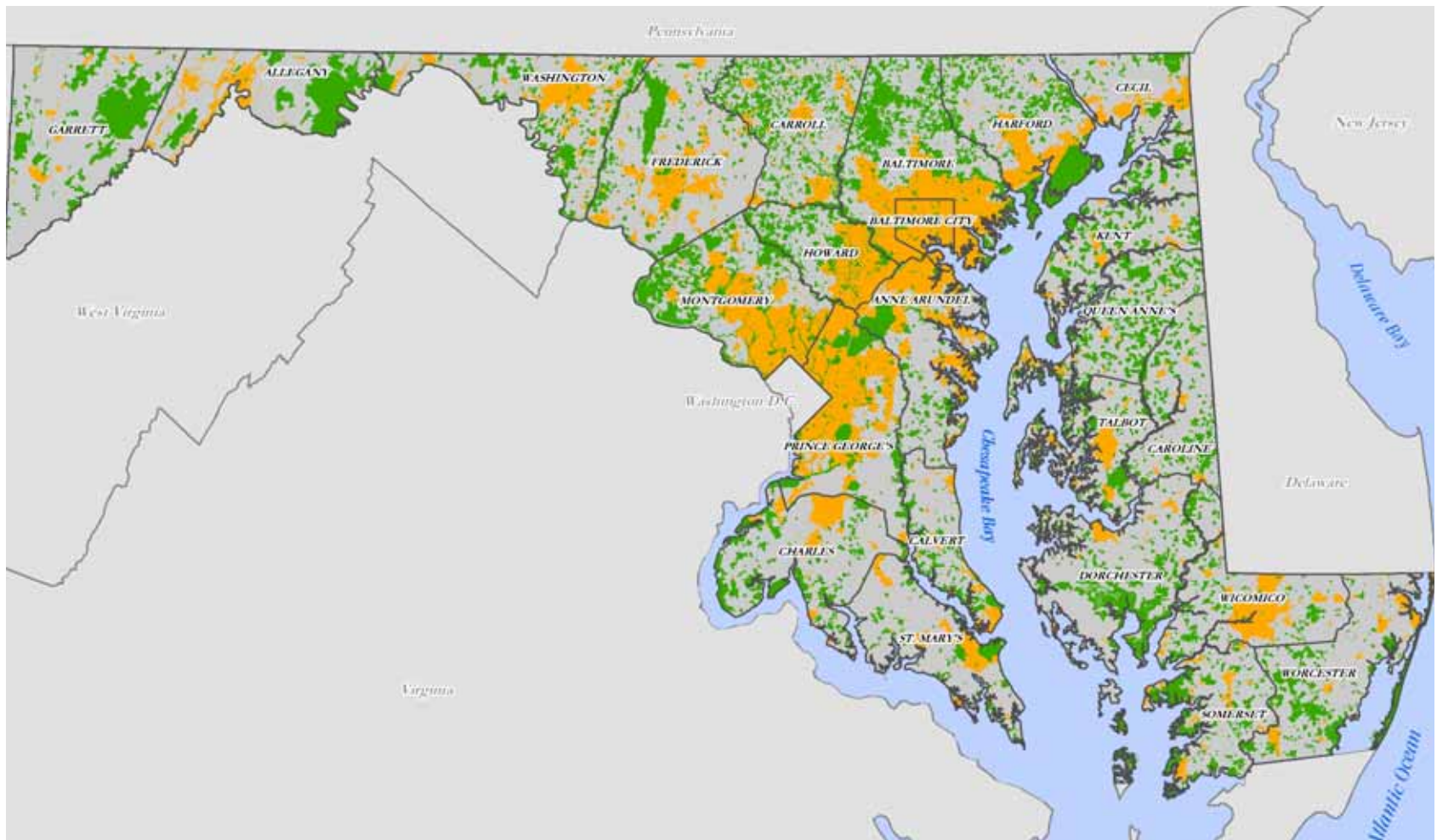
- The Department shall prepare and from time to time revise a plan or plans for development of the State. The plan or plans collectively shall be known as the State Development Plan.
- The Department shall prepare the Plan to promote the general welfare and prosperity of the people of the State through the coordinated development of the State.
- The Department shall base the Plan on studies of governmental, economic, physical, and social conditions and trends.



Plan MD:

A sustainable future for MARYLAND

“Make no little plans; they have no magic to stir men's blood...”



Outcomes



Implementation



What's in the Plan?

- Recommendations for the economic and physical development of the State.
- A statement of the objectives, standards, and principles sought to be expressed in the Plan.
- A comprehensive analysis and evaluation of the capital plans and programs of each unit of the State government.
- A review and analysis of grant to and from the State.
- Identify all areas designated by the Department as areas of critical State concern.
- Recommendations for the most desirable general pattern of land use in the State. The recommendations shall be based on the best available information concerning:
 - (1) environmental and natural factors, including climate, soil and underground conditions, topography, and water sources and bodies of water;
 - (2) present and prospective economic bases of the State;
 - (3) water and sewerage facilities;
 - (4) trends of industrial, population, or other developments;
 - (5) habits and standards of life of the people of the State; and
 - (6) the relation of land use in the State to land use in adjoining areas.
- Recommendations concerning the need for and the proposed general location of major public works and private facilities, including utilities, flood control works, water reservoirs, pollution control facilities, and military or defense installations, that are of State, as opposed to purely local or regional
- Recommend a major circulation pattern for the State, including major transportation routes and major terminals that should be used for movement within the State or for movement from and to adjoining areas.
- Contain the recommendations of the Secretary concerning any current or impending problem that may affect the State as a whole.

