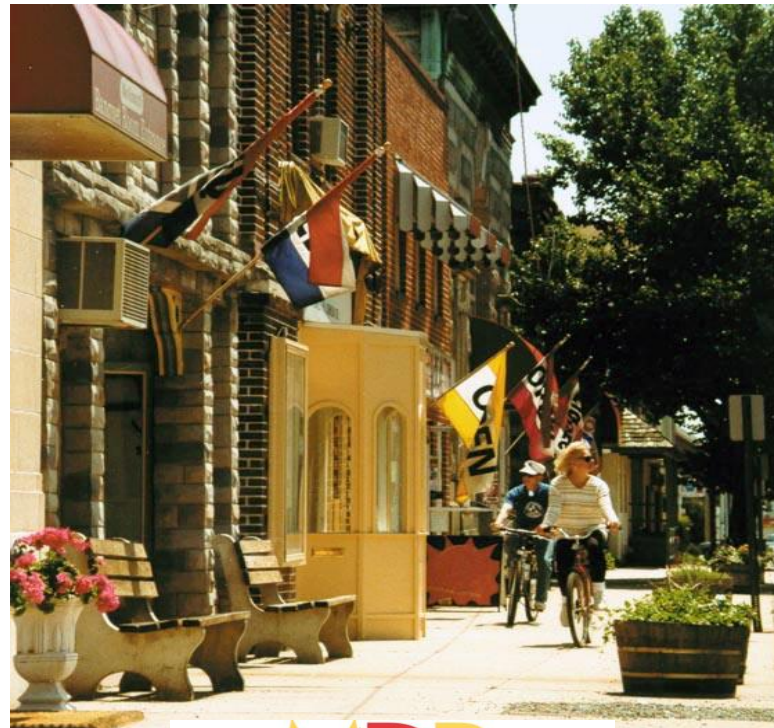


Demographic, Socioeconomic, Housing and Journey to Work Data for Maryland's Incorporated and Unincorporated Areas & Jurisdictions

2008 – 2010 Three-Year Estimates



MDP

Maryland Department of Planning



Martin O'Malley, *Governor*

Anthony Brown, *Lt. Governor*

Richard Eberhart Hall, *Secretary*

Matthew J. Power, *Deputy Secretary*

Description of the Data

What is the American Community Survey (ACS)? What are Three-Year Estimates?

The American Community Survey (ACS) is a nationwide survey designed to collect demographic, social, economic, and housing data every year. The U.S. Census Bureau releases data from the ACS in the form of both single-year and multiyear estimates. Unlike previous Census Bureau data products, the ACS is not concerned with creating population counts, but with collecting data on population characteristics. In the past, population characteristics were collected every ten years through the “long form” of the decennial Census, which was sent to a sample of the total population (approximately one in six households in 2000). The ACS replaces this form with a program that samples 250,000 unique households per month, or 3 million per year. By the end of five years, the ACS will still have a smaller sample size than the decennial Census.

This rolling sample allows population characteristics for large areas (those over 65,000 in population) to be reported yearly, instead of once every ten years under the previous “long form” system. Characteristics for areas containing between 20,000 and 65,000 persons are reported as three-year period estimates, as not enough households are sampled in one year to give reliable estimates. Characteristics for areas containing less than 20,000 persons, again due to their small size, are reported as five-year period estimates. These differences from the old system mean that ACS data is more timely, but is not possible to pinpoint a particular point in time. For more information on the ACS, how the data is collected, and how it should be used, please refer to *A Compass for Understanding and Using American Community Survey Data: What General Data Users Need to Know* (October 2008), available online from the U.S. Census Bureau at:

http://www.census.gov/acs/www/Downloads/data_documentation/Accuracy/MultiyearACSAccuracyofData2010.pdf

What is a Margin of Error (MoE)?

Because the ACS is a sample of a population, its results are subject to error. This error also existed in the previous “long form”, but due to the larger sample size it was generally not reported by the Census Bureau. Because of the methodology and the smaller sample sizes used to create the ACS, the reported data may have larger errors than experienced data users are used to seeing. The Census Bureau now reports a margin of error (MoE) based on a 90 percent confidence level that allows data users to understand just how accurate the data is and how it should be used. Generally, three-year period estimates will have a smaller MoE than one-year estimates, and five-year period estimates will have the smallest MoE. Estimates with too few sample cases to create a reliable estimate are marked with the letter “N” in the tables. For more information on this subject, please refer to *American Community Survey Multiyear Accuracy of the Data (3-year 2007-2009 and 5-year 2005-2009)*, available online from the U.S. Census Bureau at http://www.census.gov/acs/www/Downloads/data_documentation/Accuracy/MultiyearACSAccuracyofData2010.pdf.

How do Population Estimates Available in the ACS differ from those from the Population Estimates Program (PEP)?

Population totals in this report are based on the 2010 Census. The ACS does not determine the estimate of the total population of counties and incorporated areas in intercensal years. Total population estimates for these areas are based on the Census Bureau’s Population Estimates Program (PEP) and are not reported with margins of error (MoEs) as are other ACS data. The Census Bureau recommends using housing and population totals and age, sex, race, and Hispanic ethnicity estimates from the PEP for counties and total population for municipalities during the intercensal years. Geographic areas whose populations have been estimated under the PEP have “*****” in the MoE column. Data representing the various characteristics reported through the ACS are weighted to either the population count or to the PEP estimates.

What is a CDP?

CDP stands for *Census Designated Place*, defined by the Census Bureau as a “statistical entity, defined for each decennial census according to Census Bureau guidelines, comprising a densely settled concentration of population that is not within an incorporated place, but is locally identified by a name. CDPs are delineated cooperatively by State and local officials and the Census Bureau, following Census Bureau guidelines.” (<http://www.census.gov/geo/www/GARM/glosGARM.pdf>)

General Demographics

From the American Community Survey's
2008 – 2010 Three-Year Estimates

2008-2010 American Community Survey Three-Year Estimates

	Total Population	MoE* +/-	Median Age	MoE* +/-	Percent Age 65 & Over	MoE* +/-	Percent Foreign Born	MoE* +/-	Percent Born in Maryland	MoE* +/-	Percent Speak Language Other than English at	MoE* +/-	Percent Speak English "Less than Very Well"	MoE* +/-
<u>Places over 20,000 Population</u>														
Maryland	5,733,779	*****	37.8	0.1	12.1	0.1	13.5	0.1	47.5	0.2	16.2	0.2	6.4	0.1
Annapolis city (Anne Arundel)	38,094	41	39.3	2.7	15.1	1.5	16.7	2.6	44.9	4.0	N	N	N	N
Arbutus CDP (Baltimore)	20,084	1,899	34.2	2.8	12.0	2.2	8.9	2.5	70.7	3.7	N	N	N	N
Arnold CDP (Anne Arundel)	21,861	1,908	42.1	2.5	11.6	2.3	7.2	3.0	48.9	3.7	N	N	N	N
Aspen Hill CDP (Montgomery)	48,087	3,259	38.1	1.9	14.0	1.6	34.3	2.8	25.4	2.4	43.4	3.8	18.6	2.5
Ballenger Creek CDP (Frederick)	20,114	1,604	31.8	1.4	5.6	1.5	14.9	4.5	47.9	4.6	N	N	N	N
Baltimore city (Baltimore city)	620,425	*****	34.4	0.1	11.7	0.1	7.2	0.4	67.7	0.6	9.1	0.5	3.7	0.4
Bel Air North CDP (Harford)	29,751	1,766	39.3	2.2	10.6	2.1	5.0	1.7	66.3	3.4	N	N	N	N
Bel Air South CDP (Harford)	45,354	2,178	37.8	1.3	11.3	1.3	6.0	1.7	62.9	3.0	N	N	N	N
Bethesda CDP (Montgomery)	58,495	2,244	41.5	1.3	16.8	1.1	22.9	1.9	11.3	1.5	25.4	2.1	6.8	1.3
Bowie city (Prince George's)	54,375	81	38.9	1.5	10.5	0.7	12.3	1.8	29.0	2.0	12.2	2.2	4.2	1.1
Carney CDP (Baltimore)	26,344	1,759	40.0	3.5	18.1	1.9	9.1	2.9	68.7	4.0	N	N	N	N
Catonsville CDP (Baltimore)	41,497	2,694	42.5	2.5	21.4	2.8	7.3	1.8	64.7	2.7	10.6	2.3	3.5	1.3
Chillum CDP (Prince George's)	36,548	3,562	31.5	1.3	10.5	2.5	42.2	4.1	14.7	1.9	47.4	5.7	25.1	4.1
Clinton CDP (Prince George's)	37,948	3,222	39.6	2.0	11.6	1.7	6.5	1.7	24.4	3.4	N	N	N	N
College Park city (Prince George's)	30,042	27	20.6	0.5	6.2	0.8	17.9	3.1	34.8	2.8	27.1	2.8	5.2	1.8
Columbia CDP (Howard)	98,808	3,287	38.4	0.9	11.3	0.9	17.9	1.7	33.9	1.8	22.4	2.4	8.2	1.4
Crofton CDP (Anne Arundel)	27,299	1,981	33.9	2.1	8.2	2.0	8.0	2.2	40.1	3.7	N	N	N	N
Cumberland city (Allegany)	20,888	38	41.3	2.0	20.6	1.7	1.7	0.9	71.8	3.5	N	N	N	N
Dundalk CDP (Baltimore)	62,430	3,230	38.2	2.4	14.2	1.5	6.3	1.5	76.3	2.2	9	1.8	4.2	1.4
Edgewood CDP (Harford)	26,282	2,286	32.3	2.7	7.8	1.9	8.8	2.9	63.9	5.0	N	N	N	N
Eldersburg CDP (Carroll)	30,477	1,751	40.8	1.5	13.5	1.7	4.0	1.1	63.7	2.7	N	N	N	N
Ellicott City CDP (Howard)	67,223	2,542	38.9	1.3	10.7	1.2	21.7	2.0	42.5	2.1	27.7	2.7	10.8	1.8
Essex CDP (Baltimore)	38,816	2,929	36.7	2.2	11.3	1.7	9.7	2.9	71.2	3.6	N	N	N	N
Fairland CDP (Montgomery)	24,387	1,966	33.3	2.8	7.9	2.1	36.0	4.5	27.8	3.7	40.1	5.8	12.5	2.9
Fort Washington CDP (Prince George's)	25,090	2,647	42.3	3.1	14.6	2.6	13.7	2.9	15.8	3.6	16.5	3.5	4.4	1.6

* MoE: Margin of Error;

^ Homeowners with a mortgage; For more information visit our website at: http://planning.maryland.gov/msdc/S7_ACS.shtml

Revised December, 2011

2008-2010 American Community Survey Three-Year Estimates

	Total Population	MoE* +/-	Median Age	MoE* +/-	Percent Age 65 & Over	MoE* +/-	Percent Foreign Born	MoE* +/-	Percent Born in Maryland	MoE* +/-	Percent Speak Language Other than English at	MoE* +/-	Percent Speak English "Less than Very Well"	MoE* +/-
Frederick city (Frederick)	64,535	50	34.2	1.1	10.5	0.8	16.6	2.2	44.1	2.5	19.2	2.4	7.6	1.7
Gaithersburg city (Montgomery)	59,039	51	35.2	1.1	9.7	0.9	40.7	2.9	24.4	2.3	48.8	3.1	21.9	2.6
Germantown CDP (Montgomery)	83,659	4,243	33.4	1.1	5.0	0.8	35.1	2.3	28.5	1.6	43.8	2.9	18.7	2.1
Glen Burnie CDP (Anne Arundel)	64,031	3,563	38.6	1.9	11.4	1.4	8.9	1.6	60.1	2.4	10.9	2	5.1	1.3
Greenbelt city (Prince George's)	22,881	35	34.6	2.4	7.7	1.4	26.1	4.3	25.3	3.4	N	N	N	N
Hagerstown city (Washington)	39,653	32	35.5	2.0	13.3	0.9	6.4	1.5	61.5	3.0	N	N	N	N
Ilchester CDP (Howard)	21,798	1,784	36.0	1.5	6.5	1.6	16.3	3.8	47.7	4.5	20.5	4.8	8.2	3.1
Landover CDP (Prince George's)	24,013	2,406	31.6	2.3	5.9	1.4	15.0	3.4	22.9	3.2	N	N	N	N
Laurel city (Prince George's)	24,730	34	33.9	2.7	8.2	1.1	27.5	4.1	27.6	3.0	30.6	4.6	13.0	3.3
Lochearn CDP (Baltimore)	23,517	1,907	42.3	3.7	16.3	2.6	9.9	3.3	64.0	4.0	N	N	N	N
Middle River CDP (Baltimore)	22,638	2,310	38.1	2.5	13.6	2.1	8.4	3.2	72.8	3.9	N	N	N	N
Milford Mill CDP (Baltimore)	28,922	2,228	36.1	2.0	9.0	1.5	12.4	2.6	63.0	4.2	N	N	N	N
Montgomery Village CDP (Montgomery)	31,313	2,208	34.5	1.9	8.2	1.4	32.6	3.3	31.0	3.0	40.5	4.3	19.0	3.1
North Bethesda CDP (Montgomery)	39,502	2,247	43.1	2.2	19.9	2.3	33.5	2.9	17.7	2.4	36	3.5	12.3	2.2
North Potomac CDP (Montgomery)	23,463	1,409	40.7	1.7	7.0	1.3	35.5	2.7	22.6	3.1	45.7	3.8	13.5	2.5
Odenton CDP (Anne Arundel)	37,206	2,137	35.3	1.7	7.0	1.2	9.9	2.1	40.3	3.5	N	N	N	N
Olney CDP (Montgomery)	33,913	1,815	40.9	2.5	9.0	1.7	18.2	2.4	33.5	3.0	24.2	3.5	8.6	1.8
Owings Mills CDP (Baltimore)	32,679	2,625	32.7	1.4	7.5	1.3	17.3	2.9	49.4	3.8	22.2	4	7.9	2.2
Parkville CDP (Baltimore)	29,981	2,384	35.8	1.8	13.5	1.9	8.0	2.7	73.7	3.7	N	N	N	N
Pasadena CDP (Anne Arundel)	23,030	2,149	37.7	3.1	8.1	2.0	3.0	1.5	72.1	4.2	N	N	N	N
Perry Hall CDP (Baltimore)	31,150	2,384	37.4	2.9	11.8	1.6	10.9	2.4	69.7	3.0	14.9	3	5.4	1.6
Pikesville CDP (Baltimore)	29,990	1,571	47.6	3.0	25.0	2.5	21.6	3.3	52.2	3.4	23	3.4	11.2	2.7
Potomac CDP (Montgomery)	43,853	2,175	46.1	1.6	17.4	1.9	28.6	2.5	15.9	2.1	34.4	3.3	8.7	1.9
Randallstown CDP (Baltimore)	34,093	2,382	41.8	2.7	14.2	1.9	8.7	2.5	64.0	3.0	N	N	N	N
Reisterstown CDP (Baltimore)	27,048	2,299	35.5	2.5	10.5	2.3	23.7	4.2	48.9	3.8	28.4	4.7	14.1	3.3
Rockville city (Montgomery)	59,792	35	39.5	0.9	14.2	0.8	35.6	1.7	21.7	1.4	42.3	2	17.2	1.8

* MoE: Margin of Error;

^ Homeowners with a mortgage; For more information visit our website at: http://planning.maryland.gov/msdc/S7_ACS.shtml

Revised December, 2011

2008-2010 American Community Survey Three-Year Estimates

	Total Population	MoE* +/-	Median Age	MoE* +/-	Percent Age 65 & Over	MoE* +/-	Percent Foreign Born	MoE* +/-	Percent Born in Maryland	MoE* +/-	Percent Speak Language Other than English at	MoE* +/-	Percent Speak English "Less than Very Well"	MoE* +/-
Salisbury city (Wicomico)	29,908	35	29.3	1.9	12.0	1.1	10.5	3.3	58.8	3.8	N	N	N	N
Scaggsville CDP (Howard)	23,506	1,864	36.2	1.9	6.2	1.6	20.2	3.7	38.1	3.6	24.4	5.1	7.8	2.2
Severn CDP (Anne Arundel)	43,389	2,894	35.0	1.5	8.7	1.2	13.0	2.3	46.5	3.4	N	N	N	N
Severna Park CDP (Anne Arundel)	36,361	2,000	44.2	1.1	15.3	1.9	5.2	1.4	49.4	3.0	N	N	N	N
Silver Spring CDP (Montgomery)	72,701	3,648	33.0	1.1	8.4	1.0	38.0	2.3	17.9	1.6	45.5	2.5	21.8	2.4
South Laurel CDP (Prince George's)	26,513	2,680	31.6	3.6	7.2	1.6	23.6	4.3	30.2	3.5	N	N	N	N
Suitland CDP (Prince George's)	24,468	2,334	30.3	2.0	6.5	1.6	6.5	3.4	21.5	3.8	N	N	N	N
Towson CDP (Baltimore)	53,824	2,379	34.3	1.7	16.5	1.4	9.7	1.8	53.2	2.5	12.4	2.2	3.8	1.4
Waldorf CDP (Charles)	67,640	2,691	33.2	0.8	6.2	0.8	6.7	1.5	34.4	2.5	N	N	N	N
Wheaton CDP (Montgomery)	45,980	3,714	35.5	1.5	10.3	1.5	44.2	2.8	23.8	2.2	58.8	3.9	34.1	3.1
Woodlawn CDP (Baltimore)	40,525	3,299	35.7	2.3	9.9	1.7	13.3	3.1	61.9	3.6	N	N	N	N
<u>Jurisdictions</u>														
Maryland	5,733,779	*****	37.8	0.1	12.1	0.1	13.5	0.1	47.5	0.2	16.2	0.2	6.4	0.1
Allegany County, Maryland	74,920		40.9	0.4	18	0.2	1.8	0.6	72.5	1.7	3.8	0.7	0.8	0.2
Anne Arundel County, Maryland	532,299		38.3	0.2	11.7	0.1	8.1	0.4	50.7	0.9	10.3	0.5	3.8	0.3
Baltimore County, Maryland	802,056		39	0.2	14.6	0.1	10.7	0.4	64.7	0.5	12.8	0.5	4.9	0.3
Calvert County, Maryland	88,323		39.3	0.5	10.5	0.1	3.6	0.7	49.9	1.6	4.9	0.9	1.1	0.3
Caroline County, Maryland	33,030		37.9	1	12.9	0.2	4.0	0.7	67.7	2.7	N	N	N	N
Carroll County, Maryland	167,234		40.7	0.3	12.8	0.1	3.4	0.4	66.6	1.2	4.7	0.5	1.4	0.4
Cecil County, Maryland	100,749		38.7	0.5	11.5	0.2	3.0	0.7	45.6	2.4	6.7	0.8	1.3	0.4
Charles County, Maryland	145,224		36.9	0.3	9.1	0.1	5.4	0.8	41.0	1.6	6.8	1.0	2.1	0.6
Dorchester County, Maryland	32,529		43.2	0.7	17.5	0.3	3.1	0.9	73.6	2.1	N	N	N	N
Frederick County, Maryland	231,450		38.1	0.3	10.8	0.1	9.2	0.7	49.7	1.2	11.6	0.8	3.6	0.5
Garrett County, Maryland	30,143		42.4	0.7	17.1	0.1	0.8	0.4	62.7	2.8	N	N	N	N

* MoE: Margin of Error;

^ Homeowners with a mortgage; For more information visit our website at: http://planning.maryland.gov/msdc/S7_ACS.shtml

Revised December, 2011

2008-2010 American Community Survey Three-Year Estimates

	Total Population	MoE* +/-	Median Age	MoE* +/-	Percent Age 65 & Over	MoE* +/-	Percent Foreign Born	MoE* +/-	Percent Born in Maryland	MoE* +/-	Percent Speak Language Other than English at	MoE* +/-	Percent Speak English "Less than Very Well"	MoE* +/-
Harford County, Maryland	243,880		39.4	0.3	12.2	0.1	4.9	0.5	65.5	1.2	7.9	0.8	2.4	0.4
Howard County, Maryland	283,281		37.9	0.2	9.8	0.1	17.3	0.6	40.7	1.0	22.3	0.9	8.0	0.6
Kent County, Maryland	20,168		45.6	0.5	21	0.9	3.6	1.8	58.0	3.6	N	N	N	N
Montgomery County, Maryland	959,321		38.3	0.2	12.2	0.1	31.7	0.5	23.7	0.4	38.7	0.5	15.9	0.4
Prince George's County, Maryland	857,200		34.8	0.1	9.2	0.1	19.6	0.5	23.7	0.5	19.0	0.5	8.3	0.4
Queen Anne's County, Maryland	47,498		41.7	0.8	14.2	0.3	3.5	0.8	61.9	2.4	N	N	N	N
St. Mary's County, Maryland	103,660		36	0.3	10	0.1	3.3	0.5	48.1	1.9	6.0	0.8	1.6	0.4
Somerset County, Maryland	26,460		36.4	0.7	13.7	0.2	4.4	1.5	67.0	2.9	N	N	N	N
Talbot County, Maryland	37,546		46.8	0.3	23.4	0.2	4.6	1.0	57.2	2.6	N	N	N	N
Washington County, Maryland	147,062		39.6	0.3	14.3	0.2	4.0	0.6	63.9	1.3	6.8	0.6	2.3	0.4
Wicomico County, Maryland	98,008		35.5	0.4	12.8	0.1	6.8	1.0	60.8	2.0	9.6	1.1	4.6	1.0
Worcester County, Maryland	51,313		47.8	0.5	23	0.3	4.7	1.2	57.1	2.3	N	N	N	N
Baltimore city, Maryland	620,425		34.4	0.1	11.7	0.1	7.2	0.4	67.7	0.6	9.1	0.5	3.7	0.4

* MoE: Margin of Error;

^ Homeowners with a mortgage; For more information visit our website at: http://planning.maryland.gov/msdc/S7_ACS.shtml

Revised December, 2011

Socioeconomic Characteristics

From the American Community Survey's
2008 – 2010 Three-Year Estimates

2008-2010 American Community Survey Three-Year Estimates

	Percent Population 25+ w/ High School Degree		Percent Population 25+ w/ Bachelor's Degree		Percent Population 25+ w/ Advanced Degree		Percent in Labor Force	MoE* +/-	Median House- hold income	MoE* +/-	Per Capita income	MoE* +/-	Pct of Persons Below Poverty Level	
	MoE* +/-	MoE* +/-	MoE* +/-	MoE* +/-	MoE* +/-	MoE* +/-							MoE* +/-	
<u>Places over 20,000 Population</u>														
Maryland	87.9	0.2	35.6	0.2	15.9	0.2	70.0	0.2	\$70,017	\$425	\$34,469	\$166	9.1	0.2
Annapolis city (Anne Arundel)	86.7	2.2	43.3	3.8	20.0	2.6	69.4	4.7	\$67,394	\$7,123	\$39,909	\$3,329	11.9	3.3
Arbutus CDP (Baltimore)	84.6	3.6	27.0	3.8	8.5	2.3	74.8	3.2	\$59,547	\$6,446	\$27,513	\$2,209	13.5	4.4
Arnold CDP (Anne Arundel)	96.0	2.0	53.4	4.1	21.7	3.3	75.3	2.9	\$98,641	\$7,085	\$45,691	\$3,625	1.5	1.0
Aspen Hill CDP (Montgomery)	83.2	2.9	40.4	3.0	17.9	2.1	72.9	2.2	\$70,827	\$4,746	\$33,266	\$2,171	9.2	2.7
Ballenger Creek CDP (Frederick)	88.4	3.9	35.4	5.2	12.2	3.4	N	N	\$74,361	\$7,614	\$30,976	\$2,898	4.5	2.4
Baltimore city (Baltimore city)	78.3	0.6	25.2	0.6	11.6	0.5	62.3	0.6	\$39,113	\$871	\$22,975	\$442	22.7	0.9
Bel Air North CDP (Harford)	94.3	1.9	41.1	4.2	15.5	2.4	72.9	2.8	\$92,267	\$7,037	\$35,136	\$2,410	2.1	1.1
Bel Air South CDP (Harford)	94.6	1.4	36.6	2.7	14.4	1.8	74.1	2.0	\$82,301	\$4,679	\$37,305	\$2,718	4.3	2.2
Bethesda CDP (Montgomery)	97.8	0.7	84.1	1.4	52.9	2.1	71.4	1.6	\$135,075	\$8,078	\$82,138	\$4,567	2.8	0.6
Bowie city (Prince George's)	93.7	1.3	45.5	2.8	19.8	2.2	76.2	1.8	\$101,082	\$2,241	\$40,691	\$1,559	4.5	1.9
Carney CDP (Baltimore)	92.5	1.9	32.5	3.3	11.8	2.0	69.5	2.5	\$60,480	\$3,626	\$32,179	\$2,101	4.4	1.8
Catonsville CDP (Baltimore)	92.4	1.5	41.0	3.1	18.9	2.0	59.2	3.5	\$66,490	\$5,267	\$32,550	\$2,163	7.6	2.6
Chillum CDP (Prince George's)	68.7	4.4	18.0	3.4	6.7	1.7	74.4	3.9	\$53,538	\$5,337	\$20,825	\$1,632	17.4	4.3
Clinton CDP (Prince George's)	90.0	2.2	24.1	3.3	8.7	1.7	70.9	3.1	\$94,306	\$6,228	\$35,722	\$2,733	5.7	3.0
College Park city (Prince George's)	87.9	3.8	49.0	6.1	28.5	5.8	53.2	4.2	\$61,222	\$3,614	\$18,119	\$1,822	27.2	4.3
Columbia CDP (Howard)	93.9	1.2	60.2	2.4	30.2	2.0	74.6	1.5	\$93,888	\$3,807	\$44,258	\$1,776	6.3	1.2
Crofton CDP (Anne Arundel)	96.2	1.3	52.3	4.0	19.3	2.3	79.3	3.2	\$100,420	\$5,283	\$42,266	\$2,305	2.3	1.3
Cumberland city (Allegany)	88.2	2.5	16.1	2.9	6.5	1.9	56.9	3.3	\$32,072	\$4,118	\$21,554	\$1,779	17.6	4.1
Dundalk CDP (Baltimore)	79.8	1.9	10.0	1.5	2.8	0.7	63.7	2.2	\$47,455	\$3,573	\$22,691	\$1,111	13.9	2.1
Edgewood CDP (Harford)	86.8	2.8	20.4	3.8	6.9	2.0	74.7	3.7	\$53,402	\$6,830	\$23,174	\$2,043	14.9	4.4
Eldersburg CDP (Carroll)	92.3	1.6	40.5	3.2	17.0	2.4	67.6	2.4	\$94,008	\$5,534	\$37,224	\$2,156	3.3	1.5
Ellicott City CDP (Howard)	95.9	1.1	64.1	2.4	31.4	2.4	71.0	1.8	\$108,944	\$5,975	\$45,008	\$2,061	3.5	1.2
Essex CDP (Baltimore)	83.8	2.4	13.7	1.9	3.4	0.9	70.7	2.4	\$49,763	\$4,356	\$23,998	\$1,518	13.2	3.6
Fairland CDP (Montgomery)	92.3	2.2	44.9	5.3	17.5	3.0	76.5	3.7	\$61,891	\$6,815	\$31,005	\$3,020	11.3	4.0
Fort Washington CDP (Prince George's)	93.1	2.0	41.2	4.2	17.6	2.8	73.2	3.8	\$103,786	\$7,077	\$40,604	\$3,091	4.2	2.2

* MoE: Margin of Error;

^ Homeowners with a mortgage; For more information visit our website at: http://planning.maryland.gov/msdc/S7_ACS.shtml

Revised December, 2011

2008-2010 American Community Survey Three-Year Estimates

	Percent Population 25+ w/ High School Degree		Percent Population 25+ w/ Bachelor's Degree		Percent Population 25+ w/ Advanced Degree		Percent in Labor Force	MoE* +/-	Median House- hold income	MoE* +/-	Per Capita income	MoE* +/-	Pct of Persons Below Poverty Level	
	MoE* +/-	MoE* +/-	MoE* +/-	MoE* +/-	MoE* +/-	MoE* +/-							MoE* +/-	
Frederick city (Frederick)	88.5	1.8	34.8	2.6	13.4	1.5	75.1	1.8	\$65,130	\$3,662	\$31,932	\$1,404	8.3	1.7
Gaithersburg city (Montgomery)	89.1	2.3	52.5	2.7	23.9	2.3	77.7	1.5	\$79,795	\$4,377	\$38,457	\$2,054	8.2	2.3
Germantown CDP (Montgomery)	91.2	1.9	48.0	2.5	21.7	2.0	82.0	1.4	\$88,961	\$3,484	\$36,336	\$1,579	6.4	1.6
Glen Burnie CDP (Anne Arundel)	83.0	2.0	17.5	2.2	4.7	0.8	71.3	2.3	\$57,814	\$3,789	\$27,680	\$1,268	11.9	2.6
Greenbelt city (Prince George's)	90.8	2.9	38.5	4.4	16.2	3.4	77.2	3.9	\$59,017	\$4,064	\$31,574	\$2,594	9.2	5.6
Hagerstown city (Washington)	79.1	2.3	15.2	2.2	5.4	1.4	65.6	2.3	\$34,863	\$3,053	\$20,078	\$1,201	22.0	3.1
Ilchester CDP (Howard)	95.6	1.6	58.2	4.3	26.6	3.6	N	N	\$110,455	\$9,394	\$45,179	\$3,552	2.2	1.6
Landover CDP (Prince George's)	84.2	3.1	12.4	2.9	3.6	1.3	73.4	2.6	\$52,687	\$2,496	\$22,310	\$1,727	14.9	4.0
Laurel city (Prince George's)	84.7	3.3	35.7	4.2	14.6	2.8	80.2	2.7	\$64,498	\$7,380	\$31,535	\$2,319	5.5	2.6
Lochearn CDP (Baltimore)	86.4	3.6	25.0	2.7	11.5	2.2	66.5	3.7	\$53,091	\$4,450	\$25,976	\$1,587	13.2	5.3
Middle River CDP (Baltimore)	81.0	3.7	12.8	2.2	3.8	1.2	69.0	3.2	\$51,747	\$3,499	\$26,112	\$1,855	6.9	2.7
Milford Mill CDP (Baltimore)	90.8	2.1	26.9	3.6	8.9	2.1	73.9	2.6	\$57,102	\$4,269	\$26,144	\$1,528	8.2	2.5
Montgomery Village CDP (Montgomery)	90.0	2.3	49.4	3.6	22.2	2.8	76.2	2.7	\$74,679	\$7,494	\$36,353	\$2,722	7.8	2.3
North Bethesda CDP (Montgomery)	94.5	1.2	65.9	2.9	34.4	2.8	69.7	2.9	\$85,981	\$6,629	\$52,843	\$2,610	5.9	1.7
North Potomac CDP (Montgomery)	97.3	1.5	76.3	3.0	43.9	3.7	72.6	2.7	\$149,111	\$11,036	\$55,223	\$3,797	3.6	1.6
Odenton CDP (Anne Arundel)	95.1	1.5	45.2	3.3	16.7	2.5	79.7	2.3	\$93,326	\$7,516	\$42,414	\$2,630	2.9	1.2
Olney CDP (Montgomery)	95.6	1.8	62.3	3.6	28.7	2.7	76.1	2.9	\$117,263	\$9,380	\$45,288	\$2,697	2.4	1.5
Owings Mills CDP (Baltimore)	93.7	1.8	49.4	5.0	19.8	3.5	78.9	3.0	\$67,105	\$5,521	\$32,257	\$2,288	8.9	3.8
Parkville CDP (Baltimore)	89.7	2.4	21.9	3.0	7.7	1.5	72.5	2.5	\$51,992	\$4,093	\$26,916	\$1,761	9.4	2.9
Pasadena CDP (Anne Arundel)	90.0	2.5	21.2	3.0	7.5	1.9	75.6	3.1	\$91,426	\$5,846	\$35,171	\$1,789	4.5	1.7
Perry Hall CDP (Baltimore)	92.2	1.8	34.5	3.5	12.3	2.2	72.3	2.5	\$74,488	\$4,202	\$32,799	\$2,144	3.0	1.3
Pikesville CDP (Baltimore)	93.2	2.7	55.5	3.1	30.7	3.0	64.1	2.6	\$67,523	\$6,610	\$45,602	\$3,373	7.8	2.9
Potomac CDP (Montgomery)	97.5	0.9	78.4	2.3	47.4	3.0	67.7	2.3	\$156,747	\$13,648	\$84,891	\$6,026	2.5	0.7
Randallstown CDP (Baltimore)	90.8	2.2	31.7	2.9	11.9	2.1	72.4	2.3	\$73,183	\$5,310	\$33,008	\$1,811	6.0	2.3
Reisterstown CDP (Baltimore)	84.6	3.6	35.3	3.8	11.0	2.1	73.7	3.0	\$55,900	\$5,451	\$25,742	\$1,984	15.4	3.9
Rockville city (Montgomery)	92.3	1.3	59.9	2.3	35.8	2.3	72.4	1.5	\$91,664	\$2,790	\$47,266	\$2,027	4.9	1.0

* MoE: Margin of Error;

^ Homeowners with a mortgage; For more information visit our website at: http://planning.maryland.gov/msdc/S7_ACS.shtml

Revised December, 2011

2008-2010 American Community Survey Three-Year Estimates

	Percent Population 25+ w/ High School Degree		Percent Population 25+ w/ Bachelor's Degree		Percent Population 25+ w/ Advanced Degree		Percent in Labor Force	Median Household Income	Per Capita Income	Pct of Persons Below Poverty Level				
	MoE* +/-	MoE* +/-	MoE* +/-	MoE* +/-	MoE* +/-	MoE* +/-				MoE* +/-				
Salisbury city (Wicomico)	82.4	3.1	25.3	3.6	8.8	2.0	63.2	3.9	\$37,361	\$2,183	\$19,545	\$1,309	23.5	4.3
Scaggsville CDP (Howard)	93.4	2.4	49.3	4.3	20.4	3.4	78.8	2.3	\$105,199	\$6,467	\$43,143	\$2,632	2.5	1.5
Severn CDP (Anne Arundel)	88.9	2.9	33.3	3.1	13.3	1.8	75.6	2.2	\$89,566	\$6,150	\$36,378	\$1,890	6.3	2.3
Severna Park CDP (Anne Arundel)	94.9	1.3	53.6	2.8	22.8	2.2	66.2	2.5	\$111,222	\$6,063	\$47,423	\$3,307	2.5	1.1
Silver Spring CDP (Montgomery)	82.3	2.2	49.9	2.5	27.4	1.8	80.9	1.7	\$67,680	\$2,875	\$35,493	\$1,552	11.7	2.2
South Laurel CDP (Prince George's)	91.5	3.3	35.4	4.6	13.8	3.0	78.2	2.6	\$65,594	\$4,094	\$29,858	\$2,584	7.0	3.2
Suitland CDP (Prince George's)	89.0	3.7	15.3	3.3	4.7	1.5	75.6	3.0	\$50,695	\$2,333	\$25,308	\$1,721	6.5	2.7
Towson CDP (Baltimore)	94.5	1.4	61.0	2.8	29.8	2.1	59.9	2.5	\$73,560	\$5,934	\$39,014	\$2,478	9.9	2.1
Waldorf CDP (Charles)	92.6	1.4	26.6	2.3	10.9	1.4	77.1	1.7	\$81,833	\$3,210	\$32,799	\$1,126	7.0	1.5
Wheaton CDP (Montgomery)	71.6	3.6	31.9	2.8	16.1	2.1	74.9	2.5	\$66,341	\$4,985	\$26,411	\$2,188	11.5	2.8
Woodlawn CDP (Baltimore)	88.6	2.2	31.3	3.3	13.1	2.3	73.1	2.7	\$60,759	\$4,940	\$26,610	\$1,749	7.7	3.0
<u>Jurisdictions</u>														
Maryland	87.9	0.2	35.6	0.2	15.9	0.2	70.0	0.2	\$70,017	\$425	\$34,469	\$166	9.1	0.2
Allegany County, Maryland	86.4	1.3	15.9	1.6	7.3	1.0	54.1	2.0	\$37,952	\$3,099	\$20,576	\$1,046	14.5	1.8
Anne Arundel County, Maryland	89.8	0.6	36.1	0.9	14.6	0.5	70.5	0.8	\$82,386	\$1,591	\$38,053	\$653	6.0	0.6
Baltimore County, Maryland	89.3	0.4	34.9	0.6	14.7	0.4	68.6	0.5	\$63,494	\$1,045	\$33,274	\$454	8.5	0.6
Calvert County, Maryland	91.3	1.0	28.7	1.8	12.0	1.2	71.1	1.5	\$87,621	\$3,347	\$35,301	\$1,300	5.1	1.2
Caroline County, Maryland	83.2	2.2	14.2	2.5	4.5	1.3	68.5	2.2	\$59,689	\$1,752	\$23,979	\$1,043	11.3	2.8
Carroll County, Maryland	90.2	1.0	31.8	1.2	12.1	0.9	69.6	1.0	\$79,703	\$1,831	\$33,766	\$866	6.2	1.0
Cecil County, Maryland	86.6	1.4	20.7	1.5	7.0	1.0	67.3	1.8	\$64,377	\$2,815	\$28,358	\$998	9.3	1.6
Charles County, Maryland	91.1	0.9	25.9	1.4	10.0	0.8	73.9	1.1	\$88,484	\$2,616	\$35,364	\$1,034	5.4	0.8
Dorchester County, Maryland	82.7	2.2	17.3	2.2	7.1	1.3	63.8	2.5	\$46,710	\$3,896	\$25,106	\$1,558	12.7	2.1
Frederick County, Maryland	91.6	0.8	36.2	1.2	13.7	0.7	72.9	0.8	\$81,436	\$2,443	\$34,912	\$634	5.1	0.6
Garrett County, Maryland	84.2	2.1	17.6	2.8	7.5	1.6	62.1	1.9	\$45,340	\$2,463	\$23,608	\$1,747	14.4	2.6

* MoE: Margin of Error;

^ Homeowners with a mortgage; For more information visit our website at: http://planning.maryland.gov/msdc/S7_ACS.shtml

Revised December, 2011

2008-2010 American Community Survey Three-Year Estimates

	Percent Population 25+ w/ High School Degree		Percent Population 25+ w/ Bachelor's Degree		Percent Population 25+ w/ Advanced Degree		Percent in Labor Force	Median House- hold income	Per Capita income	Pct of Persons Below Poverty Level				
	MoE* +/-	MoE* +/-	MoE* +/-	MoE* +/-	MoE* +/-	MoE* +/-				MoE* +/-	MoE* +/-			
Harford County, Maryland	91.5	0.7	30.6	1.3	12.1	0.8	72.1	0.9	\$76,808	\$1,782	\$33,372	\$789	6.4	0.9
Howard County, Maryland	94.7	0.6	58.6	1.1	27.7	1.0	73.6	0.8	\$103,657	\$1,958	\$45,484	\$899	4.0	0.6
Kent County, Maryland	85.8	2.9	29.9	3.9	11.4	2.3	61.2	3.0	\$51,892	\$5,873	\$31,253	\$5,799	15.0	2.9
Montgomery County, Maryland	90.4	0.4	56.2	0.6	29.7	0.6	73.7	0.4	\$92,451	\$1,297	\$46,808	\$603	6.8	0.5
Prince George's County, Maryland	85.4	0.5	28.8	0.6	11.8	0.4	74.5	0.4	\$70,384	\$991	\$30,789	\$311	8.1	0.5
Queen Anne's County, Maryland	91.0	1.5	30.1	2.8	12.2	1.7	70.6	1.9	\$83,958	\$4,188	\$34,992	\$1,655	5.6	1.5
St. Mary's County, Maryland	89.6	1.2	27.9	1.8	10.1	1.0	70.8	1.2	\$81,726	\$2,771	\$33,933	\$1,238	7.3	1.4
Somerset County, Maryland	79.7	2.2	13.5	2.2	4.3	1.3	47.2	3.7	\$41,737	\$3,885	\$17,126	\$1,397	14.2	3.2
Talbot County, Maryland	88.9	2.1	32.7	2.3	16.0	1.8	62.8	1.8	\$62,739	\$3,800	\$37,637	\$2,191	6.0	1.3
Washington County, Maryland	83.5	1.1	18.7	1.2	6.4	0.7	64.7	1.4	\$51,579	\$1,570	\$25,597	\$813	11.2	1.3
Wicomico County, Maryland	84.8	1.3	24.7	1.7	10.3	1.2	67.1	1.6	\$48,503	\$2,714	\$24,425	\$951	14.6	2.0
Worcester County, Maryland	89.6	1.4	25.1	2.1	8.8	1.1	61.9	1.8	\$56,277	\$3,058	\$30,940	\$2,187	11.3	2.4
Baltimore city, Maryland	78.3	0.6	25.2	0.6	11.6	0.5	62.3	0.6	\$39,113	\$871	\$22,975	\$442	22.7	0.9

* MoE: Margin of Error;

^ Homeowners with a mortgage; For more information visit our website at: http://planning.maryland.gov/msdc/S7_ACS.shtml

Revised December, 2011

Housing Characteristics

From the American Community Survey's
2008 – 2010 Three-Year Estimates

2008-2010 American Community Survey Three-Year Estimates

	Total Housing Units		Home-owner Vacancy Rate		Percent of Owner Occupied Housing Units		Median Home Value		% Home-owners Spending 35%+ of Income on Housing ^		Median Gross Rent \$		Percent Renters Spending 35%+ of Income on Rent	
	Units	MoE* +/-	Vacancy Rate	MoE* +/-	Units	MoE* +/-	\$	MoE* +/-	Income on Housing ^	MoE* +/-	Rent \$	MoE* +/-	Income on Rent	MoE* +/-
<u>Places over 20,000 Population</u>														
Maryland	2,370,687	818	2.2	0.1	68.2	0.3	\$321,400	\$1,365	29.3	0.4	\$1,117	\$6	41.5	0.6
Annapolis city (Anne Arundel)	18,212	1,023	3.7	2.1	52.7	2.9	\$413,300	\$21,862	26.5	4.5	\$1,237	\$56	42.4	5.6
Arbutus CDP (Baltimore)	8,435	557	1.9	2.2	64.9	4.7	\$248,400	\$8,353	26.2	5.6	\$909	\$87	43.8	12.0
Arnold CDP (Anne Arundel)	8,628	535	0.3	0.5	85.7	4.3	\$424,300	\$15,741	22.2	4.7	\$1,523	\$328	45.7	17.3
Aspen Hill CDP (Montgomery)	18,374	932	1.0	1.0	64.4	3.2	\$394,000	\$11,018	31.7	4.6	\$1,375	\$54	54.2	6.7
Ballenger Creek CDP (Frederick)	7,606	528	N	N	63.9	5.5	\$276,700	\$12,140	30.0	6.7	\$1,348	\$70	27.5	9.0
Baltimore city (Baltimore city)	296,594	941	5.1	0.6	48.7	0.9	\$167,500	\$2,358	31.0	1.5	\$875	\$12	47.7	1.4
Bel Air North CDP (Harford)	10,428	504	2.7	2.2	88.3	3.3	\$333,700	\$12,911	22.9	4.2	\$1,286	\$165		
Bel Air South CDP (Harford)	17,988	699	0.7	0.8	83.4	2.6	\$289,800	\$8,384	24.7	3.8	\$1,038	\$88	37.4	10.5
Bethesda CDP (Montgomery)	25,915	907	1.3	0.9	68.6	2.7	\$814,600	\$18,276	20.3	2.7	\$1,738	\$68	30.1	4.5
Bowie city (Prince George's)	20,809	599	1.5	1.0	86.9	2.1	\$348,100	\$5,683	32.6	4.0	\$1,712	\$122	47.9	8.9
Carney CDP (Baltimore)	12,019	622	0.0	0.9	58.5	3.8	\$255,700	\$9,910	22.2	5.3	\$1,140	\$62	35	7.0
Catonsville CDP (Baltimore)	16,293	707	1.1	1.1	69.3	2.8	\$315,900	\$12,119	24.2	4.1	\$1,109	\$78	50.6	8.4
Chillum CDP (Prince George's)	11,796	781	4.8	3.3	40.2	3.6	\$293,700	\$22,179	42.2	8.7	\$1,136	\$22	45.8	7.6
Clinton CDP (Prince George's)	13,424	705	1.6	1.4	86.5	3.2	\$348,400	\$9,422	37.1	5.3	\$1,703	\$234	52	13.4
College Park city (Prince George's)	7,044	757	0.0	1.8	52.1	3.7	\$344,000	\$15,704	35.9	7.6	\$1,311	\$100	57.9	7.6
Columbia CDP (Howard)	41,071	1,040	0.8	0.7	69.3	1.7	\$379,500	\$6,127	20.7	2.4	\$1,356	\$38	41.6	4.8
Crofton CDP (Anne Arundel)	10,504	649	0.0	0.8	80.7	3.9	\$382,000	\$15,743	20.5	4.8	\$1,452	\$97	28.2	11.8
Cumberland city (Allegany)	11,212	541	2.5	2.4	62.2	4.2	\$110,000	\$8,428	22.9	5.8	\$550	\$35	37.8	7.1
Dundalk CDP (Baltimore)	25,748	1,034	1.5	1.0	67.1	3.1	\$171,300	\$3,867	29.9	4.5	\$928	\$58	43	6.3
Edgewood CDP (Harford)	10,659	614	0.0	1.0	65.3	4.8	\$209,900	\$17,354	30.1	7.8	\$1,091	\$64	46.1	10.2
Eldersburg CDP (Carroll)	10,300	533			92.6	1.8	\$384,400	\$11,134	25.6	3.5	\$1,100	\$73	41.2	13.9
Ellicott City CDP (Howard)	24,623	788	0.6	0.6	72.6	2.3	\$527,000	\$11,860	19.9	2.9	\$1,333	\$43	28.1	5.4
Essex CDP (Baltimore)	16,657	836	2.1	1.7	55.4	3.1	\$200,900	\$10,934	27.7	4.9	\$896	\$33	40.4	6.6
Fairland CDP (Montgomery)	9,583	672	3.3	3.3	49.6	4.7	\$341,700	\$19,642	29.5	8.4	\$1,472	\$75	51.7	8.3
Fort Washington CDP (Prince George's)	8,924	742	1.5	1.8	89.4	3.6	\$385,900	\$16,288	34.6	6.9				

* MoE: Margin of Error;

^ Homeowners with a mortgage; For more information visit our website at: http://planning.maryland.gov/msdc/S7_ACS.shtml

Revised December, 2011

2008-2010 American Community Survey Three-Year Estimates

	Total Housing Units		Home-owner Vacancy Rate		Percent of Owner Occupied Housing Units		Median Home Value		% Home-owners Spending 35%+ of Income on Housing ^		Median Gross Rent \$		Percent Renters Spending 35%+ of Income on Rent	
	Units	MoE* +/-	Rate	MoE* +/-	Units	MoE* +/-	\$	MoE* +/-	Income on Housing ^	MoE* +/-	Rent \$	MoE* +/-	Income on Rent	MoE* +/-
Frederick city (Frederick)	27,965	681	2.0	1.3	58.2	2.6	\$280,300	\$8,813	29.7	3.6	\$1,098	\$40	34.3	4.1
Gaithersburg city (Montgomery)	24,334	1,012	0.5	0.9	57	2.8	\$372,100	\$10,491	30.0	3.7	\$1,357	\$43	40.5	5.7
Germantown CDP (Montgomery)	31,318	1,316	1.1	0.9	70.6	2.3	\$340,200	\$9,368	29.3	3.1	\$1,464	\$36	38.3	5.0
Glen Burnie CDP (Anne Arundel)	27,945	1,218	1.3	1.0	60	2.7	\$271,100	\$5,109	30.9	4.0	\$1,079	\$46	42.1	5.0
Greenbelt city (Prince George's)	10,497	787	2.2	3.2	44.8	3.6	\$248,900	\$15,048	22.1	7.5	\$1,168	\$36	32.9	6.7
Hagerstown city (Washington)	19,030	652	4.8	2.7	41.8	3.2	\$174,100	\$7,215	32.7	5.8	\$753	\$38	47.3	5.6
Ilchester CDP (Howard)	8,188	502	1.2	1.9	83.3	3.6	\$376,600	\$14,691	18.5	4.5	\$1,421	\$62	18.4	11.5
Landover CDP (Prince George's)	9,262	663	0.4	0.6	48.1	4.2	\$233,900	\$11,342	47.7	7.7	\$1,142	\$53	41.7	7.3
Laurel city (Prince George's)	10,858	779	3.2	3.1	51.7	4.4	\$285,100	\$18,948	42.0	7.4	\$1,214	\$56	33.3	8.1
Lochearn CDP (Baltimore)	10,247	660	4.6	2.6	71.9	3.9	\$226,900	\$6,838	35.6	6.0	\$919	\$43	42.5	9.4
Middle River CDP (Baltimore)	10,007	684	3.1	2.9	62.7	4.2	\$177,000	\$8,903	24.1	6.9	\$1,043	\$60	38	8.6
Milford Mill CDP (Baltimore)	12,240	749	0.9	1.4	46.9	4.2	\$234,300	\$10,295	30.4	6.0	\$1,183	\$40	38.5	7.5
Montgomery Village CDP (Montgomery)	12,683	747	2.7	2.1	72.9	3.4	\$296,300	\$12,578	32.8	5.2	\$1,329	\$60	52.6	9.5
North Bethesda CDP (Montgomery)	19,900	836	2.1	2.0	60.4	3.0	\$485,700	\$19,106	34.5	4.5	\$1,570	\$83	32.8	4.9
North Potomac CDP (Montgomery)	7,774	369			82.8	3.4	\$628,900	\$16,926	20.5	4.4	\$1,748	\$237	48.5	13.7
Odenton CDP (Anne Arundel)	14,934	682	1.0	1.1	69.6	3.5	\$341,600	\$9,348	21.4	4.9	\$1,632	\$70	23.2	6.9
Olney CDP (Montgomery)	11,673	569			88.4	2.9	\$509,600	\$21,597	24.0	3.8	\$1,496	\$257		
Owings Mills CDP (Baltimore)	14,557	842	2.8	2.3	43.9	3.0	\$279,100	\$11,430	30.8	6.3	\$1,227	\$49	30.1	6.4
Parkville CDP (Baltimore)	13,336	683	0.6	1.0	61.4	3.3	\$212,800	\$6,753	25.0	4.5	\$990	\$42	43.7	7.4
Pasadena CDP (Anne Arundel)	8,673	617	1.0	1.6	86.1	3.8	\$316,600	\$15,169	22.6	6.0	\$1,550	\$175	48	17.0
Perry Hall CDP (Baltimore)	12,310	627	3.1	2.3	78.5	3.7	\$279,400	\$8,005	28.7	5.2	\$1,252	\$83	31.2	11.4
Pikesville CDP (Baltimore)	14,301	648	1.7	1.7	66.6	3.2	\$330,000	\$14,948	34.1	5.3	\$1,080	\$51	34.8	7.9
Potomac CDP (Montgomery)	16,405	545	1.3	1.2	89.4	2.1	\$868,200	\$21,588	27.1	4.0	\$1,689	\$447	47.1	11.2
Randallstown CDP (Baltimore)	13,804	764	2.4	1.9	73.2	3.5	\$271,400	\$7,161	31.7	4.7	\$1,072	\$53	37.9	8.8
Reisterstown CDP (Baltimore)	10,405	725			57.9	4.2	\$258,500	\$9,176	25.0	5.3	\$982	\$44	41.9	9.7
Rockville city (Montgomery)	24,905	546	0.8	0.9	58.6	2.1	\$488,900	\$15,097	24.7	3.1	\$1,639	\$52	31.8	4.4

* MoE: Margin of Error;

^ Homeowners with a mortgage; For more information visit our website at: http://planning.maryland.gov/msdc/S7_ACS.shtml

Revised December, 2011

2008-2010 American Community Survey Three-Year Estimates

	Total Housing Units		Home-owner Vacancy Rate		Percent of Owner Occupied Housing Units		Median Home Value		% Home-owners Spending 35%+ of Income on Housing ^		Median Gross Rent \$		Percent Renters Spending 35%+ of Income on Rent	
	Units	MoE* +/-	Rate	MoE* +/-	Units	MoE* +/-	\$	MoE* +/-	Income on Housing ^	MoE* +/-	Rent \$	MoE* +/-	Income on Rent	MoE* +/-
Salisbury city (Wicomico)	13,605	705	4.5	3.2	40.3	3.9	\$172,600	\$9,705	40.2	7.3	\$899	\$42	51.6	5.6
Scaggsville CDP (Howard)	8,734	649	0.0	1.1	70.2	4.7	\$430,300	\$26,121	24.7	6.0	\$1,421	\$88	33.3	12.3
Severn CDP (Anne Arundel)	16,353	915	1.9	1.6	77.6	3.3	\$351,700	\$9,397	26.6	4.3	\$1,299	\$163	35.8	9.0
Severna Park CDP (Anne Arundel)	12,941	587			92.6	2.1	\$499,100	\$20,369	26.1	3.9	\$1,589	\$213	54.8	14.0
Silver Spring CDP (Montgomery)	29,959	1,240	1.5	1.2	41.1	1.8	\$455,000	\$10,870	25.6	3.7	\$1,307	\$29	41.9	3.9
South Laurel CDP (Prince George's)	10,234	669	1.2	2.0	41.2	4.3	\$371,100	\$11,751	36.1	6.1	\$1,208	\$34	36.9	6.2
Suitland CDP (Prince George's)	11,187	794	2.5	2.4	39.4	3.2	\$249,500	\$14,060	38.6	7.9	\$1,090	\$39	44.7	6.3
Towson CDP (Baltimore)	21,746	870	1.4	1.2	59.1	2.6	\$349,100	\$11,158	20.0	3.3	\$1,176	\$40	46.1	4.8
Waldorf CDP (Charles)	25,257	841	3.1	1.6	73.6	2.5	\$312,800	\$8,689	30.3	3.3	\$1,404	\$55	49.6	6.6
Wheaton CDP (Montgomery)	15,555	801	2.2	1.6	70.9	3.2	\$355,600	\$6,889	43.7	5.4	\$1,448	\$107	48.7	8.7
Woodlawn CDP (Baltimore)	16,166	1,004	0.8	1.1	63.5	4.1	\$239,200	\$7,267	34.0	5.4	\$1,035	\$71	40.9	8.1
<u>Jurisdictions</u>														
Maryland	2,370,687	818	2.2	0.1	68.2	0.3	\$321,400	\$1,365	29.3	0.4	\$ 1,117	\$ 6	41.5	0.6
Allegany County, Maryland	33,303	498	1.9	0.9	70.7	1.9	\$123,900	\$5,560	20.2	3.3	\$ 568	\$ 29	39.7	4.5
Anne Arundel County, Maryland	211,430	1,039	1.7	0.4	74.8	0.7	\$360,500	\$3,287	27.0	1.2	\$ 1,349	\$ 25	39.2	2.6
Baltimore County, Maryland	334,607	957	1.7	0.3	66.0	0.7	\$273,600	\$1,871	27.5	1.0	\$ 1,060	\$ 11	40.1	1.5
Calvert County, Maryland	33,584	227	1.8	1.0	83.2	2.1	\$384,100	\$8,800	28.3	2.7	\$ 1,202	\$ 72	47.0	7.4
Caroline County, Maryland	13,473	124	5.6	2.7	71.7	3.5	\$236,400	\$11,797	37.0	5.2	\$ 919	\$ 102	34.7	8.6
Carroll County, Maryland	62,301	473	1.0	0.5	83.3	1.2	\$341,600	\$5,783	26.5	2.1	\$ 963	\$ 53	41.7	5.5
Cecil County, Maryland	40,872	480	4.2	1.2	74.8	2.0	\$269,900	\$5,937	27.6	2.9	\$ 939	\$ 32	41.8	4.4
Charles County, Maryland	54,467	143	2.6	0.9	81.4	1.5	\$343,800	\$5,687	29.1	2.1	\$ 1,336	\$ 51	46.7	5.4
Dorchester County, Maryland	16,496	206	4.9	1.9	70.8	3.2	\$204,300	\$14,362	29.8	5.2	\$ 738	\$ 45	40.8	7.7
Frederick County, Maryland	89,529	402	1.0	0.4	75.9	1.4	\$334,100	\$4,690	26.5	1.7	\$ 1,147	\$ 28	34.1	3.4
Garrett County, Maryland	18,792	121	2.3	1.7	76.6	2.7	\$174,200	\$10,179	27.0	5.0	\$ 556	\$ 58	38.5	7.8

* MoE: Margin of Error;

^ Homeowners with a mortgage; For more information visit our website at: http://planning.maryland.gov/msdc/S7_ACS.shtml

Revised December, 2011

2008-2010 American Community Survey Three-Year Estimates

	Total		Home-owner		Percent of Owner Occupied		Median Home Value		% Home-owners Spending 35%+ of Income on Housing ^		Median Gross Rent		Percent Renters Spending 35%+ of Income on Rent	
	Housing Units	MoE* +/-	Vacancy Rate	MoE* +/-	Housing Units	MoE* +/-	Home Value \$	MoE* +/-	Income on Housing ^	MoE* +/-	Gross Rent \$	MoE* +/-	Income on Rent	MoE* +/-
Harford County, Maryland	95,366	294	1.4	0.5	80.8	1.2	\$297,300	\$5,118	27.5	1.8	\$ 1,017	\$ 45	39.2	4.2
Howard County, Maryland	108,282	234	1.2	0.5	74.3	1.1	\$445,400	\$6,097	22.1	1.6	\$ 1,366	\$ 20	35.0	3.1
Kent County, Maryland	10,529	302	4.7	3.5	76.0	3.6	\$279,400	\$20,817	35.9	6.5	\$ 802	\$ 82	50.8	11.1
Montgomery County, Maryland	374,666	546	1.3	0.3	68.5	0.6	\$463,200	\$3,378	28.6	1.0	\$ 1,436	\$ 15	41.9	1.5
Prince George's County, Maryland	327,209	705	2.2	0.4	63.1	0.7	\$316,400	\$2,747	38.6	1.0	\$ 1,163	\$ 9	40.1	1.6
Queen Anne's County, Maryland	20,037	185	2.5	1.5	83.8	2.4	\$369,000	\$13,002	29.6	3.4	\$ 1,233	\$ 119	39.4	9.1
St. Mary's County, Maryland	41,091	398	2.5	1.2	73.0	2.4	\$317,500	\$8,012	23.8	2.8	\$ 1,138	\$ 52	31.6	5.1
Somerset County, Maryland	11,087	428	4.3	3.0	68.7	4.4	\$163,900	\$8,917	32.7	6.2	\$ 727	\$ 57	52.9	10.2
Talbot County, Maryland	19,518	144	5.5	2.3	76.8	2.4	\$354,100	\$15,670	30.2	3.8	\$ 961	\$ 80	40.1	6.8
Washington County, Maryland	60,780	335	1.8	0.7	66.3	1.8	\$233,300	\$5,115	28.4	2.3	\$ 772	\$ 20	40.2	3.8
Wicomico County, Maryland	41,047	359	2.9	1.1	63.2	2.0	\$197,500	\$5,875	29.3	3.2	\$ 927	\$ 27	46.9	4.1
Worcester County, Maryland	55,627	137	6.2	2.1	78.9	2.2	\$277,100	\$9,147	36.3	4.2	\$ 786	\$ 52	40.6	8.8
Baltimore city, Maryland	296,594	941	5.1	0.6	48.7	0.9	\$167,500	\$2,358	31.0	1.5	\$ 875	\$ 12	47.7	1.4

* MoE: Margin of Error;

^ Homeowners with a mortgage; For more information visit our website at: http://planning.maryland.gov/msdc/S7_ACS.shtml

Revised December, 2011

Journey to Work Characteristics

From the American Community Survey's
2008 – 2010 Three-Year Estimates

2008-2010 American Community Survey Three-Year Estimates

	Mean	Percent		Percent		Percent		Percent		Percent		Percent of		
	Travel Time to Work (Min.)	MoE* +/-	Workers Commuti ng 60 min. or longer	MoE* +/-	Who Work in MD. Outside County of Residence	MoE* +/-	Commuting on Public Transit	MoE* +/-	Commuting by Carpool	MoE* +/-	Workers Who Work At Home	MoE* +/-	House- Holds With no Vehicle	MoE* +/-
<u>Places over 20,000 Population</u>														
Maryland	31.6	0.1	14.3	0.2	29.5	0.2	8.7	0.2	10.6	0.2	4	0.1	9.3	0.2
Annapolis city (Anne Arundel)	27.2	1.6	11.0	2.1	19.1	2.7	4.3	1.2	11.6	2.8	3.5	1.1	12.0	2.2
Arbutus CDP (Baltimore)	25.4	1.8	8.6	2.3	60.9	4.6	5.5	3.3	10.2	3.2	2.6	1.4	6.5	3.3
Arnold CDP (Anne Arundel)	28.0	1.5	9.9	2.2	23.5	2.9	1.8	1.0	6.0	2.2	5.0	1.8	1.8	1.6
Aspen Hill CDP (Montgomery)	34.4	1.5	16.8	2.5	10.4	1.7	16.9	3.0	9.6	1.9	4.6	1.3	10.3	1.8
Ballenger Creek CDP (Frederick)	32.7	3.1	19.4	3.6	29.9	4.5	1.6	1.1	10.8	3.1	2.3	1.5	2.4	1.1
Baltimore city (Baltimore city)	29.9	0.5	12.8	0.7	36.3	1.0	18.4	0.9	11.0	0.7	2.9	0.3	29.8	0.9
Bel Air North CDP (Harford)	34.0	1.9	17.8	3.1	45.0	3.5	0.9	0.5	7.5	2.4	4.0	1.6	2.3	1.1
Bel Air South CDP (Harford)	32.2	1.5	12.8	1.9	48.8	3.3	2.0	0.7	7.6	2.3	2.7	0.9	4.0	1.3
Bethesda CDP (Montgomery)	28.9	0.9	6.7	1.2	4.6	0.9	17.2	2.1	6.5	1.2	10.8	1.5	9.0	1.5
Bowie city (Prince George's)	35.2	1.3	16.8	2.1	24.0	2.3	8.7	1.7	8.8	1.8	4.7	1.3	2.6	1.1
Carney CDP (Baltimore)	26.6	1.5	5.3	1.5	39.1	3.5	0.9	0.9	9.6	3.3	4.0	1.7	9.1	3.0
Catonsville CDP (Baltimore)	24.9	1.3	5.3	1.4	55.2	3.2	1.9	0.9	6.9	2.3	3.8	1.0	10.8	2.4
Chillum CDP (Prince George's)	36.4	1.8	19.4	4.0	17.7	2.8	25.7	3.8	17.5	3.8	1.9	1.1	16.4	3.5
Clinton CDP (Prince George's)	38.8	1.7	22.5	3.1	9.5	2.6	14.1	2.7	9.9	2.7	1.3	0.9	3.6	1.6
College Park city (Prince George's)	25.5	2.3	8.8	2.9	19.2	3.8	10.6	2.5	8.4	2.3	5.3	2.1	10.8	3.5
Columbia CDP (Howard)	30.7	1.0	14.0	1.5	45.9	2.1	5.5	1.2	8.0	1.3	4.1	0.8	4.7	0.9
Crofton CDP (Anne Arundel)	32.5	1.8	13.9	2.7	36.5	3.8	5.2	2.1	10.1	2.8	4.4	1.8	0.9	0.7
Cumberland city (Allegany)	16.6	1.9	5.4	2.0	3.2	1.6	0.8	0.7	7.4	3.0	3.7	1.8	15.9	3.0
Dundalk CDP (Baltimore)	26.6	1.1	8.5	1.7	52.1	2.8	3.7	1.0	15.0	2.7	0.9	0.5	11.9	1.8
Edgewood CDP (Harford)	30.5	2.3	13.7	3.2	50.1	5.9	1.6	1.3	11.9	3.3	2.8	1.8	10.9	4.3
Eldersburg CDP (Carroll)	35.8	1.6	16.0	2.6	63.2	3.0	1.2	0.6	8.8	2.3	4.9	1.8	2.7	1.4
Ellicott City CDP (Howard)	28.5	1.1	9.4	1.6	49.3	2.6	2.3	0.7	7.9	1.5	5.6	0.9	3.4	1.3
Essex CDP (Baltimore)	29.7	1.7	9.7	2.2	43.4	3.9	7.0	2.5	12.1	2.4	1.8	0.9	11.4	2.3
Fairland CDP (Montgomery)	41.1	2.8	21.2	4.1	21.4	3.5	12.4	3.3	13.7	3.7	3.4	2.1	6.1	2.6
Fort Washington CDP (Prince George's)	40.3	2.7	25.5	4.8	9.4	2.6	9.2	2.4	12.9	4.1	5.7	2.5	2.0	1.2

* MoE: Margin of Error;

^ Homeowners with a mortgage; For more information visit our website at: http://planning.maryland.gov/msdc/S7_ACS.shtml

Revised December, 2011

2008-2010 American Community Survey Three-Year Estimates

	Mean	Percent		Percent		Percent		Percent		Percent		Percent of		
	Travel Time to Work (Min.)	MoE* +/-	Workers Commuti ng 60 min. or longer	MoE* +/-	Who Work in MD. Outside County of Residence	MoE* +/-	Commuting on Public Transit	MoE* +/-	Commuting by Carpool	MoE* +/-	Workers Who Work At Home	MoE* +/-	House- Holds With no Vehicle	MoE* +/-
Frederick city (Frederick)	30.4	2.0	18.7	2.6	26.1	2.6	3.7	1.1	14.9	2.3	4.1	1.1	7.3	1.4
Gaithersburg city (Montgomery)	31.6	1.6	15.8	2.2	9.0	1.9	10.0	1.8	11.7	2.6	3.5	1.1	7.5	1.6
Germantown CDP (Montgomery)	34.7	1.1	18.4	1.9	7.1	1.2	10.1	1.3	12.3	2.1	2.9	0.6	4.8	1.3
Glen Burnie CDP (Anne Arundel)	26.4	1.3	7.4	1.6	36.5	3.0	3.6	0.9	11.0	1.7	1.2	0.4	10.5	2.0
Greenbelt city (Prince George's)	28.6	1.9	12.0	3.4	19.8	3.8	19.5	4.3	11.1	3.4	2.0	1.5	13.0	3.6
Hagerstown city (Washington)	24.6	2.1	10.5	2.1	18.2	2.9	2.1	1.3	16.3	2.8	1.7	0.7	16.0	2.5
Ilchester CDP (Howard)	29.1	1.8	12.1	3.0	54.6	4.2	3.7	1.5	6.6	1.9	3.6	1.1	3.0	1.7
Landover CDP (Prince George's)	32.5	2.2	17.9	3.8	10.9	2.5	25.2	4.0	13.0	3.6	2.7	1.7	20.2	3.9
Laurel city (Prince George's)	32.6	2.0	13.8	2.8	36.3	4.5	8.7	2.3	13.7	3.4	3.5	1.6	5.6	2.6
Lochearn CDP (Baltimore)	27.3	1.6	7.6	2.3	55.0	4.6	8.4	2.6	9.6	3.3	2.2	1.0	7.2	2.3
Middle River CDP (Baltimore)	28.8	2.0	8.3	2.9	47.7	5.1	1.3	1.0	13.3	3.9	0.3	0.4	7.8	2.4
Milford Mill CDP (Baltimore)	33.6	3.8	13.6	3.8	51.7	4.0	11.3	2.8	8.2	2.4	3.0	1.7	11.1	3.0
Montgomery Village CDP (Montgomery)	34.9	1.4	18.6	2.8	8.3	2.4	13.7	2.3	14.2	2.9	3.8	1.0	6.7	2.2
North Bethesda CDP (Montgomery)	31.8	2.2	10.9	2.1	8.6	2.1	23.0	3.0	6.3	2.0	5.7	1.3	9.1	2.0
North Potomac CDP (Montgomery)	33.4	1.3	17.3	2.5	7.4	1.8	7.8	2.0	8.5	2.3	6.0	2.8	3.5	1.5
Odenton CDP (Anne Arundel)	31.5	1.8	15.8	2.9	31.2	3.3	7.6	1.9	7.3	2.4	3.6	1.2	1.0	0.5
Olney CDP (Montgomery)	33.6	1.8	14.9	3.1	11.0	2.1	5.8	1.8	6.8	1.9	5.2	1.4	2.2	1.1
Owings Mills CDP (Baltimore)	32.6	1.9	9.8	2.3	49.1	3.9	8.9	2.2	6.2	1.8	4.0	1.8	7.6	2.3
Parkville CDP (Baltimore)	28.3	2.1	7.1	2.4	41.0	3.8	5.7	2.2	10.6	2.2	2.2	1.8	10.9	2.9
Pasadena CDP (Anne Arundel)	28.3	1.8	7.7	2.3	38.5	4.5	0.7	0.6	8.2	2.4	1.5	0.9	2.0	1.2
Perry Hall CDP (Baltimore)	29.2	1.4	8.3	1.7	44.1	4.0	1.3	0.8	9.7	2.7	1.5	0.9	3.1	1.2
Pikesville CDP (Baltimore)	25.8	1.5	7.2	2.4	51.5	4.3	5.1	1.6	10.2	3.5	4.4	1.6	10.8	2.4
Potomac CDP (Montgomery)	31.6	1.4	11.3	2.2	7.6	1.6	5.0	1.3	7.8	1.6	11.1	1.7	3.5	1.1
Randallstown CDP (Baltimore)	33.2	1.8	12.5	2.7	59.7	4.3	9.1	2.7	9.5	2.8	3.0	1.6	7.4	2.4
Reisterstown CDP (Baltimore)	29.9	2.0	11.4	3.0	36.7	4.3	6.1	2.1	11.3	3.4	3.4	1.2	6.4	2.1
Rockville city (Montgomery)	31.3	1.1	14.9	1.9	6.7	1.1	20.9	2.5	7.6	1.2	5.8	1.0	9.1	1.4

* MoE: Margin of Error;

^ Homeowners with a mortgage; For more information visit our website at: http://planning.maryland.gov/msdc/S7_ACS.shtml

Revised December, 2011

2008-2010 American Community Survey Three-Year Estimates

	Mean	Percent		Percent		Percent		Percent		Percent		Percent of		
	Travel Time to Work (Min.)	MoE* +/-	Workers Commuti ng 60 min. or longer	MoE* +/-	Who Work in MD. Outside County of Residence	MoE* +/-	Commuting on Public Transit	MoE* +/-	Commuting by Carpool	MoE* +/-	Workers Who Work At Home	MoE* +/-	House- Holds With no Vehicle	MoE* +/-
Salisbury city (Wicomico)	20.9	1.9	6.8	2.3	19.7	4.3	2.0	1.4	13.8	3.4	2.1	1.4	13.8	3.3
Scaggsville CDP (Howard)	34.2	2.6	16.2	3.7	55.9	3.6	6.3	2.4	9.0	3.0	6.6	1.9	2.1	1.4
Severn CDP (Anne Arundel)	28.4	1.6	11.4	2.5	41.5	3.4	3.3	1.2	8.3	2.1	3.0	1.1	4.1	1.5
Severna Park CDP (Anne Arundel)	28.4	1.4	10.0	2.1	29.8	3.1	0.9	0.7	6.7	2.0	4.6	1.4	2.3	1.2
Silver Spring CDP (Montgomery)	34.6	1.3	15.5	2.1	13.4	1.6	30.4	2.6	11.2	2.1	4.6	1.1	18.0	2.5
South Laurel CDP (Prince George's)	32.6	3.2	17.7	4.1	30.8	4.8	10.0	2.9	10.9	4.5	3.1	1.4	6.6	2.4
Suitland CDP (Prince George's)	36.6	2.5	18.5	3.6	9.3	2.7	27.6	4.1	8.7	2.7	0.6	0.7	14.3	3.1
Towson CDP (Baltimore)	24.3	1.4	6.7	1.7	43.6	2.6	2.9	1.0	8.7	2.2	4.9	1.5	8.5	1.7
Waldorf CDP (Charles)	42.5	1.5	30.7	2.8	31.0	3.0	8.9	1.6	13.3	2.0	1.1	0.5	3.9	1.2
Wheaton CDP (Montgomery)	34.6	1.6	12.7	2.3	11.2	2.3	22.2	3.7	15.6	3.2	2.4	0.9	11.1	2.4
Woodlawn CDP (Baltimore)	28.3	1.2	7.2	1.5	61.9	4.5	7.5	2.5	11.7	3.3	1.4	0.7	8.1	2.2
<u>Jurisdictions</u>														
Maryland	31.6	0.1	14.3	0.2	29.5	0.2	8.7	0.2	10.6	0.2	4.0	0.1	9.3	0.2
Allegany County, Maryland	23.1	1.5	8.6	1.4	5.9	1.2	0.7	0.4	11.2	1.8	3.9	1.1	9.6	1.4
Anne Arundel County, Maryland	29.2	0.4	11.3	0.6	33.1	0.9	3.3	0.4	9.4	0.8	3.9	0.4	4.6	0.5
Baltimore County, Maryland	28.2	0.4	8.3	0.4	46.4	0.6	4.3	0.4	10.0	0.5	3.3	0.3	7.9	0.5
Calvert County, Maryland	39.6	1.3	27.7	2.1	43.3	2.3	3.0	0.6	12.2	1.7	5.0	1.1	4.1	1.0
Caroline County, Maryland	33.0	2.1	17.8	3.0	51.1	3.9	0.4	0.4	8.4	2.1	4.2	1.4	4.8	1.5
Carroll County, Maryland	34.6	0.7	18.1	1.1	51.1	1.4	0.9	0.2	8.7	0.8	4.8	0.9	4.2	0.7
Cecil County, Maryland	29.4	1.0	11.9	1.3	22.6	1.8	1.3	0.5	12.7	1.6	5.1	1.0	5.1	1.2
Charles County, Maryland	42.8	1.1	31.5	1.8	28.7	1.7	6.3	0.9	12.3	1.2	2.6	0.7	3.0	0.6
Dorchester County, Maryland	25.6	1.8	8.1	1.8	31.8	3.0	1.8	1.1	9.3	2.5	3.6	1.1	10.0	1.7
Frederick County, Maryland	34.0	0.9	20.6	1.4	30.3	1.4	2.4	0.4	11.9	1.1	5.5	0.7	4.5	0.6
Garrett County, Maryland	23.6	1.7	5.3	1.1	13.1	2.5	0.2	0.2	14.2	2.9	6.0	1.7	6.9	1.6

* MoE: Margin of Error;

^ Homeowners with a mortgage; For more information visit our website at: http://planning.maryland.gov/msdc/S7_ACS.shtml

Revised December, 2011

2008-2010 American Community Survey Three-Year Estimates

	Mean	Percent		Percent		Percent		Percent		Percent		Percent of		
	Travel Time to Work (Min.)	MoE* +/-	Workers Commuti ng 60 min. or longer	MoE* +/-	Who Work in MD. Outside County of Residence	MoE* +/-	Commuting on Public Transit	MoE* +/-	Commuting by Carpool	MoE* +/-	Workers Who Work At Home	MoE* +/-	House- Holds With no Vehicle	MoE* +/-
Harford County, Maryland	31.0	0.7	12.9	0.9	44.2	1.5	1.3	0.3	8.9	0.9	3.6	0.5	4.5	0.7
Howard County, Maryland	30.8	0.6	12.7	1.0	49.6	1.3	4.0	0.6	8.3	0.8	5.4	0.5	3.6	0.5
Kent County, Maryland	31.6	5.5	17.4	5.3	21.7	3.7	5.1	3.5	11.7	3.4	11.7	4.3	6.9	2.7
Montgomery County, Maryland	33.5	0.4	15.0	0.5	10.7	0.4	15.1	0.5	10.2	0.4	5.5	0.3	8.0	0.5
Prince George's County, Maryland	35.3	0.4	18.2	0.7	18.1	0.6	17.3	0.6	12.8	0.6	2.8	0.3	9.4	0.5
Queen Anne's County, Maryland	34.1	1.9	19.7	2.8	47.0	3.4	0.8	0.4	10.9	2.3	6.9	1.5	2.6	1.1
St. Mary's County, Maryland	29.5	1.4	15.1	1.6	20.0	2.0	2.0	0.7	10.0	1.4	3.2	0.9	4.1	0.9
Somerset County, Maryland	22.7	2.0	4.8	1.8	40.7	5.7	1.8	1.6	6.4	2.3	4.8	2.3	7.4	2.4
Talbot County, Maryland	25.4	2.1	11.8	2.4	25.3	3.3	0.4	0.4	8.2	2.0	5.8	1.4	4.9	1.3
Washington County, Maryland	28.7	1.1	12.9	1.3	23.8	1.6	1.3	0.5	12.1	1.0	3.4	0.7	7.5	0.9
Wicomico County, Maryland	22.4	1.1	6.2	1.1	17.4	1.7	0.8	0.5	12.0	1.7	3.0	0.7	7.8	1.2
Worcester County, Maryland	22.9	1.5	4.8	1.3	19.0	2.3	2.1	1.0	8.1	1.6	4.1	1.1	6.4	1.5
Baltimore city, Maryland	29.9	0.5	12.8	0.7	36.3	1.0	18.4	0.9	11.0	0.7	2.9	0.3	29.8	0.9

* MoE: Margin of Error;

^ Homeowners with a mortgage; For more information visit our website at: http://planning.maryland.gov/msdc/S7_ACS.shtml

Revised December, 2011