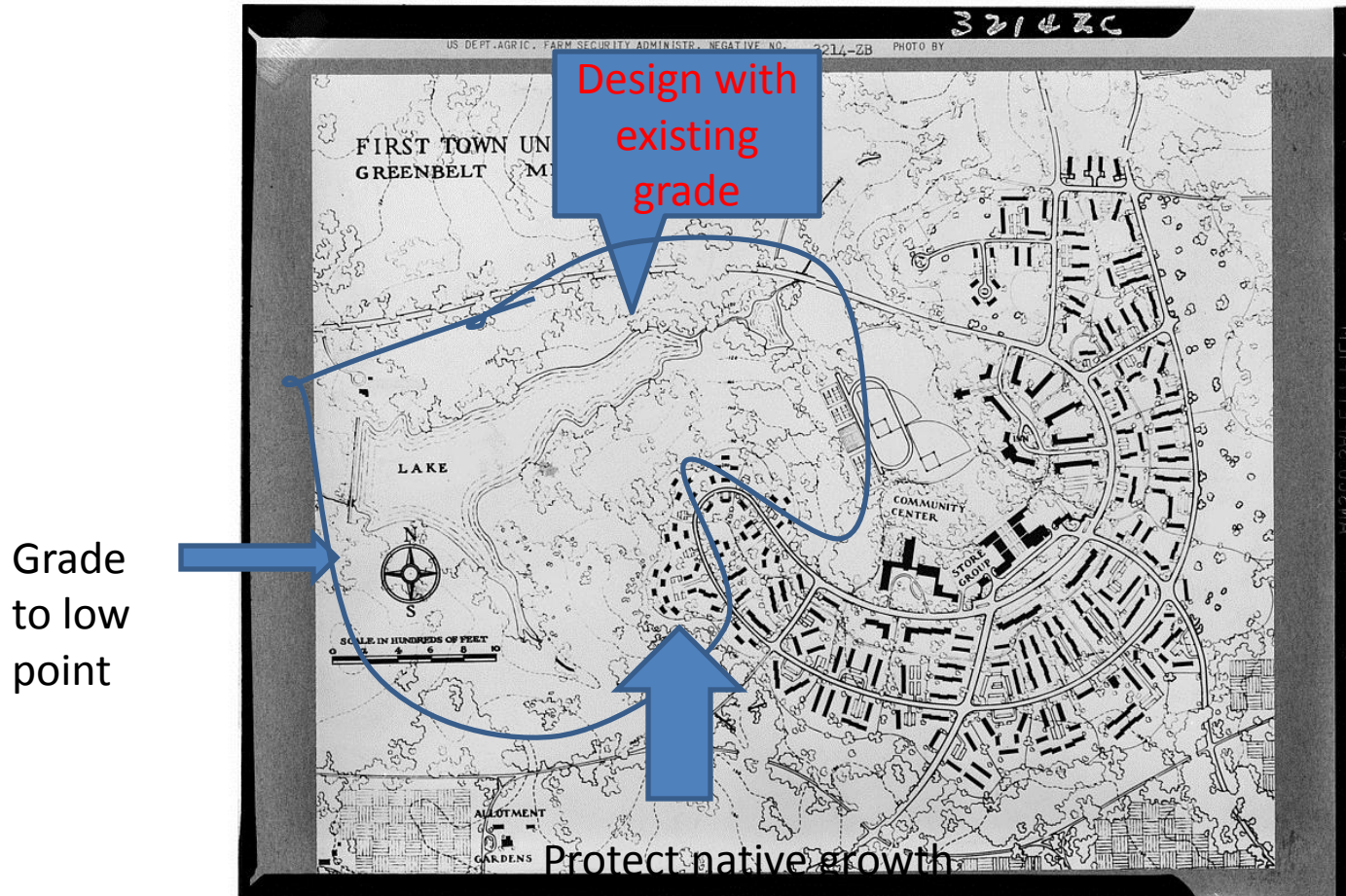


I 
GREEN
BELT

75
1937-2012

community. culture. cooperation.

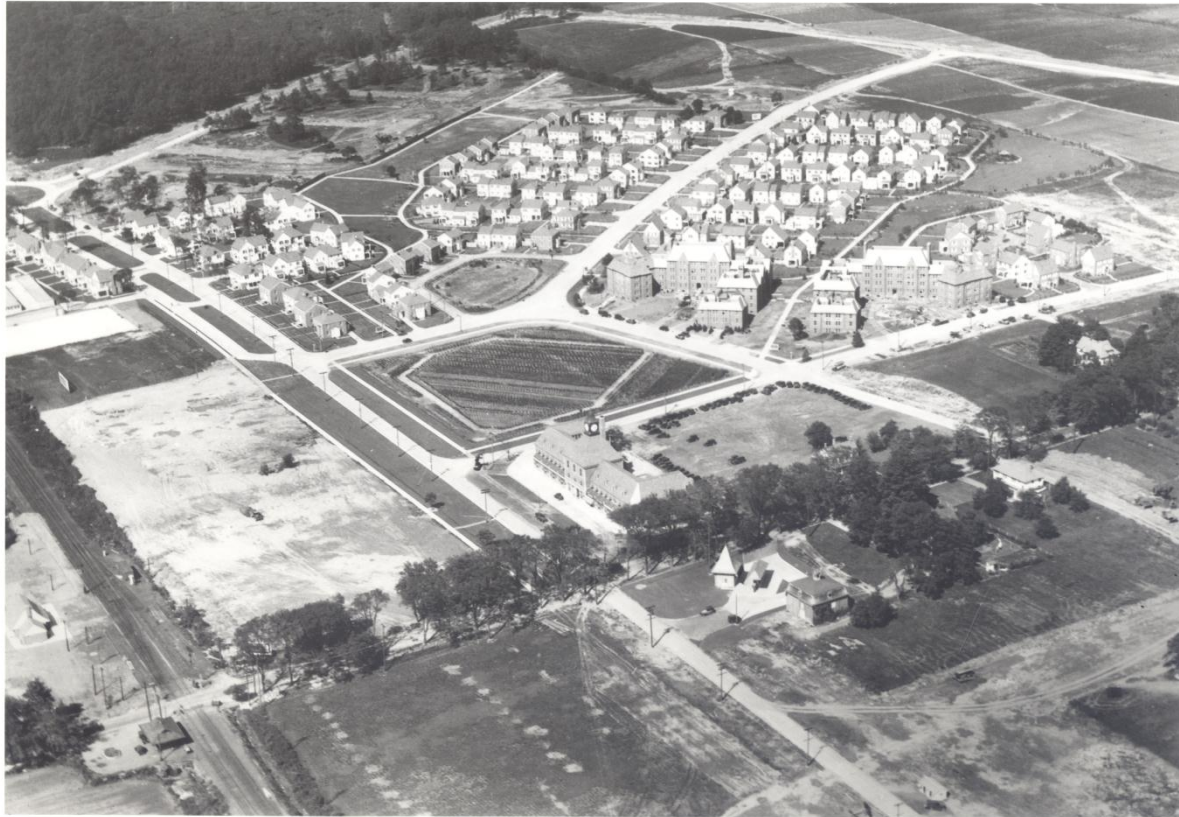
Sustainable Greenbelt – after 75 years



Letchworth, England (green belt)



Radburn, NJ (neighborhood unit)



5483-5-13

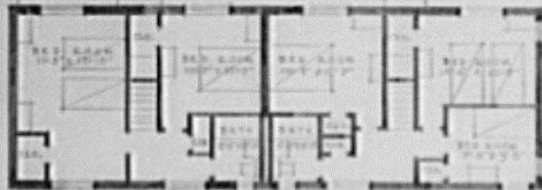


FAIRCHILD AERIAL SURVEYS, INC. N.Y.C.

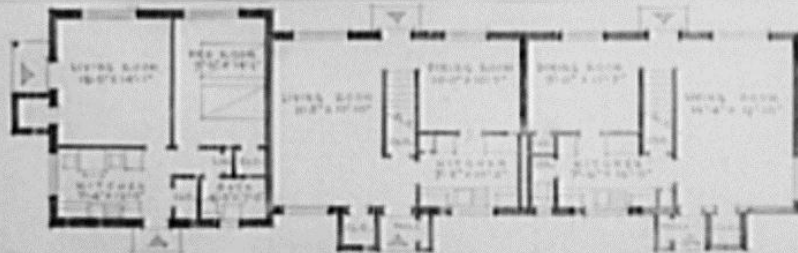
VOGA SAFETY FILM



TYPICAL GROUP HOUSE.
3 FAMILY.
GREENBELT, MARYLAND.



SECOND FLOOR PLAN.



FIRST FLOOR PLAN.

3212



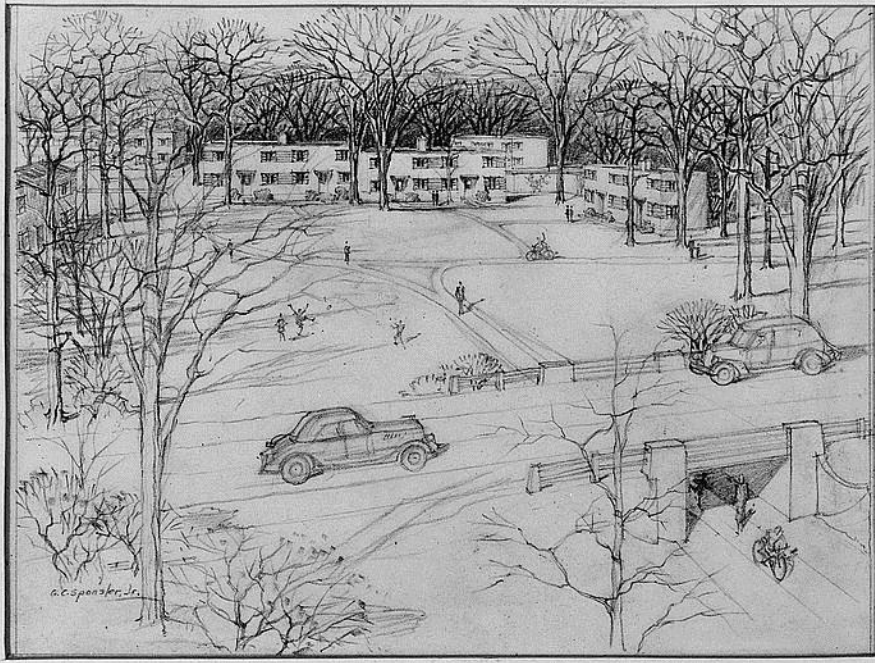


31049-7

F/S - 3537-E



8-5147 AR



WOODBRIDGE 1930

KA-2889-E



KA-19181-A91









7790-2-13

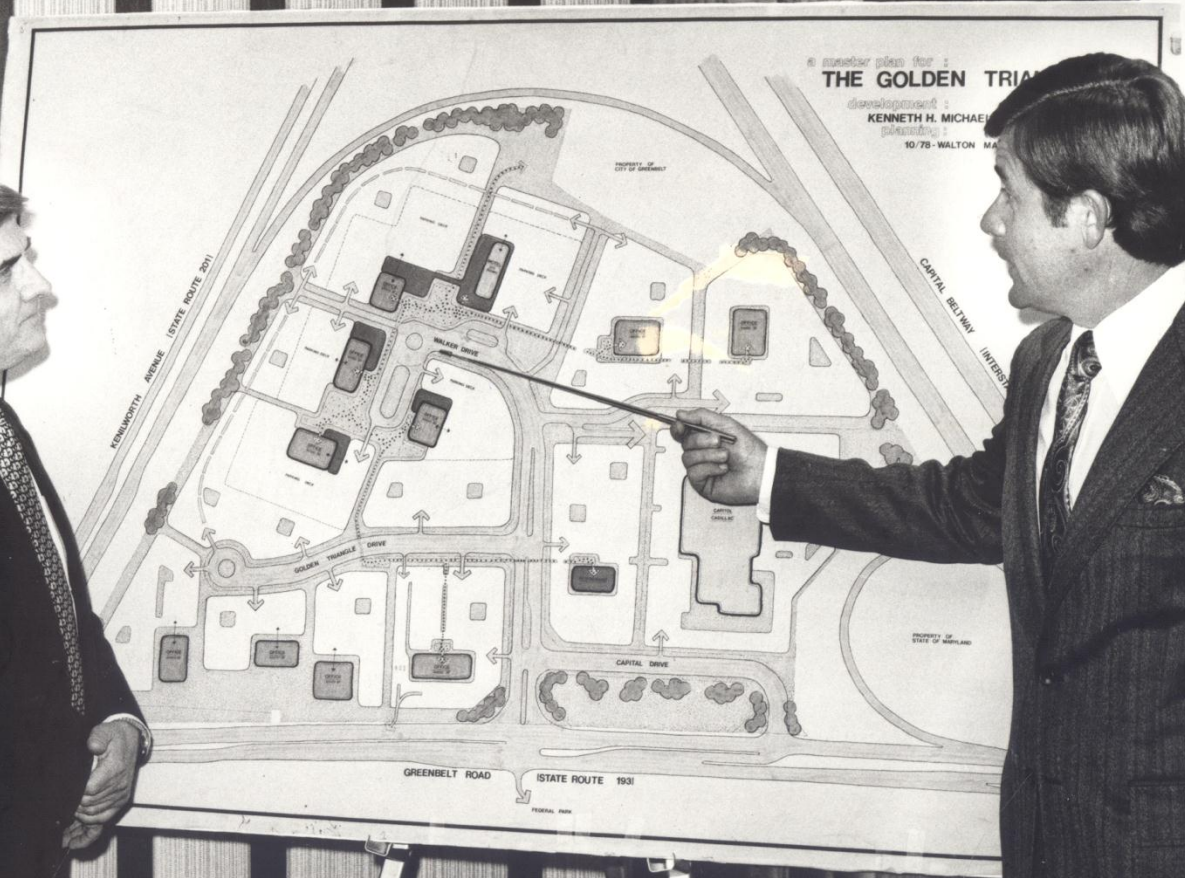








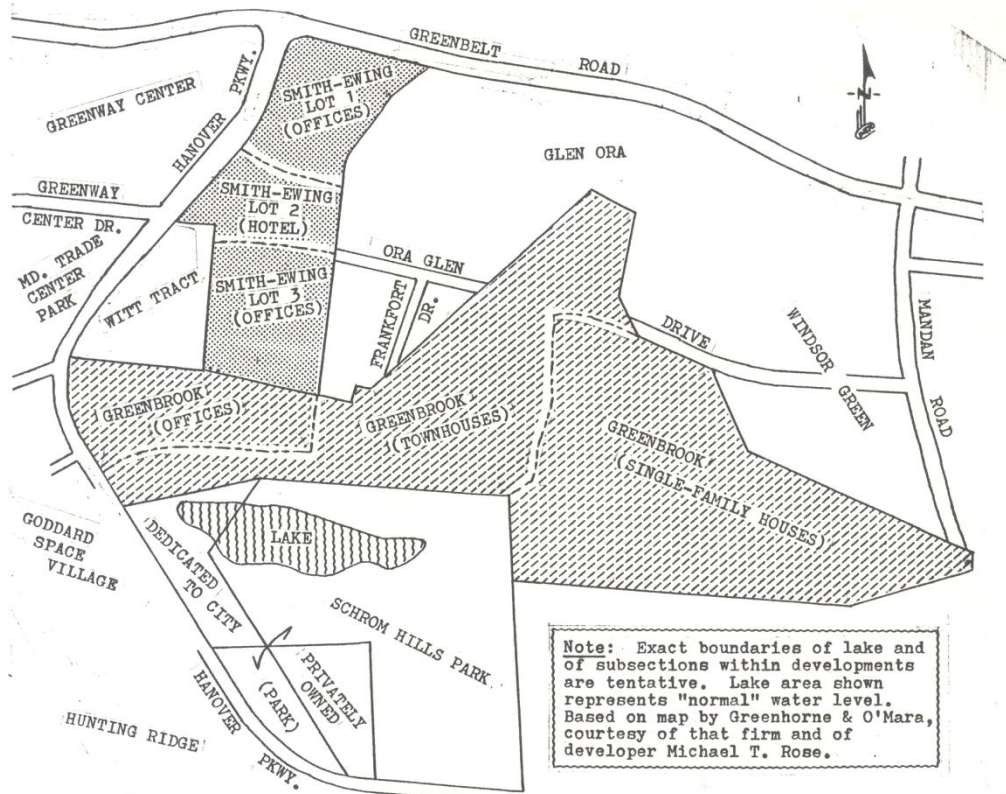










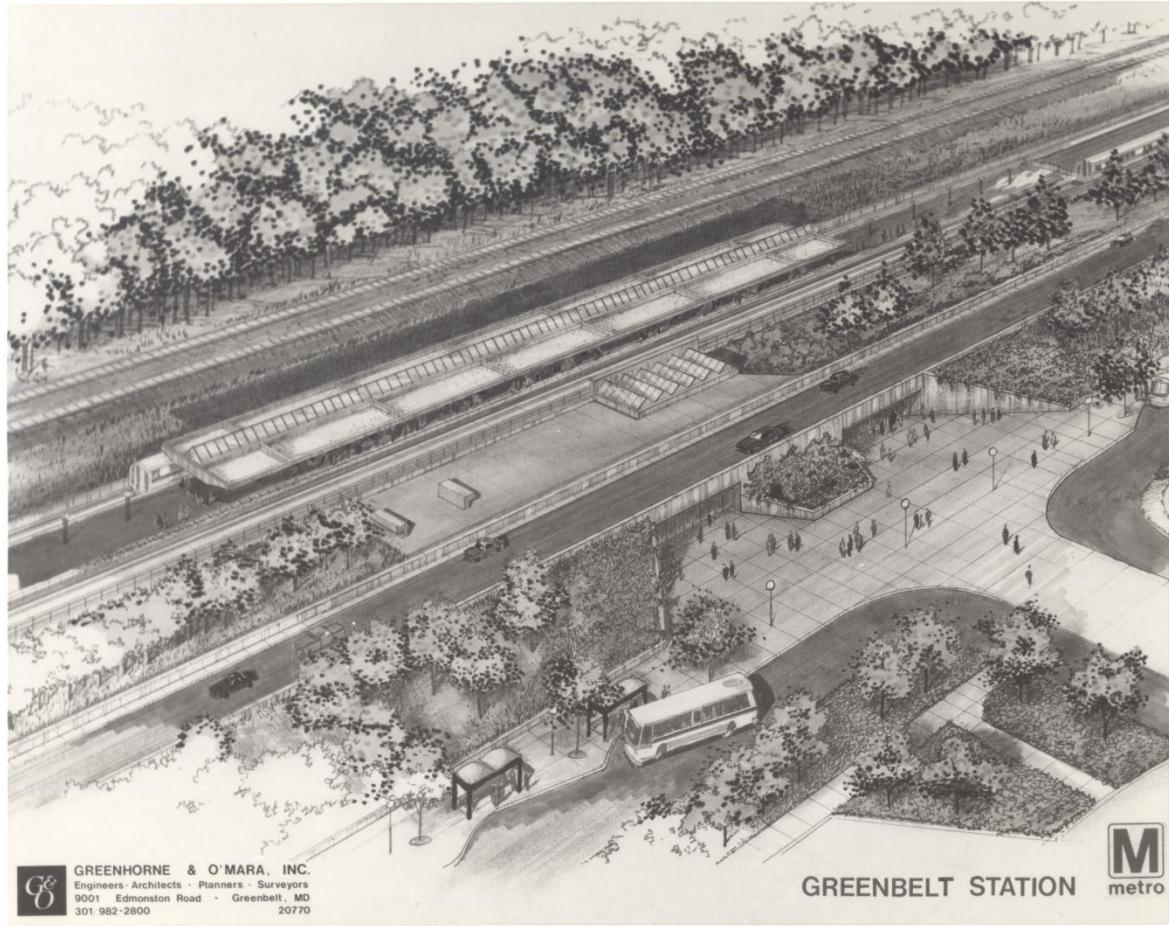


Note: Exact boundaries of lake and of subsections within developments are tentative. Lake area shown represents "normal" water level. Based on map by Greenhorns & O'Mara, courtesy of that firm and of developer Michael T. Rose.

This map shows preliminary plats of subdivision for two major tracts in East Greenbelt approved by the Prince Georges Planning Board — Smith-Ewing and Greenbrook. Also shown are a parcel to be dedicated to the city by the Greenbrook developer, and a combination lake/stormwater management facility to be built by WSSC. Most of the lake will be in Schrom Hills Park, which the city will soon acquire.

— map prepared by Bill Rowland

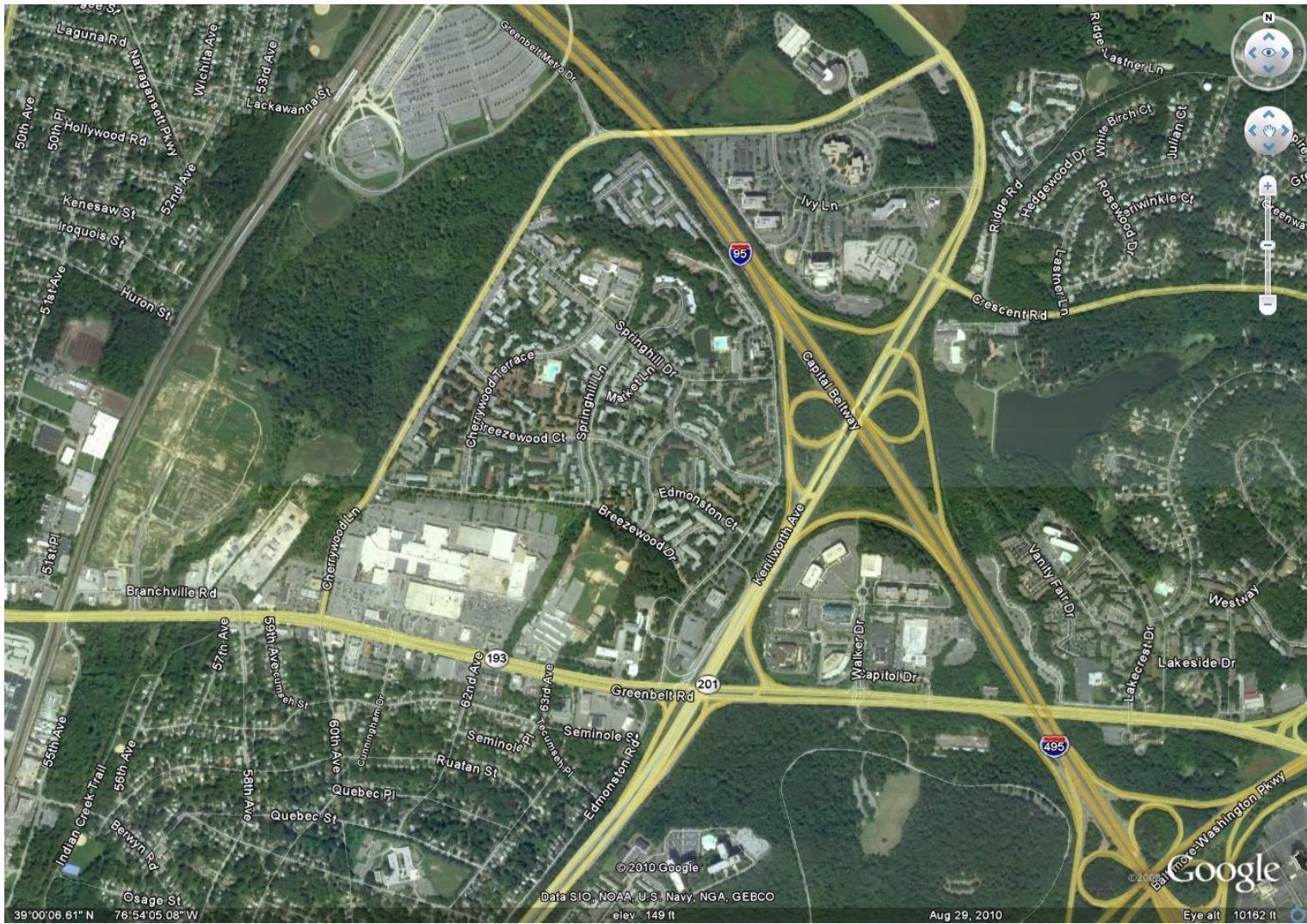




GREENHORNE & O'MARA, INC.
Engineers - Architects - Planners - Surveyors
9001 Edmonston Road - Greenbelt, MD
301 982-2800 20770

GREENBELT STATION





39°00'08.61" N 76°54'05.08" W

© 2010 Google
Data SIO, NOAA, U.S. Navy, NGA, GEBCO
elev 149 ft

Aug 29, 2010

Eye alt 10182 ft



Cherrywood Ln

Breezewood Dr

193

Greenbelt Rd

©2010 Google

Data SIO, NOAA, U.S. Navy, NGA, GEBCO

elev 94 ft

Aug 29, 2010

Google

Eye alt 2552 ft



COMMON AREAS:
 URBAN PARKS AND PLAZAS,
 POLICE STATION,
 RECREATION AREAS,
 LINEAR PARK /
 HIKER-BIKER TRAIL,
 STREETSCAPE / LANDSCAPE,
 PARKING, BIOWAYS,
 OPEN SPACE (MIN. 1 ACRE)

GREENBELT STATION TOWNE CENTRE
 CONCEPT PROGRAM

WAMATA PARKING
 GOAL: 3596 PARKING SPACES
 PROPOSED: 3596 PARKING SPACES

RETAIL
 GOAL: 1,150,000 SF
 5500 PARKING SPACES
 = 5 SPACES/1000 SF
 PROPOSED:
 ANCHOR: 550,000 SF
 SMALL: 375,000 +/- SF
 TOTAL: 925,000 +/- SF
 4180 +/- PARKING SPACES
 = 4.5 SPACES / 1000 SF

HOTEL
 GOAL:
 (2) 150-ROOM HOTELS
 TOTAL 300 ROOMS
 200,000 SF
 300 PARKING SPACES
 PROPOSED:
 (2) 150-ROOM HOTELS
 TOTAL 300 ROOMS
 225,000 SF
 300 PARKING SPACES

OFFICE
 GOAL:
 1.2M TO 1,600,000 SF;
 3600 SPACES +
 = 3 SPACES / 1000 SF
 PROPOSED:
 1.2M TO 1,600,000 +/- SF
 3,800 +/- SPACES

RESIDENTIAL UNITS
 GOAL: 1267 UNITS
 (1200 SF AVG)
 1,500,000 SF
 2534 SPACES
 PROPOSED:
 1267 UNITS
 1,500,000 SF
 2535 +/- SPACES

TOTAL SITE PARKING:
 GOAL: 15,530 +/-
 PROPOSED: 14,390 +/-

DEVELOPMENT TYPE
 MIN. / MAX.
 TOTAL SF = 4,200,000 +/-

RESIDENTIAL
 GOAL: 30-60% GSF
 PROPOSED: 44% +/-

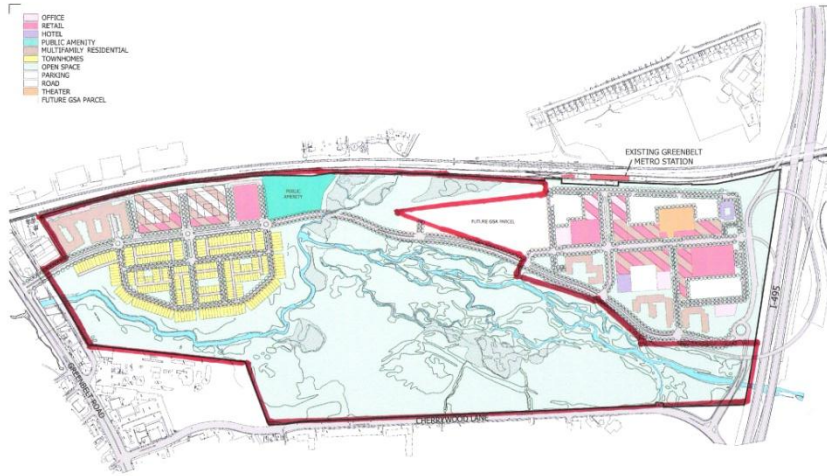
RETAIL (AND HOTEL)
 GOAL: 10-40% GSF
 PROPOSED: 27% +/-

OFFICE
 GOAL: 30-60% GSF
 PROPOSED: 29% +/-

Greenbelt Station Towne Centre
 Petrie Ross Ventures

CONCEPT PLAN:
 DRAFT 12
 Date: 4-17-2006
 Scale: 1"=100'-0"

THE MARTIN ARCHITECTURAL GROUP, P.C.
 ARCHITECTS AND LAND PLANNERS
 801 First Street, Suite 1000, Washington, DC 20002
 Tel: 202-638-1000 Fax: 202-638-1001



- OFFICE
- RETAIL
- HOTEL
- PUBLIC AMENITY
- MULTIFAMILY RESIDENTIAL
- TOWNHOMES
- OPEN SPACE
- PARKING
- ROAD
- THEATER
- FUTURE GSA PARCEL

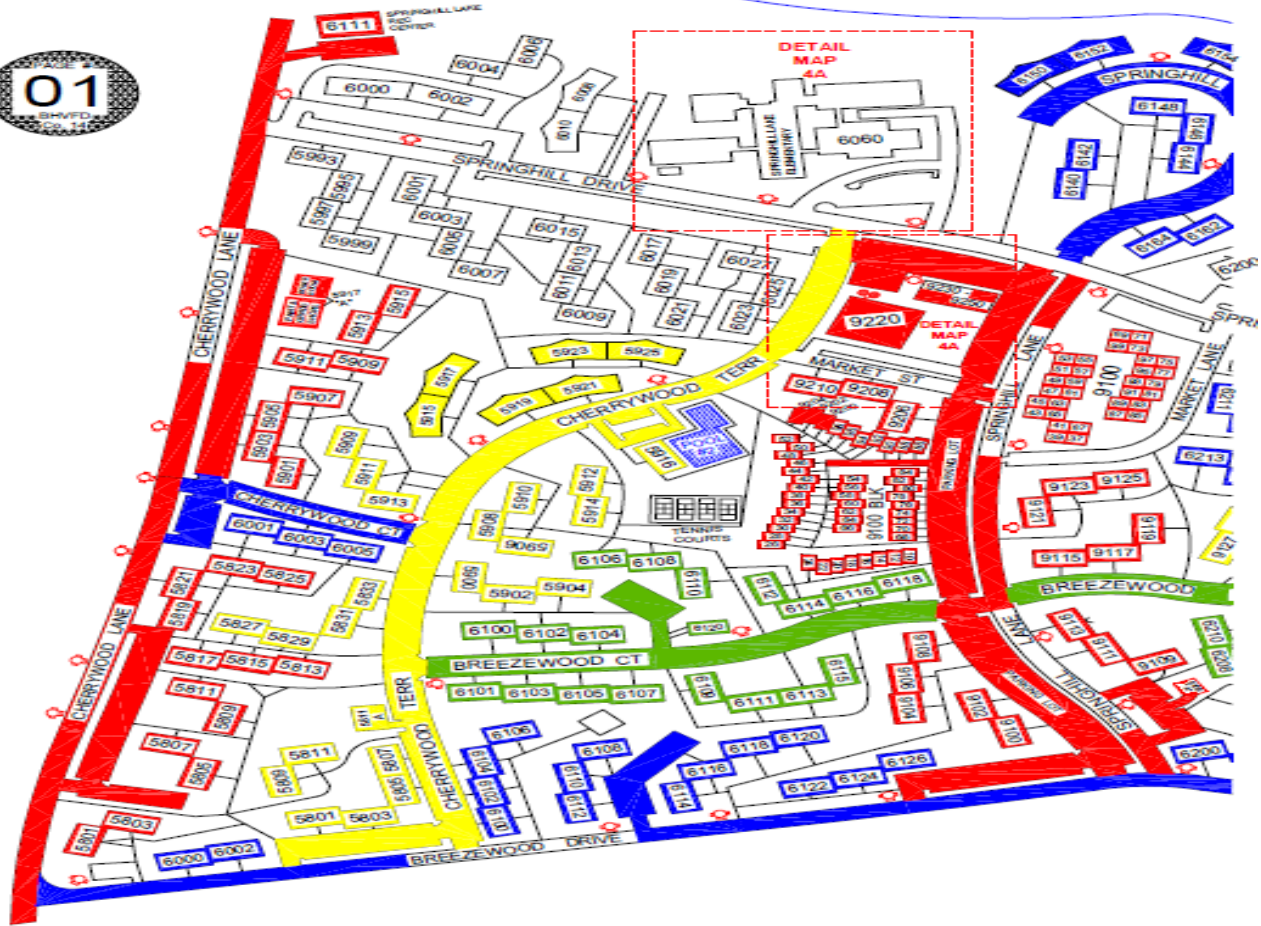
LESSARD GROUP INC.
 8011 LANSING RD, SUITE 700 | WYOMING, WY 82206
 P: 307.762.8344 | F: 307.762.8328 | WWW.LESSARDGROUP.COM

LAND USE PLAN
 Conceptual
 APRIL 8, 2025

GREENBELT STATION
 Prince George's County, MD
 Greenbelt Metro Park, LLC
 ADA-010A-02



01
SHEET
OF 14



75 years later ...

